

**PETTIBONE®**

# » EXTENDO 1144B

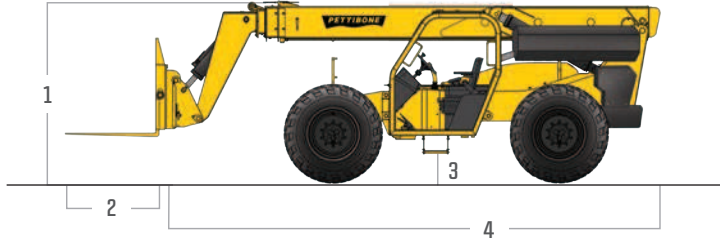
SPECIFICATIONS



The Pettibone® Extendo™ 1144B telehandler offers exceptional material handling capacity and maneuverability for a variety of applications. Providing excellent visibility from the cab, the 1144B allows operators to work safely and efficiently. Responsive hydraulics let users move loads with confidence, while superior engineering and service features maximize machine uptime.



## SPECIFICATIONS



### DIMENSIONS

<b>1</b>	<b>Overall Height</b>	7' 7.5" (232 cm) boom down
<b>2</b>	<b>Fork Carriage</b>	48" (122 cm) standard
<b>3</b>	<b>Ground Clearance</b>	18.8" (48 cm)
<b>4</b>	<b>Overall Length</b>	22' (671 cm) to fork frame
	<b>Overall Width</b>	8' 6" (259 cm)
	<b>Pallet Forks</b>	2.25 x 4 x 48" standard
	<b>Total Operating Weight</b>	25,840 lbs (11,721 kg)

### ENGINE

<b>Model/Power</b>	117 HP (87 kW) Cummins® QSF3.8 Tier 4 turbo diesel with electronic control & protection and SCR aftertreatment
<b>DEF Tank</b>	5 gal. (19 L)
<b>Fuel Tank</b>	32.6 gal. (123 L)

### HYDRAULICS

<b>System</b>	Pressure comp, axial piston
<b>Features</b>	Auxiliary boom tip hydraulics, quick disconnect for attachments
<b>Controls</b>	Single joystick, pilot operated

## FEATURES & OPTIONS

### OPERATOR CAB

Unmatched visibility Adjustable suspension seat with seat belt	Fully adjustable right-side armrest Full set of gauges for instant machine status
---	--

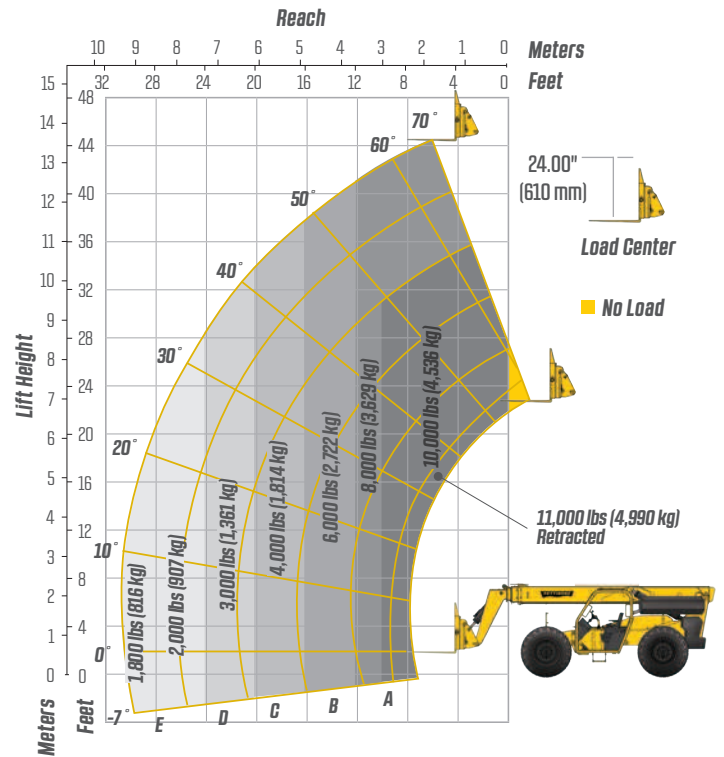
### AVAILABLE ATTACHMENTS

Pallet, lumber and block forks Side tilt carriages +/- 10° Side-swing carriage	Truss boom Utility buckets
--	-------------------------------

### OPTIONS

Light packages Foam-filled tires Solid tires	Enclosed cab (HWO) Air-conditioned cab Outriggers
--	---

## LIFT PERFORMANCE



### PERFORMANCE

<b>Max Load Capacity</b>	11,000 lbs (4,990 kg)
<b>Maximum Lift Height</b>	44' 6" (1,356 cm)
<b>Maximum Forward Reach</b>	30' 3" (922 cm) at 24" LG
<b>Below Grade Reach</b>	3' 3" (99 cm)
<b>Maximum Travel Speed</b>	20 mph (32 km/h)
<b>Turning Radius</b>	12' 6" (381 cm)
<b>Frame</b>	24° of leveling (12° right and left); rear axle stabilization system; fits under 8' doorway
<b>Transmission</b>	Fully modulated Carraro® Powershift, 4-speed forward & reverse; parking brake engaged transmission declutch
<b>Axles</b>	Carraro outboard planetary; 4-wheel drive
<b>Steering</b>	4 wheel, 2 wheel and crab steer
<b>Brakes</b>	Oil-immersed inboard disc service brakes, integral park brake
<b>Tires</b>	14.00 x 24, 16 ply
<b>Boom</b>	Automatic fork leveling without slave cylinders; 2 wide stance, heavy-duty lift cylinders

\* Specifications are subject to change.

**PETTIBONE®**

**PETTIBONE, LLC**  
1100 Superior Avenue  
Baraga, MI 49908

P: 800.467.3884  
info@gopettibone.com  
www.gopettibone.com

**1 - 2 - 3  
WARRANTY**

<b>1 Year</b>	Full machine and attachment
<b>2 Years</b>	Powertrain and major hydraulic components
<b>3 Years</b>	Machine structure

**WARRANTY**