

EXTENDO 1056^X

PETTIBONE

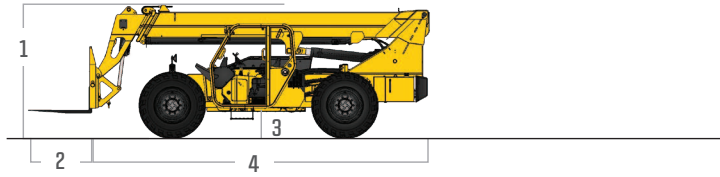
1056^X **EXTENDO**

Defined by rugged design and efficient operation, the Pettibone® Extendo™ 1056X offers superior longevity and performance for the long haul. Known for leading hydraulics that provide exceptional cycle times and controllability, the Extendo 1056X also offers strong machine and boom stability for enhanced safety.

X-SERIES

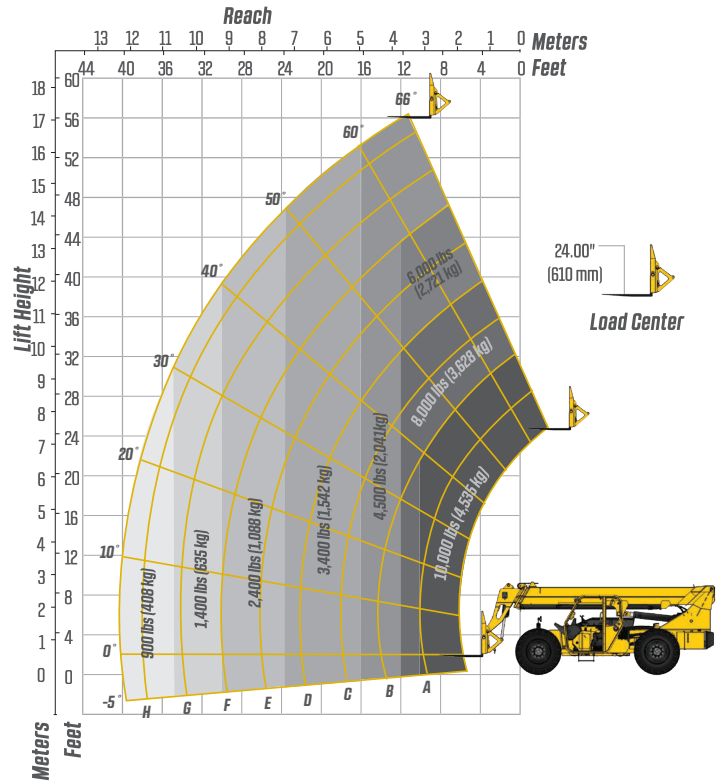


SPECIFICATIONS



DIMENSIONS		
1	Overall Height	8' 11" (272 cm) boom down
2	Fork Carriage	48" (122 cm) standard
3	Ground Clearance	18" (46 cm)
4	Overall Length	22' 11" (699 cm) to fork frame
	Overall Width	8' 6" (259 cm)
	Pallet Forks	2.25x4x48" standard
	Approximate Operating Weight	27,500 lbs (12,474 kg)
ENGINE		
	Model/Power	74 HP (55 kW) Cummins® Tier 4 turbo diesel with DOC muffler
	Fuel Tank	30 gal. (114 L)
HYDRAULICS		
	System	Pressure comp, axial piston pump
	Features	Fully proportional functions, auxiliary boom tip hydraulics, quick disconnect for attachments
	Controls	Single joystick, pilot operated
PERFORMANCE		
	Max Load Capacity	10,000 lbs (4,536 kg)
	Maximum Lift Height	56' (1,707 cm)
	Landing Height	52' (1,585 cm)
	Maximum Forward Reach	40' (1,219 cm) at 24° LC
	Below Grade Reach	3' (92 cm)
	Maximum Travel Speed	15.2 mph (24.5 km/h)
	Turning Radius	14' 4" (437 cm)
	Drawbar Pull (GVW)	26,250 lbs (11,907 kg)
	Frame	20° of leveling (10° right and left), rear axle stabilization system
	Transmission	Dana® VDT12000 Series, 3-speed Powershift, forward & reverse
	Axles	Dana 212 Series; 4-wheel drive, 45% limited slip front differential
	Steering	4 wheel, 2 wheel, and crab steer
	Brakes	Oil-immersed inboard disc service brakes, integral front SAHR park brake
	Tires	13.00 x 24, 16 ply, G2 tread air-fill standard
	Boom	4-section, slide pad; automatic fork leveling without slave cylinder

LIFT PERFORMANCE



FEATURES & OPTIONS

OPERATOR CAB

Adjustable suspension seat with seat belt
Single multifunction hydraulic joystick
Analog/LCD gauge cluster

Split door design
Flat, bolt-in glass
Lockable storage area under seat

AVAILABLE ATTACHMENTS

Pallet, lumber or block forks
Utility bucket
Side tilt carriage (+/- 10°)
Truss boom

Standard carriage
Side-swing carriage (+/- 60°)
Hydraulic fork positioning carriage

OPTIONS

Premium gauge cluster w/7" digital display
Rear-view camera system
High output LED lighting package
Solid or foam filled tires
Various tire tread options available
Enclosed cab, HWD (A/C available)

117 HP Cummins diesel engine w/SCR & DEF
74 HP Deutz® diesel engine
Sling hook
Electrical to boom tip
Bolt-on rear pintle hitch

* Specifications are subject to change.

PETTIBONE®

PETTIBONE, LLC

1100 Superior Avenue
Baraga, MI 49908

P: 800.467.3884
info@gopettibone.com
www.gopettibone.com

**1 - 2 - 3
WARRANTY**

1 Year

Full machine and attachment

2 Years

Powertrain and major hydraulic components

3 Years

Machine structure

WARRANTY