

# HOOKLIFTS



## INCREASED PRODUCTIVITY SOPHISTICATED SOLUTIONS



Courtesy of CraneMarket.com



# STRONG PERFORMANCE

## LIFTING WITH POWER

Palfinger American Roll-off is built on the foundation of quality and innovation, earning a reputation for producing the strongest container handling solutions available on the market since 1972.

With a wide range of container handling solutions, Palfinger American Roll-off is your one-stop shop for Cable Roll-off Hoists, Hooklifts and Container Carriers. Holding various patents in both Hooklift and Cable Roll-off lines, we are dedicated to innovation and developing the safest, most reliable and advanced products with excellent performance on the job.

Whether you need to load or dump materials, transport containers or change bodies, we understand your container handling needs in various industries.



### VERSATILE HOOKLIFT SOLUTIONS

PALFINGER is a strong brand in the design and manufacturing of hooklifts globally and in North America, with over 50 years of combined experience. Consequently, our versatile hooklift systems are built to last, offering an unparalleled degree of efficiency for your business. Our Single and Double articulating Hooklifts offer increased productivity and safety. Palfinger American Roll-off has a sophisticated solution for your needs up to 68,000 lbs.



#### MUNICIPALITIES

- Fire and rescue
- Parks and recreation
- Road maintenance
- Utility construction/maintenance



#### WASTE | SCRAP

- Collection and Disposal
- Recycling of paper, cardboard, vinyl etc.
- Recycling of scrap metals
- Solid and liquid wastes



#### CONSTRUCTION

- C & D collection and disposal
- Demolition
- Lumber and building material transport
- Transport of aggregates



#### OFF-ROAD

- ONE truck - multiple applications
- Dump truck, lube truck, flatbed truck, off-road tractor
- Maximize equipment uptime





# T-SERIES SOLUTIONS ADAPTED TO YOUR NEEDS

# 12

## HIGHLIGHTS



### LONGEVITY

- Casted parts provide longevity and strength (hook, rear pivots, hinge supports...)
- Increasing product lifetime and resale value



### POP - PALFINGER ORIGIN PROTECTION

- Increased lifetime; before assembling the main components are sand blasted, de-greased, primer painted and electro-staticly final coated.



### CAB CONTROLS

- Two speeds:
- Low: used during the loading phase
- High: to reduce cycle time (used with empty or no container)



### SOFT STOP

- Hydraulic breaking system provides a soft landing after loading and dumping
- Impacts from the load are avoided for the protection of the hooklift, container/load and vehicle



### SLIDE THROUGH CONTAINER CATCH

- Mechanical, zero-maintenance, hold down system
- No need for the driver to get out of the cab to secure the container



### TANDEM REAR ROLLERS

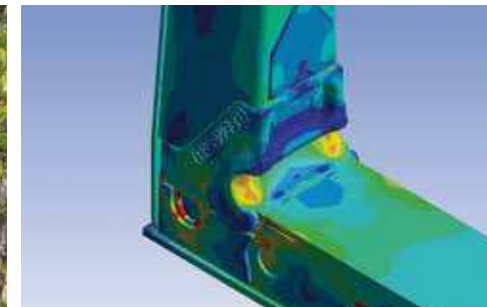
- Reduces the stress on the container rails
- Rollers pivot to allow for easier loading and unloading by distributing the forces of the load

\* Available on T30 and above



### DUAL HOOK HEIGHTS

- Provides the ability to handle multiple container sizes and capacities



### STATE-OF-THE-ART ENGINEERING

- Highest weight-to-lift ratio in the industry
- Use of high tensile steel reduces hooklift weight = **more** payload, **increased** truck longevity and **reduced** fuel costs



### CONTAINER CONVERSION

- By installing an A-Frame, an existing cable roll-off container can be converted to the hooklift system
- Modifications to the container rails are not required



### POWER ON, POWER OFF

- The PALFINGER Hooklift provides “power-on, power-off”, through the use of hydraulic cylinders
- Containers are easily loaded and unloaded onto docks and trailers.



### TRUE DUMP MODE

- All PALFINGER T-Series Hooklifts feature Dual Points of Articulation, which allow for a true “dump” mode.
- With Single Articulation Hoists, the container moves rearward and often hits the ground before the full dump angle is reached.



### WARRANTY

- Three (3) year warranty on all structural components. One (1) year warranty on hydraulic components.



# THE RIGHT CHASSIS

# THE CORRECT SPECIFICATIONS

## T-SERIES

HOIST MODEL	CAPACITY	CONTAINER LENGTH	JIB HEIGHT	DUMP ANGLE
CiTy	6,600 lbs.	9' - 11'	36 - 1/4"	50°
T 12 S	12,000 lbs.	10' - 12'	36 - 1/4"	52°
T 12 L	12,000 lbs.	12' - 14'	36 - 1/4"	48°
T 16 S	16,000 lbs.	9' - 12'	36 - 1/4"	52°
T 16 L	16,000 lbs.	12' - 15'	36 - 1/4"	49°
T 20 S	20,000 lbs.	9' - 12'	54"	52°
T 20 L	20,000 lbs.	12' - 15'	54"	49°
PHT - 16 M	16,000 lbs.	10' - 13'	36 - 1/4"	49°
PHT - 22 S	22,000 lbs.	10' - 14'	54"	52°
PHT - 22 M	22,000 lbs.	12' - 16'	54"	53°
PHT - 22 L	22,000 lbs.	14' - 18'	54"	51°
T 29 S	29,000 lbs.	11' - 14'	54"	50°
T 29 M	29,000 lbs.	12' - 16'	54"	50°
T 29 L	29,000 lbs.	14' - 18'	54"	50°
T 29 XL	29,000 lbs.	15' - 20'	54"	47°
T 29 ST	29,000 lbs.	11' - 14'	36 - 1/4" & 54"	50°
T 29 MT	29,000 lbs.	12' - 16'	36 - 1/4" & 54"	50°
T 40 S	40,000 lbs.	14' - 18'	54" / 61 - 3/4"	50°
T 40 L	40,000 lbs.	16' - 22'	54" / 61 - 3/4"	48°
T 50	50,000 lbs.	16' - 22'	54" / 61 - 3/4"	48°
T 60	60,000 lbs.	16' - 22'	54" / 61 - 3/4"	50°
G 68	68,000 lbs.	18' - 23'	61 - 3/4"	47°

## TRUCK

HOIST MODEL	MIN. CA/CT	PLATFORM LENGTH	MIN. GVWR	MIN.F/R SUSP.	MIN. RBM
CiTy	84"	115"	14,000 lbs.	5K / 9K	500,000 in.lbs.
T 12 S	84"	134"	17,500 lbs.	6K / 13.5K	500,000 in.lbs.
T 12 L	96" - 108"	153"	17,500 lbs.	6K / 13.5K	500,000 in.lbs.
T 16 S	108" - 120"	156"	22,000 lbs.	7K / 17K	750,000 in.lbs.
T 16 L	130" - 140"	187"	22,000 lbs.	7K / 17K	750,000 in.lbs.
T 20 S	108" - 120"	156"	26,000 lbs.	8K / 18K	750,000 in.lbs.
T 20 L	130" - 140"	187"	26,000 lbs.	8K / 18K	750,000 in.lbs.
PHT - 16 M	96" - 108"	153"	22,000 lbs.	7K / 17K	750,000 in.lbs.
PHT - 22 S	115" - 125"	165"	26,000 lbs.	8K / 18K	750,000 in.lbs.
PHT - 22 M	135" - 145"	184"	26,000 lbs.	8K / 18K	750,000 in.lbs.
PHT - 22 L	160" - 170"	203"	26,000 lbs.	8K / 18K	750,000 in.lbs.
T 29 S	110" - 120"	169"	33,000 lbs.	12K / 21K	1,000,000 in.lbs.
T 29 M	130" - 140"	181"	33,000 lbs.	12K / 21K	1,000,000 in.lbs.
T 29 L	150" - 160"	205"	33,000 lbs.	12K / 21K	1,000,000 in.lbs.
T 29 XL	170" - 180"	230"	50,000 lbs.	12K / 38K	1,500,000 in.lbs.
T 29 ST	110" - 120"	169"	33,000 lbs.	12K / 21K	1,000,000 in.lbs.
T 29 MT	130" - 140"	181"	33,000 lbs.	12K / 21K	1,000,000 in.lbs.
T 40 S	135" - 145"	212"	54,000 lbs.	14K / 40K	2,000,000 in.lbs.
T 40 L	180" - 190"	253"	54,000 lbs.	14K / 40K	2,000,000 in.lbs.
T 50	185" - 195"	253"	64,000 lbs.	18K / 46K	2,750,000 in.lbs.
T 60	185" - 195"	254"	64,000 lbs.	18K / 46K	2,750,000 in.lbs.
G 68	195" - 205"	254"	66,000 lbs.	20K / 46K	3,000,000 in.lbs.

Maximum legal rear overhang is dependent on the length of the container and the design of the rear bumper. Please verify with installer / body builder.





**PALFINGER American Roll-Off**

572 Whitehead Rd. | Trenton | NJ 08619

☒ PO Box 5757 | Trenton | NJ 08638

T + 1 800 851 8938

F + 1 609 588 4104

Products shown in the leaflet are partially optional equipped and do not always correspond to the standard version. Country-specific regulations must be observed.  
Dimensions may vary. Subject to technical changes, errors and translation mistakes.