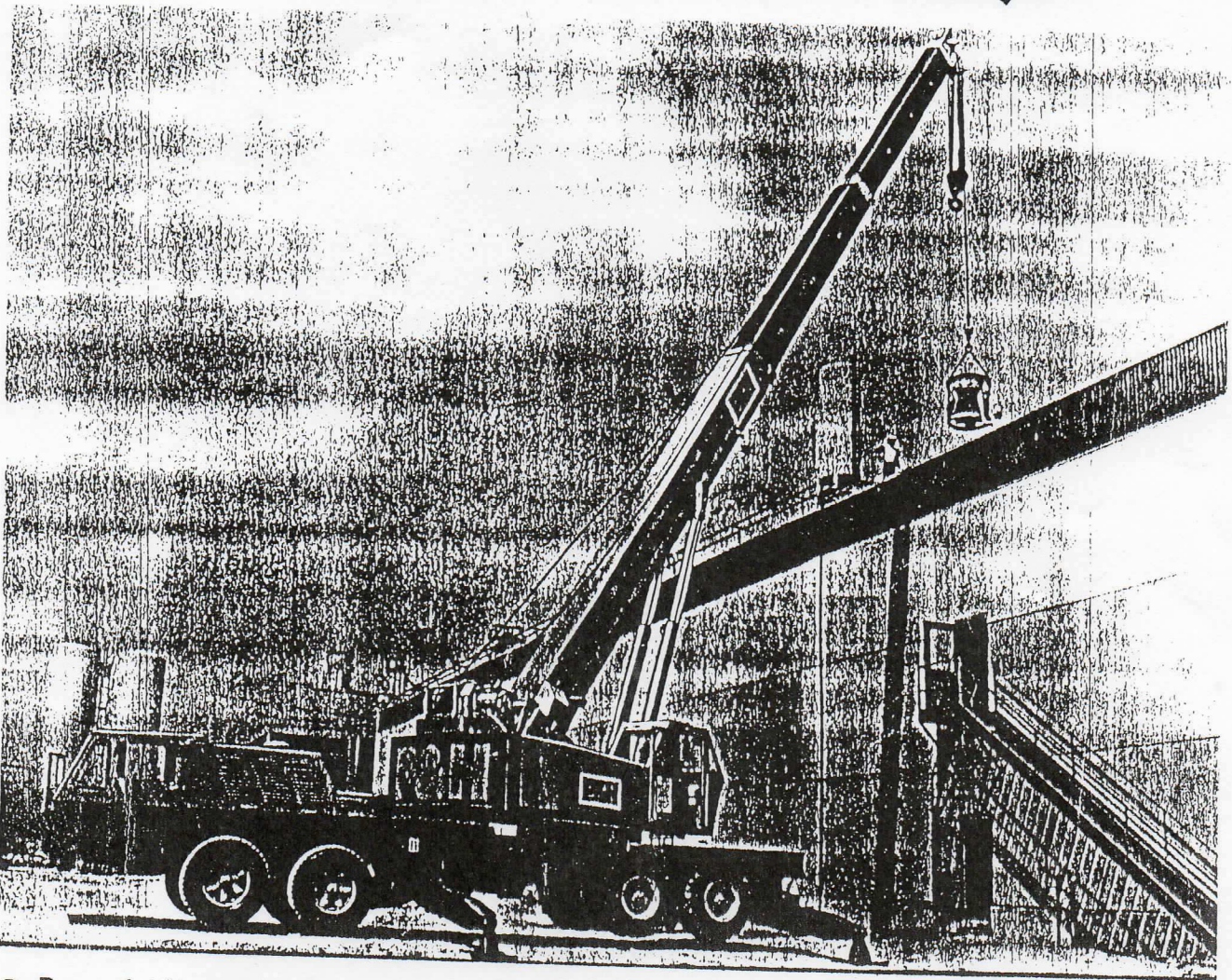


P&H® T-600XL

60-ton hydraulic truck crane 182-ft. maximum boom and jib



- Powerful Harnischfeger-built 8 x 4 carrier with road speeds to 49 mph (78.8 kmh)
- Standard 36' to 114' (10.9 to 34.7 m) telescopic powered boom with manually pinned fly section that can be hydraulically extended or retracted.
- Optional 33' (10.1 m) swing-around boom extension . . . plus add-on 15' (4.6 m), 25' (7.6 m) or 35' (10.7 m) lattice jib. Maximum tip height of boom, extension and jib 188' (57.3 m).
- P&H 2-speed winches with integral controlled free-fall
- Exclusive P&H Volu-Matik® hydraulic system.
- Pressure-compensated valves for more precise control of winching, booming and telescoping.
- Independent swing with foot-operated, hydraulically applied swing brake for smooth, precise operation.
- Exclusive P&H outriggers with independent horizontal and vertical motions, and self-storing floats.

specifications

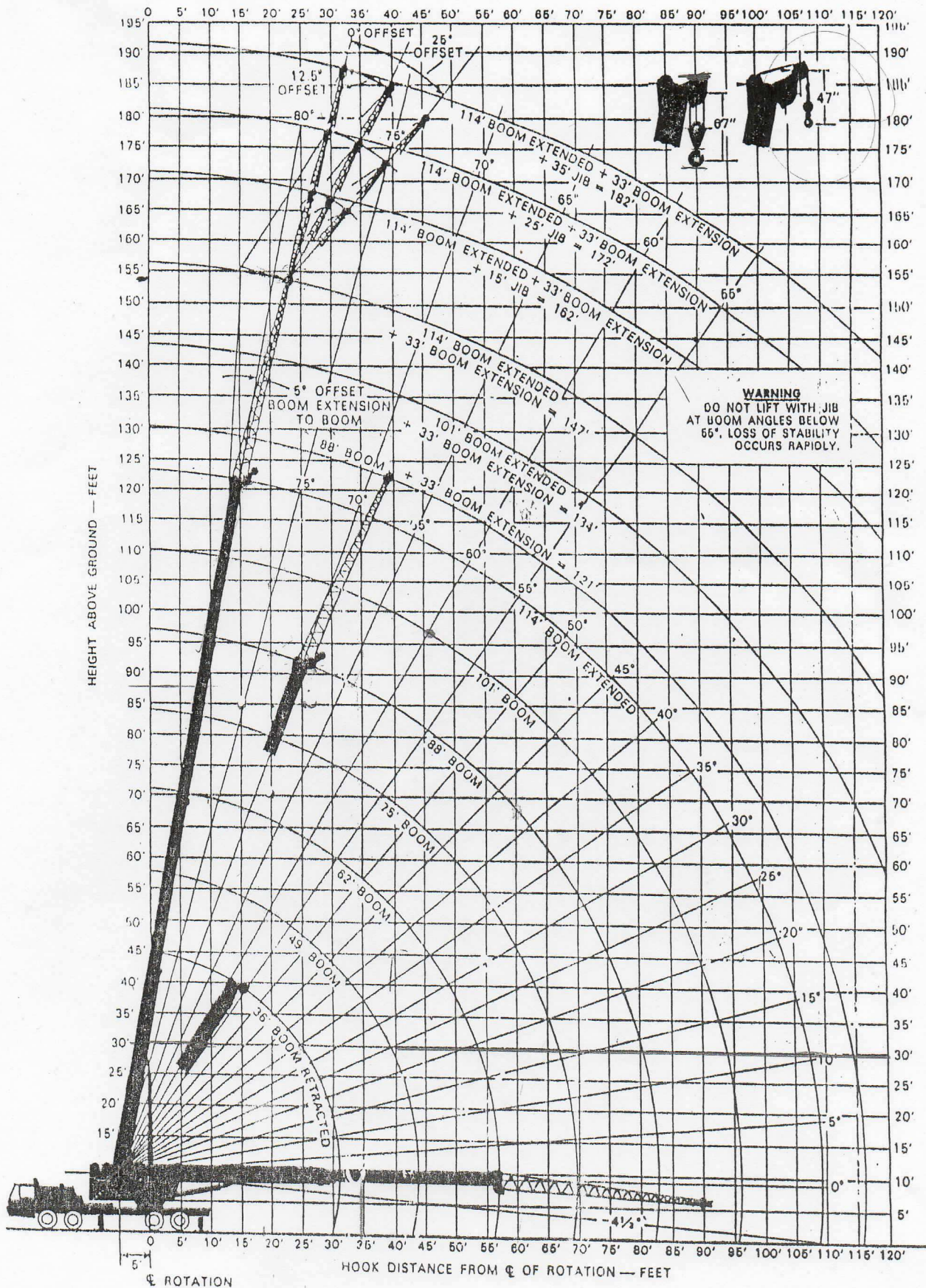
Courtesy of Crane Market

EQU
88
RAT
500
57000
53000
50000
11000
12900
14100
8200
4400
1500
7300
4200
2400

ION PLATE
LESS THAN
PH.
FRAY LIN
10M MAX

working ranges

Grun T-600 x L 6003



ed crane loads in pounds — main boom in over side and over rear work areas with outriggers fully extended and set

POWERED BOOM LENGTH IN FEET

ALL THREE POWERED SECTIONS EXTENDED EQUALLY

LOAD RADIUS IN FEET	36				42				49				62				75				86				101				114				134 (SEE WARNING NOTE 1)				147 (SEE WARNING NOTE 1)				
	LOADED BOOM ANGLE		RATED LOAD POUNDS		LOADED BOOM ANGLE		RATED LOAD POUNDS		LOADED BOOM ANGLE		RATED LOAD POUNDS		LOADED BOOM ANGLE		RATED LOAD POUNDS		LOADED BOOM ANGLE		RATED LOAD POUNDS		LOADED BOOM ANGLE		RATED LOAD POUNDS		LOADED BOOM ANGLE		RATED LOAD POUNDS		LOADED BOOM ANGLE		RATED LOAD POUNDS		LOADED BOOM ANGLE								
	SIDE	REAR	SIDE	REAR	SIDE	REAR	SIDE	REAR	SIDE	REAR	SIDE	REAR	SIDE	REAR	SIDE	REAR	SIDE	REAR	SIDE	REAR	SIDE	REAR	SIDE	REAR	SIDE	REAR	SIDE	REAR	SIDE	REAR	SIDE	REAR									
70	120000	120000	73	97000	97000	76	92000	92000	79	86000	86000	77	81000	81000	80	77000	77000	78	73000	73000	79	68000	68000	78	64000	64000	80	60000	60000	80	57000	57000	80	53000	53000	80	48000	48000			
66	105000	105000	70	90000	90000	73	86000	86000	77	81000	81000	77	76000	76000	78	73000	73000	78	70000	70000	79	67000	67000	79	64000	64000	80	61000	61000	80	58000	58000	80	55000	55000	80	52000	52000			
63	93000	93000	67	83000	83000	71	80000	80000	75	76000	76000	75	73000	73000	76	70000	70000	76	67000	67000	77	64000	64000	77	61000	61000	78	58000	58000	78	55000	55000	78	52000	52000	78	49000	49000	78	46000	46000
59	80000	80000	64	76000	76000	68	74000	74000	73	71000	71000	73	68000	68000	74	65000	65000	74	62000	62000	75	59000	59000	75	56000	56000	76	53000	53000	76	50000	50000	76	47000	47000	76	44000	44000	76	41000	41000
55	70000	70000	61	69000	69000	65	68000	68000	71	67000	67000	71	66000	66000	72	65000	65000	72	64000	64000	73	63000	63000	73	62000	62000	74	61000	61000	74	60000	60000	74	59000	59000	74	58000	58000	74	57000	57000
50	62000	62000	57	61000	61000	63	60000	60000	69	59000	59000	74	58000	58000	74	58000	58000	74	58000	58000	75	57000	57000	75	56000	56000	76	55000	55000	76	54000	54000	76	53000	53000	76	52000	52000	76	51000	51000
33	47000	47000	48	46000	46000	56	45000	45000	64	44000	44000	69	43000	43000	73	42000	42000	73	41000	41000	73	40000	40000	73	39000	39000	73	38000	38000	73	37000	37000	73	36000	36000	73	35000	35000	73	34000	34000
18	32900	34900	37	32900	34900	48	32900	34900	59	32900	34900	65	32900	34900	65	32900	34900	65	32900	34900	65	32900	34900	65	32900	34900	65	32900	34900	65	32900	34900	65	32900	34900	65	32900	34900	65	32900	34900
22	24100	26400	39	24100	26400	53	24100	26400	53	24100	26400	53	24100	26400	53	24100	26400	53	24100	26400	53	24100	26400	53	24100	26400	53	24100	26400	53	24100	26400	53	24100	26400	53	24100	26400	53	24100	26400
27	18200	20700	46	18200	20700	46	18200	20700	46	18200	20700	46	18200	20700	46	18200	20700	46	18200	20700	46	18200	20700	46	18200	20700	46	18200	20700	46	18200	20700	46	18200	20700	46	18200	20700	46	18200	20700
30	11500	13500	46	11500	13500	46	11500	13500	46	11500	13500	46	11500	13500	46	11500	13500	46	11500	13500	46	11500	13500	46	11500	13500	46	11500	13500	46	11500	13500	46	11500	13500	46	11500	13500	46	11500	13500
33	7300	8600	33	7300	8600	33	7300	8600	33	7300	8600	33	7300	8600	33	7300	8600	33	7300	8600	33	7300	8600	33	7300	8600	33	7300	8600	33	7300	8600	33	7300	8600	33	7300	8600	33	7300	8600
2	4200	5700	2	4200	5700	2	4200	5700	2	4200	5700	2	4200	5700	2	4200	5700	2	4200	5700	2	4200	5700	2	4200	5700	2	4200	5700	2	4200	5700	2	4200	5700	2	4200	5700	2	4200	5700

WARNING
1. FOR BOOM LENGTHS LESS THAN 134 FEET AND LESS THAN 147 FEET THE 33 FOOT BOOM EXTENSION RATED LOADS ARE DETERMINED BY BOOM ANGLE ONLY IN THE COLUMN HEADERS BY 134 FOOT BOOM AND 147 FOOT BOOM RESPECTIVELY FOR ANGLES NOT SHOWN, USE RATING OF NEXT LOWER BOOM ANGLE.

on rubber . . . with 8,700 lbs. counterweight rated crane loads in pounds — main boom — without outriggers

LOAD RADIUS IN FEET	STATIC RATINGS		TRAVEL RATINGS	
	OVER REAR	OVER SIDE	OVER REAR WITH HOUSE LOCK ENGAGED	5 MPH MAX.
	①	①	②	③
12	43800	25500	42000	26100
14	35200	18900	33800	23500
16	29200	13800	28000	21200
18	23700	10200	22700	19100
20	19700	7600	18900	17600
25	13100	3700	12600	12200
30	8700	1200		
35	5900			
40	4000			
45	2700			
50	1500			

DO NOT EXCEED A 55 FT. RADIUS WITH OR WITHOUT HOOK BLOCK OR A TIPPING CONDITION WILL OCCUR.

DO NOT EXCEED A 40 FT. RADIUS WITH OR WITHOUT HOOK BLOCK OR A TIPPING CONDITION WILL OCCUR. WHEN TRAVELING THE MACHINE WITH A LOAD, THE MACHINE MUST BE ON FIRM LEVEL GROUND WITH A FULLY RETRACTED BOOM AND THE LOAD AS CLOSE TO THE REAR OF MACHINE AS POSSIBLE AND RESTRAINED FROM SWINGING.

SIZE	TIRE INFLATION	
	STATIC	CREEP
12.00x20	18PR 115 PSI	115 PSI
16.50x22.5	16PR 100 PSI	100 PSI
14.50x20	18PR 105 PSI	105 PSI
		35 PSI

CRANE LOAD RATINGS WITHOUT OUTRIGGERS DEPEND ON TIRE CAPACITY AND CONDITION OF TIRES AND INFLATED PER TABLE. IT IS RECOMMENDED THAT OUTRIGGERS BE EXTENDED AS FAR AS POSSIBLE AND CLEAR OF GROUND AND THAT THE SHORTEST POSSIBLE BOOM LENGTH BE EMPLOYED WHEN LIFTING ON RUBBER. ALL RATINGS DO NOT EXCEED 75% OF TIP.

- ① ST. GRADES OR OBSTACLES MUST BE WITHIN RANGE.
- ② CREEP IS LIMITED TO LESS THAN 100 FT. IN A 30 MIN PERIOD WHILE TRAVELING.
- ③ RANGES ABOVE THE HOUSE LIMIT ARE BASED ON STRUCTURAL CAPABILITY AND NOT ON MACHINE CAPABILITY.

PCSA CLASS 10 - 199

PLUMA MANUAL CON 3,946 Kg. DE CONTRAPESO

RANGOS DE CAPACIDAD DE CARGA EN KG. - PLUMA PRINCIPAL EN AREAS DE TRABAJO LATERALES Y TRASERAS CON ESTABILIZADORES TOTALMENTE EXTENDIDOS

EN METROS		LONGITUD DE PLUMA EN METROS - EXTENSION MANUAL RETRAIDA AMBAS SECCIONES DE PLUMA EXTENDIDAS IGUALMENTE												EXTENSION MANUAL				10.06 M. DE PLUMA MANUAL RETRAIDA				10.06 M. DE PLUMA MANUAL EXTENDIDA										
		10.97			12.80			14.93			18.90			22.86			26.82			34.75 (VER NOTA 1)			36.88 (VER NOTA 2)			44.8 (VER NOTA 2)						
ANGULO DE PLUMA	TRASERA	LATERAL	ANGULO DE PLUMA	TRASERA	LATERAL	ANGULO DE PLUMA	TRASERA	LATERAL	ANGULO DE PLUMA	TRASERA	LATERAL	ANGULO DE PLUMA	TRASERA	LATERAL	ANGULO DE PLUMA	TRASERA	LATERAL	ANGULO DE PLUMA	TRASERA	LATERAL	ANGULO DE PLUMA	TRASERA	LATERAL	ANGULO DE PLUMA	TRASERA	LATERAL	ANGULO DE PLUMA	TRASERA	LATERAL	RADIO EN METROS		
5	69	54,432	54,432	72	43,092	43,092	79	38,102	38,102	75	39,917	39,917	79	38,102	38,102	75	39,917	39,917	79	38,102	38,102	75	39,917	39,917	79	38,102	38,102	75	39,917	39,917	3.05	
6	65	47,628	47,628	69	39,463	39,463	72	37,195	37,195	77	35,834	35,834	80	31,752	31,752	80	31,752	31,752	80	31,752	31,752	80	31,752	31,752	80	31,752	31,752	80	31,752	31,752	3.66	
7	62	42,185	42,185	66	36,288	36,288	70	34,927	34,927	75	33,113	33,113	78	29,938	29,938	78	29,938	29,938	78	29,938	29,938	78	29,938	29,938	78	29,938	29,938	78	29,938	29,938	4.27	
8	58	36,288	36,288	63	33,113	33,113	67	32,206	32,206	73	30,845	30,845	77	28,123	28,123	77	28,123	28,123	77	28,123	28,123	77	28,123	28,123	77	28,123	28,123	77	28,123	28,123	4.88	
9	54	31,752	31,752	60	30,391	30,391	65	29,484	29,484	71	28,577	28,577	75	26,309	26,309	78	18,144	18,144	78	18,144	18,144	78	18,144	18,144	78	18,144	18,144	78	18,144	18,144	5.49	
10	49	28,123	28,123	57	27,870	27,870	62	26,762	26,762	69	25,855	25,855	73	24,494	24,494	76	17,690	17,690	80	13,608	13,608	80	13,608	13,608	80	13,608	13,608	80	13,608	13,608	6.10	
11	37	21,319	21,319	48	20,866	20,866	55	20,412	20,412	64	19,958	19,958	69	19,505	19,505	73	16,783	16,783	78	12,247	12,247	78	12,247	12,247	79	8,165	8,165	79	8,165	8,165	7.62	
12	17	15,649	16,057	36	15,649	16,057	47	15,649	16,057	58	15,649	16,057	65	15,649	16,057	70	15,649	16,057	75	11,340	11,340	75	11,340	11,340	77	6,350	6,350	79	5,443	5,443	9.14	
13	PRECAUCION PARA CARGAS CON 10.07 M DE PLUMA LOS GATOS DE PLUMA DEBEN ESTAR RETRAIDOS		21	11,703	12,655	38	11,703	12,655	52	11,703	12,655	60	11,703	12,655	66	11,703	12,655	72	9,979	9,979	74	5,443	5,443	74	5,443	5,443	78	4,990	4,990	10.67		
14			26	9,027	9,934	26	9,027	9,934	46	9,027	9,934	56	9,027	9,934	62	9,027	9,934	70	8,618	8,618	71	4,990	4,990	71	4,990	4,990	76	4,400	4,400	12.19		
15			39	7,167	8,029	39	7,167	8,029	51	7,167	8,029	58	7,167	8,029	64	7,167	8,029	67	7,938	7,938	69	4,536	4,536	69	4,536	4,536	74	4,173	4,173	13.72		
16			30	5,670	6,486	30	5,670	6,486	45	5,670	6,486	54	5,670	6,486	64	5,670	6,486	72	6,532	7,348	66	4,173	4,173	66	4,173	4,173	72	3,856	3,856	15.24		
17			32	3,493	4,264	32	3,493	4,264	45	3,493	4,264	58	4,445	5,171	61	3,629	3,629	68	4,445	5,171	61	3,629	3,629	68	3,357	3,357	78	2,948	2,948	18.29		
18			1	1,950	2,767	1	1,950	2,767	34	1,950	2,767	44	2,087	2,676	49	2,449	2,722	59	3,130	3,765	55	3,175	3,175	55	3,175	3,175	64	2,948	2,948	21.34		
19			17	998	1,724	17	998	1,724	44	2,087	2,676	49	2,449	2,722	59	2,631	2,631	63	2,087	2,676	49	2,449	2,722	59	2,631	2,631	72	2,359	2,359	24.38		
20			36	1,406	1,905	36	1,406	1,905	42	1,724	2,268	54	2,268	2,268	54	2,268	2,268	61	1,406	1,905	42	1,724	2,268	54	2,268	2,268	68	1,950	1,950	27.43		
21			25	816	1,769	25	816	1,769	34	1,089	1,542	49	1,497	1,950	49	1,497	1,950	56	816	1,769	34	1,089	1,542	49	1,497	1,950	64	1,452	1,452	30.48		
22			2	363	726	2	363	726	23	635	1,043	23	635	1,043	23	635	1,043	36	363	726	23	635	1,043	23	635	1,043	44	1,452	1,452	33.22		
23			14	227	635	14	227	635	28	227	635	28	227	635	28	227	635	36	635	998	998	998	998	998	998	998	998	998	998	998	36.58	
24			227	42.67	42.67	227	42.67	42.67	227	42.67	42.67	227	42.67	42.67	227	42.67	42.67	227	42.67	42.67	227	42.67	42.67	227	42.67	42.67	227	42.67	42.67	227	42.67	42.67

NOTAS

1. PARA LONGITUDES DE PLUMA MENORES DE 34.75 M. CON LA SECCION MANUAL EXTENDIDA EL RANGO DE CARGA ES DETERMINADO POR EL ANGULO DE LA PLUMA UNICAMENTE EN LA COLUMNA ENCABEZADA POR 34.75 M. DE PLUMA. PARA ANGULOS DE PLUMA NO MOSTRADOS USE EL RANGO DEL ANGULO PROXIMO MENOR.
2. PARA LONGITUDES DE PLUMA MENORES DE 36.88 M. CON LA SECCION MANUAL RETRAIDA Y MENORES DE 44.80 M. CON LA SECCION MANUAL EXTENDIDA EL RANGO DE CARGA DE LOS 10.06 M DE JIB ESTAN DETERMINADOS POR EL ANGULO DE LA PLUMA UNICAMENTE EN LAS COLUMNAS ENCABEZADAS POR 36.88 Y 44.80 M. RESPECTIVAMENTE. PARA ANGULOS NO MOSTRADOS USAR EL ANGULO PROXIMO MENOR.