



MIGHTY CRANE

CR335D



An introduction to wide variety of applications



MAX LOADING WEIGHT

2.98t × 2.5m

- Able to work even in a narrow or restricted area where standard cranes can't enter due to their size
- Safety Moment limiter standard
- High performance for installation of decoration/construction materials
- Easy hook-in system
- Tier 3 exhaust gas regulation compliant
- Electric motor unit (option) for "emission free"
- 4 falls / 2 falls / 1 fall hook block
- Remote operation controller

over 12m long boom



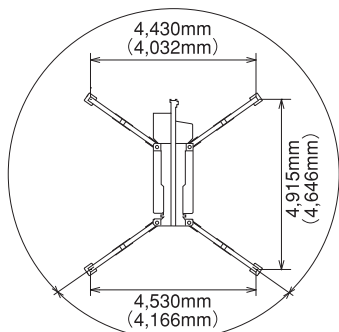
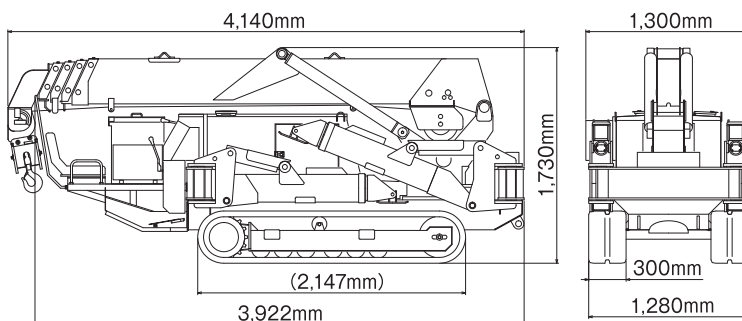
ASME B30.5-2007 compliant

R&B ENGINEERING Co., Ltd.
www.rbe.co.jp

Courtesy of Machine.Market

Specifications

Crane capacity		2.98t × 2.5m
Max.working radius		12.18m × 260kg
Max.lifting height (on the ground)		12.55m
Winch system	Hook speed	10.8m/min (4layers, 4falls)
	Hoist wire rope	φ8mm×80m
Telescoping system	Type	Pentagonal, 5-step hydraulic full-auto
	Boom length	3.715-5.955-8.155-10.325-12.495m
	Boom telescoping stroke/Time	8.79m/33sec
Boom hoisting system	Boom angle / time	0-80°/18sec
Swing system	Swing angle / time	360°(continuous)/30sec
Outrigger	Type	Telescoping hydraulic full-auto
	Max.extended width	4,530mm × 4,430mm × 4,915mm
Travel system	Type	Hydraulic motor reducer with brake
	Travel speed	0~1.62km/h
	Grade ability	23°
	Crawler ground length×width	1,730mm × 300mm
	Ground pressure	36.8kpa [0.375 kgf/cm ²]
Engine	Model	YANMAR 3TNV76NMB Certified to EPA Tier4
	Displacement	1.115ℓ [1115cc]
	Continuous rated output	15.2kw/2,500min ⁻¹ [20.7PS/2,500rpm]
	Starting method	Electric starting
	Fuel / Fuel tank capacity	Diesel/42.5ℓ
Electric motor	Motor type	Totally enclosed fan-cooled motor 4P,5.5kw, 200V-380V, 3Phase, 50/60Hz
Hydraulic	Hydraulic pump	Fixed torque dual piston pump
Remote	Speed mode	High/Low
	Operation	Telescoping, Hoisting, Swing, winch Engine speed controller, Alarm, Emergency stop.
Overall length×width×height		4,140mm × 1,300mm × 1,730mm
Machine weight		3,760kg (3,980kg with electric motor)
Options		Cable remote controller, Moment limiter, Head lamps, Electric motor 2falls/1fall hook



Electric motor

※Dimensions in () are those during the middle outrigger position.

Table of Total Rated Load [5-section boom] (Max extended)

When booms A and B are used

Working radius (m)	~2.5	3.0	3.5	4.0	4.5	5.0	5.63			
Total rated load (t)	2.98	2.39	1.99	1.71	1.49	1.34	1.16			

When booms A, B and C are used

Working radius (m)	2.7	3.0	3.5	4.0	4.5	5.0	5.5	6.0	7.0	7.83
Total rated load (t)	2.27	2.12	1.68	1.44	1.26	1.11	0.99	0.88	0.73	0.63

When booms A, B, C and D are used *

Working radius (m)	4.0	4.5	5.0	6.0	7.0	8.0	9.0	10.0		
Total rated load (t)	1.08	0.985	0.88	0.77	0.67	0.57	0.50	0.43		

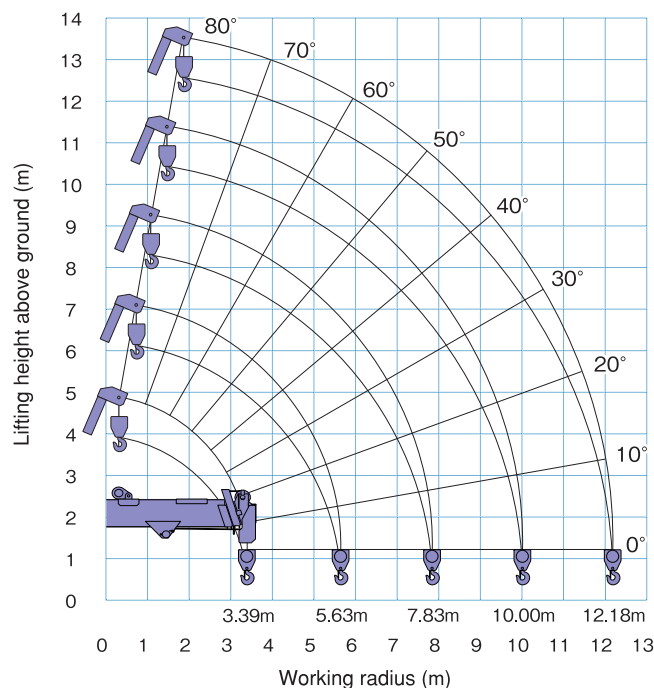
When booms A, B, C, D and E are used

Working radius (m)	~4.5	5.0	6.0	7.0	8.0	9.0	10.0	11.0	12.18	
Total rated load (t)	0.79	0.66	0.52	0.43	0.38	0.34	0.31	0.28	0.26	

※Figures in each table includes 23kg of hook block.

*If mark can be seen, be sure to operate within the limit of booms A+B+C+D.

Working range chart



※Working radius and lifting height are based on unloaded condition, excluding deflection of the boom.

Safety precautions

- Make sure to read the operation manual before using the product.
- Make sure to extend and set up the outriggers properly before operation. Read the operation manual for the proper outriggers set up.

- Specifications and design are subject to change without notice due to improvement and the product may differ from the descriptions and photos in the catalog.



R&B ENGINEERING Co., Ltd.

Head Office / No.22-5, Oji 2-chome, Kita-ku, Tokyo 114-0002 JAPAN
TEL: +81-3-3919-2060 / FAX: +81-3-3919-2212
Shizuoka Branch / No.716-1, Nagasaki, Shimizu-ku, Shizuoka-Shi, Shizuoka
424-0065 JAPAN
TEL: +81-54-346-7211 / FAX: +81-54-346-8686
E-mail: info@rbe.co.jp / Website: http://www.rbe.co.jp