

MJ 30 TRAVELIFT[®] CRANE SPECIFICATIONS •INDUSTRIAL APPLICATION•



3111 West 167th Street, Hazel Crest, Illinois 60429
Phone (708) 596-5200 • Fax (708) 225-2312
www.mi-jack.com
ISO 9001-2000 CERTIFIED

CAPACITY.....60,000 LBS (27,216 KG)

STANDARD EQUIPMENT

Open operator platform under side beam • Operating switches and gauges • Noise suppression • 4 Red strobe lights • 4 Motion alarms • Cummins Diesel 4BTA3.9 engine • Rear wheel drive • Rear wheel steer • Vivid yellow paint w/black yokes and wheels • Single trolley • Chain traverse • Programmable Electronic Control System (ECS) • Electronic, stepless, infinitely variable controls for hoist, traverse and drive • 16.00 x 25 Bias Ply tires • Wheel guards • 8 Lights (4 work, 4 drive)

ENGINE

Make and Model.....Cummins Diesel 4BTA3.9-C130
Fuel.....No. 2 Diesel
No. of Cylinders.....4
Fuel Supply.....Bosch A/RSV/LDA
Air Cleaner.....Dry Type
Oil Filter.....Spin On
Cooling System.....Pressurized Radiator
Horsepower
Gross @ Flywheel.....130 hp @ 2500 rpm
97 kW @ 2200 rpm
Torque, maximum @ Flywheel.....344 lbs. ft. @ 1500 rpm
466 Nm @ 1500 rpm

ELECTRICAL

Voltage.....24 Volt
Alternator.....70 Amps
Batteries (2).....1000 CCA @ 0°F (-18°C) for 30 sec.

MAIN HYDRAULICS

Hoist & Traverse Pump.....2 Piston-type load sensing variable displacement
Hoist & Traverse Control.....Four spool sectional valve
Drive Pump.....Piston type over center variable displacement

DRIVE SYSTEM

Hydrostatic on rear wheels. Two piston motors (one at each rear wheel) drive planetary gear transmissions with a roller chain to the drive sprocket at the wheels.
Chain.....ANSI 140

BRAKING SYSTEM

Service.....Automatic hydrostatic braking
Parking.....MultiDisc "SAHR"¹

STEERING

Electrically controlled hydraulic power rear wheel steer with two double acting cylinders.

TRAVERSE SYSTEM

Direct Chain Drive, one located on each top beam. Each traverse is individually controlled and is driven by a hydraulic motor.
Motor.....Radial Piston
Brake.....MultiDisc "SAHR"¹
Chain.....ANSI 80

HOIST SYSTEM

Hoist drums are directly coupled to a planetary gearbox, one located on each top beam. Each individually controlled. Each hoist is driven by a fixed displacement piston motor integrated with a direct mounted counterbalance valve.

Motor.....Axial Piston
Brake.....MultiDisc "SAHR"¹
Wire Rope.....3/8 Dyform[®] 8, Class 8x19
Reeving.....8 parts per top beam
Sheave Pitch Diameter.....8-15/16" (227mm)

PERFORMANCE

Traverse Speed (Rated Capacity)
Speed.....100 fpm (30.5 m/min)
Slope.....7.5%

Hoist Speed
Rated Capacity.....25.0 fpm (7.6 m/min)
Empty.....26.0 fpm (7.9 m/min)

Final Drive Ratio	Level Drive Speed at Rated Capacity	Gradeability at Rated Capacity	
	Speed	Paved	Gravel
1.55:1	4.0 mph (6.4 km/h)	6.0%	4.1%
1.27:1 ² (smooth runway)	5.0 mph (8.0 km/h)	4.5%	2.8%

SERVICE CAPACITIES

	U.S.	METRIC
Fuel Tank.....	50 gals	189L
Hydraulic System ³	50 to 75 gals	189 to 265L
Hydraulic Reservoir.....	40 gals	151L
Cooling System.....	25 qts	24L
Engine Oil (w/Filter).....	12 qts	11L
Pump Drive Transmission.....	4 qts	3.8L

OPTIONAL EQUIPMENT

Dual/split trolley (specify spacing) • Top beam widths • Column heights • Side beam lengths • Enclosed forward facing cab⁴ • Inward facing cab⁴ • Raised operator cab⁴ • Cab heater • Tinted glass • Windshield wiper • Adjustable bucket seat • Ladder safety device(s) • Transverse steer • Engine block heater • Remote control • Drive camera/monitor kit • AC light package • Auxiliary Hoist • Air conditioner • Air intake pre-cleaner • Maintenance Ladders and Platforms

ACCESSORIES

Spare tire and wheel • American tool kit (recommended for export) • Filter kits (Hydraulic/engine kits available) • Export preparation • Magnet package⁵ • Spreader beams • Spare parts kit

1-"SAHR" spring applied hydraulic release; Automatic Actuation; No mechanical adjustment

2- For hook height of 29'-11" consult factory.

3-System capacity varies depending on height and width of unit.

4-In place of open operator platform

5-Consult factory when adding magnet package.

MJ30 TRAVELIFT® CRANE

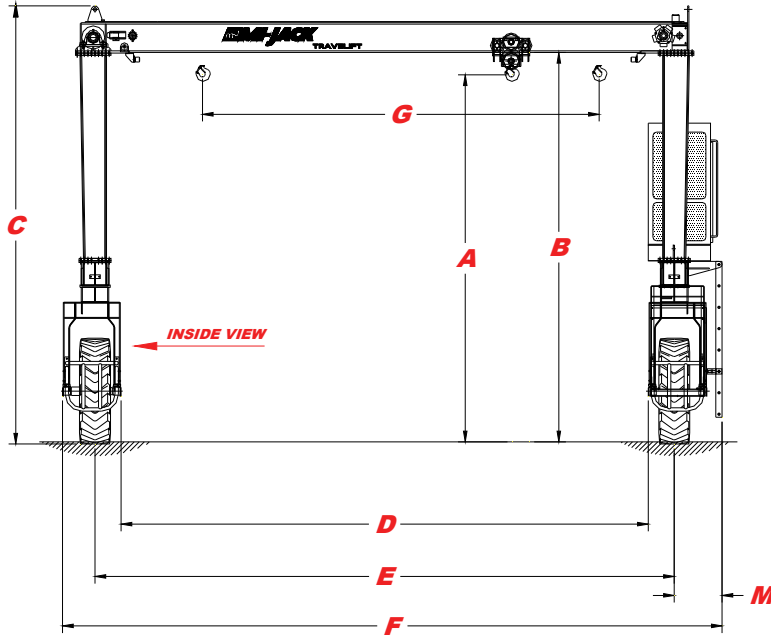
ESTIMATED SHIPPING WEIGHTS:

		I.C.W.				
		14' 9"	29' 9"	39' 9"		
HK HT	14' 11"	35,730 lbs	40,170 lbs	43,130 lbs	19' 0"	WB
		16,207 kg	18,221 kg	19,564 kg		
	39,250 lbs	43,690 lbs	46,650 lbs			
	24' 11"	17,803 kg	19,817 kg	21,160 kg		
	41,010 lbs	45,450 lbs	48,410 lbs			
29' 11"	18,602 kg	20,616 kg	21,959 kg			

1.) Subtract 1,240 lbs for 15' WB

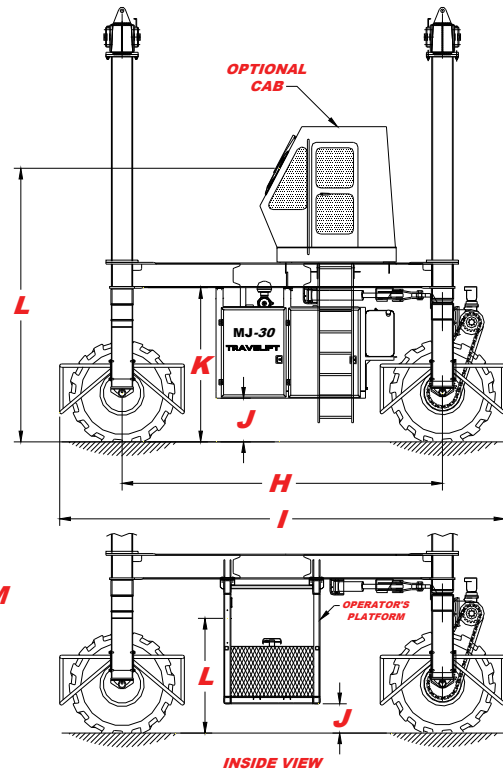
2.) Add 1,030 lbs for 24' WB

DIMENSIONAL DATA



GROUND BEARING PRESSURE:

		I.C.W.				
		14' 9"	29' 9"	39' 9"		
HK HT	14' 11"	107 psi	110 psi	111 psi	19' 0"	WB
	MINSPAN	738 kPa	758 kPa	765 kPa		
	24' 11"	108 psi	111 psi	112 psi		
	MINSPAN	745 kPa	765 kPa	772 kPa		
	29' 11"	108 psi	111 psi	112 psi		
MINSPAN	745 kPa	765 kPa	772 kPa			



Any combination of widths, heights, and lengths shown are available except as noted in charts. Dimensional variations may occur based upon optional equipment characteristics. All crane dimensions are capable of full capacity. Consult factory for optional dimension and ratings.

A HEIGHT TO HK. THROAT ⁽¹⁾	B HEIGHT TO BTTM OF TP BM	C OVERALL HEIGHT	D I.C.W. ⁽²⁾	E TREAD WIDTH	F OVERALL WIDTH AT GROUND	G TROLLEY TRAVEL ⁽³⁾
10'- 11" (3.32 m)	12'- 2" (3.70 m)	††14'- 4" (4.37 m)	7'- 9" (2.36 m)	10'- 1" (3.07 m)	13'- 10" (4.22 m)	4'- 6" (1.37 m)
14'- 11" (4.55 m)	16'- 2" (4.93 m)	18'- 4" (5.59 m)	9'- 9" (2.97 m)	12'- 1" (3.68 m)	15'- 10" (4.83 m)	6'- 6" (1.98 m)
†19'- 11" (6.07 m)	21'- 2" (6.45 m)	23'- 4" (7.11 m)	14'- 9" (4.50 m)	17'- 1" (5.21 m)	20'- 10" (6.35 m)	11'- 6" (3.51 m)
†24'- 11" (7.59 m)	26'- 2" (7.98 m)	28'- 4" (8.64 m)	19'- 9" (6.02 m)	22'- 1" (6.73 m)	25'- 10" (7.87 m)	16'- 6" (5.03 m)
†29'- 11" (9.12 m)	31'- 2" (9.50 m)	33'- 4" (10.16 m)	29'- 9" (9.07 m)	32'- 1" (9.78 m)	35'- 10" (10.92 m)	26'- 6" (8.08 m)
			39'- 9" (12.12 m)	42'- 1" (12.83 m)	45'- 10" (13.97 m)	36'- 6" (11.13 m)

H WHEELBASE & HK. CENTERS	I OVERALL LENGTH	J GROUND CLEARANCE	K GROUND TO SIDE BEAM	L OPERATOR EYE LEVEL	M TREAD CENTER TO LADDER
†15'- 0" (4.57 m)	21'- 0" (6.40 m)	2'- 0" (0.61 m) Engine	7'- 2" (2.18 m)	Platform	6'- 4" (1.93 m)
19'- 0" (5.79 m)	25'- 0" (7.62 m)	1'- 7" (0.48 m) Platform		Forward facing cab	13'- 1" (3.99 m)
24'- 0" (7.32 m)	30'- 0" (9.14 m)			Inward facing cab	13'- 1" (3.99 m)
					2'- 3" (0.69 m)
					2'- 7" (0.79 m)

(1) Single and dual trolley dimensions shown.

(2) Measured from face of yoke.

Subtract 3" (0.08 m) for hardware

(3) Single trolley dimensions shown,

For dual trolley, subtract (trolley spacing + 13" (0.33 m))

† For hook height greater than 14'-11" with 15'-0" wheel base consult factory.

†† Height will increase with enclosed cab.

Steering limitations apply to machines of the following combinations:

7'-9" or 9'-9" ICW with 19' or 24' wheel bases, 14'-9" ICW with 24' wheel base

NOTE: All heights above ground include 2" tire deflection for an unloaded crane. Up to 3" additional should be deducted for tire deflection at rated load. Inside, outside and height dimensions are nominal and may vary due to manufacturing standards and structural deflection.

12/03/07

NOTE: MI-JACK PRODUCTS reserves the right to change specifications without notice and without incurring any obligation relating to such a change.