



ROTO 70.24 S PLUS



Maximum Load Capacity: 15,400 Lbs

Maximum Lift Height: 79' 3"

Maximum Reach: 67' 1"

Load Capacity at Max. Reach: 2,000 Lbs

Load Capacity at Max. Lift: 6,600 Lbs

PERFORMANCE

Turret rotation	Continuous 360°
Unladen Weight (lbs)	43,210
Maximum Load Capacity (lbs)	15,400
Lift Height (ft)	79' 3"
Maximum Reach (ft)	67' 1"
Load Capacity at Max. Lift Height (lbs)	6,600
Load Capacity at Max. Reach (lbs)	2,000
Frame Leveling - front/side (%)	±10° - ±8°

POWERTRAIN

Engine	Iveco
Range / Cylinders	4.5/4
Engine Power (kW/HP)	125/170
Maximum Speed (mph)	25
Automatic Parking Brake	●

HYDRAULIC

Hydraulic Pump	2 - LS + FS
Delivery / Pressure	3770/42.2
Hydraulic couplings	●

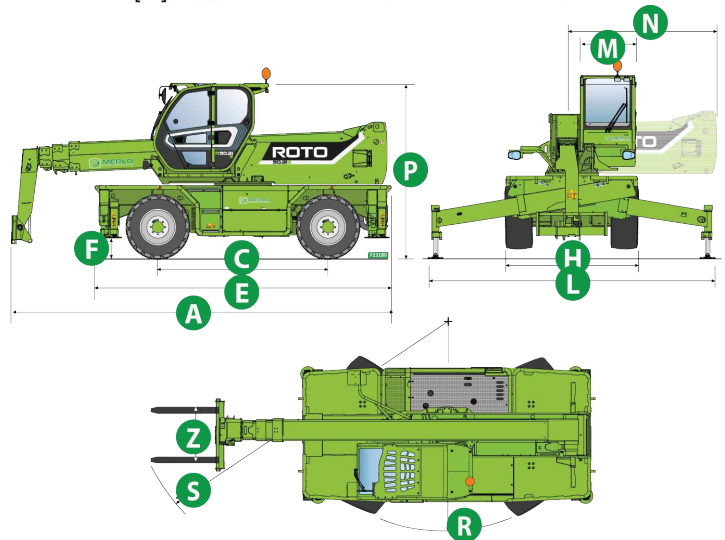
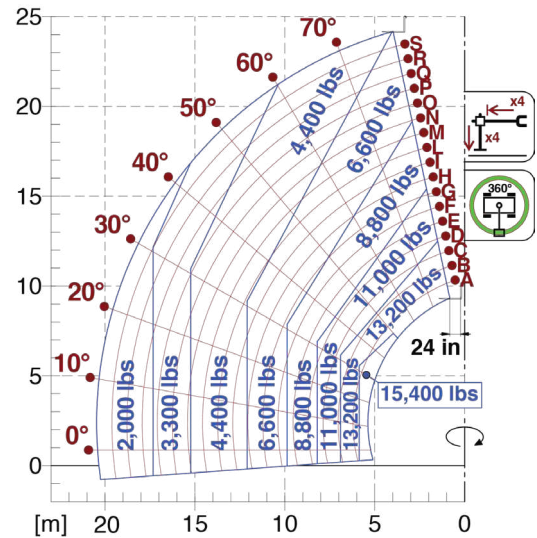
CAB

Cab Finishing	Premium
FOPS LIV II e ROPS	●
Controls	Electronic Joystick
Tilting Cab	●
Reverse shuttle	Dual Reverse

CONFIGURATION

Hydropneumatic Suspension EAS Merlo	●
Tac-lock	●
Pre-arrangement for aerial work platform	●
Standard tires	445/65-R22.5
Hydraulically controlled stabilizers	Multi-position

● Standard ● Optional



DIMENSIONS

A	24' 3"	H	8' 2"	P	7' 11"
C	10' 5"	L	17' 3"	R	14' 9"
E	18' 5"	M	3' 3"	S	22' 2"
F	11"	N	9' 11"	Z	2' 9"

The technical data and other information in this document are not binding. We reserve the right to modify our products without prior notice as part of our policy of continuous improvement

May 2020

IMPORTED & DISTRIBUTED BY



ams-merlo.com

803-327-4949

1205 Galleria Blvd., Rock Hill, SC 29730

Courtesy of CraneMarket.com