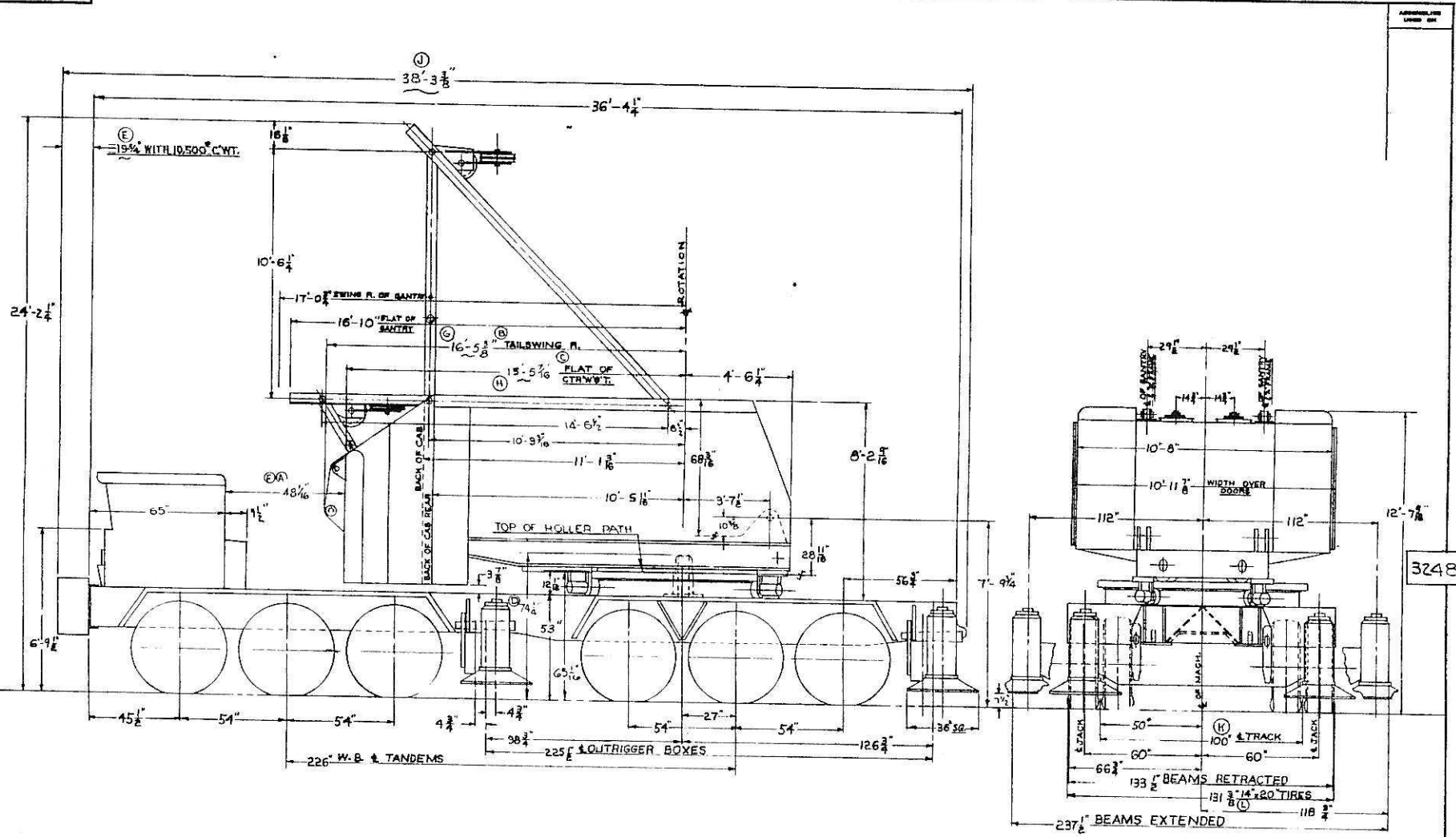


32485



32485

TURNING CIRCLE:
 (MIN. RADIUS - 35'-3" R.H. - 31'-9" L.H.)
 (TURN RADIUS - 50'-11" R.H. - 44'-9" L.H.)
 (SWEEP RADIUS OVER BUMPER - 53'-9" R.H. - 48'-0" L.H.)
 (SWEEP RADIUS OVER C.W.T. BUMPER - 54'-5" R.H. - 48'-9" L.H.)
 FRONT AXLE TRACK - 105"
 KING PIN CENTERS - 84"
 BUMPER WIDTH - 131 1/2"

NOTICE
 THE SEAL BEARING THE MONOGRAM OF
 MANTOWOC ENGINEERING CO.

ALL DIMENSIONS: FINISH SURFACE UNLESS OTHERWISE SPECIFIED.
 IF IT IS CALLED OUT TO BE TO OTHER SPECIFICATIONS, AND
 ON REPAIRS EXCEPT WELDING IS NOT TO BE TOPPED
 OR USED SUBJECT TO DIMENSIONS IN ANY WAY VARYING
 FROM THESE TO OUR DRAWINGS.

DO NOT SCALE THIS DRAW

| | | | |
|------------------------------------------------------------|--|---------------------------------------------------|--|
| C-21-CB DIM WAS 31-11-63 | | MANTOWOC ENGINEERING CORP. MANTOWOC, WISCONSIN | |
| REVISED DATE 12-25-63 REV PRIOR TO 12-1-63 BY W.A.S. | | SPEEDCRANE-MODEL 3900-T | |
| TITLE OUTLINE DIMENSIONS | | FOR | |
| DATE 5-21-65 | | CHASSIS WITH 226" W.B. | |
| SCALE 1/8" = 1'-0" | | PATTERN NO. | |
| MATERIAL | | CODE NO. | |
| DRAWN BY S | | 32485-1 | |
| CHECKED BY W.A.S. | | 32485 | |