

# MHT 790

HEAVY CAPACITY telescopic handler



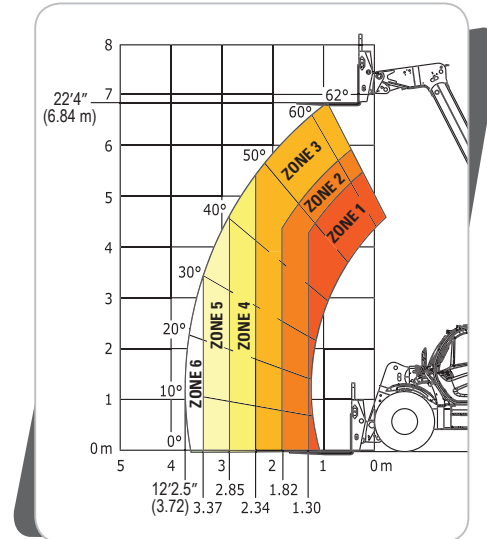
## KEY FEATURES

- > Maximum Capacity of 20,000 lbs. (9000 kg)
- > 22 ft. 4 in (6.84 m) Lift Height
- > 141 HP (104 kW) John Deere Tier IV Engine
- > 4-Wheel Drive / 4-Wheel Steer
- > JSM Joystick Controls
- > High Ground Clearance
- > Hydrostatic Transmission
- > Solid-Frame Design
- > Easy to Maintain
- > Variety of Attachments -  
Compatible with MHT 1490

## MHT 790 HEAVY CAPACITY TELESCOPIC HANDLER SPECIFICATIONS

MHT 790		
KEY PERFORMANCE	Lift Capacity (kg)	20,000 lbs. (9000)
	Maximum Lift Height (m)	22'4" (6.84 m)
	Capacity at Maximum Lift Height (kg)	13,227 lbs. (6000)
	Maximum Forward Reach (m)	12'2.5" (3.72 m)
	Capacity at Maximum Forward Reach (kg)	7,716 lbs. (3500)
ENGINE	Manufacturer	John Deere
	Power (kW)	141 hp (104)
	Model	4045PWX Tier IV
	Maximum Torque (Nm) @ 1400 rpm	317 ft.-lbs. (430)
COMPONENTS	Transmission	Hydrostatic
	Maximum Travel Speed (km/hr)	18.64 mph (30)
	Selective Steering	2-Wheel, 4-Wheel, Crab
	Service Brake	Multiple disc brakes, hydraulic front and rear axles
	Parking Brake	Automatic
HYDRAULICS	Pump Type	Axial Piston Variable Displacement
	Total Capacity (L/min)	47.5 gpm (180)
	System Pressure (bar)	3916 psi (270)
GENERAL SPECIFICATIONS	A. Front Wheel Center to Carriage (m)	3'8" (1.13)
	B. Wheelbase (m)	9'5" (2.87)
	C. Rear Wheel Center to Rear Face (m)	4'2" (1.28)
	D. Length - Without Forks (m)	17'4" (5.27)
	G. Ground Clearance (mm)	16" (409)
	H. Overall Height (m)	8'2" (2.48)
	J. Overall Width of Cab (mm)	35" (884)
	W. Overall Width (to Outside of Tires) (m)	8'1" (2.47)
	Approximate Weight (kg)	28,704 lbs. (13,020)
	Outside Turning Radius (m)	16'0" (4.88)
	Standard Tires	445 / 65 R22.5

### Load Chart with Forks



Load chart based on 24 inch (600 mm) load center per B56.6.

- MHT 790 Load Zones
1. 20,000 lbs. (9000 kg)
  2. 16,534 lbs. (7500 kg)
  3. 13,228 lbs. (6000 kg)
  4. 11,023 lbs. (5000 kg)
  5. 9,259 lbs. (4200 kg)
  6. 7,716 lbs. (3500 kg)

### ATTACHMENT SELECTION

#### FORKS AND CARRIAGES

Shaft Type Carriages with Forks	●
Shaft Type with Hydraulic Fork Positioner	●
Shaft Type, w/ Side Shifting Fork Positioner, <b>Requires Dual Hydraulics</b>	●

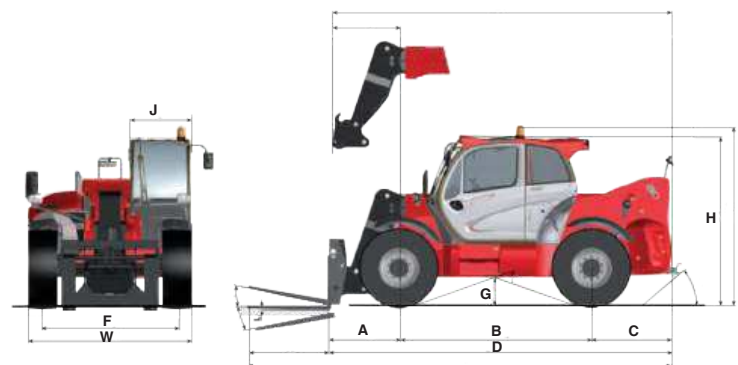
#### JIBS, HOOKS, AND WINCHES

Hooks, Capacity from 20,000 lbs. (9T)	●
Jib with 3 Hooks, Capacity 20,000 lbs. (9T)	●

#### TIRE HANDLERS

Tire Handler, TH33, 23.6" to 82.7" (600-2100 mm), 4,409 lbs. (2000 kg) Capacity, <b>Requires Return to Tank and Predisposition</b>	●
--	---

### DIMENSIONS REFERENCE DIAGRAMS



MANITOU AMERICAS, INC. • PO Box 179 • West Bend, WI 53095  
Tel: 262-334-9461 • Fax: 262-338-7517 • www.manitou.com

This publication in no way constitutes an offer and the company reserves the right to alter specifications without notice.

©2017 Manitou Americas, Inc. Manitou. All rights reserved.  
Printed in the U.S.A. A Manitou Group Brand.

Courtesy of CraneMarket.com