

Technical sheet :

# **MRT 3255 PRIVILEGE PLUS**

---



| Capacities   |           | Metric   | Imperial                                       |
|--|-----------|--|--|
| Max. capacity  | Q         | 5500 kg  | 12125 lbs                                      |
| Max. lifting height  | h3        | 31.6 m   | 103 ft 8 in                                    |
| Max. Reach   | l4        | 27.2 m   | 89 ft 3 in                                     |
| Weight and dimensions  |           |  |  |
| Ground clearance center  | m4        | 0.42 m   | 1 ft 5 in                                      |
| Wheelbase  | y         | 3.75 m   | 12 ft 4 in                                     |
| Length to face of forks  | l2        | 8.5 m  | 27 ft 11 in                                    |
| Length of frame  | l14       | 6.57 m   | 21 ft 7 in                                     |
| Overall length (with forks)                                      | l1        | 8.5 m  | 27 ft 11 in                                    |
| Overall width  | b1        | 2.5 m  | 8 ft 2 in                                      |
| Overall width with stabilisers extended                          | b7        | 7.1 m  | 23 ft 4 in                                     |
| Overall height   | h17       | 3.2 m  | 10 ft 6 in                                     |
| Overall cab width  | b4        | 0.99 m   | 3 ft 3 in                                      |
| Tilt-down angle  | a5        | 105 °  | 105 °  |
| Tilt-up angle  | a4        | 12 °   | 12 °   |
| Forks length / width / section                                   | l / e / s | 1200 mm x 50 mm x 15 mm                        | 47.244 in x 1.969 in x 0.591 in                |
| Turret rotation  |           | 360 °  | 360 °  |
| Outer frame turning radius                                       | Wa3       | 5.56 m   | 18 ft 3 in                                     |
| Internal turning radius (over tyres)                             | b13       | 1.9 m  | 6 ft 3 in                                      |
| Overall weight   |           | 23986 kg                                       | 52880 lbs                                      |
| Wheels   |           |  |  |
| Tyres type   |           | Pneumatic                                      | Pneumatic                                      |
| Steering wheels (front / rear)                                   |           | 2 / 2  | 2 / 2  |
| Drive wheels (front / rear)                                      |           | 2 / 2  | 2 / 2  |
| Stabilisers  |           |  |  |
| Stabs Type   |           | Telescopic Triplex                             | Telescopic Triplex                             |
| Controls with stabs  |           | Stabs Commands Individual or Simultaneous      | Stabs Commands Individual or Simultaneous      |
| Engine   |           |  |  |
| Engine brand   |           | Mercedes                                       | Mercedes                                       |
| Engine norm  |           | Stage IV / Tier 4 Final                        | Stage IV / Tier 4 Final                        |
| Engine model   |           | OM 934 LA.E4-1                                 | OM 934 LA.E4-1                                 |
| I.C. Engine power rating / Power (kW)                            |           | 231 Hp / 170 kW                                | 231 Hp / 170 kW                                |
| Max. torque / Engine rotation                                    |           | 1600 Nm @ 1200 tr/min                          | 1600 Nm @ 1200 tr/min                          |
| Number of cylinders - Capacity of cylinders                      |           | 3400 - 5130 cm <sup>3</sup>                    | 3400 - 313.05 in <sup>3</sup>                  |
| Injection  |           | engine Injection direct                        | engine Injection direct                        |
| Engine cooling system  |           | Water  | Water  |
| Number of batteries  |           | 2  | 2  |
| Battery / Batteries capacity                                     |           | 12 V / 120 Ah                                  | 12 V / 120 Ah                                  |
| Drawbar pull (Laden)   |           | 10500 daN                                      | 10500 daN                                      |
| Transmission   |           |  |  |
| Transmission type  |           | CVT  | CVT  |
| Max. travel speed (may vary according to applicable regulations) |           | 40 km/h  | 24.9 mph                                       |
| Parking brake  |           | Automatic Negative Hand-brake                  | Automatic Negative Hand-brake                  |
| Service brake  |           | Oil-immersed multi-discs on front & rear axles | Oil-immersed multi-discs on front & rear axles |
| Hydraulics   |           |  |  |
| Hydraulic pump type  |           | Variable pump                                  | Variable pump                                  |
| Hydraulic flow   |           | 210 l/min                                      | 210 l/min                                      |
| Hydraulic Pressure   |           | 350 Bar  | 24 PSI   |
| Tank capacities  |           |  |  |
| Engine oil   |           | 297 l  | 65.33 gal                                      |
| Hydraulic oil  |           | 297 l  | 65.33 gal                                      |
| Fuel tank  |           | 361 l  | 79.41 gal                                      |
| Diesel Exhaust fluid (AdBlue® type)                              |           | 54 l   | 11.88 gal                                      |
| Noise and vibration  |           |  |  |
| Noise at driving position (LpA)                                  |           | 80 dB(A)                                       | 80 dB(A)                                       |
| Noise to environment (LwA)                                       |           | 106 dB(A)                                      | 106 dB(A)                                      |
| Vibration to whole hand/arm                                      |           | < 2.50 m/s <sup>2</sup>                        | < 2.50 m/s <sup>2</sup>                        |
| Miscellaneous  |           |  |  |
| Controls   |           | 2 Joysticks                                    | 2 Joysticks                                    |
| Safety cabin homologation  |           | Cab ROPS - FOPS Level 2                        | Cab ROPS - FOPS Level 2                        |

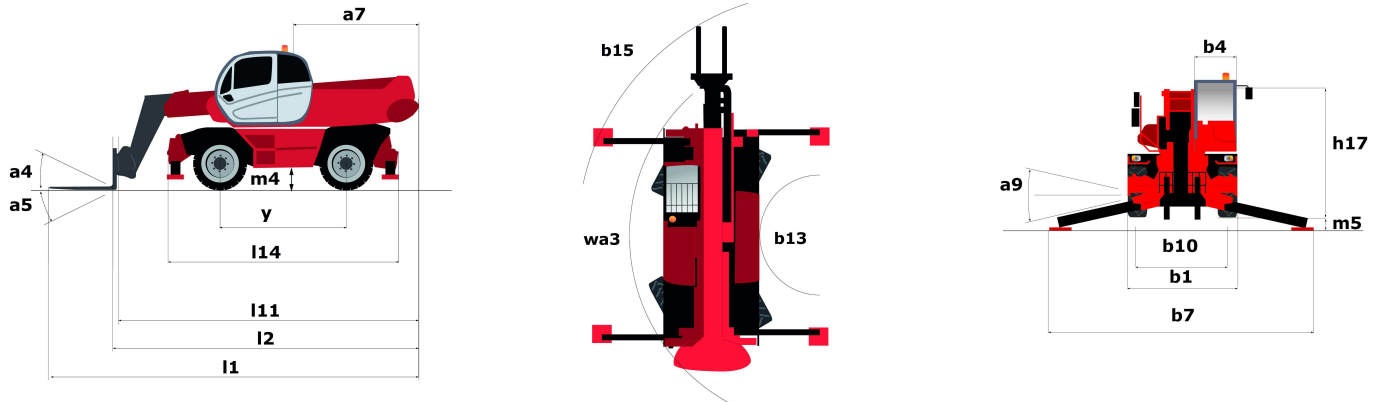
Miscellaneous

Attachment recognition system (E-Reco)

Standard

Standard

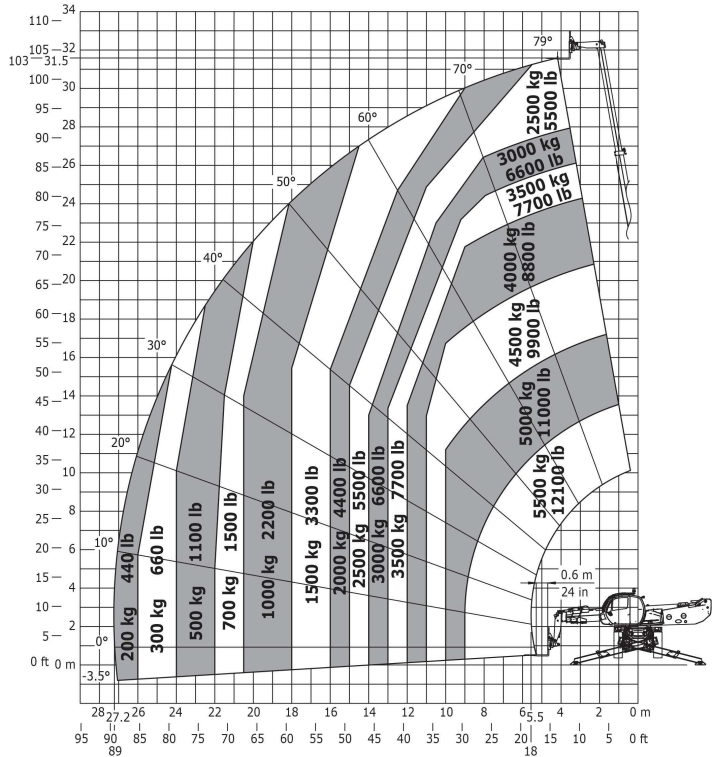
## Dimensional drawing



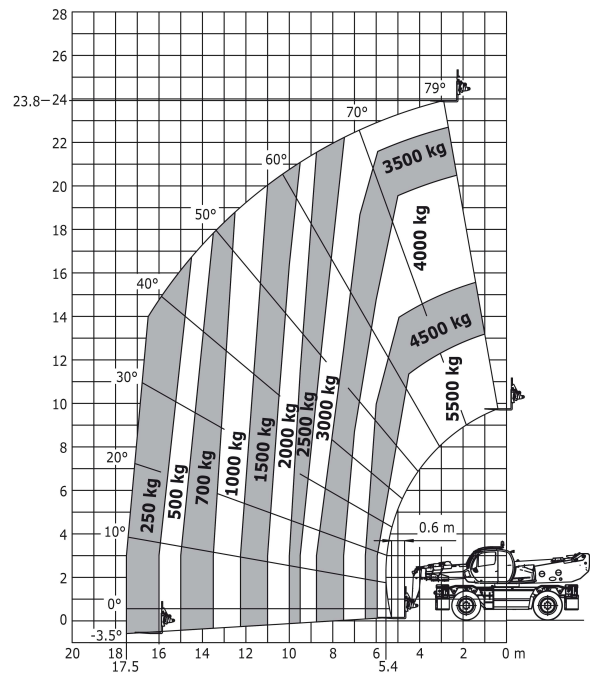
| Other data                              |     | Metric | Imperial    |
|---|-----|--------|-------------|
| Overall length (with forks)             | l1  | 8.5 m  | 27 ft 11 in |
| Length to face of forks                 | l2  | 8.5 m  | 27 ft 11 in |
| Length of frame                         | l14 | 6.57 m | 21 ft 7 in  |
| Wheelbase                               | y   | 3.75 m | 12 ft 4 in  |
| Ground clearance center                 | m4  | 0.42 m | 1 ft 5 in   |
| Counterweight offset (turret at 90°)    | a7  | 3.8 m  | 12 ft 6 in  |
| Tilt-up angle                           | a4  | 12 °   | 12 °        |
| Tilt-down angle                         | a5  | 105 °  | 105 °       |
| Overall length at stabilisers           | l12 | 6.49 m | 21 ft 4 in  |
| Outer frame turning radius              | Wa3 | 5.56 m | 18 ft 3 in  |
| Outer turning radius (with forks)       | b15 | 5.56 m | 18 ft 3 in  |
| Overall width                           | b1  | 2.5 m  | 8 ft 2 in   |
| Overall width with stabilisers extended | b7  | 7.1 m  | 23 ft 4 in  |
| Overall cab width                       | b4  | 0.99 m | 3 ft 3 in   |
| Overall height                          | h17 | 3.2 m  | 10 ft 6 in  |
| Frame Levelling Corrector               | a9  | 8 °    | 8 °         |

# Load chart

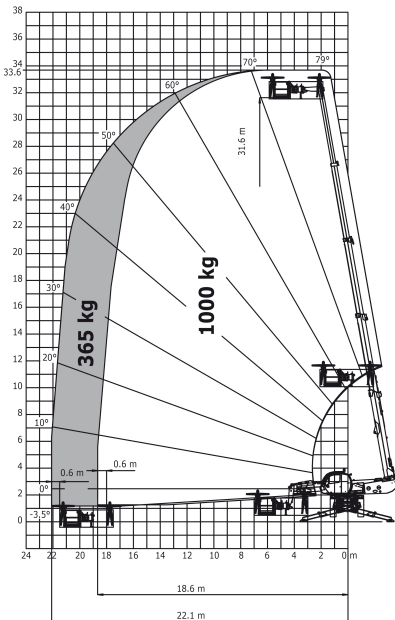
Load Chart metric



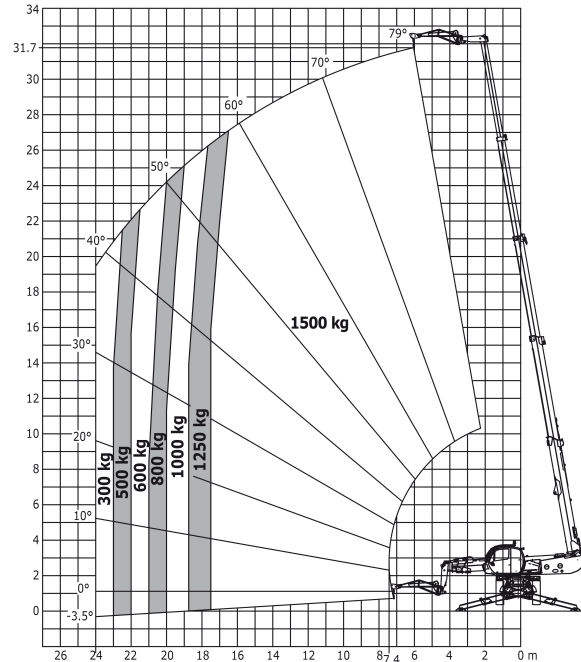
Machine on tyres with forks Metric



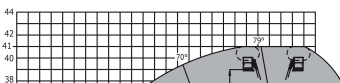
Rotation on lowered stabilisers with 1000 kg platform Metric



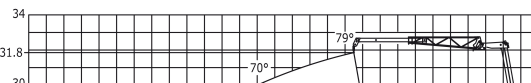
Rotation on lowered stabilisers with 1500 kg jib Metric

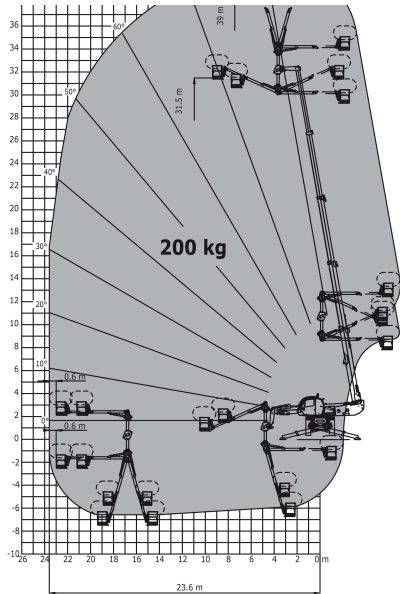


Rotation on lowered stabilisers with 3D positive / negative Metric

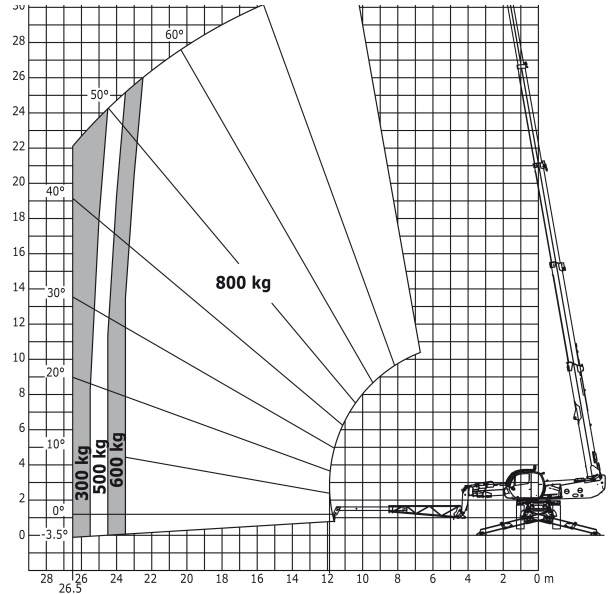


Rotation on lowered stabilisers with 800 kg jib Metric

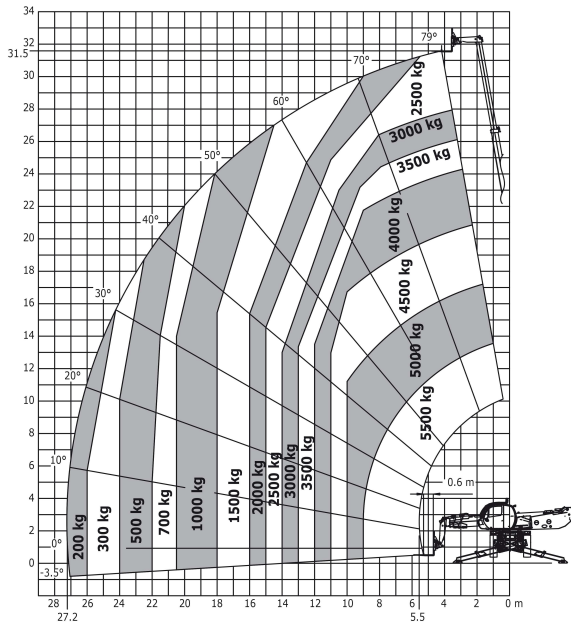




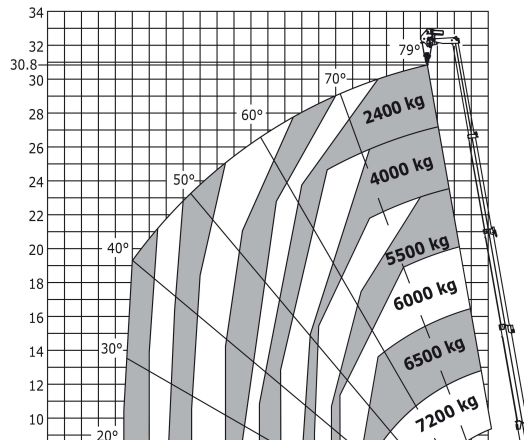
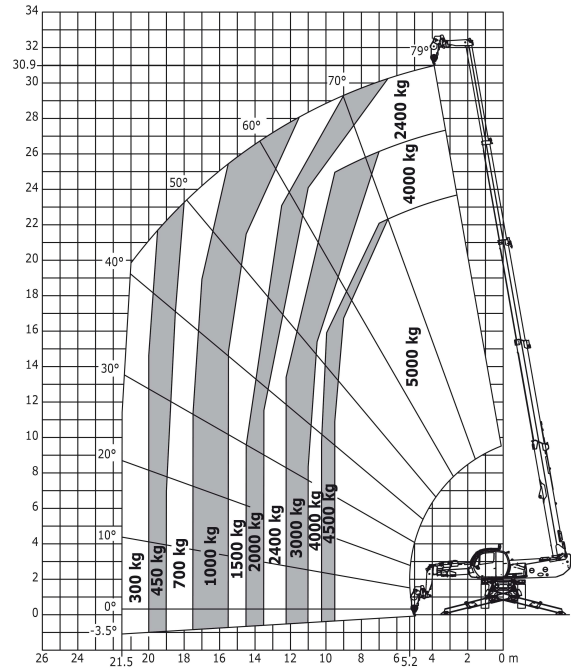
Rotation on lowered stabilisers with forks  
Metric

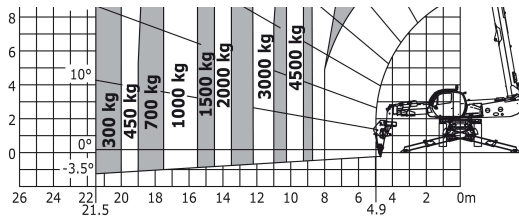


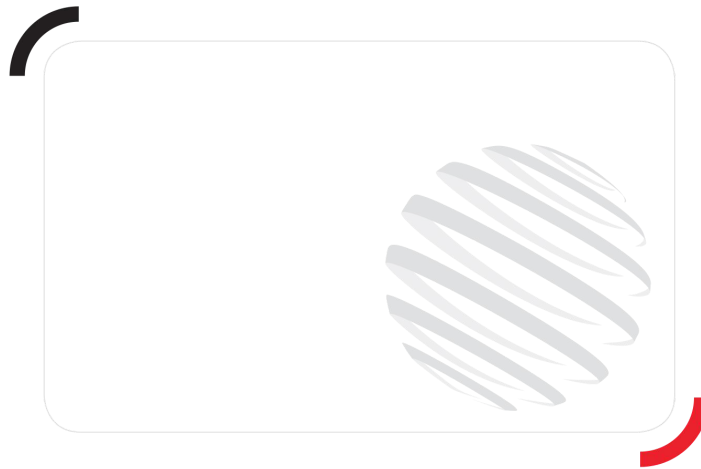
Rotation on lowered stabilisers with winch  
5000 kg Metric



Rotation on lowered stabilisers with winch  
7000 kg Metric







Siège Social  
430 rue de l'Aubinière - 44150 Ancenis Cedex - France  
Tel: +33(0)2 40 09 10 11 - Fax: +33 (0)2 40 09 10 97  
[www.manitou.com](http://www.manitou.com)



This brochure describes versions and configuration options for Manitou products which may be fitted with different equipment. The equipment described in this brochure may be standard, optional or not available depending on version. Manitou reserves the right to change the specifications shown and described at any time and without prior warning. The manufacturer is not liable for the specifications given. For more information, contact your Manitou dealer. Non-contractual document. Product descriptions may differ from actual products. List of specifications is not comprehensive. The logos and visual identity of the company are the property of Manitou and may not be used without authorisation. All rights reserved. The photos and diagrams contained in this brochure are provided for information only.

MANITOU BF SA - Limited company with board of directors - Share capital: 39,668,399 euros - 857 802 508  
RCS Nantes