

Technical sheet :

# **TMT 55 HT 4W**

---

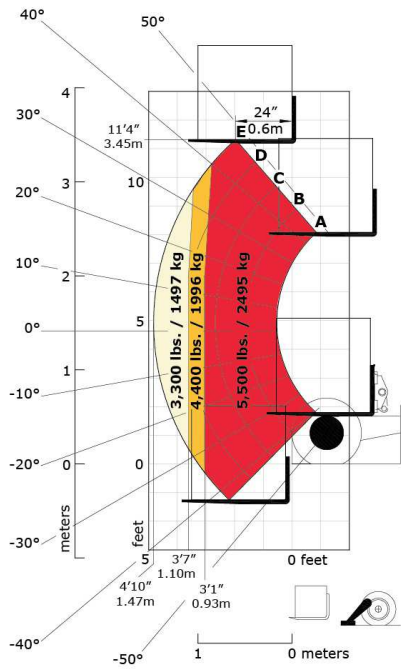


	Technical characteristics		Imperial
1.1	Manufacturer		Manitou
1.2	Model Name		TMT 55 HT 4W
1.2.1	Reach out equipment		Telescopic boom
1.3	Power source		Diesel
1.4	Operator type		Seated
1.5	Max. capacity	Q	5511 lbs
	<b>Weight</b>		
2.1	Service weight		6355 lbs
	<b>Wheels</b>		
3.2	Dimensions of front wheels		31 x 10 - 16,5"
3.3	Dimensions of rear wheels		31x15,5-15
3.5	Number of front wheels / rear wheels		2 / 1
3.5.2	Drive wheels (front / rear)		2 / 1
	<b>Dimensions</b>		
4.4	Max. lifting height	h3	11 ft 3 in
4.5	Height telescopic boom extended	h4	12 ft 10 in
4.20	Length to face of forks	l2	9 ft 7 in
4.21	Overall width	b1	8 ft 5 in
4.22	Forks section / width / length	s / e / l	2 in x 4 in / 4 ft
4.28	Max. Reach	l4	4 ft 4 in
4.35	Turning radius	Wa	8 ft 7 in
	<b>Performances</b>		
5.1	Travel speed (laden)		6.8 mph
5.10	Service brake		Hydrostatic
5.11	Transmission type		Hydrostatic
	<b>Engine</b>		
7.1	Engine brand / norm		Kubota - Tier IV Final
7.2	Engine power according to ISO 1585		37 kW
7.3	Rated speed		2700 rpm
7.4	Capacity of cylinders		148.53 in³
	<b>Miscellaneous</b>		
8.2	Working hydraulic pressure for attachments		16 PSI
8.3	Oil flow rate for attachments		46 l/min

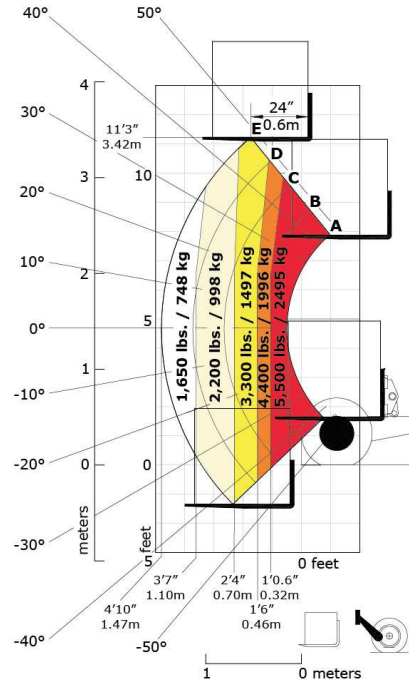


# Load chart

Machine on stabilizers with forks Imperial



Machine on tyres with forks Imperial





Siège Social

430 rue de l'Aubinière - 44150 Ancenis Cedex - France

Tel: +33(0)2 40 09 10 11 - Fax: +33 (0)2 40 09 10 97

[www.manitou.com](http://www.manitou.com)



This brochure describes versions and configuration options for Manitou products which may be fitted with different equipment. The equipment described in this brochure may be standard, optional or not available depending on version. Manitou reserves the right to change the specifications shown and described at any time and without prior warning. The manufacturer is not liable for the specifications given. For more information, contact your Manitou dealer. Non-contractual document. Product descriptions may differ from actual products. List of specifications is not comprehensive. The logos and visual identity of the company are the property of Manitou and may not be used without authorisation. All rights reserved. The photos and diagrams contained in this brochure are provided for information only.

MANITOU BF SA - Limited company with board of directors - Share capital: 39,668,399 euros - 857 802 508 RCS Nantes