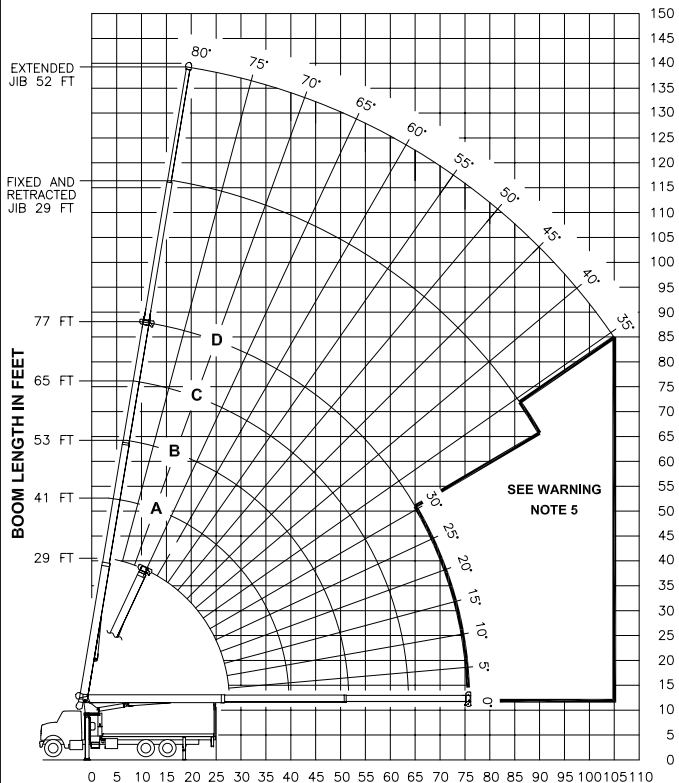


RANGE DIAGRAM



OPERATING RADIUS FROM CENTERLINE OF ROTATION IN FEET

HEIGHT ABOVE GROUND IN FEET

LOAD RATINGS IN LBS WITH OUTRIGGERS AND STABILIZERS EXTENDED

BOOM LENGTH (FT)	BOOM ANGLE				BOOM ANGLE		BOOM ANGLE		BOOM ANGLE		JIB LOAD RATINGS WITH OUTRIGGERS AND STABILIZERS EXTENDED				
	29 FT	41 FT	53 FT	65 FT	77 FT	1ST	2ND	BOOM ANGLE	BOOM ANGLE	BOOM ANGLE	BOOM ANGLE	29 FT JIB FOR ALL BOOM LENGTHS SEE WARNING NOTE 4	52 FT JIB FOR ALL BOOM LENGTHS SEE WARNING NOTE 4		
5	80	44000													
8	74	29600													
10	69	24870	76	22000											
12	65	21510	73	20160	78	16490									
14	60	18960	70	17710	75	14390	79	13860							
17	53	16080	66	15010	72	12070	76	11580	79	11500					
20	45	13830	61	13010	69	10390	73	9930	77	9560					
25	27	10490	52	10600	63	8410	69	8000	73	7670					
30			42	8770	56	7010	64	6660	69	6350					
35			30	7120	49	5930	59	5650	65	5390					
40					41	5030	53	4860	61	4640					
45					31	4170	47	4210	56	4030					
50					17	3070	40	3630	51	3530					
55							33	3070	46	3080					
60							22	2410	40	2680					
65															
70									34	2280					
75									25	1840					
80									13	1220					
85											80	43	960	55	1200
90											85	39	760	52	1060
95											90	34	560	49	940
100											95			46	790
105											100			43	650
105											105			39	510

680 LBS. 480 LBS. 370 LBS. 300 LBS. 260 LBS. DEDUCTIONS FOR STOWED JIB

WARNING

1. THE OPERATOR MUST READ AND UNDERSTAND THE OWNER'S MANUAL BEFORE OPERATING THIS CRANE.
2. POSITIONING OR OPERATION OF CRANE BEYOND AREAS SHOWN ON THIS CHART IS NOT INTENDED OR APPROVED EXCEPT WHERE SPECIFIED IN OWNER'S MANUAL.
3. LOADED BOOM ANGLES AT SPECIFIED BOOM LENGTHS GIVE ONLY AN APPROXIMATION OF THE OPERATING RADIUS. THE BOOM ANGLE BEFORE LOADING SHOULD BE GREATER TO ACCOUNT FOR DEFLECTIONS. DO NOT EXCEED THE OPERATING RADIUS FOR RATED LOADS.
4. THE OPERATING RADIUS SHOWN IN THE JIB RATING CHART IS FOR FULLY EXTENDED BOOM ONLY. WHEN BOOM IS NOT FULLY EXTENDED, USE ONLY LOADED BOOM ANGLE TO DETERMINE LOAD RATING OF JIB. DO NOT RELY ON CAPACITY ALERT SYSTEM WHEN LIFTING FROM JIB.
5. BOOM MUST BE FULLY RETRACTED WHEN JIB IS ERECTED, BEFORE LOWERING BOOM THRU THIS AREA.
6. FOR BOOM ANGLES NOT SHOWN ON JIB LOAD RATING CHART, USE RATING OF NEXT LOWER BOOM ANGLE.
7. FOR BOOM LENGTHS NOT SHOWN, USE RATING OF NEXT LONGER BOOM LENGTH. FOR RADII NOT SHOWN, USE RATING OF NEXT LONGER RADIUS.
8. CRANE LOAD RATINGS ON OUTRIGGERS ARE BASED ON FREELY SUSPENDED LOADS WITH THE MACHINE LEVELLED AND STANDING ON A FIRM UNIFORM SUPPORTING SURFACE. NO ATTEMPT SHALL BE MADE TO MOVE A LOAD HORIZONTALLY ON THE GROUND IN ANY DIRECTION.
9. PRACTICAL WORKING LOADS DEPEND ON SUPPORTING SURFACE, WIND, AND OTHER FACTORS AFFECTING STABILITY SUCH AS HAZARDOUS SURROUNDINGS, EXPERIENCE OF PERSONNEL, AND PROPER HANDLING, ALL OF WHICH MUST BE TAKEN INTO ACCOUNT BY THE OPERATOR.
10. THE MAXIMUM LOAD WHICH MAY BE TELESCOPED IS LIMITED BY HYDRAULIC PRESSURE, BOOM ANGLE, AND BOOM LUBRICATION. IT IS SAFE TO ATTEMPT TO TELESCOPE ANY LOAD WITHIN THE LIMITS OF THE LOAD RATING CHART.

INFORMATION

1. DEDUCTIONS MUST BE MADE FROM RATED LOADS FOR STOWED JIB, OPTIONAL ATTACHMENTS, HOOKS, AND LOAD-BLOCKS (SEE DEDUCTION CHART). WEIGHTS OF SLINGS AND ALL OTHER LOAD HANDLING DEVICES SHALL BE CONSIDERED A PART OF THE LOAD.
2. CRANE LOAD RATINGS WITH OUTRIGGERS ARE BASED ON OUTRIGGERS AND STABILIZERS EXTENDED AND SET WITH MACHINE LEVELLED.
3. LOAD RATINGS ABOVE THE HEAVY LINE ARE STRUCTURALLY LIMITED CAPACITIES. LOAD RATINGS BELOW THE HEAVY LINE ARE STABILITY LIMITED CAPACITIES AND DO NOT EXCEED 85% OF TIPPING.

DEFINITIONS

1. OPERATING RADIUS IS THE HORIZONTAL DISTANCE FROM THE AXIS OF ROTATION TO THE CENTER OF THE VERTICAL HOIST LINE OR TACKLE WITH LOAD APPLIED.
2. LOADED BOOM ANGLE AS SHOWN IN THE COLUMN HEADED BY \angle , IS THE INCLUDED ANGLE BETWEEN THE HORIZONTAL AND LONGITUDINAL AXES OF THE BOOM BASE AFTER LIFTING RATED LOAD AT RATED RADIUS.

ALLOWABLE LINE PULL						WARNING
1 PART LINE	2 PART LINE	3 PART LINE	4 PART LINE	5 PART LINE	6 PART LINE	
						<p>ANTI-TWO-BLOCK SYSTEM MUST BE IN GOOD OPERATING CONDITION BEFORE OPERATING CRANE. REFER TO OWNER'S MANUAL.</p> <p>KEEP AT LEAST 3 WRAPS OF LOAD LINE ON DRUM AT ALL TIMES.</p>
8500 LBS	17000 LBS	25500 LBS	34000 LBS	42500 LBS	44000 LBS	
7400 LBS	14800 LBS	22200 LBS	29600 LBS	37000 LBS	44000 LBS	<p>9/16" - 6X25 HRC (3.5:1 S.F.) 29750 LBS. BREAKING STRENGTH</p> <p>9/16" ROT RESISTANT (5.0:1 S.F.) 37000 LBS. BREAKING STRENGTH</p>

DEDUCTIONS FROM RATED LOADS FOR LOAD HANDLING DEVICES SUPPLIED BY MANITEX.

AUXILIARY BLOCK	-----	50 LBS
OVERHAUL BALL	-----	SEE OVERHAUL BALL MFR NAMEPLATE
SINGLE SHEAVE LOAD BLOCK	-----	SEE BLOCK MFR NAMEPLATE
HOSE REEL	-----	160 LBS
SWING AROUND JIB	-----	SEE LOAD CHART

WARNING

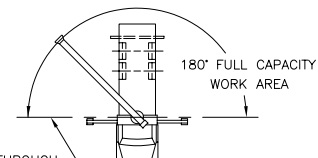
LIFTING OFF THE MAIN BOOM POINT WHILE THE SWING AROUND JIB IS ERECTED IS NOT INTENDED OR APPROVED.

Manitex

MODELS
2277C & 2277T

CRANE MEETS ANSI B30.5 REQUIREMENTS

7300087-001 NR



LINE THROUGH CENTERLINE OF ROTATION

AREA OF OPERATION