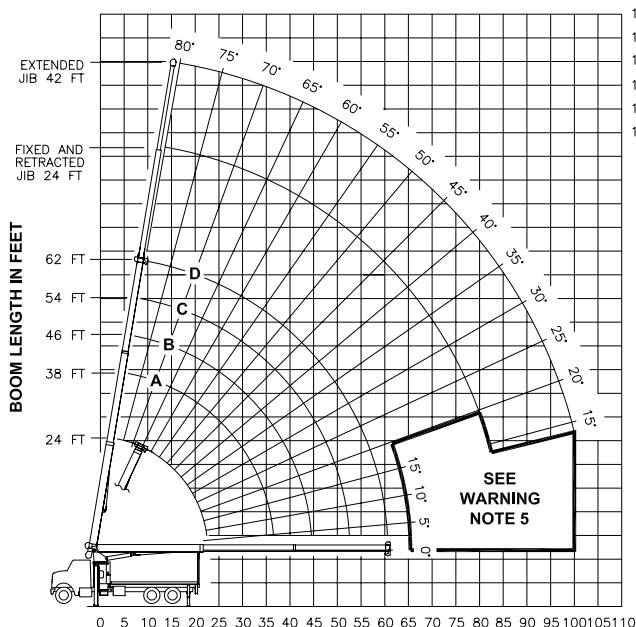


RANGE DIAGRAM



OPERATING RADIUS FROM CENTERLINE OF ROTATION IN FEET

HEIGHT ABOVE GROUND IN FEET

LOAD RATINGS IN LBS WITH OUTRIGGERS AND STABILIZERS EXTENDED

OPERATING HEIGHT	BOOM LENGTH AND ANGLE	BOOM ANGLE				
		A	B	C	D	
	24 FT	38 FT	46 FT	54 FT	62 FT	
5	77	44000				
8	70	31020				
10	64	26230	75 22930	78 20050		
12	59	22780	72 20820	75 17220	78 16760	
14	53	20120	68 18370	73 15120	76 14670	78 14290
17	43	16950	63 15640	69 12800	73 12370	75 12020
20	30	14090	58 13630	65 11100	69 10710	73 10370
25		48 11140	57 9070	63 8730	68 8450	25 75 5670
30		37 9180	49 7610	57 7350	62 7100	30 71 4920
35		19 7000	40 6410	50 6290	57 6090	35 68 4320
40			28 5260	43 5410	51 5290	40 64 3820
45				33 4600	44 4610	45 60 3380
50				20 3640	37 4000	50 56 2970
55					27 3360	55 52 2620
60					14 2500	60 47 2320
65						65 43 2060
70						70 37 1840
75						75 31 1590
80						80 22 1230
85						85 17 740
90						90 17 740
95						95 17 740
100						100 17 740

JIB LOAD RATINGS WITH OUTRIGGERS AND STABILIZERS EXTENDED

OPERATING HEIGHT	BOOM LENGTH	24 FT JIB FOR ALL BOOM LENGTHS SEE WARNING NOTE 4		BOOM ANGLE	42 FT JIB FOR ALL BOOM LENGTHS SEE WARNING NOTE 4
		RATED LOAD IN POUNDS	RATED LOAD IN POUNDS		
10					
12					
14					
17	80	7240			
20	78	6600			
25	75	5670	78	4080	
30	71	4920	75	3660	
35	68	4320	72	3310	
40	64	3820	69	3000	
45	60	3380	66	2720	
50	56	2970	63	2470	
55	52	2620	60	2260	
60	47	2320	57	2080	
65	43	2060	54	1920	
70	37	1840	50	1760	
75	31	1590	46	1610	
80	22	1230	42	1480	
85			37	1340	
90			32	1210	
95			26	1070	
100			17	740	

580 LBS. 370 LBS. 310 LBS. 260 LBS. 230 LBS. DEDUCTIONS FOR STOWED JIB

WARNING

- THE OPERATOR MUST READ AND UNDERSTAND THE OWNER'S MANUAL BEFORE OPERATING THIS CRANE.
- POSITIONING OR OPERATION OF CRANE BEYOND AREAS SHOWN ON THIS CHART IS NOT INTENDED OR APPROVED EXCEPT WHERE SPECIFIED IN OWNER'S MANUAL.
- LOADED BOOM ANGLES AT SPECIFIED BOOM LENGTHS GIVE ONLY AN APPROXIMATION OF THE OPERATING RADIUS. THE BOOM ANGLE BEFORE LOADING SHOULD BE GREATER TO ACCOUNT FOR DEFLECTIONS. DO NOT EXCEED THE OPERATING RADIUS FOR RATED LOADS.
- THE OPERATING RADIUS SHOWN IN THE JIB RATING CHART IS FOR FULLY EXTENDED BOOM ONLY. WHEN BOOM IS NOT FULLY EXTENDED, USE ONLY LOADED BOOM ANGLE TO DETERMINE LOAD RATING OF JIB. DO NOT RELY ON CAPACITY ALERT SYSTEM WHEN LIFTING FROM JIB.
- BOOM MUST BE FULLY RETRACTED WHEN JIB IS ERECTED, BEFORE LOWERING BOOM THRU THIS AREA.
- FOR BOOM ANGLES NOT SHOWN ON JIB LOAD RATING CHART, USE RATING OF NEXT LOWER BOOM ANGLE.
- FOR BOOM LENGTHS NOT SHOWN, USE RATING OF NEXT LONGER BOOM LENGTH. FOR RADI NOT SHOWN, USE RATING OF NEXT LONGER RADIUS.
- CRANE LOAD RATINGS ON OUTRIGGERS ARE BASED ON FREELY SUSPENDED LOADS WITH THE MACHINE LEVELED AND STANDING ON A FIRM UNIFORM SUPPORTING SURFACE. NO ATTEMPT SHALL BE MADE TO MOVE A LOAD HORIZONTALLY ON THE GROUND IN ANY DIRECTION.
- PRACTICAL WORKING LOADS DEPEND ON SUPPORTING SURFACE, WIND, AND OTHER FACTORS AFFECTING STABILITY SUCH AS HAZARDOUS SURROUNDINGS, EXPERIENCE OF PERSONNEL, AND PROPER HANDLING, ALL OF WHICH MUST BE TAKEN INTO ACCOUNT BY THE OPERATOR.
- THE MAXIMUM LOAD WHICH MAY BE TELESCOPED IS LIMITED BY HYDRAULIC PRESSURE, BOOM ANGLE, AND BOOM LUBRICATION. IT IS SAFE TO ATTEMPT TO TELESCOPE ANY LOAD WITHIN THE LIMITS OF THE LOAD RATING CHART.

INFORMATION

- DEDUCTIONS MUST BE MADE FROM RATED LOADS FOR STOWED JIB, OPTIONAL ATTACHMENTS, HOOKS, AND LOAD-BLOCKS (SEE DEDUCTION CHART). WEIGHTS OF SLINGS AND ALL OTHER LOAD HANDLING DEVICES SHALL BE CONSIDERED A PART OF THE LOAD.
- CRANE LOAD RATINGS WITH OUTRIGGERS ARE BASED ON OUTRIGGERS AND STABILIZERS EXTENDED AND SET WITH MACHINE LEVELED.
- LOAD RATINGS ABOVE THE HEAVY LINE ARE STRUCTURALLY LIMITED CAPACITIES. LOAD RATINGS BELOW THE HEAVY LINE ARE STABILITY LIMITED CAPACITIES AND DO NOT EXCEED 85% OF TIPPING.

DEFINITIONS

- OPERATING RADIUS IS THE HORIZONTAL DISTANCE FROM THE AXIS OF ROTATION TO THE CENTER OF THE VERTICAL HOIST LINE OR TACKLE WITH LOAD APPLIED.
- LOADED BOOM ANGLE AS SHOWN IN THE COLUMN HEADED BY \angle IS THE INCLUDED ANGLE BETWEEN THE HORIZONTAL AND LONGITUDINAL AXES OF THE BOOM BASE AFTER LIFTING RATED LOAD AT RATED RADIUS.

ALLOWABLE LINE PULL

1 PART LINE	2 PART LINE	3 PART LINE	4 PART LINE	5 PART LINE	6 PART LINE
8500 LBS	17000 LBS	25500 LBS	34000 LBS	42500 LBS	44000 LBS
7400 LBS	14800 LBS	22200 LBS	29600 LBS	37000 LBS	44000 LBS

WARNING

ANTI-TWO-BLOCK SYSTEM MUST BE IN GOOD OPERATING CONDITION BEFORE OPERATING CRANE. REFER TO OWNER'S MANUAL.

KEEP AT LEAST 3 WRAPS OF LOAD LINE ON DRUM AT ALL TIMES.

9/16" - 6X25 IWRC (3.5:1 S.F.)
29750 LBS. BREAKING STRENGTH
9/16" ROT RESISTANT (5.0:1 S.F.)
37000 LBS. BREAKING STRENGTH

DEDUCTIONS FROM RATED LOADS FOR LOAD HANDLING DEVICES SUPPLIED BY MANITEX

AUXILIARY BLOCK ----- 50 LBS
OVERHAUL BALL ----- SEE OVERHAUL BALL MFRG NAMEPLATE
LOAD BLOCK ----- SEE BLOCK MFRG NAMEPLATE
HOSE REEL ----- 160 LBS
SWING AROUND JIB ----- SEE LOAD CHART

WARNING

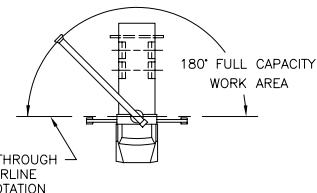
LIFTING OFF THE MAIN BOOM POINT WHILE THE SWING AROUND JIB IS ERECTED IS NOT INTENDED OR APPROVED.

Manitex

MODELS
2262C & 2262T

CRANE MEETS ANSI B30.5 REQUIREMENTS

7300087-002 NR



AREA OF OPERATION

Courtesy of Crane Market