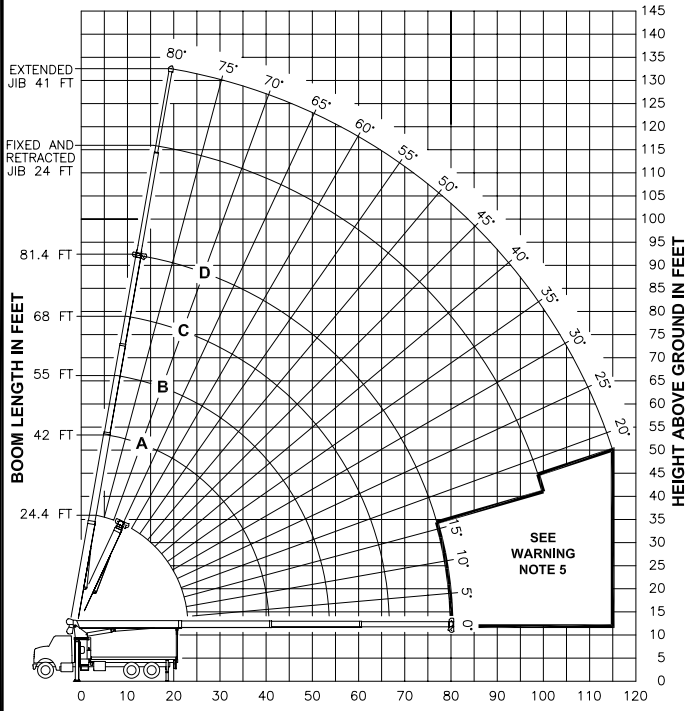


RANGE DIAGRAM



LOAD RATINGS IN LBS WITH OUTRIGGERS AND STABILIZERS EXTENDED

LMI CODE #1		BOOM LENGTH AND BOOM ANGLE				TELESCOPIC JIB				
		BOOM ANGLE				JIB LENGTH				
		24.4 FT	42 FT	55 FT	68 FT	24 FT	24 FT	41 FT	41 FT	
5	78	44000								
8	70	35150								
10	65	29700	76 14500							
12	60	24640	74 14500	78 14500						
14	54	20870	71 14500	76 14500	80 13050					
17	44	16830	66 14500	73 14500	77 11700	80 9200				
20	32	13940	62 14270	70 13430	75 10550	78 8500	20 80	4650	80 4450	
25			54 10990	64 11000	70 9000	75 7550	25 78	4360	78 4160	
30			44 8780	58 8880	66 8120	71 6640	30 76	3900	76 3700	
35			32 7180	51 7290	61 7120	67 5880	35 73	3500	73 3290	
40			13 5620	44 5770	56 5840	63 5260	40 70	3160	70 2940	
45				35 4650	50 4720	59 4700	45 67	2850	67 2640	
50				24 3800	44 3880	55 3930	50 64	2590	64 2370	
55					37 3230	50 3270	55 61	2370	61 2140	
60					28 2700	45 2750	60 58	2170	58 1950	
65					15 2260	39 2320	65 55	2000	55 1770	
70						32 1960	70 51	1840	51 1620	
75						24 1650	75 47	1710	47 1470	
80						3 1380	80 43	1490	43 1260	
85							85 39	1260	39 1030	
90							90 34	1070	34 830	
95							95 27	890	27 650	
100							100 19	730	19 500	
105							105			
110							110			
115							115			
		290 LBS.	170 LBS.	130 LBS.	110 LBS.	90 LBS.	DEDUCTIONS FOR STOWED FIXED JIB			
		440 LBS.	260 LBS.	200 LBS.	160 LBS.	140 LBS.	DEDUCTIONS FOR STOWED TELESCOPIC JIB			

WARNING

- THE OPERATOR MUST READ AND UNDERSTAND THE OWNER'S MANUAL BEFORE OPERATING THIS CRANE.
- POSITIONING OR OPERATION OF CRANE BEYOND AREAS SHOWN ON THIS CHART IS NOT INTENDED OR APPROVED EXCEPT WHERE SPECIFIED IN OWNER'S MANUAL.
- LOADED BOOM ANGLES AT SPECIFIED BOOM LENGTHS GIVE ONLY AN APPROXIMATION OF THE OPERATING RADIUS. THE BOOM ANGLE BEFORE LOADING SHOULD BE GREATER TO ACCOUNT FOR DEFLECTIONS. DO NOT EXCEED THE OPERATING RADIUS FOR RATED LOADS.
- THE OPERATING RADIUS SHOWN IN THE JIB RATING CHART IS FOR FULLY EXTENDED BOOM ONLY. WHEN BOOM IS NOT FULLY EXTENDED, USE ONLY LOADED BOOM ANGLE TO DETERMINE LOAD RATING OF JIB.
- BOOM MUST BE FULLY RETRACTED WHEN JIB IS ERRECTED, BEFORE LOWERING BOOM THROUGH THIS AREA.
- FOR BOOM ANGLES NOT SHOWN ON JIB LOAD RATING CHART, USE RATING OF NEXT LOWER BOOM ANGLE.
- FOR BOOM LENGTHS NOT SHOWN, USE RATING OF NEXT LONGER BOOM LENGTH. FOR RADII NOT SHOWN, USE RATING OF NEXT LONGER RADIUS.
- CRANE LOAD RATINGS ON OUTRIGGERS ARE BASED ON FREELY SUSPENDED LOADS WITH THE MACHINE LEVELLED AND STANDING ON A FIRM UNIFORM SUPPORTING SURFACE. NO ATTEMPT SHALL BE MADE TO MOVE A LOAD HORIZONTALLY ON THE GROUND IN ANY DIRECTION.
- PRACTICAL WORKING LOADS DEPEND ON SUPPORTING SURFACE, WIND, AND OTHER FACTORS AFFECTING STABILITY SUCH AS HAZARDOUS SURROUNDINGS, EXPERIENCE OF PERSONNEL, AND PROPER HANDLING, ALL OF WHICH MUST BE TAKEN INTO ACCOUNT BY THE OPERATOR.
- THE MAXIMUM LOAD WHICH MAY BE TELESCOPED IS LIMITED BY HYDRAULIC PRESSURE, BOOM ANGLE, AND BOOM FABRICATION. IT IS SAFE TO ATTEMPT TO TELESCOPE ANY LOAD WITHIN THE LIMITS OF THE LOAD RATING CHART. BOOM MUST BE FULLY RETRACTED AGAINST BOOM STOPS AT ALL TIMES WHEN LIFTING MINIMUM BOOM LENGTH CAPACITY LOADS.

DEFINITIONS

- DEDUCTIONS MUST BE MADE FROM RATED LOADS FOR STOWED JIB, OPTIONAL ATTACHMENTS, HOOKS, AND LOADBLOCKS (SEE DEDUCTION CHART). WEIGHTS OF SLINGS AND ALL OTHER LOAD HANDLING DEVICES SHALL BE CONSIDERED A PART OF THE LOAD.
- CRANE LOAD RATINGS WITH OUTRIGGERS ARE BASED ON OUTRIGGERS AND STABILIZERS EXTENDED AND SET WITH MACHINE LEVELLED.
- LOAD RATINGS ABOVE THE HEAVY LINE ARE STRUCTURALLY LIMITED CAPACITIES. LOAD RATINGS BELOW THE HEAVY LINE ARE STABILITY LIMITED CAPACITIES AND DO NOT EXCEED 85% OF TIPPING.

DEFINITIONS

- OPERATING RADIUS IS THE HORIZONTAL DISTANCE FROM THE AXIS OF ROTATION TO THE CENTER OF THE VERTICAL HOIST LINE OR TACKLE WITH LOAD APPLIED.
- LOADED BOOM ANGLE AS SHOWN IN THE COLUMN HEADED BY \angle IS THE INCLUDED ANGLE BETWEEN THE HORIZONTAL AND LONGITUDINAL AXES OF THE BOOM BASE AFTER LIFTING RATED LOAD AT RATED RADIUS.

LMI OPERATING CODES

SETTING	CRANE CONFIGURATION	SETTING	CRANE WITH PERSONNEL LIFTING PLATFORM
#1	MAIN BOOM	#5	PERSONNEL LIFTING PLATFORM ON MAIN BOOM
#2	FIXED JIB	#6	PERSONNEL LIFTING PLATFORM ON FIXED JIB
#3	TELE JIB - RETRACTED	#7	PERSONNEL LIFTING PLATFORM ON TELE JIB - RETRACTED
#4	TELE JIB - EXTENDED	#8	PERSONNEL LIFTING PLATFORM ON TELE JIB - EXTENDED

ALLOWABLE LINE PULL

1 PART LINE	2 PART LINE	3 PART LINE	4 PART LINE	5 PART LINE	6 PART LINE
8500 LBS	17000 LBS	25500 LBS	34000 LBS	42500 LBS	44000 LBS
7400 LBS	14800 LBS	22200 LBS	29600 LBS	37000 LBS	44000 LBS

WARNING

ANTI-TWO-BLOCK SYSTEM MUST BE IN GOOD OPERATING CONDITION BEFORE OPERATING CRANE. REFER TO OWNER'S MANUAL.

KEEP AT LEAST 3 WRAPS OF LOAD LINE ON DRUM AT ALL TIMES.

9/16" - 6X25 IWRC (3.5:1 S.F.) 29750 LBS. BREAKING STRENGTH
 9/16" ROT RESISTANT (5.0:1 S.F.) 37000 LBS. BREAKING STRENGTH

DEDUCTIONS FROM RATED LOADS FOR LOAD HANDLING DEVICES SUPPLIED BY MANITEX

AUXILIARY BLOCK	-----	50 LBS
OVERHAUL BALL	-----	SEE OVERHAUL BALL MFRGR. NAMEPLATE
LOAD BLOCK	-----	SEE BLOCK MFRGR. NAMEPLATE
HOSE REEL	-----	160 LBS
SWING AROUND JIB	-----	SEE LOAD CHART

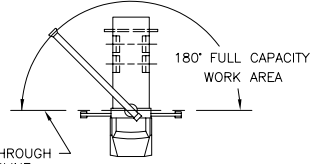
WARNING
 LIFTING OFF THE MAIN BOOM POINT WHILE THE JIB IS ERRECTED IS NOT INTENDED OR APPROVED.



MODELS
 2281C & 2281T

CRANE MEETS ANSI B30.5 REQUIREMENTS

7300087-004 NR



AREA OF OPERATION

Courtesy of CraneMarket