



Maximum lifting height: 29,9 m

Maximum reach: 25,85 m

Engine: Mercedes 150 KW - 204 HP

Electronically controlled hydrostatic transmission

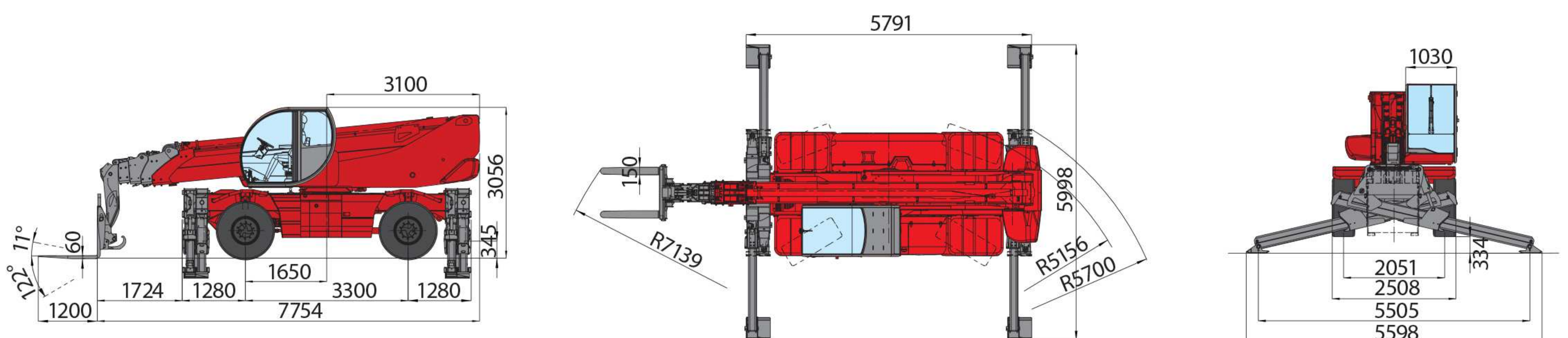
Automatic levelling device

Scissor type stabilizers

**RTH5.30**

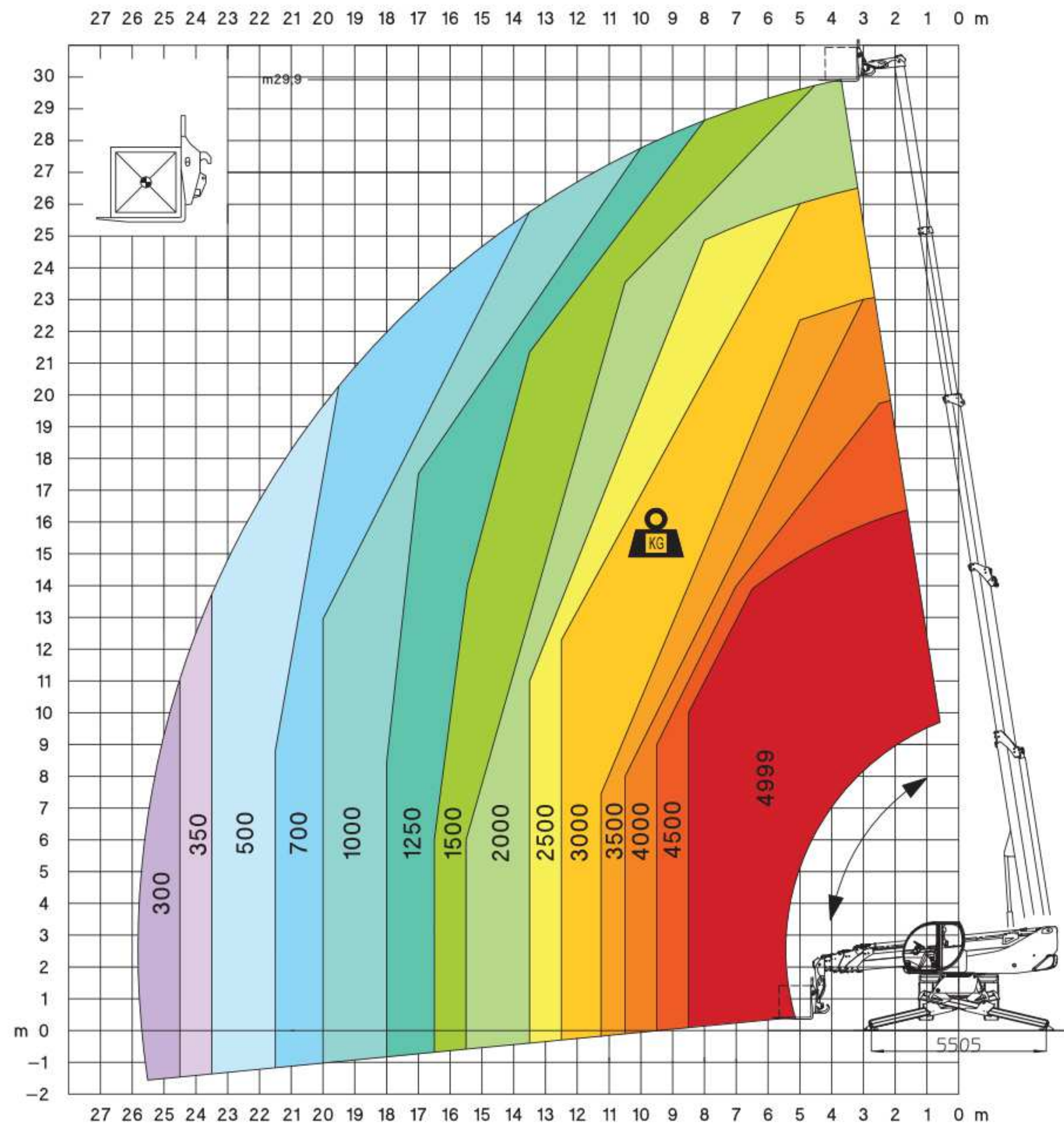


<b>MACHINE MODEL</b>	Rotating telescopic handler	RTH 5.30
	Maximum lifting capacity	4.999 kg (center of gravity 500 mm)
	Maximum lifting height	29,9 m
<b>ENGINE</b>	Type	Mercedes OM 924 LA Euro 4 Interim
	Rated power	150 KW - 204 HP at 2.200 rpm
	Maximum torque	800 Nm at 1.400 rpm
	Displacement	4,8 l
	Cylinders	4 in line
	Fuel	Diesel direct injection turbocharged
	Cooling system	Water – intercooler
<b>TRANSMISSION</b>	Type	Hydrostatic
	Model	Bosch – Rexroth
	Maximum pressure	500 bar
	Displacements	Variable displacement pump (displacement max 110 cc/r) electronically controlled Variable displacement motor (displacement max 115,6 cc/r)
	Gear box	2 speeds (4,06-1,43) forward-reverse
<b>AXLES AND BRAKES</b>	Total ratio	17,5 on each axle
	Rear axle	Oscillating and steering with hydraulic locking
	Front axle	Oscillating and steering with automatic levelling +/- 10°
	Service brake	Hydraulically activated, oil-immersed multi-disc type on each axle
	Parking brake	Hydraulic with negative action
	Tyres dimensions	18 x 22,5
<b>PERFORMANCE</b>	Max. travel speed	40 km/h
	Drawbar pull	97 kN
	Gradeability	41%
	Turning radius (end of forks)	7,14 m
<b>WEIGHTS</b>	Total unladen	19.000 kg
	Front axle unladen (boom retracted and lowered)	9.000 kg
	Rear axle unladen (boom retracted and lowered)	10.000 kg
<b>TANKS CAPACITIES</b>	Fuel tank	200 l
	AdBlue	40 l
	Hydraulic oil tank	210 l
	Engine oil tank	16 l
	Cooling liquid	20 l
<b>HYDRAULIC CIRCUIT</b>	Max. operating system pressure	350 bar
	Circuit type	Load sensing
	Service pump	Bosch Rexroth – Variable displacement (max displacement 58,5 cc/r) – Flow rate 130 l/min
	Controls for boom and turret movements	Sauer Danfoss – Electroproportional valve SIL 2
	Controls for stabilizers	Bosch Rexroth – Electro-hydraulics controls
	Movements control	2 joystick Sauer Danfoss with two shafts with dead man safety device Management with CAN bus technology
<b>DIMENSIONS</b>	Max. length (boom retracted and lowered)	7.754 mm (at vertical point of forks foothold)
	Max. width	2.508 mm (on wheels)
	Max. height (boom retracted and lowered)	3.056 mm (on wheels)
	Wheel base	3.300 mm
	Ground clearance	345 mm
<b>CONFORMTY TO STANDARDS</b>	EN 13849: concerning the safety of all controls of the machine EN 13000: concerning the standard of hydraulic cranes EN 280: concerning the standard of aerial platforms EN 15000: concerning the dynamic stability of the telescopic forklift FOPS/ROPS 97/68/CE: concerning engine emissions standards	

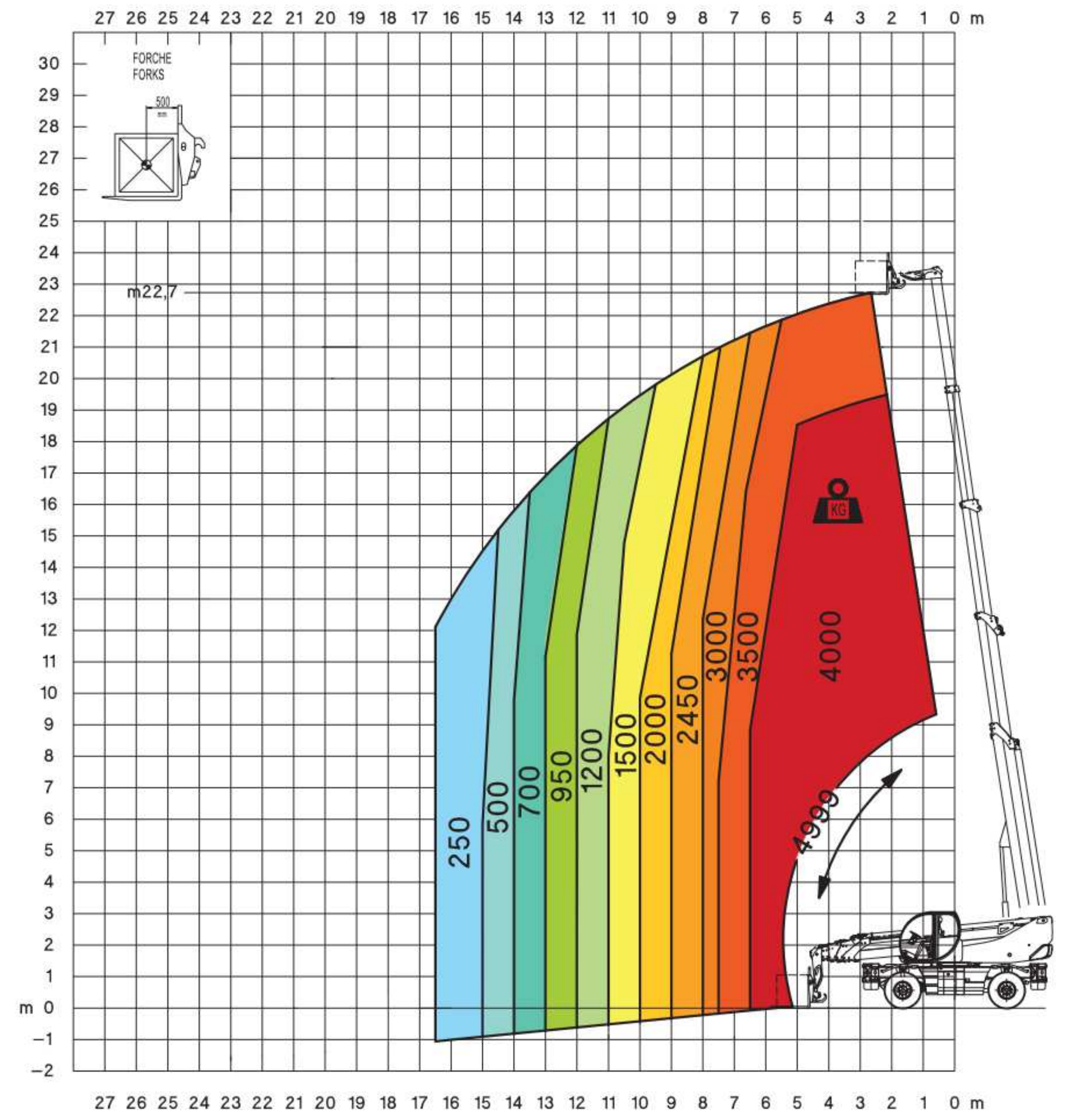




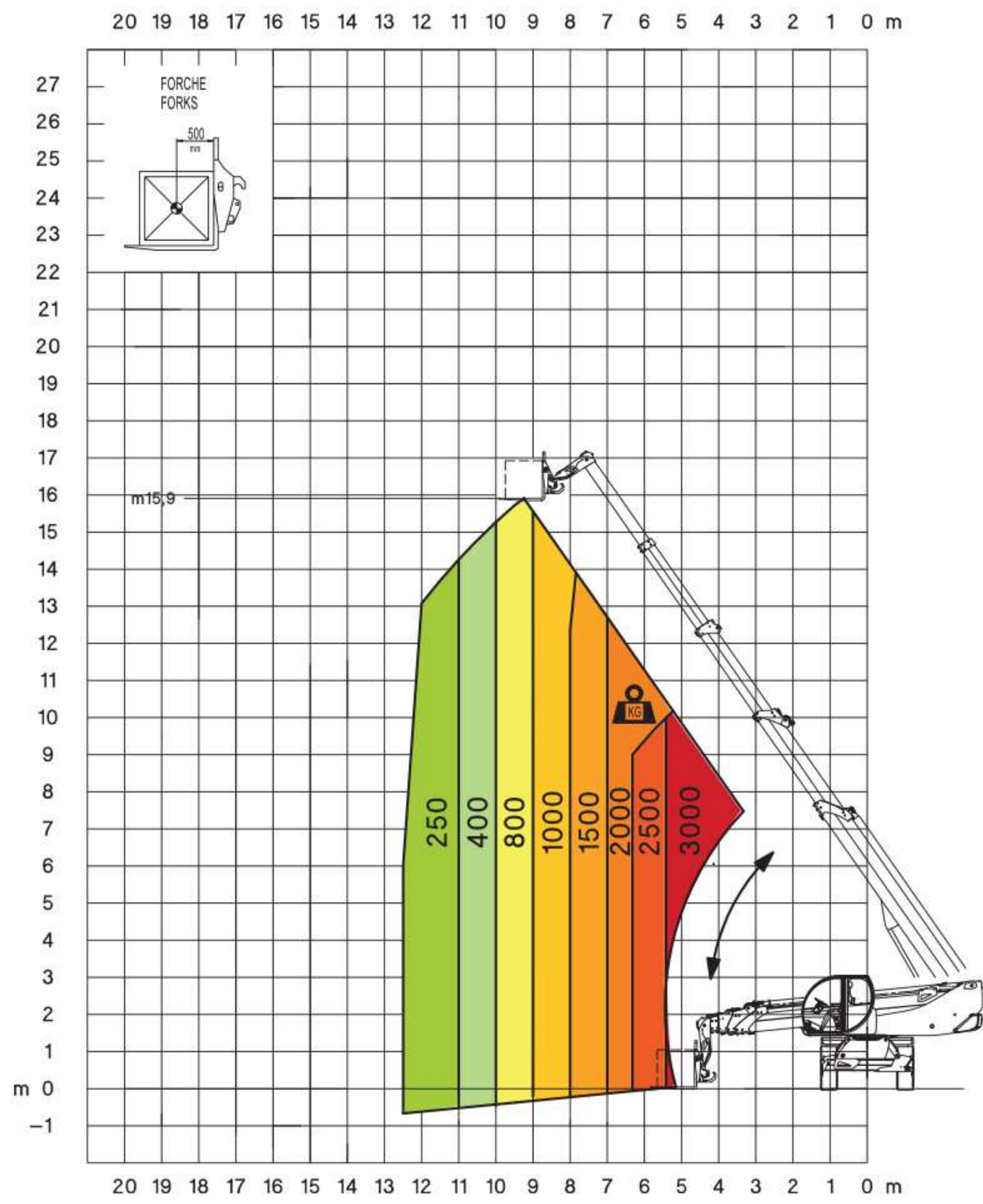
### 360° fully extended stabilizers load chart with forks



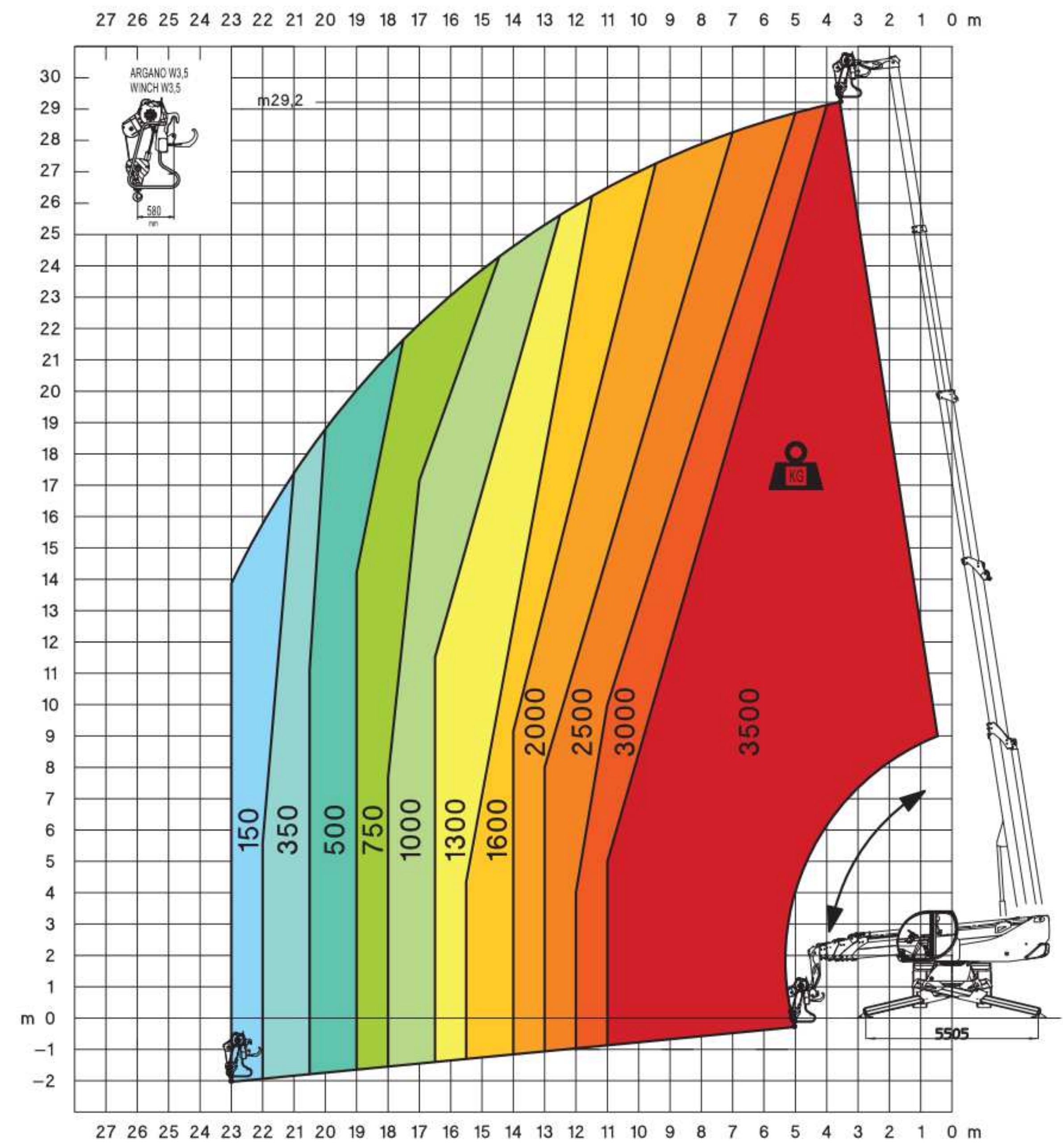
### Frontal position load chart on tyres with forks



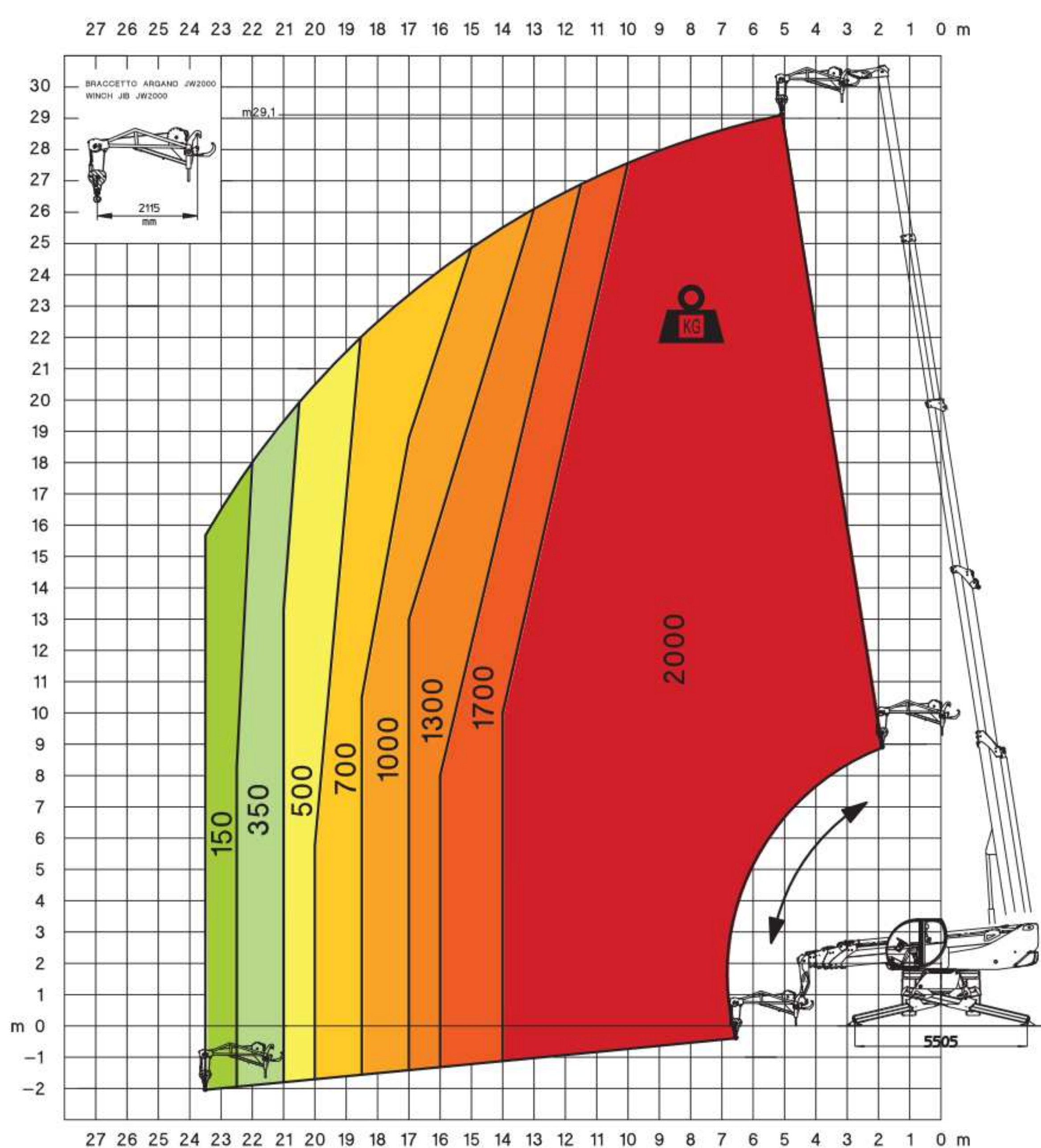
### 360° load chart on tyres with forks



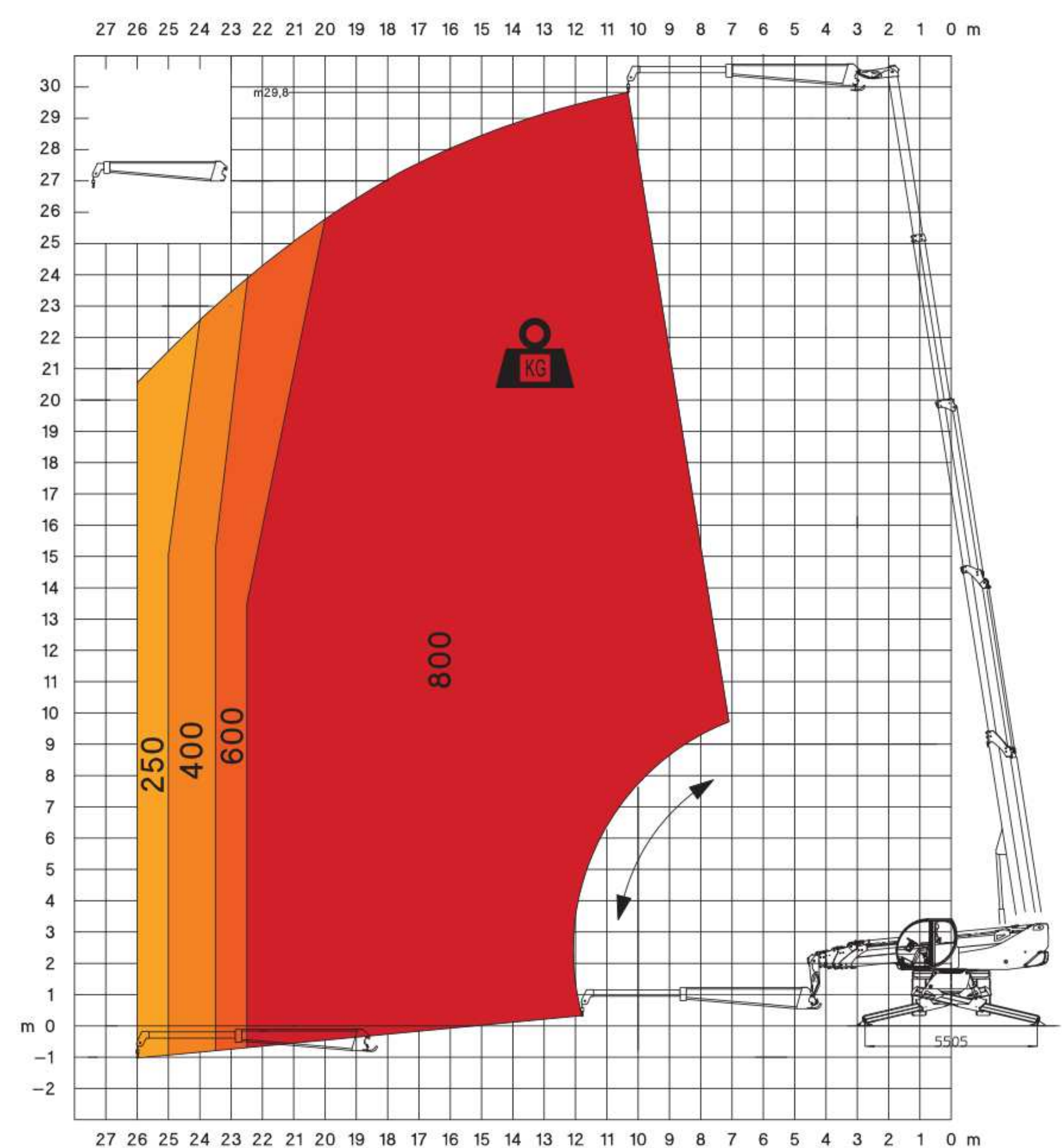
### Winch W 3,5



### Jib with winch JW 2000

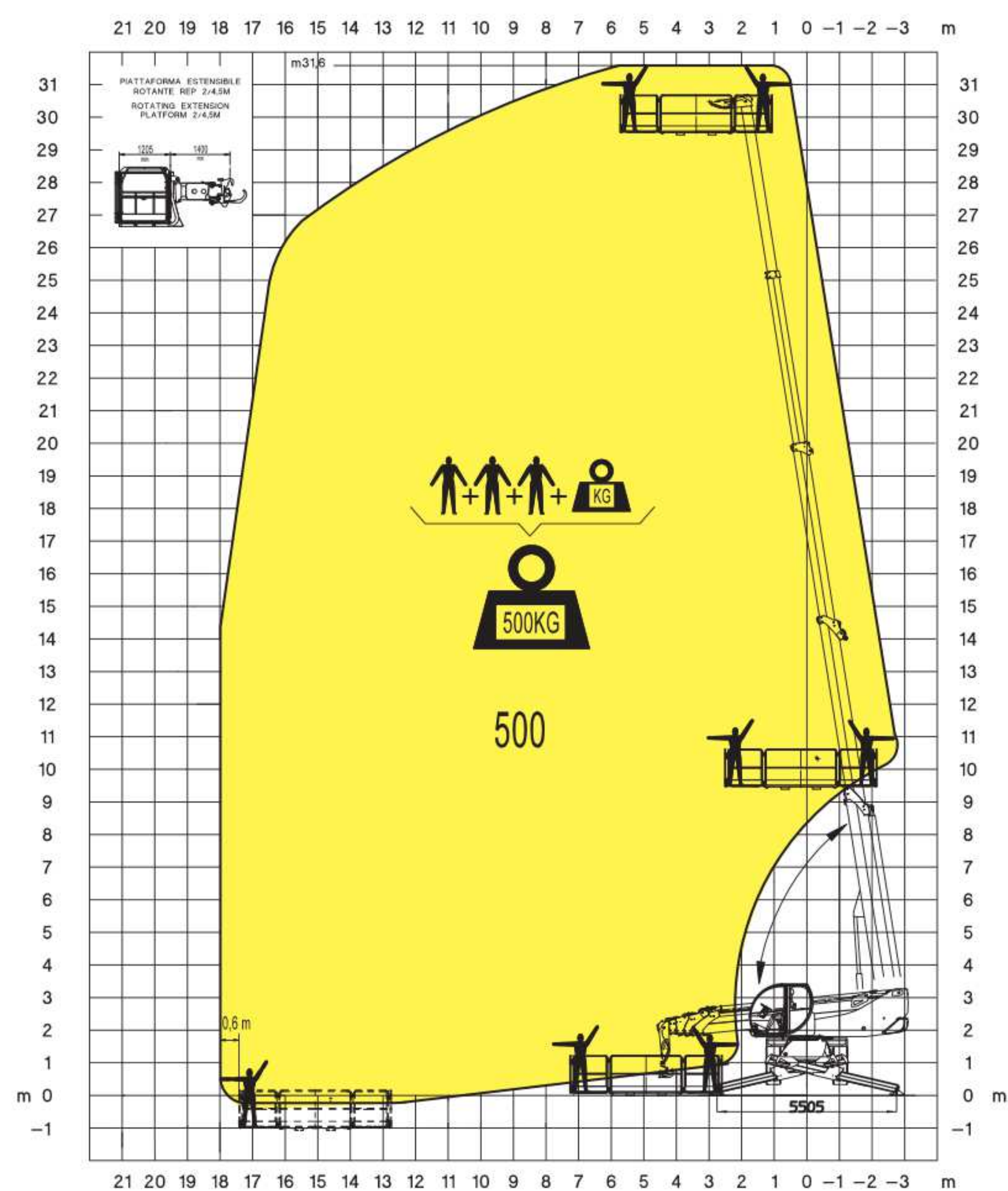


### JW 800

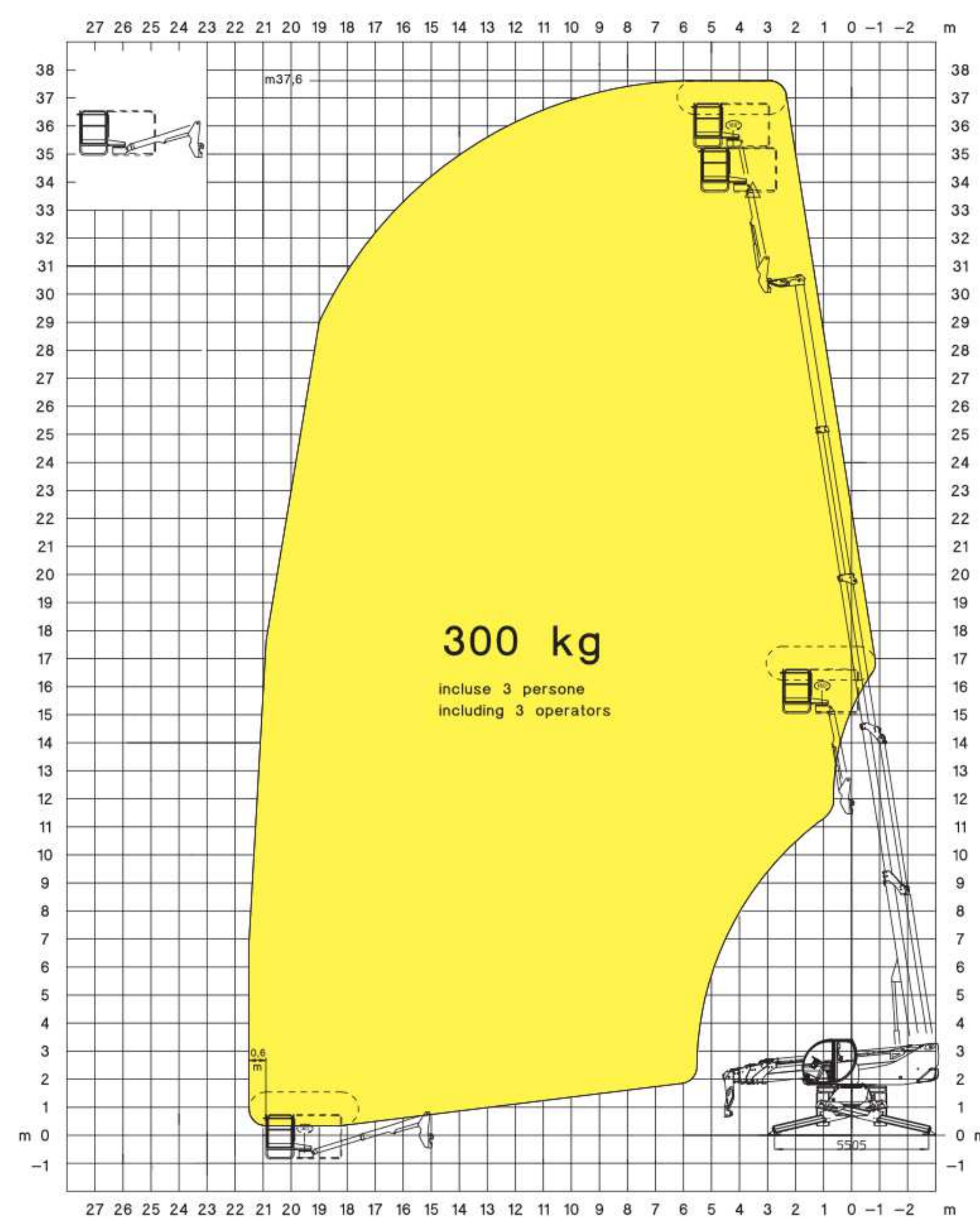




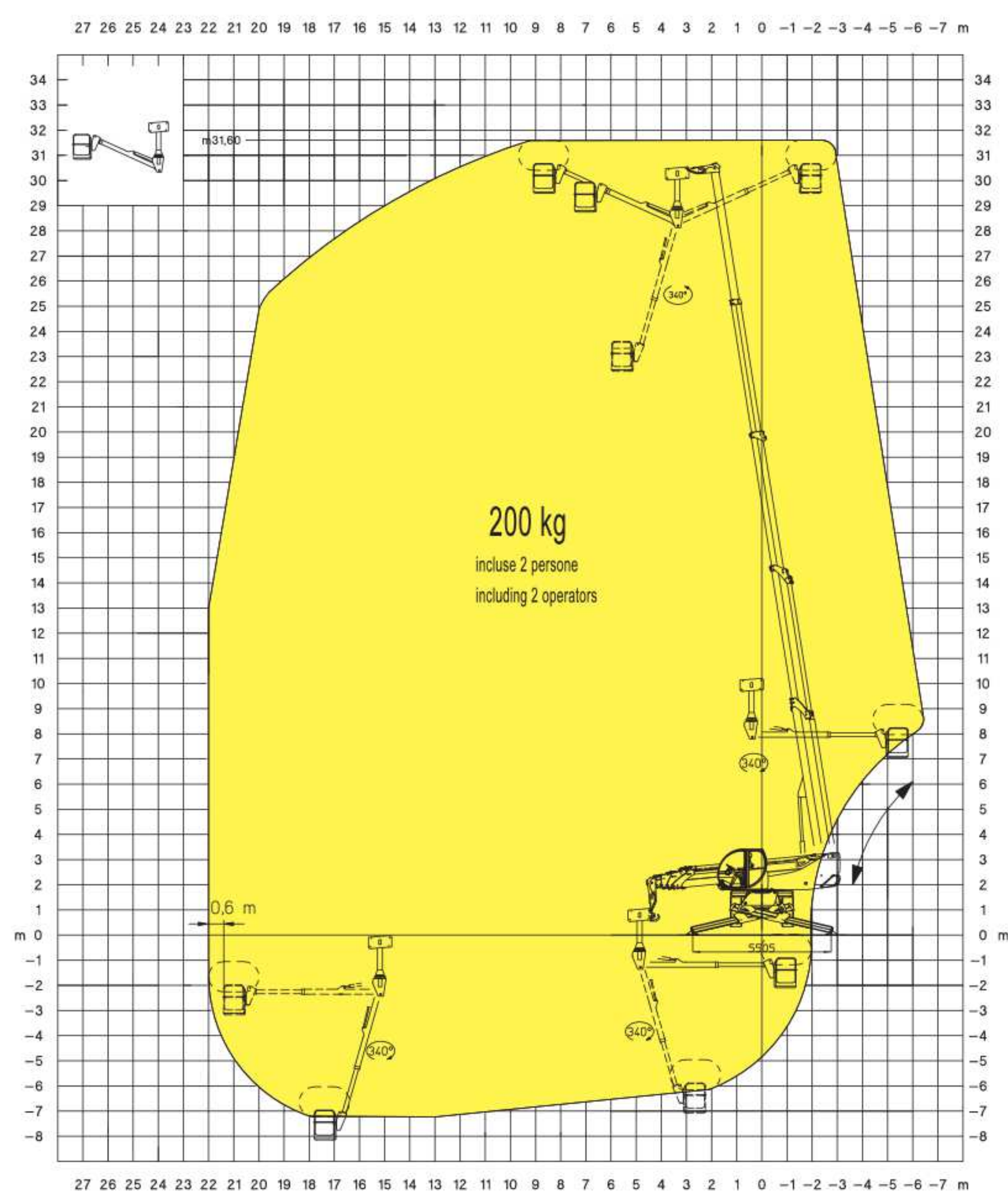
## Extendable rotating platform REP 2/5



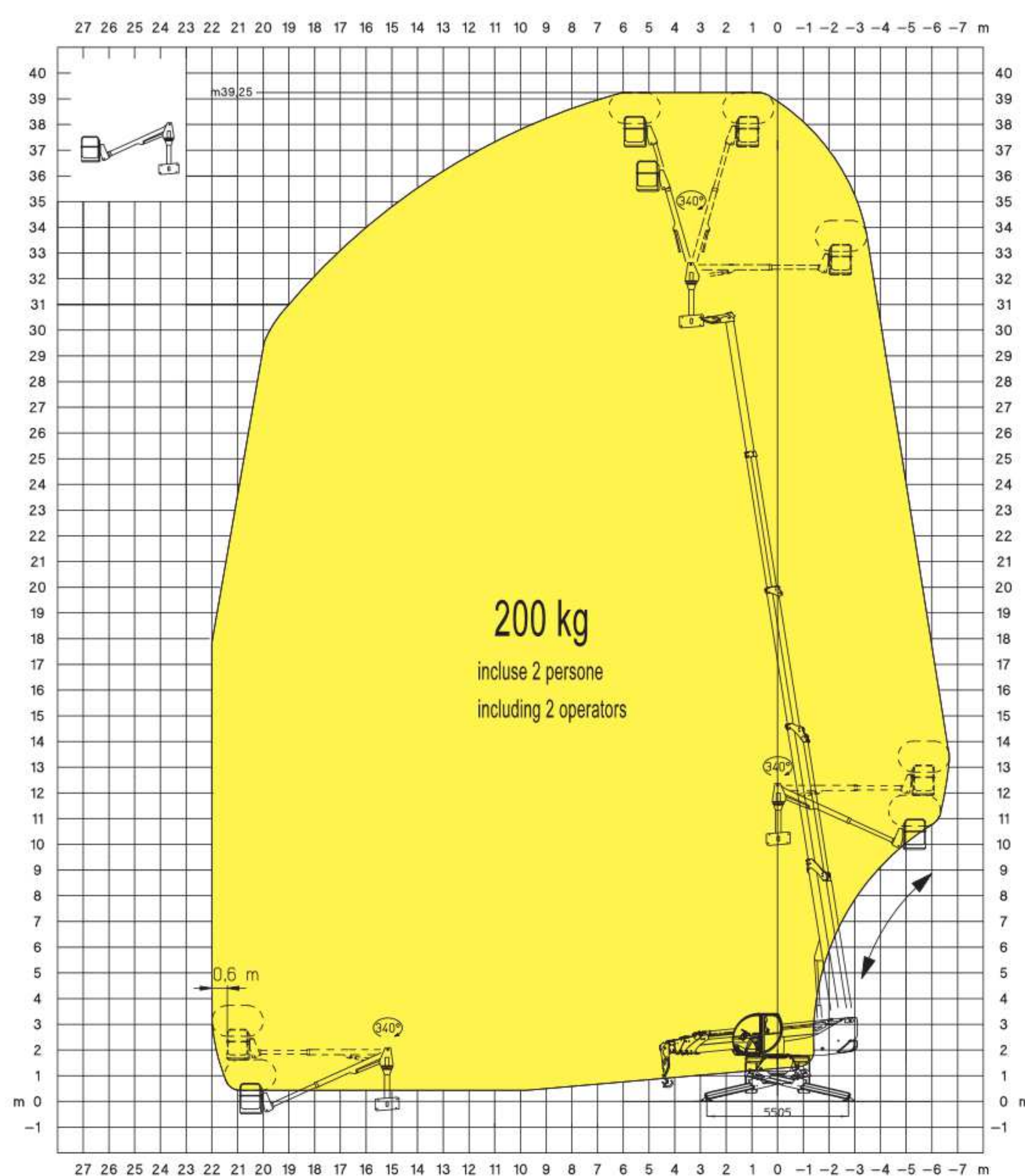
## Telescopic jib platform TP



## Positive-negative telescopic platform TP O-U



## Positive-negative telescopic platform TP O-U



A 3 in 1 machine:

- Telescopic handler
- Hydraulic crane
- Access platform

- (Option) Safety device to prevent unhooking of the attachment (MAGNI patent)
- Attachments automatic recognition system RFID





# Full visibility cab

MAGNI patented design



Pressurized cab  
ISO 10.263

Standard air conditioning  
and heating

Touch screen  
display with joystick  
control system

**EAZI** SALES & SERVICE

Sole Distributor of:

**MAGNI**  
TELESCOPIC HANDLERS

Eazi Sales & Service

Head Office

Tel: +27 87 550 4131

Tel: +27 11 312 7380

Tel Int: +27 86 100 5540

Fax: +27 11 312 7381

Email: [info@eazisales.co.za](mailto:info@eazisales.co.za)

[www.eazisales.co.za](http://www.eazisales.co.za)



From the left:

- Travelling mode screen
- Stabilizers control screen
- Load Moment Indicator screen
- Air conditioning management screen