

MODEL 1044C 54

SPECIFICATIONS

ENGINES:

- JOHN DEERE — 6068D
125 HP @ 2500 RPM
- JOHN DEERE — 4045T 100HP &
115 HP @ 2500 RPM
- CUMMINS — 4BT3.9
110 HP @ 2500 RPM

TRANSMISSION:

- 4-SPEED POWER SHIFT WITH
FWD. & REV.
- COLUMN-MOUNTED SHIFT LEVER
- NEUTRAL START SWITCH
- H.D. TRANSMISSION OIL COOLER
- DECLUTCH SWITCH ALLOWS BRAKE
PEDAL TO DISENGAGE TRANSMISSION
WHEN BRAKE IS APPLIED.

AXLES:

- OUTBOARD PLANETARY WITH
DOUBLE REDUCTION
- 4-WHEEL DRIVE
- LIMITED SLIP FRONT
DIFFERENTIAL
- STEERING — 3 MODES: 4 WHEEL ROUND,
2 WHEEL FRONT, AND 4 WHEEL CRAB
- HYDRAULIC FULL POWER STEERING WITH 2
DOUBLE-ACTING STEER CYLINDERS PER AXLE

BRAKES:

- 4-WHEEL, FULLY ENCLOSED, WET DISC
- HYDRAULIC ACCUMULATOR STORED ENERGY BRAKING
FOR DEAD ENGINE STOPS
- "FAIL-SAFE" PARK BRAKE: SPRING APPLIED
HYDRAULIC RELEASE
- DASH-MOUNTED INDICATOR LIGHTS

ELECTRICAL SYSTEM:

- 12 VOLT, NEGATIVE GROUND
- 925 AMP COLD CRANKING, MAINTENANCE FREE BATTERY
- 65 AMP H.D. ALTERNATOR
- CIRCUIT BREAKER PROTECTED SYSTEM

FILTRATION:

- AIR CLEANER — 2 STAGE DRY TYPE WITH
REPLACEABLE ELEMENTS. (VISUAL SERVICE IND. STD.)
- ENGINE OIL LUBE — FULL FLOW SPIN-ON CARTRIDGE
TYPE WITH BYPASS
- FUEL FILTER WITH WATER SEPARATOR & DRAIN.
- TRANSMISSION — SPIN-ON TYPE WITH SAFETY BYPASS
- MAIN HYDRAULICS — 10 MICRON FULL FLOW FILTER
ELEMENT WITH SAFETY BYPASS

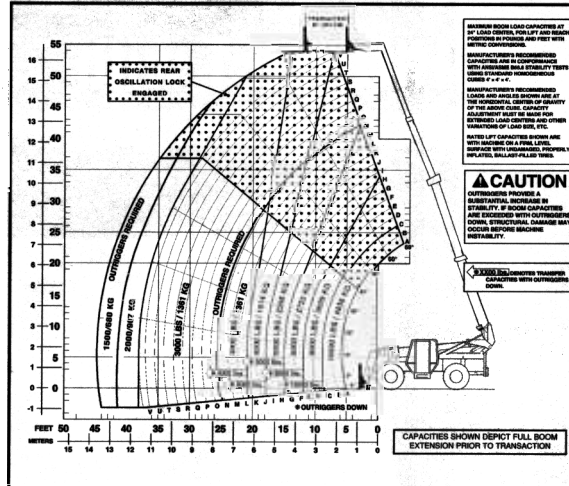
HYDRAULIC SYSTEM:

- 2-SECTION GEAR PUMP: 26 GPM TO MAIN
HYDRAULICS, 18 GPM TO STEERING, BRAKE PRIORITIES
AND HYDRAULIC SYSTEM. EXTRA FINE METERING & SELF
CENTERING HYDRAULIC CONTROL VALVES.

STANDARD EQUIPMENT:

- SEAT BELT
- HORN
- REVERSE WARNING ALARM
- NEUTRAL START SWITCH
- SKID RESISTANT FLOOR MATERIAL
- RIGHT SIDE REAR VIEW MIRROR
- ANTI-FREEZE PROTECTION TO - 30°F
- MACHINE LEVEL INDICATOR

Authorized Representative:



STANDARD EQUIPMENT (cont'd):

- FULL INSTRUMENTATION INCLUDING:
FUEL GAUGE, WATER TEMP. GAUGE,
HOUR METER, OIL PRESSURE GAUGE,
TRANS. OIL TEMP. GAUGE, VOLT
METER, PARK BRAKE APPLIED LIGHT,
LOW BRAKE PRESSURE LIGHT,
TRANS. DECLUTCH LIGHT
- AUTOMATIC FORK LEVELING
- HYD/HYD. JOYSTICK CONTROLS
(PILOT OPERATED)
- 4-SECTION FULLY SYNCHRONIZED
SLIDE BOOM
- FIRST AUXILIARY HYDRAULICS TO
BOOM TIP
- FRAME LEVELING 12-1/2° L & R
- TIE DOWN LUGS
- 14:00 X 24 - 12 PLY TIRES
- QUICK ATTACH
- REAR AXLE STABILIZER SYSTEM
- OPERATOR'S COMPARTMENT ROPS/FOPS
- CONFORMS WITH ANSI/ASME B56.6, 1992
- STABILIZERS

OPTIONAL EQUIPMENT:

- 50.5" FORK CARRIAGE
- 50.5" SIDE TILTING CARRIAGE (10° R-L)
- DUAL FORK POSITIONING CARRIAGES AVAILABLE IN
WIDTHS 50.5" OR 74"
- 74" STANDARD FRAMERS CARRIAGE
- 74" SIDE TILTING FRAMERS CARRIAGE (10° R-L)
- 2" X 4" - 42"/48"/60" FORKS
- 1-3/4" X 6" - 48"/60" LUMBER FORKS
- 2" X 2" CUBING FORKS - ORDER IN PAIRS
- AUXILIARY HYDRAULICS FOR SECOND ACCESSORY
- 1.25 CU YD BUCKET (LIGHT MATERIAL)
- 4,500 LB CAPACITY HYDRAULIC WINCH, BOOM MOUNTED
- CAB ENCLOSURE
- HEATER/DEFROSTER
- AIR CONDITIONING
- 10' TRUSS BOOM (W/WO 2,000 LB CAP.
HYDRAULIC OPERATED WINCH)
- ROADWAY LIGHT PACKAGE
- WORK LIGHT PACKAGES
- 3/4 CU YD HYDRAULIC OPERATED CONCRETE HOPPER
- 8' TOWER, 62' LANDING HEIGHT
- 17.5 X 25 TIRES
- DRY DISC BRAKES

OPERATING SPECIFICATIONS:

LIFT AND CARRY CAPACITY	10,000 LBS
MAX. LIFT HEIGHT	54'
MAX. "LANDING HEIGHT"	54'
TRANSACTION	80"
MAX. HORIZONTAL FORWARD REACH	45'
MAX. REACH @ MAX. LIFT	14'
CAPACITY @ MAX. REACH	1500 LBS
BELOW GRADE	40"
OUTSIDE TURNING RADIUS	13'8"
GROUND CLEARANCE	16"
OVERALL HEIGHT	95"
OVERALL WIDTH	100"
OVERALL LENGTH	24'10" (W/42" Forks)
WHEELBASE	124"
WEIGHT	30,600 LBS

CAPACITIES:

FUEL	40 GAL.
COOLING SYSTEM	18 QTS.
CRANK CASE W/ FILTER	14 QTS.
HYDRAULIC RESERVOIR	44 GAL.
BATTERY	12 VOLT 925 CCA



3045 Highway 13, St. Paul, MN 55121

Lull reserves the right to make improvements in design and changes in specifications without notice and without incurring obligation as to units already sold.

© Copyright 1997 Lull International, Inc. All Rights Reserved 2/97-10M

1044C54-00