

windshield and wind-down windows. The carrier cab has elastic suspension on coil springs and shock absorbers. The seat as well as the mirrors have electrical heating. The position of the steering wheel is adjustable to fit as well as height. Wide range of optionals (air conditioning, radio, refrigerator etc.).

Electrical Equipment

24 V system
 Alternator 1300 W
 2 batteries 12 V 150 Ah
 Windscreen washer
 Halogen headlights
 Stop and tail lights, direction indicators
 Mirrors with heating
 Seat with heating

TRAILER LOKOMO P-140 C

Axles

11 ton axles with parabolic leaf spring suspension. Triflex hubs and wheels.

Frame

Specially designed and fabricated by Lokomo for LOKOTRAILER use. Provision for easy transportation of crane counterweight and a 16 fall hook block.
 A 3 m³ lockable space for tools and accessories.

Brakes

Dual circuit air brake system on all four wheels, with S-cam mechanism. Dauerbremse approved.

Wheels and Tyres

13.00—22.5 steel wheels with 16.5—22.5/20 PR Double X extra wide steel cord radial tyres. Triflex fixing.

Drawbar and Coupling

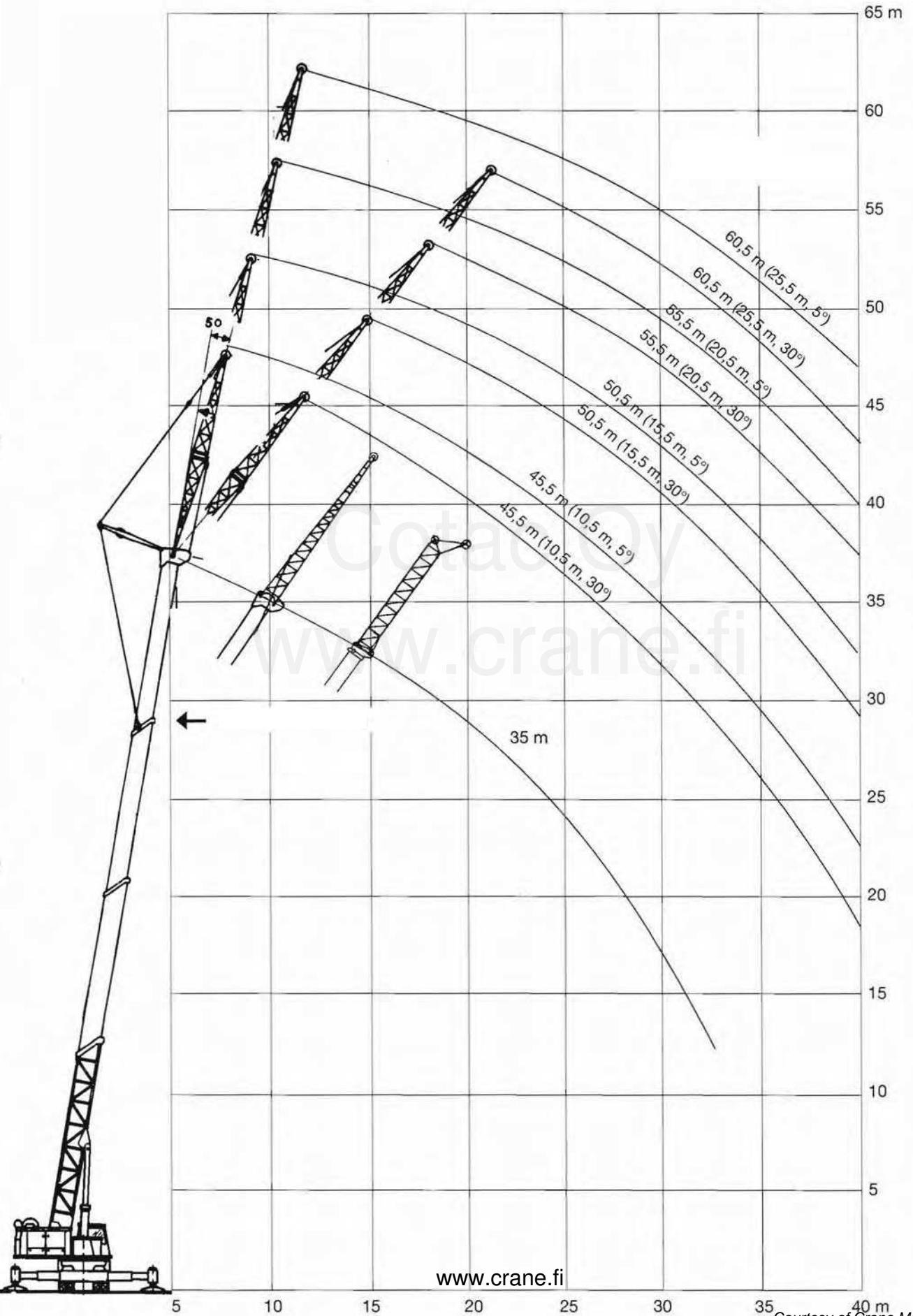
Coupling with ISO 50 mm drawbar lug.

Electrical Equipment

Stop and tail lights, direction indicators.

OPTIONAL EQUIPMENT

- Fly section FE 910 D 10 m
- Lattice fly-jib 10,5—15,5—20,5—25,5 m
- Auxiliary boom head for twin hook operation
- Personnel carrier
- Fifth axle for carrier
- Extra counterweight 5.5 t (totally 11 t)
- Auxiliary hoist
- Gas heaters for extremely cold conditions
- Telma retarder



LOKOMO A 393 NR Load Chart

COTAC Oy

Counterweight 5,5 ton

* Over rear only

Radius m	Length of Boom						
	11	15	19	23	27	31	35
3	95*						
3,5	90	55	49				
4,0	75	53	48	42			
4,5	66	51	46	40,5	32		
5,0	60	48,5	43	38,7	30		
6,0	50	42,5	38	34,9	27	25,5	
7,0	43	37,5	34	31,3	25,5	24	24
8,0	34,5	32,5	30	28	24	21,5	21,5
9,0	26,5	26,5	26,5	25	22	19,6	19,6
10,0		21,5	21	21	19,5	17,7	17,7
12,0		15	14,6	14,6	14,5	14,7	14,7
14,0			10,8	11,2	11,1	11,6	11,6
16,0			8,1	8,5	8,4	8,9	8,4
18,0				6,6	6,5	7,0	7,5
20,0				5,1	5,0	5,4	5,9
22,0					3,7	4,2	4,6
24,0						2,8	3,6
26,0							2,3
28,0							1,6
30,0							

Counterweight 11 ton

* Over rear only

Radius m	Length of Boom						
	11	15	19	23	27	31	35
3	100*						
3,5	90	55	49				
4,0	75	53	48	42			
4,5	66	51	46	40,5	32		
5,0	60	48,5	43	38,7	30		
6,0	50	42,5	38	34,9	27	25,5	
7,0	43	37,5	34	31,3	25,5	24	24
8,0	35	32,5	30	28	24	21,5	21,5
9,0	29	27,5	26,5	25	22	19,6	19,6
10,0		24	23	23	19,5	17,7	17,7
12,0		18,8	18,4	18,4	17,5	14,7	14,7
14,0			13,9	14,3	14,2	12,5	12,5
16,0			10,6	11	10,9	11	11
18,0				8,8	6,7	9,2	9,7
20,0				7	6,9	7,3	7,8
22,0					5,5	6	6,4
24,0						4,3	4,7
26,0							4,7
28,0							3,7
30,0							2,9

Counterweight 5,5 ton rear and 5,5 ton front. Capacity rear 110°

* Over rear only

Radius m	Length of Boom						
	11	15	19	23	27	31	35
3	100*						
3,5	90	55	49				
4,0	75	53	48	42			
4,5	66	51	46	40,5	32		
5,0	60	48,5	43	38,7	30		
6,0	50	42,5	38	34,9	27	25,5	
7,0	43	37,5	34	31,3	25,5	24	24
8,0	35	32,5	30	28	24	21,5	21,5
9,0	29	27,5	26	25	22	19,6	19,6
10,0		24	23	23	19,5	17,7	17,7
12,0		20	20	19	17,5	14,7	14,7
14,0			15,7	15,8	15	12,5	12,5
16,0			12,2	12,5	12,5	11	11
18,0				10,2	10,2	10	10
20,0				8,2	8,2	8,6	9
22,0					6,7	7,1	7,6
24,0						5,5	6
26,0							6,5
28,0							5
30,0							4,1

Extension Jib

Radius m	Ballast	Ballast	Ballast	Angles °
	5,5 ton	11 ton	rear + front	
9	11,5	11,5	11,5	80
10	10,9	10,9	10,9	79
12	9,8	9,8	9,8	76
14	8,8	8,8	8,8	74
16	8,1	8,1	8,1	71
18	7,4	7,4	7,4	68
20	6,7	6,8	6,8	65
22	6,0	6,3	6,3	62
24	5,1	5,8	5,8	59
26	4,3	5,4	5,4	56
28	3,4	4,7	5,0	52
30	2,8	3,9	4,5	49
32	2,3	3,4	4,0	45
34	1,8	2,8	3,4	41
36	1,4	2,4	2,9	37

Fly Jib

Radius m	Ballast	Ballast	Angles °
	5,5 ton	rear + front	
10	14	14	80
12	13	13	79
14	12	12	76
16	10	11	72
18	8,2	10	69
20	6,8	9,2	66
22	6,0	8,3	64
24	5,2	7,5	62
26	4,3	6,5	58
28	3,4	5,4	54
30	2,8	4,6	51
32	2,1	3,9	46
34	1,7	3,4	43
36	1,2	2,8	37

Capacity is over rear only 110 degree when ballast are rear and front fitted