

STINGER 35-100 RS

35 US t Lifting Capacity
Boom Truck Crane

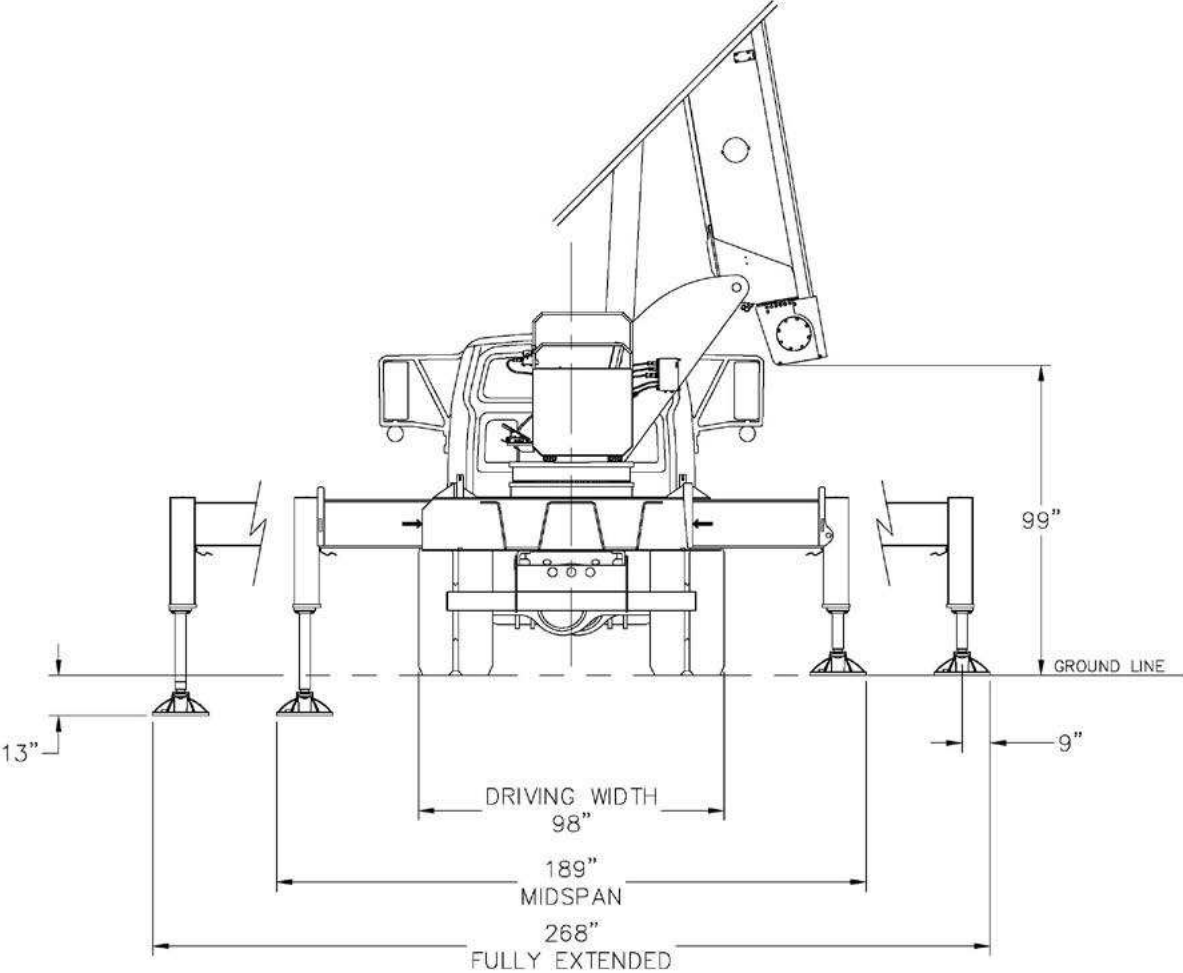
STINGER 35-100 RS



Features: STINGER 35-100

- 35 US t @ 5ft
- 100 ft maximum boom length
- 110 ft maximum tip height
- 30.5-55 ft optional jib
- 165 ft maximum tip height with 55 ft jib
- Electronic rated capacity indicator
- Quick reeving boom head
- Optional operators cab

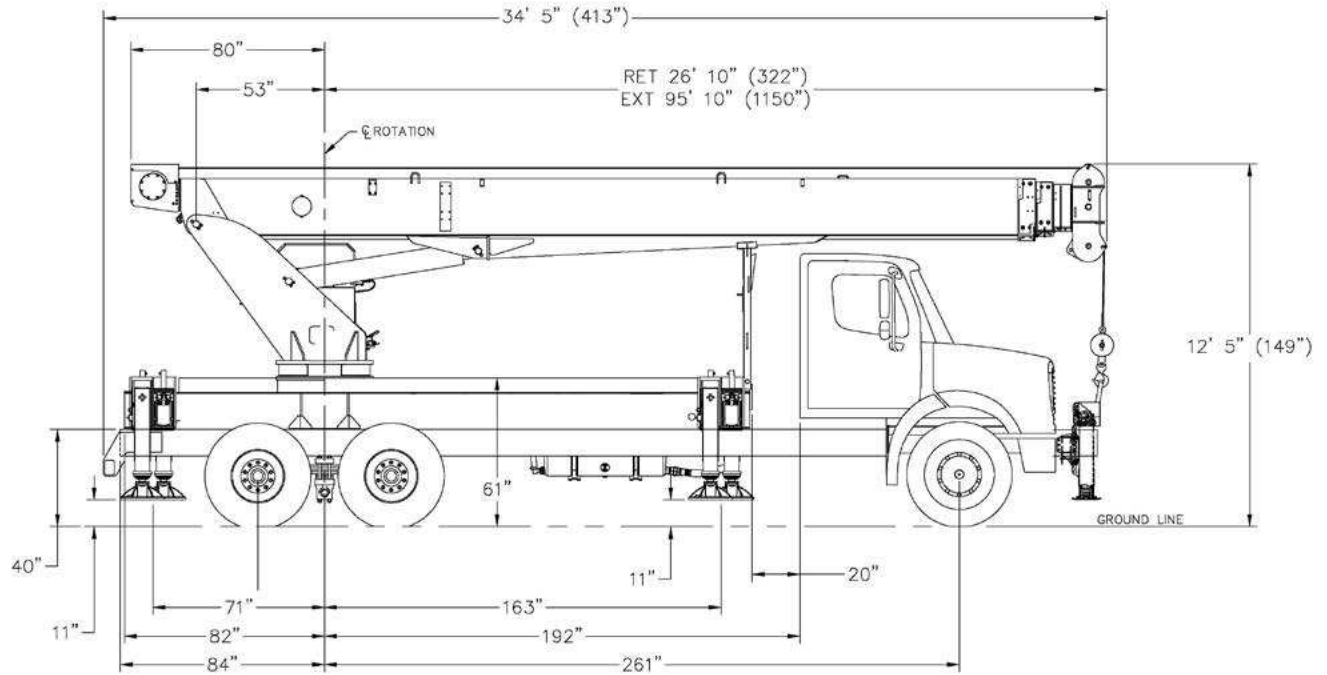
STINGER 35-100 RS



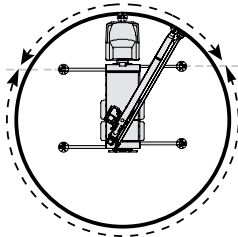
DIMENSIONS

STINGER 35-100 RS

Crane Dimensions



Area of Operation



360° area of operation with single front outrigger

Mounting Specifications

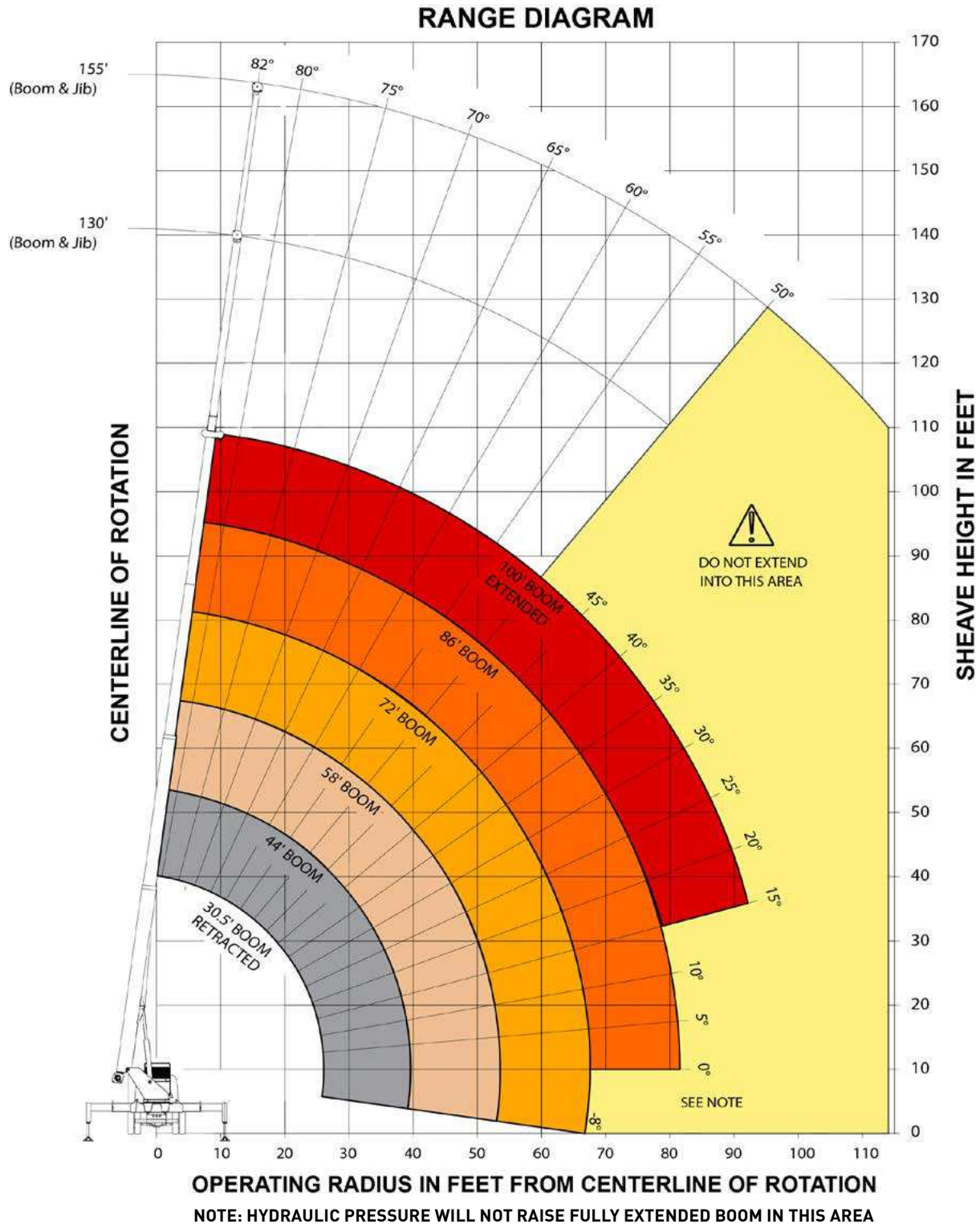
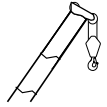
Chassis Recommendation

Gross Vehicle Weight Rating	60,000 lb
Front Axle Weight Rating	20,000 lb
Rear Axle Weight Rating	40,000 lb
Wheelbase	258 +/- 8 in
Crane Weight	29,200 lb
Cab to Axle	190 +/- 8 in
Afterframe	92 +/- 4 in
RBM per Frame Rail	3,300,000 lb/in
Frame Height (Unloaded)	40 in
Section Modulus	30.0 in ³

RANGE DIAGRAM

Outriggers Fully Extended

STINGER 35-100 RS



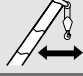
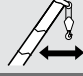
LOAD CHARTS

STINGER 35-100 RS

Outriggers Fully Extended



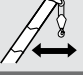
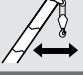
Standard ASME B30.5

	Boom Length						
	30.5	44	58	72	86	100	
ft	lb	lb	lb	lb	lb	lb	ft
5	70,000						5
8	44,900						8
10	39,000	31,700					10
12	34,400	32,200	31,400				12
15	29,100	27,800	26,700	24,200			15
20	22,300	22,000	21,200	19,200	17,000		20
25	14,900	18,000	17,500	16,000	14,400	12,100	25
30		14,800	14,700	13,300	12,000	10,500	30
35		11,600	12,000	11,500	10,300	9,100	35
40			9,200	9,400	9,100	6,500	40
45			7,200	7,400	7,500	5,600	45
50			5,700	5,900	6,000	4,900	50
55				4,700	4,900	4,200	55
60				3,800	3,900	3,600	60
65				3,000	3,200	3,100	65
70					2,500	2,600	70
75					2,000	2,100	75
80					1,500	1,600	80
85						1,200	85
90						900	90
95						600	95

Boom at 0°





Standard ASME B30.5

	Boom Length						
	30.5	44	58	72	86	100	
0	lb	lb	lb	lb	lb	lb	0
0	8,800	5,000	2,900	1,600	700	-	0

With Jib, Retracted and Extended



Standard ASME B30.5

	Jib Capacities for All Boom Lengths								
	80°	78°	75°	70°	65°	60°	55°	50°	
ft	lb	lb	lb	lb	lb	lb	lb	lb	ft
30.5	6,450	6,000	5,300	4,000	3,300	2,300	1,400	800	30.5
55	3,500	3,500	3,500	3,000	2,300	1,700	1,050	700	55

Notes to lifting capacity

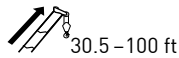
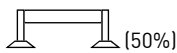
Lifting capacities do not exceed 85% of tipping load. Weight of hook blocks and slings are part of the load, and are to be deducted from the capacity ratings. Consult operation manual for further details.

Note: Data published herein is intended as a guide only and shall not be construed to warrant applicability for lifting purposes. Crane operation is subject to the computer charts and operation manual both supplied with the crane.


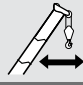
LOAD CHARTS

STINGER 35-100 RS

Outriggers Extended Mid-Position




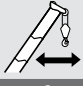
Standard ASME B30.5

	Boom Length						
	30.5	44	58	72	86	100	
ft	lb	lb	lb	lb	lb	lb	ft
5	70,000						5
8	44,900						8
10	39,000	31,700					10
12	34,400	32,200	31,400				12
15	27,200	27,800	26,700	24,200			15
20	14,800	15,500	15,900	16,100	16,300		20
25	8,900	9,900	10,300	10,500	10,600	10,700	25
30		6,800	7,100	7,300	7,400	7,500	30
35		4,600	5,000	5,200	5,300	5,400	35
40			3,600	3,800	3,900	4,000	40
45			2,500	2,700	2,900	2,900	45
50			1,600	1,900	2,000	2,100	50
55				1,300	1,400	1,500	55
60						1,000	60

Boom at 0°





Standard ASME B30.5

	Boom Length						
	30.5	44	58	72	86	100	
0	lb	lb	lb	lb	lb	lb	0
0	7,900	3,100	1,100	-	-	-	0

With Jib, Retracted and Extended



Standard ASME B30.5

	Jib Capacities for All Boom Lengths						
	[VERIFY OPERATIONAL MODE SETTING ON LMI DISPLAY BEFORE LIFTING]						
	80°	78°	75°	70°	65°		
ft	lb	lb	lb	lb	lb	ft	
30.5	6,450	6,000	5,300	3,175	1,650	30.5	
55	3,500	3,500	3,500	2,800	1,275	55	

Notes to lifting capacity

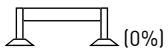
Lifting capacities do not exceed 85% of tipping load. Weight of hook blocks and slings are part of the load, and are to be deducted from the capacity ratings. Consult operation manual for further details.

Note: Data published herein is intended as a guide only and shall not be construed to warrant applicability for lifting purposes. Crane operation is subject to the computer charts and operation manual both supplied with the crane.

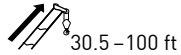
LOAD CHARTS

STINGER 35-100 RS

Outriggers Fully Retracted



(0%)



30.5-100 ft

Standard ASME B30.5

ft	Boom Length						ft
	30.5 lb	44 lb	58 lb	72 lb	86 lb	100 lb	
5	64,700						55
8	26,100						8
10	16,200	17,000					10
12	11,000	11,700	12,100				12
15	6,600	7,300	7,700	7,900			15
20	2,600	3,600	3,900	4,100	4,200		20
25		1,500	1,900	2,100	2,200	2,200	25
30						1,000	30

Notes to lifting capacity

Lifting capacities do not exceed 85% of tipping load. Weight of hook blocks and slings are part of the load, and are to be deducted from the capacity ratings. Consult operation manual for further details.

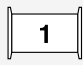
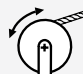
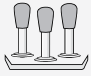
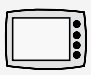

Note: Data published herein is intended as a guide only and shall not be construed to warrant applicability for lifting purposes. Crane operation is subject to the computer charts and operation manual both supplied with the crane.

TECHNICAL DESCRIPTION **STINGER 35-100 RS**

Boom, Jib and Rotation

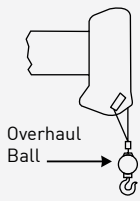
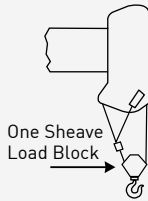
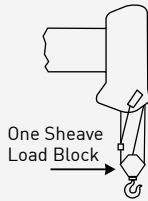
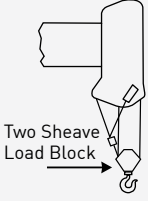
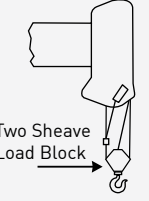
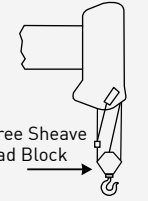

	Full power fully synchronized telescopic keel boom	4 sections
	Boom length	30.5–100 ft
	Boom maximum tip height	110 ft
	Boom elevation angle range (min/max)	-8° / 82°
	Boom up/down time	35/30 sec
	Boom extend/retract time	90/50 sec
	Boom head	Quick reeving
	Maximum tip height: With optional jib 30.5–55 ft	165 ft
	360° continuous rotation	

Operator Controls and Operator Aid

	Hoist line pull (first layer)	15,000 lb
	Hoist line speed (third layer)	196 ft/min
	Fully proportional	
	Electronic rated capacity indicator	
	Oil cooler	

TECHNICAL DESCRIPTION **STINGER 35-100 RS**

Rope and Reeving

1 Part Line	2 Part Line	3 Part Line	4 Part Line	5 Part Line	6 Part Line
					
Loads Up To: 12,971 lbs **9,080 lbs	Loads Up To: 25,942 lbs **18,160 lbs	Loads Up To: 38,913 lbs **27,240 lbs	Loads Up To: 51,884 lbs **36,320 lbs	Loads Up To: 65,855 lbs **45,500 lbs	Loads Up To: 70,000 lbs **54,480 lbs
<p>Hoist Rope 5/8" 6 x 19 or 6 x 37 EEIPS IWRC, preformed right regular lay, min breaking strength 45,400 lbs ** 5/8" rotation resistant 19 x 19 compacted strand, min breaking strength 45,400 lbs</p>					
	Overhaul ball				7 US t
	1 Sheave block				20 US t
	2 Sheave block				30 US t
	4 Sheave block				40 US t

Understructure

	"H" pattern (out and down), To outer edge of pad	268 in
	Single front bumper outrigger	

Optional Features

- Single or two-stage jib
- Rotation resistant rope
- Multi-part load blocks
- Two-man basket
- Hoist drum tensioner
- Tool box
- Enclosed operator's cab with circulation fan only
- Enclosed operator's cab with propane heater (No tank provided)

STINGER 35-100 RS

www.loadkingmfg.com

