



LOAD KING STINGER 50-155

45-80 TON BOOM TRUCK



SPECS

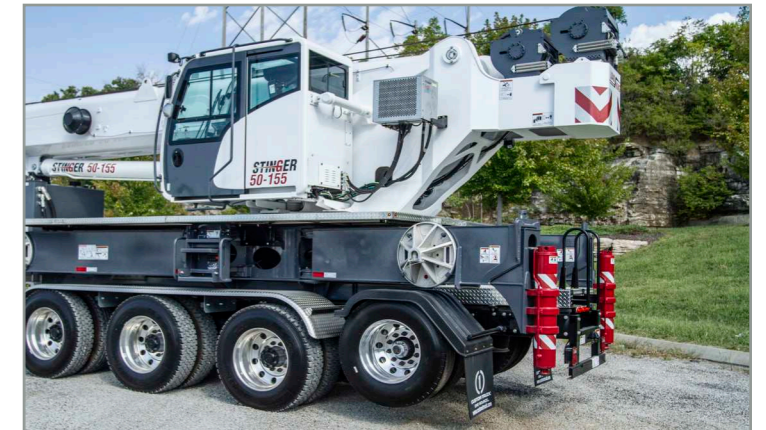
SCPECIFICATIONS:

LIFTING CAPACITY: 50 TONS (100,000 LBS) BOOM LENGTH: 155'

MAX TIP HEIGHT: 165'

BOOM DESIGN: DOUBLE KEEL

JIB: TIP HEIGHT OF 215' WITH TWO-PIECE JIB TILTING OPERATOR'S CAB



888-925-0858
www.customtruck.com

*Custom Truck One Source reserves the right to change the specification of any unit at any time without prior notice. This brochure is only a statement of general specifications on the date of this publication.

ASK ABOUT THE CUSTOMIZED AND FLEXIBLE LEASING & FINANCING SOLUTIONS AVAILABLE FROM CUSTOM TRUCK CAPITAL



Courtesy of CraneMarket.com