

# HC-278H Lattice Boom Lift Crane Capacities

PCSA Class 12-1534  
Refer to notes page 20

**Boom** - Tube; 80" (2.03 m) wide, 68" (1.73 m) deep with open throat top section.

**Jib** - Tube; 32" (.81 m) wide, 24" (.61 m) deep.

**Mounting** - rubber tire mobile base: Link-Belt; 12x6 drive, 288" (6.60 m) wheel-base, 11' 10" (3.61 m) wide.

**Counterweights:**

- "A" Upper - 30,000 lbs. (13 608 kg)
- "AB" Upper - 55,200 lbs. (25 039 kg)
- "ABC" Upper - 76,700 lbs. (34 791 kg)
- "ABCD" Upper - 98,200 lbs. (44 544 kg)
- "A" Bumper - 11,400 lbs. (5 171 kg)
- "AB" Bumper - 26,700 lbs. (12 111 kg)

**Maximum boom or boom + jib machine on outriggers can lift off ground unassisted - without load**

Standard HC-278H must be equipped with the counterweights listed below when the indicated boom or boom + jib lengths are used.	Boom or boom + jib lengths allowed	On Outriggers							
		Over Rear				Over Side			
		Boom		Boom + Jib		Boom		Boom + Jib	
		Feet	meters	Feet	meters	Feet	meters	Feet	meters
Ctwt. 0 + 0	Minimum	60	18.29	n/a	n/a	60	18.29	n/a	n/a
	Maximum	210	64.01	n/a	n/a	190	57.91	n/a	n/a
Ctwt. A + 0	Minimum	60	18.29	n/a	n/a	60	18.29	n/a	n/a
	Maximum	240	73.15	n/a	n/a	230	70.10	n/a	n/a
Ctwt. AB + 0	Minimum	60	18.29	n/a	n/a	60	18.29	n/a	n/a
	Maximum	270	82.30	n/a	n/a	250	76.20	n/a	n/a
Ctwt. ABCD + 0	Minimum	60	18.29	60 + 30	18.29 + 9.14	60	18.29	60 + 30	18.29 + 9.14
	Maximum	310	94.49	270 + 100	82.30 + 30.48	300	91.44	260 + 100	79.25 + 30.48
Ctwt. ABCD + A	Minimum	100	30.48	n/a	n/a	100	30.48	n/a	n/a
	Maximum	320	97.54	n/a	n/a	300	91.44	n/a	n/a
Ctwt. ABCD + AB	Minimum	140	42.67	140 + 30	42.67 + 9.14	140	42.67	140 + 30	42.67 + 9.14
	Maximum	330	100.58	300 + 100	91.44 + 30.48	310	94.49	270 + 100	82.30 + 30.48

**Maximum boom or boom + jib machine on tires can lift off ground unassisted - without load**

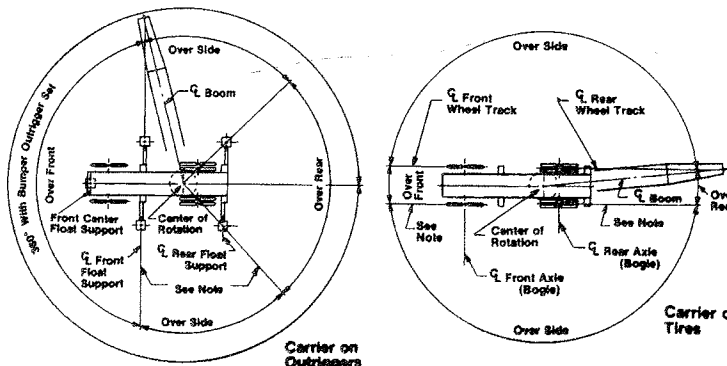
(Refer to Operator's Manual for Travel Restrictions)

Standard HC-278H must be equipped with the counterweights listed below when the indicated boom lengths are used.	Boom lengths allowed	On Outriggers			
		Over Rear			
		Boom		Boom + Jib	
		Feet	meters	Feet	meters
Ctwt. 0 + 0	Minimum	60	18.29	n/a	n/a
	Maximum	110	33.53	n/a	n/a
Ctwt. A + 0	Minimum	60	18.29	n/a	n/a
	Maximum	150	45.72	n/a	n/a
Ctwt. AB + 0	Minimum	60	18.29	n/a	n/a
	Maximum	180	54.86	n/a	n/a
Ctwt. ABCD + 0	Minimum	60	18.29	n/a	n/a
	Maximum	210	64.01	n/a	n/a
Ctwt. ABCD + A	Minimum	100	30.48	n/a	n/a
	Maximum	230	70.10	n/a	n/a
Ctwt. ABCD + AB	Minimum	140	42.67	n/a	n/a
	Maximum	230	70.10	n/a	n/a

## Working Areas

- These lines determine the limiting position of any load for operation within working areas indicated.

**Caution:** This material is for reference only. Operator must refer to in-cab Crane Rating Manual to determine allowable machine lifting capacities and operating procedures.



# HC-278H Lift Crane Capacities - On Outriggers

Boom Length (ft.)	Load Radius (ft.)	Boom Angle (degree)	Capacities - On Outriggers						Capacities - On Outriggers 360 Degree Rotation					
			Over Rear			Over Front			Over Rear			Over Front		
			0 + 0 ctwt.	"A" + 0 ctwt.	"AB" + 0 ctwt.	"ABCD" + 0 ctwt.	"A" ctwt.	"ABCD" + "AB" ctwt.	0 + 0 ctwt.	"A" + 0 ctwt.	"AB" + 0 ctwt.	"ABCD" + 0 ctwt.	"A" ctwt.	"ABCD" + "AB" ctwt.
60' (18.29 m)	10.4	81.5	384,100*	424,100*	441,600*	600,000*	600,000*	384,100*	400,300*	411,600*	445,100*	---	---	
	12.0	80.6	354,900*	391,900*	421,200*	500,000*	500,000*	354,900*	381,700*	392,600*	437,200*	---	---	
	13.0	79.6	329,700*	364,200*	395,800*	437,200*	437,200*	329,700*	364,200*	375,100*	417,900*	---	---	
	14.0	78.6	307,700*	339,900*	369,600*	400,300*	400,300*	307,700*	339,900*	359,300*	400,300*	---	---	
	15.0	77.6	288,500*	318,700*	346,500*	383,900*	383,900*	288,500*	318,700*	344,600*	383,900*	---	---	
	16.0	76.7	271,300*	299,800*	326,200*	367,900*	367,900*	271,300*	299,800*	326,200*	367,900*	---	---	
	17.0	75.7	256,200*	283,100*	307,900*	347,300*	347,300*	256,200*	283,100*	307,900*	347,300*	---	---	
	18.0	74.7	242,400*	268,000*	291,700*	329,100*	329,100*	242,400*	268,000*	291,700*	329,100*	---	---	
	19.0	73.7	230,100*	254,600*	276,900*	312,500*	312,500*	230,100*	254,600*	276,900*	312,500*	---	---	
	20.0	68.4	202,700*	202,700*	249,300*	249,300*	249,300*	202,700*	202,700*	220,700*	249,300*	---	---	
	25.0	63.4	130,100	167,900*	183,000*	206,800*	206,800*	108,600	150,200	183,000*	206,800*	---	---	
	30.0	58.0	99,900	132,400	155,800*	176,400*	176,400*	83,000	93,400	117,000	153,400*	---	---	
	35.0	52.1	80,500	107,300	130,800	153,400*	153,400*	66,800	66,700	84,000	112,500	---	---	
	40.0	38.7	57,200	76,700	94,200	121,200*	121,200*	47,000	64,700	84,000	112,500	---	---	
	50.0	18.7	43,500	59,000	72,800	93,100*	93,100*	35,500	51,000	64,800	87,300	---	---	
	70' (21.34 m)	12.9	82.0	356,700*	366,400*	366,400*	366,400*	366,400*	356,700*	366,400*	366,400*	366,400*	---	---
		13.0	81.9	354,200*	366,400*	366,400*	366,400*	366,400*	354,200*	366,400*	366,400*	366,400*	---	---
		14.0	81.1	329,100*	358,400*	358,400*	358,400*	358,400*	329,100*	358,400*	358,400*	358,400*	---	---
15.0		80.3	307,200*	339,300*	351,700*	351,700*	351,700*	307,200*	339,300*	351,700*	351,700*	---	---	
16.0		79.4	288,000*	318,200*	344,000*	344,000*	344,000*	288,000*	318,200*	344,000*	344,000*	---	---	
17.0		78.6	270,900*	299,500*	325,600*	337,500*	337,500*	270,900*	299,500*	325,600*	337,500*	---	---	
18.0		77.8	255,800*	282,700*	307,400*	329,100*	329,100*	255,800*	282,700*	307,400*	329,100*	---	---	
19.0		76.9	242,100*	267,700*	291,300*	322,900*	322,900*	242,100*	267,700*	291,300*	322,900*	---	---	
20.0		76.1	229,800*	254,200*	276,500*	312,000*	312,000*	229,800*	254,200*	276,500*	312,000*	---	---	
25.0		71.8	183,000*	202,400*	220,500*	249,000*	249,000*	154,600	202,400*	220,500*	249,000*	---	---	
30.0		67.5	130,600	167,700*	182,800*	206,600*	206,600*	109,100	150,600	182,800*	206,600*	---	---	
35.0		63.0	100,300	132,800	155,600*	176,200*	176,200*	83,400	115,900	144,800	176,200*	---	---	
40.0		58.3	80,800	107,600	131,100	153,200*	153,200*	67,100	93,700	117,300	153,200*	---	---	
50.0		48.0	57,400	77,000	94,400	120,900*	120,900*	47,300	66,900	84,200	112,600	---	---	
60.0		35.7	43,700	59,300	73,100	95,500	95,500	35,800	51,200	65,000	87,500	---	---	
70.0		17.3	34,800	47,600	59,000	77,500*	77,500*	28,100	40,900	52,300	71,000	---	---	
80' (24.38 m)		14.3	82.0	321,400*	331,700*	331,700*	331,700*	331,700*	321,400*	331,700*	331,700*	331,700*	---	---
		15.0	81.5	306,400*	327,600*	327,600*	327,600*	327,600*	306,400*	327,600*	327,600*	327,600*	---	---
	16.0	80.8	287,400*	317,500*	321,400*	321,400*	321,400*	287,400*	317,500*	321,400*	321,400*	---	---	
	17.0	80.0	270,300*	298,900*	314,400*	314,400*	314,400*	270,300*	298,900*	314,400*	314,400*	---	---	
	18.0	79.3	255,300*	282,200*	306,800*	308,500*	308,500*	255,300*	282,200*	306,800*	308,500*	---	---	
	19.0	78.6	241,700*	267,100*	290,700*	302,700*	302,700*	241,700*	267,100*	290,700*	302,700*	---	---	
	20.0	77.9	229,400*	253,800*	276,000*	295,100*	295,100*	229,400*	253,800*	276,000*	295,100*	---	---	
	25.0	74.2	182,600*	202,100*	220,100*	248,500*	248,500*	155,100	202,100*	220,100*	248,500*	---	---	
	30.0	70.4	130,900	167,400*	182,500*	206,200*	206,200*	109,400	150,900	182,500*	206,200*	---	---	
	35.0	66.6	100,500	133,000	155,300*	175,900*	175,900*	83,600	116,100	145,000	175,900*	---	---	
	40.0	62.6	80,900	107,700	131,200	152,400*	152,400*	67,300	93,900	117,400	152,400*	---	---	
	50.0	54.2	57,500	77,000	94,400	117,400*	117,400*	47,300	67,000	84,300	112,600	---	---	
	60.0	44.7	43,800	59,300	73,100	94,500*	94,500*	35,900	51,300	65,100	87,500	---	---	
	70.0	33.3	34,900	47,600	59,000	77,300*	77,300*	28,300	41,000	52,400	71,000	---	---	
	80.0	16.2	28,500	39,400	49,100	63,900*	63,900*	22,800	33,800	43,400	59,300	---	---	

# HC-278H Lift Crane Capacities - On Outriggers

Boom Length (ft.)	Load Radius (ft.)	Boom Angle (degree)	Capacities - On Outriggers Over Rear						Capacities - On Outriggers 360 Degree Rotation					
			0 + 0	"A" + 0	"AB" + 0	"ABCD" + 0	"A" ctwt.	"ABCD" + "AB" ctwt.	0 + 0	"A" + 0	"AB" + 0	"ABCD" + 0	"A" ctwt.	"ABCD" + "AB" ctwt.
			ctwt.	ctwt.	ctwt.	ctwt.			ctwt.	ctwt.	ctwt.	ctwt.	ctwt.	ctwt.
90' (27.43 m)	15.7	82.0	293,800*	316,400*	316,400*	316,400*	--	--	293,800*	316,400*	316,400*	316,400*	--	--
	16.0	81.8	288,100*	315,400*	315,400*	315,400*	--	--	288,100*	315,400*	315,400*	315,400*	--	--
	17.0	81.2	271,100*	310,500*	310,500*	310,500*	--	--	271,100*	299,300*	310,500*	310,500*	--	--
	18.0	80.5	256,100*	305,600*	305,600*	305,600*	--	--	256,000*	282,800*	305,600*	305,600*	--	--
	19.0	79.9	242,400*	291,200*	291,200*	300,800*	--	--	242,400*	267,700*	291,200*	300,800*	--	--
	20.0	79.2	230,000*	276,500*	276,500*	293,300*	--	--	230,000*	254,400*	276,500*	293,300*	--	--
	25.0	76.0	183,200*	202,600*	220,600*	249,000*	--	--	157,200	202,600*	220,600*	249,000*	--	--
	30.0	72.7	132,300	167,800*	182,900*	206,600*	--	--	110,900	152,400	182,900*	206,600*	--	--
	35.0	69.3	101,600	134,000	155,700*	176,200*	--	--	84,700	117,200	146,100	176,200*	--	--
	40.0	65.8	81,800	108,600	132,000	153,200*	--	--	68,200	94,700	118,200	153,200*	--	--
100' (30.48 m)	50.0	58.6	58,100	77,600	95,000	121,000*	--	--	47,900	67,600	84,800	113,200	--	--
	60.0	50.8	44,200	59,800	73,500	95,900	--	--	36,300	51,700	65,500	87,900	--	--
	70.0	42.0	35,200	48,000	59,300	77,800	--	--	28,600	41,300	52,700	71,300	--	--
	80.0	31.4	28,800	39,600	49,300	65,200	--	--	23,100	34,100	43,700	59,600	--	--
	90.0	15.2	23,900	33,400	41,800	55,700	--	--	18,900	28,500	37,000	50,700	--	--
	17.1	82.0	268,900*	289,600*	289,600*	289,600*	289,600*	289,600*	268,900*	289,600*	289,600*	289,600*	289,600*	289,600*
	18.0	81.5	255,400*	282,000*	285,100*	285,100*	285,100*	285,100*	255,300*	282,000*	285,100*	285,100*	285,100*	285,100*
	19.0	80.9	241,700*	267,000*	281,500*	281,500*	281,500*	281,500*	241,700*	267,000*	281,500*	281,500*	281,500*	281,500*
	20.0	80.3	229,400*	253,700*	275,800*	277,100*	277,100*	277,100*	229,400*	253,700*	275,800*	277,100*	277,100*	277,100*
	25.0	77.4	182,700*	202,100*	220,000*	248,300*	248,300*	248,300*	157,500	202,100*	220,000*	248,300*	248,300*	248,300*
30.0	74.4	132,400	167,400*	182,400*	206,100*	206,100*	206,100*	111,100	152,500	182,400*	206,100*	206,100*	206,100*	
35.0	71.4	101,600	134,100	155,200*	175,800*	175,800*	175,800*	84,800	117,200	146,100	175,800*	175,800*	175,800*	
40.0	68.4	81,800	108,500	132,000	152,700*	152,700*	152,700*	68,200	94,700	118,200	152,800*	152,800*	152,800*	
50.0	62.1	58,000	77,500	94,900	120,600*	120,600*	120,600*	47,900	67,600	84,800	113,100	113,100	113,100	
60.0	55.4	44,100	59,700	73,400	95,800	95,800	95,800	36,300	51,600	65,400	87,700	87,700	87,700	
70.0	48.1	35,200	47,800	59,200	77,700	77,700	77,700	28,500	41,200	52,600	71,200	71,200	71,200	
80.0	39.8	28,700	39,500	49,200	65,100	65,100	65,100	23,000	34,000	43,500	59,400	59,400	59,400	
90.0	29.7	23,900	33,400	41,800	55,600	55,600	55,600	18,900	28,500	37,000	50,700	50,700	50,700	
100.0	14.5	20,100	28,500	36,000	48,200	48,200	48,200	15,700	24,200	31,700	43,900	43,900	43,900	
110' (33.53 m)	18.5	82.0	247,900*	267,600*	267,600*	267,600*	267,600*	267,600*	247,900*	267,600*	267,600*	267,600*	267,600*	267,600*
	19.0	81.7	241,000*	265,100*	265,100*	265,100*	265,100*	241,000*	265,100*	265,100*	265,100*	265,100*	265,100*	265,100*
	20.0	81.2	228,700*	252,900*	261,800*	261,800*	261,800*	261,800*	228,700*	252,900*	261,800*	261,800*	261,800*	261,800*
	25.0	78.6	182,200*	201,500*	219,400*	243,000*	243,000*	243,000*	157,700	201,500*	219,400*	243,000*	243,000*	243,000*
	30.0	75.9	132,500	166,900*	181,900*	205,500*	205,500*	205,500*	111,100	152,500	181,900*	205,500*	205,500*	205,500*
	35.0	73.2	101,600	134,000	154,700*	175,300*	175,300*	175,300*	84,800	117,200	146,100	175,300*	175,300*	175,300*
	40.0	70.4	81,700	108,500	131,900	152,300*	152,300*	152,300*	68,100	94,600	118,100	152,300*	152,300*	152,300*
	50.0	64.8	57,900	77,400	94,800	120,200*	120,200*	120,200*	47,800	67,400	84,600	112,900	112,900	112,900
	60.0	58.9	43,900	59,500	73,300	95,600	95,600	95,600	36,100	51,500	65,200	87,600	87,600	87,600
	70.0	52.6	35,000	47,700	59,100	77,500	77,500	77,500	28,400	41,000	52,400	71,100	71,100	71,100
80.0	45.7	28,600	39,300	49,000	64,900	64,900	64,900	22,900	33,900	43,400	59,300	59,300	59,300	
90.0	37.9	23,700	33,300	41,600	55,400	55,400	55,400	18,800	28,400	36,800	50,500	50,500	50,500	
100.0	28.3	20,000	28,500	36,000	48,100	48,100	48,100	15,600	24,100	31,600	43,700	43,700	43,700	
110.0	13.8	17,000	24,600	31,300	42,200	42,200	42,200	13,000	20,600	27,400	38,300	38,300	38,300	

# HC-278H Lift Crane Capacities - On Outriggers

Boom Length (ft.)	Load Radius (ft.)	Boom Angle (degree)	Capacities - On Outriggers Over Rear						Capacities - On Outriggers 360 Degree Rotation						
			0 + 0	"A" + 0	"AB" + 0	"ABCD" + 0	"A" ctwt.	"ABCD" + "AB" ctwt.	0 + 0	"A" + 0	"AB" + 0	"ABCD" + 0	"A" ctwt.	"ABCD" + "AB" ctwt.	
			ctwt.	ctwt.	ctwt.	ctwt.			ctwt.	ctwt.	ctwt.	ctwt.	ctwt.	ctwt.	
120' (36.58 m)	19.9	82.0	229,500*	245,100*	245,100*	245,100*	245,100*	229,500*	245,100*	245,100*	245,100*	245,100*	245,100*	245,100*	N/A
	20.0	81.9	228,000*	245,100*	245,100*	245,100*	245,100*	228,000*	245,100*	245,100*	245,100*	245,100*	245,100*	245,100*	
	25.0	79.5	181,600*	200,800*	218,800*	229,800*	229,800*	157,800	200,800*	218,800*	229,800*	229,800*	229,800*	229,800*	
	30.0	77.1	132,500*	166,300*	181,300*	204,900*	204,900*	111,200	152,500	181,300*	204,900*	204,900*	204,900*	204,900*	
	35.0	74.6	101,600	133,900	154,200*	174,700*	174,700*	84,700	117,100	146,000	174,700*	174,700*	174,700*	174,700*	
	40.0	72.1	81,600	108,300	131,800	151,800*	151,800*	68,000	94,500	117,900	151,800*	151,800*	151,800*	151,800*	
	50.0	67.0	57,800	77,200	94,600	119,700*	119,700*	47,600	67,300	84,400	112,700	112,700	112,700	112,700	
	60.0	61.7	43,800	59,300	73,100	95,400	95,400	36,000	51,300	65,100	87,300	87,300	87,300	87,300	
	70.0	56.2	34,800	47,500	58,800	77,200	77,200	28,200	40,800	52,200	70,900	70,900	70,900	70,900	
	80.0	50.2	28,400	39,100	48,800	64,700	64,700	22,700	33,700	43,100	59,000	59,000	59,000	59,000	
	90.0	43.6	23,500	33,100	41,300	55,200	55,200	18,600	28,200	36,600	50,300	50,300	50,300	50,300	
	100.0	36.2	19,800	28,300	35,800	47,900	47,900	15,400	23,900	31,400	43,500	43,500	43,500	43,500	
110.0	27.1	16,800	24,400	31,100	42,000	42,000	12,900	20,500	27,200	38,100	38,100	38,100	38,100		
120.0	13.2	14,300	21,200	27,300	37,300	37,300	10,800	17,700	23,800	33,800	33,800	33,800	33,800		
130' (39.62 m)	21.3	82.0	213,700*	227,100*	227,100*	227,100*	227,100*	213,700*	227,100*	227,100*	227,100*	227,100*	227,100*	227,100*	N/A
	25.0	80.3	181,000*	200,200*	215,000*	215,000*	215,000*	157,900	200,200*	215,000*	215,000*	215,000*	215,000*	215,000*	
	30.0	78.1	132,500	165,800*	180,800*	203,600*	203,600*	111,200	152,400	180,700*	203,600*	203,600*	203,600*	203,600*	
	35.0	75.8	101,500	133,800	153,700*	174,100*	174,100*	84,600	117,000	145,900	174,100*	174,100*	174,100*	174,100*	
	40.0	73.5	81,400	108,200	131,600	151,200*	151,200*	67,900	94,400	117,800	151,200*	151,200*	151,200*	151,200*	
	50.0	68.9	57,600	77,000	94,400	119,200*	119,200*	47,400	67,100	84,200	112,400	112,400	112,400	112,400	
	60.0	64.1	43,500	59,100	72,900	95,100	95,100	35,800	51,100	64,800	87,100	87,100	87,100	87,100	
	70.0	59.1	34,600	47,200	58,600	77,000	77,000	28,000	40,600	52,000	70,600	70,600	70,600	70,600	
	80.0	53.8	28,100	38,800	48,600	64,400	64,400	22,500	33,400	42,900	58,800	58,800	58,800	58,800	
	90.0	48.1	23,300	32,900	41,100	54,900	54,900	18,400	27,900	36,400	50,000	50,000	50,000	50,000	
	100.0	41.9	19,600	28,000	35,500	47,600	47,600	15,200	23,700	31,200	43,200	43,200	43,200	43,200	
	110.0	34.7	16,600	24,200	30,900	41,800	41,800	12,700	20,300	27,000	37,800	37,800	37,800	37,800	
120.0	26.0	14,200	21,100	27,200	37,200	37,200	10,600	17,500	23,600	33,600	33,600	33,600	33,600		
130.0	12.7	12,100	18,400	24,000	33,100	33,100	8,800	15,100	20,700	29,900	29,900	29,900	29,900		
140' (42.67 m)	22.7	82.0	199,500*	208,800*	208,800*	208,800*	208,800*	195,800	208,800*	208,800*	208,800*	208,800*	208,800*	208,800*	N/A
	25.0	81.0	180,400*	199,500*	203,600*	203,600*	203,600*	158,000	199,500*	203,600*	203,600*	203,600*	203,600*	203,600*	
	30.0	79.0	132,400	165,200*	180,100*	192,800*	192,800*	111,100	152,300	180,100*	192,800*	192,800*	192,800*	192,800*	
	35.0	76.9	101,400	133,700	153,100*	173,600*	173,600*	84,500	116,800	145,700	173,600*	173,600*	173,600*	173,600*	
	40.0	74.7	81,300	108,000	131,400	150,600*	150,600*	67,800	94,200	117,600	150,600*	150,600*	150,600*	150,600*	
	50.0	70.5	57,400	76,700	94,200	118,700*	118,700*	47,200	66,900	84,000	112,200	112,200	112,200	112,200	
	60.0	66.0	43,300	58,900	72,600	94,900	94,900	35,600	50,800	64,600	86,800	86,800	86,800	86,800	
	70.0	61.5	34,400	47,000	58,300	76,700	76,700	27,800	40,300	51,700	70,400	70,400	70,400	70,400	
	80.0	56.7	27,900	38,600	48,300	64,200	64,200	22,200	33,200	42,600	58,500	58,500	58,500	58,500	
	90.0	51.7	23,100	32,600	40,800	54,700	54,700	18,100	27,700	36,100	49,700	49,700	49,700	49,700	
	100.0	46.2	19,300	27,800	35,300	47,300	47,300	15,000	23,400	30,900	42,900	42,900	42,900	42,900	
	110.0	40.3	16,300	23,900	30,700	41,500	41,500	12,400	20,000	26,700	37,500	37,500	37,500	37,500	
120.0	33.4	13,900	20,800	26,900	36,900	36,900	10,400	17,200	23,400	33,300	33,300	33,300	33,300		
130.0	25.0	11,900	18,200	23,800	32,900	32,900	8,600	14,900	20,500	29,700	29,700	29,700	29,700		
140.0	12.2	10,100	16,000	21,100	29,500	29,500	7,100	13,000	18,100	26,500	26,500	26,500	26,500		

# HC-278H Lift Crane Capacities - On Outriggers

Boom Length (ft.)	Load Radius (ft.)	Boom Angle (degree)	Capacities - On Outriggers Over Rear						Capacities - On Outriggers 360 Degree Rotation						
			0 + 0	"A" + 0	"AB" + 0	"ABCD" + 0	"A" ctwt.	"ABCD" + "A" ctwt.	0 + 0	"A" + 0	"AB" + 0	"ABCD" + 0	"A" ctwt.	"ABCD" + "A" ctwt.	"ABCD" + "AB" ctwt.
			ctwt.	ctwt.	ctwt.	ctwt.			ctwt.	ctwt.	ctwt.	ctwt.			
150' (45.72 m)	24.0	82.0	186,800*	193,700*	193,700*	193,700*	193,700*	171,800	193,700*	193,700*	193,700*	193,700*	193,700*	193,700*	193,700*
	25.0	81.6	179,700*	191,900*	191,900*	191,900*	158,100	191,900*	191,900*	191,900*	191,900*	191,900*	191,900*	191,900*	191,900*
	30.0	79.7	132,300	164,500*	179,500*	180,500*	111,100	152,200	179,500*	179,500*	179,500*	179,500*	179,500*	180,500*	180,500*
	35.0	77.7	101,200	133,500	152,500*	172,000*	84,400	116,700	145,600	172,000*	172,000*	172,000*	172,000*	172,000*	172,000*
	40.0	75.8	81,100	107,900	131,200	150,100*	67,600	94,000	117,400	150,100*	150,100*	150,100*	150,100*	150,100*	150,100*
	50.0	71.8	57,200	76,500	93,900	118,200*	47,000	66,700	83,800	111,900	111,900	111,900	111,900	115,100	118,200*
	60.0	67.7	43,000	58,600	72,400	94,600	35,400	50,600	64,300	86,600	86,600	86,600	89,000	92,400	92,400
	70.0	63.5	34,100	46,700	58,100	76,400	27,500	40,000	51,400	70,100	70,100	70,100	72,100	74,600	74,600
	80.0	59.2	27,600	38,300	48,000	63,900	22,000	32,900	42,300	58,200	58,200	58,200	60,000	62,300	62,300
	90.0	54.6	22,800	32,300	40,500	54,300	17,900	27,400	35,900	49,400	49,400	49,400	50,900	53,000	53,000
	100.0	49.8	19,000	27,500	35,000	51,700	14,700	23,100	30,600	42,600	42,600	42,600	44,000	45,800	45,800
	110.0	44.6	16,100	23,700	30,400	41,100	12,100	19,700	26,500	37,200	37,200	37,200	38,400	40,100	40,100
	120.0	38.8	13,600	20,500	26,600	36,600	10,100	17,000	23,100	33,100	33,100	33,100	34,200	35,600	35,600
	130.0	32.3	11,600	17,900	23,500	32,600	8,400	14,700	20,200	29,400	29,400	29,400	30,400	31,800	31,800
	140.0	24.2	9,900	15,700	20,900	29,300	6,900	12,700	17,900	26,300	26,300	26,300	27,200	28,500	28,500
150.0	11.8	8,400	13,800	18,600	26,400	5,600	11,000	15,800	23,600	23,600	23,600	24,500	25,600	25,600	
160' (48.77 m)	25.4	82.0	175,800*	177,700*	177,700*	177,700*	152,500	177,700*	177,700*	177,700*	177,700*	177,700*	177,700*	177,700*	177,700*
	30.0	80.3	132,300	163,900*	170,500*	170,500*	111,000	152,100	170,500*	170,500*	170,500*	170,500*	170,500*	170,500*	170,500*
	35.0	78.5	101,100	133,400	151,900*	163,000*	84,200	116,500	145,400	163,000*	163,000*	163,000*	163,000*	163,000*	163,000*
	40.0	76.7	80,900	107,700	131,000	149,500*	67,400	93,800	117,200	149,500*	149,500*	149,500*	149,500*	149,500*	149,500*
	50.0	73.0	56,900	76,200	93,700	117,600*	46,800	66,400	83,500	111,600	111,600	111,600	111,600	111,600	111,600
	60.0	69.2	42,800	58,300	72,100	96,400*	35,100	50,300	64,100	86,300	86,300	86,300	88,700	92,100	92,100
	70.0	65.3	33,900	46,400	57,800	80,900*	27,200	39,800	51,100	69,800	69,800	69,800	71,800	74,200	74,200
	80.0	61.3	27,400	38,000	47,700	69,700	21,700	32,700	42,000	57,900	57,900	57,900	59,700	62,000	62,000
	90.0	57.1	22,500	32,100	40,200	54,000	17,600	27,100	35,600	49,100	49,100	49,100	50,600	52,700	52,700
	100.0	52.8	18,800	27,200	34,700	46,700	14,400	22,800	30,300	42,300	42,300	42,300	43,700	45,500	45,500
	110.0	48.1	15,800	23,400	30,100	40,800	11,800	19,400	26,200	37,200	37,200	37,200	38,100	39,700	39,700
	120.0	43.1	13,300	20,200	26,300	36,300	9,800	16,700	22,800	32,800	32,800	32,800	33,900	35,300	35,300
	130.0	37.6	11,300	17,600	23,200	32,400	8,100	14,400	19,900	29,100	29,100	29,100	30,100	31,500	31,500
	140.0	31.2	9,600	15,400	20,600	29,000	6,600	12,400	17,600	26,000	26,000	26,000	26,900	28,200	28,200
	150.0	23.4	8,100	13,500	18,300	26,100	5,300	10,700	15,500	23,300	23,300	23,300	24,200	25,400	25,400
160.0	11.4	6,800	11,900	16,300	23,600	4,300	9,300	13,700	21,000	21,000	21,000	21,800	22,900	22,900	
170' (51.82 m)	26.8	82.0	163,100	163,800*	163,800*	163,800*	137,200	163,800*	163,800*	163,800*	163,800*	163,800*	163,800*	163,800*	163,800*
	30.0	80.9	132,100	159,700*	159,700*	159,700*	111,000	152,000	159,700*	159,700*	159,700*	159,700*	159,700*	159,700*	159,700*
	35.0	79.2	100,900	133,200	151,300*	162,700*	84,100	116,300	145,200	162,700*	162,700*	162,700*	162,700*	162,700*	162,700*
	40.0	77.5	80,700	107,500	130,700	144,100*	67,300	93,600	116,900	144,100*	144,100*	144,100*	144,100*	144,100*	144,100*
	50.0	74.0	56,700	76,000	93,400	117,100*	46,500	66,200	83,200	111,400	111,400	111,400	111,400	111,400	111,400
	60.0	70.5	42,500	58,100	71,800	95,900*	34,900	50,500	63,800	86,000	86,000	86,000	88,400	91,800	91,800
	70.0	66.9	33,600	46,100	57,500	80,400*	27,000	39,500	50,800	69,500	69,500	69,500	71,500	74,300	74,300
	80.0	63.1	27,100	37,700	47,400	69,200*	21,400	32,400	41,700	57,600	57,600	57,600	59,400	61,700	61,700
	90.0	59.3	22,200	31,800	39,900	59,000	17,300	26,800	35,300	48,800	48,800	48,800	50,300	52,400	52,400
	100.0	55.3	18,400	26,900	34,400	46,300	14,100	22,500	30,000	42,000	42,000	42,000	43,300	45,100	45,100
	110.0	51.1	15,500	23,100	29,800	40,500	11,500	19,100	25,900	36,900	36,900	36,900	37,800	39,400	39,400
	120.0	46.6	13,000	19,900	26,000	36,000	9,500	16,400	22,500	32,500	32,500	32,500	33,600	35,000	35,000
	130.0	41.7	11,000	17,300	22,900	32,000	7,700	14,000	19,600	28,800	28,800	28,800	29,800	31,100	31,100
	140.0	36.4	9,300	15,100	20,300	28,700	6,300	12,100	17,200	25,700	25,700	25,700	26,600	27,900	27,900

# HC-278H Lift Crane Capacities - On Outriggers

Boom Length (ft.)	Load Radius (ft.)	Boom Angle (degree)	Capacities - On Outriggers Over Rear						Capacities - On Outriggers 360 Degree Rotation						
			0 + 0	"A" + 0	"AB" + 0	"ABCD" + 0	"A" ctwt.	"ABCD" + "A" ctwt.	0 + 0	"A" + 0	"AB" + 0	"ABCD" + 0	"A" ctwt.	"ABCD" + "A" ctwt.	"ABCD" + "AB" ctwt.
			ctwt.	ctwt.	ctwt.	ctwt.			ctwt.	ctwt.	ctwt.	ctwt.			
170' (51.82 m)	150.0	30.3	7,800	13,200	18,000	25,800	28,800	31,300*	5,000	10,400	15,200	23,000	23,900	25,000	
	160.0	22.7	6,600	11,600	16,000	23,300	26,100	28,500*	4,000	9,000	13,400	20,700	21,500	22,600	
	170.0	11.1	5,400	10,100	14,300	21,100	23,800	26,100*	3,000	7,700	11,900	18,700	19,500	20,500	
	28.2	82.0	148,100	152,500*	152,500*	152,500*	152,500*	152,500*	124,100	152,500*	152,500*	152,500*	152,500*	152,500*	152,500*
	30.0	81.4	132,000	150,200*	150,200*	150,200*	150,200*	150,200*	110,900	150,200*	150,200*	150,200*	150,200*	150,200*	150,200*
	35.0	79.8	100,700	133,000	142,200*	142,200*	142,200*	142,200*	83,900	116,100	142,200*	142,200*	142,200*	142,200*	142,200*
	40.0	78.2	80,500	107,200	130,500	136,400*	136,400*	136,400*	67,100	93,400	116,700	136,400*	136,400*	136,400*	136,400*
	50.0	74.9	56,400	75,700	98,100	116,500*	116,500*	116,500*	46,300	66,000	82,900	111,500	114,200	114,200	116,500*
	60.0	71.6	42,200	57,800	71,500	93,700	95,400*	95,400*	34,600	49,700	63,500	85,600	88,100	88,100	91,500
	70.0	68.2	33,300	45,800	57,200	75,400	79,900*	79,900*	26,700	39,100	50,500	69,200	71,200	71,200	74,000
180' (54.86 m)	80.0	64.7	26,800	37,300	47,000	62,900	68,700*	68,700*	21,100	32,100	41,400	57,300	59,000	61,400	
	90.0	61.2	21,900	31,500	39,500	53,400	58,700	59,600*	17,000	26,500	35,000	48,400	50,000	52,000	
	100.0	57.5	18,100	26,600	34,100	46,000	50,700	52,400*	13,800	22,200	29,700	41,600	43,000	44,800	
	110.0	53.6	15,100	22,700	29,500	40,100	44,300	46,400*	11,200	18,800	25,500	36,600	37,400	39,000	
	120.0	49.5	12,700	19,600	25,700	35,700	39,200	41,500*	9,100	16,000	22,100	32,100	33,200	34,700	
	130.0	45.2	10,700	17,000	22,600	31,700	35,200	37,300*	7,400	13,700	19,300	28,500	29,500	30,800	
	140.0	40.5	9,000	14,800	19,900	28,400	31,600	34,000*	6,000	11,800	16,900	25,400	26,300	27,500	
	150.0	35.3	7,500	12,900	17,700	25,500	28,500	30,900*	4,700	10,100	14,900	22,700	23,600	24,700	
	160.0	29.4	6,200	11,300	15,700	23,000	25,800	28,100*	3,600	8,700	13,100	20,400	21,200	22,300	
	170.0	22.1	5,100	9,800	14,000	20,800	23,400	25,700*	2,700	7,400	11,600	18,400	19,200	20,200	
180.0	10.8	4,100	8,600	12,500	18,900	21,400	23,400*	--	6,300	10,200	16,600	17,300	18,300		
190'	29.6	82.0	135,200	139,300*	139,300*	139,300*	139,300*	139,300*	113,100	139,300*	139,300*	139,300*	139,300*	139,300*	
	30.0	81.9	131,900	138,900*	138,900*	138,900*	138,900*	138,900*	110,800	138,900*	138,900*	138,900*	138,900*	138,900*	
	35.0	80.4	100,600	132,800	134,100*	134,100*	134,100*	134,100*	83,700	115,900	134,100*	134,100*	134,100*	134,100*	
	40.0	78.8	80,200	107,000	128,700*	128,700*	128,700*	128,700*	66,900	93,200	116,400	128,700*	128,700*	128,700*	
	50.0	75.7	56,200	75,400	92,800	116,000*	116,000*	116,000*	46,000	65,700	82,700	111,200	113,900	116,000*	
	60.0	72.6	41,900	57,500	71,200	93,400	94,900*	94,900*	34,300	49,400	63,200	85,300	87,800	91,200	
	70.0	69.4	33,000	45,500	56,900	75,100	79,400*	79,400*	26,400	38,800	50,200	68,900	70,900	73,700	
	80.0	66.1	26,500	37,000	46,700	62,600	68,200*	68,200*	20,800	31,800	41,100	56,900	58,700	61,100	
	90.0	62.8	21,600	31,100	39,200	53,000	58,300	59,200*	16,600	26,200	34,700	48,100	49,600	51,700	
	100.0	59.4	17,800	26,300	33,800	45,600	50,300	51,900*	13,400	21,900	29,400	41,300	42,600	44,400	
190' (57.91 m)	110.0	55.8	14,800	22,400	29,100	39,800	44,000	46,000*	10,900	18,500	25,200	36,200	37,100	38,700	
	120.0	52.1	12,400	19,300	25,400	35,400	38,800	41,000*	8,800	15,700	21,800	31,800	32,900	34,400	
	130.0	48.1	10,300	16,600	22,200	31,400	34,900	37,200*	7,100	13,400	19,000	28,100	29,100	30,500	
	140.0	43.9	8,600	14,400	19,600	28,000	31,200	33,600*	5,600	11,400	16,600	25,000	25,900	27,200	
	150.0	39.4	7,200	12,600	17,300	25,100	28,100	30,400*	4,400	9,800	14,500	22,400	23,200	24,400	
	160.0	34.4	5,900	10,900	15,400	22,700	25,500	27,700*	3,300	8,300	12,800	20,100	20,900	21,900	
	170.0	28.6	4,800	9,500	13,700	20,500	23,100	25,300*	2,400	7,100	11,200	18,100	18,800	19,800	
	180.0	21.5	3,800	8,200	12,200	18,600	21,000	23,100*	--	6,000	9,900	16,300	17,000	18,000	
	190.0	10.5	2,900	7,100	10,800	16,900	19,200	20,900*	--	5,000	8,700	14,700	15,400	16,300	
	200' (60.96 m)	31.0	82.0	124,000	129,800*	129,800*	129,800*	129,800*	129,800*	104,100	129,800*	129,800*	129,800*	129,800*	129,800*
35.0		80.8	100,400	126,100*	126,100*	126,100*	126,100*	126,100*	83,500	115,700	126,100*	126,100*	126,100*	126,100*	
40.0		79.4	80,000	106,800	120,800*	120,800*	120,800*	120,800*	66,700	93,000	116,200	120,800*	120,800*	120,800*	
50.0		76.5	55,900	75,100	92,500	107,000*	107,000*	107,000*	45,700	65,400	82,400	107,000*	107,000*	107,000*	
60.0		73.5	41,600	57,200	71,000	93,000	94,300*	94,300*	34,100	49,100	62,900	85,000	87,500	90,800	

# HC-278H Lift Crane Capacities - On Outriggers

Boom Length (ft.)	Load Radius (ft.)	Boom Angle (degree)	Capacities - On Outriggers Over Rear					Capacities - On Outriggers 360 Degree Rotation								
			"A" + 0	"AB" + 0	"ABCD" + 0	"A" ctwt.	"ABCD" + "AB" ctwt.	0 + 0	"A" + 0	"AB" + 0	"ABCD" + 0	"A" ctwt.	"ABCD" + "AB" ctwt.			
			ctwt.	ctwt.	ctwt.			ctwt.	ctwt.	ctwt.	ctwt.	ctwt.	ctwt.			
200' <i>(60.96 m)</i>	70.0	70.5	32,700	45,100	56,500	74,700	78,900*	78,900*	8,500	26,100	38,500	49,900	68,500	70,600	73,400	
	80.0	67.4	26,200	37,100	46,400	62,300	67,700*	67,700*	20,500	31,500	40,700	56,600	58,400	60,700		
	90.0	64.3	21,300	30,800	38,800	52,700	58,000	58,700*	16,300	25,900	34,300	47,800	49,300	51,300		
	100.0	61.0	17,500	25,900	33,400	45,300	50,000	51,400*	13,100	21,600	29,100	40,900	42,300	44,100		
	110.0	57.7	14,500	22,100	28,800	39,400	43,600	45,400*	10,500	18,200	24,900	35,900	37,100	38,300		
	120.0	54.3	12,000	18,900	25,000	35,000	38,400	40,500*	8,500	15,400	21,500	31,500	32,600	34,000		
	130.0	50.6	10,000	16,300	21,900	31,000	34,500	36,700*	6,700	13,000	18,600	27,800	28,800	30,100		
	140.0	46.8	8,300	14,100	19,200	27,700	30,900	33,100*	5,300	11,100	16,200	24,700	25,600	26,800		
	150.0	42.8	6,800	12,200	17,000	24,800	27,800	30,000*	4,000	9,400	14,200	22,000	22,900	24,000		
	160.0	38.4	5,500	10,600	15,000	22,300	25,100	27,200*	3,000	8,000	12,400	19,700	20,500	21,600		
	170.0	33.5	4,400	9,200	13,300	20,100	22,800	24,800*	--	6,700	10,900	17,700	18,500	19,500		
	180.0	27.9	3,500	7,900	11,900	18,200	20,700	22,700*	--	5,600	9,500	16,000	16,700	17,600		
	190.0	20.9	2,600	6,800	10,500	16,500	18,900	20,700*	--	4,600	8,300	14,400	15,100	16,000		
	200.0	10.2	--	5,800	9,300	15,000	17,200	18,700*	--	3,700	7,300	13,000	13,600	14,500		
	210' <i>(64.01 m)</i>	32.4	82.0	114,400	120,000*	120,000*	120,000*	120,000*	120,000*	95,800	120,000*	120,000*	120,000*	120,000*	120,000*	120,000*
		35.0	81.3	100,200	118,500*	118,500*	118,500*	118,500*	118,500*	83,300	115,500	118,500*	118,500*	118,500*	118,500*	118,500*
		40.0	79.9	79,800	106,500	113,300*	113,300*	113,300*	113,300*	66,400	92,700	113,300*	113,300*	113,300*	113,300*	113,300*
		50.0	77.1	55,600	74,800	92,200	100,600*	100,600*	100,600*	45,500	65,200	82,100	100,600*	100,600*	100,600*	100,600*
		60.0	74.3	41,300	56,900	70,600	91,500*	91,500*	91,500*	33,800	48,800	62,600	84,700	87,200	90,500	
		70.0	71.4	32,400	44,800	56,200	74,400	78,400*	78,400*	25,800	38,200	49,600	68,200	70,300	73,000	
80.0		68.5	25,800	36,800	46,000	61,900	67,200*	67,200*	20,200	31,100	40,400	56,300	58,000	60,400		
90.0		65.6	20,900	30,500	38,500	52,300	57,600	58,200*	16,000	25,600	34,000	47,400	48,900	51,000		
100.0		62.5	17,100	25,600	33,100	44,900	49,600	50,900*	12,800	21,200	28,700	40,600	41,900	43,700		
110.0		59.4	14,100	21,700	28,500	39,000	43,300	45,000*	10,200	17,800	24,500	35,600	36,800	38,000		
120.0		56.2	11,700	18,600	24,700	34,700	38,100	40,000*	8,100	15,000	21,100	31,100	32,200	33,700		
130.0		52.8	9,600	16,000	21,500	30,700	34,200	36,200*	6,400	12,700	18,300	27,400	28,400	29,800		
140.0		49.3	7,900	13,700	18,900	27,300	30,500	32,600*	4,900	10,700	15,900	24,300	25,200	26,500		
150.0		45.6	6,500	11,900	16,600	24,400	27,400	29,500*	3,700	9,100	13,800	21,700	22,500	23,700		
160.0		41.7	5,200	10,200	14,700	22,000	24,800	26,800*	2,600	7,600	12,100	19,400	20,200	21,200		
170.0		37.4	4,100	8,800	13,000	19,800	22,400	24,400*	--	6,400	10,500	17,400	18,100	19,100		
180.0		32.6	3,100	7,500	11,500	17,900	20,300	22,200*	--	5,300	9,200	15,600	16,300	17,300		
190.0		27.2	2,300	6,400	10,100	16,200	18,500	20,300*	--	4,300	8,000	14,000	14,700	15,600		
200.0		20.4	--	5,400	8,900	14,700	16,900	18,500*	--	3,400	6,900	12,600	13,300	14,100		
210.0		10.0	--	4,500	7,900	13,300	15,400	16,600*	--	2,600	5,900	11,400	12,000	12,800		
220' <i>(67.06 m)</i>	33.8	82.0	--	105,600*	105,600*	105,600*	105,600*	105,600*	--	105,600*	105,600*	105,600*	105,600*	105,600*	105,600*	
	35.0	81.7	--	105,600*	105,600*	105,600*	105,600*	105,600*	--	105,600*	105,600*	105,600*	105,600*	105,600*	105,600*	
	40.0	80.4	--	103,700*	103,700*	103,700*	103,700*	103,700*	--	92,500	103,700*	103,700*	103,700*	103,700*		
	50.0	77.7	--	74,500	91,900	94,600*	94,600*	94,600*	--	64,900	81,800	94,600*	94,600*	94,600*		
	60.0	75.0	--	56,600	70,300	86,000*	86,000*	86,000*	--	48,500	62,300	84,300	86,000*	86,000*		
	70.0	72.3	--	44,500	55,900	73,100*	73,100*	73,100*	--	37,900	49,200	67,900	69,900	72,700		
	80.0	69.6	--	36,500	45,700	61,600	64,900*	64,900*	--	30,800	40,000	55,900	57,700	60,000		
	90.0	66.8	--	30,200	38,100	52,000	57,300	57,300	--	25,200	33,700	47,000	48,500	50,600		
	100.0	63.9	--	25,300	32,800	44,600	49,300	49,300	--	20,900	28,400	40,200	41,500	43,400		
	110.0	60.9	--	21,400	28,100	38,700	42,900	44,500*	--	17,500	24,200	35,200	36,400	37,600		
	120.0	57.9	--	18,200	24,300	34,300	37,700	39,500*	--	14,700	20,800	30,800	31,900	33,300		
130.0	54.8	--	15,600	21,200	30,300	33,800	34,600*	--	12,300	17,900	27,100	28,100	29,400			

# HC-278H Lift Crane Capacities - On Outriggers

Boom Length (ft.)	Load Radius (ft.)	Boom Angle (degree)	Capacities - On Outriggers Over Rear						Capacities - On Outriggers 360 Degree Rotation					
			0 + 0	"A" + 0	"AB" + 0	"ABCD" + 0	"A" ctwt.	"ABCD" + "AB" ctwt.	0 + 0	"A" + 0	"AB" + 0	"ABCD" + 0	"A" ctwt.	"ABCD" + "AB" ctwt.
			ctwt.	ctwt.	ctwt.	ctwt.	ctwt.	ctwt.	ctwt.	ctwt.	ctwt.	ctwt.	ctwt.	ctwt.
220' (67.06 m)	140.0	51.5	←	13,400	18,500	27,000	30,200	31,200*	10,400	15,500	24,000	24,900	26,100	
	150.0	48.1	←	11,500	16,300	24,100	27,100	28,200*	8,700	13,500	21,300	22,200	23,300	
	160.0	44.5	←	9,900	14,300	21,600	24,400	25,500*	7,300	11,700	19,000	19,800	20,900	
	170.0	40.7	←	8,400	12,600	19,400	22,000	23,100*	6,000	10,200	17,000	17,700	18,800	
	180.0	36.5	←	7,200	11,100	17,500	20,000	20,900*	4,900	8,800	15,200	15,900	16,900	
	190.0	31.9	←	6,100	9,800	15,800	18,100	19,000*	3,900	7,600	13,700	14,300	15,200	
	200.0	26.5	←	5,100	8,600	14,300	16,500	17,200*	3,000	6,500	12,300	12,900	13,800	
	210.0	19.9	←	4,200	7,500	13,000	15,000	15,600*	2,200	5,600	11,000	11,600	12,400	
	220.0	9.7	←	3,400	6,600	11,700	13,700	14,200*	--	4,700	9,900	10,500	11,200	
	230' (70.10 m)	35.2	82.0	←	95,300*	95,300*	95,300*	95,300*	95,300*	95,300*	95,300*	95,300*	95,300*	95,300*
		40.0	80.8	←	94,700*	94,700*	94,700*	94,700*	94,700*	92,200	94,700*	94,700*	94,700*	94,700*
		50.0	78.3	←	74,200	88,800*	88,800*	88,800*	88,800*	64,600	81,500	88,800*	88,800*	88,800*
60.0		75.7	←	56,300	70,000	81,000*	81,000*	81,000*	48,200	62,000	81,000*	81,000*	81,000*	
70.0		73.1	←	44,200	55,500	68,900*	68,900*	68,900*	37,500	48,900	67,600	68,900*	68,900*	
80.0		70.5	←	36,200	45,300	60,900*	60,900*	60,900*	30,500	39,700	55,600	57,300	59,700	
90.0		67.8	←	29,800	37,800	51,600	54,100*	54,100*	24,900	33,400	46,700	48,200	50,300	
100.0		65.1	←	24,900	32,400	44,200	48,100*	48,100*	20,600	28,100	39,800	41,200	43,000	
110.0		62.3	←	21,000	27,800	38,300	42,500	42,900*	17,100	23,800	34,900	36,100	37,200	
120.0		59.5	←	17,900	24,000	34,000	35,800*	35,800*	14,300	20,400	30,400	31,500	33,000	
130.0		56.5	←	15,200	20,800	30,000	32,200*	32,200*	12,000	17,600	26,700	27,700	29,100	
140.0		53.5	←	13,000	18,200	26,600	29,000*	29,000*	10,000	15,200	23,600	24,500	25,800	
150.0	50.3	←	11,100	15,900	23,700	26,100*	26,100*	8,300	13,100	20,900	21,800	23,000		
160.0	47.0	←	9,500	13,900	21,200	23,400*	23,400*	6,900	11,300	18,600	19,400	20,500		
170.0	43.5	←	8,100	12,200	19,100	21,100*	21,100*	5,600	9,800	16,600	17,400	18,400		
180.0	39.8	←	6,800	10,700	17,100	19,000*	19,000*	4,500	8,400	14,900	15,600	16,500		
190.0	35.7	←	5,700	9,400	15,500	17,100*	17,100*	3,500	7,200	13,300	14,000	14,900		
200.0	31.2	←	4,700	8,200	13,900	15,300*	15,300*	2,700	6,200	11,900	12,500	13,400		
210.0	25.9	←	3,800	7,100	12,600	13,600*	13,600*	--	5,200	10,600	11,200	12,100		
220.0	19.5	←	3,000	6,200	11,400	12,200*	12,200*	--	4,300	9,500	10,100	10,900		
230.0	9.5	←	2,300	5,300	10,300	10,900*	10,900*	--	3,600	8,500	9,000	9,800		
240' (73.15 m)	36.6	82.0	←	86,600*	86,600*	86,600*	86,600*	86,600*	86,600*	86,600*	86,600*	86,600*	86,600*	
	40.0	81.2	←	86,000*	86,000*	86,000*	86,000*	86,000*	86,000*	86,000*	86,000*	86,000*	86,000*	
	50.0	78.7	←	73,900	83,300*	83,300*	83,300*	83,300*	64,300	81,200	83,300*	83,300*	83,300*	
	60.0	76.3	←	55,900	69,700	76,100*	76,100*	76,100*	47,900	61,700	76,100*	76,100*	76,100*	
	70.0	73.8	←	43,800	55,200	64,600*	64,600*	64,600*	37,200	48,600	64,600*	64,600*	64,600*	
	80.0	71.3	←	35,800	45,000	57,200*	57,200*	57,200*	30,200	39,300	55,200	57,000*	57,200*	
	90.0	68.8	←	29,500	37,400	50,700*	50,700*	50,700*	24,600	33,000	46,300	47,800	49,900	
	100.0	66.2	←	24,600	32,100	43,800	45,000*	45,000*	20,200	27,700	39,500	40,800	42,900	
	110.0	63.6	←	20,700	27,400	37,900	39,800*	39,800*	16,800	23,500	34,500	35,700	36,800	
	120.0	60.9	←	17,500	23,600	33,100*	33,100*	33,100*	14,000	20,100	30,100	31,200	32,600	
	130.0	58.1	←	14,900	20,500	29,500*	29,500*	29,500*	11,600	17,200	26,400	27,400	28,700	
	140.0	55.2	←	12,700	17,800	26,300*	26,300*	26,300*	9,700	14,800	23,200	24,200	25,400	
150.0	52.3	←	10,800	15,500	23,400	23,500*	23,500*	8,000	12,800	20,600	21,400	22,600		
160.0	49.2	←	9,100	13,600	20,900	21,000*	21,000*	6,500	11,000	18,300	19,100	20,100		
170.0	46.0	←	7,700	11,900	18,700*	18,700*	18,700*	5,300	9,400	16,300	17,000	18,000		
180.0	42.5	←	6,400	10,400	16,700*	16,700*	16,700*	4,100	8,100	14,500	15,200	16,100		



# HC-278H Lift Crane Capacities - On Outriggers

Boom Length (ft.)	Load Radius (ft.)	Boom Angle (degree)	Capacities - On Outriggers Over Rear						Capacities - On Outriggers 360 Degree Rotation					
			0 + 0	"A" + 0	"AB" + 0	"ABCD" + 0	"A" ctwt.	"ABCD" + "AB" ctwt.	0 + 0	"A" + 0	"AB" + 0	"ABCD" + 0	"A" ctwt.	"ABCD" + "AB" ctwt.
			ctwt.	ctwt.	ctwt.	ctwt.			ctwt.	ctwt.	ctwt.	ctwt.		
240' <i>(73.15 m)</i>	190.0	38.9		5,300	9,000	14,800*	14,800*	14,800*	14,800*	3,200	6,900	12,900	13,600	14,500
	200.0	34.9		4,300	7,800	13,100*	13,100*	13,100*	2,300	5,800	11,500	12,200	13,000	
	210.0	30.5		3,400	6,800	11,600*	11,600*	11,600*	--	4,800	10,300	10,900	11,600*	
	220.0	25.4		2,600	5,800	10,200*	10,200*	10,200*	--	4,000	9,100	9,700	10,200*	
	230.0	19.1		--	4,900	8,900*	8,900*	8,900*	--	3,200	8,100	8,700	8,900*	
	240.0	9.3		--	4,100	7,800*	7,800*	7,800*	--	2,500	7,200	7,700	7,800*	
250' <i>(76.20 m)</i>	38.0	82.0			78,700*	78,700*	78,700*	78,700*		78,700*	78,700*	78,700*	78,700*	78,700*
	40.0	81.5			78,700*	78,700*	78,700*	78,700*		78,700*	78,700*	78,700*	78,700*	78,700*
	50.0	79.2			76,700*	76,700*	76,700*	76,700*		76,700*	76,700*	76,700*	76,700*	76,700*
	60.0	76.9			69,400	69,400	72,400*	72,400*		61,400	72,400*	72,400*	72,400*	72,400*
	70.0	74.5			54,900	54,900	66,700*	66,700*		48,200	66,700*	66,700*	66,700*	66,700*
	80.0	72.1			44,600	44,600	61,100*	61,100*		39,000	54,900	54,900	56,600	59,000
	90.0	69.7			37,000	37,000	50,900	55,900*		32,600	45,900	45,900	47,500	49,500
	100.0	67.2			31,700	31,700	43,400	48,100		27,300	39,000	39,000	40,400	42,200
	110.0	64.7			27,000	27,000	37,500	41,700		23,100	34,100	34,100	35,300	36,900
	120.0	62.1			23,200	23,200	33,200	37,000		19,600	29,600	29,600	30,700	32,200
	130.0	59.5			20,000	20,000	29,200	32,700		16,800	25,900	25,900	26,900	28,300
	140.0	56.8			17,400	17,400	25,800	29,000		14,400	22,800	22,800	23,700	25,000
150.0	54.0			15,100	15,100	22,900	25,900		12,300	20,100	20,100	21,000	22,100	
160.0	51.1			13,100	13,100	20,400	23,200		10,500	17,800	17,800	18,600	19,700	
170.0	48.1			11,400	11,400	18,200	20,800		9,000	15,800	15,800	16,600	17,600	
180.0	45.0			9,900	9,900	16,300	18,800		7,600	14,000	14,000	14,700	15,700	
190.0	41.6			8,600	8,600	14,600	16,900		6,400	12,500	12,500	13,100	14,000	
200.0	38.1			7,400	7,400	13,100	15,300		5,300	11,000	11,000	11,700	12,500	
210.0	34.2			6,300	6,300	11,700	13,800		4,300	9,800	9,800	10,400	11,200	
220.0	29.8			5,300	5,300	10,500	12,500		3,500	8,700	8,700	9,200	10,000	
230.0	24.9			4,400	4,400	9,400	11,300		2,700	7,600	7,600	8,200	8,900	
240.0	18.7			3,700	3,700	8,400	10,200		--	6,700	6,700	7,200	7,900	
250.0	9.1			2,900	2,900	7,500	9,200		--	5,800	5,800	6,300	7,000	
260' <i>(79.25 m)</i>	39.4	82.0			69,100*	69,100*	69,100*	69,100*		69,100*	69,100*	69,100*	69,100*	69,100*
	40.0	81.9			69,100*	69,100*	69,100*	69,100*		69,100*	69,100*	69,100*	69,100*	69,100*
	50.0	79.6			68,000*	68,000*	68,000*	68,000*		68,000*	68,000*	68,000*	68,000*	68,000*
	60.0	77.4			66,900*	66,900*	66,900*	66,900*		61,100	66,900*	66,900*	66,900*	66,900*
	70.0	75.1			54,500	54,500	61,900*	61,900*		47,900	61,900*	61,900*	61,900*	61,900*
	80.0	72.8			44,300	44,300	57,200*	57,200*		38,600	54,500	54,500	56,300	57,200*
	90.0	70.5			36,700	36,700	50,500	52,900*		32,300	45,600	45,600	47,100	49,100
	100.0	68.1			31,300	31,300	43,000	47,700		27,000	38,700	38,700	40,000	41,800
	110.0	65.7			26,700	26,700	37,100	41,300		22,700	33,800	33,800	35,000	36,600
	120.0	63.3			22,800	22,800	32,800	36,700		19,300	29,300	29,300	30,400	31,900
	130.0	60.8			19,700	19,700	28,800	32,300		16,400	25,600	25,600	26,600	27,900
	140.0	58.2			17,000	17,000	25,400	28,700		14,000	22,400	22,400	23,400	24,600
150.0	55.6			14,700	14,700	22,500	25,500		11,900	19,800	19,800	20,600	21,800	
160.0	52.9			12,800	12,800	20,000	22,800		10,200	17,400	17,400	18,200	19,300	
170.0	50.1			11,000	11,000	17,900	20,500		8,600	15,400	15,400	16,200	17,200	
180.0	47.1			9,500	9,500	15,900	18,400		7,200	13,700	13,700	14,400	15,300	
190.0	44.1			8,200	8,200	14,200	16,600		6,000	12,100	12,100	12,700	13,600	

# HC-278H Lift Crane Capacities - On Outriggers

Boom Length (ft.)	Load Radius (ft.)	Boom Angle (degree)	Capacities - On Outriggers Over Rear						Capacities - On Outriggers 360 Degree Rotation						
			0 + 0	"A" + 0	"AB" + 0	"ABCD" + 0	"ABCD" + "A"	"ABCD" + "AB"	0 + 0	"A" + 0	"AB" + 0	"ABCD" + 0	"ABCD" + "A"	"ABCD" + "AB"	
			ctwt.	ctwt.	ctwt.	ctwt.	ctwt.	ctwt.	ctwt.	ctwt.	ctwt.	ctwt.	ctwt.	ctwt.	ctwt.
260' (79.25 m)	200.0	40.8	←	←	7,000	12,700	14,900	16,100*	←	←	4,900	10,700	11,300	12,200	
	210.0	37.3	←	←	5,900	11,400	13,400	14,500*	←	←	4,000	9,400	10,000	10,800	
	220.0	33.5	←	←	4,900	10,100	12,100	13,100*	←	←	3,100	8,300	8,800	9,600	
	230.0	29.3	←	←	4,100	9,000	10,900	11,800*	←	←	2,300	7,200	7,800	8,500	
	240.0	24.4	←	←	3,300	8,000	9,800	10,600*	←	←	--	6,300	6,800	7,500	
	250.0	18.3	←	←	2,500	7,100	8,800	9,500*	←	←	--	5,500	6,000	6,600	
	260.0	9.0	←	←	--	6,200	7,900	8,600*	←	←	--	4,700	5,200	5,800	
	270' (82.30 m)	40.7	82.0	←	←	63,200*	63,200*	63,200*	63,200*	←	←	63,200*	63,200*	63,200*	63,200*
		50.0	80.0	←	←	62,100*	62,100*	62,100*	62,100*	←	←	62,100*	62,100*	62,100*	62,100*
		60.0	77.8	←	←	61,300*	61,300*	61,300*	61,300*	←	←	60,800	61,300*	61,300*	61,300*
70.0		75.7	←	←	54,200	54,200*	56,700*	56,700*	←	←	47,600	56,700*	56,700*	56,700*	
80.0		73.5	←	←	43,900	43,900*	52,400*	52,400*	←	←	38,300	52,400*	52,400*	52,400*	
90.0		71.2	←	←	36,900	48,200*	48,200*	48,200*	←	←	32,000	45,200	46,700	48,200*	
100.0		69.0	←	←	31,000	42,700	44,500*	44,500*	←	←	26,600	38,300	39,600	41,500	
110.0		66.7	←	←	26,300	36,700	40,900*	40,900*	←	←	22,400	33,400	34,600	36,200	
120.0		64.4	←	←	22,500	32,500	35,300*	35,300*	←	←	18,900	28,900	30,000	31,500	
130.0		62.0	←	←	19,300	28,500	32,000	32,600*	←	←	16,100	25,200	26,200	27,600	
280' (85.34 m)	140.0	59.5	←	←	16,600	25,100	28,300	29,700*	←	←	13,600	22,100	23,000	24,200	
	150.0	57.1	←	←	14,400	22,200	25,200	26,600*	←	←	11,600	19,400	20,200	21,400	
	160.0	54.5	←	←	12,400	19,700	22,500	23,800*	←	←	9,800	17,100	17,900	19,000	
	170.0	51.8	←	←	10,700	17,500	20,100	21,400*	←	←	8,200	15,100	15,800	16,800	
	180.0	49.1	←	←	9,100	15,600	18,000	19,300*	←	←	6,900	13,300	14,000	14,900	
	190.0	46.2	←	←	7,800	13,900	16,200	17,300*	←	←	5,600	11,700	12,400	13,300	
	200.0	43.2	←	←	6,600	12,300	14,500	15,600*	←	←	4,600	10,300	10,900	11,800	
	210.0	40.0	←	←	5,500	11,000	13,100	14,000*	←	←	3,600	9,000	9,600	10,400	
	220.0	36.6	←	←	4,600	9,700	11,700	12,600*	←	←	2,700	7,900	8,500	9,200	
	230.0	32.8	←	←	3,700	8,600	10,500	11,300*	←	←	--	6,900	7,400	8,100	
280' (85.34 m)	240.0	28.7	←	←	2,900	7,600	9,400	10,200*	←	←	--	5,900	6,400	7,100	
	250.0	23.9	←	←	2,200	6,700	8,400	9,100*	←	←	--	5,100	5,600	6,200	
	260.0	18.0	←	←	--	5,800	7,500	8,100*	←	←	--	4,300	4,800	5,400	
	270.0	8.8	←	←	--	5,100	6,700	7,200*	←	←	--	3,600	4,000	4,700	
	42.1	82.0	←	←	57,800*	57,800*	57,800*	57,800*	←	←	57,800*	57,800*	57,800*	57,800*	
	50.0	80.4	←	←	57,100*	57,100*	57,100*	57,100*	←	←	57,100*	57,100*	57,100*	57,100*	
	60.0	78.3	←	←	56,000*	56,000*	56,000*	56,000*	←	←	56,000*	56,000*	56,000*	56,000*	
	70.0	76.2	←	←	52,000*	52,000*	52,000*	52,000*	←	←	52,000*	52,000*	52,000*	52,000*	
	80.0	74.1	←	←	48,100*	48,100*	48,100*	48,100*	←	←	48,100*	48,100*	48,100*	48,100*	
	90.0	71.9	←	←	44,200*	44,200*	44,200*	44,200*	←	←	44,200*	44,200*	44,200*	44,200*	
280' (85.34 m)	100.0	69.8	←	←	40,600*	40,600*	40,600*	40,600*	←	←	40,600*	40,600*	40,600*	40,600*	
	110.0	67.6	←	←	35,000*	35,000*	35,000*	35,000*	←	←	35,000*	35,000*	35,000*	35,000*	
	120.0	65.3	←	←	32,100	32,100	32,400*	32,400*	←	←	32,100	32,600	33,100	33,100	
	130.0	63.1	←	←	28,100	28,100	29,900*	29,900*	←	←	28,100	28,800	29,800	31,100	
	140.0	60.7	←	←	24,700	24,700	27,700*	27,700*	←	←	24,700	25,700	26,600	27,200	
	150.0	58.4	←	←	21,800	21,800	24,800	25,600*	←	←	21,800	22,900	23,900	25,000	
	160.0	55.9	←	←	19,300	19,300	22,100	23,300*	←	←	19,300	20,000	21,000	21,000	
	170.0	53.4	←	←	17,100	17,100	19,700	20,900*	←	←	17,100	17,500	18,600	18,600	
	180.0	50.8	←	←	15,200	15,200	17,600	18,800*	←	←	15,200	15,400	16,400	16,400	
				←	←					←	←				

# HC-278H Lift Crane Capacities - On Outriggers

Boom Length (ft.)	Load Radius (ft.)	Boom Angle (degree)	Capacities - On Outriggers Over Rear					Capacities - On Outriggers 360 Degree Rotation						
			0 + 0	"A" + 0	"AB" + 0	"ABCD" + 0	"ABCD" + "A" ctwt.	0 + 0	"A" + 0	"AB" + 0	"ABCD" + 0	"ABCD" + "A" ctwt.	"ABCD" + "AB" ctwt.	
			ctwt.	ctwt.	ctwt.	ctwt.	ctwt.	ctwt.	ctwt.	ctwt.	ctwt.	ctwt.	ctwt.	
280' (85.34 m)	190.0	48.1	←	←	←	13,500	15,800	16,900*	←	←	←	11,300	12,000	12,900
	200.0	45.3	←	←	←	11,900	14,100	15,100*	←	←	←	9,900	10,500	11,400
	210.0	42.4	←	←	←	10,600	12,700	13,600*	←	←	←	8,600	9,200	10,000
	220.0	39.2	←	←	←	9,300	11,300	12,100*	←	←	←	7,500	8,100	8,900
	230.0	35.9	←	←	←	8,200	10,100	10,900*	←	←	←	6,500	7,000	7,700
	240.0	32.2	←	←	←	7,200	9,000	9,700*	←	←	←	5,500	6,100	6,800
	250.0	28.2	←	←	←	6,300	8,000	8,600*	←	←	←	4,700	5,200	5,800
	260.0	23.5	←	←	←	5,400	7,100	7,600*	←	←	←	3,900	4,400	5,000
	270.0	17.6	←	←	←	4,700	6,300	6,700*	←	←	←	3,200	3,600	4,300
	280.0	8.6	←	←	←	4,000	5,500	5,800*	←	←	←	2,500	3,000	3,600
290' (88.39 m)	43.5	82.0	←	←	←	53,200*	53,200*	53,200*	←	←	←	53,200*	53,200*	53,200*
	50.0	80.7	←	←	←	52,500*	52,500*	52,500*	←	←	←	52,500*	52,500*	52,500*
	60.0	78.7	←	←	←	51,500*	51,500*	51,500*	←	←	←	51,500*	51,500*	51,500*
	70.0	76.7	←	←	←	47,700*	47,700*	47,700*	←	←	←	47,700*	47,700*	47,700*
	80.0	74.6	←	←	←	44,100*	44,100*	44,100*	←	←	←	44,100*	44,100*	44,100*
	90.0	72.6	←	←	←	40,500*	40,500*	40,500*	←	←	←	40,500*	40,500*	40,500*
	100.0	70.5	←	←	←	34,700*	34,700*	34,700*	←	←	←	34,700*	34,700*	34,700*
	110.0	68.4	←	←	←	32,100*	32,100*	32,100*	←	←	←	32,100*	32,100*	32,100*
	120.0	66.2	←	←	←	29,700*	29,700*	29,700*	←	←	←	29,700*	29,700*	29,700*
	130.0	64.1	←	←	←	27,400*	27,400*	27,400*	←	←	←	27,400*	27,400*	27,400*
300' (91.44 m)	140.0	61.8	←	←	←	24,300	25,400*	25,400*	←	←	←	21,300	22,300	23,500
	150.0	59.6	←	←	←	21,400	23,500*	23,500*	←	←	←	18,600	19,500	20,700
	160.0	57.3	←	←	←	18,900	21,700	21,800*	←	←	←	16,300	17,100	18,200
	170.0	54.9	←	←	←	16,700	19,300	20,200*	←	←	←	14,300	15,000	16,100
	180.0	52.4	←	←	←	14,800	17,300	18,300*	←	←	←	12,500	13,200	14,200
	190.0	49.9	←	←	←	13,100	15,400	16,400*	←	←	←	10,900	11,600	12,500
	200.0	47.3	←	←	←	11,600	13,800	14,600*	←	←	←	9,500	10,200	11,000
	210.0	44.5	←	←	←	10,200	12,300	13,100*	←	←	←	8,300	8,900	9,700
	220.0	41.6	←	←	←	9,000	10,900	11,700*	←	←	←	7,100	7,700	8,500
	230.0	38.5	←	←	←	7,800	9,700	10,400*	←	←	←	6,100	6,600	7,400
300' (91.44 m)	240.0	35.2	←	←	←	6,800	8,600	9,200*	←	←	←	5,100	5,700	6,400
	250.0	31.7	←	←	←	5,900	7,600	8,100*	←	←	←	4,300	4,800	5,500
	260.0	27.7	←	←	←	5,000	6,700	7,100*	←	←	←	3,500	4,000	4,600
	270.0	23.1	←	←	←	4,300	5,900	6,200*	←	←	←	2,800	3,200	3,900
	280.0	17.3	←	←	←	3,600	5,100	5,300*	←	←	←	2,100	2,600	3,200
	290.0	8.5	←	←	←	2,900	4,400	4,600*	←	←	←	1,500	2,000	2,500
	44.9	82.0	←	←	←	49,000*	49,000*	49,000*	←	←	←	49,000*	49,000*	49,000*
	50.0	81.0	←	←	←	48,400*	48,400*	48,400*	←	←	←	48,400*	48,400*	48,400*
	60.0	79.1	←	←	←	47,500*	47,500*	47,500*	←	←	←	47,500*	47,500*	47,500*
	70.0	77.1	←	←	←	43,900*	43,900*	43,900*	←	←	←	43,900*	43,900*	43,900*
80.0	75.2	←	←	←	40,300*	40,300*	40,300*	←	←	←	40,300*	40,300*	40,300*	
90.0	73.2	←	←	←	34,300*	34,300*	34,300*	←	←	←	34,300*	34,300*	34,300*	
100.0	71.2	←	←	←	31,700*	31,700*	31,700*	←	←	←	31,700*	31,700*	31,700*	
110.0	69.1	←	←	←	29,300*	29,300*	29,300*	←	←	←	29,300*	29,300*	29,300*	
120.0	67.1	←	←	←	27,100*	27,100*	27,100*	←	←	←	27,100*	27,100*	27,100*	
130.0	65.0	←	←	←	25,100*	25,100*	25,100*	←	←	←	24,100	25,100*	25,100*	

# HC-278H Lift Crane Capacities - On Outriggers

Boom Length (ft.)	Load Radius (ft.)	Boom Angle (degree)	Capacities - On Outriggers Over Rear					Capacities - On Outriggers 360 Degree Rotation						
			0 + 0	"A" + 0	"AB" + 0	"ABCD" + 0	"ABCD" + "A"	"ABCD" + "AB"	0 + 0	"A" + 0	"AB" + 0	"ABCD" + 0	"ABCD" + "A"	"ABCD" + "AB"
			ctwt.	ctwt.	ctwt.	ctwt.	"A" ctwt.	"AB" ctwt.	ctwt.	ctwt.	ctwt.	ctwt.	"A" ctwt.	"AB" ctwt.
300' (91.44 m)	140.0	62.9	←	←	←	23,200*	23,200*	23,200*	21,000	21,000	21,900	23,100		
	150.0	60.7	←	←	←	21,500*	21,500*	18,300	18,300	19,100	20,300			
	160.0	58.5	←	←	←	19,800*	19,800*	15,900	15,900	16,700	17,800			
	170.0	56.2	←	←	←	18,500*	18,500*	13,900	13,900	14,700	15,700			
	180.0	53.9	←	←	←	16,900	16,900	12,100	12,100	12,800	13,800			
	190.0	51.5	←	←	←	15,000	15,000	10,500	10,500	11,200	12,100			
	200.0	49.0	←	←	←	13,400	13,400	9,100	9,100	9,800	10,600			
	210.0	46.4	←	←	←	11,900	11,900	7,900	7,900	8,500	9,300			
	220.0	43.7	←	←	←	10,600	10,600	6,700	6,700	7,300	8,100			
	230.0	40.9	←	←	←	9,300	9,300	5,700	5,700	6,200	7,000			
240.0	37.9	←	←	←	8,200	8,200	4,700	4,700	5,300	6,000				
250.0	34.6	←	←	←	7,200	7,200	3,900	3,900	4,400	5,100				
260.0	31.1	←	←	←	6,300	6,300	3,100	3,100	3,600	4,200				
270.0	27.2	←	←	←	5,500	5,500	2,400	2,400	2,800	3,500				
280.0	22.7	←	←	←	4,700	4,700	--	--	2,200	2,800				
290.0	17.0	←	←	←	4,000	4,000	--	--	--	2,100				
300.0	8.3	←	←	←	3,300	3,300	--	--	--	--				
310' (94.49 m)	46.3	82.0	←	←	←	45,100*	45,100*	45,100*	45,100*	45,100*	45,100*	45,100*		
	50.0	81.3	←	←	←	44,800*	44,800*	44,800*	44,800*	44,800*	44,800*	44,800*		
	60.0	79.4	←	←	←	43,700*	43,700*	43,700*	43,700*	43,700*	43,700*	43,700*		
	70.0	77.5	←	←	←	40,400*	40,400*	40,400*	40,400*	40,400*	40,400*	40,400*		
	80.0	75.6	←	←	←	34,400*	34,400*	34,400*	34,400*	34,400*	34,400*	34,400*		
	90.0	73.7	←	←	←	31,600*	31,600*	31,600*	31,600*	31,600*	31,600*	31,600*		
	100.0	71.8	←	←	←	29,200*	29,200*	29,200*	29,200*	29,200*	29,200*	29,200*		
	110.0	69.8	←	←	←	27,000*	27,000*	27,000*	27,000*	27,000*	27,000*	27,000*		
	120.0	67.9	←	←	←	25,000*	25,000*	25,000*	25,000*	25,000*	25,000*	25,000*		
	130.0	65.8	←	←	←	22,900*	22,900*	22,900*	22,900*	22,900*	22,900*	22,900*		
140.0	63.8	←	←	←	21,200*	21,200*	21,200*	21,200*	21,200*	21,200*	21,200*			
150.0	61.7	←	←	←	19,600*	19,600*	19,600*	19,600*	19,600*	19,600*	19,600*			
160.0	59.6	←	←	←	18,100*	18,100*	18,100*	18,100*	18,100*	18,100*	18,100*			
170.0	57.4	←	←	←	16,900*	16,900*	16,900*	16,900*	16,900*	16,900*	16,900*			
180.0	55.2	←	←	←	15,600*	15,600*	15,600*	15,600*	15,600*	15,600*	15,600*			
190.0	52.9	←	←	←	14,000	14,000	14,000	14,000	14,000	14,000	14,000			
200.0	50.6	←	←	←	12,300	12,300	12,300	12,300	12,300	12,300	12,300			
210.0	48.1	←	←	←	10,800	10,800	10,800	10,800	10,800	10,800	10,800			
220.0	45.6	←	←	←	9,400	9,400	9,400	9,400	9,400	9,400	9,400			
230.0	43.0	←	←	←	8,200	8,200	8,200	8,200	8,200	8,200	8,200			
240.0	40.2	←	←	←	7,100	7,100	7,100	7,100	7,100	7,100	7,100			
250.0	37.2	←	←	←	6,000	6,000	6,000	6,000	6,000	6,000	6,000			
260.0	34.1	←	←	←	5,100	5,100	5,100	5,100	5,100	5,100	5,100			
270.0	30.6	←	←	←	4,200	4,200	4,200	4,200	4,200	4,200	4,200			
280.0	26.7	←	←	←	3,500	3,500	3,500	3,500	3,500	3,500	3,500			
290.0	22.3	←	←	←	2,700	2,700	2,700	2,700	2,700	2,700	2,700			
300.0	16.8	←	←	←	2,100	2,100	2,100	2,100	2,100	2,100	2,100			
310.0	8.2	←	←	←	--	--	--	--	--	--	--			

# HC-278H Lift Crane Capacities - On Outriggers

Boom Length (ft.)	Load Radius (ft.)	Boom Angle (degree)	Capacities - On Outriggers Over Rear				Capacities - On Outriggers 360 Degree Rotation						
			0 + 0 ctwt.	"A" + 0 ctwt.	"AB" + 0 ctwt.	"ABCD" + 0 ctwt.	0 + 0 ctwt.	"A" + 0 ctwt.	"AB" + 0 ctwt.	"ABCD" + 0 ctwt.			
			"A" ctwt.	"AB" ctwt.	"ABCD" ctwt.	"AB" + "ABCD" ctwt.	"A" ctwt.	"AB" ctwt.	"ABCD" ctwt.	"AB" + "ABCD" ctwt.			
	47.7	82.0	←	←	←	←	←	←	←	40,700*	40,400*	40,700*	40,700*
	50.0	81.6	←	←	←	←	←	←	←	40,400*	35,900*	40,400*	40,400*
	60.0	79.8	←	←	←	←	←	←	←	35,900*	33,200*	35,900*	35,900*
	70.0	77.9	←	←	←	←	←	←	←	33,200*	30,700*	33,200*	33,200*
	80.0	76.1	←	←	←	←	←	←	←	30,700*	28,400*	30,700*	30,700*
	90.0	74.3	←	←	←	←	←	←	←	28,400*	26,100*	28,400*	28,400*
	100.0	72.4	←	←	←	←	←	←	←	26,100*	24,100*	26,100*	26,100*
	110.0	70.5	←	←	←	←	←	←	←	24,100*	22,300*	24,100*	24,100*
	120.0	68.6	←	←	←	←	←	←	←	22,300*	20,500*	22,300*	22,300*
	130.0	66.6	←	←	←	←	←	←	←	20,500*	19,000*	20,500*	20,500*
	140.0	64.7	←	←	←	←	←	←	←	19,000*	17,500*	19,000*	19,000*
	150.0	62.7	←	←	←	←	←	←	←	17,500*	16,200*	17,500*	17,500*
	160.0	60.7	←	←	←	←	←	←	←	16,200*	15,100*	16,200*	16,200*
	170.0	58.6	←	←	←	←	←	←	←	15,100*	14,000*	15,100*	14,900
	180.0	56.5	←	←	←	←	←	←	←	14,000*	13,100*	14,000*	13,000
	190.0	54.3	←	←	←	←	←	←	←	13,100*	12,100*	13,100*	12,100
	200.0	52.0	←	←	←	←	←	←	←	12,100*	11,300	12,100*	11,300
	210.0	49.7	←	←	←	←	←	←	←	11,300	9,800	11,300	9,800
	220.0	47.3	←	←	←	←	←	←	←	10,200*	8,900*	10,200*	8,500
	230.0	44.9	←	←	←	←	←	←	←	8,900*	7,700*	8,900*	7,300
	240.0	42.3	←	←	←	←	←	←	←	6,600*	6,000*	6,600*	6,200
	250.0	39.5	←	←	←	←	←	←	←	5,500	5,600*	5,500	5,400
	260.0	36.6	←	←	←	←	←	←	←	4,700	4,700*	4,700	5,200
	270.0	33.5	←	←	←	←	←	←	←	3,900*	3,900*	3,900*	4,500
	280.0	30.1	←	←	←	←	←	←	←	3,100*	3,100*	3,100*	4,300
	290.0	26.3	←	←	←	←	←	←	←	2,300*	2,300*	2,300*	3,400
	300.0	21.9	←	←	←	←	←	←	←	--	--	--	2,600
	310.0	16.5	←	←	←	←	←	←	←	--	--	--	--
	320.0	8.1	←	←	←	←	←	←	←	--	--	--	--
	49.1	82.0	←	←	←	←	←	←	←	34,100*	34,100*	34,100*	34,100*
	50.0	81.8	←	←	←	←	←	←	←	34,100*	33,000*	34,100*	34,100*
	60.0	80.1	←	←	←	←	←	←	←	33,000*	30,600*	33,000*	30,600*
	70.0	78.3	←	←	←	←	←	←	←	30,600*	28,300*	30,600*	28,300*
	80.0	76.5	←	←	←	←	←	←	←	28,300*	26,000*	28,300*	26,000*
	90.0	74.7	←	←	←	←	←	←	←	26,000*	24,100*	26,000*	24,100*
	100.0	72.9	←	←	←	←	←	←	←	24,100*	22,100*	24,100*	22,100*
	110.0	71.1	←	←	←	←	←	←	←	22,100*	20,400*	22,100*	20,400*
	120.0	69.3	←	←	←	←	←	←	←	20,400*	18,800*	20,400*	18,800*
	130.0	67.4	←	←	←	←	←	←	←	18,800*	17,400*	18,800*	17,400*
	140.0	65.5	←	←	←	←	←	←	←	17,400*	16,100*	17,400*	16,100*
	150.0	63.6	←	←	←	←	←	←	←	16,100*	14,800*	16,100*	14,800*
	160.0	61.6	←	←	←	←	←	←	←	14,800*	13,700*	14,800*	13,700*
	170.0	59.6	←	←	←	←	←	←	←	13,700*	12,600	13,700*	12,600
	180.0	57.6	←	←	←	←	←	←	←	12,600*	11,800*	12,600*	10,900
	190.0	55.5	←	←	←	←	←	←	←	11,800*	11,100*	11,800*	9,400
	200.0	53.4	←	←	←	←	←	←	←	11,100*	10,300*	11,100*	8,100
	210.0	51.2	←	←	←	←	←	←	←	10,300*	--	10,300*	--

# HC-278H Lift Crane Capacities - On Outriggers

Boom Length (ft.)	Load Radius (ft.)	Boom Angle (degree)	Capacities - On Outriggers Over Rear					Capacities - On Outriggers 360 Degree Rotation						
			0 + 0	"A" + 0	"AB" + 0	"ABCD" + 0	"ABCD" + "A" ctwt.	0 + 0	"A" + 0	"AB" + 0	"ABCD" + 0	"ABCD" + "A" ctwt.		
			ctwt.	ctwt.	ctwt.	ctwt.	"AB" ctwt.	ctwt.	ctwt.	ctwt.	ctwt.	"AB" ctwt.		
	220.0	48.9	--	--	--	--	--	9,700*	--	--	--	--	--	6,900
	230.0	46.6	--	--	--	--	--	8,400*	--	--	--	--	--	5,800
	240.0	44.1	--	--	--	--	--	7,200*	--	--	--	--	--	4,800
	250.0	41.6	--	--	--	--	--	6,100*	--	--	--	--	--	3,900
	260.0	38.9	--	--	--	--	--	5,100*	--	--	--	--	--	3,000
330'	270.0	36.0	--	--	--	--	--	4,200*	--	--	--	--	--	2,200
(100.58 m)	280.0	33.0	--	--	--	--	--	3,400*	--	--	--	--	--	--
	290.0	29.6	--	--	--	--	--	2,600*	--	--	--	--	--	--
	300.0	25.9	--	--	--	--	--	--	--	--	--	--	--	--
	310.0	21.6	--	--	--	--	--	--	--	--	--	--	--	--
	320.0	16.2	--	--	--	--	--	--	--	--	--	--	--	--

# HC-278H Pick & Carry Capacities

Boom Length (ft.)	Load Radius (ft.)	Boom Angle (degree)	Capacities - On Tires					
			Straight Over Rear - 1 mph					
			0 + 0 ctwt.	"A" + 0 ctwt.	"AB" + 0 ctwt.	"ABCD" + "0" ctwt.	"ABCD" + "A" ctwt.	"ABCD" + "AB" ctwt.
60' (18.29 m)	12	81.5	92,300	138,000	142,300*	147,900*	↑	↑
	13	80.6	82,800	124,200	137,900*	143,400*		
	14	79.6	75,000	112,800	133,800*	139,100*		
	15	78.6	68,700	103,400	129,900*	135,000*		
	16	77.6	63,100	95,200	124,400	131,200*		
	17	76.7	58,300	88,200	115,400	127,500*		
	18	75.7	54,100	82,100	107,600	124,100*		
	19	74.7	50,400	76,700	100,700	120,800*		
	20	73.7	47,200	72,100	94,600	117,700*		
	25	68.7	35,300	54,600	72,200	100,300		
	30	63.4	27,700	43,400	57,800	80,800		
	35	58.0	22,400	35,900	47,900	67,500		
	40	52.1	18,500	30,200	40,600	57,600		
50	38.7	13,200	22,400	30,700	44,000			
60	18.7	9,600	17,200	24,100	35,200			
70' (21.34 m)	12.9	82.0	83,800	125,600	137,700*	143,100*	N/A	N/A
	13	81.9	83,000	124,400	137,300*	142,700*		
	14	81.1	75,200	113,000	133,200*	138,400*		
	15	80.3	68,800	103,600	129,300*	134,400*		
	16	79.4	63,300	95,400	124,500	130,600*		
	17	78.6	58,400	88,300	115,500	126,900*		
	18	77.8	54,200	82,200	107,700	123,500*		
	19	76.9	50,500	76,800	100,800	120,200*		
	20	76.1	47,300	72,200	94,600	117,100*		
	25	71.8	35,400	54,600	72,200	100,300		
	30	67.5	27,800	43,500	57,900	80,800		
	35	63.0	22,500	35,900	47,900	67,500		
	40	58.3	18,600	30,200	40,600	57,600		
50	48.0	13,200	22,400	30,700	44,000			
60	35.7	9,700	17,300	24,200	35,200			
70	17.3	7,200	13,600	19,500	28,900			
80' (24.38 m)	14.3	82.0	73,400	110,100	131,300*	136,500*	N/A	N/A
	15	81.5	68,900	103,600	128,600*	133,700*		
	16	80.8	63,300	95,400	124,500	129,900*		
	17	80.0	58,400	88,300	115,400	126,300*		
	18	79.3	54,200	82,200	107,700	122,800*		
	19	78.6	50,500	76,800	100,800	119,600*		
	20	77.9	47,200	72,200	94,600	116,500*		
	25	74.2	35,400	54,600	72,200	100,200		
	30	70.4	27,700	43,400	57,800	80,700		
	35	66.6	22,400	35,800	47,800	67,400		
	40	62.6	18,500	30,100	40,500	57,500		
	50	54.2	13,200	22,300	30,700	43,900		
	60	44.7	9,600	17,200	24,100	35,200		
70	33.3	7,100	13,600	19,500	28,900			
80	16.2	5,300	10,900	16,000	24,200			
90' (27.43 m)	15.7	82.0	66,300	99,100	125,900*	130,900*	↓	↓
	16	81.8	64,600	96,700	124,800*	129,800*		
	17	81.2	59,700	89,500	116,600	126,200*		
	18	80.5	55,400	83,300	108,800	122,700*		
	19	79.9	51,600	77,800	101,800	119,500*		
	20	79.2	48,200	73,100	95,600	116,300*		
	25	76.0	36,100	55,300	72,900	100,900		
	30	72.7	28,300	44,000	58,400	81,300		
	35	69.3	22,900	36,300	48,300	67,800		
	40	65.8	18,900	30,500	40,900	57,800		
	50	58.6	13,400	22,600	30,900	44,100		
	60	50.8	9,800	17,400	24,300	35,400		
	70	42.0	7,300	13,700	19,600	29,000		
80	31.4	5,400	11,000	16,100	24,300			
90	15.2	3,800	8,800	13,300	20,600			
100' (30.48 m)	17.1	82.0	59,200	88,800	115,700	125,100*	118,100*	--
	18	81.5	55,200	83,100	108,700	122,000*	115,100*	--

# HC-278H Pick & Carry Capacities

Boom Length (ft.)	Load Radius (ft.)	Boom Angle (degree)	Capacities - On Tires						
			Straight Over Rear - 1 mph						
			0 + 0 ctwt.	"A" + 0 ctwt.	"AB" + 0 ctwt.	"ABCD" + "0" ctwt.	"ABCD" + "A" ctwt.	"ABCD" + "AB" ctwt.	
100' (30.48 m)	19	80.9	51,400	77,600	101,600	118,700*	112,000*	↑	
	20	80.3	48,100	73,000	95,400	115,600*	109,300*		
	25	77.4	36,000	55,100	72,700	100,800	96,500*		
	30	74.4	28,200	43,800	58,200	81,000	86,200*		
	35	71.4	22,700	36,100	48,100	67,600	76,000		
	40	68.4	18,700	30,300	40,700	57,600	65,100		
	50	62.1	13,200	22,400	30,800	43,900	49,800		
	60	55.4	9,600	17,200	24,100	35,200	39,800		
	70	48.1	7,100	13,600	19,400	28,900	33,000		
	80	39.8	5,200	10,800	16,000	24,200	27,800		
	90	29.7	3,700	8,700	13,200	20,500	23,700		
100	14.5	2,500	7,000	11,000	17,600	20,400			
110' (33.53 m)	18.5	82.0	53,200	80,200	105,000	119,700*	112,900*	N/A	
	19	81.7	51,300	77,400	101,400	118,000*	111,600*		
	20	81.2	47,900	72,800	95,200	114,900*	108,600*		
	25	78.6	35,800	54,900	72,500	100,500	95,900*		
	30	75.9	28,000	43,600	58,000	80,800	85,500*		
	35	73.2	22,500	35,900	47,800	67,400	75,800		
	40	70.4	18,500	30,100	40,400	57,400	64,900		
	50	64.8	13,000	22,200	30,500	43,700	49,600		
	60	58.9	9,400	17,000	23,900	35,000	39,600		
	70	52.6	6,900	13,400	19,200	28,600	32,800		
	80	45.7	5,000	10,600	15,700	23,900	27,600		
	90	37.9	3,500	8,500	13,000	20,300	23,500		
100	28.3	2,300	6,800	10,900	17,400	20,300			
110	13.8	--	5,400	9,100	15,000	17,600			
120' (36.58 m)	19.9	82.0	↑	73,200	95,800	114,600*	108,300*	N/A	
	20	81.9		72,600	95,000	114,200*	107,900*		
	25	79.5		54,700	72,300	100,300	95,200*		
	30	77.1		43,300	57,700	80,500	84,900*		
	35	74.6		35,700	47,600	67,200	75,500		
	40	72.1		29,900	40,200	57,100	64,600		
	50	67.0		22,000	30,300	43,400	49,300		
	60	61.7		16,800	23,700	34,700	39,300		
	70	56.2		13,100	19,000	28,400	32,500		
	80	50.2		10,400	15,500	23,700	27,300		
	90	43.6		8,300	12,800	20,100	23,300		
	100	36.2		6,600	10,700	17,200	20,100		
	110	27.1		5,200	8,900	14,800	17,400		
120	13.2	4,000	7,400	12,800	15,200				
130' (39.62 m)	21.3	82.0	N/A	67,000	87,800	110,100*	103,700*	↓	
	25	80.3		54,500	72,100	100,000	94,500*		
	30	78.1		43,000	57,400	80,200	84,200*		
	35	75.8		35,400	47,300	66,900	75,200		
	40	73.5		29,600	39,900	56,800	64,300		
	50	68.9		21,700	30,000	43,100	49,000		
	60	64.1		16,500	23,400	34,400	39,000		
	70	59.1		12,800	18,700	28,100	32,300		
	80	53.8		10,100	15,200	23,400	27,000		
	90	48.1		8,000	12,500	19,800	23,000		
	100	41.9		6,300	10,400	16,900	19,800		
	110	34.7		5,000	8,600	14,600	17,200		
	120	26.0		3,800	7,200	12,600	15,000		
130	12.7	2,800	5,900	10,900	13,100				
140' (42.67 m)	22.7	82.0	↓	61,500	80,800	105,500*	99,400*	102,800*	
	25	81.0		54,200	71,800	99,600*	93,800*	97,000*	
	30	79.0		42,800	57,200	79,900	83,500*	86,400*	
	35	76.9		35,200	47,000	66,600	74,900	77,800*	
	40	74.7		29,400	39,600	56,500	64,000	70,800*	
	50	70.5		21,400	29,700	42,800	48,700	56,900	
	60	66.0		16,200	23,100	34,200	38,700	45,500	
	70	61.5		12,500	18,400	27,800	32,000	37,400	
	80	56.7		9,800	14,900	23,100	26,800	31,800	
	90	51.7		7,700	12,300	19,500	22,700	27,200	



# HC-278H Pick & Carry Capacities

Boom Length (ft.)	Load Radius (ft.)	Boom Angle (degree)	Capacities - On Tires						
			Straight Over Rear - 1 mph						
			0 + 0 ctwt.	"A" + 0 ctwt.	"AB" + 0 ctwt.	"ABCD" + "0" ctwt.	"ABCD" + "A" ctwt.	"ABCD" + "AB" ctwt.	
140' (42.67 m)	100	46.2	↑		6,100	10,100	16,600	19,500	23,500
	110	40.3		4,700	8,400	14,300	16,900	20,500	
	120	33.4		3,500	6,900	12,300	14,700	18,000	
	130	25.0		2,600	5,700	10,700	12,900	15,900	
	140	12.2		--	4,600	9,200	11,300	14,100	
150' (45.72 m)	24.0	82.0			56,700	74,700	101,200*	95,300*	98,500*
	25	81.6		53,900	71,500	98,900*	93,000*	96,300*	
	30	79.7		42,500	56,900	79,600	82,800*	85,700*	
	35	77.7		34,900	46,700	66,300	74,400*	77,100*	
	40	75.8		29,100	39,300	56,200	63,700	70,200*	
	50	71.8		21,100	29,400	42,500	48,400	56,600	
	60	67.7		15,900	22,800	33,900	38,400	45,100	
	70	63.5		12,200	18,100	27,500	31,700	37,100	
	80	59.2		9,500	14,600	22,800	26,500	31,500	
	90	54.6		7,400	11,900	19,200	22,400	26,900	
	100	49.8		5,800	9,800	16,300	19,200	23,200	
	110	44.6		4,400	8,100	14,000	16,600	20,200	
	120	38.8		3,300	6,600	12,000	14,400	17,700	
	130	32.3		2,300	5,400	10,400	12,600	15,600	
	140	24.2	--	4,400	9,000	11,000	13,800		
150	11.8	--	3,400	7,700	9,600	12,300			
160' (48.77 m)	25.4	82.0	N/A	--	69,700	97,000	91,300*	94,500*	
	30	80.3		--	56,600	79,300	82,100*	85,000*	
	35	78.5		--	46,400	66,000	74,100*	76,400*	
	40	76.7		--	39,000	55,900	63,400	69,500*	
	50	73.0		--	29,100	42,200	48,100	56,200	
	60	69.2		--	22,500	33,500	38,100	44,800	
	70	65.3		--	17,800	27,200	31,400	37,100	
	80	61.3		--	14,300	22,500	26,100	31,200	
	90	57.1		--	11,600	18,900	22,100	26,500	
	100	52.8		--	9,500	16,000	18,900	22,900	
	110	48.1		--	7,800	13,700	16,300	19,900	
	120	43.1		--	6,300	11,700	14,100	17,400	
	130	37.6		--	5,100	10,100	12,300	15,300	
	140	31.2		--	4,100	8,700	10,700	13,500	
150	23.4	--	3,200	7,500	9,400	12,000			
160	11.4	--	2,400	6,400	8,200	10,600			
170' (51.82 m)	26.8	82.0		--	64,900	90,600	87,600*	90,700*	
	30	80.9	--	56,300	79,000	81,400*	84,300*		
	35	79.2	--	46,100	65,700	73,500*	75,700*		
	40	77.5	--	38,600	55,600	63,100	68,900*		
	50	74.0	--	28,800	41,800	47,700	55,900		
	60	70.5	--	22,200	33,200	37,700	44,500		
	70	66.9	--	17,500	26,900	31,100	36,800		
	80	63.1	--	14,000	22,200	25,800	30,800		
	90	59.3	--	11,300	18,600	21,800	26,200		
	100	55.3	--	9,200	15,700	18,600	22,600		
	110	51.1	--	7,400	13,400	16,000	19,600		
	120	46.6	--	6,000	11,400	13,800	17,100		
	130	41.7	--	4,800	9,800	12,000	15,000		
	140	36.4	--	3,700	8,400	10,400	13,200		
150	30.3	--	2,800	7,200	9,100	11,700			
160	22.7	--	2,100	6,100	7,900	10,300			
170	11.1	--	--	5,200	6,800	9,100			
180' (54.86 m)	28.2	82.0		--	60,500	84,800	84,100*	87,100*	
	30	81.4	--	55,900	78,600	80,700*	83,600*		
	35	79.8	--	45,800	65,300	72,800*	75,000*		
	40	78.2	--	38,300	55,300	62,700	68,200*		
	50	74.9	--	28,500	41,500	47,400	55,600		
	60	71.6	--	21,900	32,900	37,400	44,100		
	70	68.2	--	17,200	26,600	30,700	36,500		
	80	64.7	--	13,700	21,900	25,500	30,500		
90	61.2		--	11,000	18,300	21,500	25,900		
100	57.5		--	8,900	15,400	18,300	22,200		

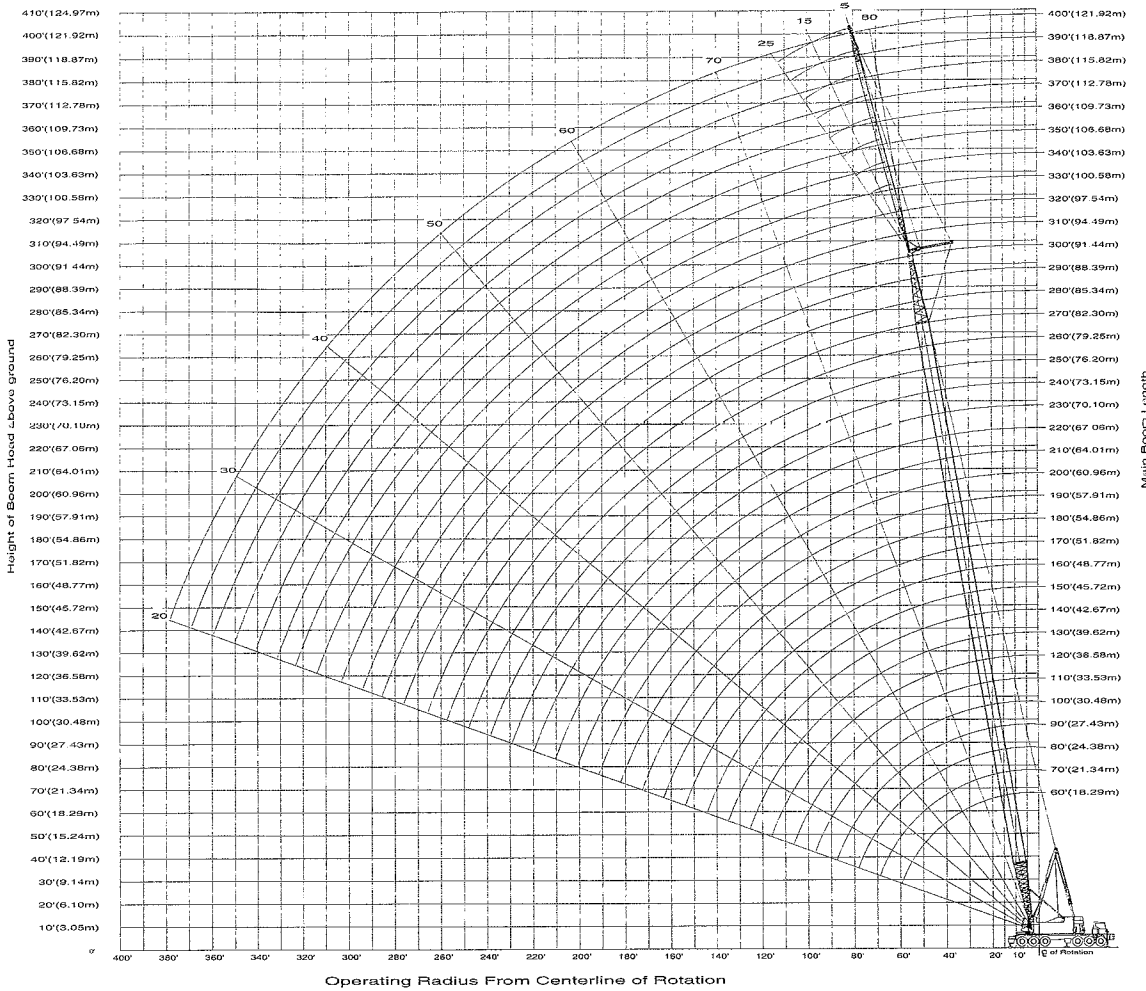
# HC-278H Pick & Carry Capacities

Boom Length (ft.)	Load Radius (ft.)	Boom Angle (degree)	Capacities - On Tires					
			Straight Over Rear - 1 mph					
			0 + 0 ctwt.	"A" + 0 ctwt.	"AB" + 0 ctwt.	"ABCD" + "0" ctwt.	"ABCD" + "A" ctwt.	"ABCD" + "AB" ctwt.
180' (54.86 m)	110	53.6	↑	↑	7,100	13,000	15,600	19,200
	120	49.5			5,700	11,100	13,500	16,800
	130	45.2			4,500	9,400	11,600	14,700
	140	40.5			3,400	8,000	10,100	12,900
	150	35.3			2,500	6,800	8,700	11,400
	160	29.4			--	5,800	7,600	10,000
	170	22.1			--	4,800	6,500	8,800
	180	10.8			--	4,000	5,600	7,800
190' (57.91 m)	29.6	82.0	↑	↑	79,600	80,700*	83,600*	
	30	81.9			78,300	80,000*	82,900*	
	35	80.4			65,000	72,100*	74,300*	
	40	78.8			54,900	62,400	67,600*	
	50	75.7			41,100	47,000	55,200	
	60	72.6			32,600	37,000	43,800	
	70	69.4			26,200	30,400	36,200	
	80	66.1			21,500	25,200	30,200	
	90	62.8			17,900	21,100	25,600	
	100	59.4			15,000	17,900	21,900	
	110	55.8			12,700	15,300	18,900	
	120	52.1			10,700	13,100	16,400	
	130	48.1			9,100	11,300	14,300	
	140	43.9			7,700	9,700	12,600	
200' (60.96 m)	31	82.0	N/A	N/A	74,800	77,500*	80,300*	
	35	80.8			64,700	71,400*	74,100*	
	40	79.4			54,600	62,100	66,900*	
	50	76.5			40,800	46,700	54,900	
	60	73.5			32,300	37,100	43,400	
	70	70.5			25,900	30,100	35,800	
	80	67.4			21,200	24,800	29,800	
	90	64.3			17,600	20,800	25,200	
	100	61.0			14,700	17,600	21,600	
	110	57.7			12,400	15,000	18,600	
	120	54.3			10,400	12,800	16,100	
	210' (64.01 m)	32.4			82.0	↓	↓	70,900
35		81.3	64,300	70,800*	73,400*			
40		79.9	54,200	61,700	66,200*			
50		77.1	40,400	46,300	54,500			
60		74.3	31,900	36,800	43,100			
70		71.4	25,600	29,700	35,500			
80		68.5	20,900	24,500	29,500			
90		65.6	17,200	20,400	24,900			
100		62.5	14,400	17,200	21,200			
110		59.4	12,000	14,600	18,200			
120		56.2	10,100	12,400	15,700			
130		52.8	8,400	10,600	13,700			
140	49.3	7,000	9,100	11,900				
150	45.6	5,800	7,700	10,300				
160	41.7	4,800	6,500	9,000				
170	37.4	3,800	5,500	7,800				
180	32.6	3,000	4,600	6,800				
190	27.2	2,300	3,800	5,800				

# HC-278H Pick & Carry Capacities

Boom Length (ft.)	Load Radius (ft.)	Boom Angle (degree)	Capacities - On Tires Straight Over Rear - 1 mph					
			0 + 0 ctwt.	"A" + 0 ctwt.	"AB" + 0 ctwt.	"ABCD" + "0" ctwt.	"ABCD" + "A" ctwt.	"ABCD" + "AB" ctwt.
210' (64.01 m)	200	20.4	--	--	--	--	3,000	5,000
	210	10.0	--	--	--	--	2,400	4,300
220' (67.06 m)	33.8	82.0	↑	↑	↑	↑	71,900*	74,100*
	35	81.7					70,100*	72,700*
	40	80.4					61,400	65,600*
	50	77.7					46,000	54,200
	60	75.0					36,500	42,700
	70	72.3					29,400	35,100
	80	69.6					24,100	29,200
	90	66.8					20,100	24,500
	100	63.9					16,900	20,900
	110	60.9					14,300	17,900
	120	57.9					12,100	15,400
	130	54.8					10,300	13,300
	140	51.5					8,700	11,500
	150	48.1					7,400	10,000
	160	44.5					6,200	8,600
	170	40.7					5,100	7,500
	180	36.5					4,200	6,400
190	31.9	3,400	5,500					
200	26.5	2,700	4,700					
210	19.9	N/A	N/A	N/A	N/A	--	3,900	
220	9.7	N/A	N/A	N/A	N/A	--	3,200	
230' (70.10 m)	35.2	82.0	↓	↓	↓	↓	69,100*	71,800*
	40	80.8					61,000	64,900*
	50	78.3					45,600	53,600*
	60	75.7					36,100	42,300
	70	73.1					29,100	34,800
	80	70.5					23,800	28,800
	90	67.8					19,800	24,200
	100	65.1					16,500	20,500
	110	62.3					13,900	17,500
	120	59.5					11,700	15,000
	130	56.5					9,900	13,000
	140	53.5					8,400	11,200
	150	50.3					7,000	9,600
	160	47.0					5,800	8,300
	170	43.5					4,800	7,100
	180	39.8					3,900	6,100
	190	35.7					3,100	5,100
200	31.2	2,300	4,300					
210	25.9	--	3,600					
220	19.5	--	2,900					
230	9.5	--	2,300					

# HC-278H Working Range and Lift Crane Notes



**General:**

1. This load represents the 10.4' (3.17 m) radius duty equivalent of the maximum available load moment.
2. 625,000 lb. (283 500 kg) at 12' (3.66 m) radius was the maximum static overload test performed per SAE J987.
3. Rated lifting capacities in pounds as shown on lift charts pertain to the crane as originally manufactured and normally equipped. Modifications to the crane or use of optional equipment other than that specified can result in a reduction of capacity.
4. Construction equipment can be dangerous if improperly operated or maintained. Operation and maintenance of the crane must be in compliance with the information in the Operator's, Parts and Safety Manuals supplied with the crane. If these manuals are missing, order replacements through the distributor.
5. The operator and other personnel associated with the crane shall read and fully understand the latest applicable American National Standards Institute (ANSI) safety standards for cranes.
6. The maximum allowable lifting capacities are based on crane standing level on firm supporting surface.

**Set-Up:**

1. The crane shall be leveled on a firm supporting surface. Depending on the nature of the supporting surface, it may be necessary to have structural supports under the pontoons to spread the load to a larger bearing surface.
2. For required parts of line, see wire rope strength and winch performance tables in Crane Rating Manual.

**Lift Crane Operation:**

1. Capacities shown are in pounds and are not more than 85% of the tipping loads on outriggers or 75% of the tipping loads on tires with the crane standing level on firm supporting surface. A deduction must be made from these capacities for weight of hook block, hook, sling, grapple, load weighing device, etc. When using main hook while jib is attached, reduce capacities by values shown in Crane Rating Manual. See Operator's Manual for all limitations when raising or lowering attachment.
2. The capacities marked with an asterisk (\*) are based on factors other than those which would cause a tipping condition.

3. For recommended reeving, parts of line, wire rope type and wire rope inspection, see wire rope strength chart, Operator's Manual and Parts Manual.
4. Load ratings are based on freely suspended loads and make no allowances for such factors as the effect of the wind, ground conditions, and operating speeds. The operator shall therefore reduce load ratings in order to take these conditions into account.
5. The 35' (10.67 m) live mast must be used for all capacities listed.
6. The least stable rated condition is over the side.
7. The jib cannot be used on a boom longer than 300' (91.44 m).
8. Maximum main boom length without jib is 330' (100.58 m).
9. Do not operate at radii and boom lengths where the Crane Rating Manual lists no capacity. Do not use longer booms or jibs than those listed in the Crane Rating Manual. Any of the above can cause a tipping condition, or boom and jib failure.
10. These capacities apply only to the crane as originally manufactured and normally equipped by Link-Belt Construction Equipment Company.