



RTG 80150
SERIES II

Rough Terrain Crane 150-ton | 135 mt

RTG 80130
SERIES II

Rough Terrain Crane 130-ton | 120 mt

RTG 80110
SERIES II

Rough Terrain Crane 110-ton | 100 mt

**The industry's most
innovative solution to big
rough terrain cranes
maneuverability and
transportability!**



- Revolutionary hydrostatic drive on a six-wheeled carrier for the ultimate in job site mobility
- Maneuverability redefined with over 45 tons (40.8 mt) of on-tire capacity
- Unprecedented transportability

RTG 80110
Rough Terrain Crane 110-ton | 100 mt

RTG 80130
Rough Terrain Crane 130-ton | 120 mt

RTG 80150
Rough Terrain Crane 150-ton | 135 mt



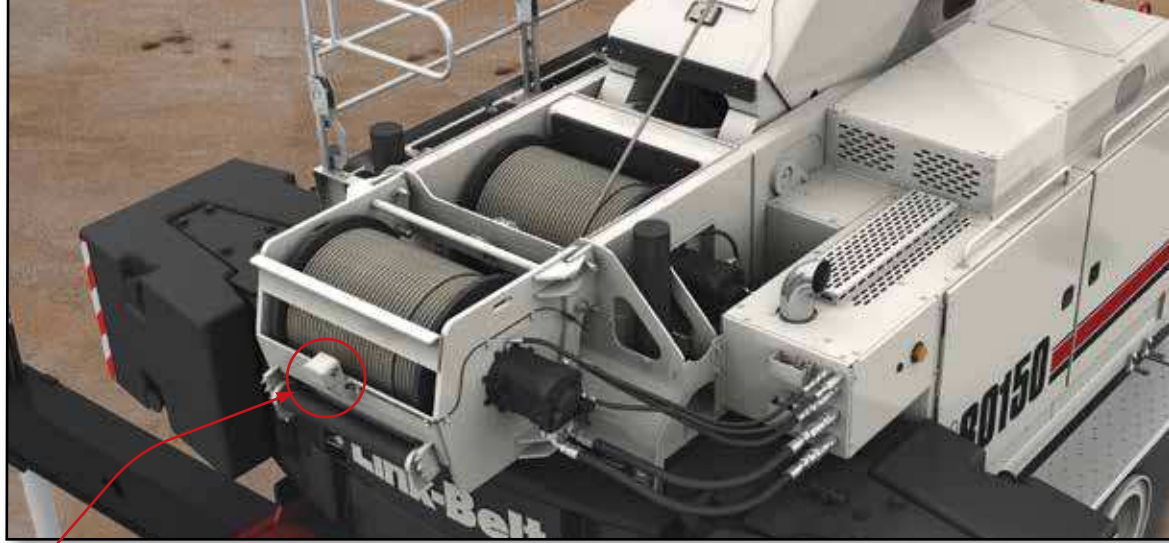
The Confined Area Lifting Capacities (CALC) system provides three outrigger positions:

- full retraction
- intermediate extension
- full extension

Outrigger pins eliminate guesswork by automatically positioning outriggers at midpoint position.

Powerful hydraulics

- Removable auxiliary (rear) winch has hydraulic quick disconnects
- For greater productivity and control, multiple pump hydraulic circuit allows simultaneous function
- Piston winch motor provides smooth and precise hoisting
- Main and available auxiliary winch are equally matched in size and performance
- Provisions for the future installation of the auxiliary winch are standard



Work platform & folding guard rails

Removable auxiliary winch with hydraulic disconnects

Winch viewing camera

Partial counterweight and zero counterweight charts



Folding catwalks on both sides of upper

6x2 and 6x6 drive with 23.5R25 tires

Total crane operating system

Link-Belt PULSE

Link-Belt Pulse is the Link-Belt designed total crane operating system. It includes the rated capacity limiter, boom extend mode controller (EMC), self-diagnostic capabilities and continuous monitoring of multiple crane functions and conditions. To aid operators in a safe and efficient operation, its high-resolution, color-intense graphic display provides excellent contrast even in direct sunlight.




Telematics. You own the data!

Cellular-based data logging and monitoring system that provides:

- Viewing options for sharing data with distributor and Link-Belt
- Location and operational settings
- Monitor routine maintenance intervals
- Crane and engine monitoring
- Diagnostic and fault codes





**The only greaseless,
high-capacity formed
booms designed and
built in North America!**

Innovative 10 ft (3.0m) fly is integral to one of the on-board fly options.

Over 25 tons (22.6 mt) capacity and one-load two-line lift procedures.

Manual offsets: 2°, 15°, 30°, 45°

Hydraulic offsets: 2°–45°
RTC-80130 II / RTC-80150 II only

No charted capacity deductions for telescoping loads

18 ft (5.48 m) lattice fly is interchangeable between models.



Lighting packages and flood lights available

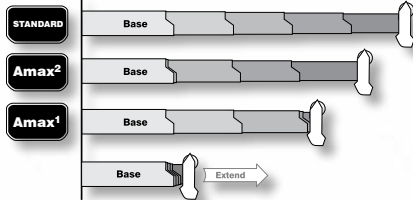


Quick reeve boom head eliminates the need to remove the bucket when it becomes necessary to change the reeving

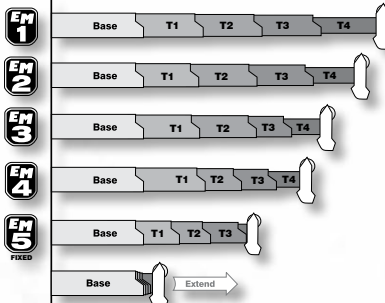
Superior capacities and extension ranges



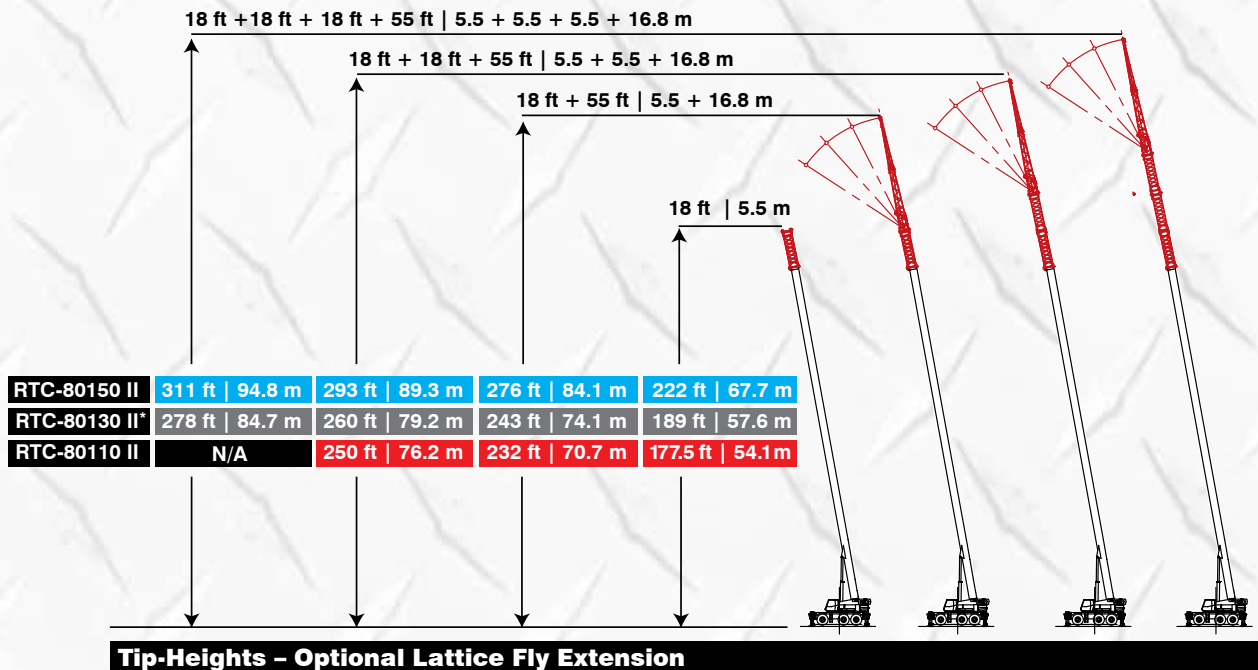
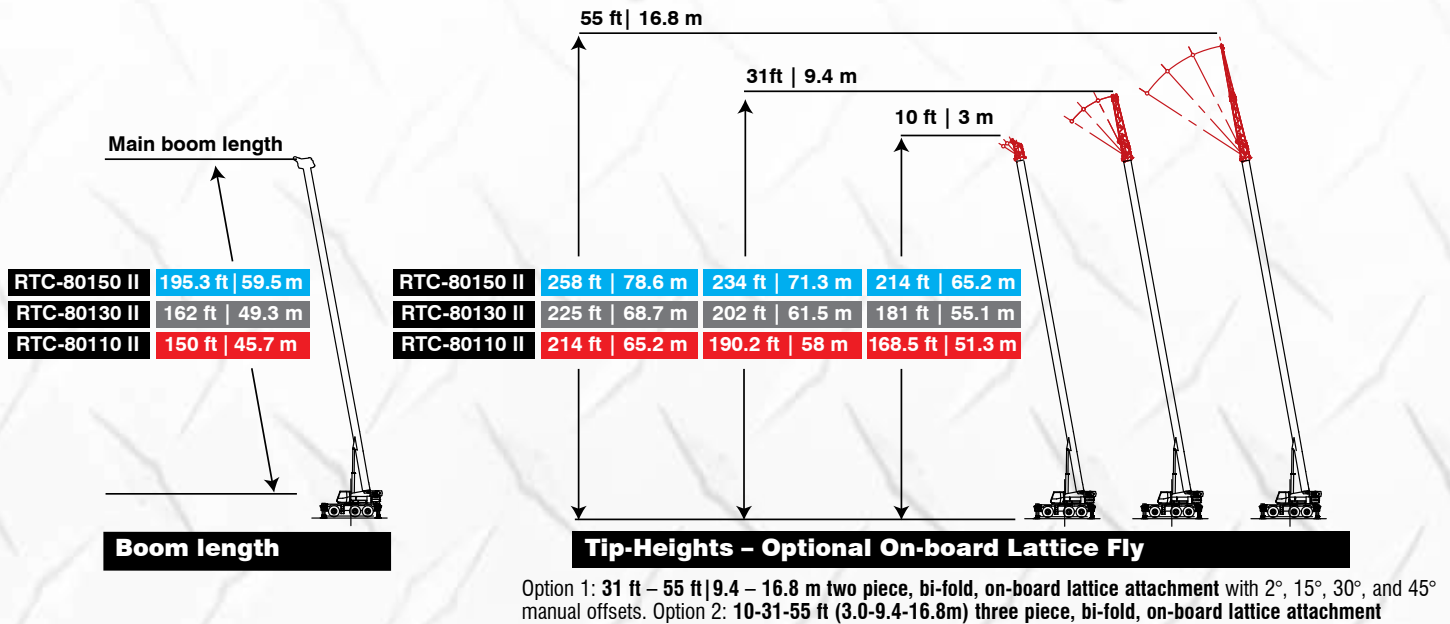
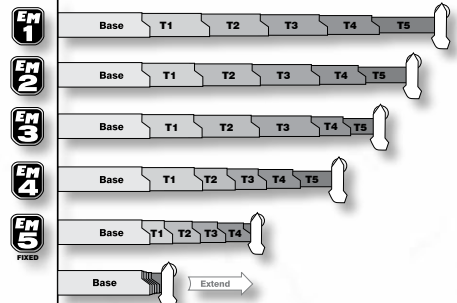
RTC 80110 SERIES Five section Full power boom



RTC 80130 SERIES Five section Latching boom



RTC 80150 SERIES Six section Latching boom



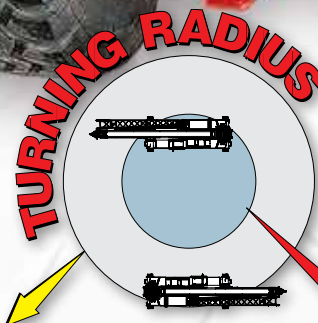
*The optional 55 ft (16.8m) two or three-piece offsettable bi-fold fly can be extended by adding up to three optional 18 ft (5.5 m) lattice inserts
Courtesy of Crane.Market



Revolutionary hydrostatic drive on a 6-wheel carrier

Not only are these cranes easy to get from jobsite to jobsite, they also have extraordinary creep control and jobsite maneuverability, thanks to their hydrostatic powered motors in each wheel. The smaller tires give them an overall height that is ideal for hauling, along with their individual six-wheel hydrostatic drive. There is no crane in the world, any size, that can come close to the job site maneuverability and performance of Link-Belt's large RTC Series II machines.

On the job, Link-Belt's large RTC Series II cranes have outstanding on-tire capacity coupled with a long reach, maneuverability, incredible gradeability and low height, making them truly an ideal solution for industrial sites.



2 wheel steer
<42 ft (12.8 m)

6 wheel steer
<22 ft (6.7 m)

Because of the innovative 6x6 hydrostatic drive/steer on each wheel, the turning radius of the 30' 2" (9.2 m) long carrier is a remarkable 21' 10" (6.66 m).

Independent front



Independent rear



Coordinated six wheel drive



Six wheel "crab"



Operator's cab provides ergonomic comfort and control

- **Extra large windows** throughout for excellent visibility
- **Excellent ventilation** via a large sliding door, side and rear windows, and hinged roof window
- **Single or dual axis, electronic operated controller** mounted on armrest for outstanding operator comfort
- **Tilting and Telescoping** steering column
- **6-way adjustable power tilting seat**
- All gauges, switches, indicators, and controls are located in the **operator's forward line of sight**
- All gauges and switches are backlit for **excellent visibility in low light conditions**
- **Winch and right side swing view cameras**
- In cab comfort is maintained by the **standard heater and air conditioning**
- **Cab mounted amber strobe light**
- **Internal and external rated capacity limiter light bars**
- Available - **External rated capacity limiter light bars**
- Available - **LED working light on top of cab**



Swing-out doors provide exceptional access to engine components.



Designed for easy access and service

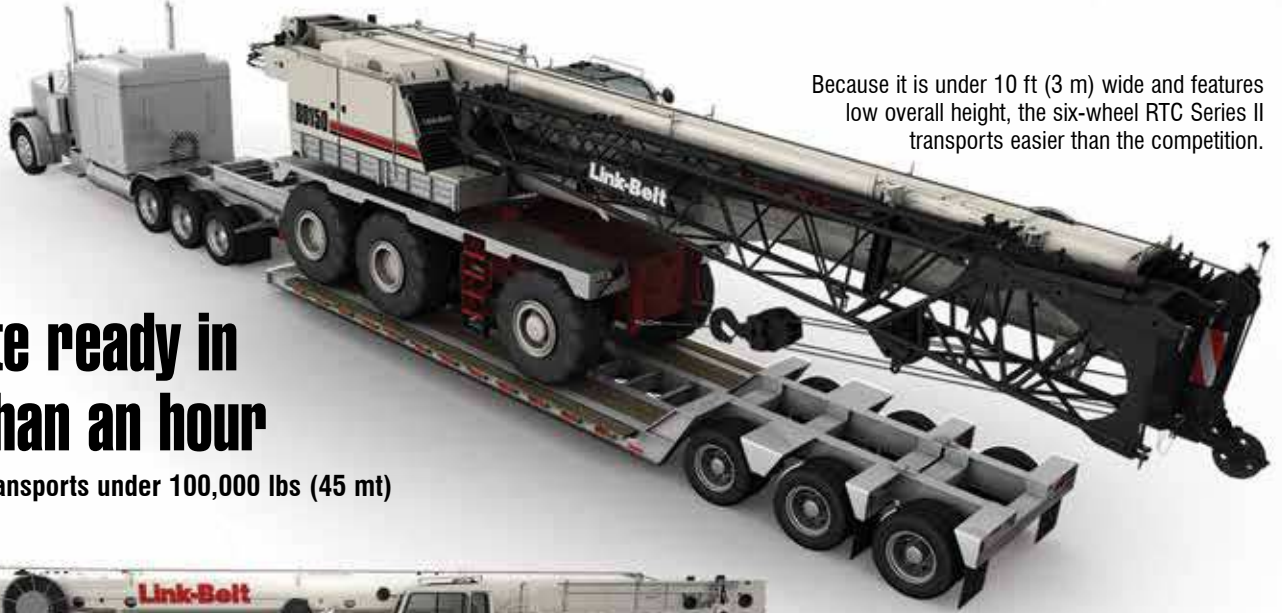
Access is superb with strategically-located ladders, steps, catwalks and CabWalk.



Because it is under 10 ft (3 m) wide and features low overall height, the six-wheel RTC Series II transports easier than the competition.

Jobsite ready in less than an hour

Main unit transports under 100,000 lbs (45 mt)



Unlike other big RT's, boom and tires do not need to be removed. Therefore, the six-wheel RTC Series II is ready to be driven off the transport trailer and begin self-assembly.



The RTC installs its own counterweight and outrigger boxes to be jobsite ready.



In less than an hour and without a helper crane, the six-wheel Rough Terrain Crane Series II cranes are ready for work.



Link-Belt
CRANES
Lexington, Kentucky | www.linkbelt.com

© Link-Belt is a registered trademark
Copyright 2014 All rights reserved.
We reserve the right to change
designs and specifications at any time.
Litho in U.S.A 12/14 #4511

Courtesy of CraneMarket