

238

HSL SERIES

150 ton (137 mt) Lattice Crawler Crane

- Tier 4i Isuzu power 282hp (210 kw) (high sulphur version available)
- Standard freefall wet brake winches with automatic mode, 26mm wire rope front & rear
- 30 ton (27.2 mt) jib
- Hook and pin side frames
- HSL-style operator's cab
- Modular counterweight design
- Range control
- Upper guard rails
- Rear view camera with color monitor
- Bullet-proof hydraulic pilot-operated controls
- BIG capacities
- Luffer-ready



Link-Belt
CRANES

238 HYLAR B HSL SERIES

150 ton (99.97 mt) Lattice Boom Crawler Crane

- Transport complete crane with base section and optional 10 ft (3.05 m) rigging insert, less sideframes and counterweight under 90,000 lbs (40 823 kg)
- 7-piece counterweight system design with innovative removal system
- Latest rated capacity limiter with color graphics
- Power-up/down with auto brake OR freefall
- Superior capacities

Checklist

- ✓ Upper guardrail
- ✓ Rear view camera
- ✓ Travel and swing alarm
- ✓ Cat walks
- ✓ Optional winch view camera

Counterweight "biscuit" design allows for various configuration options and easy transport

Audio visual swing alarm

Non-slip safety strips, full-length catwalks and sideframe steps provide sure-footed access to the crane upper

Compact, high torque final drive with multi-speed travel

Hook and pin side frames

Rope guards and polyamide sheaves
Sealed boom hoist bearings in mast and ball

Remote-control operated hydraulic counterweight removal cylinders

Redundant limit switcher

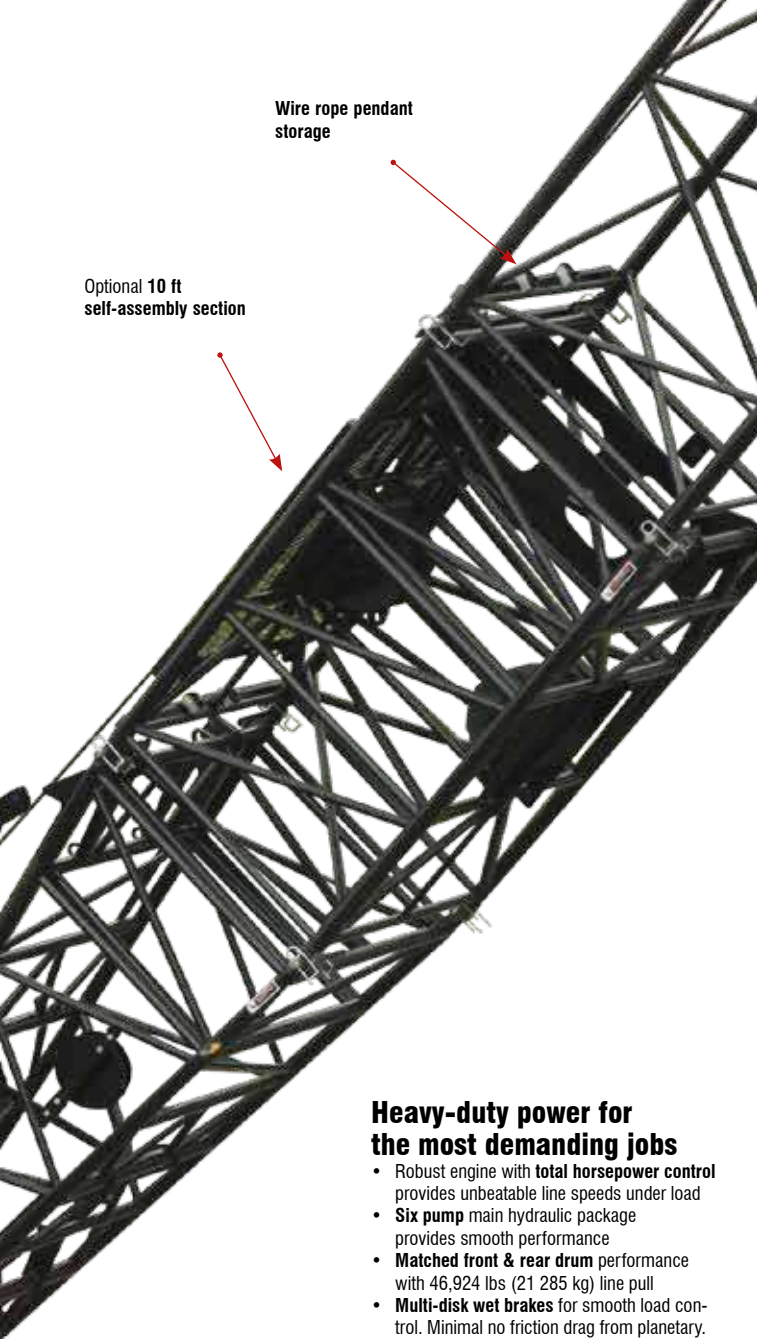
Spring-loaded backstops

Extra protection for backstop over-hoist

Great clearance

Carbody jacks with live hydraulics - standard

No lower counterweight to assemble or transport



Wire rope pendant storage

Optional 10 ft self-assembly section

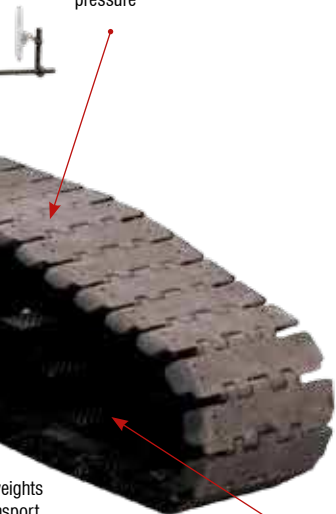


Excellent access for all routine engine and hydraulic maintenance

Heavy-duty power for the most demanding jobs

- Robust engine with **total horsepower control** provides unbeatable line speeds under load
- **Six pump** main hydraulic package provides smooth performance
- **Matched front & rear drum** performance with 46,924 lbs (21 285 kg) line pull
- **Multi-disk wet brakes** for smooth load control. Minimal no friction drag from planetary.
- **26 mm rope** on front and rear hoists with automatic pawl and grooved lagging
- **True gravity freefall** for cycle-type work, pile driving
- **Dual swing drives** provide smooth swing control
- **High travel torque**

Full contact 44" (1.12m) track shoes designed for maximum contact area minimizes ground bearing pressure



weights support

Options include:

- **Third drum** features with controlled free spooling capability for pile driving applications or power up/down as auxiliary hoist line
- **Third drum power-up/power-down** with auto-brake provides auxiliary 3rd line for conventional and luffer use

Completely **sealed lower, sealed (oil-filled) track rollers**, and drive planetaries and compact hydrostatic drives add up to outstanding reliability and near-maintenance-free operation.



Courtesy of CraneMarket



HSL capacity limiter with high visibility color graphic display

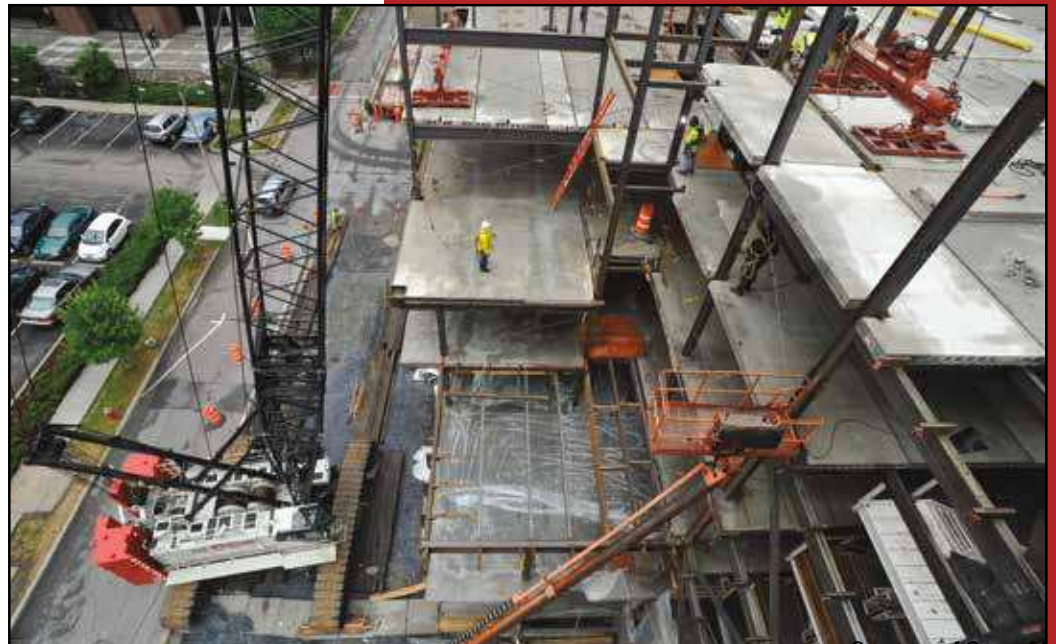
Awesome air, comfort & control at your fingertips

The spacious HYLAB cab is ergonomically designed for maximum visibility, operating comfort and control with these standard feature:

- 18,000 BTU air conditioning and 19,000 BTU heating run through upper and lower vents
- Rating capacity limiter with load cell located in boom hoisted dead end
- Pilot-operated armchair controls with adjustable sliding console
- Foot throttle pedal
- Travel levers conveniently located on right hand console

Operator's cab console features include:

- Complete engine monitoring
- Rear view monitoring
- Free-fall mode indicator
- Anti-two block override switch
- Boom hoist override switch
- Limit alarm indicator light
- System override switch and indicator light
- Front, rear and third drum lock switch



Available attachments provide strength and versatility

Conventional open throat boom

- 260 ft (79.25 m) conventional boom
 - 70" x 62" (1.78 x 1.57 m) in-line pin-connected tube boom attachment and open throat top section
- Main chord members are made with 100,000 psi yield material with high strength lattice.
- Wire rope pendants stow with boom connecting pins on each extension for ease of transport.
- Boom suspension is achieved through 14-part boom hoist reeving.
- Standard equipment wear blocks protect lattice sections from wire rope scuffing.

Auxiliary 5 ft (1.5 m) tip extension

- Optional — designed to provide clearance between two working hoist lines

Fixed jib

- 30 ft to 80 ft (9.14 - 24.38m)
- Offset angles at 5°, 15° and 25°

238 boom options



Boom and jib — open throat

- 230 ft + 80 ft (70.10 + 24.38 m) tube boom + fixed jib
- 313 ft (95.40 m) maximum tip height

Luffing attachment

- 27 ton (24.5 mt) capacity, 345 ft (105.16 m) luffing attachment with 360° capacities, utilizing conventional boom for luffing boom
- 85 ft to 165 ft (25.91 m to 50.29 m) luffing boom
- 80 ft to 160 ft (24.38 m to 48.77 m) luffing jib
- Maximum combination: 165 ft + 160 ft (50.29 m + 48.77 m)

All boom sections are manufactured in Lexington, Kentucky for fast, accessible, easy service, parts and replacement.



Double-tapered boom pin with pin catcher



The boom top section features polyamide sheaves and standard pin-on points for attachment of options such as a fixed jib, tip extension and adapters for universal pile driving leads with quick reeve ability.

In-line boom suspension load cell, standard with anti-two block system for both front and rear drum





Transports with base section & 10 ft insert — start lifting immediately!

- Transports with base section and optional 10 ft (3.05 m) rigging insert
- 15,000 lb (6 804 kg) biscuit-style counterweight maximizes transportability
- Simple counterweight removal system lowers counterweights all the way to the ground
- Carbody jacks are plumbed live — no need to disconnect
- Three-legged lift sling handles counterweight and crawlers
- 238 HSL moves in 7 loads with full boom, jib and counterweight
- Self-assembly and disassembly (no helper crane required)



Link-Belt
CRANES

Lexington, Kentucky
www.linkbelt.com

© Link-Belt is a registered trademark. Copyright 2012. All rights reserved. We are constantly improving our products and therefore reserve the right to change designs and specifications.

Litho in U.S.A. 5/13 #4396

TRANSPORTATION WEIGHTS

Main transport load	86,000 lbs (39 009 kg)
"A" counterweight	20,000 lbs (9 072 kg)
Cheek weights	6 @ 15,000 lbs (6 804 kg)
Total counterweights	110,000 lbs (49 895 kg)
Side frames	2 @ 35,000 lbs (15 876 kg)