

MILITARY FORKLIFTS



LET LIFTKING DO THE HEAVY LIFTING

If your success depends on the efficient and effective lifting of heavy loads in rough terrain, you can count on the complete line of Liftking military forklifts to perform above and beyond the call of duty. Thousands of our units are doing the heavy lifting right now for the National Militaries of the United States, Canada, Great Britain, Australia, China, Saudi Arabia, Qatar, Oman, UAE, Chile, South Korea, Malaysia, and the United Nations. These vehicles range from small shipboard-approved forklifts to the largest articulating rough terrain forklift in the world. We can supply units to meet Military, NATO, ANSI or STANAG requirements.

The Features You Need

Liftking military forklifts are loaded with innovative features to meet strict military standards and perform in any environment.

- our patented hydraulically-removable counterweight permits transportability in C-130 and C-5 aircraft without exceeding load limits
- the detachable mast and two-piece operator's cab on some of our vehicles facilitates disassembly to satisfy height restrictions during road or rail transportation
- our shipboard units can be built to withstand Sea State 5 conditions and 50G of force
- units can be designed to meet stringent EMI guidelines to ensure protection of sensitive equipment on board ships and aircraft
- the water-fording capability of some units permits continuous operation in water depths of up to 5 feet (1.5 meters)

Options:

- Air conditioning • Digital weigh scale • Automatic fire suppression system • Automatic central greasing system
- Blackout lighting system • 12V/24V electrical system • Nitrided cylinder rods • Cold weather package
- Solar charging system • Remote locks with alarm • CCTV camera • CARC paint • Selection of mast, carriage and fork styles • Contact factory for other options.

Commitment to Service

Our priority will always be to keep your Liftking equipment operating at peak performance, even in the most hostile environments.

With more than 170 dealer locations around the globe, our online database, and our technicians on standby; we provide 24/7 parts and service support.

We mandate comprehensive operation, maintenance and service training at both our location and at our customer locations.

Rebuild and Restore Services

Our dedicated Rebuild and Restore dept. can bring your used Liftking forklift to better-than-new condition. By incorporating design revisions and componentry upgrades to the rebuild, your equipment will be once again at the forefront of technology and ready to provide many more years of dependable service.

BATTLE TESTED FOR QUALITY AND PROVEN RELIABILITY

Utilizing over 45 years of expertise in designing, developing, and manufacturing material handling equipment, all of our forklifts are built rugged and reliable to exacting military standards following the strictest of quality controls according to ISO 9001. First Article Testing (FAT) of our models begins on our military-approved endurance track located adjacent to our manufacturing facility, allowing for real-time evaluation. Depending on the intended theater of operations, FAT may include NAVSEA approved Shock Testing, Electromagnetic Interference (EMI), Salt Fog and Environmental Chamber, DS Safety Rating, Capacity and Structure Overload, Water Fording, and Tractive Effort. Up to 500 hours of continuous (24/7) Endurance and Obstacle testing may also be a requirement to meet all specifications.





LK67C | Diesel, 4WD, Articulating

The LK67C is the largest 4WD articulating container handler in the world. Full electronic controls and redundant safety systems ensure maximum productivity.

	Imperial	Metric
Capacity at 48 in (1220 mm) LC	67,000 lbs	30,390 kg
Lift Height	217 in	5,500 mm
Length (less forks)	333 in	8,460 mm
Width	140 in	3,560 mm
Height	135 in	3,430 mm
Weight	140,000 lbs	63,483 kg



LK50C | Diesel, 4WD, Articulating

The LK50C, with hydraulic spreader or fixed handler, can stack containers 3-high and has water-fording capability of up to 5 ft. (1.5 m).

	Imperial	Metric
Capacity at 48 in (1220 mm) LC	55,000 lbs	25,000 kg
Lift Height	116 in	2,947 mm
Length (less forks)	318in	8,080 mm
Width	134 in	3,400 mm
Height	134 in	3,400 mm
Weight	117,000 lbs	53,182 kg



LK35C | Diesel, 4WD, Articulating

The LK35C employs a compact design that enhances maneuverability and efficiency. Full electronic controls ease operation and increase comfort.

	Imperial	Metric
Capacity at 48 in (1220 mm) LC	35,000 lbs	15,875 kg
Lift Height	221in	5,610 mm
Length (less forks)	288 in	7,315 mm
Width	124 in	3,150 mm
Height	1318 in	3,330 mm
Weight	61,160 lbs	27,740 kg



LK20C | Diesel, 4WD, 4WS

The LK20C is a rugged air transportable forklift with a hydraulic spreader or fixed handler and water-fording capability of up to 5 ft. (1.5 m).

	Imperial	Metric
Capacity at 48 in (1220 mm) LC	20,000 lbs	9,091 kg
Lift Height	215 in	5,461 mm
Length (less forks)	260 in	6,604 mm
Width	120 in	3,073 mm
Height	121 in	3,073 mm
Weight	43,000 lbs	19,454 kg



Hydraulically Removable Counterweight



Frame and Handler Sway

LK25P44 | Flip Cab, Diesel, 4WD, 4WS



The LK25P44 has a fork conveyor attachment and raised 2-piece cab for enhanced visibility that flips down to facilitate air transport.

	Imperial	Metric
Capacity at 48 in (1220 mm) LC	25,000 lbs	11,363 kg
Lift Height	130 in	3,302 mm
Length (less forks)	238 in	6,045 mm
Width	101 in	2,565 mm
Height	127 in	3,226 mm
Weight	40,000 lbs	18,182 kg

LK10MT | Diesel, 4WD, 4WS, DS Rated



Wrap-around cab design offers excellent visibility. Frame sway and water-fording of up to 3 ft. (1 m) allows operation in the most adverse conditions.

	Imperial	Metric
Capacity at 48 in (1220 mm) LC	22,000 lbs	10,000kg
Lift Height	120 in	3,048mm
Length (less forks)	238 in	6,045 mm
Width	103 in	2,613 mm
Height	112 in	2,845 mm
Weight	41,000 lbs	18,636 kg

LK16000 | Diesel, 4WD, 4WS, DS Rated



Hydraulically removable counterweight allows for quick conversion to air-transportability mode. Low profile cab and mast provide clearance in aircraft.

	Imperial	Metric
Capacity at 48 in (1220 mm) LC	16,000 lbs	7,255 kg
Lift Height	120 in	3,048 mm
Length (less forks)	223 in	5,664 mm
Width	101 in	2,565 mm
Height	95 in	2,413 mm
Weight	31,180 lbs	14,173 kg

LKAF16 | Diesel, 4WD, 4WS, DS Rated



The LKAF16 has a hydraulically removable counterweight allowing for air transportability. The low profile hood design offers excellent visibility.

	Imperial	Metric
Capacity at 48 in (1220 mm) LC	16,000 lbs	7,255 kg
Lift Height	120 in	3,050 mm
Length (less forks)	243 in	6,170 mm
Width	101 in	2,565 mm
Height	103 in	2,615 mm
Weight	28,160 lbs	12,775 kg

LKCAN10 | Diesel, 4WD, 4WS, DS Rated



Low profile cab and mast for access in tight quarters. Fork conveyor attachments allow for easy transfer of palletized loads.

	Imperial	Metric
Capacity at 48 in (1220 mm) LC	10,000 lbs	4,545 kg
Lift Height	120 in	3,048 mm
Length (less forks)	204 in	5,180 mm
Width	96 in	2,440 mm
Height	91 in	2,310 mm
Weight	21,640 lbs	9,815 kg

LKUSN6 | Diesel, 4WD, 4WS, DS Rated



The LKUSN6's compact, low profile design makes it easy to transport by air, and it has ISO container de-stuffing capability.

	Imperial	Metric
Capacity at 24 in (610 mm) LC	6,000 lbs	2,727 kg
Lift Height	155 in	3,937 mm
Length (less forks)	195 in	4,953 mm
Width	80 in	2,032 mm
Height	85 in	2,159 mm
Weight	13,150 lbs	5,977 kg

LK67C | Diesel, 4WD, Articulating
30,000 – 67,000 lbs (13,610 – 30,390 kg)



The LK67C is the largest 4WD articulating forklift in the world. Full electronic controls and redundant safety systems ensure maximum productivity.

	Imperial	Metric
Capacity at 48 in (1220 mm) LC	67,000 lbs	30,390 kg
Lift Height (with forks)	134 in	3,400 mm
Length (less forks)	333 in	8,460 mm
Width	140 in	3,560 mm
Height	135 in	3,430 mm
Weight (with forks)	127,700 lbs	57,925 kg

LK15T | Diesel, 4WD, 4WS
20,000 – 33,000 lbs (9,070 – 15,000 kg)



3 cab style options (low, mid, high) allows customer to choose between low profile accessibility and high profile visibility and comfort.

	Imperial	Metric
Capacity at 24 in (610 mm) LC	33,000 lbs	15,000 kg
Lift Height	180 in	4,570 mm
Length (less forks)	250 in	6,350 mm
Width	100 in	2,540 mm
Height	107 in	2,720 mm
Weight	45,240 lbs	20,520 kg

LK16M42 | Diesel, 4WD, 4WS
6,000 – 20,000 lbs (2,720 – 9,070 kg)



Multitude of mast and carriage options offer high versatility to suit any application. Spacious cabin with split doors emphasize operator comfort.

	Imperial	Metric
Capacity at 24 in (610 mm) LC	16,000 lbs	7,265 kg
Lift Height	168 in	4,270 mm
Length (less forks)	179 in	4,550 mm
Width	98 in	2,490 mm
Height	100 in	2,540 mm
Weight	22,000 lbs	9,990 kg

LK10P44 | Diesel, 4WD, 4WS, DS Rated
6,000 – 16,000 lbs (2,720 – 7,265 kg)



The LK10P44 is a compact air transportable forklift with an open cab, engineered for rough terrain and water-fording of up to 3 ft. (1 m).

	Imperial	Metric
Capacity at 24 in (610 mm) LC	10,000 lbs	4,545 kg
Lift Height	168 in	4,270 mm
Length (less forks)	161 in	4,090 mm
Width	88 in	2,235 mm
Height	110 in	2,795 mm
Weight	17,260 lbs	7,830 kg

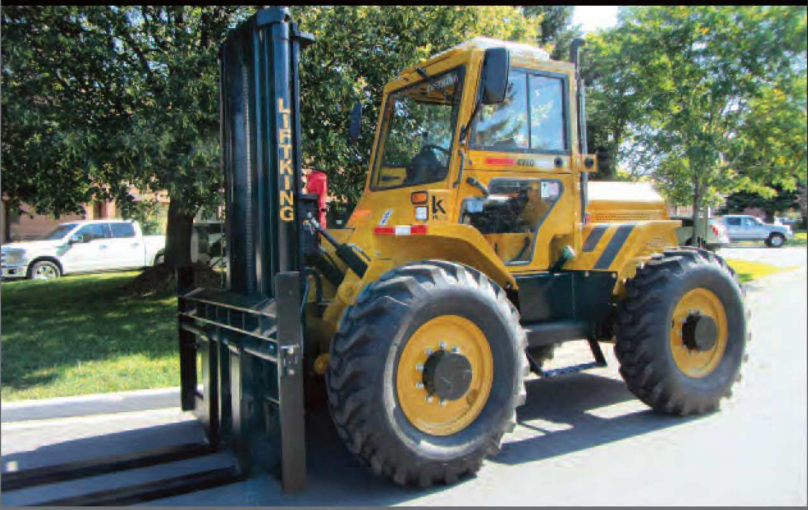
LK8C | Diesel, 4WD, 4WS, DS Rated
4,000 – 12,000 lbs (1,815 – 5,445 kg)



Compact dimensions and low profile design offers maximum versatility and capability in tight quarters. Tight turning radius enhances maneuverability.

	Imperial	Metric
Capacity at 24 in (610 mm) LC	8,000 lbs	3,630 kg
Lift Height	100 in	2,540 mm
Length (less forks)	156 in	3,960 mm
Width	80 in	2,030 mm
Height	80 in	2,030 mm
Weight	12,120 lbs	5,500 kg

LK6P44 | Diesel, 4WD, 4WS
6,000 – 16,000 lbs (2,720 – 7,265 kg)



A workhorse in any application, the LK6P44 is available with a large variety of masts, carriages, and attachments to fulfil any job quickly.

	Imperial	Metric
Capacity at 24 in (610 mm) LC	6,000 lbs	2,720 kg
Lift Height	168 in	4,270 mm
Length (less forks)	155 in	3,940 mm
Width	88 in	2,235 mm
Height	110 in	2,795 mm
Weight	13,520 lbs	6,135 kg



LK150R | Traversing Telescopic Boom

Traversing boom allows precise, incremental placement of load. 4WD and 4WS offer maximum maneuverability.

	Imperial	Metric
Capacity at 24 in (610 mm) LC	15,000 lbs	6,800 kg
Lift Height	207in	5,260 mm
Length (less forks)	253 in	6,425 mm
Width	101 in	2,565 mm
Height	103 in	2,615 mm
Weight	29,600 lbs	13,425 kg



LKSB10K | Fixed Boom, 4WD, 4WS

Open cab provides 360 degree visibility. Frame sway and water-fording of up to 5 ft. (1.5 m) allows operation in all terrain types.

	Imperial	Metric
Capacity at 48 in (1220 mm) LC	10,000 lbs	4,535 kg
Lift Height	120 in	3,050 mm
Length (less forks)	218 in	5,540 mm
Width	96 in	2,440 mm
Height	118 in	3,000 mm
Weight	26,800 lbs	12,155 kg



LK934 | Telescopic Boom, 4WD, 4WS

High-mount boom allows maximum visibility when carrying loads. Centrally placed engine offers maximum stability and traction over rough terrain.

	Imperial	Metric
Capacity at 24 in (610 mm) LC	8,820 lbs	4,000 kg
Lift Height	394 in	10,000 mm
Length (less forks)	195 in	4,950 mm
Width	100 in	2,540 mm
Height	102 in	2,600 mm
Weight	28,530 lbs	12,940 kg



LKSB6K | Fixed Boom, 4WD, 4WS

High seating position and no front overhang provides excellent visibility of loads. The LKSB6K also offers water-fording of up to 5 ft. (1.5 m).

	Imperial	Metric
Capacity at 24 in (610 mm) LC	6,000 lbs	2,720 kg
Lift Height	120 in	3,050 mm
Length (less forks)	210 in	5,335 mm
Width	96 in	2,440 mm
Height	118 in	3,000 mm
Weight	18,000 lbs	8,340 kg



LK20SCB | Dual Front Tires, 2WD, 2WS



Designed for effective operation on flight decks and other improved surfaces. Tight turning radius improves maneuverability.

	Imperial	Metric
Capacity at 24 in (610 mm) LC	20,000 lbs	9,070 kg
Lift Height	220 in	5,590 mm
Length (less forks)	186 in	4,725 mm
Width	97 in	2,465 mm
Height	92 in	2,335 mm
Weight	31,000 lbs	14,060 kg

LKUSN10 | Diesel, 4WD, 4WS, DS Rated



Compact design with a short wheelbase and automatic transmission provides simple operation with maximum control.

	Imperial	Metric
Capacity at 48 in (1220 mm) LC	10,000 lbs	4,535 kg
Lift Height	120 in	3,050 mm
Length (less forks)	147 in	3,735 mm
Width	96 in	2,438 mm
Height	91 in	2,310 mm
Weight	28,820 lbs	12,620 kg

LKSB10K | Fixed Boom, 4WD, 4WS



The LKSB10K has been High Shock and EMI tested for use on ships, and provides 360 degree visibility and water-fording of up to 5 ft. (1.5 m).

	Imperial	Metric
Capacity at 48 in (1220 mm) LC	10,000 lbs	4,535 kg
Lift Height	120 in	3,050 mm
Length (less forks)	218in	5,540 mm
Width	96 in	2,440 mm
Height	118 in	3,000 mm
Weight	27,800,lbs	12,155 kg

LKSB6K | Fixed Boom, 4WD, 4WS, DS Safety Rated



The LKSB6K Shipboard approved and DS Safety Rated, and also offers water-fording of up to 5 ft. (1.5 m).

	Imperial	Metric
Capacity at 24 in (610 mm) LC	6,000 lbs	2,720 kg
Lift Height	120 in	3,050 mm
Length (less forks)	210 in	5,335 mm
Width	96 in	2,440 mm
Height	91 in	2,310 mm
Weight	27,820 lbs	12,620 kg

LK6SLP | Diesel, Low Profile, 2WD, 2WS



Safety is paramount with the LK6SLP by incorporating 4-wheel brakes, Hi Shock and EMI Certification, and DS Safety rating.

	Imperial	Metric
Capacity at 24 in (610 mm) LC	6,000 lbs	2,727 kg
Lift Height	142 in	3,607 mm
Length (less forks)	103 in	2,616 mm
Width	60 in	1,524 mm
Height	68 in	1,727 mm
Weight	11,000 lbs	5,000 kg

LKUSN4 | Diesel, 4WD, 4WS, DS Rated



The LKUSN4 is sized to allow access inside ISO containers, as well as provide maximum maneuverability. It is towable at highway speeds.

	Imperial	Metric
Capacity at 24 in (610 mm) LC	4,000 lbs	1,815 kg
Lift Height	100 in	2,540 mm
Length (less forks)	156 in	3,960 mm
Width	80 in	2,030 mm
Height	80 in	2,030 mm
Weight	11,200 lbs	5,080 kg

STRONG & DEPENDABLE, JUST LIKE OUR FORKLIFTS.



Contact Liftking for models not shown, or custom design requirements.



Toronto, Canada Tel: 905-265-3965 Fax: 905-851-6396
Website: www.liftking.com Email: info@liftking.com



Your Military Handling Solution - Worldwide



Liftking is ISO 9001:2008 registered (EN ISO 9001:2008; BS EN ISO 9001:2008; ANSI/ASQ Q9001:2008)

