

OG M Series | 10M | 12M | 16M | 20M

**LIFTKING**  
Manufacturing Corp.

OIL & GAS INDUSTRY



Courtesy of Crane.Market

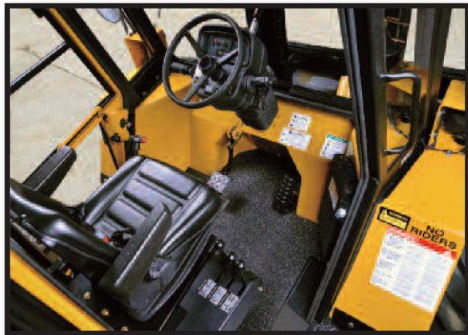


Let Us Do The Heavy Lifting

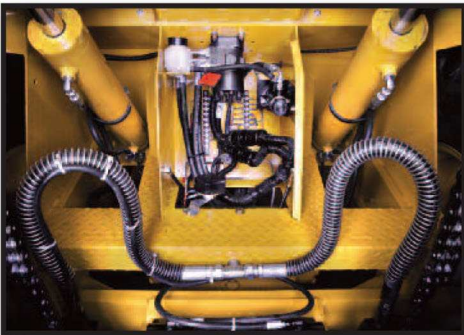
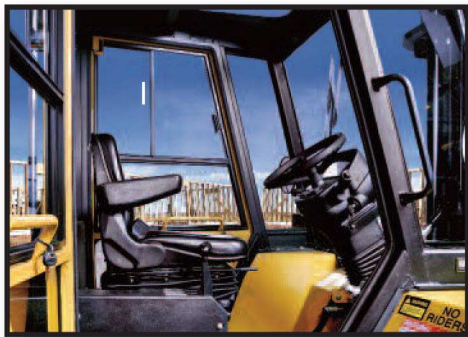
If your success depends on the efficient and effective lifting of heavy loads on any job site then, you can count on the complete line of Liftking forklifts to perform above and beyond the call of any construction project. Liftking has more than 40 years of expertise in designing, developing and manufacturing materials handling equipment to withstand the toughest conditions.

The features you need

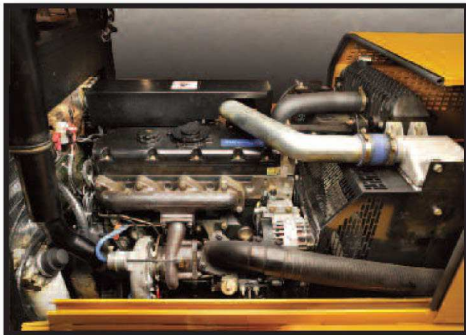
- Full Automatic 4-Speed Transmission on 16M / 20M
- Ergonomically designed controls
- Comfortable and functional cab
- 2 wheel and 4 wheel drive options
- 2 wheel steer with tight turning radius
- Full synchromesh transmissions
- Powerful Perkins Turbo Diesel engine
- Industry exclusive upgrades.



**CLOSED CAB:** The all-weather closed cab option is equipped with sound insulation, defroster fan, heavy duty heater, ergonomic controls, sliding windows, removable doors, and a 360 degree visibility for safe, efficient operation.



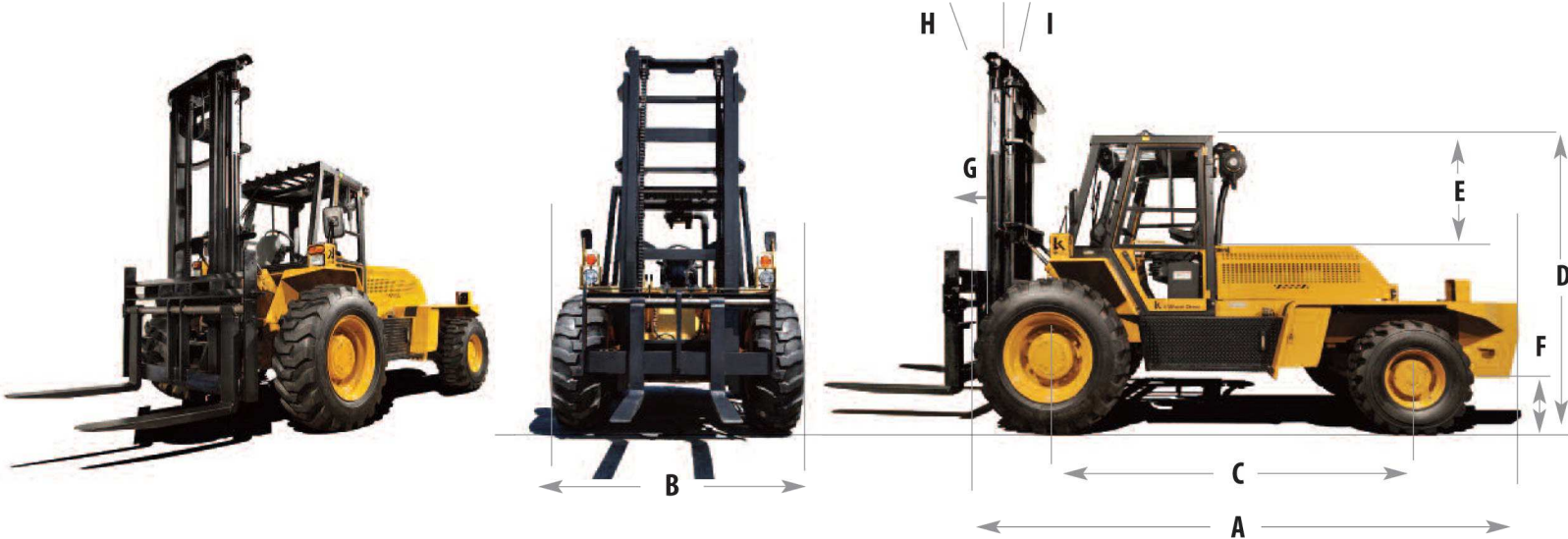
**ELECTRICAL PANEL:** Electrical system maintenance is easy through a hinged weather tight compartment located on the front of the unit between the forks.



**ENGINE:** The M Series forklifts have a sliding hood for easy access during maintenance, and house a Perkins Turbo Tier 3 emissions compliant diesel engine.



**STEERING CONTROL:** Designed for durability with an extreme duty sandwich type axle. Single cylinder with 4 inch diameter rod, and heavy duty spindles.



	Ref	LK10M	LK12M	LK16M	LK20M
Lift capacities @ 24 inch load centre		10,000 lbs / 4,545 kg	12,000 lbs / 5,454kg	16,000 lbs / 7,264 kg	20,000 lbs / 9,080kg
Overall length (without forks)	A	152 in / 3,860 mm	190 in / 4,826 mm	190 in / 4,826 mm	190 in / 4,826 mm
Overall width	B	87.5 in / 2,107mm	87.5 in / 2,107 mm	97 in / 2,464 mm	97 in / 2,464 mm
Wheelbase	C	88 in / 2,235 mm	88 in / 2,235 mm	114 in / 2,896 mm	114 in / 2,896 mm
Height to top of overhead guard	D	96.5 in / 2,451 mm	96.5 in / 2,451 mm	100 in / 2,540 mm	100 in / 2,540 mm
Distance from seat to overhead guard	E	39 in / 990 mm	39 in / 990 mm	39 in / 990 mm	39 in / 990 mm
Ground Clearance (at rear ax	F	10 in / 254 mm	10 in / 254 mm	10 in / 254 mm	10 in / 254 mm
Forward Projection	G	32 in / 813 mm	32 in / 813 mm	38 in / 965 mm	38 in / 965 mm
Mast Tilt - Forward	H	38°	38°	38°	38°
Mast Tilt - Rearward	I	11°	11°	11°	11°
Track - Drive Tires - 2WD/4WD		69 in / 1,752 mm	69 in / 1,752 mm	79 in / 2,007 mm	79 in / 2,007 mm
Track - Steer Tires - 2WD		72 in / 1,829 mm	72 in / 1,829 mm	71 in / 1,803 mm	71 in / 1,803 mm
Track - Steer Tires - 4WD		76 in / 1,930 mm	76 in / 1,930 mm	76 in / 1,930 mm	76 in / 1,930 mm
Weight		16,500 lbs / 7,500 kg	18,280 lbs /8,309 kg	22,000 lbs / 9,988 kg	28,000 lbs /8,309 kg
Travel speed		19 mph / 30 kh	19 mph / 30 kh	19 mph / 30 kh	19 mph / 30 kh
Grade ability		25%	25%	25%	25%



### Specifications OG M Series

#### ELECTRIC

System Type	12 volt negative ground with circuit breaker protection
Battery	1000 AH, Maintenance Free
Alternator	85 A
Neutral Safety Start	Yes, with anti re-start protection.
Lighting	Headlights, tail brake lights, reverse lights, and turn signals

#### TIRES

Front	15.5x25 12 PLY R4
Rear	14.0 x 17.5 14 PLY R4

#### CAPACITIES

Fuel Tank	31.5 gal / 120 ltr
Hydraulic System	31.5 gal / 120 ltr

#### ENGINE

Model and Type	Perkins 1104D-E44TA 4-Cylinder Tier 3 (Stage IIIA) Turbo Diesel
Horsepower	127 bhp (94.5 kW) @ 2200 RPM
Torque	376 ft lbs (510 Nm) @ 1400 RPM
Displacement	268 cu. in. (4.4 Liters)
Bore/Stroke	4.134 in / 105 mm   5.0 in / 127 mm
Compression Ratio	16.2:1

#### AXLES

<b>Steer Axle 2WD / 4WD</b>	Heavy Duty industrial, single cylinder, fixed track 2WD fabricated, 4WD cast steel
Oscillation	10 degrees per side
Static Rating	40,000 lbs / 18,144 kg
<b>Front Drive Axle</b>	Heavy Duty final drive outboard planetary
Differential	Limited Slip
Static Rating	40,000 lbs / 18,144 kg

#### STEERING

Type	Hydrostatic, with extreme duty single cylinder
Steering Turns Lock To Lock	4
Pressure Rating	1800 PSI / 124 Bar
Turning Radius Between Curbs	17.5 ft / 5.3 m

#### HYDRAULIC SYSTEM

Pump Type	Gear
Flow Rating	25 GPM @ 2200 RPM
Pressure Rating	2500 PSI / 173 Bar

### Mast Specifications

O.A.H.R.	MAST TYPE	O.A.H.L.	FREE LIFT ( Optional )
144 in / 3,658 mm	2 Section	116 in / 2,946 mm	72 in / 1,829 mm
168 in / 4,267 mm	2 Section	128 in / 3,251 mm	84 in / 2,134 mm
168 in / 4,267 mm	3 Section	98 in / 2,489 mm	56 in / 1,422 mm

#### STANDARD EQUIPMENT:

Heavy Duty Clearview Roller Mast with Dual Chains • Hydraulic Mast side shift • FOPS Operator compartment • Oil Cooled Submerged Disc Brakes • Manual dry-disc parking brake • Power Steering • Soft-shift Powershuttle Transmission • Limited Slip Differential • Tier 3 Turbo Diesel Engine • Headlights, tail lights, reverse lights, and turn signals with safety guards • External side view mirrors. • Wide-grip Handrails • Extra wide steps. • Hydraulic Tank Level and Temperature Gauge • Two Lockable Toolboxes • Electric Horn and automatic Backup alarm • Tilt steering column with anti-restart ignition and neutral safety interlock • Adjustable vinyl suspension seat with arm rests and retractable safety belt • Front fenders and rear fenders are extra thick steel for maximum safety and durability • Engine oil pressure gauge, fuel gauge, tachometer, hour meter, and warning lights • Lockable sliding engine hood, fuel and hydraulic caps • High-mount air intake with pre-cleaner. • Operator, maintenance and illustrated parts manuals included • 1 Year 2000 hours limited warranty (2 year engine warranty)

#### OPTIONAL EQUIPMENT:

Various mast/carriage/fork types and sizes • Various engines • Bucket attachments • Powershift electronic transmission • High durability powder coat yellow paint with black trim • Adjustable height Strobe Light • Additional lighting • Auxiliary • DS Rated • 2-Piece Split Door • Vinyl Roll-up Door • Tinted Windows • Sunvisor • 4 Wheel Brakes • Power Assisted Brakes • Deadman seat • Safety-Start Seatbelt • Heated Mirrors • Cold Weather Package • 12V Outlet • Radio • Cupholders • Enclosed all weather operator compartment with HD heater, sliding windows, wipers, lift-off doors • ROPS Operator compartment • Air Conditioning • Air ride suspension seat with arm rests and retractable safety belt • Foam filled tires • Towing package • Frame level • Contact dealer for other options.

Lifting reserves the right to make changes in specifications shown, herein, and improvements, or discontinue manufacture at any time without notice or obligation. The information contained herein is general in nature and is not intended for specific application purposes.

7135 Islington Avenue, Woodbridge, Ontario. L4L 1V9  
Tel: 905-265-3965 | Fax: 905-851-6396

[www.liftking.com](http://www.liftking.com)

11/2016