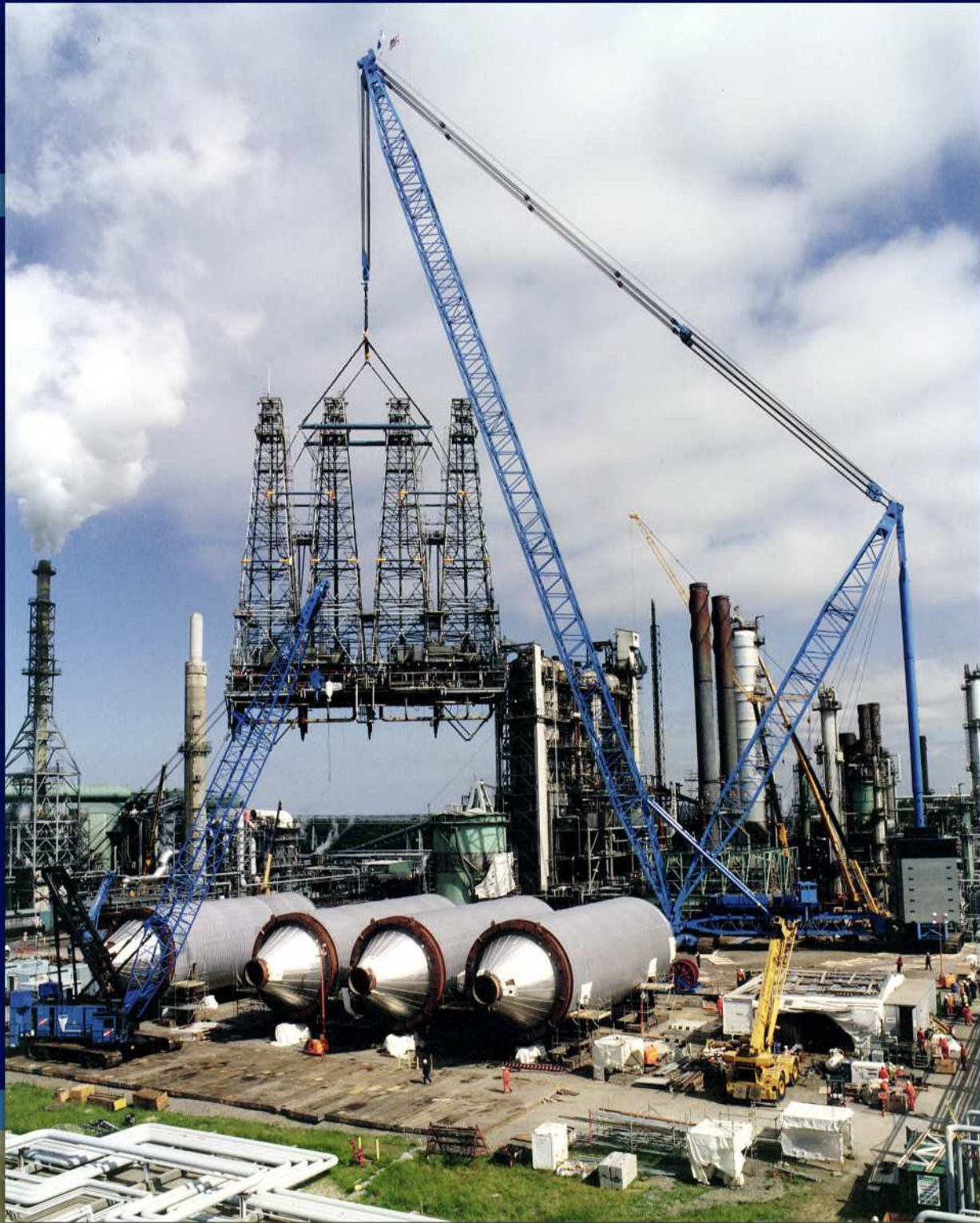


Lampson Transi-Lift LTL-1500 Mobile Heavy Lift Crane



Lampson

LTL-1500 Transi-Lift

Basic Specifications Mobile Heavy Lift Crane

Fully Mobile with Individually Powered Crawler Transporters
Up to 460' of Lampson Pin-Together Main Boom
Two (2) different Jib Styles Available
Ultimate Capacity Up To 1500 US Tons
Completely Mobile with any Charted Load
Easily Transportable by Conventional Trucks
Counterweights Use Readily Available Site Aggregate
Easily Adaptable to All Lift Situations
Call for Complete Capabilities



The Lampson Transi-Lift® LTL-1500 is one of the world's most versatile Heavy Lift Crawler Cranes. The Transi-Lift® system is a patented configuration that combines the heavy lifting capabilities of stiff leg derricks and ring mounted lift equipment with the mobility of a conventional crawler crane.

The model 1500 is easily adaptable to the lift requirements of today's heavy construction industry. All Transi-Lift® models boast precise maneuverability, adjustable stinger length, and multiple boom/jib combinations. These attributes, along with ease of operation, mechanical reliability, and worldwide availability make the Transi-Lift® the best choice for your most demanding lifting projects.

www.lampsoncrane.com

 **Lampson**
International

 Find us on
Facebook

 LinkedIn

For Lease or Sale Information Contact any of Our Worldwide Locations:

Lampson Corporate Headquarters (Kennewick, WA USA) - (509) 586-0411

Denver Colorado Branch Office - (303) 286-1000

Houston, Texas Branch Office - (713) - 674-2531

Phoenix, Arizona Branch Office - (602) 237-2080

Lampson Canada Headquarters (Beiseker, AB) - (403) 947-2222

Lampson Australia Headquarters (Toronto, NSW) - 011 61249 596222

or email genifo@lampsoncrane.com

Courtesy of CraneMarket.com