

KRUPP KMK-5110

LIFTING CAPACITIES FOR MAIN BOOM
ON RUBBER / OVER REAR ONLY
9,250 LB. COUNTERWEIGHT
LIFTING CAPACITIES IN 1,000 LBS.

Radius in Feet	FREE-ON RUBBER / OVER REAR ONLY				Radius in Feet
	BOOM LENGTH (FEET)				
		42'		73'	
10		34.2			10
13		27.5			13
15		23.1		24.3	15
20		19.4		20.3	20
23		16.3		17.2	23
25		13.6		14.5	25
30		16.5		12.3	30
33		9.5		10.6	33
35				8.8	35
40				7.5	40
43				6.2	43
45				5.0	45
50				4.2	50
55				3.3	55
PRELIMINARY					
T1		0		0	T1
T2		0		100	T2
T3		0		0	T3

KMK 5090PROVISIONAL INFORMATION
TRAVELLING ON THE JOBSITE

- (A) With mainboom and 14.8t counterweight =
MAINBOOM TO THE REAR/BOOM ANGLE TO STEEP POSITION = 84°
BOOM FULLY RETRACTED = 0 TELESCOPE
- (B) With mainboom and 14.8t counterweight =
MAINBOOM TO THE FRONT/BOOM ANGLE TO FLAT POSITION = $0 - 5^{\circ}$
BOOM TELESCOPED 8M WITH SECTION 1 = BOOM LENGTH OF 20.65M
- (C) With mainboom and 10.0t counterweight =
MAINBOOM TO THE REAR/BOOM ANGLE TO STEEP POSITION = 84°
BOOM FULLY RETRACTED = 0 TELESCOPE
- (D) With mainboom and 10.0t counterweight =
MAINBOOM TO THE FRONT/BOOM ANGLE TO FLAT POSITION = $0 - 5^{\circ}$
BOOM TELESCOPED 4.725M WITH SECTION 1 = BOOM LENGTH OF 17.4M
- (A) TO (D) Is with 650KG Hook block reeved on the mainboom
- (E) With mainboom/14.8t counterweight and swing away jib mounted
in the working position = fixed on boom head =
MAINBOOM TO THE REAR/BOOM ANGLE TO STEEP POSITION = 84°
BOOM FULLY RETRACTED = 0 TELESCOPE
- (F) With mainboom/14.8t counterweight and swing away jib mounted
in the working position = fixed on boom head =
MAINBOOM TO THE FRONT/BOOM ANGLE TO FLAT POSITION = $0 - 5^{\circ}$
BOOM TELESCOPED 4.725M WITH SECTION 1 = BOOM LENGTH OF 17.4M
PLUS 10/16M SWING AWAY JIB
- (G) With mainboom/10.0t counterweight and swing away jib mounted
in the working position = fixed on boom head =
MAINBOOM TO THE REAR/BOOM ANGLE TO STEEP POSITION = 84°
BOOM FULLY RETRACTED = 0 TELESCOPE
- (H) With mainboom/10.0t counterweight and swing away jib mounted
in the working position = fixed on boom head =
MAINBOOM TO THE FRONT/BOOM ANGLE TO FLAT POSITION = $0 - 5^{\circ}$
BOOM TELESCOPED 2.5M WITH SECTION 1 = BOOM LENGTH OF 15.15M
PLUS 10/16M SWING AWAY JIB
- (E) TO (H) Is with 300KG Hook block reeved on 10/16M jib

(DANGER)

See operating instructions book - read and fully understand
all conditions BEFORE moving the truck crane when it is rig-
ged.

KRUPP KMK 5110

Hook Elevation Diagram

Main boom and lattice extension - 79 ft.

214

32.6* lbs.
Counterweight

79'
Lattice
Extension

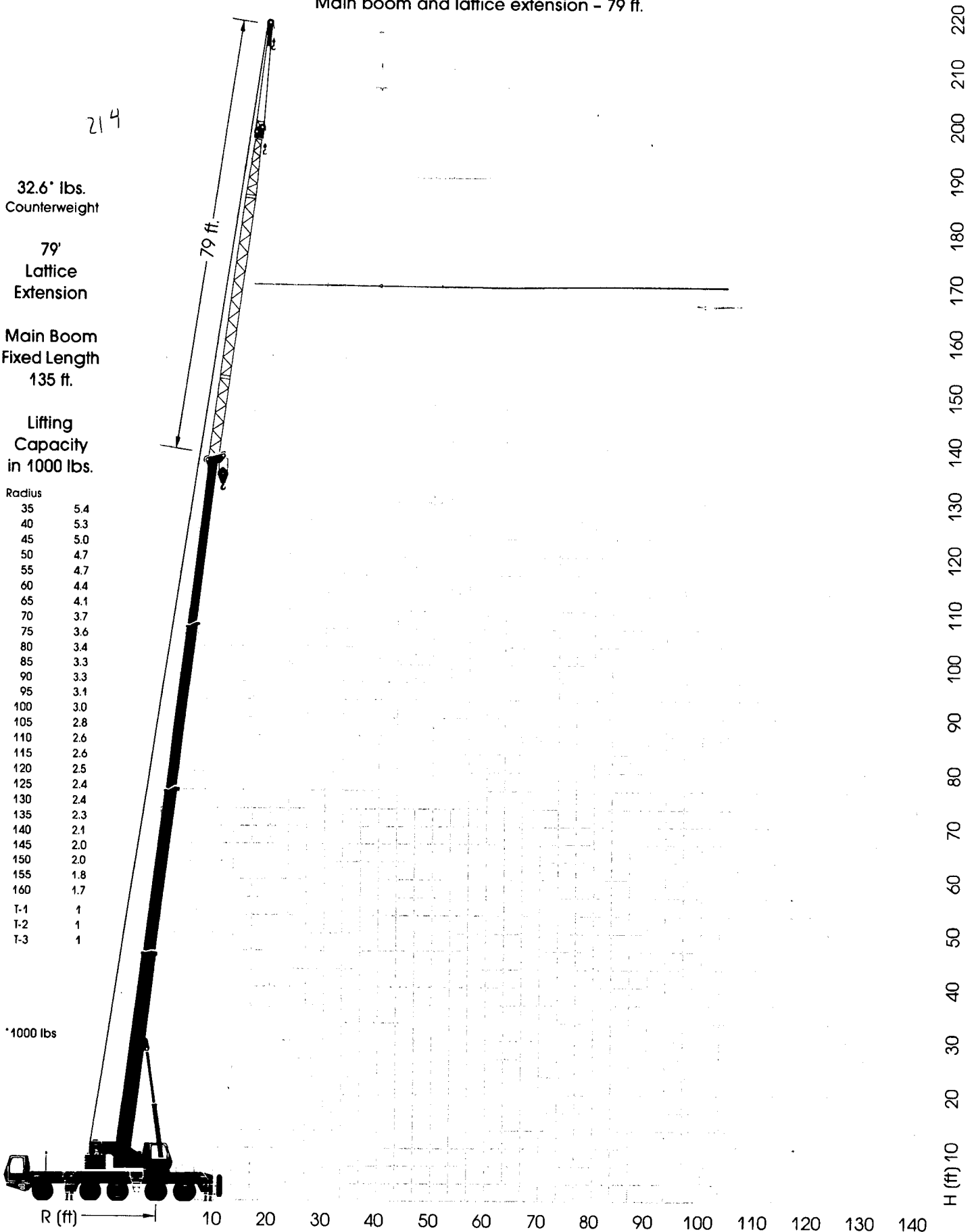
Main Boom
Fixed Length
135 ft.

Lifting
Capacity
in 1000 lbs.

Radius

35	5.4
40	5.3
45	5.0
50	4.7
55	4.7
60	4.4
65	4.1
70	3.7
75	3.6
80	3.4
85	3.3
90	3.3
95	3.1
100	3.0
105	2.8
110	2.6
115	2.6
120	2.5
125	2.4
130	2.4
135	2.3
140	2.1
145	2.0
150	2.0
155	1.8
160	1.7
T-1	1
T-2	1
T-3	1

*1000 lbs




KRUPP KMK 5110


Main Boom

Reduced Outrigger Base - 17'2" × 26'9"

Lifting capacities in 1000 lbs



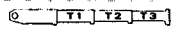
42 - 135 ft



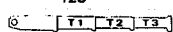
360°

32.6*
Counterweight lbs

Radius ft	42 ft	57 ft	73 ft	73 ft	73 ft	104 ft	104 ft	135 ft	Radius ft	
10°									10°	
10									10	
15	211.4	146.7							15	
20	160.7	146.7							20	
25	107.4	104.4	87.3	101.5	67.9	63.1	38.8		25	
30	70.9	68.4	70.2	66.9	66.9	59.5	38.8		30	
35	50.7	48.4	50.0	47.1	52.8	49.6	35.7	34.0	35	
40		36.5	37.9	35.3	40.5	37.5	31.2	33.2	40	
45		28.4	29.6	27.3	32.0	29.3	27.7	30.2	45	
50		22.7	23.8	21.6	25.9	23.5	25.2	26.2	50	
55			19.4	17.3	21.5	19.1	23.3	21.6	55	
60			16.0	13.9	18.0	15.6	20.5	18.1	60	
65			13.2	11.2	15.2	12.9	17.6	15.3	65	
70			10.9	9.0	12.8	10.6	15.3	13.0	70	
75						8.7	13.3	11.0	75	
80						7.1	11.6	9.3	80	
85						5.7	10.1	7.9	85	
90						4.5	8.9	6.7	90	
95						3.4	7.8	5.6	95	
100							6.8	4.6	100	
105								3.8	105	
110								3.0	110	
115								2.3	115	
120								1.7	120	
	T1	0	0.5	0.5	1	0	1	0	1	T1
	T2	0	0	0.5	0	1	1	1	1	T2
	T3	0	0	0	0	0	0	1	1	T3




%




%

* over rear only



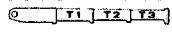
42 - 135 ft



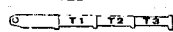
360°

22.0*
Counterweight lbs

Radius ft	42 ft	57 ft	73 ft	73 ft	73 ft	104 ft	104 ft	135 ft	Radius ft	
10									10	
15									15	
20	209.1	146.7							20	
25	153.2	146.7							25	
30	91.1	88.2	87.3	86.5	67.9	63.1	38.8		30	
35	59.5	57.0	58.8	55.6	62.0	58.5	38.8		35	
40	42.0	39.8	41.3	38.5	44.2	41.0	35.7	34.0	40	
45		29.6	30.9	28.5	33.5	30.6	31.2	33.2	45	
50		22.7	23.9	21.6	26.1	23.6	27.7	26.4	50	
55		17.8	18.9	16.8	21.1	18.6	23.8	21.3	55	
60			15.1	13.0	17.2	14.8	19.8	17.4	60	
65			12.2	10.1	14.1	11.8	16.7	14.3	65	
70			9.8	7.8	11.7	9.4	14.2	11.8	70	
75			7.8	5.8	9.7	7.5	12.1	9.8	75	
80						5.8	10.4	8.1	80	
85						4.4	8.9	6.7	85	
90						3.2	7.7	5.4	90	
95						2.2	6.6	4.4	95	
100							5.6	3.4	100	
105							4.8	2.6	105	
110									110	
115									115	
120									120	
	T1	0	0.5	0.5	1	0	1	0	1	T1
	T2	0	0	0.5	0	1	1	1	1	T2
	T3	0	0	0	0	0	0	1	1	T3



%



%

*1000 lbs

KRUPP KMK 5110

Main Boom + Swing-Away Extension

30° Offset

Lifting capacities in 1000 lbs



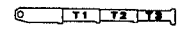
33 - 52 ft



360°

Counterweight **32.6*** lbs

Radius ft	Main boom fixed length in ft				Radius ft
	Lattice extension length 33 ft		Lattice extension length 52 ft		
	119 ft 30°	135 ft 30°	119 ft 30°	135 ft 30°	
30					30
35					35
40	13.3				40
45	13.3				45
50	13.3				50
55	13.2	10.9			55
60	12.6	10.9			60
65	12.1	10.5	6.1	6.1	65
70	11.7	10.2	6.1	6.1	70
75	11.3	9.9	6.1	6.1	75
80	10.9	9.6	6.1	6.1	80
85	10.6	9.3	6.1	6.1	85
90	10.3	9.0	6.1	6.1	90
95	10.0	8.8	6.0	6.1	95
100	9.7	8.5	5.9	6.1	100
105	9.5	8.2	5.8	6.1	105
110	8.6	8.0	5.8	6.0	110
115	7.6	7.8	5.7	5.9	115
120	6.8	7.6	5.7	5.8	120
125	5.9	7.3	5.6	5.8	125
130	5.1	6.5	5.6	5.7	130
135	4.3	5.7	5.5	5.6	135
140		4.9	5.4	5.5	140
145		4.2	4.7	5.1	145
150		3.6	4.1	4.4	150
155		3.0	3.5	3.8	155
160			2.9	3.3	160
				2.7	
	T1	1	1	1	T1
	T2	1	1	1	T2
	T3	0.5	1	0.5	T3



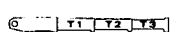
33 - 52 ft



360°

Counterweight **22.0*** lbs

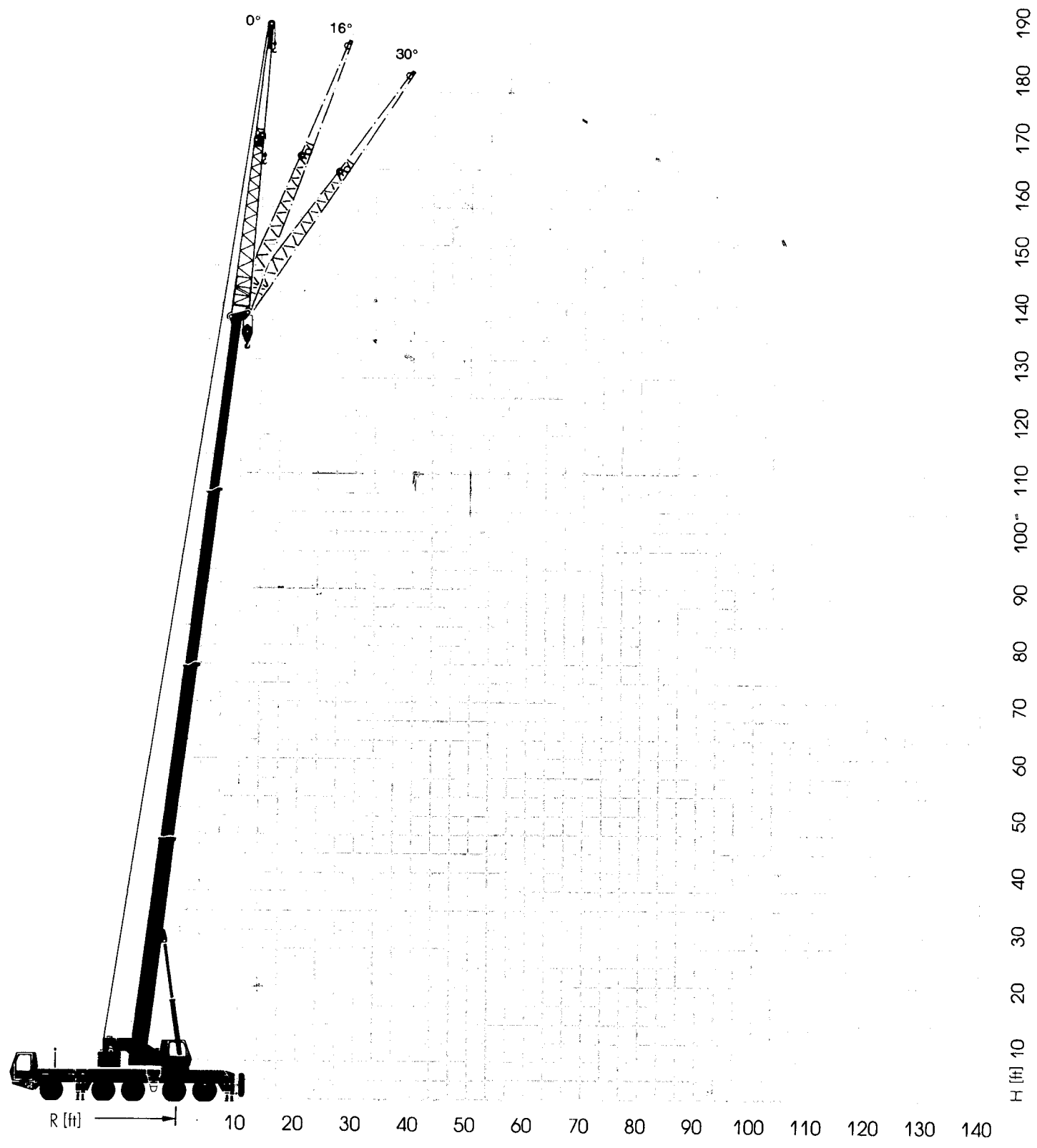
Radius ft	Main boom fixed length in ft				Radius ft
	Lattice extension length 33 ft		Lattice extension length 52 ft		
	119 ft 30°	135 ft 30°	119 ft 30°	135 ft 30°	
30					30
35					35
40	13.3				40
45	13.3				45
50	13.3				50
55	13.2	10.9			55
60	12.6	10.9			60
65	12.1	10.5	6.1	6.1	65
70	11.7	10.2	6.1	6.1	70
75	11.3	9.9	6.1	6.1	75
80	10.9	9.6	6.1	6.1	80
85	10.6	9.3	6.1	6.1	85
90	10.3	9.0	6.1	6.1	90
95	9.5	8.8	6.0	6.1	95
100	8.3	8.5	5.9	6.1	100
105	7.3	8.2	5.8	6.1	105
110	6.4	7.8	5.8	6.0	110
115	5.5	7.6	5.7	5.9	115
120	4.8	7.3	5.7	5.8	120
125	4.0	6.8	5.6	5.8	125
130	3.2	6.0	5.6	5.7	130
135	2.5	5.2	4.9	5.2	135
140		4.5	4.3	4.6	140
145		3.8	3.6	4.0	145
150		3.1	3.0	3.4	150
155		2.5		2.8	155
160				2.2	160
	T1	1	1	1	T1
	T2	1	1	1	T2
	T3	0.5	1	0.5	T3



KRUPP KMK 5110

Hook Elevation Diagram

Main boom and lattice extension
0-16-30° Offsets



KMK 3045 - 4070 - 5090

INSTALLATION OF 30° OFFSET JIB

1. Install swing away on the head in the normal manner.
2. Support the weight of the jib by means of an auxiliary crane or by putting the tip of the jib on the ground or similar surface.
3. Remove pins #1, #2 - Fig. "A".
4. Boom up to 18° to 20° leaving the tip of the jib on the ground. Install side brackets left and right with pins #1 and #3 as shown in Fig. "B".
5. Boom up until the tip of the jib comes off the ground or auxiliary crane. Install pin #2 as shown in Fig. "C". From the ground the jib should look like Fig. "D".

Note: Put information into S.L.I. for 30° offset operation.

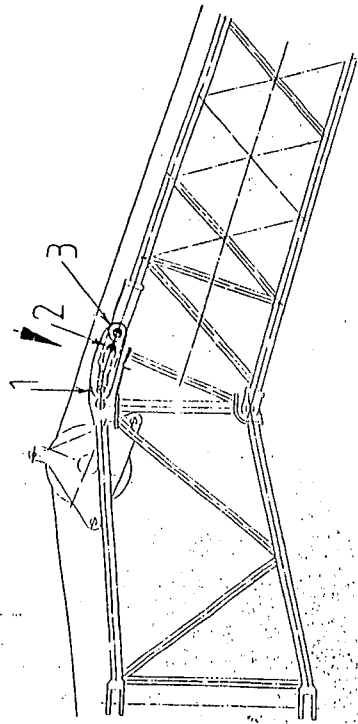
If you wish to operate the jib at 16° after 30° operation it is not necessary to remove the links.

1. Boom down until the tip of the jib is just off the ground and remove pin #2.
2. Boom down until the jib is at 16°. Install pin #2 as in Fig. "B". Jib is now in 16° working position.

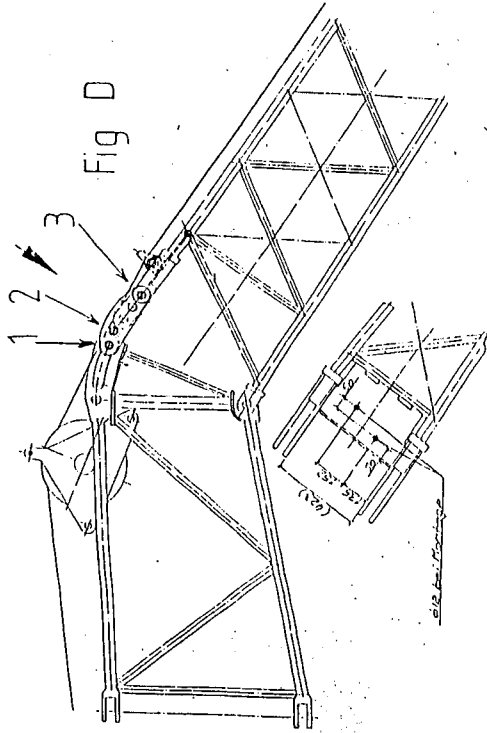
To return jib to 0° position.

1. Boom down until the tip of the jib is supported on the ground or with auxiliary crane.
2. Remove all 3 pins and side brackets (both sides of jib).
3. Boom down until jib is at 0° and install pins #1 and #2 as per Fig. "A".

15° Offset



30° Offset



1° Offset

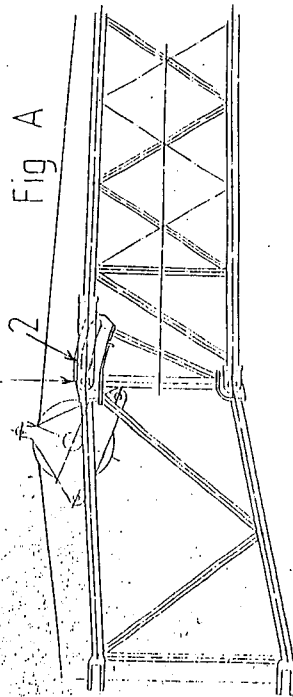


Fig A

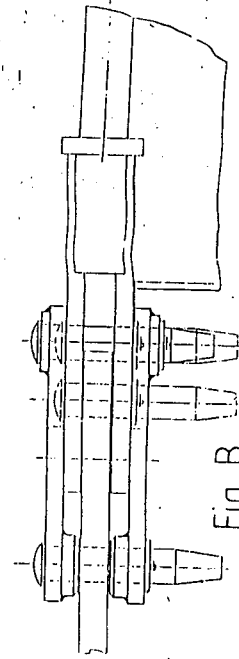


Fig B

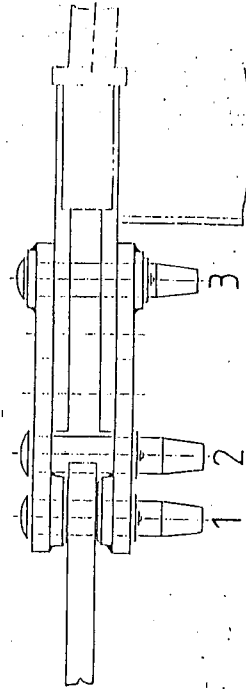


Fig C

KMK 5090 - 4070

7255312	St	7255312	CA
Arbeco 30°		KPU	
1992		7255312	