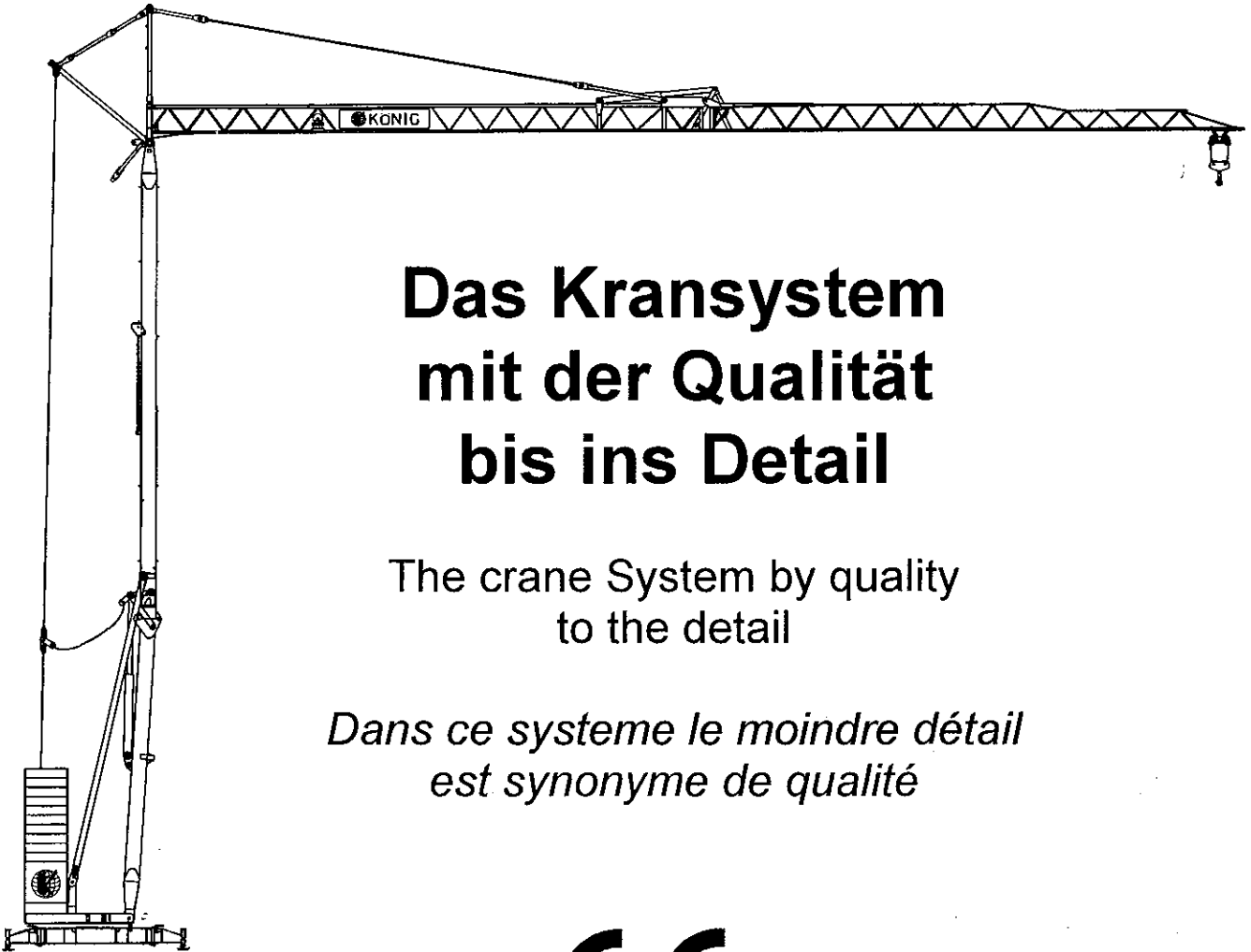


Turmdrehkran K 1030 Hydro

Tower Crane ● *Grue à tour*



Das Kransystem mit der Qualität bis ins Detail

The crane System by quality
to the detail

*Dans ce systeme le moindre détail
est synonyme de qualité*



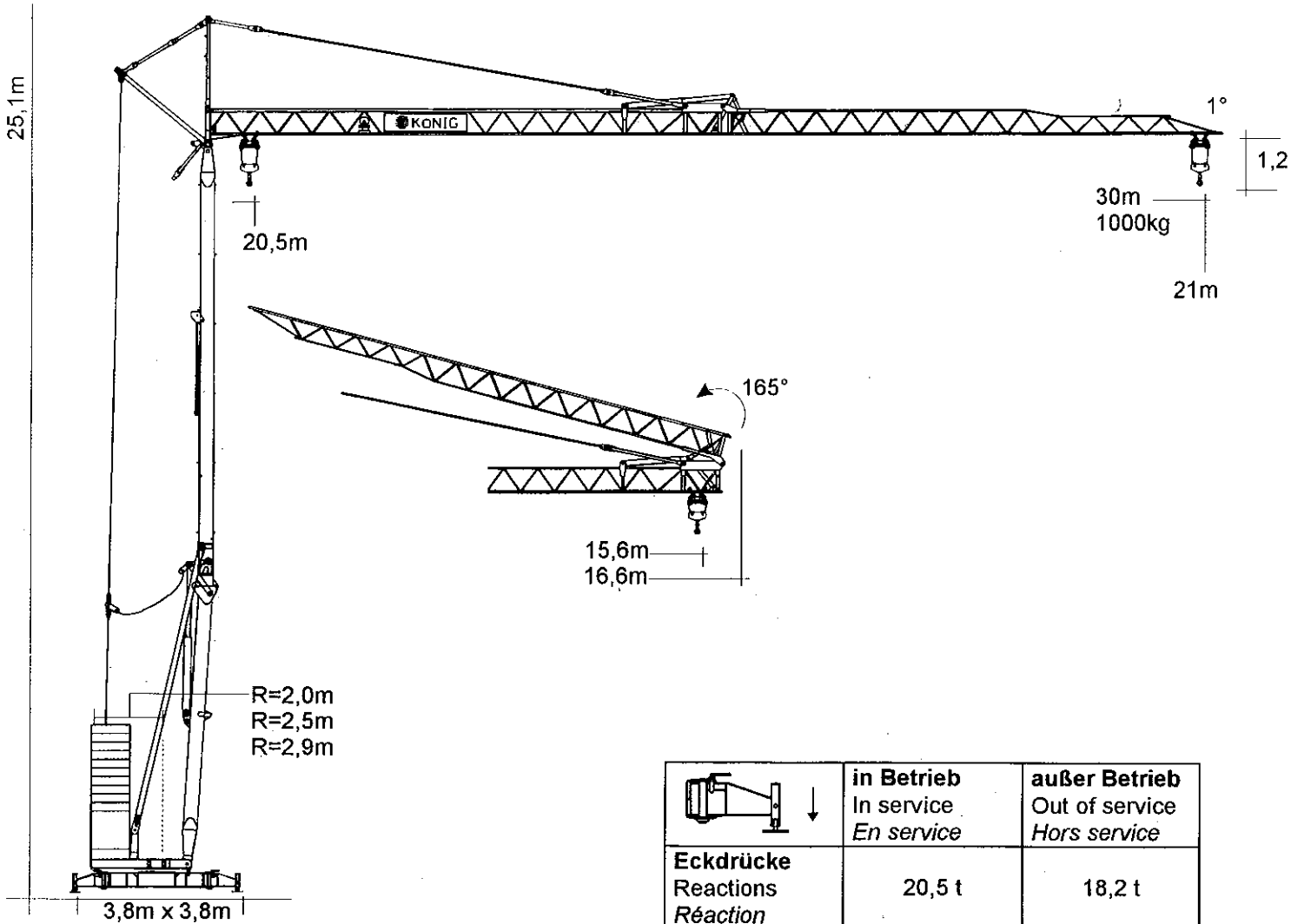
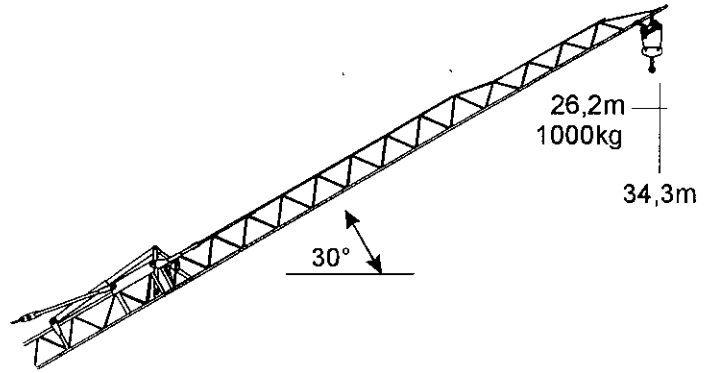
DIN 15018 ● H1 ● B3

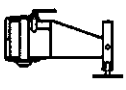


KÖNIG-KRANE
Made in Germany

K 1030 H

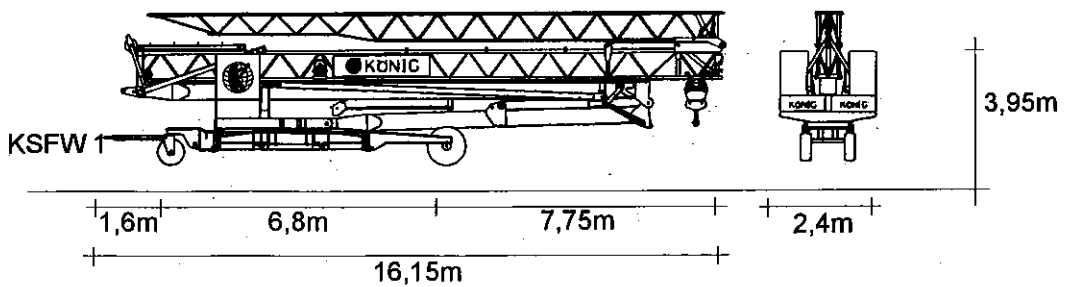
Technische Daten • Technical data • Caractéristiques techniques



|  | in Betrieb In service <i>En service</i> | außer Betrieb Out of service <i>Hors service</i> |
|---|--|---|
| Eckdrücke Reactions <i>Réaction</i> | 20,5 t | 18,2 t |

Straßentransport

Transport by road • *Transport sur la route*





K 1030 H

Technische Daten • Technical data • Caractéristiques techniques

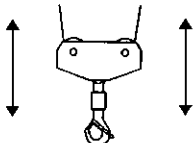
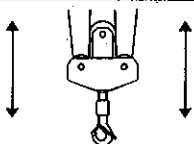
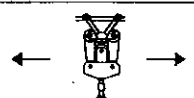
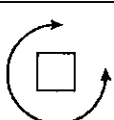
Ausladung und Tragfähigkeit

Radius and capacity • *Portée et charge*

| | | | | | | | | | | | | | | | |
|---|---------|------|------|------|------|------|------|------|------|------|------|------|------|------|------|
|  | 0° (m) | 16 | 18 | 19 | 20 | 21 | 22 | 23 | 24 | 25 | 26 | 27 | 28 | 29 | 30 |
| | kg | 2000 | 1832 | 1720 | 1620 | 1530 | 1450 | 1375 | 1310 | 1245 | 1190 | 1135 | 1090 | 1040 | 1000 |
| | 30° (m) | 15,0 | 15,8 | 16,6 | 17,5 | 18,4 | 19,2 | 20,1 | 21,0 | 21,8 | 22,7 | 23,6 | 24,4 | 25,3 | 26,2 |

| | | | | | | | | | | | | | | | |
|---|--------|------|------|------|------|------|------|------|------|------|------|------|------|------|-----|
|  | 0° (m) | 9,3 | 10 | 12 | 14 | 16 | 18 | 20 | 22 | 24 | 26 | 27 | 28 | 29 | 30 |
| | kg | 4000 | 3645 | 2925 | 2430 | 2075 | 1800 | 1590 | 1415 | 1275 | 1155 | 1105 | 1055 | 1010 | 970 |

Geschwindigkeiten • Speeds • Vitesses

| | Stufe • Step • Cran | m/min. | kg | kW |
|---|---------------------|---|------|-----|
|  | 1 | 6 | 2000 | 3,5 |
| | 2 | 21 | 2000 | 9 |
| | 3 | 48 | 1000 | 11 |
|  | 1 | 3 | 4000 | 3,5 |
| | 2 | 10,5 | 4000 | 9 |
| | 3 | 24 | 2000 | 11 |
|  | 1 | 20 | | 1,5 |
| | 2 | 40 | | 2,2 |
|  | | 0-0,8 U/min. sl./min. tr./min. | | 2,2 |

Leitungsquerschnitt bis 50 m: 5 x 10 mm²
Cross section of cable up to
Section de cable jusque à

Betriebsspannung 400 V
Operation voltage
Tension de service

Frequenz 50 Hz
Frequency
Fréquence

Gesamtanschlußwert 13,9 kVA
Power requirement (15,4 kW)
Puissance requise

Gewichte • Weight • Poids

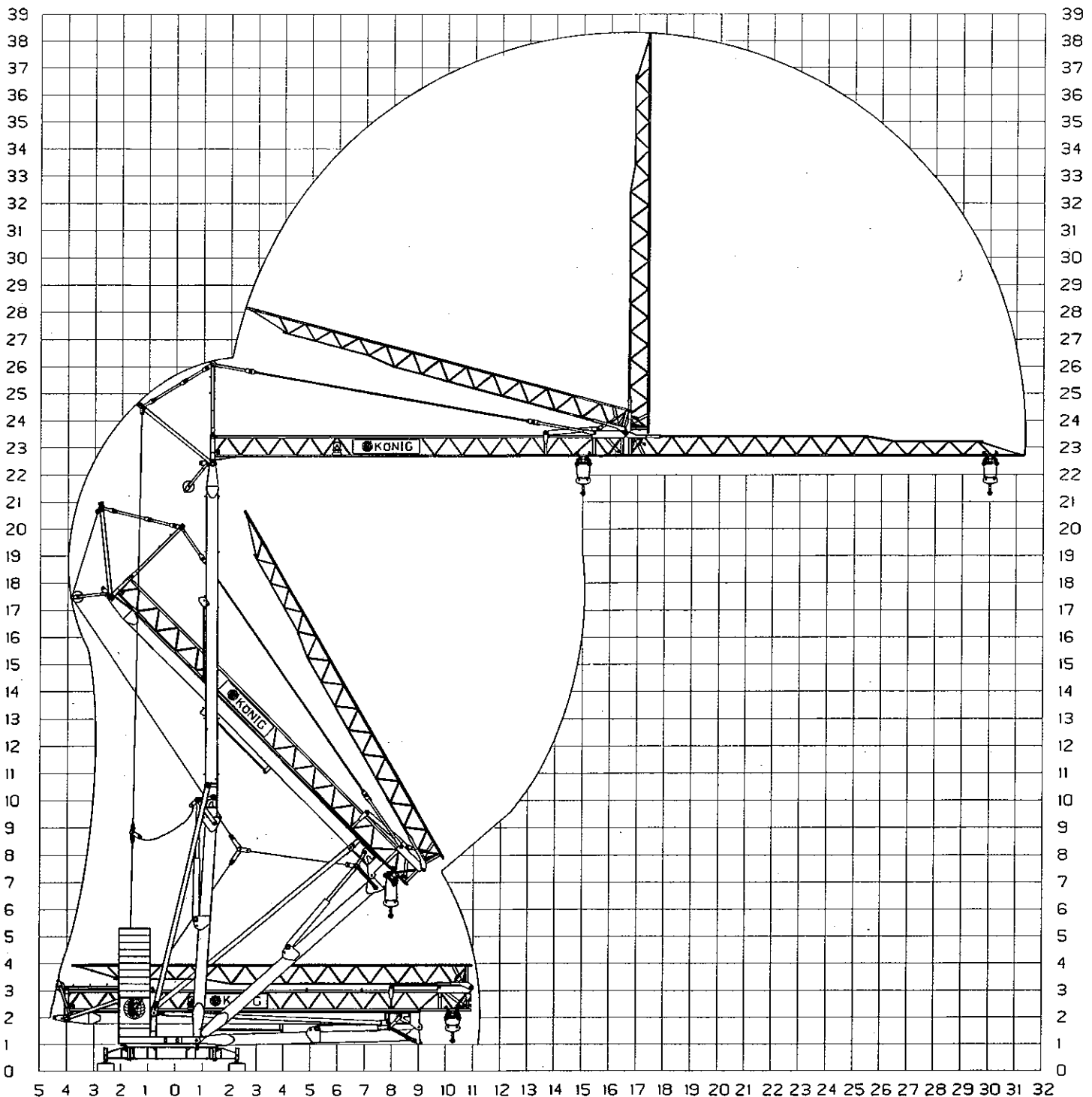
| | | | |
|--|-------------------------------------|---|---|
| Zentralballast Central ballast weight <i>Lest de base</i> | 5.900 kg | Transportgewicht ca. Transport weight approx. <i>Poids de transport env.</i> | 20.150 kg* |
| Gegengewicht Counterweight <i>Contrepoids</i> | r = 2,9 m r = 2,5 m r = 2,0 m | 11.200 kg 14.000 kg 16.800 kg | Konstruktionsgewicht ca. Dead weight approx. <i>Pois de la construction env.</i> |
| | | | 12.100 kg |

* inkl. Transportachse KSFW1 und Transportadapter.

K 1030 H

Technische Daten • Technical data • Caractéristiques techniques

Montage • Mounting • Montage



König Baumaschinen-Vertrieb GmbH
Postfach 1164 • D-53563 Asbach/Ww.
D-53567 Asbach-Schöneberg
Tel. ++49 (0) 2683 / 9172-0 • Fax -10
www.Koenig-Krane.de

Ihr König-Fachhändler: