

CR-250RV
PREMIUM
CITYRANGE



<http://www.kato-works.co.jp>

- Before you use the crane, study the instruction manual thoroughly and follow the instructions it contains.
- Some differences may arise between the machine delivered and the photographs in the catalog due to the country the crane will be used in or any added improvements.
Note : The specification may be changed without notice.
- The actual colors of the body and interior may appear slightly different from those shown in this catalogue due to the limitations of photography and printing.
- Contact for enquiry:

KATO

KATO WORKS CO.,LTD.

**QUALITY & EXPERIENCE
 SINCE 1895**

C05221
 3.2020-1000(FB)1 Printed in Japan

CR-250RV

9-37, Higashi-oh 1-chome, Shinagawa-ku, Tokyo, 140-0011, Japan / Tel : Head Office : +81 (0) 3 3458-1111 Overseas Marketing Department : +81 (0) 3 3458-1115 / FAX : +81 (0) 3 3458-1151

CITYRANGE

CR-250RV

PREMIUM
CITYRANGE

EJIB'S



KATO

Courtesy of CraneMarket.com



High performance and intelligence New hydraulic luffing and telescoping fly Jib based on 4S concept



Slant Boom First ever EJIB on a City Crane

Jib deployment is possible even in confined space. Thanks to the aerial swing out mechanism on the EJIB.

Safety

All Jib deployment work would be completed on the ground. Therefore climbing to a high position for Jib deployment will be unnecessary.

Speedy

Only 2 times outside work for Jib deployment. Its time saving, therefore crane work can be started almost immediately.

Outside work ①



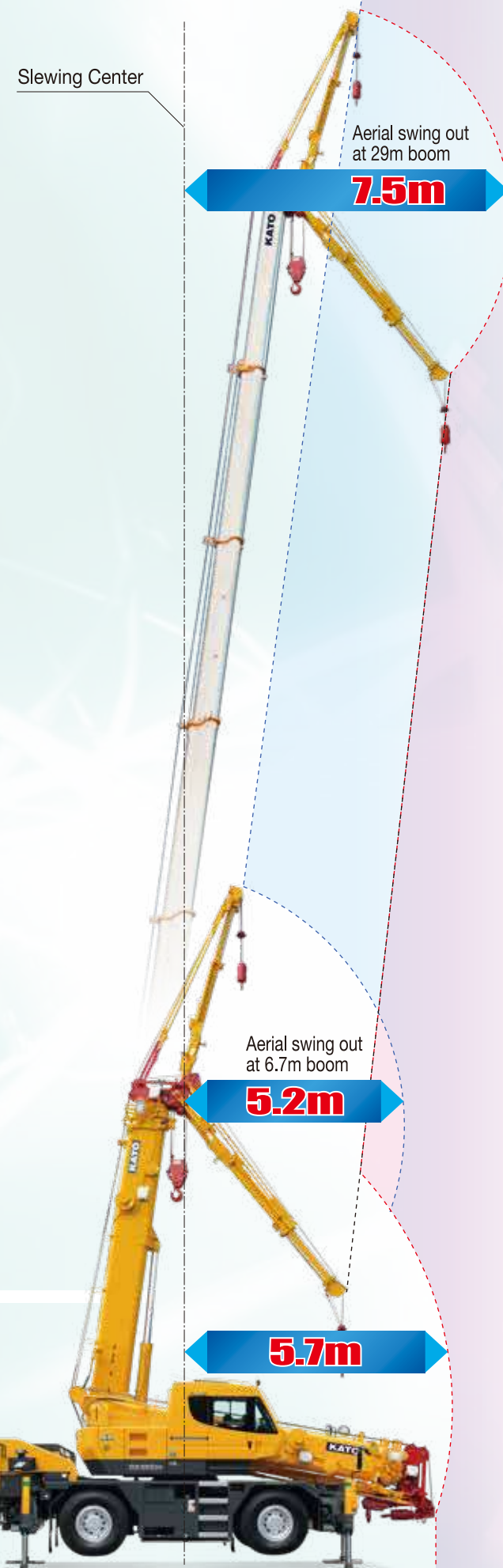
Lay down the Boom and connect the Tension Rod.

Outside work ②



Extend the Boom and release the Jib.

Secure the Auxiliary Hook to the Jib top.



The Jib is swung out when the Jib derrick operation is carried out.

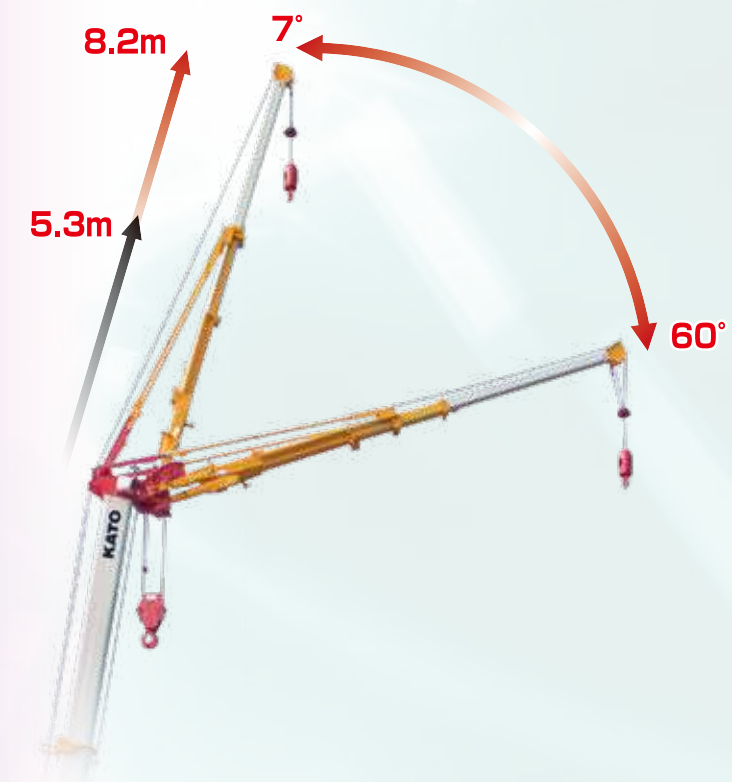
Small space

The necessary space for Jib deployment is almost within Boom derricking range at max retraction. Jib release from the Boom can be carried out at any possible Boom length and avoiding obstruction at any height.

Jib lifting capacity



- Maximum lifting capacity..... 3t x 76°
- Jib length..... 5.3m~8.2m
- Maximum lifting height..... 38.4m
- Jib offset angle..... 7°~60°



The figure is an image of the front space when the Jib is deployed and stored. The size and dimensions of the figure do not match.

Courtesy of CraneMarket.com



29m

29m 6-section fully powered high-tensile round shaped Boom

High speed winch for the quick lifting work

◆ Boom lifting capacity SUPERBOOM

- Maximum lifting capacity..... **25t × 2.8m**
- Boom length..... **6.7m~29m**
- Maximum lifting height..... **30.0m**
- Boom derricking angle..... **-9°~84°**

■ Tail slewing radius
.....**2.42m**
(at the slide sheave)
.....**2.23m**
(at the Counter Weight)

24.6m Boom (working radius)
3.40t × 13.0m



Searcher Hook
New compact design (Option)

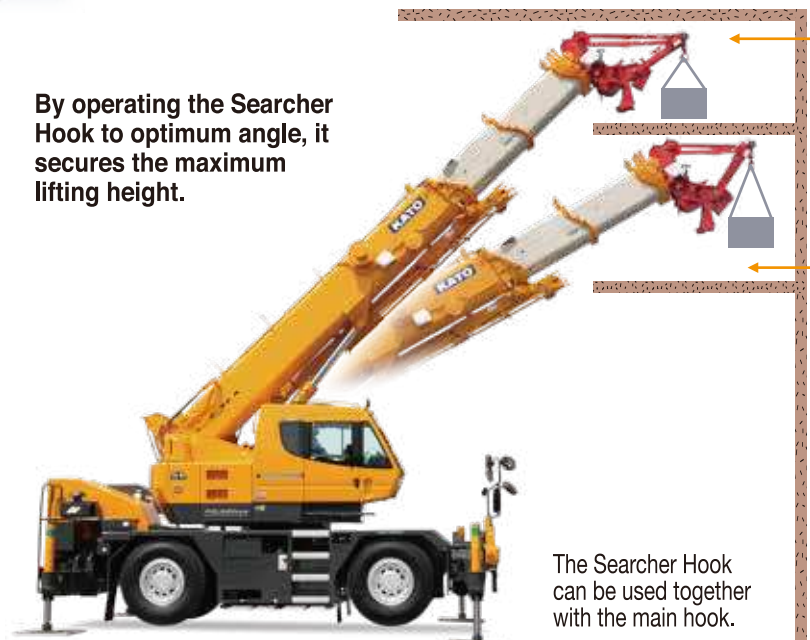
2 position offset angle Searcher Hook is available - giving optimum working range for Searcher Hook tasks

MAX 7.5t

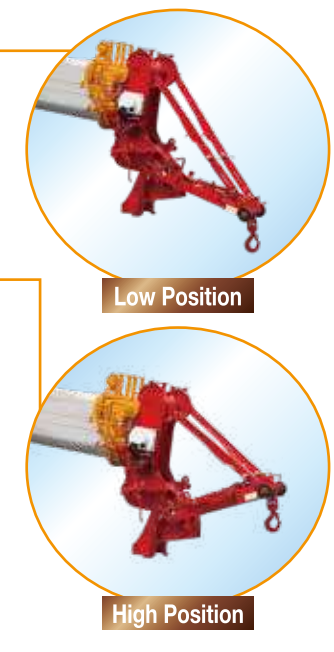
Casters make moving the Searcher Hook easy and effortless.



By operating the Searcher Hook to optimum angle, it secures the maximum lifting height.

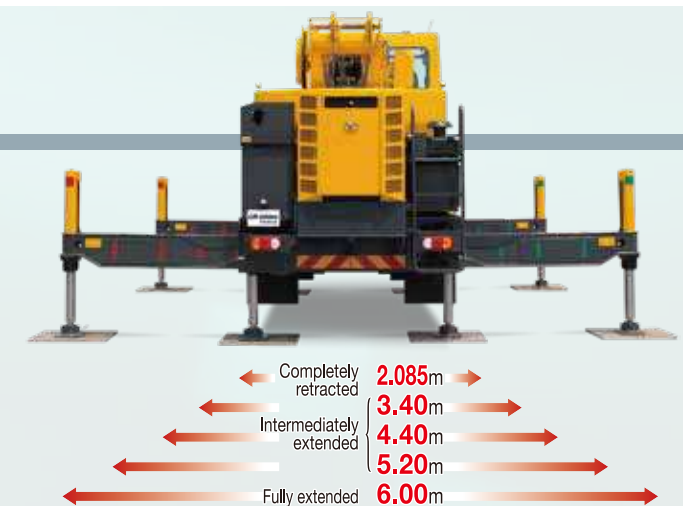


The Searcher Hook can be used together with the main hook.



Find the optimum outrigger positions from various options

◆ Multiple outrigger positions are available for optimum lifting operation. Outriggers can be operated from both the cabin and outside the cabin.



High performance and Environment-friendly EU StageV Engine

◆ The SCR (Selective Catalytic Reduction) and DPF reduces NOx and PM emission.

- Model..... Cummins B6.7
- Piston displacement..... **6.690L**
- Max. power..... **209kW at 2,000min⁻¹**
- Max. torque..... **1152N·m at 1,500min⁻¹**



Wide traveling visibility angle Ergonomically designed with advanced features



- ◆ It is easy to view and shows travelling information.

▼ LCD Cluster Meter



(km/h indication)



(MPH, km/h indication)

● IC Engine Start Tag



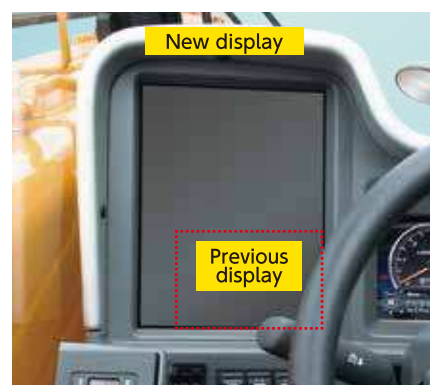
- The IC built-in tag ensure the high level security. Crane theft is prevented with tag registration.

● Emergency engine stop switch



(for crane operation)

Large size display (Option)



- The new display is 3 times wider than the previous model. 12.1 inch large size. The clear display shows a bird's-eye view from the safety cameras.

Clear and safe view



- Good left side traveling visibility is the CR's greatest feature. The slanted and round shaped boom secures an all-round visibility.



- ▲ It can display multiple camera views at the same time.

- ▲ Easy to use icons.

More roomy and comfortable cab

Large capacity Air Conditioner



- It provides roomy air conditioner from the number of outlets arranged in the cabin.

Step-less adjustable sun shade



- The new sun shade cuts the sun light completely. This is useful to the operator by confirming lifting operation outside of the cabin clearly.



▲ 3 position seat belt



The new shift switch for driving

- The foot space has been enhanced. The new shift switch design provides 5cm wider space compared to the previous model.



▲ Great overhead visibility



▲ Room light



▲ New large size lunch table (option)



▲ New seat suspension

Advanced safety traveling features

NEW
Safety Feature

Clearance sonar system

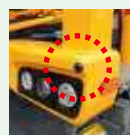
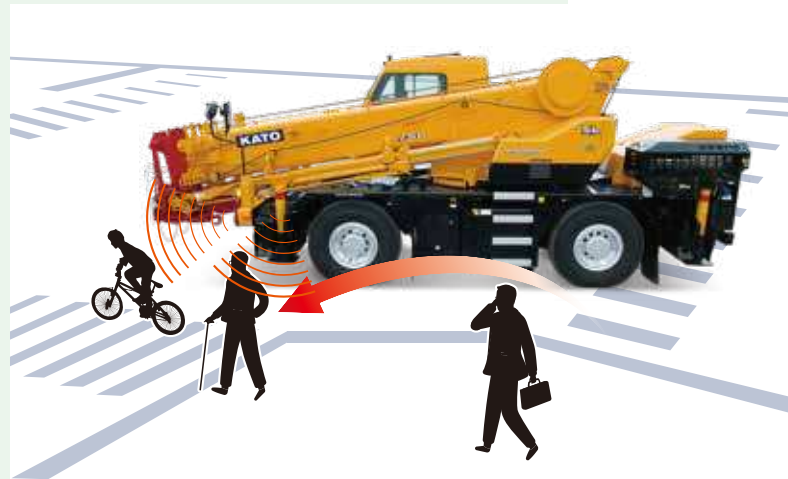
KATO CLEARANCE SONAR SYSTEM

The clearance sonar detects the obstruction and alerts the Operator.

Alarm sound cancellation switch



▲ Indicator



▲ Left-front



▲ Left-front wheel



▲ Left-rear



▲ Rear

Note) The images are for illustration purposes only and does not show the actual detection range. The performance of this system has limits. The Operator has a responsibility to drive carefully and safely.

ABS

NEW

- The ABS braking system has been provided as a standard feature. Ensures even safer braking especially on slippery ground.

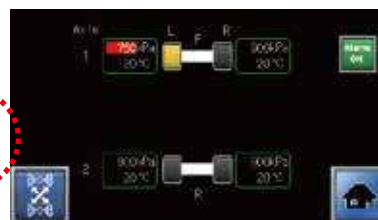
Tire Pressure Monitoring System

NEW

(Option)



▲ Tire malfunction indication



▲ Air pressure information and temperature indication

- It indicates and alerts the air pressure and temperature information on the COR information display.

NEW
item

360 degrees of safety

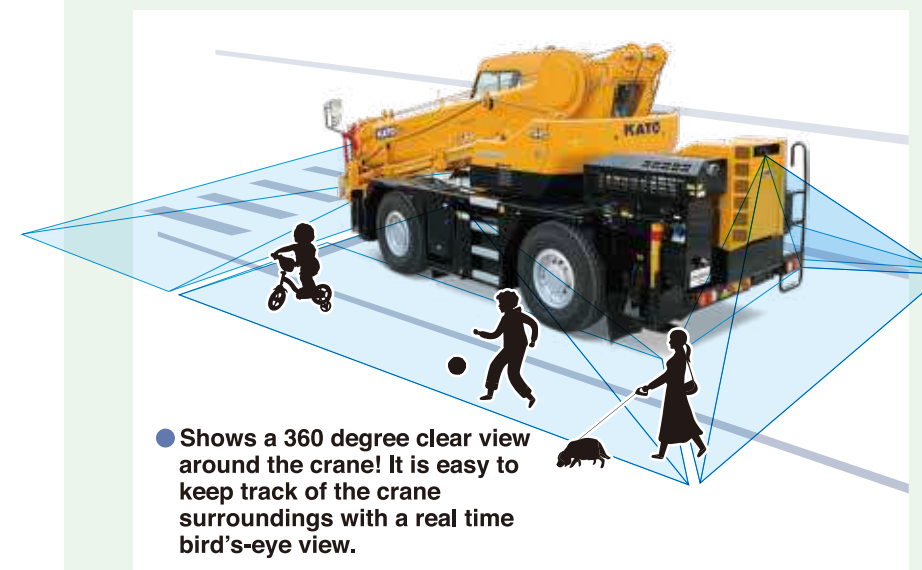
KATO SAFETY VIEW SYSTEM

360°



Surround View Camera

Operator is able to monitor a clear 360° view of the crane with this new feature. This aids safer stopping and/or parking.

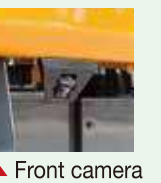


- Shows a 360 degree clear view around the crane! It is easy to keep track of the crane surroundings with a real time bird's-eye view.

Note) the images are for illustration purpose only and do not show actual view range.



▲ Bird's-eye view



▲ Front camera



▲ Left camera



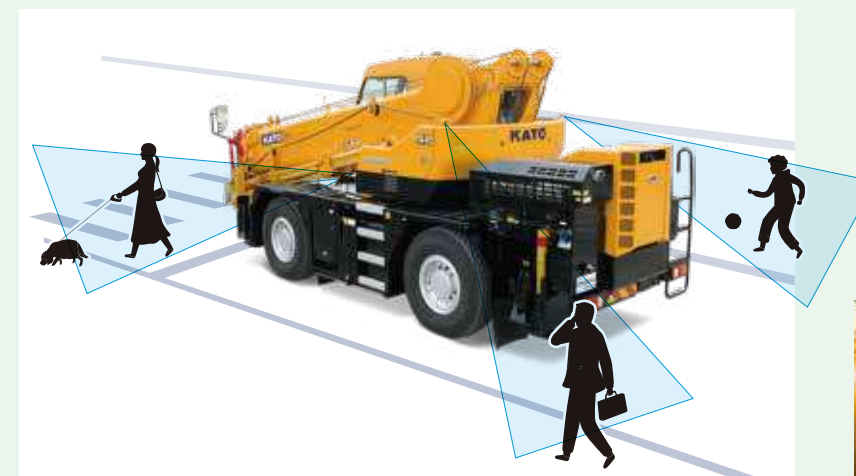
▲ Right camera



▲ Rear camera

Human Detect Assist System

The safety cameras detect human in blind spot areas and alerts the operator visually and audibly.



▲ Left-front camera



▲ Left-rear camera



▲ Right-rear camera



▲ Left-rear view



▲ Left-front view

Note) It can not make 3 different detection at the same time. The operator decides which camera to use for detection.
Note) This is support function for the operator. Therefore operator must always be vigilant when driving.
Note) The Safety View System less specification is also available.

Excellent functional support

Touch screen control COR information display

Information such as fuel consumption, operation hour are available on display.



ECO function

- This function supports economical crane operation.

Crane operation

- It limits the maximum engine speed to reduce the fuel consumption and noise.

Semi-automatic outriggers leveling



- The new outrigger system facilitates the process of outrigger setting. The vertical cylinders extend and automatically stop at horizontal position while operating semi-automatic leveling switch.

Remote control Camera Cleaner (Option)

NEW



- Air is used to blow water drops on the camera lens. Therefore the camera can be cleaned from the cabin by the operator.

Note) Not available for the Human detect assist camera.
Note) Sticky water drops and/or mud cannot be blown off.

Bluetooth Radio

NEW



- Bluetooth function has been added. Operator is able to connect other devices such as smart phone.

Bluetooth® is a registered trademark of the Bluetooth SIG, Inc.

Progressive features



▲ Right-rear camera



▲ LED working light



▲ LED ACS outside indicator



▲ LED head lamp with Hi and Lo selector



▲ LED working light (Boom)



▲ USB & AUX port



▲ 24V accessory socket



▲ Winch view camera



▲ Left-front camera



▲ Left-rear camera



▲ Boom front Camera



▲ LED working light



▲ LED rear lamp

Touch screen control ACS moment limiter

High quality color display is easy to view. Standard feature and simple modes are available.



▲ Standard



▲ Simple

Load factor limit

- It limits the load factor to 80% ~100% of the rated lifting capacity and keep a safe margin.

Working range limit

- It limits the 2 vertical surface range and avoids collision.

K•COR



- The K•COR is data logger system which records working status of crane. Record is extractable by the SD card and capable to confirm through K•COR program.