

Data subject to change without prior notice
Edition 04/2020 © 2020 JMG Cranes S.p.A. All rights reserved
Rev.1 - 04/2020

JMG Cranes S.p.A.

Sales & Service Office

Via Bergamo, 142

26100 Cremona - Italy

t +39 0372 1786738

Production Plant

Via Sito Nuovo 14

29010 Sarmato (PC) - Italy

t +39 0523 8486

e info@jmgcranes.com



Electric Pick & Carry Cranes



MC 300S (metric)
Max Capacity 30.000 kg

www.jmgcranes.com



MC 300S

RADIO-REMOTE CONTROL ON DRIVING, STEERING, BOOM MOVEMENTS, WINCH AND OTHER ACCESSORIES

HYDRAULICALLY TELESCOPING PROPORTIONAL TYPE BOOM

FRONT-WHEELS DRIVE WITH COUNTER ROTATION

FRONT COMPASS TYPE OUTRIGGERS

HYDRAULIC HEAD

REMOVABLE COUNTERWEIGHTS

Optionals:

- HYDRAULIC WINCH
- HYDRAULIC JIB WITH HYDRAULIC EXTENSION
- NON-MARKING TIRES
- HYDRAULIC FORKS
- ATEX CONVERSIONS
- CUSTOMIZED PAINTING

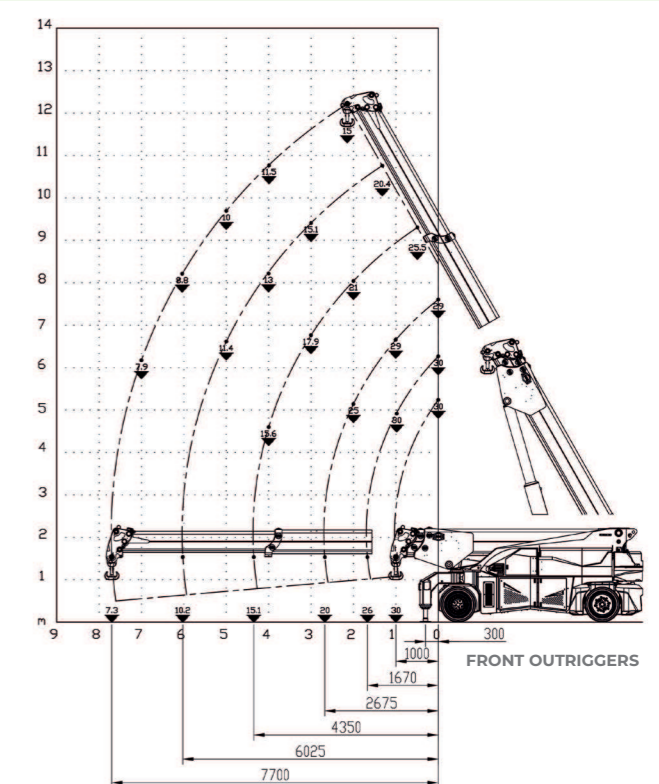
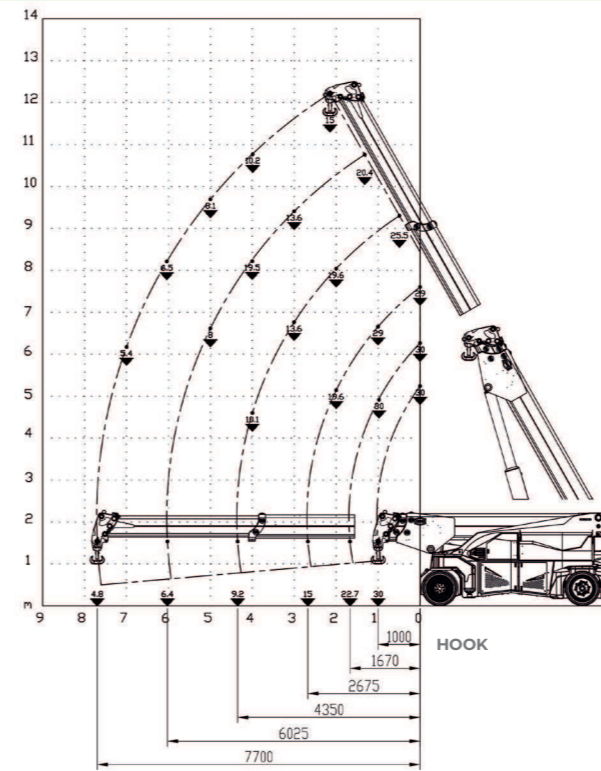


Load charts

Technical features

Max Capacity kg	30.000
Dimension mm	4820x2150x2219

Front-wheels drive. 2 electric motors AC 12 kW 96V. Insulation class H	LMI. Electronic safe load indicator and tilting moment limiter
Total Kg. 29.600 Removable counterweights Kg. 8.700	Automatic braking system on all wheels
96 V - 1125 Ah 8 working hours	Fabricated from preformed and welded quality steel plate
Front n.4 superelastic 355x50-20" Rear n.4 superelastic 355x50-20"	+60°/-5°
Rear Steering angle -90°/+90°	Motor driven pump N°2 23 kW - 96 V AC, 16 kW - 96 V Insulation class H



EU Standards CE

	UNI ISO 4301-2: A1
	2006/42 CE-2014/30 UE-2014/35 UE- 2000/14 e and subsequent modifications
	EN 13000:2014 ANSI/ASME B30.5-2011 and subsequent modifications

Dimension

