

Edition 05/2020 © 2020 JMG Cranes S.p.A. All rights reserved  
Data subject to change without prior notice  
Rev. 1 - 05/2020

## LIGE by JMG Cranes S.p.A.

Sales & Service Office

Via Bergamo, 142

26100 Cremona - Italy

t +39 0372 1786738

Production Plant

Via Sito Nuovo 14

29010 Sarmato (PC) - Italy

t +39 0523 8486

e info@jmgcranes.com



[www.jmgcranes.com](http://www.jmgcranes.com)



## ELECTRIC PICK & CARRY CRANES



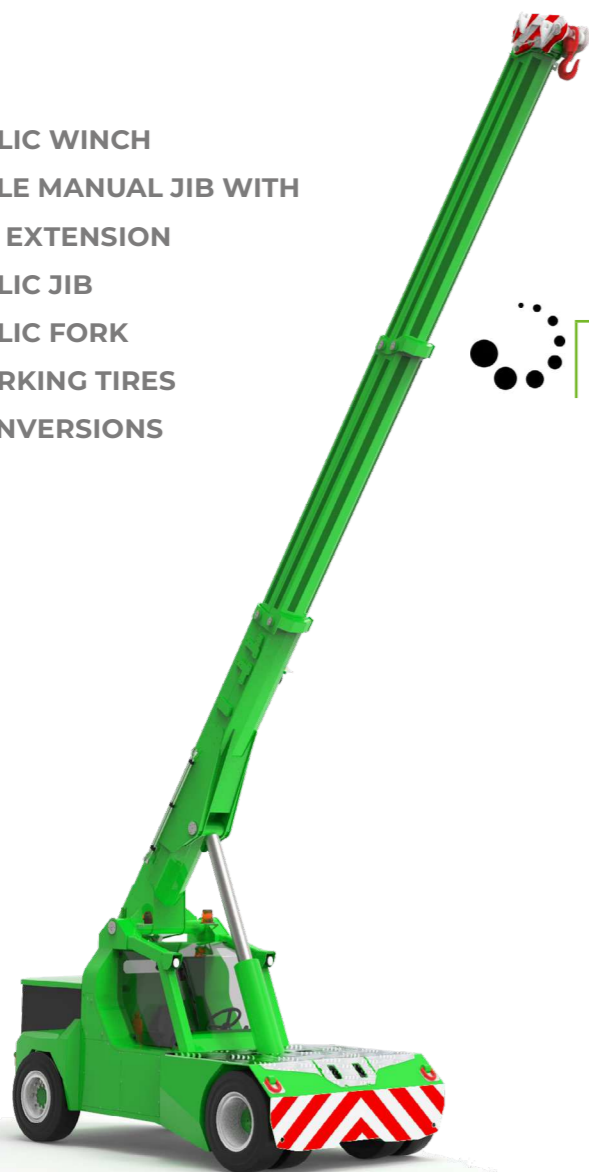
**L120 (metric)**  
Max Capacity 12.000 kg

**LIGE**  
SINCE 1945 By JMG

**ELECTRIC POWERED WITH ZERO EMISSIONS**  
**8 WORKING HOURS**  
**WIDE AND ERGONOMIC CABIN**  
**FRONT WHEELS DRIVE WITH COUNTER ROTATION**  
**COMPACTNESS AND AGILITY**  
**REAR STEERING**

**Optionals:**

- HYDRAULIC WINCH
- BENDABLE MANUAL JIB WITH MANUAL EXTENSION
- HYDRAULIC JIB
- HYDRAULIC FORK
- NON-MARKING TIRES
- ATEX CONVERSIONS

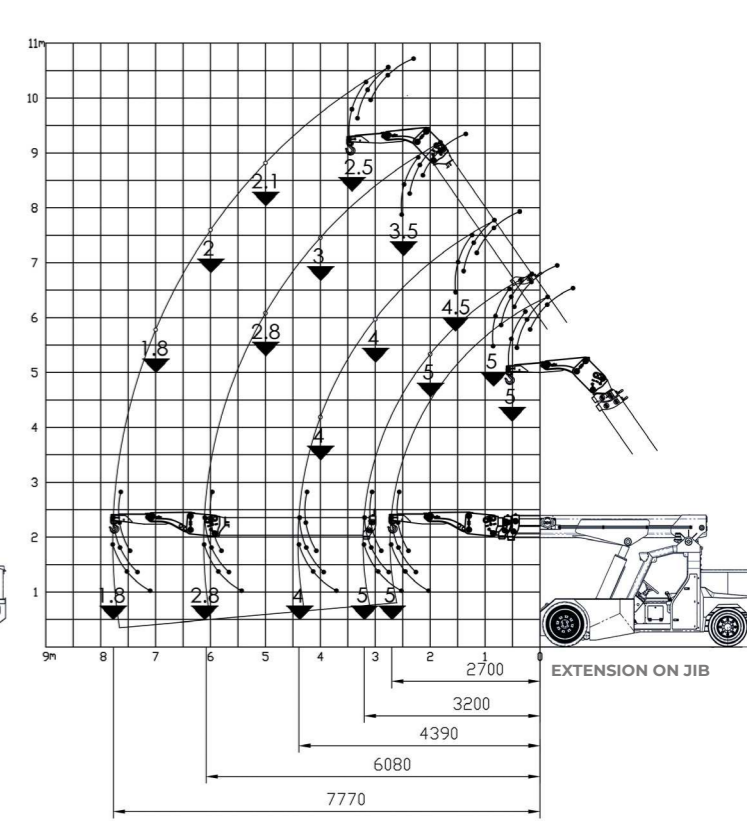
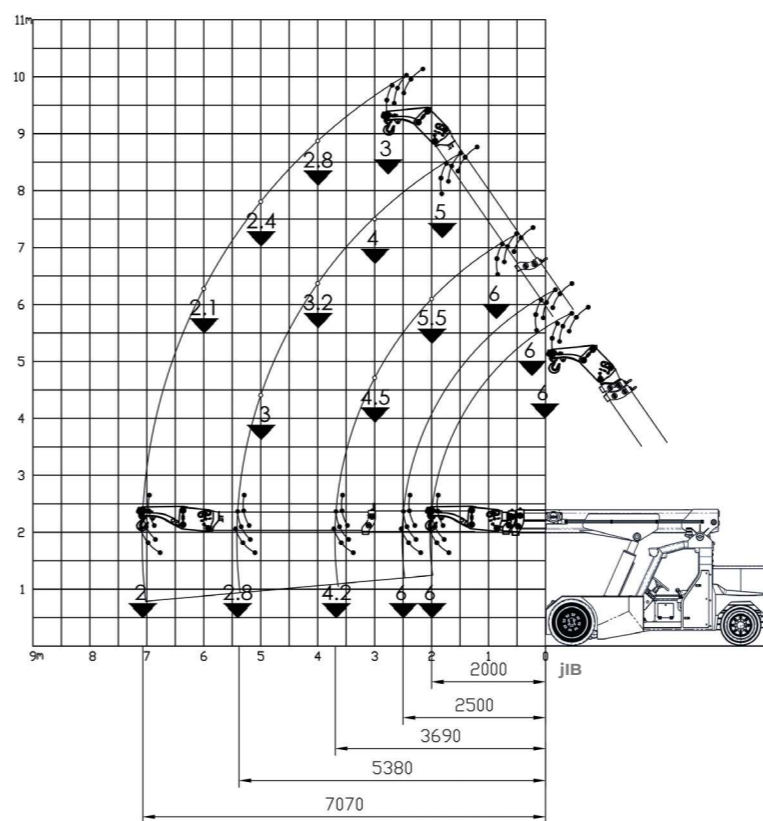
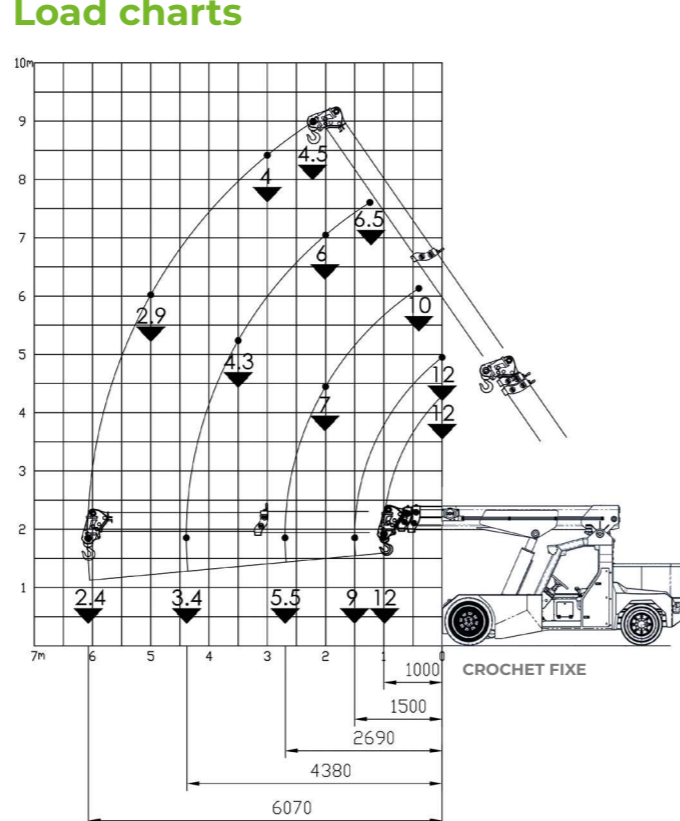


**i**

**Technical features**

Max Capacity kg	12,000	Front-wheels drive. N°2 electric motors AC 8.5 kW 80V. Insulation class H	<b>L.M.L.</b> Electronic safe load indicator and tilting moment limiter
	Dimensions mm	80 V - 840 Ah 8 working hours	Service brake: hydraulic with foot control. Parking and emergency brake: hydraulic with automatic control.
Dimensions mm		Front nr. 4 superelastic 4x300-15" Rear nr. 2 superelastic 2x250-15"	Self-supporting steel structure bent and welded
	Dimensions mm	Rear Steering angle -90°/+90°	+55°/-15°
			Motor driven pump 2x8,5 kW - 80 V AC, Insulation class H

**Load charts**



**EU Standards CE**

**EU Standards CE**

	UNI ISO 4301-2: A1
	2006/42 CE-2014/30 UE-2014/35 UE- 2000/14 and subsequent modifications
	EN 13000:2014 ANSI/ASME B30.5-2011 and subsequent modifications

**Dimensions**

**Dimensions**

