

Data subject to change without prior notice
Edition 04/2020 © 2020 JMG Cranes S.p.A. All rights reserved
Rev.1 - 04/2020



Electric Pick & Carry Cranes

JMG Cranes S.p.A.

Sales & Service Office

Via Bergamo, 142

26100 Cremona - Italy

t +39 0372 1786738

Production Plant

Via Sito Nuovo 14

29010 Sarmato (PC) - Italy

t +39 0523 8486

e info@jmgcranes.com



MC 250S (metric)

Max Capacity 55,000 lbs

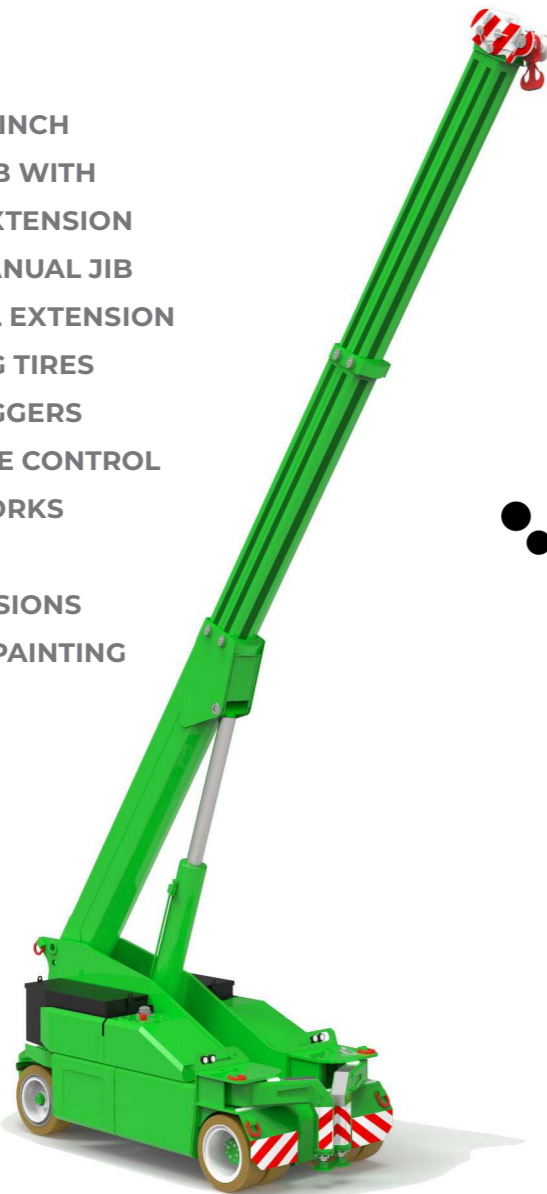
www.jmgcranes.com



HYDRAULICALLY TELESCOPING PROPORTIONAL TYPE BOOM
 FRONT-WHEELS DRIVE WITH COUNTER ROTATION
 180° REAR STEERING
 REMOVABLE COUNTERWEIGHTS

Options :

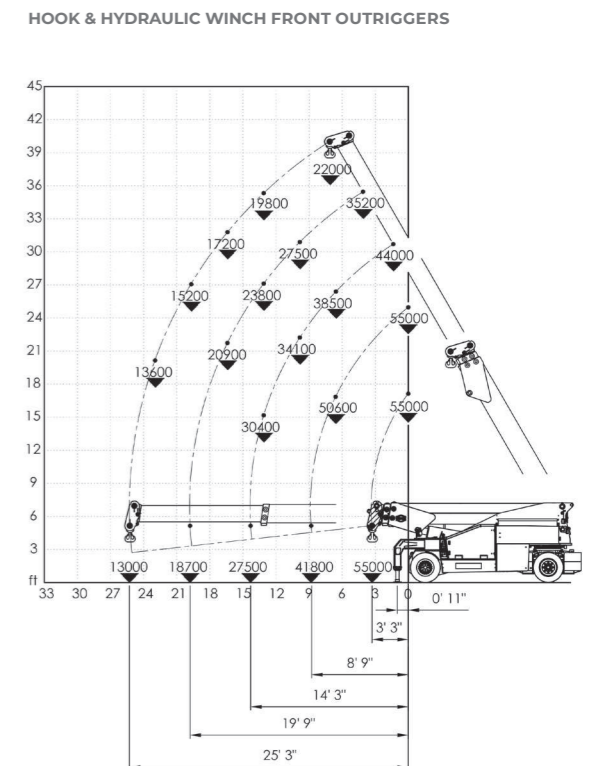
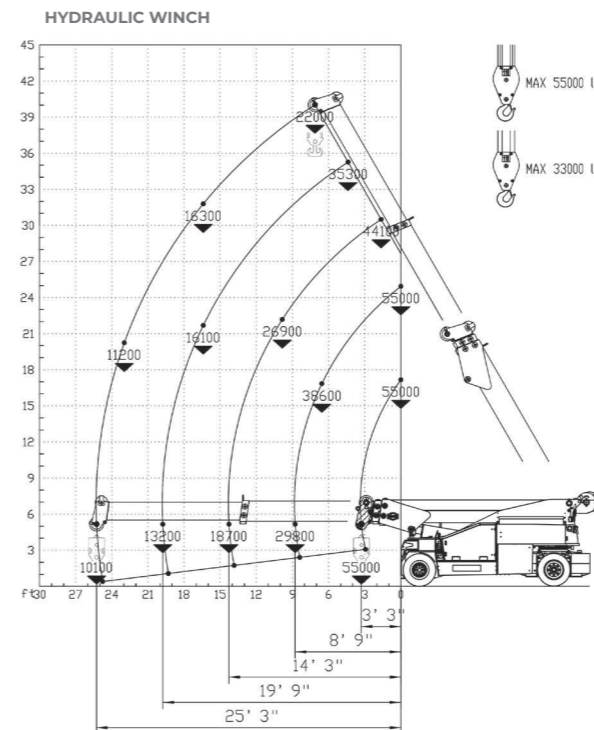
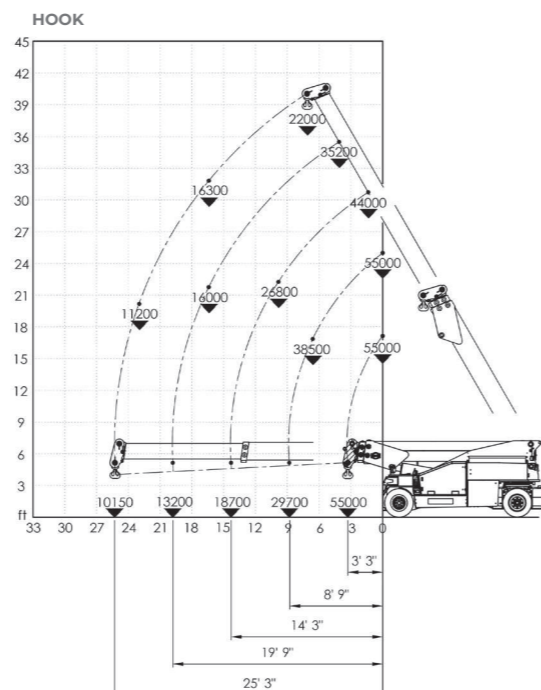
- HYDRAULIC WINCH
- HYDRAULIC JIB WITH HYDRAULIC EXTENSION
- BENDABLE MANUAL JIB WITH MANUAL EXTENSION
- NON-MARKING TIRES
- FRONT OUTRIGGERS
- RADIO REMOTE CONTROL
- HYDRAULIC FORKS
- MAN BUCKET
- ATEX CONVERSIONS
- CUSTOMIZED PAINTING



Technical features

Max Capacity lbs	55,000	Front-wheels drive. 2 electric motors AC 12 kW 96V Insulation class H	LMI. Electronic safe load indicator and tilting moment limiter
	Dimensions inch	Total lbs 64,000 Removable counterweights lbs 16,000	Hydraulically foot controlled service brake on all wheels, hydraulically automatic or button controlled parking brake on front wheels
Dimensions inch		96 V - 1125 Ah 8 working hours	Fabricated from preformed and welded quality steel plate
	Dimensions inch	Front nr. 4 superelastic 355/50-20" Rear nr. 2 superelastic 355/50-20"	+60°/-7°
Dimensions inch		Rear Steering angle -90°/+90°	Motor driven pump 1x23 kW - 96 V AC.

Load charts



EU Standards CE

	UNI ISO 4301-2: A1
	2006/42 CE-2014/30 UE-2014/35 UE- 2000/14 e and subsequent modifications
	EN 13000:2014 ANSI/ASME B30.5-2011 and subsequent modifications

Dimensions

