

# Pick&Carry Cranes



**MC250**  
ELECTRIC BATTERY OPERATED CRANE  
MAX CAPACITY 55,000 lbs



**JMG USA**  
4517 North Point Blvd, Baltimore, MD 21219  
(800) 632-7226 | [mikeb@jmgusa.com](mailto:mikeb@jmgusa.com) | [www.jmgusa.com](http://www.jmgusa.com)





# MC250

<b>MAXIMUM LIFT:</b>	55,000 lbs
<b>MAXIMUM REACH:</b>	40'
<b>CRANE WEIGHT:</b>	53,680 lbs, including 10,120 lbs of removable counterweight
<b>MOTOR:</b>	Electric; Front driven by nr. 2 motors; 12kW 96V AC
<b>BATTERY:</b>	96V 1125 Ah; Battery and electrolyte level indicator on dashboard; Full charge provides 8 working hours.
<b>BRAKES:</b>	Hydraulic foot pedal braking system on all wheels; hydraulic automatic or button controlled brake on front wheels
<b>DRIVER PROTECTION:</b>	Steel-framed safety glass on top, front, rear and right side of operator provides protection and full visibility
<b>FRAME:</b>	Fabricated from preformed, welded high-quality steel plating with built-in counterweight
<b>WHEELS:</b>	Front nr. 4 super elastic 355 x 50-20" Rear nr. 2 super elastic 355 x 50-20"
<b>BOOM:</b>	Boom angle 60 degrees/-7 degrees. Three (3) hydraulically telescoping boom elements; Fabricated from preformed, welded high-quality steel.
<b>HYDRAULIC SYSTEM:</b>	Powered by a silenced gear pump (23kW); Actuators controlled by electro distributor with an electronic joystick; Filter and safety valve; 22MPa working pressure
<b>STEERING:</b>	Rear steering by hydraulic motor controlled by hydrostatic power steering with load-sensing priority valve
<b>MOTOR PUMP:</b>	Electric pumps 16kW 96V AC; 12kW 96V AC
<b>LMI:</b>	Electronic Load Moment Indicator (LMI) displays load lifted, maximum admitted load, tilting percentage, operating radius, angle, outreach and more. Includes warning lights to alert operator of abnormal status.
<b>AVAILABLE OPTIONS:</b>	Hydraulic winch; front outriggers; manual or hydraulic jib; man basket; chain hoist; fork attachment; on-board battery charger; watering system for battery; remote control; ATEX conversions; closed cabin; custom color; non-marking tires

Models may differ from images shown. Data above is subject to change without notice.



Articulated rear group



Mobile head

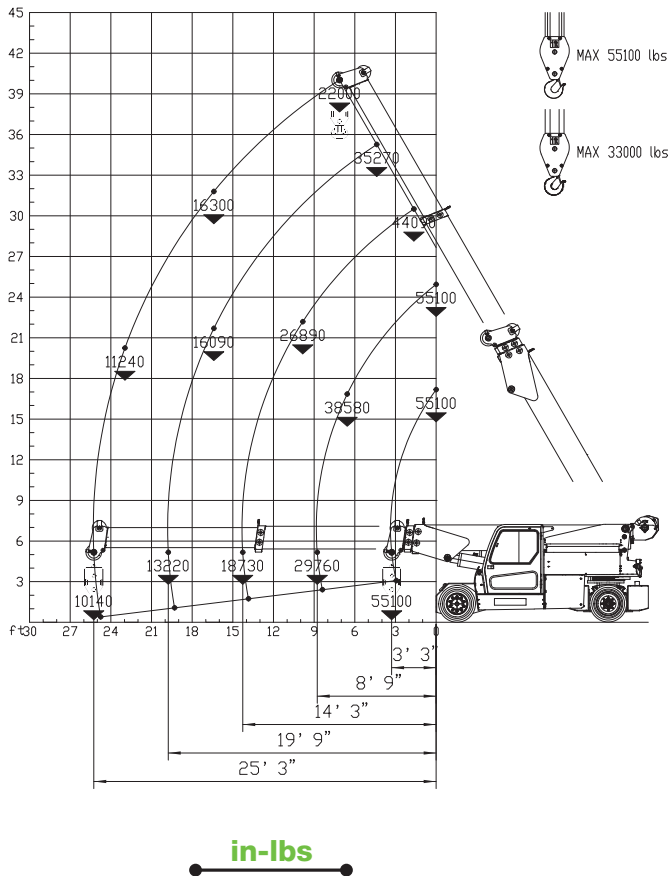


Optional front outriggers



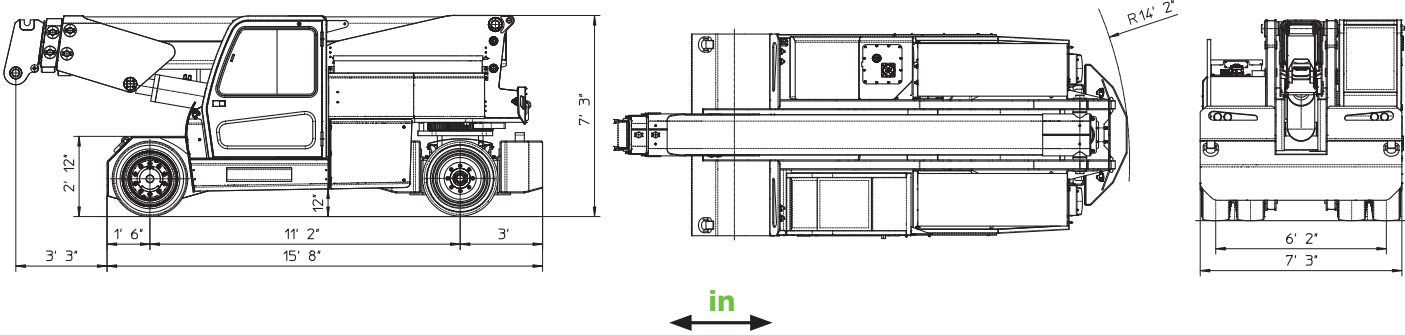
Operator seat, joystick and controls

## LOAD CHART HYDRAULIC WINCH



in-lbs

## DIMENSIONS



in

