
Manual # 99905403

10/72 Technical Specifications

Revision Date 20120202



IOWA MOLD TOOLING CO., INC.

PO Box 189

Garner, IA 50438

Tel: 641-923-3711 FAX: 641-923-2424

Website: <http://www.imt.com>

Copyright © 2012 Iowa Mold Tooling Co., Inc.
All rights reserved

No part of this publication may be reproduced, stored in a retrieval system, or transmitted in any form or by any means, electronic, mechanical, photocopying, recording or otherwise without the prior written permission of Iowa Mold Tooling Co., Inc.

Iowa Mold Tooling Co., Inc. is an Oshkosh Corporation company.

Printed on 7 February, 2012

Courtesy of Crane.Market

Contents

| | |
|---|-----------|
| Technical Data and Charts | 3 |
| 10/72 Specifications..... | 4 |
| Dimensions & Performance..... | 5 |
| 10/72 Series Single Link Capacity Charts | 6 |
| 10/72 Series Double Link Capacity Charts | 11 |
| Dimensions | 16 |
| Mounting Dimensions..... | 17 |
| Dimensions, Fixed Stabilizer Legs | 18 |
| Dimensions, Manual Swing-Up Stabilizer Legs | 19 |
| Swing Clearance Drawings..... | 22 |
| Single Link Swing Clearance | 22 |
| Double Link Swing Clearance..... | 23 |
| Pressure Settings & Hydraulic Schematics | 25 |
| 10/72 Pressure Settings, Hydrocontrol Controls..... | 25 |
| 10/72 Hydraulic Schematic, Hydrocontrol Controls..... | 27 |
| 10/72 Pressure Settings, Danfoss Controls | 28 |
| 10/72 Hydraulic Schematic, Danfoss Controls | 30 |

CHAPTER 1

Technical Data and Charts

In This Chapter

| | |
|--|----|
| 10/72 Specifications | 3 |
| Dimensions & Performance..... | 5 |
| 10/72 Series Single Link Capacity Charts | 6 |
| 10/72 Series Double Link Capacity Charts..... | 11 |
| Dimensions..... | 16 |
| Mounting Dimensions..... | 17 |
| Dimensions, Fixed Stabilizer Legs | 18 |
| Dimensions, Manual Swing-Up Stabilizer Legs..... | 19 |
| Swing Clearance Drawings | 22 |

10/72 Specifications

| 10/72 | 1-HYDRAULIC | 2-HYDRAULIC | 3-HYDRAULIC | 4-HYDRAULIC | 5-HYDRAULIC |
|--|---------------------------|--------------------------|--------------------------|--------------------------|--------------------------|
| Crane Rating (Single Link) | 72,330 ft-lb (10.0 tm) | 70,160 ft-lb (9.7 tm) | 67,990 ft-lb (9.4 tm) | 66,545 ft-lb (9.2 tm) | 65,100 ft-lb (9.0 tm) |
| Crane Rating (Double Link) | 70,160 ft-lb (9.7 tm) | 68,715 ft-lb (9.5 tm) | 66,545 ft-lb (9.2 tm) | 64,375 ft-lb (8.9 tm) | 62,925 ft-lb (8.7 tm) |
| Maximum Horizontal Reach | 18'-0" (5.5 m) | 24'-7" (7.5 m) | 31'-10" (9.7 m) | 38'-9" (11.8 m) | 45'-11" (14.0 m) |
| Maximum Vertical Reach | 25'-7" (7.8 m) | 32'-3" (9.8 m) | 39'-4" (12.0 m) | 46'-5" (14.1 m) | 53'-4" (16.3 m) |
| Capacity - Single Link Cranes | | | | | |
| Maximum Capacity | 9280 lb (4210 kg) | 8710 lb (3950 kg) | 8510 lb (3860 kg) | 8005 lb (3630 kg) | 7560 lb (3430 kg) |
| Max Capacity @ Max Reach | 4055 lb (1840 kg) | 2800 lb (1270 kg) | 2005 lb (910 kg) | 1475 lb (670 kg) | 1100 lb (500 kg) |
| Capacity - Double Link Cranes | | | | | |
| Maximum Capacity | 9945 lb (4510 kg) | 9435 lb (4280 kg) | 8795 lb (4070 kg) | 8530 lb (3870 kg) | 8135 lb (3690 kg) |
| Max Capacity @ Max Reach | 3945 lb (1790 kg) | 2710 lb (1230 kg) | 1940 lb (880 kg) | 1435 lb (650 kg) | 1060 lb (480 kg) |
| Crane Weight** | 2380 lb (1080 kg) | 2615 lb (1185 kg) | 2835 lb (1285 kg) | 3030 lb (1375 kg) | 3210 lb (1455 kg) |
| Hook Approach | | | | | |
| Vertical | 9'-8" (2.94 m) | 9'-4" (2.84 m) | 9'-0" (2.74 m) | 8'-8" (2.64 m) | 8'-4" (2.54 m) |
| Horizontal | 2'-7" (0.79 m) | 2'-9" (0.84 m) | 2'-11" (0.89 m) | 3'-1" (0.94 m) | 3'-3" (1.0 m) |
| Center of Gravity-Stored (Single Link) | | | | | |
| Vertical | 24" (604 mm) | 25" (633 mm) | 26" (662 mm) | 27" (688 mm) | 27.7" (704 mm) |
| Horizontal (C/L Rotation to Bridge) | 10.6" (270 mm) | 10.5" (265 mm) | 10" (255 mm) | 9.3" (236 mm) | 9" (228 mm) |
| Center of Gravity-Stored (Double Link) | | | | | |
| Vertical | 25" (637 mm) | 26" (665 mm) | 27.4" (695 mm) | 28" (714 mm) | 28.7" (729 mm) |
| Horizontal (C/L Rotation to Bridge) | 10" (256 mm) | 10" (255 mm) | 9.8" (250 mm) | 9" (229 mm) | 8.7" (221 mm) |

* Crane rating (ft-lb) is the rated load (lb) multiplied by the respective distance (ft) from the centerline of rotation with all extensions retracted, and the inner and outer booms in a horizontal position, per ANSI B30.22.

** Crane weight is for standard single-link crane with tank & mounting kit. Does not include stabilizers, oil. Add 35 lb (15 kg) for double link.

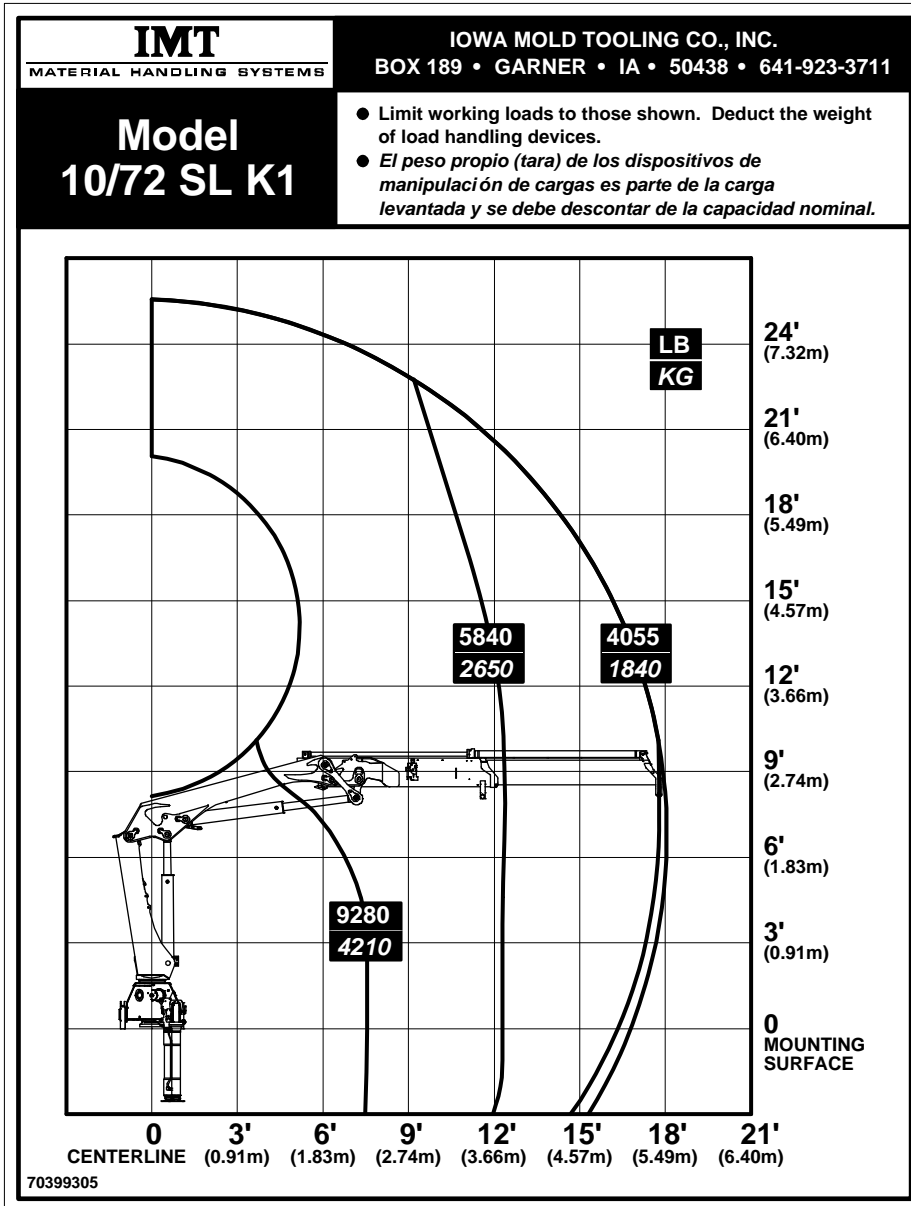
Dimensions & Performance

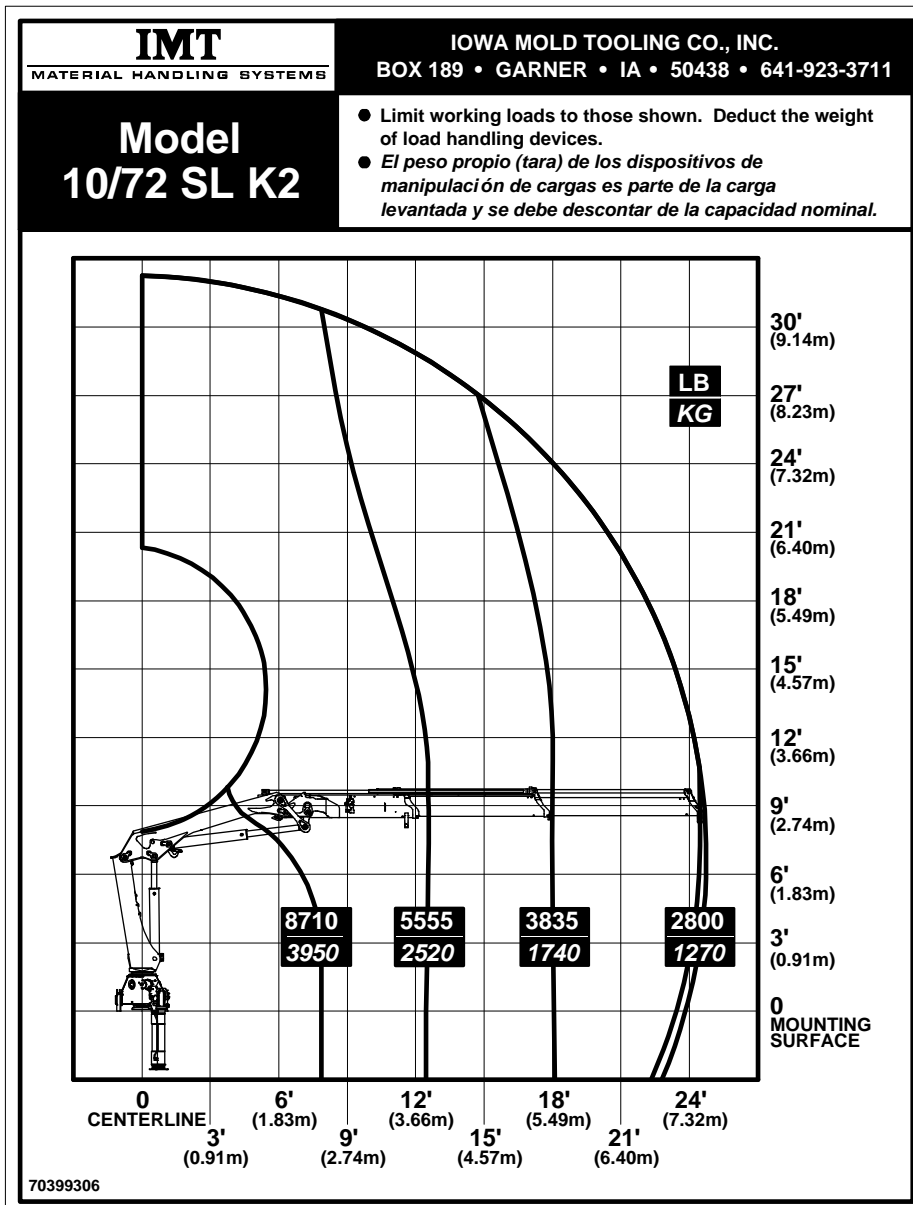
| DIMENSIONS & PERFORMANCE | |
|--|---|
| Crane Storage Height | 7'-0" (2135 mm) |
| Width | 7'-9" (2350 mm) |
| Mounting Space | 2'-5" (747 mm) |
| Maximum Swing Clearance (from top of chassis frame) | 21.5" (545 mm) at 7'-5" (2251 mm) (Single) or 7'-6" (2276 mm) (Double) |
| Rotational Torque | 9665 ft-lb (1.3 tm) |
| Rotation | 420 degrees |
| Optimum Pump Performance | 10.5 GPM (40 L/min) |
| System Pressure | 4785 psi (330 bar) |
| Oil Reservoir Capacity | 14.5 gal (55 L) |

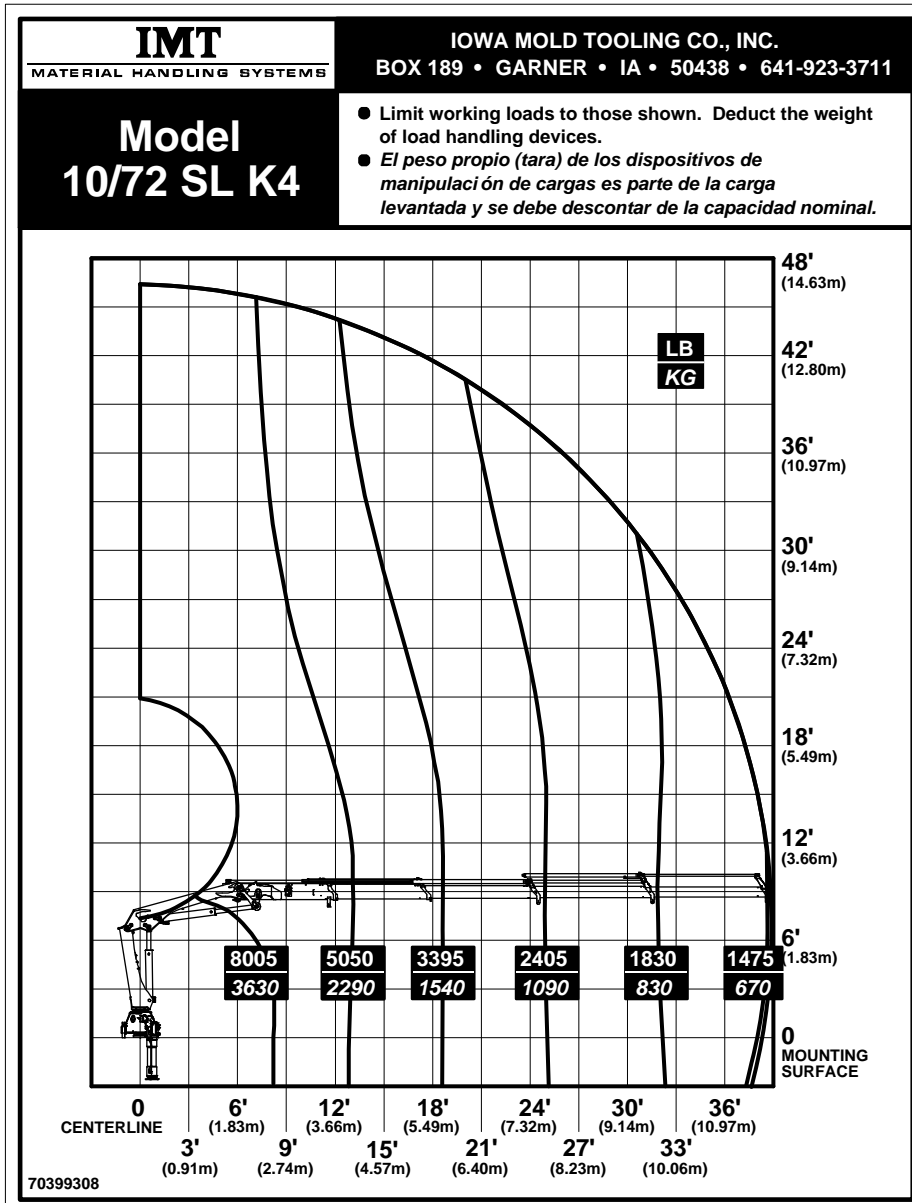
| STABILIZERS | |
|--|-------------------|
| Stabilizer Pad Diameter | 6" (158 mm) |
| Stabilizer Weights | |
| Standard Man Out/Hyd Down, Fixed | 355 lb (160 kg) |
| Standard Man Out/Hyd Down, Swing-Up | 365 lb (165 kg) |
| Extended Reach Hyd Out/Down, Fixed | 410 lb (185 kg) |
| Extended Reach Hyd Out/Down, Swing Up | 420 lb (190 kg) |
| Stabilizer Spread, Standard | 13'-8" (4165 mm) |
| Stabilizer Spread, Extended Reach | 16'-10" (5140 mm) |

| CHASSIS SPECIFICATIONS | |
|-------------------------------|--------------------------------|
| Front Axle Rating (GAWR) | 8000 lb (3630 kg) |
| Rear Axle Rating (GAWR) | 16,000 lb (7260 kg) |
| Resistance to Bending Moment | 1,080,000 in-lb (124,430 kg-m) |

10/72 Series Single Link Capacity Charts





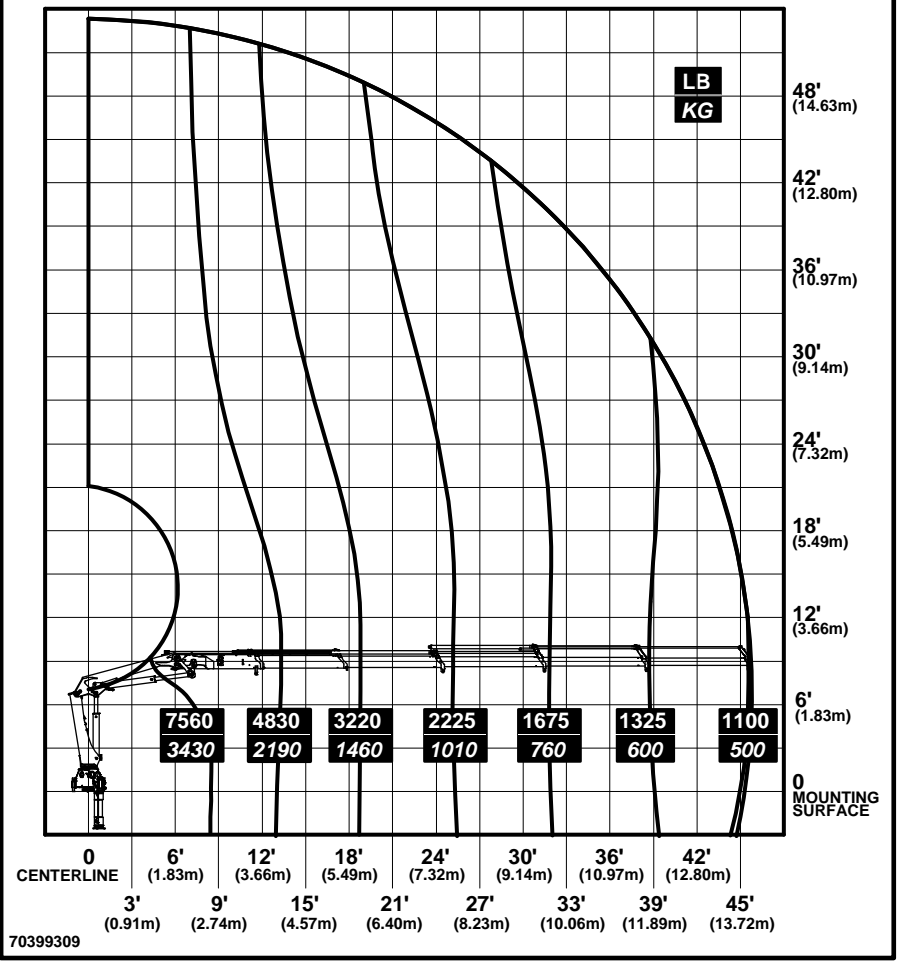


IMT
MATERIAL HANDLING SYSTEMS

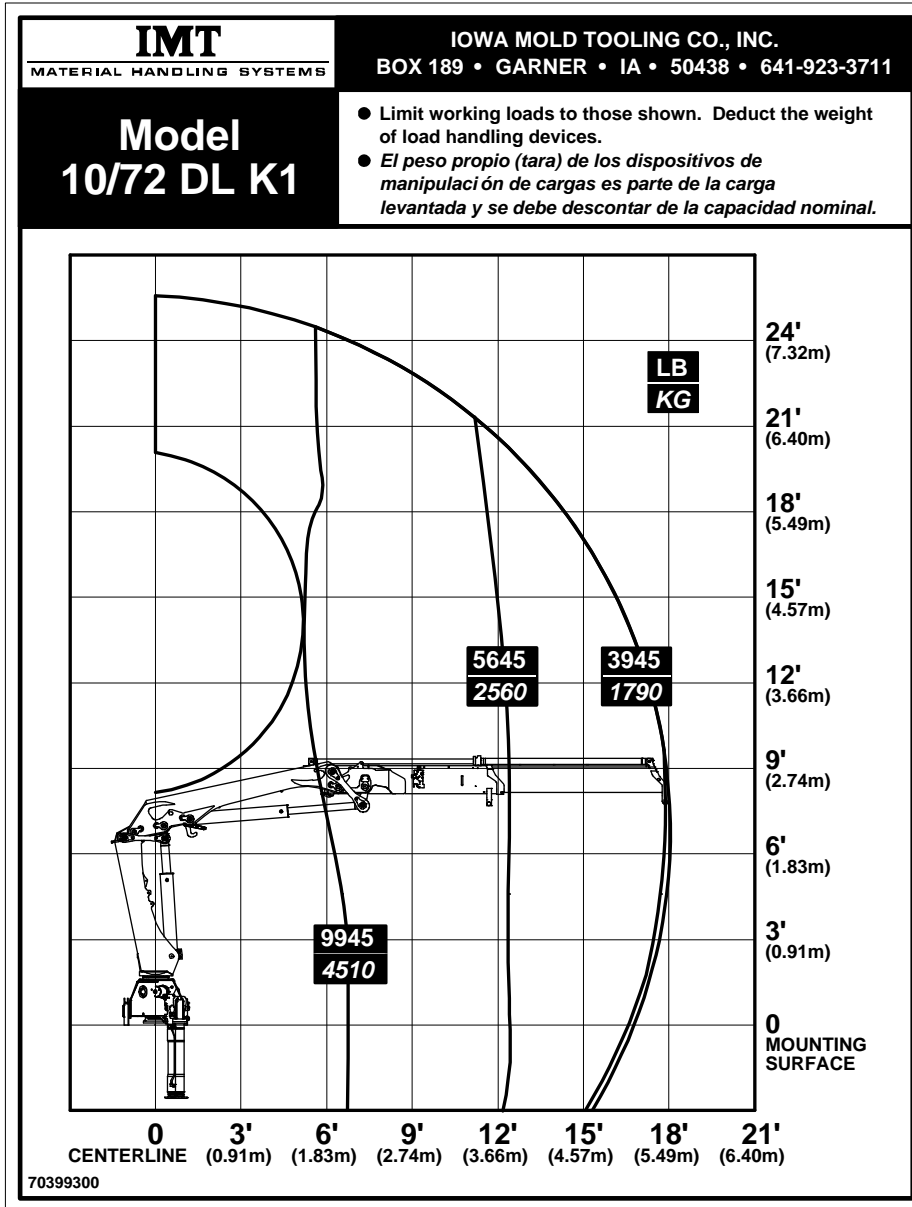
IOWA MOLD TOOLING CO., INC.
BOX 189 • GARNER • IA • 50438 • 641-923-3711

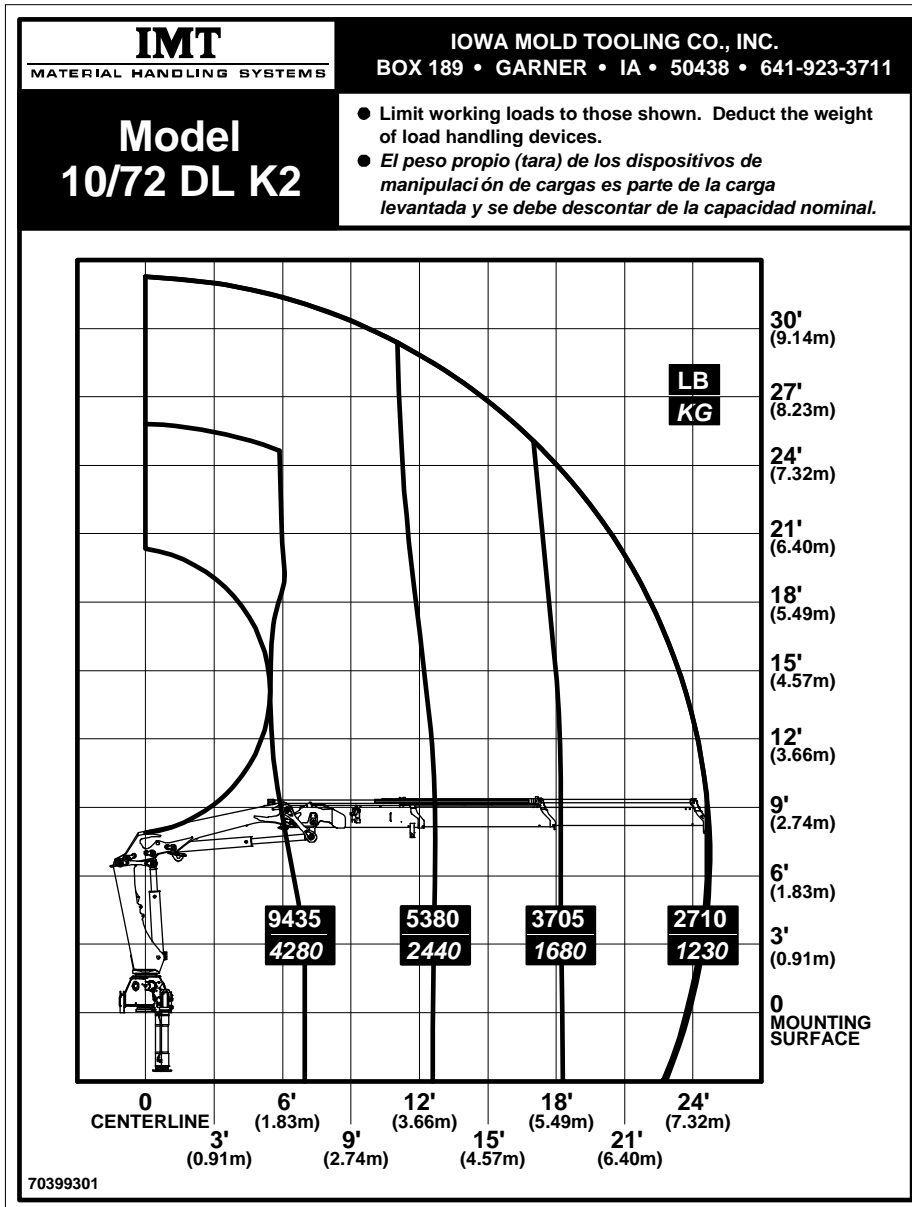
**Model
10/72 SL K5**

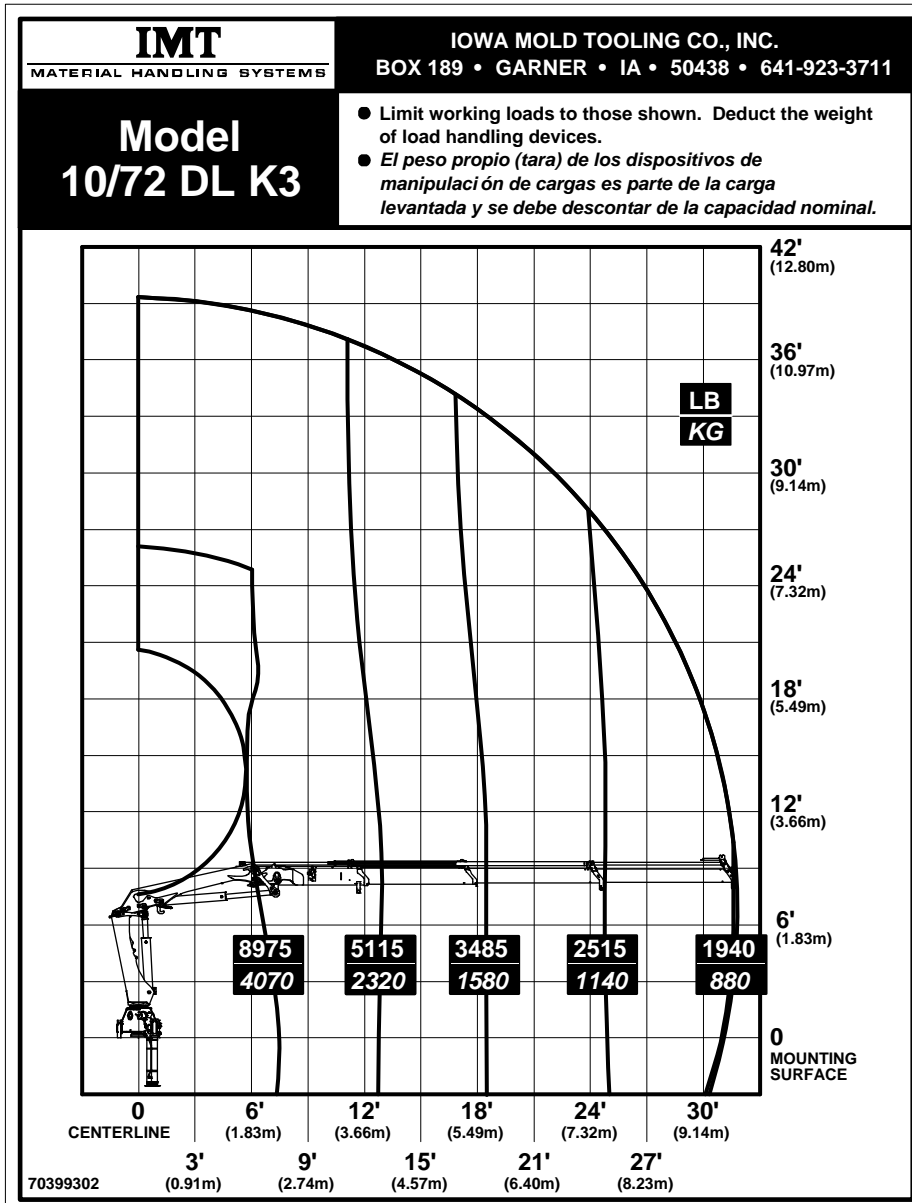
- Limit working loads to those shown. Deduct the weight of load handling devices.
- El peso propio (tara) de los dispositivos de manipulación de cargas es parte de la carga levantada y se debe descontar de la capacidad nominal.



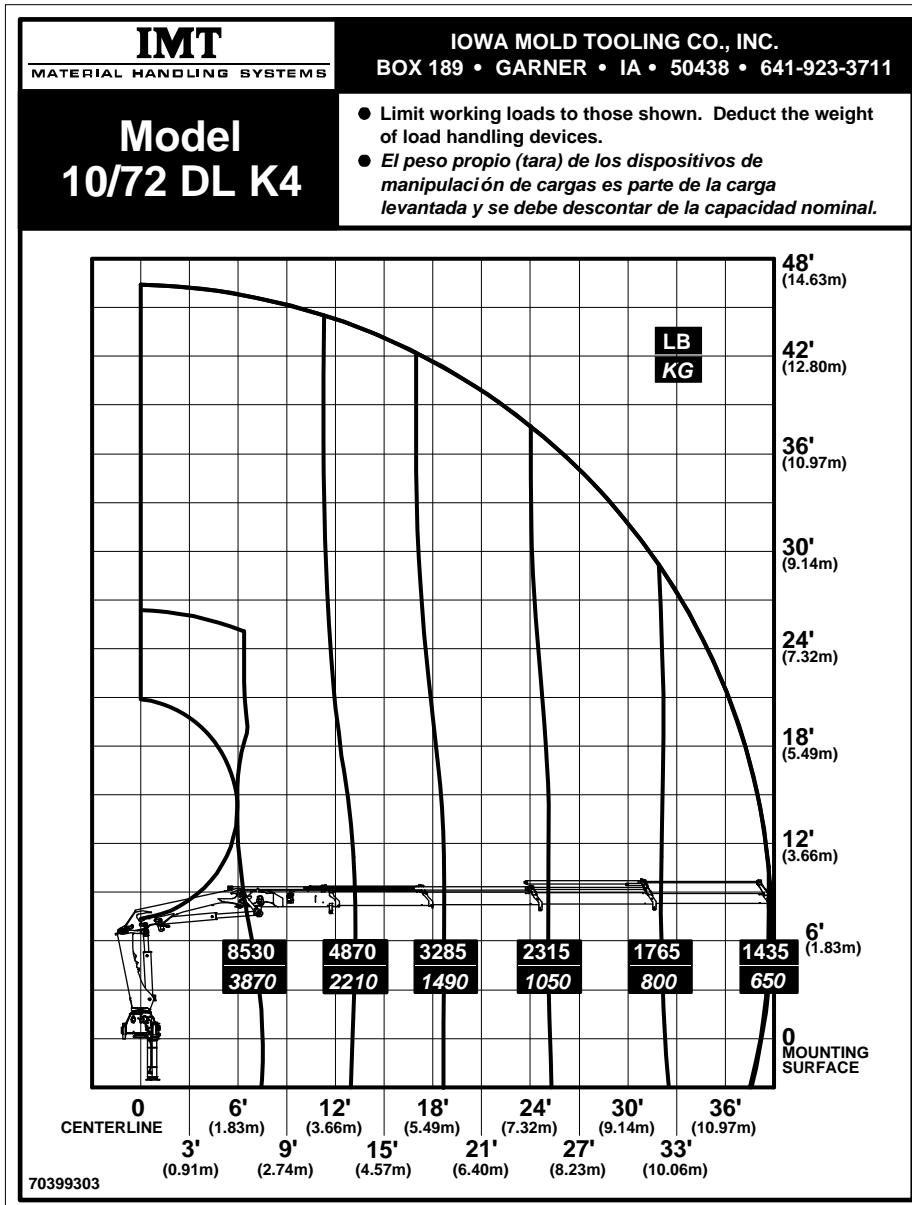
10/72 Series Double Link Capacity Charts

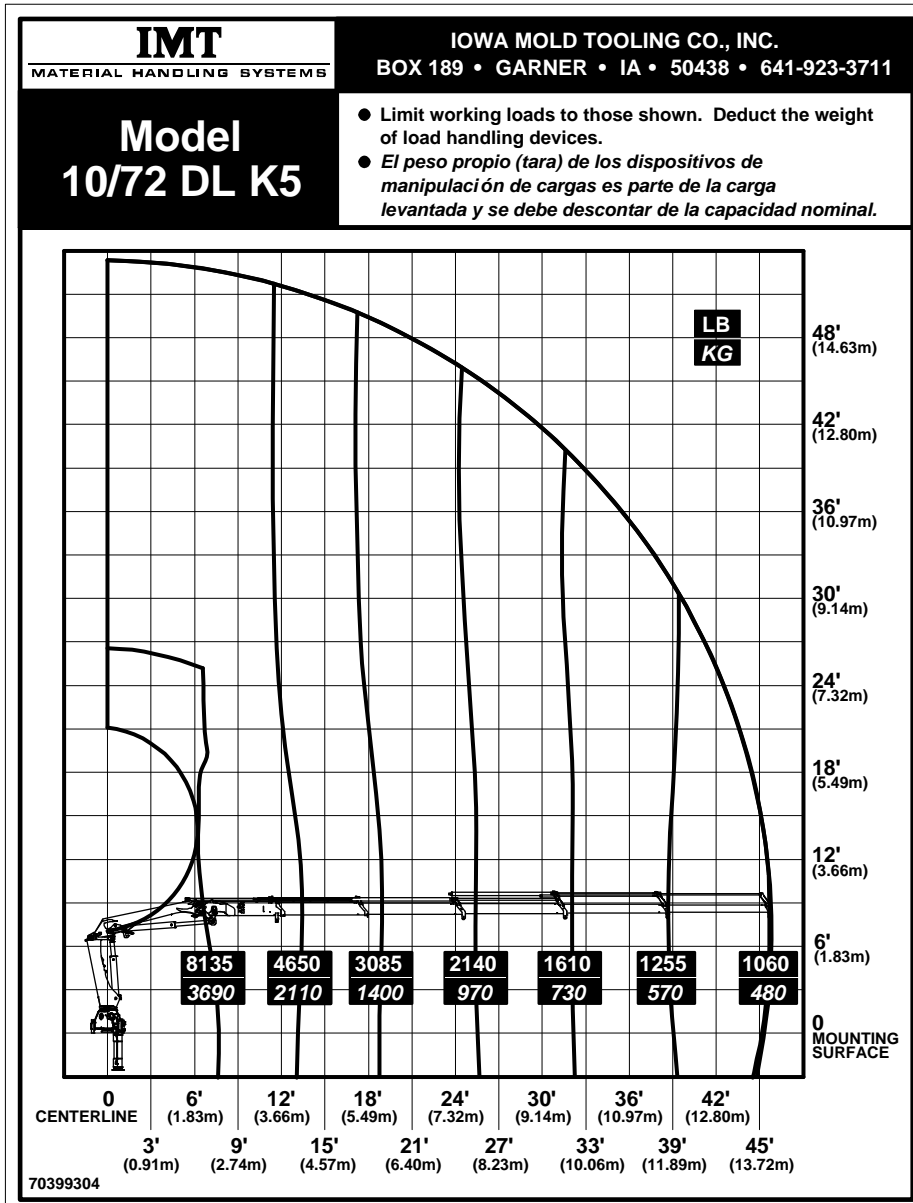




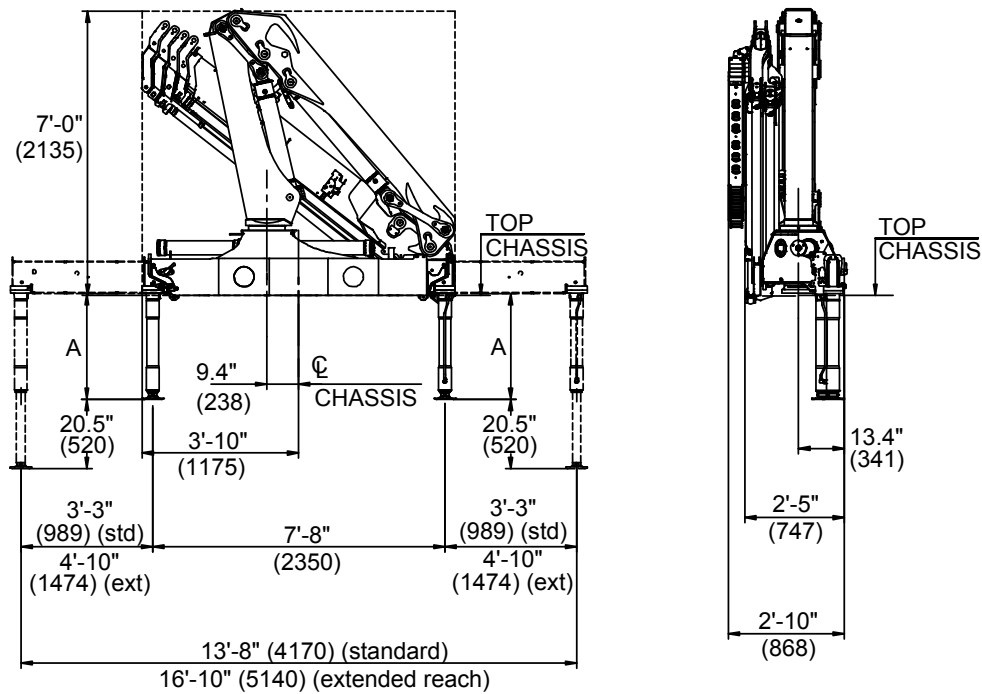
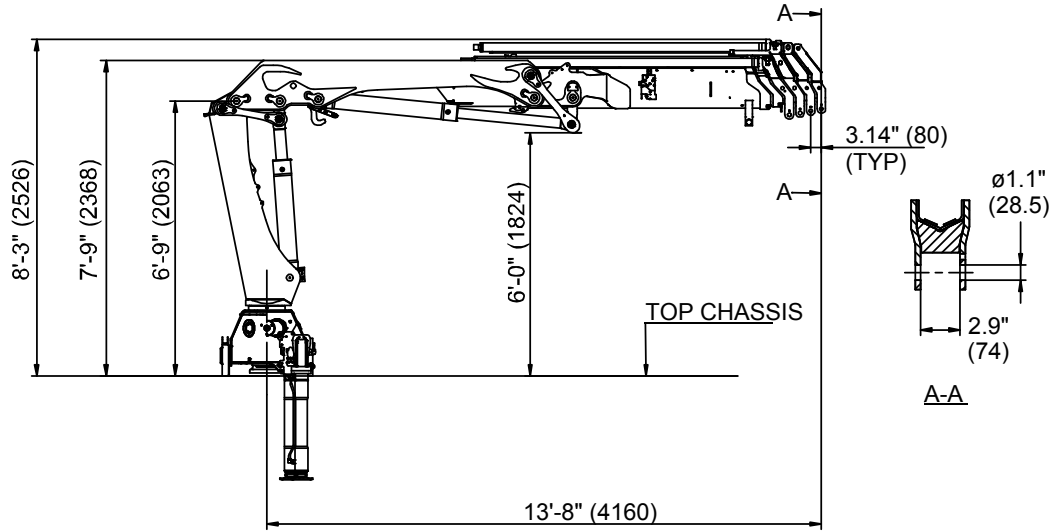


70399302





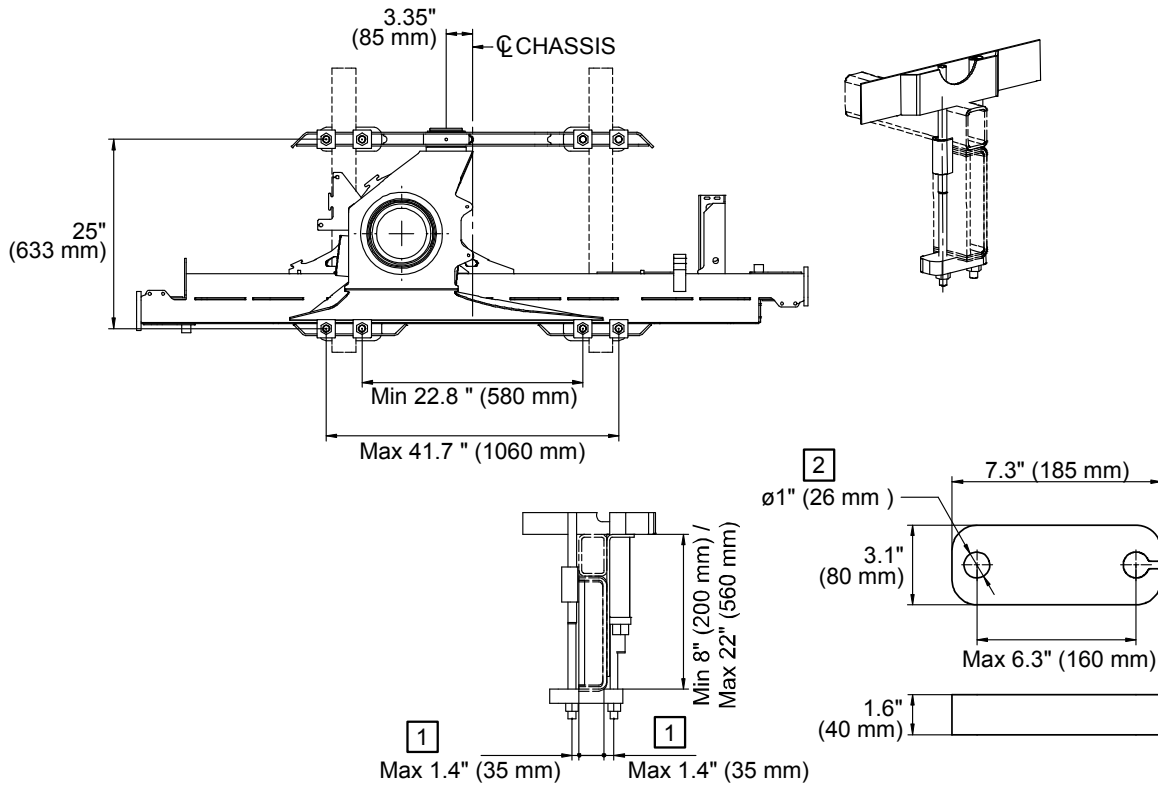
Dimensions



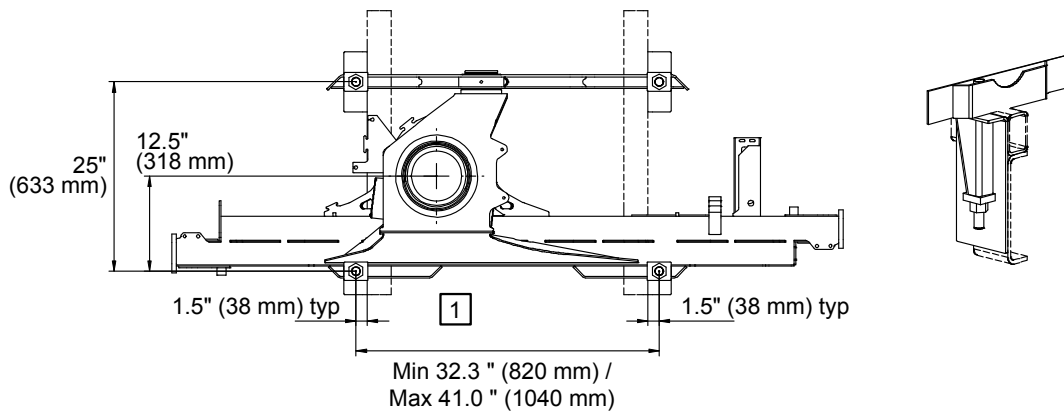
Double link crane shown. Single link dimensions are the same.
 Dimensions shown in ft-in (mm).

Mounting Dimensions

8 mounting holes - M24 x 2 bolt



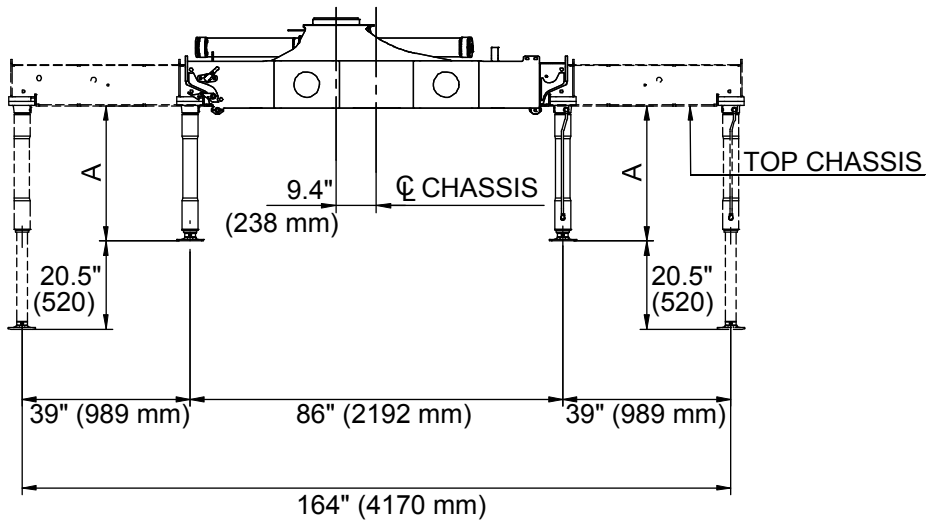
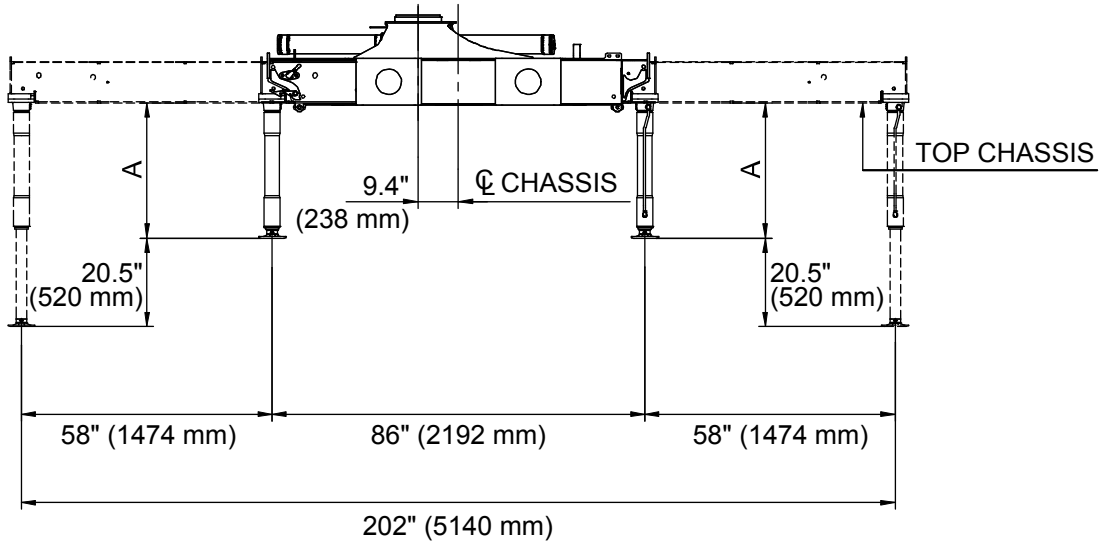
4 mounting holes - M30 x 2 bolt


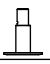



NOTES (SEE REFERENCE NUMBER IN BOX):

- 1 Value dictated by strength concerns.
- 2 Mounting hole diameter.

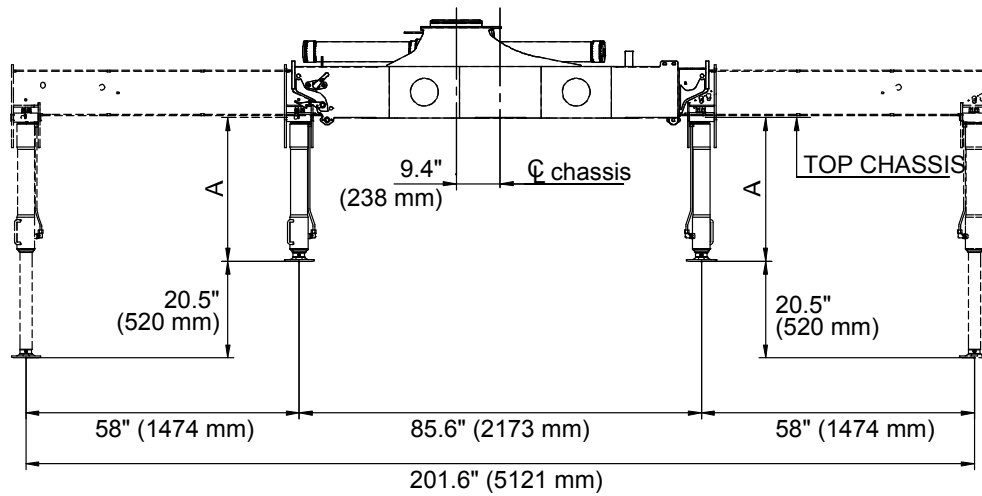
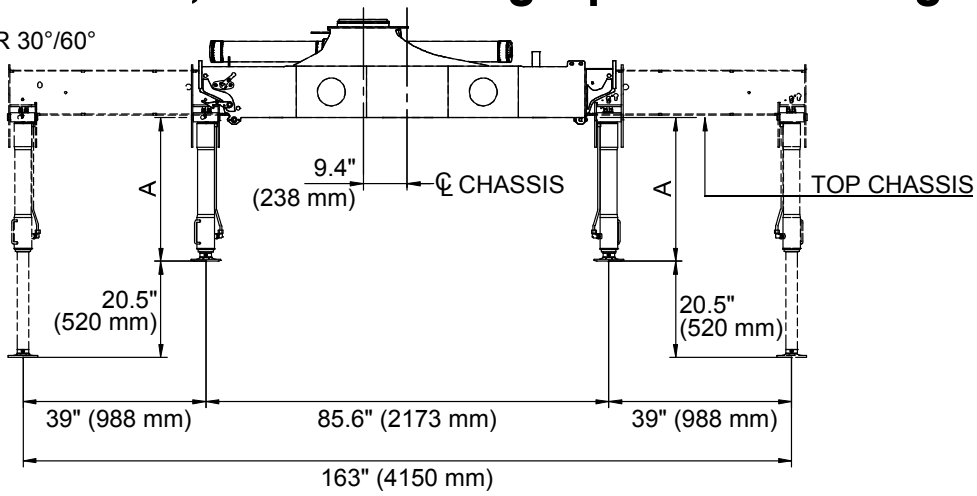
Dimensions, Fixed Stabilizer Legs






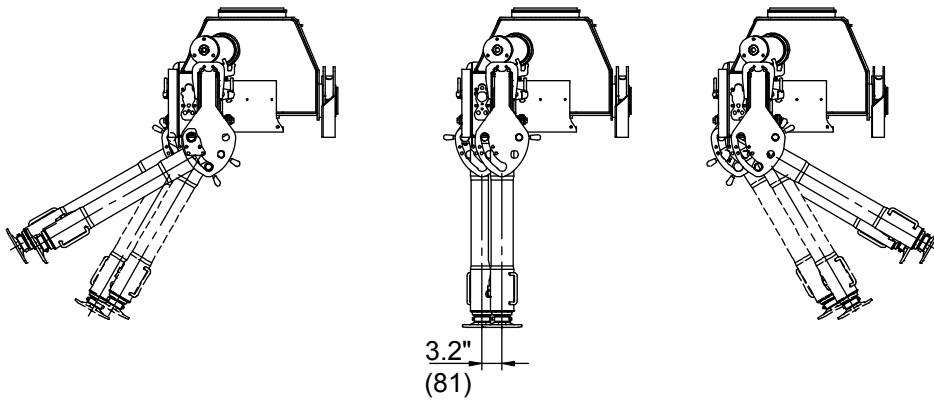
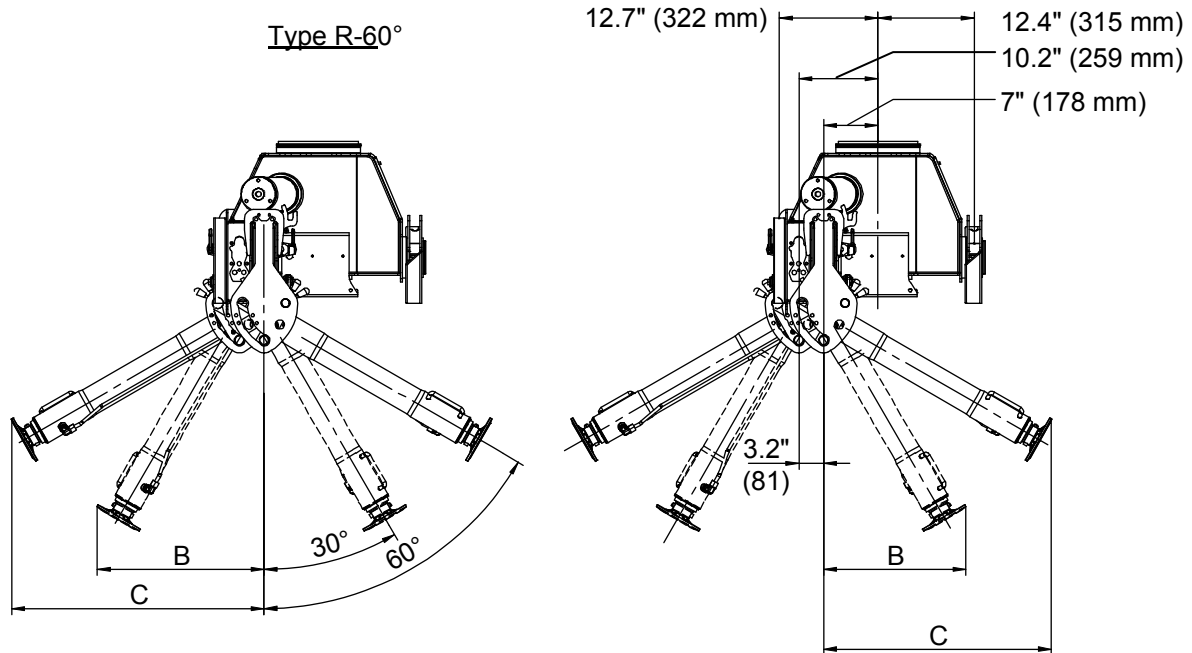
| | | | |
|---|---|---|---|
| |  |  |  |
| A | 30.6" (777) | 34.5" (877) | 38.5" (977) |




Dimensions, Manual Swing-Up Stabilizer Legs

Type SR 30°/60°

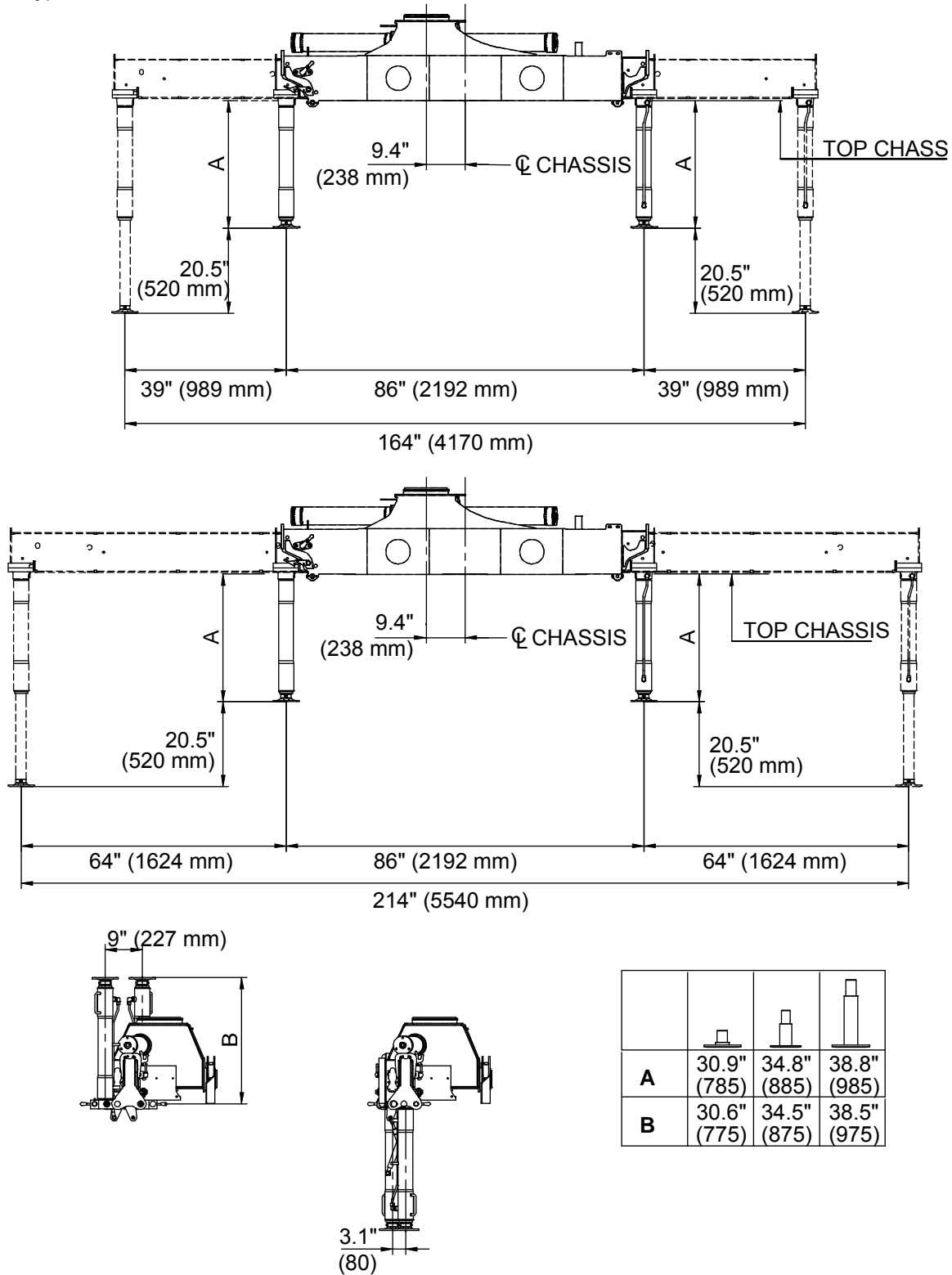


| | | | |
|---|---|---|---|
| |  |  |  |
| A | 30.6" 775 | 34.5" 875 | 38.5" 975 |



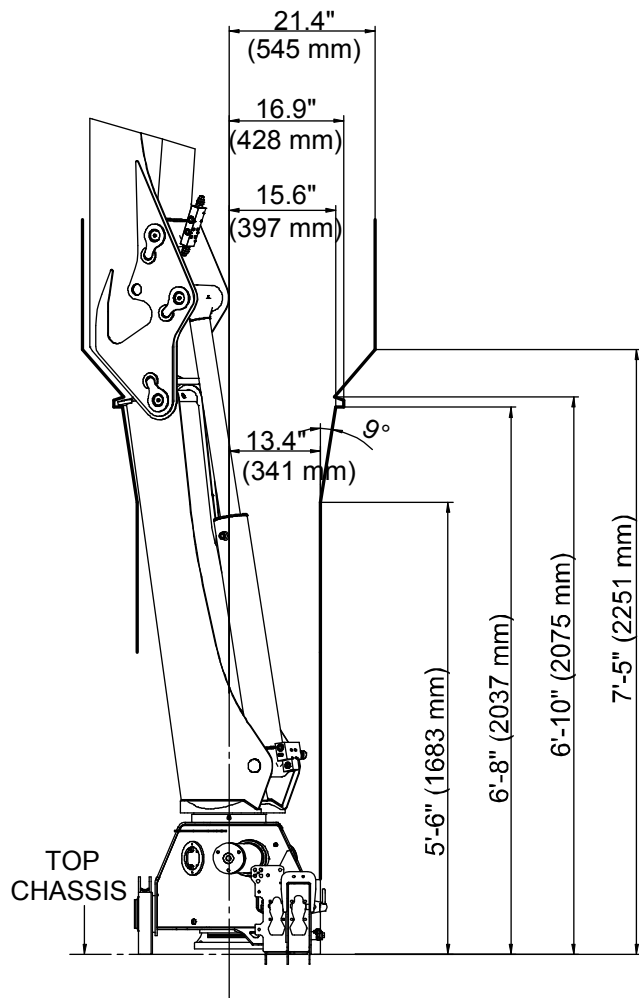
| |  |  |  |
|---|---|---|---|
| B | 18.3" (465) | 20.3" (515) | 22.2" (565) |
| C | 29.3" (745) | 32.7" (831) | 36.1" (918) |

Type SV 180°

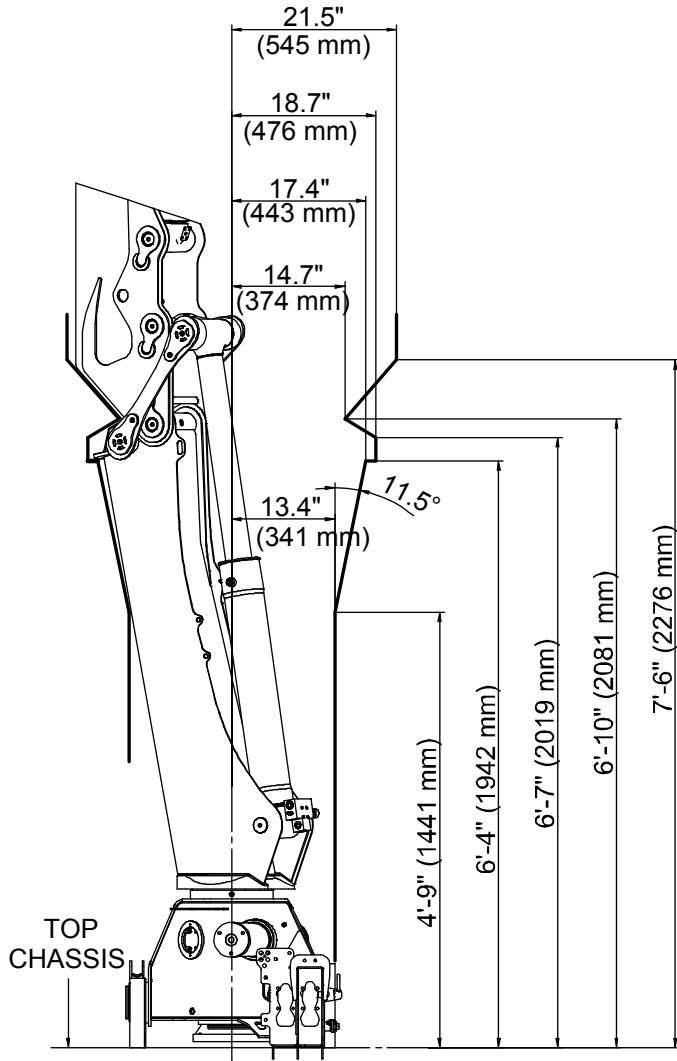


Swing Clearance Drawings

Single Link Swing Clearance



Double Link Swing Clearance



CHAPTER 2

Pressure Settings & Hydraulic Schematics

In This Chapter

| | |
|---|----|
| 10/72 Pressure Settings, Hydrocontrol Controls | 25 |
| 10/72 Hydraulic Schematic, Hydrocontrol Controls..... | 27 |
| 10/72 Pressure Settings, Danfoss Controls | 28 |
| 10/72 Hydraulic Schematic, Danfoss Controls | 30 |

10/72 Pressure Settings, Hydrocontrol Controls

| Working Pressure on Main-Relief Valve & Port-Relief Valves | | | |
|--|-----------|------|-----------------------------|
| Function | Direction | Port | 10/72 Pressure psi (bar) |
| Main-relief valve | | | 4785 (330) |
| Slewing system | Right | A | P |
| | Left | B | P |
| Boom cylinder | Down | A | 1450 (100) |
| | Up | B | 4930 (340) |
| Jib cylinder | Up | A | 4930 (340) |
| | Down | B | 2900 (200) |
| Extension cylinders | Extend | A | P |
| | Retract | B | P |
| Rotator | Right | A | 2900 (200) |
| | Left | B | 2900 (200) |
| Grab | Open | A | 2900 (200) |
| | Close | B | 2900 (200) |
| Separate stabilizer valve | | All | 2175 (150) |

| Working Pressure on Load-Holding Valves | | | |
|--|-----------|------|-------------------------------------|
| Function | Direction | Port | 10/72 Opening Pressure psi (bar) |
| Boom cylinder | | | 5075 (350) |
| Jib cylinder | Up | A | 5075 (350) |
| | Down | B | |
| Slewing system | | | 3045 (210) |
| Extension cylinders | Extend | A | 3045 (210) |
| | Retract | B | 6235 (430) |

| Pressure Setting for HDL Valve | |
|---------------------------------------|------------|
| HDL | 4640 (290) |

| Pressure Setting for Load Moment Limitation (LMB) | |
|--|------------|
| Load moment limitation (LMB) | 4205 (320) |

| Maximum Pump Performance | |
|---------------------------------|---------------------|
| Pump performance, 1-circuit | 10.5 gpm (40 l/min) |

10/72 Pressure Settings, Danfoss Controls

| Working Pressure on Main-Relief Valve & Port-Relief Valves | | | | |
|---|-----------|------|---------------------------------|--|
| Function | Direction | Port | Port-relief valves psi (bar) | LS-pressure adjustment psi (bar) |
| Main-relief valve | | | 4785 (330) | 4785 (330) |
| Slewing system | Right | A | P | 2975 (205) |
| | Left | B | P | 2975 (205) |
| Boom cylinder | Down | A | 1815 (125) | 1450 (100) |
| | Up | B | 5075 (350) | 5075 (350) |
| Jib cylinder | Up | A | 5075 (350) | 5075 (350) |
| | Down | B | 3625 (250) | 3335 (230) |
| Extension cylinders | Extend | A | P | - |
| | Retract | B | P | - |
| Rotator | Right | A | P | 725 - 4350 (50-300) |
| | Left | B | P | 725 - 4350 (50-300) |
| Grab | Open | A | P | 725 - 4350 (50-300) |
| | Close | B | P | 725 - 4350 (50-300) |
| Winch | Lift | A | P | 2320 (160) |
| | Lower | B | P | 2320 (160) |
| Separate stabilizer valve | | All | | 2175 (150) |

| Working Pressure on Load-Holding Valves | | | |
|--|-----------|------|--|
| Function | Direction | Port | 10/72 Opening Pressure psi (bar) |
| Slewing system | Right | | 3045 (210) |
| | Left | | 3045 (210) |
| Boom cylinder | Up | | 5075 (350) |
| | Down | | - |
| Jib cylinder | Up | | 5075 (350) |
| | Down | | 3625 (250) |
| Extension cylinders | Extend | | 3045 (210) |
| | Retract | | 6235 (430) |

| Pressure Setting for Load Moment Limitation (LMB) | |
|--|------------|
| Load moment limitation (LMB) | 4570 (315) |
| HDL | 4135 (285) |

| Maximum Pump Performance | |
|---------------------------------|---------------------|
| Pump performance | 18.5 gpm (70 l/min) |

10/72 Hydraulic Schematic, Danfoss Controls

