

PICK ACE

IHI

Telescopic Boom Mini Crane

*2.93 metric tons
maximum
lifting capacity*

Comply with worldwide standards:
ISO4305-1991
DIN 15019.2 Crane Ratings
BS1757 1986



- Zero tail swing within crawler width
- 360-degree slewing
- 9.50 meters maximum horizontal reach
- 10.0 meters maximum boom length
- 10.9 meters maximum lift above ground

IHI Construction Machinery Limited

Courtesy of Machine.Market

PICK ACE

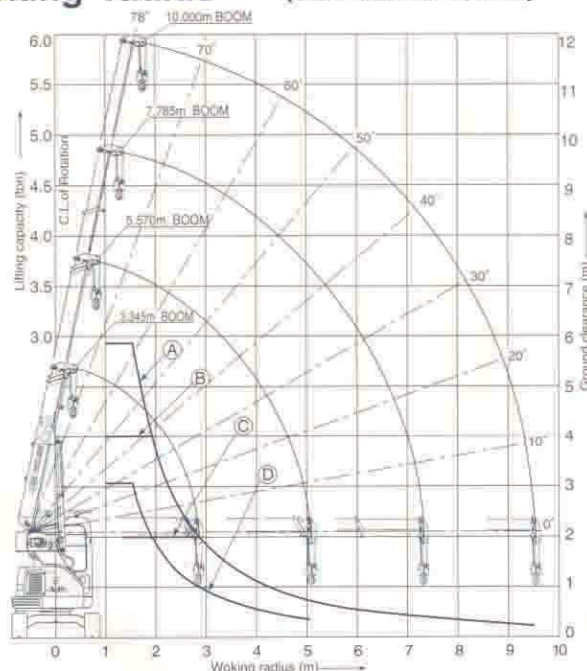
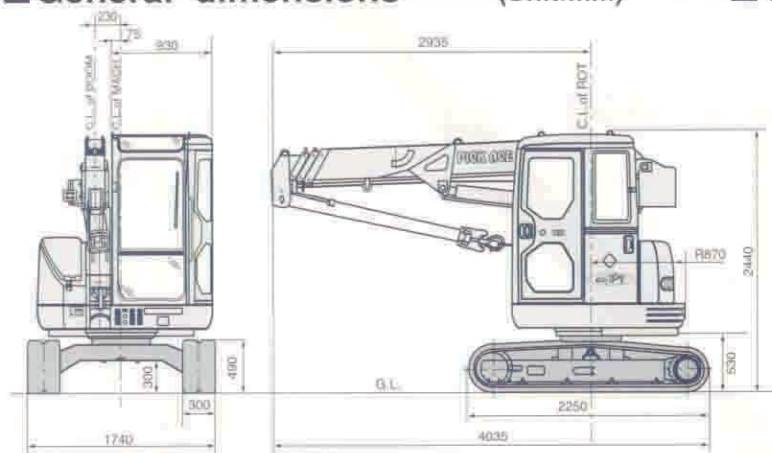
CCH30T

General dimensions

(Unit:mm)

Working radius

(3.34~10.0m Boom)



[Note]

Working radius means a horizontal distance from the center line of rotation to the hook center. Working radius shown actual radius which considered deformation by lifted load.

CCH30T overall rated load (3.345m~10.0m/4-stage boom)

Working radius (m)	In static lifting			In travel lifting
	(A) 3.345~5.570	(B) 5.570~7.785	(C) 7.785~10.000	(D) 3.345~5.570
1.55	2930	2000	1000	1530
1.70	2550	2000 × 1.92m	1000	1280
2.00	1860	1860	1000	930
2.30	1450	1450	1000	730
2.50	1250	1250	1000 × 2.85m	630
3.00	920	920	920	460
3.50	710	710	710	360
4.00	560	560	560	280
4.50	450	450	450	230
5.00	370	370	370	190
5.50	360 × 5.07m	310	310	180 × 5.07m
6.00		270	270	
6.50		240	240	
7.00		210	210	
8.00		200 × 7.28m	170	
9.00			130	
9.50			110	

(Unit : kg)

Notes

- All rated loads are in accordance with the requirements of Clause 9, stability of B.S.1757,1986 with wind forces to tables 5(a) and 6(a) of B.S.2573, Part1:1989. The machine must be operated on the firm level ground. Rated loads are the value at any point of 360° around the machine.
- The weight of hook block and other lifting devices must be considered to be a part of the load. 2.93 ton hook (4 parts of line): 30 kgs.
- The lifting load during traveling state is the load where it is statically lifted and then traveled on a firm, level ground. In this case the load should be held in a position close to the ground without rapid start, rapid stop, spin turn, and other similar operations.
- While a load is lifted and the machine is traveled, do not conduct crane operations such as load raising/lowering operations, boom raising/lowering operations, and boom extension/retraction operations.
- The load applied is limited depending on the number of ropes reeved as follows:
4 parts of line: Up to 2.93 tons. 3 parts of line: Up to 2.25 tons.
2 parts of line: Up to 1.50 tons. 1 part of line: Up to 0.75 ton.
- Wire rope specification
Main hoist: $\Phi 8$ mm Guaranteed breaking strength of 4.3 kN(4.39 tons)
 $7 \times 7 + 6 \times WS(26)$

Specifications

Performance

Boom length	3.345m~10.0m four-stage boom
Max. lifting load × working radius	2.93t × 1.55m
Max. lift above ground level of hook	10.9m
Load hoisting/lowering rope speed	72m/min (4th layer)
Boom hoist speed	10.0 sec/10° ~ 78°
Boom extension speed	14.0 sec/3.345m~10.0m
Swing speed	2.1min ⁻¹ (2.1rpm)
Traveling speed	High 3.8km/hr, Low 2.5km/hr

Weight

Total equipment mass	3900kg with 3.345m~10.0m four-stage boom
Average ground bearing pressure	Approx. 35kpa (0.36kgf/cm ²)

Engine

Make	Yanmar Diesel Co.,Ltd.
Model	3TNE84-IKA
Type	4cycle, water cooled, overhead valve, direct injection type
Rated output	19.7kW/2400min ⁻¹ (26.8PS/2400rpm)
Max. torque	98Nm/1500min ⁻¹ (10kgf · m/1500rpm)
Displacement	1496cc
Fuel tank capacity	30lit
Battery	12V-55AH

Hoist device (Main/Aux.)

Hydraulic motor	Axial piston type
Reduction gear	Spur gear two-stage reduction
Hoist drum	Grooved type
Brake	Wet type multi-disk automatic brake
Hoist rope	Rope length: $\Phi 8$ mm × 63m
Boom hoist device	Double acting direct-push type hydraulic cylinder

Swing device

Hydraulic motor	Fixed displacement internal gear type
Reduction gear	Spur gear (Internal gear) one-stage reduction
Swing bearing	Single ball bearing type
Brake	Wet type multi-disk brake (with brake valve)

Travel unit

Hydraulic motor	Variable displacement plunger
Reduction gear	Spur gear one-stage + cycloidal gear one-stage reduction
Shoe	Rubber crawler (300mm)

Driving pump

Axial piston pump 2	Gear pump 2
---------------------	-------------

Safety device

Swing brake/ Overhoisting prevention device/ Boom angle indicator/ Hook wire sling stopper/ Gate lock lever/ Hydraulic safety valve/ Counterbalance valve	
---	--

from actual objects.
ns.



REGISTERED FIRM
NO.0124-1509001

Printed in Japan
IK1210B9904T110