

1520-K

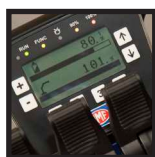


- power to lift



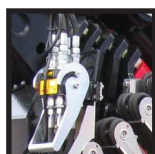


LOADING GROUP HC1/HD5/B3		1520-K1	1520-K2	1520-K3	1520-K4	1520-K5	1520-K6
Type		KX+					
TECHNICAL DATA							
Load moment	tm	14.2	13.8	13.4	12.9	12.6	12.2
Hydraulic reach	m	6.2	8.3	10.4	12.7	14.9	17.2
Slewing torque	kgm	1794					
Slewing angle	°	400					
Working pressure	bar	345					
Weight excl. stabilizers	kg	1360	1500	1640	1775	1895	1990
Weight of stabilizers, standard	kg	200					
Pump performance	l/min	70-100					
Oil tank capacity, separate tank	l	90					
Power consumption	kW	40-58					
GEOMETRY							
Height above mounting surface	mm	2250					
Width, folded	mm	2500					
Length of crane, no extra valves	mm	820					
Length with 2 extra valves in internal hose reel	mm	820					
Dual Power Plus link arm system		Basic					
Over-bending on crane	°	15					
Hook height 1 m from column	m	2.76	2.71	2.62	2.53	2.44	2.35
CONTROL MODE							
Radio remote control of crane		Basic					
Manual operation of stabilizer functions		Basic					
Remote control box with HMF InfoCentre		Option					
Remote control box, linear control levers (L) or joysticks (J)		L / J					
Stand-up controls with bracket for radio remote control box		Option					
Top seat on column with bracket for remote control box		Option					
CONTROLS							
RCL 5300 Safety System		Basic					
Proportional control valve type (-d) for radio remote control		Basic					
Dual control of stabilizer functions (crane)		Basic					
Electronic speed adaptation system HDL-d		Basic					
OPTIONS: HYDRAULIC EQUIPMENT							
Oil cooler		Option					
Fixed or variable flow pump		Option					
Hydraulically extensible stabilizer beam		Option					
Multi-coupling for extra valves in hose guides		Option					
1500 kg or 2500 kg hydraulic winch on the crane		Option					
2-part snatch block		Option					
Radio remote controlled stabilizer functions		Option					
Extra valves in hose guides		Option					
Extra valves in hose reels internally in the jib extensions		Option					
Extra valves in external hose reels		Option					
90 l oil tank mounted on the crane		Option					
OTHER EQUIPMENT		1520-K1	1520-K2	1520-K3	1520-K4	1520-K5	1520-K6
Number of manual extensions			3	3	3	2	1
Work light on crane		Option					
2 or 4 available functions for operating the separate traverse		Option					
Biodegradable oil		Option					
Manual swing-up stabilizer leg with gas spring		Option					



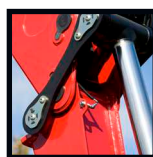
HMF InfoCenter

The HMF InfoCentre continuously informs the operator about the current load moment and condition of the crane.



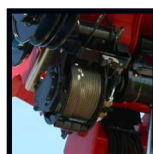
Multi-coupling

A multi-coupling makes it easy and simple to mount and dismount hydraulic accessories.



Double link arm system

The HMF dual Power Plus link arm system has an excellent lifting capacity at long reach and in high positions as well as it makes it possible to lift a heavy load close to the column.



Winch

A hydraulic winch provides efficiency for solving of lifting tasks in high positions - also via the Fly-Jib.



HMF radio remote control

The HMF radio remote control is part of a unique operation and safety system (TCC - Total Crane Control), which provides the operator with all advantages and possibilities for operating the crane functions and important safety functions on the HMF RCL Safety System. By means of the remote control box you can carry out many tasks besides operating the crane, independent of a fixed control position.



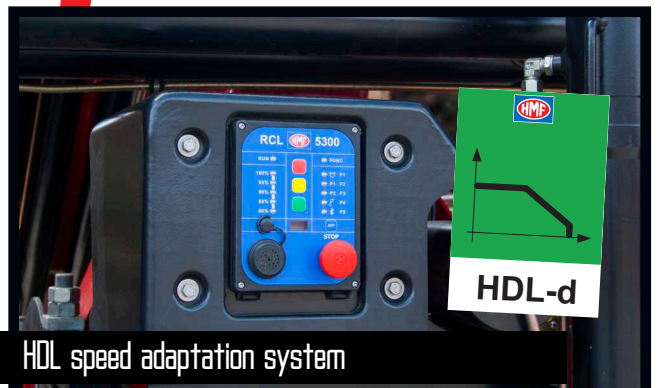
EVS - active securing of stability

HMF's patent pending stability safety system, EVS, is continuously taking into account the current load on the vehicle so that crane and truck are in perfect balance. As the system includes the load on the truck body as a part of the tare weight of the vehicle, it means that you actually obtain a considerably larger working area with a load on the truck body - thanks to EVS. This means that you obtain both an extraordinary high level of safety and larger capacity with EVS.



Immaculate finish - year after year

HMF does not compromise on the surface treatment. This is made possible thanks to HMF's Zetacoat pre-treatment followed by EQC powder coating, ensuring that corrosion never takes over. We guarantee that you obtain the best imaginable paint quality - a quality that never fades and that can withstand damage.



HDL speed adaptation system

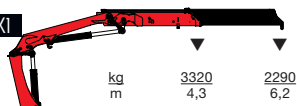
HDL-d is an electronic system which automatically adapts the crane speed to the working situation. You thus avoid big and sudden stress, which may damage the crane or influence the stability of the vehicle in an unfavourable way. The RCL 5300 is monitoring which movements that have to be adapted.



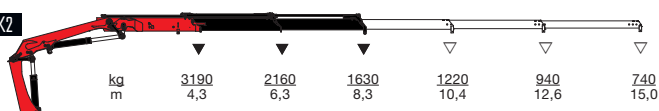
- power to lift



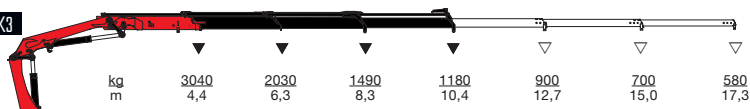
HMF 1520-K1



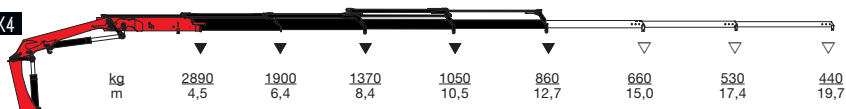
HMF 1520-K2



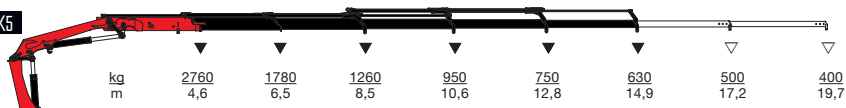
HMF 1520-K3



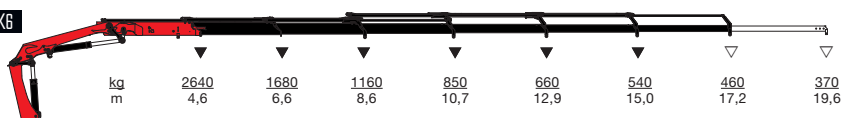
HMF 1520-K4



HMF 1520-K5



HMF 1520-K6



▼ Lifting capacity, no manual extensions
▽ Lifting capacity with manual extensions



- power to lift
HMF Group A/S

Oddervej 200 · DK-8270 Højbjerg
Tel.: +45 8627 0800 · Fax: +45 8627 0744 · info@hmf.dk

www.hmf.dk

Z008693-02

We reserve the right to introduce improvements and modifications

Courtesy of Crane.Market