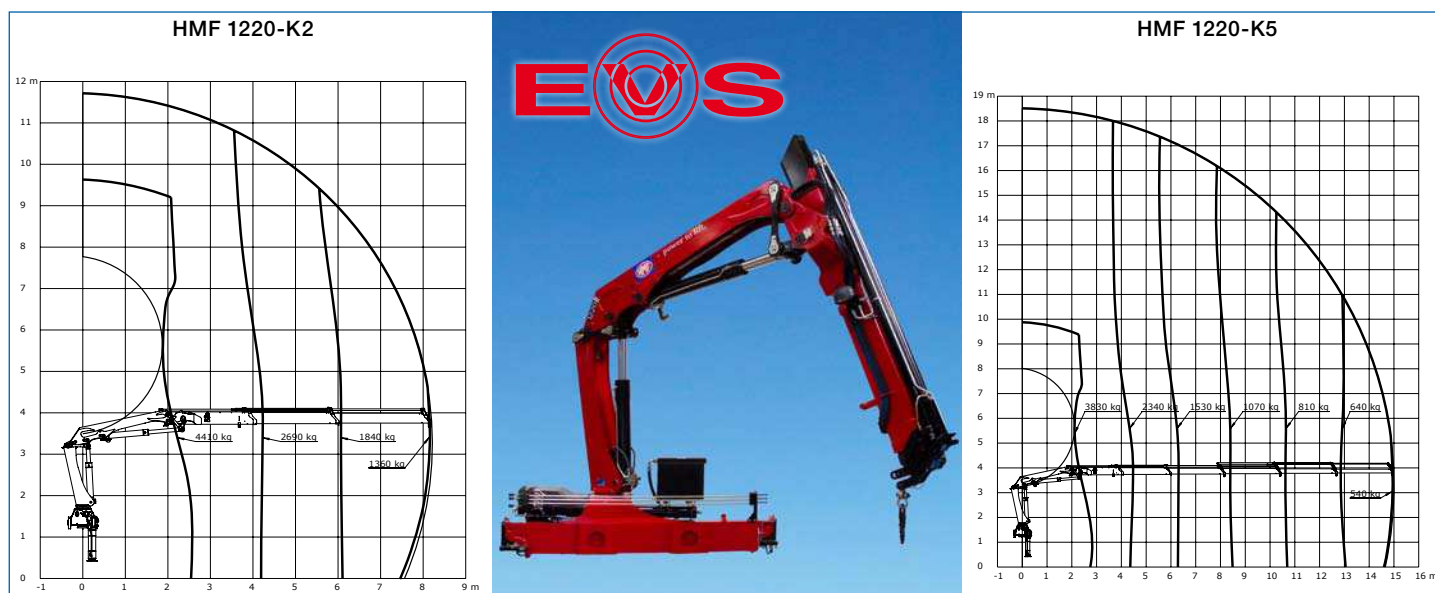


Loading group B3		1220-K1	1220-K2	1220-K3	1220-K4	1220-K5
Load moment	tm	11.7	11.4	11.0	10.7	10.5
Hydraulic reach	m	6.1	8.2	10.5	12.7	15.0
Height above mounting surface	mm	2135	2135	2135	2135	2135
Width	mm	2500	2500	2500	2500	2500
Length of crane, no extra valves	mm	747	747	747	747	747
Max. stabilizer spread, long	mm	5590	5590	5590	5590	5590



The HMF 1220-K with dual Power Plus link arm system, HDL-d speed adaptation system, RC-d proportional control valve with SC2 radio remote control for a very fast and precise handling. Fixed or variable flow pump.

Can be equipped with HMF's load-dependent EVS system monitoring and ensuring stability.

This crane has up to 5 hydraulic extensions, and can be equipped with hydraulically extensible stabilizer beams and swing-up stabilizer legs (option).

It has been manufactured in high-tensile steel and with its particularly low tare weight and the longest reach within its range of as much as 15.0 in the K5 version, there is a lot of power for lifting heavy loads at a long reach.

A high performance hydraulic system, an optimized crane geometry and the RCL Safety System guarantee a highly efficient, very fast and safe HMF loader crane.

Superior strength and low tare weight, operational safety and a nice and wear-resistant design make this crane an extremely versatile and powerful working tool.

## Safety:



## Operation/equipment:

