



HKTC



CONFIDENCE FOR **THE BEST**
THOUGHTFULNESS TO **SAFETY**
MANEUVERABILITY TOWARD **EFFECTIVENESS**



 **HKTC**

Courtesy of Crane.Market

**HARMONY OF SAFETY AND CONVENIENCE
EXCELLENT CHOICE THROUGH
THE VALUE BEYOND EXPECTATION**

**BEST AERIAL WORK PLATFORM MADE BY THOROUGH FIELD TEST,
REFLECTING CUSTOMER'S PRECIOUS OPINION**

**UNPRECEDENTED PREMIUM SPECIFICATION AND OUTSTANDING PERFORMANCE
PROVIDE FULL ENERGY TO AERIAL WORKPLACE**





Slewing Type Main Outrigger

Slewing type main outrigger realizes simple installation of outrigger without interference, even the vehicle for main outrigger not to be installed easily.



Hydraulic Winch (Option)

Platform usefulness increases by hydraulic winch for heavy weight loading.
Over-winding prevention function is applied in order for safety aerial work.



Base Protect Cover

To prevent base damage of foreign substance or shock, protect cover is applied and exposure of hydraulic hose minimized.



Wireless Remote Controller (German Brand)

Reliability of aerial work rises by wireless remote controller operation.



Electrical Bucket Slewing

Safe aerial work is secured by electrical bucket slewing operation.



H Type Rear Outrigger

H type rear outrigger increases safe operation of platform and same type of front & rear outrigger maintain safe vehicle horizontality.



Safe Boom System

To minimize the shaking on aerial work, sliding pad is applied to every section of hexagonal boom and safety of wire strengthen by wire levelling fixing device.

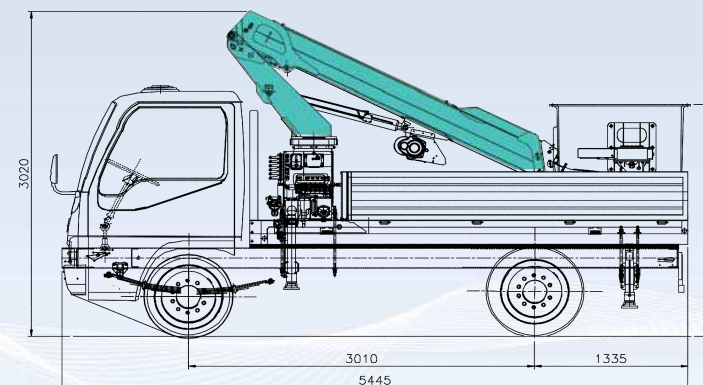
TECHNICAL SPECIFICATIONS

EXTERIOR

| Description | | HAP-1000M | HAP-1200M | HAP-1500M |
|-------------------------------|------------------------------------|--|------------------|------------------|
| Basket | Rated Load | 200kg.f | 200kg.f | 200kg.f |
| | Size | F.R.P (Fiberglass Reinforced Plastic) | | |
| | Material | 630 mm x 1,105 mm x 1,000 mm | | |
| Working Height | Max. Working Height | 10.8 m | 12.0 m | 15.1 m |
| | Bucket Height (to Floor of Bucket) | 8.8 m | 10.0 m | 13.1 m |
| Rated Oil Flow | | 15 Liter / min | | 20 Liter / min |
| Hydraulic Fluid Tank Capacity | | 35 Liter | | |
| Boom | Type | Hexagonal | | |
| Slewing | Type | Hydraulic Motor Driven Worm Gear Reduction | | |
| | Angle / Speed | 370° Uncontinuous / 1 rpm | | |
| Winch (Optional) | Type | Hydraulic Motor Driven Spur Gear Reduction | | |
| | Capacity | 1,000 kg.f | | |
| Safety Devices | | Safety Valve (Relief Valve) / Over-center Valve / Double Pilot Check Valve / Safety Hook / Emergency Stop Device / Manual Emergency Pump / Upper & Lower Interlock / Buzzor etc. | | |
| Available Vehicle | Payload basis | 1 ton and over | 1.2 ton and over | 2.5 ton and over |

※ The specification can be changed for the product improvement without prior notice at any time.

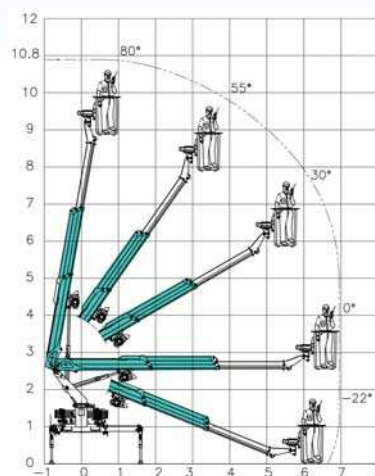
※ The above mentioned models can be mounted on technically-suitable truck, regardless of truck maker.



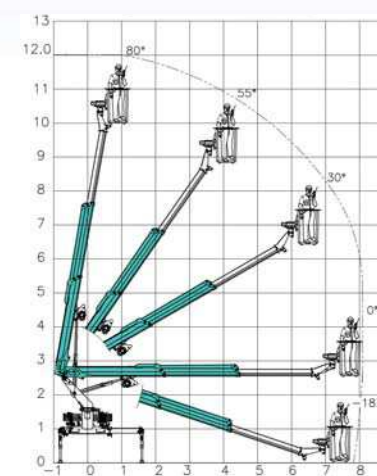
Exterior can be changed according to procured truck chassis.

WORKING RADIUS

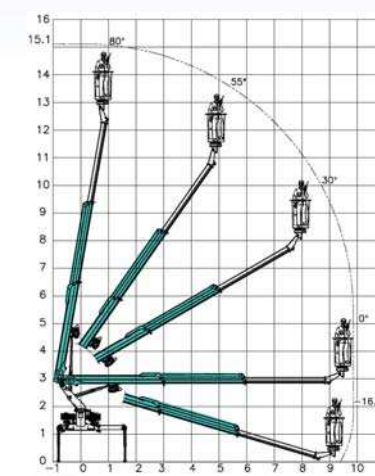
HAP-1000M



HAP-1200M



HAP-1500M



HanKook Tower Crane Co., Ltd.

Head Office : 1191, Chopyeong-ro, Chopyeong-myeon, Jincheon-gun, Chungbuk, Korea
 Tel : +82-43-838-3311 Fax : +82-43-838-3361
 E-mail : snha@hkct.co.kr www.hkct.co.kr



HKTC 1605-05 Vol. 01 May. 2016©2016 HKTC printed in Korea