

Hiab XS 390L CLX

Capacity 35 tm



Product brochure



Faster loadcycles faster deliveries



Hiab XS 390L CLX Capacity 35 tm

Fast, efficient building material deliveries

Over 3200 kg can be quickly loaded or unloaded from as far out as 10.6 metres. The fast cycle speed derives from a 460° slewing radius and a long first boom. And load can be stacked up high underneath the boom, even close to the column, which allows more payload and reduces trips between pick-up and delivery. The seven-metre stabiliser span, with a ball-and-socket solution on the support leg plates, ensures stability.

Load-holding valve

The load-holding valve holds the load even in the event of hose leakage.

Oil cooler

The oil cooler helps preserve oil quality and makes the oil last longer. An oil cooler is especially important to have in cranes for intense work applications involving numerous load cycles per day – especially when fitted with a fixed pump and/or in warm climates.

Oil bath

Keeping the slewing mechanism in an oil bath provides smooth and precise slewing. Reduced wear on the mechanism keeps repair and service costs to a minimum and also guarantees a longer crane life.

High-pressure filter

The protective high-pressure filter reduces the risk of damage to the valve, keeping maintenance costs down.

High-torque slewing

A heavy-duty, high-torque slewing mechanism ensures safe and efficient operation even on inclines or slopes.





L-boom

The long first boom gives faster loading and unloading of goods. It also enables higher lifting close to the column.

Internally mounted extension cylinders

Having extensions internally mounted, so called telescopic, keeps them well protected from being struck by loads or other types of damage.

Hexagonal boom profile

The hexagonal profile ensures the boom is always in perfect balance, thanks to its shape and large support surface. The profile also minimises boom deflection, which reduces maintenance costs and increases efficiency.

Protection for second boom cylinder rod

The second boom cylinder sits inside the first boom with a protection for the rod. This provides maximum protection from elements during transport as well as from the metal hooks used on the load's tie-down straps.

JIC couplings

JIC couplings are standard on most Hiab cranes. They ensure easy and secure coupling, but are still very simple to disconnect for service.

Attention to details built-in

The built-in features have been given the center of attention. Vital parts, such as load holding valves and second boom cylinder, are well protected to reduce maintenance costs. Also, all the hose tracks are robust and well protected to prevent damage from excessive road vibration in transport and contact with tree branches, tie down straps and the like.

C-link

The C-link system comprises an first boom link, which significantly increases the lifting capacity of the crane in high boom positions, especially when working close to the column. In practice, this could mean the difference between loading and not loading a heavy weight onto a truck.

HIAB XS 390L – standard features

Hiab XS 390L is designed for “drop’n’go” deliveries that require fast load cycle speed and great capacity.

Crane movements are fast and precise thanks to the Hiab Valve 91 control valve. There are two joysticks and two pedals for maneuvering, and excellent visibility throughout the entire load cycle.

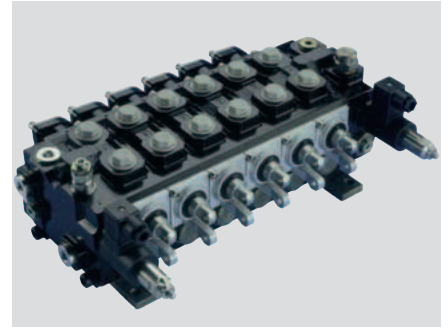
An oil cooler, oil bath and high pressure filter are fitted as standard to prolong hydraulic component service life, and to achieve smooth, precise slewing we have immersed the slewing mechanism in oil.

CLX control system

The CLX control system gives you an excellent and versatile crane, providing all the functionality you need to perform a wide range of general load handling tasks. The hydraulic system of a CLX crane features load holding valves with an integrated hose failure function, as well as port relief valves to prevent the crane from overloading.

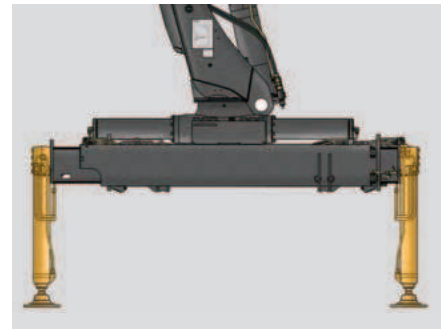
Valve 91

Hiab Valve 91 is a load-sensing and pressure-compensated valve with spools customised specifically for each hydraulic function. Hiab Valve 91 is a suitable choice when very high requirements are placed on precision and speed. The valve is very well suited for remote control and is our highest ranked valve for manual control of slightly larger cranes. Both environment and economy benefit when the valve is combined with a variable pump – a solution reducing both emission of carbon dioxide and costs for fuel. The valve can handle as high oil flows as 120 litres per minute. The oilflow recommended is specified in the crane’s technical documentation.



Valve 91

With the Valve 91 the crane becomes faster and more precise. Centimetric precision is achieved at long outreach. Combining Valve 91 with a variable pump saves fuel and reduces emissions of carbon dioxide.



Stabiliser legs

The crane has excellent stability: Its seven metre stabiliser span together with a ball and socket solution on the leg plates increase safety by keeping the crane in perfect balance over the entire working area.

High seat

The crane is manually controlled from an adjustable high seat. The seat is easily accessible by ladder from the base. The two joysticks and two pedals allow several functions to be operated simultaneously.









Variable flow pump – an optional green feature

The hydraulic system of the HIAB XS 390L can be fitted with a variable flow pump: a good way to save costs for fuel, reduce emissions and increase engine life.

Variable oil pump

A variable pump provides greater control in all movements. You can work faster. The oil-cooling fans do not have to run constantly, leading to lower noise levels as well as environmental advantages.

Design innovation – driven by you

Hiab is part of Cargotec, renowned throughout the world for innovation and engineering excellence. The quality and reliability of our cranes are without equal in the truck loader market. But there is another crucial factor in our global success. We have a philosophy of listening, and responding, to the needs of those who matter most – the people who own and operate our cranes. The design and development of every crane we manufacture are customer-driven. This will become really clear when using your Hiab loader crane.

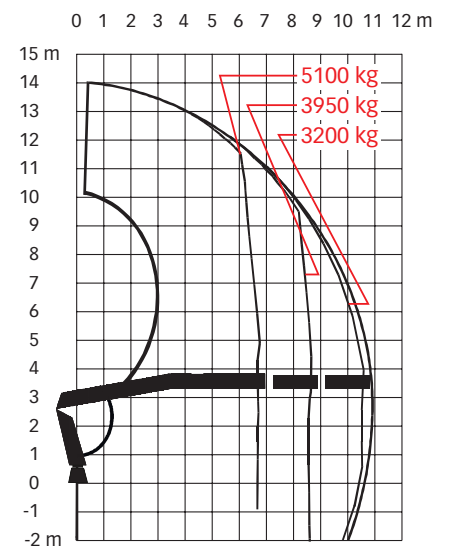
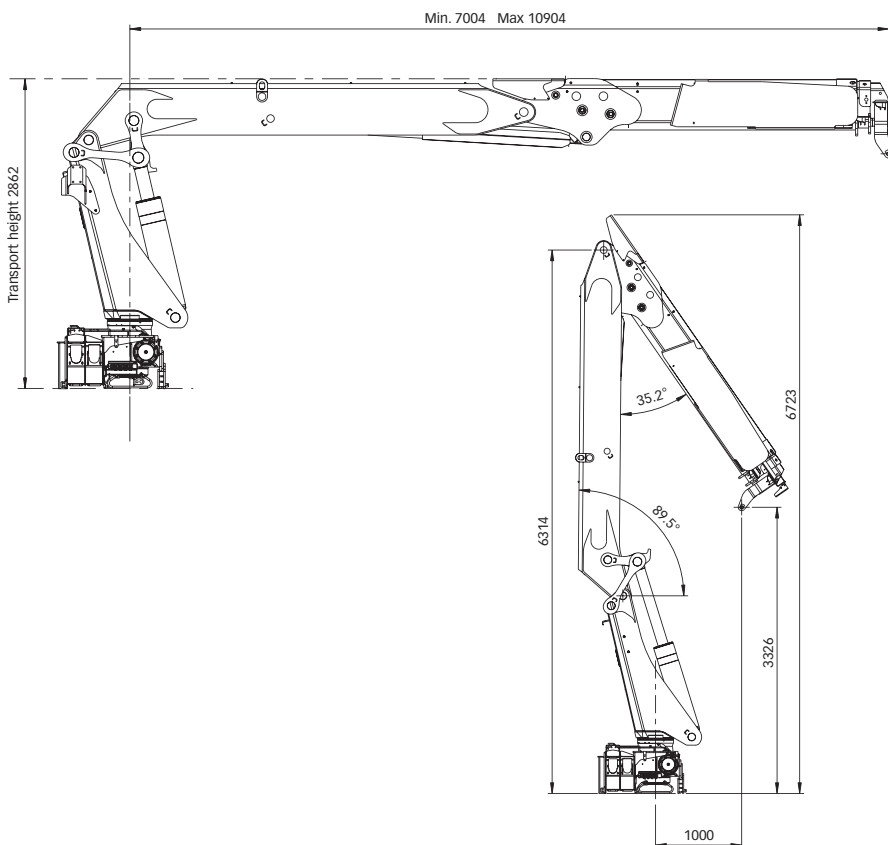


Technical data

L-2 CLX

Max. lifting capacity (kNm)	34.3
Max. lifting height above installation level (m)	13.6
Outreach, hydraulic extensions (m)	10.9
Outreach / lifting capacity (m/kg)	6.6 / 5200 8.6 / 3950 10.6 / 3200
Rec. oil flow, V91 and fixed pump (l/min)	80 - 90
Max. working pressure (MPa)	30.0
Tank Capacity (l)	150
Slewing angle (°)	460
Max. slope viable at full capacity (°)	5.3
Slewing torque, gross (kNm)	50.8
Height in folded horizontal position (mm)	2862
Installation space needed (mm)	1029
Weight, "standard" crane without stabilisers (kg)	3935
Weight, stabiliser equipment (kg)	634

Hiab XS 390L-2 CLX



Disclaimer. Hiab cranes have been built to meet the highest standards of safety and service life and have been thoroughly tested. Strength calculations for this model have been carried out in accordance with EN13001 in fatigue class S2. Cargotec's certified Quality Assurance System complies with ISO 9001. Some of the items in our literature may be extra equipment. Certain applications may require an official permit. We reserve the right to change technical specifications without prior notice. Hiab cranes produced for EU-countries are CE-marked and comply with the European Standard EN 12999.

Cargotec improves the efficiency of cargo flows on land and at sea – wherever cargo is on the move. Cargotec's daughter brands, Hiab, Kalmar and MacGregor are recognised leaders in cargo and load handling solutions around the world. Cargotec's global network is positioned close to customers and offers extensive services that ensure the continuous, reliable and sustainable performance of equipment. www.cargotec.com

