

# Hiab XS 166 CLX

## Capacity 17 tm



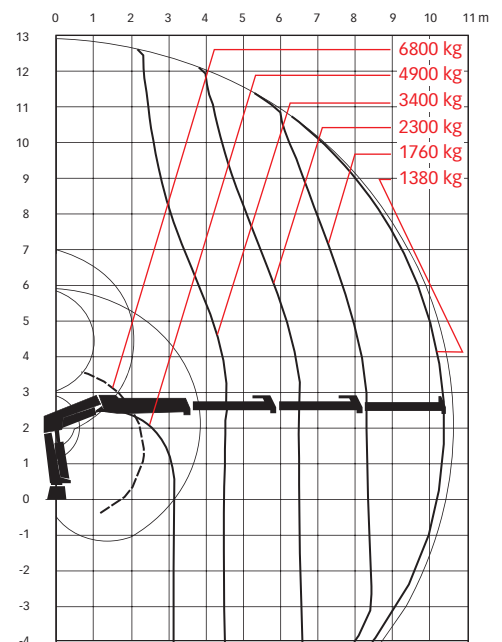
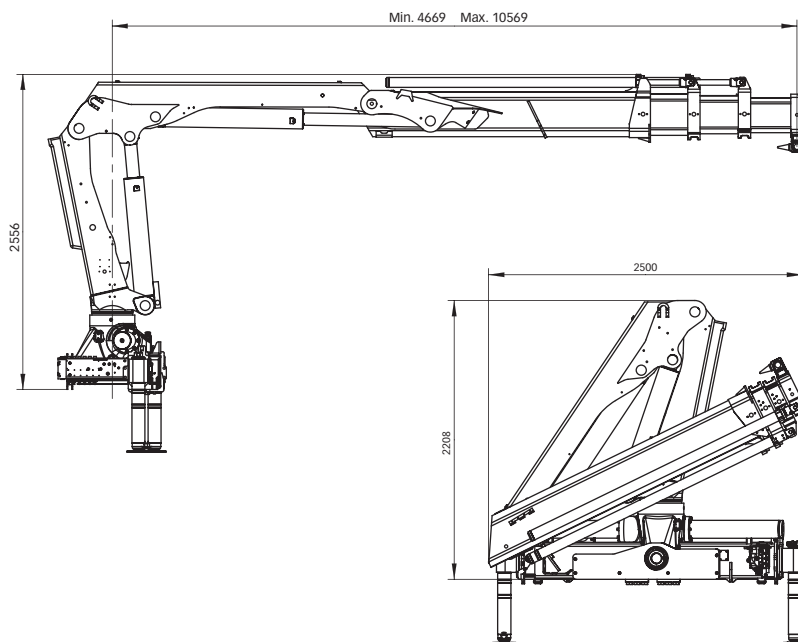
Basic data

# Hiab XS 166 CLX Basic data

## Technical data

	B-1 CLX	B-2 CLX	B-3 CLX	E-4 CLX	E-5 CLX
Max. lifting capacity (kNm)	164	156	150	143	141
Outreach, hydraulic extensions (m)	6.3	8.4	10.6	12.8	15.1
Outreach, manual extensions (m)	12.8	12.8	12.8	17.4	17.4
Outreach / lifting capacity (m / kg)	3.0 / 5500	3.0 / 5300	3.1 / 4900	2.6 / 5600	2.6 / 5400
	4.4 / 3800	4.4 / 3500	4.5 / 3400	4.6 / 3200	4.8 / 3000
	6.1 / 2700	6.2 / 2500	6.3 / 2300	6.4 / 2200	6.6 / 2000
	-	8.1 / 1900	8.2 / 1760	8.4 / 1600	8.5 / 1500
	-	-	10.3 / 1380	10.4 / 1260	10.6 / 1140
	-	-	-	12.6 / 1020	12.8 / 920
	-	-	-	-	15.0 / 760
Slewing angle (°)	190 - 406	190 - 406	190 - 406	190 - 406	190 - 406
Height in folded position (mm)	2208	2208	2208	2232	2274
Width in folded position (mm)	2500	2500	2500	2500	2500
Installation space needed (mm)	1050	1050	1047	1034	1034
Weight, "standard" crane without stabilizers (kg)	1600	1730	1850	2110	2220
Weight, stabilizer equipment (kg)	255 - 387	255 - 387	255 - 387	255 - 387	255 - 387

## Hiab XS 166 B-3 CLX



**Disclaimer.** Hiab cranes have been built to meet the highest standards of safety and service life and have been thoroughly tested. Strength calculations for this model have been carried out in accordance with EN13001 in fatigue class S2. Cargotec's certified Quality Assurance System complies with ISO 9001. Some of the items in our literature may be extra equipment. Certain applications may require an official permit. We reserve the right to change technical specifications without prior notice. Hiab cranes produced for EU-countries are CE-marked and comply with the European Standard EN 12999.

**Cargotec** improves the efficiency of cargo flows on land and at sea – wherever cargo is on the move. Cargotec's daughter brands, Hiab, Kalmar and MacGregor are recognised leaders in cargo and load handling solutions around the world. Cargotec's global network is positioned close to customers and offers extensive services that ensure the continuous, reliable and sustainable performance of equipment. [www.cargotec.com](http://www.cargotec.com)