



# MARINE CRANES

ON-DECK, DOCKSIDE AND SERVICE CRANE SOLUTIONS







## ACROSS THE SEAS OF THE GLOBE

HIAB marine cranes are among one of the most robust, reliable and proven cranes in the marketplace. They are appreciated in the business, as they can be configured to suit the most demanding customer needs and are specialized to work for diverse types of marine and sea applications.



HIGH QUALITY MARINE  
MATERIALS



CERTIFICATIONS



GLOBAL SERVICE  
NETWORK

Hiab marine cranes are especially developed for the marine's tough and demanding working environments, with the use of high quality materials and designs.

Upon customer request, a wide selection of marine certifications are available. The process is done in close cooperation with the customer's input and the Hiab salesperson's guidance.

Hiab has one of the most extensive service networks, capable of assisting customers worldwide, competent professionals and with maintenance programs and original spare parts delivered in prompt time.

## EVERYDAY SUPPORTING YOUR SEA OPERATIONS

Our long history in serving customers, whose needs for flexibility and versatility are key for their marine business, matched to a wide range of products to choose among, is the ideal solution in terms of service, quality and performance for this demanding sector.

HIAB's marine crane offer, with up to 50 tm models is key for those customers using few vessel units all the way up to those handling bigger fleets. The possibility to fit several cranes on a single vessel allows to manage flexible operations and increase productivity.

There is always a crane model for the several sea and marine uses and boat applications:

- **Recovery, material loading and unloading and for fishing boat purposes.**
- **Coast guard vessels, tugs, supply ships, oil drilling platforms, ice breakers, and dredgers, barges, research boats, cruise ships, navy ships, fishing boats and dockyards.**

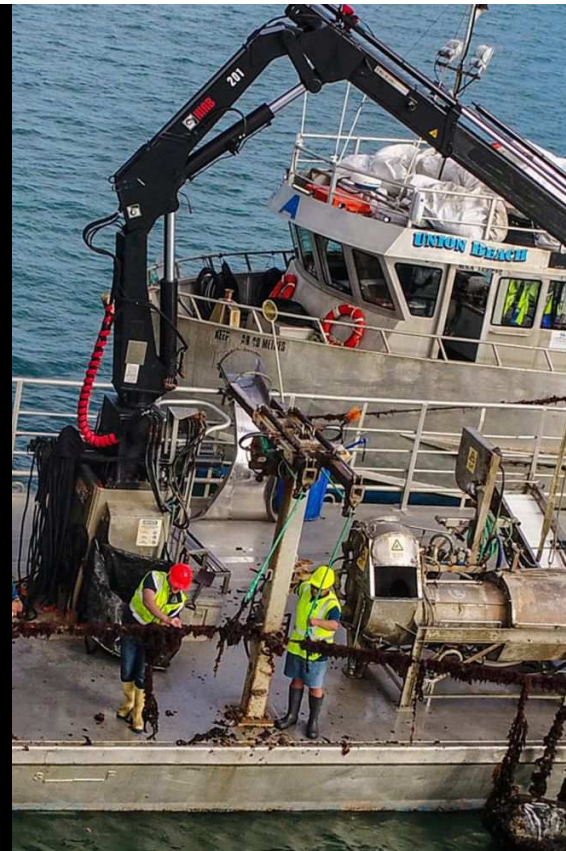


# MARINE CRANES

## RANGE

HIAB offers a range of cranes that have been specifically designed with full marine properties, and a range of cranes that are adapted to work in the marine environment for a wide spectrum of uses.

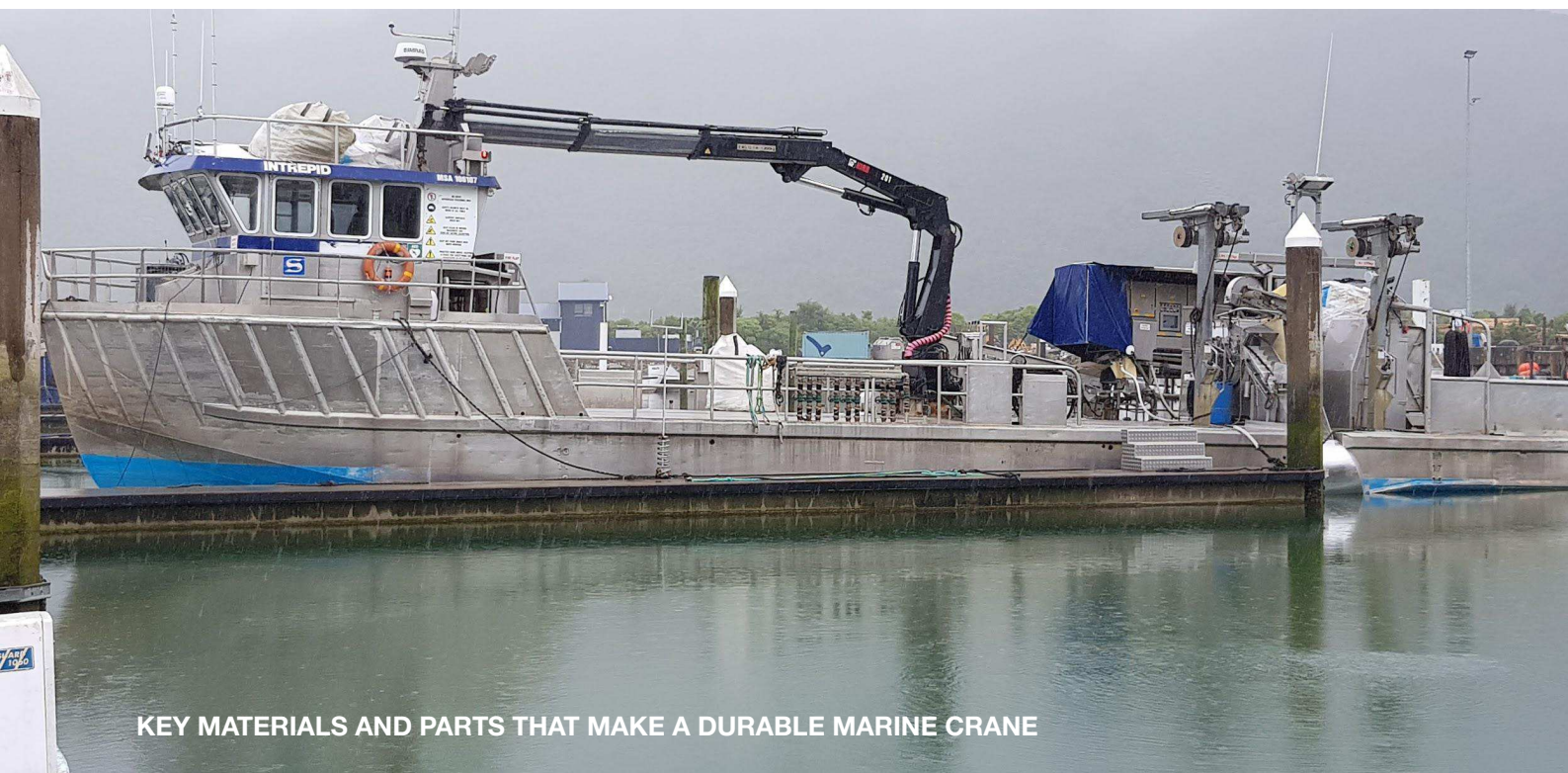
The HIAB sea crane is outstanding in comparison with outdated stiff booms and derricks. The knuckle boom principle creates exceptional freedom of movement, while maintaining a maximum lifting capacity, precise load handling, extra capacity at reduced reach and an optional total overload protection. To top it off, the crane folds efficiently into a compact storage space.



	H051-3	H061-3	H081-3	H111-3	H121-3	H201-5	H251-5	H301-5	H331L-4	H401L-4	H402-6	H501-6
Crane capacity(kNm)	45	50,8	72,6	100,9	127	160	227	270	311,5	362	347	436
Max, outreach(m)	9,09	9,6	9,6	9,9	12,0	14,1	13,6	13,7	17,0	16,1	17,4	17,0
Lifting capacity(m/kg)	4.1/1120 5.7/760 7.3/570 9.0/450	3.8/1330 5.4/900 7.3/650 9.2/500	4.3/1720 6.0/1180 7.8/870 9.6/700	4.4/2340 6.1/1600 7.9/1200 9.7/960	5.4/2400 7.6/1700 9.8/1200 12.0/1000	5.1/3200 6.8/2220 8.6/1640 10.4/1280 12.3/1040 14.1/900	5.2/4550 6.8/3250 8.5/2500 10.2/2040 11.9/1720 13.5/1500	5.3/5200 6.9/3800 8.5/3000 10.2/2460 11.9/2080 13.6/1800	8.5/3750 10.6/2820 12.7/2260 14.9/1860 17.0/1620	8.6/4300 10.6/2820 12.7/2260 14.9/1860 17.0/1620	5.2/6800 7.2/4600 9.2/3400 11.3/2600 13.3/2120 15.4/1780 17.4/1560	5.3/8400 7.0/6060 8.9/4400 10.9/3400 13.0/2700 15.0/2300 17.0/2000
Weight(kg)	710	1040	1280	1500	2350	2930	3400	3600	4600	5200	4810	5400
Lifting speed(sec)	13	12	15	18	26	33	51	51	40	50	45	45
Rated working pressure(bar)	260	250	250	260	250	260	240	250	250	250	260	280
Rated oil flow(ℓ/min)	25	35	35	35	40	40	40	40	60	60	60	60
Slewing angle(°)	410°	400°	400°	400°	400°	400°	400°	360° Continuous slewing				
Max heel+trim angle(°)	5°	7°	7°	7°	7°	7°	7°	7°	7°	7°	7°	7°
Slewing torque(kNm)	6,2	11,1	14,2	23,7	31,6	45,5	45,5	48,1	56,0	62,1	62,6	66,5
Slewing speed(°/sec)	7,2	7,2	7,2	7,2	7,2	7,2	7,2	7,2	7,2	7,2	7,2	7,2
Net required power(kw)	10,6	14,3	14,3	14,9	16	16,3	15,7	16,3	24,5	24,5	25,5	27,5



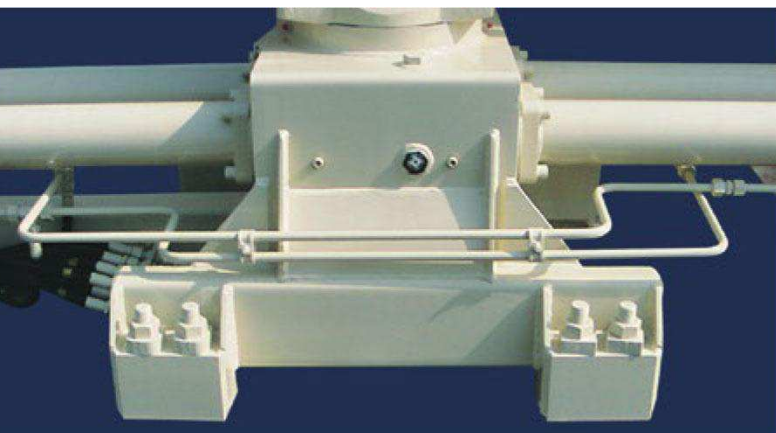
# MARINE CRANES



## KEY MATERIALS AND PARTS THAT MAKE A DURABLE MARINE CRANE

The cranes are designed, made and certified to resist under typical hard working conditions in the marine environment, like wear and tear, saline fog or for extreme temperatures. Furthermore, they are ideal to be installed onboard ships and vessels to handle loading different materials. The range of marine cranes can fulfill the EU standards EN13001 and EN 12999 upon request.

- SA 2.5 shot blast before primer forms the base for highest quality painting finish.
- Stainless steel pipes, hose and pipe fittings used to prevent corrosion in crucial parts.
- Stainless steel bolts used except in high-tensile parts.
- Hot dip galvanizing in extension booms and outer boom beams made to withstand harsh marine environments.
- Double chrome treatment and special seals on hydraulic cylinders ensure trouble-free operation in the most demanding conditions.
- Marine painting (primer, middle and final paint) of 210 micron.
- Oil bath type slewing system ensures easy maintenance and delivers long-life slewing.
- Strength calculation is carried out in accordance with EN 13001.



A heavy duty slewing system gives the capacity to operate the crane at max 7 degrees of heel without restriction of lifting capacity.



The link system of the outer boom gives additional power.



# CERTIFICATIONS



## BUILT TO PERFORM

Hiab is the world's leading provider of on-road load handling equipment, intelligent services, smart and connected solutions. Hiab's class-leading load handling equipment includes HIAB, EFFER and ARGOS loader cranes, LOGLIFT and JONSERED forestry and recycling cranes, MOFFETT and PRINCETON truck mounted forklifts, MULTILIFT skiploaders and hooklifts, and tail lifts under the ZEPRO, DEL, and WALTICO brands. As the industry pioneer and with a proud 75 year history, Hiab is committed to be the preferred partner and solution provider to its customers and shape the future of intelligent load handling. [www.hiab.com](http://www.hiab.com) Hiab is part of Cargotec Corporation. [www.cargotec.com](http://www.cargotec.com)

