

TM1500

Carrier-Mounted Hydraulic Crane



Carrier specifications

Frame	High strength alloy steel all welded box-type construction with integral outrigger housings and front/rear lifting, towing and tie down lugs.
Outrigger System	Hydraulic double stage, double box telescopic beam and jack outriggers with integral holding valves. All steel fabricated quick release type outrigger floats. 30 1/2 in. (775mm) diameter. Maximum outrigger pad load 282,825 lbs. (92000 kg). Standard fifth front stabilizer for 360° duties.
Outrigger Controls	Located in the superstructure cab and on both sides of the carrier frame. Push button controls requiring two-handed operation. Crane level indicator (sight-bubble) adjacent to each set of controls.
Engine	Cummins NTC 450C, six-cylinder turbo-charged after-cooled diesel. 450 bhp (335 kw) (gross) @ 2,100 RPM. Maximum net torque 1500 ft. lbs. (194 kg/m) @ 1,400 RPM.
Fuel Tank Capacity	(1) 100 gallons (378.5L)
Electrical System	Two 12 volt - maintenance free batteries, 12 volt starting.
Drive	12 x 6
Steering	Front axle steering, cam and lever type with hydraulic assist.
Transmission	Fuller Roadranger, 9 speeds forward, 2 reverse.
Axles	Front: (3) Rockwell tubular steering FL951, 100 in. (2540mm) track. Rear: (3) Rockwell EPRC 1735 planetary drive, 85 in. (2159mm) track.
Suspension	Front axles (3) spring mounted tridem. Rear axles (3) solid mounted tridem with equalizing beams.
Tires	Michelin 14.00X20-22PR(G20 X ZA4) radial ply tires front and back.
Brakes	Full air on all wheels. Air dryer provided to preclude moisture accumulation. Spring set emergency brake on all rear axles with emergency release.
Lights	Full lighting including head, tail, braking, reversing, directional and hazard warning lights.
Cab	Two man design, all-steel fabricated with acoustical lining and tinted safety glass throughout. Deluxe fabric covered fully adjustable seat. Complete driving controls and engine instrumentation including tachometer, speedometer, voltmeter, water temp. oil pressure, fuel level, air pressure gauge with A/V warning. Other standard items include hot water heater/defroster, electric windshield washer and wiper, fire extinguisher, seat belt, door and window locks.
Maximum Speed	42.1 MPH (67.3 kph).

	BASIC STANDARD MACHINE
Gross Vehicle Weight & Axle Loads	Front: 57,939 lbs. (26281 kg) Rear: 135,646 lbs. (61529 kg) G.V.W. 193,585 lbs. (87810 kg)
Miscellaneous Standard Equipment	Dual rear view mirrors, hookblock stowage trough, electronic back-up alarm, light package. Jacobs engine brake and tire inflation kit.
Optional Equipment	Immersion engine block heater, engine low oil pressure/high water temperature audio visual warning.

**Denotes optional equipment*

Superstructure specifications

Boom	46 ft. to 173 ft. (14m -53m) five section Trapezoidal boom, including remote-controlled aerial pinned section. Telescope sections are supported on replaceable graphite impregnated low friction wear pads. Maximum Tip Height: 182 ft. (55m).
Swingaway Extension	33 ft. (10.1m) lattice swingaway boom extension stows alongside base boom section when not in use. Offsettable at 2°, 15° or 30°. Maximum Tip Height: 215 ft. (66m).
*Optional Telescopic Swingaway	33 ft. to 58 ft. (10m-18m) telescopic lattice swingaway extension with offset links, offsettable at 2°, 15° or 30°. Stows alongside base boom when not in use. Maximum Tip Height: 240 ft. (73m).
*Optional Jib Extension	60 ft. (18m) or 88 ft. (27m) fixed offset jib. Also available are 60 ft. and 88 ft. power luffing jibs. Maximum Tip Height: 270 ft. (82m).
Boom Nose	Eight nylatron sheaves mounted on heavy duty tapered roller bearings with removable pin-type rope guards. Standard removable auxiliary boom nose with removable pin-type rope guard.
Boom Elevation	Dual double acting hydraulic cylinders with integral holding valve provides elevation from -3° to 80°.
Load Moment & Anti-Two Block System	Standard load moment and anti-two block system with audio-visual warning and control lever lockout. These systems provide electronic display of boom angle, length, radius, tip height, relative load moment, maximum permissible load, load indication and warning of impending two-block condition.
Cab	Full vision, all-steel fabricated with acoustical lining and tinted safety glass throughout. Dash panel incorporates gauges for all engine functions. Other standard features include: hinged skylight, sliding left side door and sliding right side window, electric windshield washer and wiper, circulating air fan, heater and defroster, swing horn, fire extinguisher, and seat belt. *Optional items: electric skylight wiper and air conditioning.
Swing	Roller bearing swing circle with 360° continuous rotation. Grove planetary "glide-swing" with foot actuated disc brake, spring applied hydraulically released park brake and 360° position positive turntable lock. Combination controls provided for hand or foot operation. Swing speed 1.9 RPM.
Counterweight	Turntable mounted, power installed and removed, hydraulically extended to working position and retracted to stowed or travel position. 15,700 lbs. (7122 kg) with auxiliary hoist; 17,400 lbs. (7892 kg) without auxiliary hoist.
Engine	Cummins 6CTA8.3 six cylinder turbo-charged after-cooled diesel, 250 bhp (186 kw) (gross) @ 2500 RPM. Maximum torque: 650 ft. lbs. (90 kg/m) @ 1800 RPM.

HYDRAULIC SYSTEM

Pumps	Six main gear pumps powered by superstructure engine. Manual pump disconnect. Combined capacity 349 GPM (1321 LPM).
Valves	Precision four way double acting control valves, six individual valve banks permit simultaneous control of multiple crane functions.
Filter	Return line type, full flow with by-pass protection and filter by-pass indicator, replaceable cartridge, 25 micron filtration rating.
Reservoir	420 gallons (1590 liters) with spin-on breather filter, external sight gauge, clean out access, strap mounted to frame.
Oil Cooler	Full flow, fin and tube, oil to air.

HOIST SPECIFICATIONS

Series parallel circuitry and two motors provide both high line pull and speed ranges. Power up and down, equal speed, planetary reduction with integral automatic brake and electronic hoist drum rotation indicator.

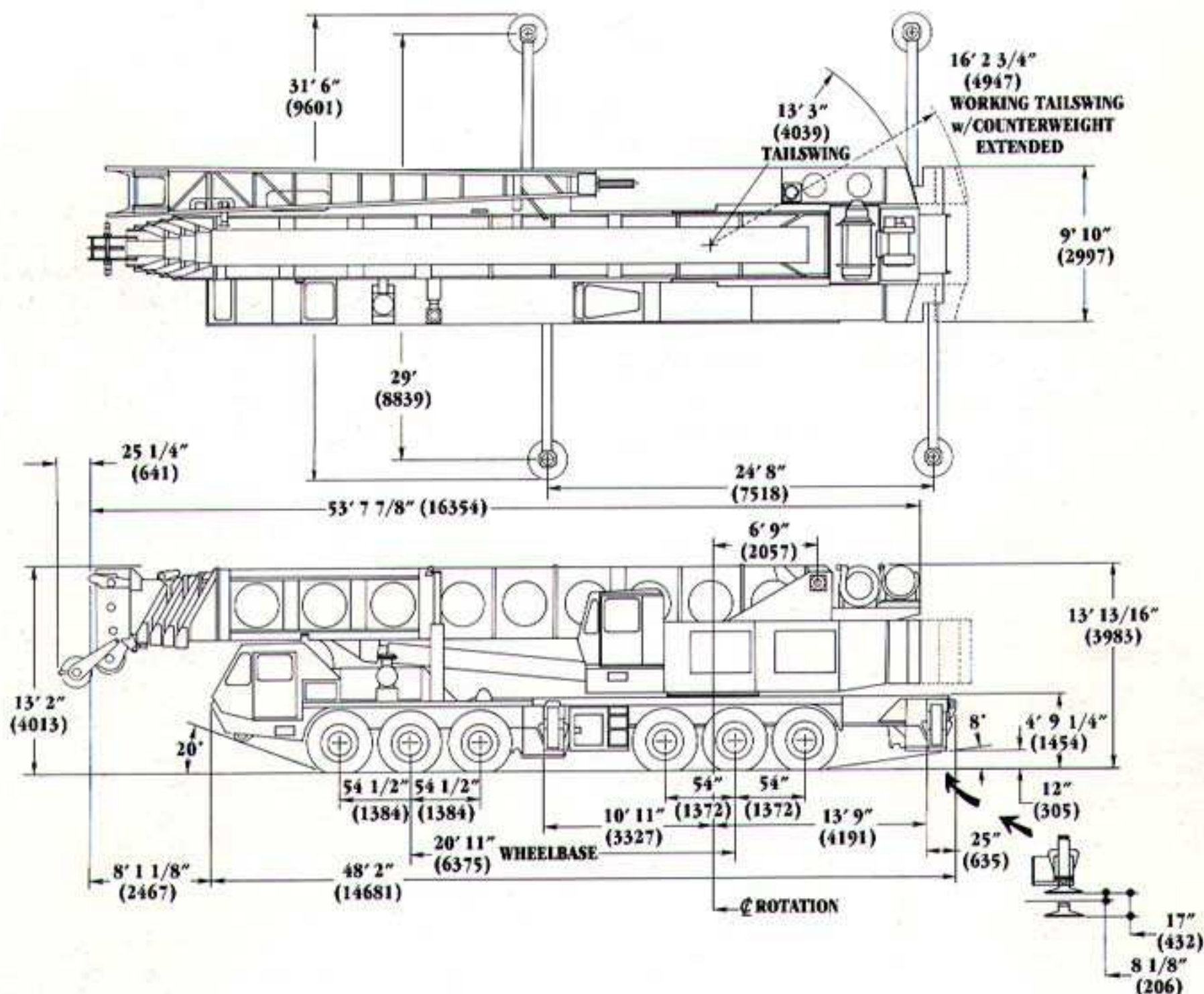
Main Hoist Gearmatic Model 44-26(H) and Grove Auxiliary Hoist HO30B-26(H)

Make/Model		Main	Auxiliary
Maximum single line speed	Bottom Layer	314 FPM (96m/min)	454 FPM (138m/min)
	Intermediate Layer	366 FPM (112m/min)	528 FPM (161m/min)
	Top Layer	419 FPM (128m/min)	601 FPM (183m/min)
Maximum single line pull	Bottom Layer	24,900 lbs. (11295 kg)	16,322 lbs. (7404 kg)
	Intermediate Layer	21,327 lbs. (9674 kg)	14,056 lbs. (6376 kg)
	Top Layer	18,650 lbs. (8460 kg)	12,344 lbs. (5599 kg)
Maximum permissible line pull w/5:1 strength factor		22,760 lbs. (10324 kg)	12,920 lbs. (5861 kg)
Maximum rope stowage		950 ft. of 1 in. dia. rope (290m of 25.4mm)	830 ft. of 3/4 in. dia. rope (253m of 19.1mm)

*Denotes optional equipment

Dimensions

TM1500



Grove Worldwide - World Headquarters
1565 Buchanan Trail East
Shady Grove, Pennsylvania 17256
Phone: (717) 597-8121 Fax: (717) 597-4062

Grove North America
P. O. Box 21, Shady Grove, Pennsylvania 17256
Western Hemisphere, Asia/Pacific
Phone: (717) 597-8121 Fax: (717) 597-4062

Grove Europe*
Sunderland, England SR4 6TT
Europe, Africa, Middle East, Near East
Phone: (0191) 565-6281 Fax: (0191) 564-0442

* Grove Europe Limited, Registered in England, Number 1845128, Registered office, Crown Works, Pallion, Sunderland, Tyne & Wear, England SR4 6TT.

Constant improvement and engineering progress make it necessary that we reserve the right to make specification, equipment, and price changes without notice. Illustrations shown may include optional equipment and accessories and may not include all standard equipment.

Distributed By:

Form No: SBTM1500

Part No: 3-415 495-5M

Printed in U.S.A.

Courtesy of Crane Market