

Grove rough-terrain cranes

Features and benefits





Grove is a leading manufacturer of the industry's most reliable cranes. The full line of Grove mobile hydraulic cranes ranges from 8 t to 450 t, (8.5 USt to 550 USt) including all-terrain, rough-terrain, truck-mounted and industrial cranes.

Grove rough-terrain cranes are designed to handle tough jobsite conditions. The performance, productivity and operator comfort features allow your operators to work effectively for longer days with less fatigue. Combine those with our reliability, easy maintenance and quality features and you'll agree that Grove rough-terrain cranes are the right choice for your business.



A strong history

Grove was founded by John L. Grove, Dwight Grove and Wayne A. Nicarry. The company began in a small, rented building in the village of Shady Grove, Pa., U.S.

- 1959: Introduced the first rough-terrain and truck-mounted crane models
- 1968: Introduced the RT62S, the world's first rough-terrain "swinger" crane;
shipped the 3000th Grove crane
- 1979: Shipped the 20,000th crane
- 1997: Celebrated its 50th anniversary; shipped the 50,000th Grove crane
- 2002: Manitowoc celebrated 100 years; acquired Grove
- 2012: Manitowoc celebrates 10-year anniversary of Grove acquisition



Performance, productivity and operator comfort

Grove rough-terrain cranes use smart technology and innovations so jobs get done as efficiently as possible. These features are designed to enhance your crew's productivity and help you achieve higher profits.



High-performance cabs

The cabs on Grove rough-terrain cranes feature more glass on all sides so your operators have a clear view of the load and fewer blind spots. The interior has an automotive-style layout for maximum comfort and includes an ergonomic dashboard, tilting and telescoping steering wheel, heat and air conditioning.





Cab tilt

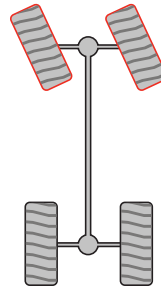
The Vision cab tilts up to 20 degrees, which is especially beneficial on long boom cranes. Operator comfort and overall visibility of the lift is significantly improved, even when the boom is fully extended and equipped with a jib.

Exceptional maneuverability

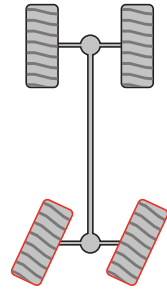
Maneuvering around the job site is easier with Grove rough-terrain cranes. Four-mode steering and driving includes front only, rear only, crab and coordinated to allow your operators to get closer to the lift regardless of congested areas or adverse ground conditions. All modes are controlled through steering wheel and rocker switches, so there's no need for operators to stop and align the wheels.

All Grove rough-terrain cranes feature front and rear cross-axle differential locks, which can be activated when working in difficult terrain.

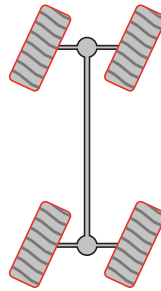
Front only



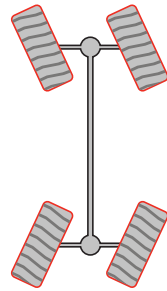
Rear only



Crab



Coordinated





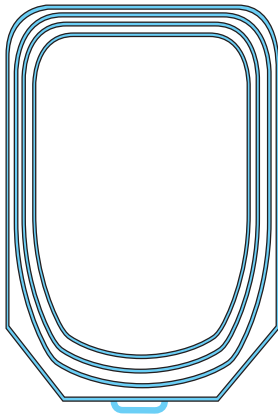
Telescoping options

Grove rough-terrain cranes are available in both synchronized boom and sequence synchronized boom configurations:

- Synchronized boom telescoping allows each boom section to be extended simultaneously with a single-lever control
- Sequence synchronized boom telescoping technology maximizes configuration at load radius and weight

TWIN-LOCK™ boom pinning system

Using only one telescope cylinder to extend the boom sections, the TWIN-LOCK™ system helps to maximize the crane's load chart capacity by eliminating weight inside the extended boom.



Superior boom design

The MEGAFORM™ boom design incorporates a U-shaped cross-section that provides an exceptional strength-to-weight ratio. This means a MEGAFORM™ boom can lift more than a traditional square or rectangular boom. Large wear pads offer superior boom alignment when telescoping, providing an excellent transition of weight between sections allowing you greater lifting capacities at any radius.





Main boom inserts

Main boom inserts are designed to extend the crane's reach.



Boom extensions

Boom extensions expand the versatility of your crane enabling you to work on a wider variety of lifts.

Grove offers several boom extensions including:

- Fixed length, offsettable lattice extension
- Telescopic, offsettable lattice extension
- Bi-fold, offsettable lattice extension



Pick-and-carry charts

Pick-and-carry charts are available for all Grove rough-terrain cranes.

Tier IV engine

Grove rough-terrain cranes use an environmentally friendly, yet powerful, Tier IV engine. This engine emits fewer carbon particles, reduces NOx, and meets strict environmental standards in North America. Tier III engines are available for export only.

Operational aids

Grove rough-terrain cranes are equipped with a graphical load moment indicator (LMI) with Work Area Definition system. The intuitive and user-friendly interface provides a virtual representation of your crane configuration and outrigger position. The Work Area Definition System assists operators in working safely while lifting and positioning loads.





Reliability and easy maintenance

High-performing cranes and comfortable operators are only the beginning. That's why Grove cranes include features that improve reliability and minimize maintenance time — all to keep you more profitable.

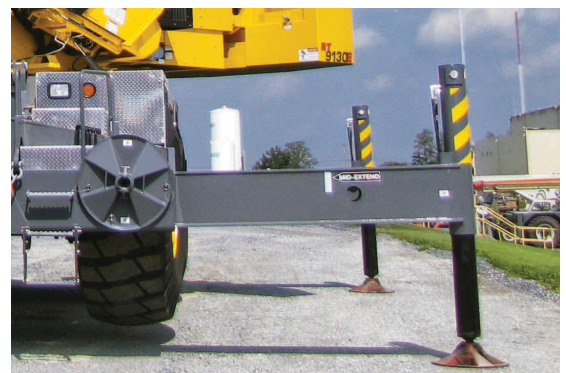
Transportability

Removable front and rear outrigger boxes and the removable counterweight offer convenient transportability. Outrigger boxes can be quickly installed and removed without the use of an assist crane. In addition, the counterweight is designed for quick and easy installation. Both of these features result in less setup time to get your crew to work sooner.



Longevity and protection

Inverted outrigger jacks protect the cylinder rods from exterior contaminants such as sand and dust. A longer seal life reduces maintenance needs to keep your crew productive. Outrigger beams can be extended 0, 50 or 100 percent.





The hydraulic disc brake advantage

Four-wheel hydraulic disc brakes are spring-applied and hydraulically released, resulting in immediate activation as needed. This simple hydraulic system is superior to air or air-over-hydraulic drum brakes on competitive models.

- Eliminates air leaks and problems due to humidity or high temperature variations, and there's no wait for air pressure to build
- No additional air system is required
- One simple hydraulic system eliminates unnecessary components

Easy access for routine maintenance

Steel or aluminum full-length decking provides large open areas for additional storage and accessibility to crane components. The valve cover is easy to access and remove, the flexible mounted steps reduce transport damage, and an anti-slip material on the deck improves footing.

The hoist access platform makes reeving the hoist quick and easy.



Full CAN-Bus wiring

This state-of-the-art, software-based system provides laptop computer troubleshooting and customizable functions that result in easier diagnostics and reduce potential downtime.



CraneSTAR

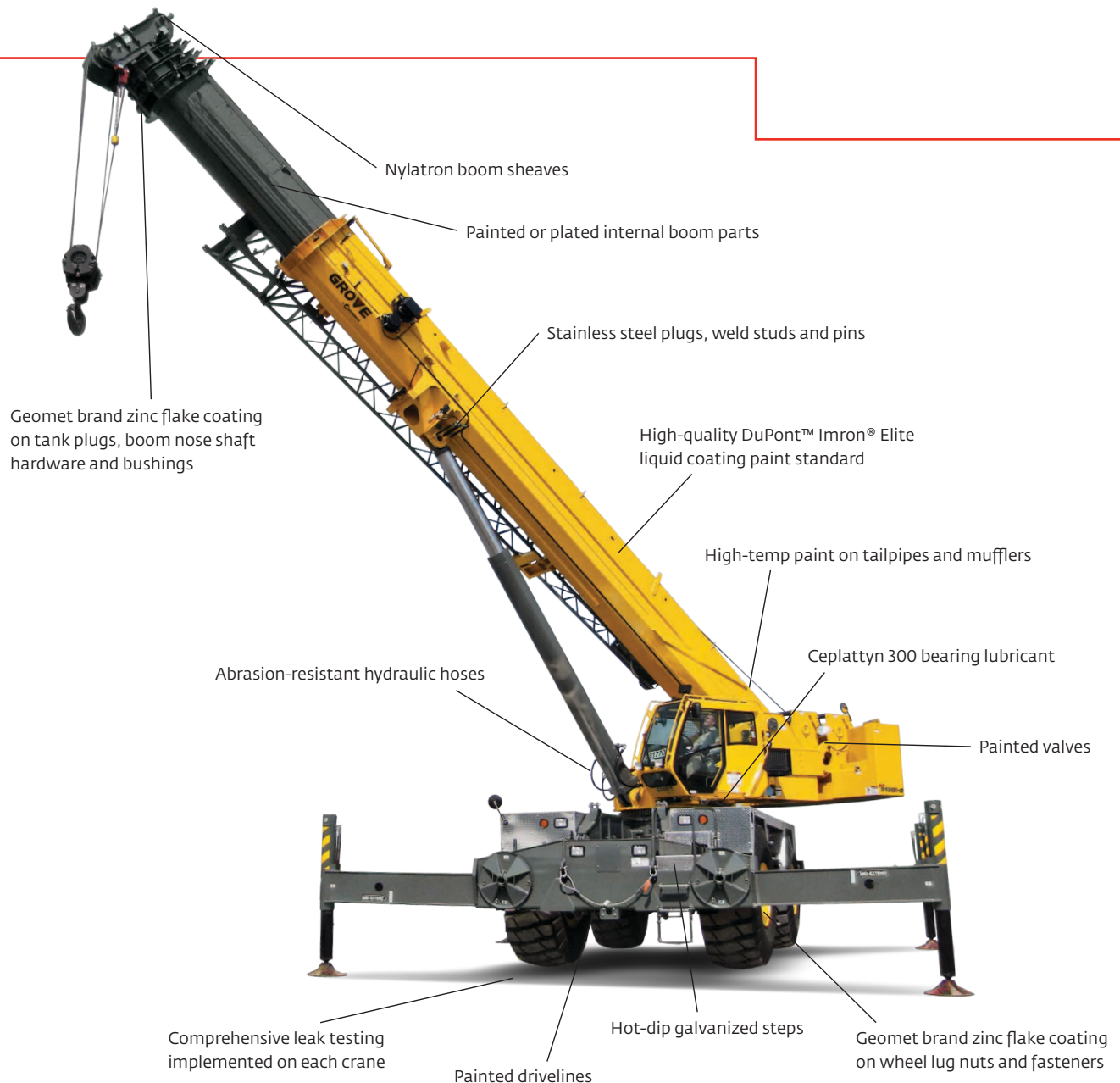
Maximizing uptime

Standard on all Grove rough-terrain cranes, CraneSTAR is the most extensive OEM-produced crane asset management system available today. CraneSTAR leads in a new era of data management and planning for crane owners. It was developed to monitor cranes, jobsites and warehouses to increase fleet productivity, and to decrease operational costs.

- Notifies you to schedule preventive maintenance
- Increases security, which may lead to reduced insurance costs
- Records crane use resulting in higher resale values

Quality

High-quality products last longer and save you money. At Manitowoc, our high-quality components and procedures ensure every rough-terrain crane meets strict standards to protect your investments. As an example, Grove cranes are built and treated to resist rust and other harsh elements to increase the life of the cranes and give you higher resale values.





Comprehensive support

Manitowoc Crane Care is the lifting industry's most comprehensive and advanced service and support network.

Manitowoc Crane Care provides:

- Contact centers, available 24/7
- Comprehensive training
- Global access to parts and service
- The EnCORE rebuild, repair, remanufacture and exchange program
- Technical publications and support

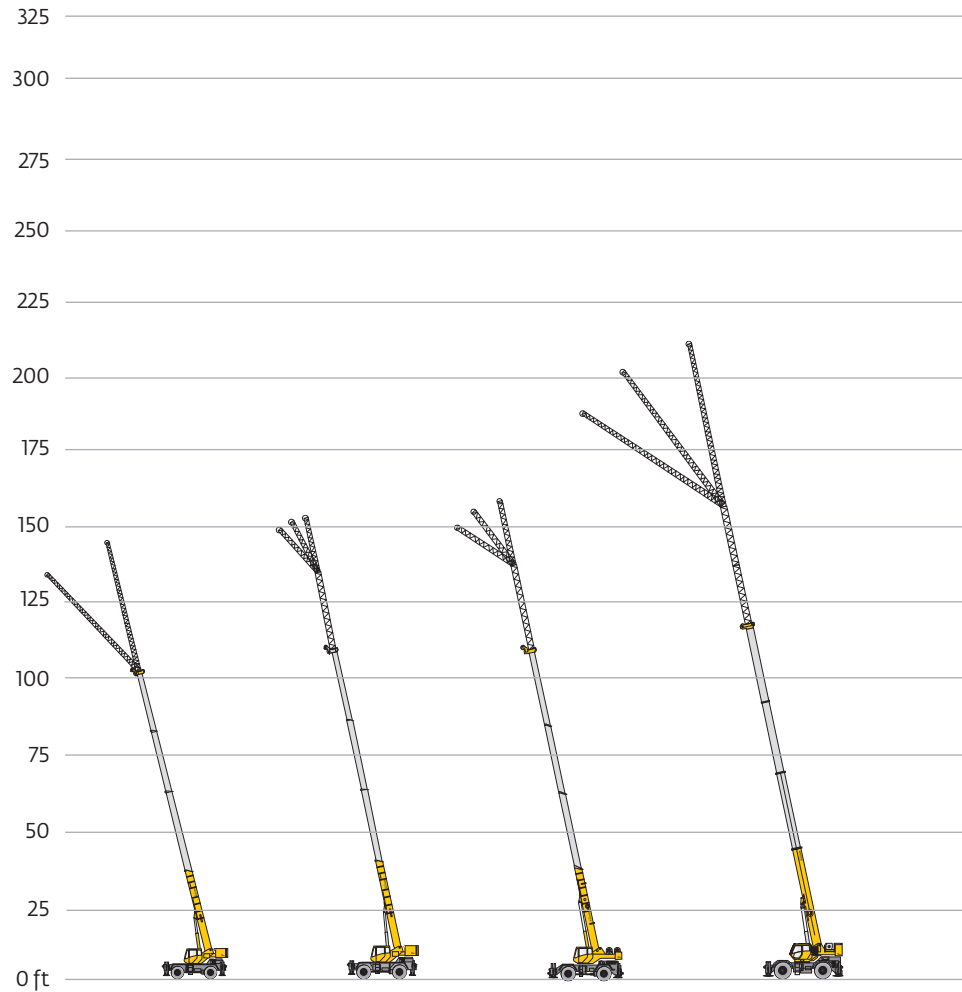


Courtesy of Crane.Market

Model features

Grove rough-terrain cranes provide standard features that other manufacturers simply don't offer. These features mean you'll experience more uptime, higher profits and better resale values when you choose Grove cranes.

Standard = ●



	RT530E-2	RT540E	RT600E	RT765E-2
Maximum capacity	30 t (30 USt)	35 t (40 USt)	40 t (40 USt)/ 45 t (50 USt)	60 t (65 USt)
Boom length	29 m (95 ft)	31 m (102 ft)	32 m (105 ft)	33,5 m (110 ft)
Maximum tip height	45 m (148 ft)	47 m (154 ft)	49 m (161 ft)	65,2 m (214 ft)
Gross vehicle weight	27 404 kg (60,415 lb)	28 775 kg (63,438 lb)	34 613 kg (76,308 lb)	42 333 kg (93,377 lb)
Vision cab	●	●		●
Tilt cab				
Full CAN-Bus	●	●		●
Tier IV engine	●	●	●	●
Inverted outrigger jacks	●	●	●	●
Hoist access platform	●	●	●	●
Removable outrigger box				
Hydraulically installed/removable counterweight				optional
Full-length decking	●	●	●	●
CraneSTAR	●	●	●	●
MEGAFORM™ boom design				●
Four-section boom	●	●	●	●
Five-section boom				
Six-section boom				
TWINLOCK™ pinned boom system				
Full power boom	●	●	●	●
Main boom inserts				optional
Boom extensions	optional	optional	optional	optional
Graphic LMI with Work Area Definition System	●	●	●	●



RT770E	RT880E	RT890E	RT9130E-2	RT9150E
65 t (70 USt)	75 t (80 USt)	80 t (90 USt)	120 t (130 USt)	135 t (150 USt)
42 m (138 ft)	39 m (128 ft)	43,2 m (142 ft)	48,8 m (160 ft)	60 m (197 ft)
67,3 m (221 ft)	70,6 m (232 ft)	73 m (240 ft)	85 m (279 ft)	95,3 m (313 ft)
43 914 kg (96,812 lb)	49 417 kg (108,944 lb)	53 061 kg (116,978 lb)	78 678 kg (173,453 lb)	87 900 kg (193,785 lb)
●	●	●	●	●
	●	●	●	●
●	●	●	●	●
●	●	●	●	●
●	●	●	●	●
			●	●
optional	●	●	●	●
●	●	●	●	●
●	●	●	●	●
	●			
●		●	●	
				●
				●
●	●	●	●	
optional		optional	optional	optional
optional	optional	optional	●	●
●	●	●	●	●

Manیتowoc Cranes

Regional headquarters

Americas

Manیتowoc, Wisconsin, USA

Tel: +1 920 684 6621

Fax: +1 920 683 6277

Shady Grove, Pennsylvania, USA

Tel: +1 717 597 8121

Fax: +1 717 597 4062

Europe, Middle East, Africa

Ecully, France

Tel: +33 (0)4 72 18 20 20

Fax: +33 (0)4 72 18 20 00

China

Shanghai, China

Tel: +86 21 6457 0066

Fax: +86 21 6457 4955

Greater Asia-Pacific

Singapore

Tel: +65 6264 1188

Fax: +65 6862 4040

Regional offices

Americas

Brazil

Alphaville

Mexico

Monterrey

Chile

Santiago

Europe, Middle East,

Africa

France

Baudemont

Cergy

Decines

Germany

Langenfeld

Italy

Lainate

Netherlands

Breda

Poland

Warsaw

Portugal

Baltar

Russia

Moscow

South Africa

Johannesburg

U.A.E.

Dubai

U.K.

Buckingham

China

Beijing

Chengdu

Guangzhou

Xian

Greater Asia-Pacific

Australia

Brisbane

Melbourne

Sydney

India

Chennai

Delhi

Hyderabad

Pune

Korea

Seoul

Philippines

Makati City

Singapore

Factories

Brazil

Passo Fundo

China

TaiAn

Zhangjiagang

France

Charlieu

Moulins

Germany

Wilhelmshaven

India

Pune

Italy

Niella Tanaro

Portugal

Baltar

Fânzeres

Slovakia

Saris

USA

Manیتowoc

Port Washington

Shady Grove

This document is non-contractual. Constant improvement and engineering progress make it necessary that we reserve the right to make specification, equipment, and price changes without notice. Illustrations shown may include optional equipment and accessories and may not include all standard equipment.

For more information on the benefits Grove rough-terrain cranes can offer you, call your local dealer or visit www.manیتowoc.com/cranesdealer