

# GROVE®

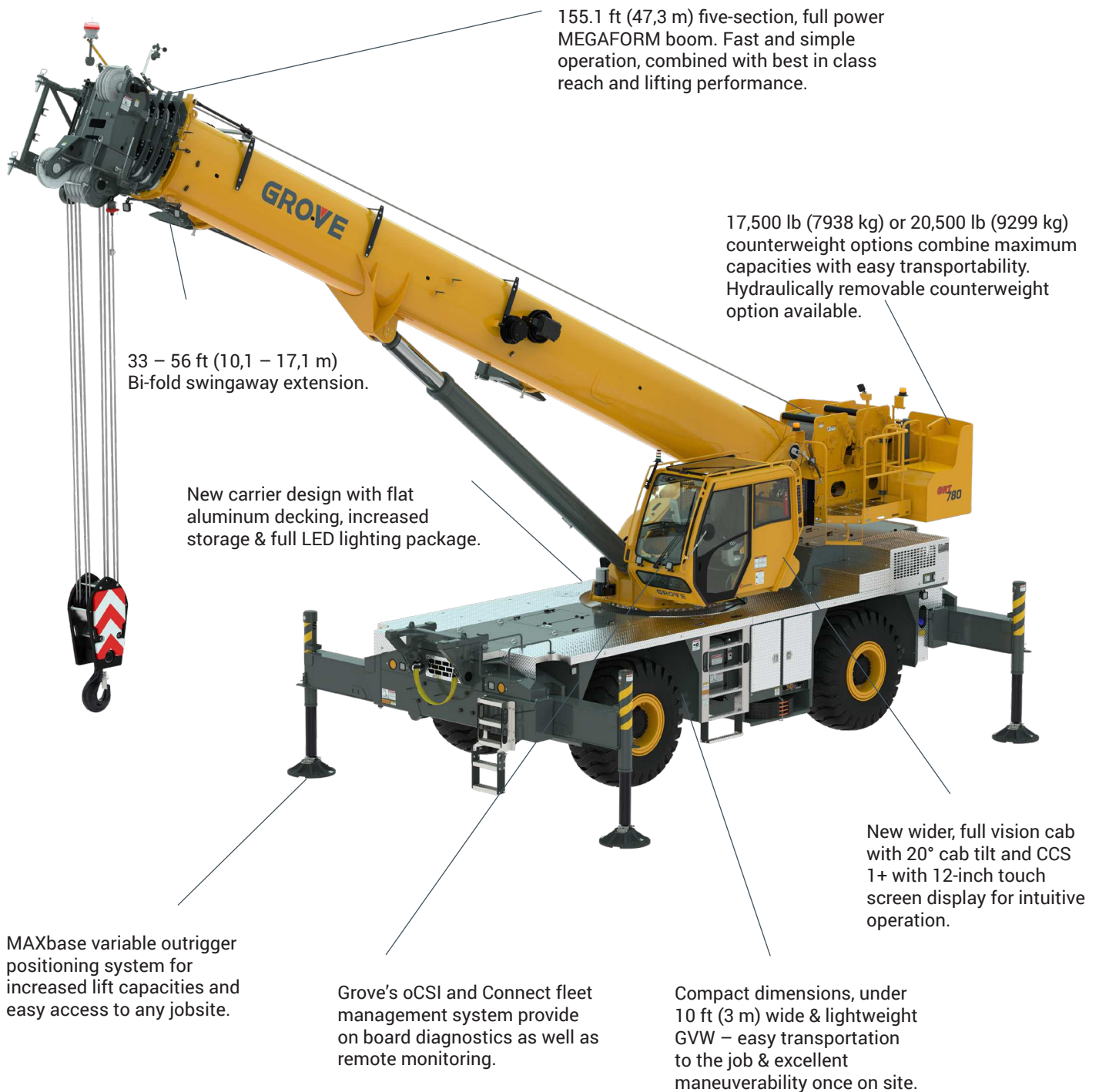
# GRT780

**Capacity:** 80 USt (80 t)

**Main boom:** 155.1 ft (47,3 m)







**Max. boom extension:** 33 ft – 56 ft (10.1 m – 17.1 m)

**Max. tip height:** 220 ft (67 m)



# GRT780

- The same Crane Control System you've come to expect on Grove Rough Terrain cranes, now on a single 12 inch (30.5 cm) touchscreen display
- Simple, intuitive functionality for quick set-up and enhanced operation
- New driving mode includes steering indication, fore and aft as well as side to side slope indication, travel speed and more
- Asymmetrical outrigger positioning systems that allows for maximum accessibility on any jobsite
- Provides increased capacities vs. standard 360° load charts for increased utilization & lower project costs
- Panorama view via the CCS display provides real time visual feedback to the operator with built in function stops when limits reached
- Enhanced diagnostics and monitoring systems for easy serviceability
- On-board monitoring of all hydraulic pressures from the cab
- On-board calibration of sensors via use of day code
- Telematics system that provides easy access to your complete fleet in real time
- View live crane activity, configuration, RCL data, GPS, faults, hours and more
- Create reports based around maintenance programs, crane utilization, crane performance, software status, maintenance alerts, etc.
- Manage fleets with automatic maintenance alerts, service-related observations, and parts ordering before dispatch

	39.2 ft - 155.1ft				20,500 lb				100%				360°								
					Pounds																
Radius (ft)	Main Boom Length (ft)																				
Mode	39.2	53.7	53.7	68.2	68.2	68.2	82.7	82.7	82.7	97.2	97.2	97.2	111.7	111.7	111.7	126.2	126.2	126.2	140.6	140.6	155.1
	A, X, B	A	X, B	A	X	B	A	X	B	A	X	B	A	X	B	A	X	B	A, X	B	A, X, B
8	160,000 (73.5)	46,650 (78.5)	117,500 (78.5)	-	-	-	-	-	-	-	-	-	-	-	-	-	-	-	-	-	-
10	135,000 (70.5)	46,650 (76.5)	117,500 (76.5)	46,500 (79.5)	57,850 (80)	37,950 (80)	-	-	-	-	-	-	-	-	-	-	-	-	-	-	-
12	120,500 (67)	46,650 (74)	117,500 (74)	46,500 (78)	57,850 (78)	37,950 (78)	*46,350 (80)	*57,700 (80)	*37,800 (80)	-	-	-	-	-	-	-	-	-	-	-	-
15	103,500 (62)	46,650 (70.5)	102,500 (70.5)	46,500 (75.5)	57,850 (75.5)	37,950 (75.5)	46,350 (78.5)	57,700 (78.5)	37,800 (78.5)	*29,000 (80)	*55,450 (80)	*37,700 (80)	-	-	-	-	-	-	-	-	-
20	80,750 (53)	46,650 (64.5)	79,750 (64.5)	46,500 (71)	57,850 (71)	37,950 (71)	46,350 (74.5)	57,700 (74.5)	37,800 (75)	29,000 (77.5)	55,450 (77.5)	37,700 (77.5)	13,550 (79.5)	39,500 (79.5)	37,650 (79.5)	*8,520 (80)	*28,500 (80)	*29,000 (80)	-	-	-
25	61,050 (42.5)	46,650 (58.5)	60,100 (58.5)	46,500 (66)	57,850 (66.5)	37,950 (66.5)	46,350 (71)	57,700 (71)	37,800 (71)	29,000 (74.5)	55,450 (74.5)	37,700 (74.5)	13,550 (77)	39,500 (77)	37,650 (77)	8,520 (79)	28,500 (79)	29,000 (79)	*21,350 (80)	*23,300 (80)	-
30	48,000 (27.5)	46,650 (51.5)	47,100 (51.5)	46,500 (61.5)	49,100 (61.5)	37,950 (61.5)	45,300 (67)	50,350 (67)	37,800 (67.5)	29,000 (71.5)	50,100 (71.5)	37,700 (71.5)	13,550 (74)	36,400 (74)	37,150 (74)	8,520 (76.5)	28,500 (76.5)	29,000 (76.5)	21,350 (78.5)	23,300 (78.5)	18,000 (80)
35	-	41,150 (44)	37,900 (44)	42,400 (56.5)	39,900 (56.5)	37,350 (56.5)	40,450 (63.5)	41,150 (63.5)	35,950 (63.5)	29,000 (68)	42,000 (68)	33,850 (68)	13,550 (71.5)	32,800 (71.5)	32,300 (71.5)	8,520 (74)	28,500 (74)	29,000 (74)	21,350 (76)	23,300 (76)	18,000 (78)
40	-	32,550 (34.5)	29,600 (34.5)	34,300 (51)	31,050 (51)	28,800 (51)	35,100 (59.5)	32,300 (59.5)	30,050 (59.5)	27,050 (64.5)	33,550 (64.5)	29,450 (65)	13,550 (68.5)	29,800 (68.5)	28,150 (68.5)	8,520 (71.5)	27,900 (71.5)	27,050 (71.5)	21,350 (74)	23,300 (74)	18,000 (76)
45	-	25,650 (21.5)	23,050 (21.5)	27,600 (45)	24,700 (45)	22,650 (45)	28,600 (55)	25,900 (55)	23,800 (55)	24,600 (61.5)	27,150 (61.5)	25,000 (61.5)	13,550 (66)	27,250 (66)	24,750 (66)	8,520 (69)	26,350 (69)	23,900 (69)	21,350 (72)	22,700 (72)	18,000 (74)
50	-	-	-	22,600 (38)	19,950 (38)	17,950 (38)	23,800 (50.5)	21,150 (50.5)	19,200 (50.5)	22,550 (58)	22,400 (58)	20,350 (58)	13,550 (63)	22,850 (63)	21,500 (63)	8,520 (66.5)	23,050 (66.5)	21,200 (66.5)	20,650 (69.5)	20,500 (70)	18,000 (72)
55	-	-	-	18,650 (29.5)	16,150 (29.5)	14,000 (29.5)	20,100 (45.5)	17,500 (45.5)	15,450 (45.5)	20,350 (54)	18,700 (54)	16,750 (54)	13,550 (60)	19,150 (60)	17,850 (60)	8,520 (64)	19,500 (64)	18,350 (64)	18,950 (67.5)	18,400 (67.5)	17,450 (70)
60	-	-	-	15,550 (17)	13,150 (17)	10,850 (17)	17,150 (40)	14,550 (40)	12,400 (40)	17,400 (50)	15,800 (50)	13,800 (50.5)	13,550 (57)	16,150 (57)	15,000 (57)	8,520 (61.5)	16,550 (61.5)	15,450 (61.5)	16,950 (65)	15,950 (65.5)	15,900 (68)
65	-	-	-	-	-	-	14,700 (34)	12,100 (34)	9,910 (34)	15,050 (46)	13,300 (46)	11,350 (46)	13,550 (53.5)	13,750 (53.5)	12,650 (53.5)	8,520 (59)	14,150 (59)	13,100 (59)	14,600 (63)	13,600 (63)	14,000 (66)
70	-	-	-	-	-	-	12,650 (26)	10,050 (26)	7,810 (26)	13,050 (41.5)	11,300 (41.5)	9,360 (41.5)	13,350 (50)	11,750 (50)	10,700 (50)	8,520 (56)	12,200 (56)	11,150 (56)	12,650 (60.5)	11,600 (60.5)	12,000 (64)
75	-	-	-	-	-	-	10,900 (13.5)	8,330 (13.5)	6,040 (14)	11,350 (36.5)	9,580 (36.5)	7,640 (36.5)	11,700 (46.5)	10,050 (46.5)	9,100 (46.5)	8,520 (53)	10,500 (53)	9,540 (53)	11,000 (58)	9,960 (58)	10,350 (62)
80	-	-	-	-	-	-	-	-	-	9,880 (30.5)	8,080 (30.5)	6,150 (30.5)	10,250 (42.5)	8,630 (42.5)	7,650 (42.5)	8,520 (50)	9,120 (50)	8,080 (50)	9,610 (55.5)	8,520 (55.5)	8,960 (60)
85	-	-	-	-	-	-	-	-	-	8,580 (23)	6,780 (23)	4,850 (23.5)	9,040 (38.5)	7,380 (38.5)	6,380 (38.5)	8,520 (47)	7,890 (47)	6,830 (47)	8,400 (53)	7,290 (53)	7,740 (57.5)
90	-	-	-	-	-	-	-	-	-	7,440 (10.5)	5,650 (10.5)	3,730 (11)	7,910 (33.5)	6,270 (33.5)	5,240 (33.5)	8,240 (43.5)	6,820 (43.5)	5,740 (43.5)	7,350 (50)	6,210 (50.5)	6,680 (55)
95	-	-	-	-	-	-	-	-	-	-	-	-	6,920 (28)	5,290 (28)	4,240 (28)	7,290 (40)	5,880 (40)	4,780 (40)	6,420 (47.5)	5,260 (47.5)	5,750 (53)
100	-	-	-	-	-	-	-	-	-	-	-	-	6,040 (21)	4,410 (21)	3,350 (21)	6,430 (36)	5,030 (36)	3,910 (36)	5,600 (44.5)	4,420 (44.5)	4,900 (50.5)
105	-	-	-	-	-	-	-	-	-	-	-	-	5,250 (7.5)	3,640 (7.5)	2,550 (7.5)	5,660 (31.5)	4,260 (31.5)	3,130 (31.5)	4,860 (41)	3,670 (41.5)	4,140 (48)
110	-	-	-	-	-	-	-	-	-	-	-	-	-	-	-	4,970 (26)	3,570 (26)	2,990 (26)	4,180 (37.5)	3,450 (38)	3,450 (45)
115	-	-	-	-	-	-	-	-	-	-	-	-	-	-	-	4,340 (19)	2,950 (19.5)	2,370 (19.5)	3,540 (34)	2,370 (34)	2,830 (42)
120	-	-	-	-	-	-	-	-	-	-	-	-	-	-	-	-	-	-	2,960 (29.5)	1,790 (29.5)	2,270 (39)
125	-	-	-	-	-	-	-	-	-	-	-	-	-	-	-	-	-	-	2,430 (24.5)	1,260 (24.5)	1,740 (36)
130	-	-	-	-	-	-	-	-	-	-	-	-	-	-	-	-	-	-	1,950 (17.5)	-	1,250 (32)

NOTE: ( ) Boom angles are in degrees.  
\*This capacity is based on maximum boom angle.  
\*Special equipment required to lift this capacity.

