



**GROVE**<sup>®</sup>  
worldwide



# RT875

Rough-Terrain Hydraulic Crane Specifications

# Superstructure specifications

<b>Boom</b>	36 ft. to 114 ft. (11.0m - 34.7m) total length four section Trapezoidal power pinned boom. Telescoping sections slide on adjustable and replaceable Nylatron wear pads. Maximum Tip Height: 122 ft. (37.1m).
<b>Optional Boom</b>	36 ft. to 114 ft. (11.0m - 34.7m) total length four section Trapezoidal full power boom. Telescoping sections slide on adjustable and replaceable Nylatron wear pads. Maximum Tip Height: 122 ft. (37.1m).
<b>Swingaway Extension</b>	33 ft. (10.0m) lattice swingaway boom extension stows alongside base boom section when not in use, offsettable at 2°, 15° or 30°. Maximum Tip Height: 155 ft. (47.2m)
<b>*Optional Telescopic Swingaway</b>	33 ft. - 58 ft. (10m - 17.7m) telescopic lattice swingaway extension with offset links, offsettable at 2°, 15° or 30°. Stows alongside base boom section when not in use. Maximum Tip Height: 178 ft. (54.2m).
<b>*Optional Jib</b>	14 ft. (4.3m) lattice sections combine with a 32 ft. (9.8m) tip section to provide 46 ft. (14m), 60 ft. (18.2m), 74 ft. (22.5m) and 88 ft. (26.8m) jib lengths. Jib is cable suspended and can be offset at 5°, 17° and 30°. Maximum Tip Height: 206 ft. (62.7m).
<b>Boom Nose</b>	Six Nylatron sheaves mounted on heavy duty tapered roller bearings with removable pin-type rope guards. *Optional removable auxiliary boom nose with removable pin type rope guard.
<b>Boom Elevation</b>	Two double acting hydraulic cylinders with integral holding valves provide elevation from -4° to 80°.
<b>Load Moment &amp; Anti-Two Block System</b>	Standard load moment and anti-two block system with audio-visual warning and control lever lockout. These systems provide electronic display of boom angle, length, radius, tip height, relative load moment, maximum permissible load, load indication and warning of impending two-block condition.
<b>Cab</b>	Full vision, all steel fabricated with acoustical lining and tinted safety glass throughout. Complete driving controls and engine instrumentation. Dash mounted control levers for all craning functions. Other standard features include: hinged skylight, sliding left side door and sliding right side window, electric windshield wash-wipe, propane heater, circulating air fan, fire extinguisher, seat belt and manual skylight wiper.
<b>Swing</b>	Ball bearing swing circle with 360° continuous rotation. Grove planetary glide-swing with foot applied multi-disc brake. Spring applied hydraulically released parking brake and hand operated 360° mechanical house lock operated from cab. Maximum speed: 2 RPM.

<b>Counterweight</b>	Integral with turntable mast. Standard basic machine with main hoist and P.P. boom: 14,000 lbs. (6350 kg).
----------------------	---

## HYDRAULIC SYSTEM

<b>Pumps</b>	Four main gear pumps, combined capacity 178 GPM (674 LPM) driven by carrier engine through PTO with pump disconnect.
<b>Valves</b>	Precision four way double acting control valves, 4 individual valve banks permit simultaneous control of multiple crane functions.
<b>Filter</b>	Return line type, full flow with bypass protection and service indicator. Replaceable cartridge with micron filtration rating of 7/17/22.
<b>Reservoir</b>	225 gallon (852 L) with spin-on breather filter, external sight-level gauge, clean out access, strap mounted to frame.
<b>Oil Filter</b>	Remote mounted with thermostatically controlled hydraulic motor driven fan.
<b>Pressure Check Panel</b>	System pressure test panel permits easy verification of circuit pressures.

## HOIST SPECIFICATIONS

Power up and down equal speed, planetary reduction with automatic spring applied multi-disc brake and electronic drum rotation indicator and hoist drum cable follower.

### Main and \*Auxiliary Hoist Grove HO30B-26

Make/Model		High Range	Low Range
<b>Maximum single line speed</b>	Bottom layer	426 FPM (130m/min)	213 FPM (65m/min)
	Intermediate layer	496 FPM (151m/min)	248 FPM (75m/min)
	Top layer	564 FPM (172m/min)	282 FPM (86m/min)
<b>Maximum single line pull</b>	Bottom layer	8,161 lbs. (3701 kg)	16,322 lbs. (7403 kg)
	Intermediate layer	7,028 lbs. (3187 kg)	14,056 lbs. (6375 kg)
	Top layer	6,172 lbs. (2799 kg)	12,344 lbs. (5596 kg)
<b>Maximum permissible line pull</b>		12,920 lbs. (5860 kg)	
<b>w/5:1 strength factor</b>		3/4 in. (19mm) 18x19 class	
<b>Maximum rope stowage</b>	832 ft. (254m) of 3/4 in. (19mm)	Note: 800 ft. (244m) length of wire rope supplied with basic standard unit.	

\*Denotes optional equipment

# Carrier specifications

<b>Frame</b>	High strength alloy steel all welded box-type construction with integral outrigger housings and front/rear lifting, towing and tie down lugs.
<b>Outrigger System</b>	Hydraulic single stage double box telescopic beam and jack outriggers with integral holding valves. All steel fabricated quick release type outrigger floats, 30.5 in. (775mm) diameter. Maximum calculated outrigger pad load 105,313 lbs. (47,770 kg).
<b>Outrigger Controls</b>	Located in cab on right side console requires two hand operation. Crane level indicator located in cab.
<b>Engine</b>	Cummins 6CTA 8.3L six cylinder turbo-charged diesel, 250 bhp (186 kw) (Gross) @ 2,500 RPM. Maximum torque 650 ft. lbs. (90 kg/m) @ 1,800 RPM.
<b>Fuel Tank Capacity</b>	100 gallons (379 L)
<b>Electrical System</b>	Two 12-volt - maintenance free batteries, 815 CCA @ 0°F. 24 volt starting.
<b>Drive</b>	4 x 4
<b>Steering</b>	Fully independent power steering: Front: Full hydraulic controlled by steering wheel. Rear: Full hydraulic hand lever controlled. Provides infinite variations of 4 main steering modes - front only, rear only, crab and coordinated. Rear wheel steer indicator.
<b>Transmission</b>	Remote mounted powershift with 6 speeds forward and 6 reverse, 3 in high range, 3 in low range. Rear axle disconnect for 4x2 travel.
<b>Axles</b>	Front: Drive-steer with differential and planetary reduction hubs (rigid mounted to the chassis). Rear: Drive-steer with differential and planetary reduction hubs, pivot mounted at the center of chassis frame, providing up to 12 in. oscillation (305mm). Optional: *No-spin differential on rear axle.
<b>Oscillation Lockouts</b>	Automatic full hydraulic lockouts on rear axle permits oscillation only with boom centered over the front. Oscillation lockout override control.

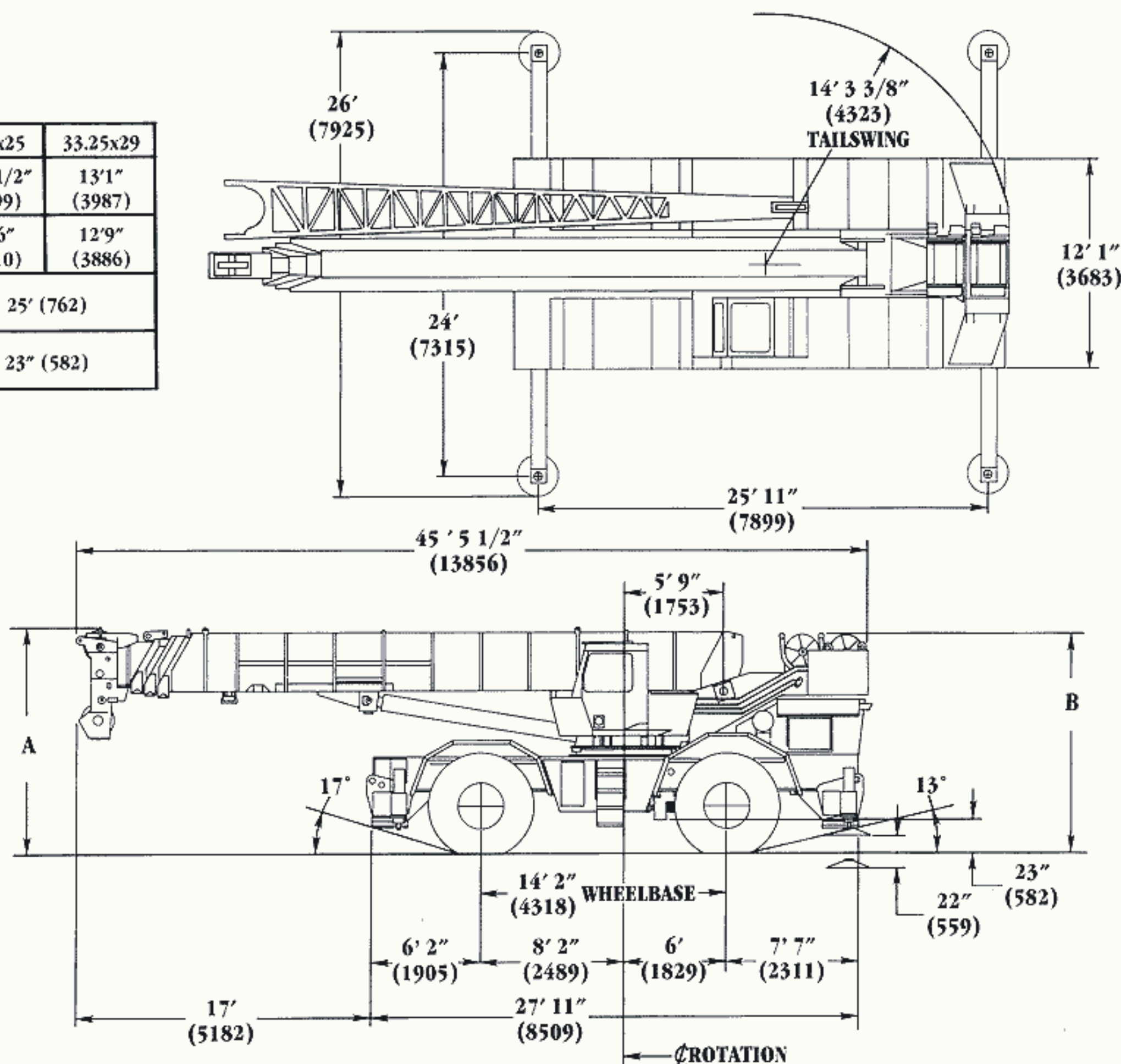
<b>Tires</b>	29.5 x 25 - 28 PR (E-3) Earthmover type, tubeless. *Optional - 33.25 x 29 - 26 PR.
<b>Brakes</b>	Dual braking system, full air operating on all wheels. Spring-applied, air released parking brake operating on all wheels.
<b>Lights</b>	Full lighting package including turn indicators, head, tail, brake and hazard warning lights.
<b>Maximum Speed</b>	18.7 MPH (30.1 kph)
<b>Maximum Gradeability</b>	127% (Theoretical based on 118,000 lbs. [53,525 kg] GVW). 29.5 x 25 tires, pump disengaged.
<b>Gross Vehicle Weight &amp; Axle Loads</b>	BASIC STANDARD MACHINE Front: 54,940 lbs. (24,920 kg) Rear: 56,920 lbs. (25,820 kg) G.V.W.: 111,860 lbs. (50,740 kg)
<b>Miscellaneous Standard Equipment</b>	Full width steel fenders, dual rear view mirrors, electronic back-up alarm, light package, air dryer, tire inflation kit, hydraulic oil temperature gauge.
<b>Optional Equipment</b>	* Hookblocks * Spare wheel assembly * Pintle hook front/rear * Tow winch - front mounted * Worklights * Cab spotlight * Low oil pressure, high water temp. A/V warning system * Mechanical outrigger spinlocks * 360° rotating beacon * Engine block heater * Tool kit * Dual base boom mounted floodlights * Diesel heater/defroster

\*Denotes optional equipment.

# Dimensions

# RT875

TIRE SIZE	29.5x25	33.25x29
OAH - A	12'9 1/2" (3899)	13'1" (3987)
OAH - B	12'6" (3810)	12'9" (3886)
TURNING RADIUS	25' (762)	
GROUND CLEARANCE	23" (582)	



**GROVE**<sup>®</sup>  
worldwide

Grove Worldwide - World Headquarters  
1565 Buchanan Trail East  
Shady Grove, Pennsylvania 17256  
Phone: (717) 597-8121 Telex: 1842308 Fax: (717) 597-4062

Grove North America  
P.O. Box 21, Shady Grove, Pennsylvania 17256  
Western Hemisphere, Asia/Pacific  
Phone: (717) 597-8121 Telex: 1842308 Fax: (717) 597-4062

Grove Europe\*  
Sunderland, England SR4 6TT  
Europe, Africa, Middle East, Near East  
Phone: (091) 565-6281 Telex: 53484 CRANES G Fax: (091) 564-0442

\* Grove Europe Limited, Registered in England, Number 1845128, Registered office, Crown Works, Pallion, Sunderland, Tyne & Wear, England SR4 6TT.

Constant improvement and engineering progress make it necessary that we reserve the right to make specification, equipment, and price changes without notice. Illustrations shown may include optional equipment and accessories and may not include all standard equipment.

Distributed By: