



GCK3045

Grove Mobile Crane Product Line

GCK3045: « A Lift for The City »



2 GCK3045

Grove Maniowoc National Crane Potain

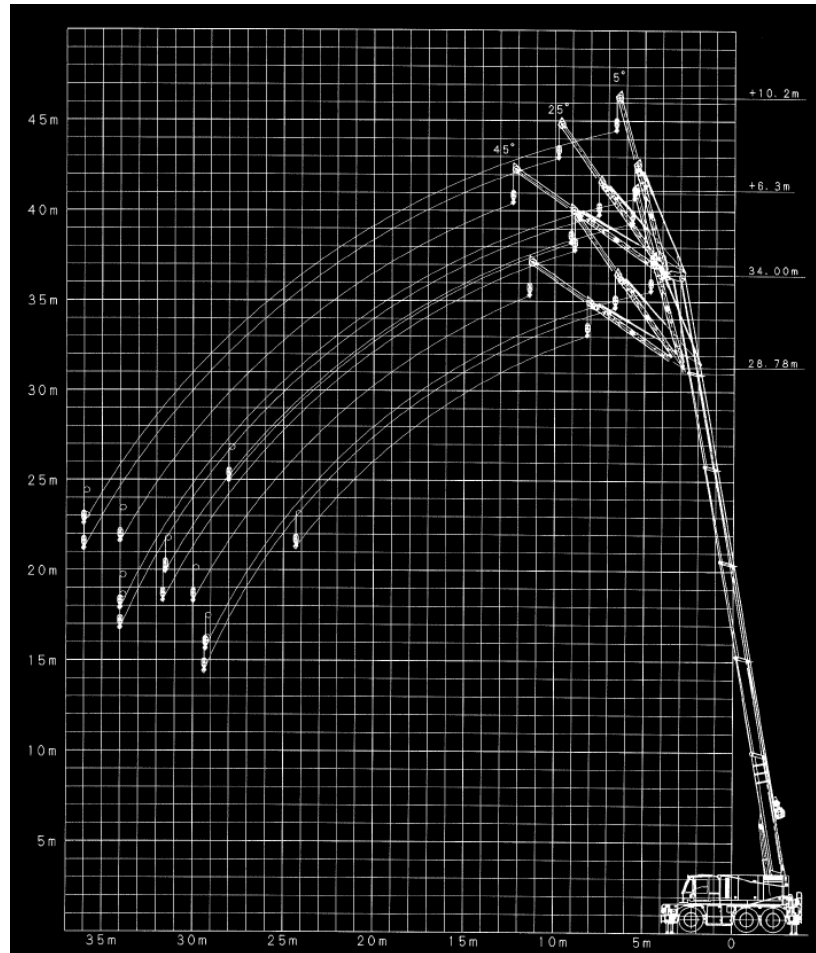


Introducing the GCK3045



- ▶ Rating 45 T
- ▶ 6-section boom 34 m
- ▶ Swingaway (twist-jib) 6,3 / 10,2 m
- ▶ HINO 6 cylinder engine, 330 kW
- ▶ Hydrostatic drive (HST)
- ▶ Zero additional counterweight
- ▶ GVW 36 t incl. twist-jib, hookblock, 6 x 6 drive, 300 kg payload

Boom: Longest in class



GCK3045 6 section compact boom;
length: 34 m
Plus optional twist jib 6,3/10,2 m
(AC40 City boom length: 31,2 m)

Main boom advantage: 2,8 m

***Long reach on radius and 3 m
additional height !***

Dimensions: Very compact

Width: 2,55 m
for narrow access sites

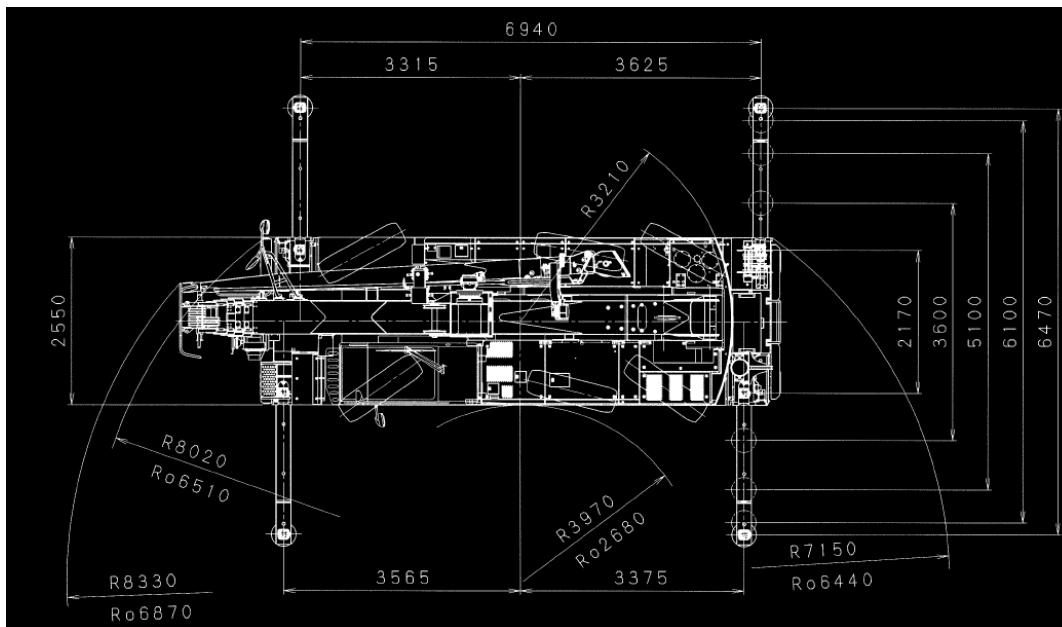
Length: 9,07 m
excellent manoeuvrability

Height: 3,00 m
enter factory doors

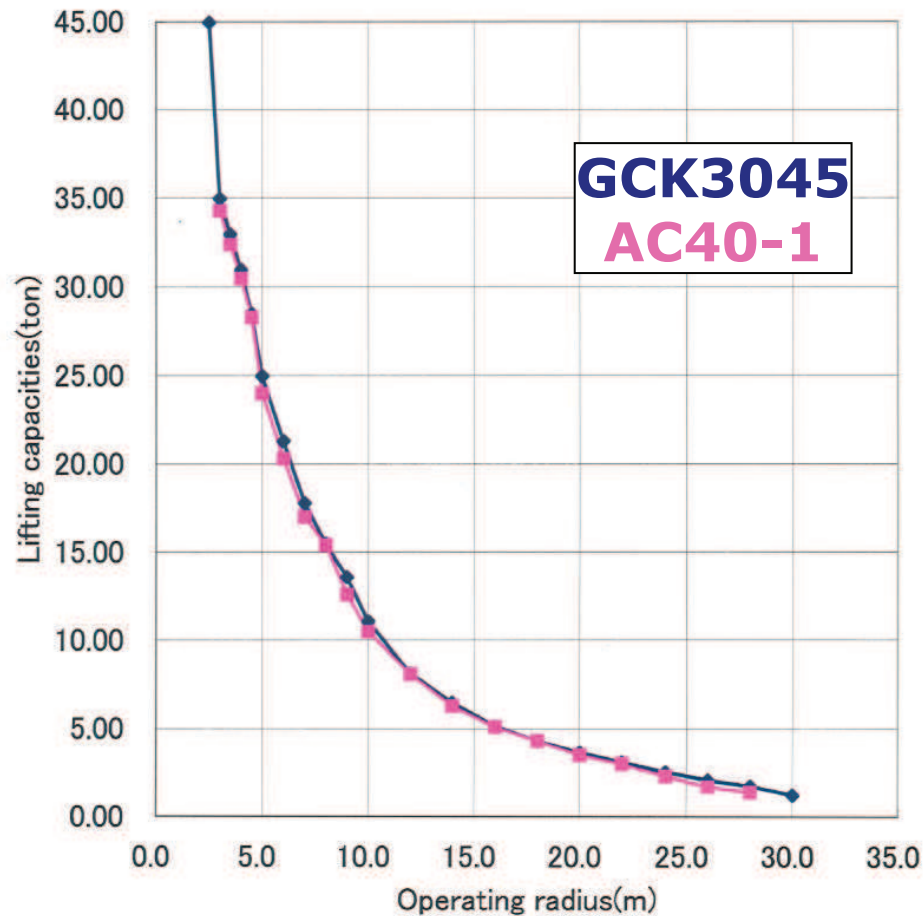
**Tightest turning radius
in class**

**12T per axle fully equipped
(no additional counterweight)**

**5 outrigger positions
with staggered setting**



Loadcharts: Strongest in class



GCK3045 Max. capacity:
45t (over rear)

AC40 Max. capacity: 40t (over rear)

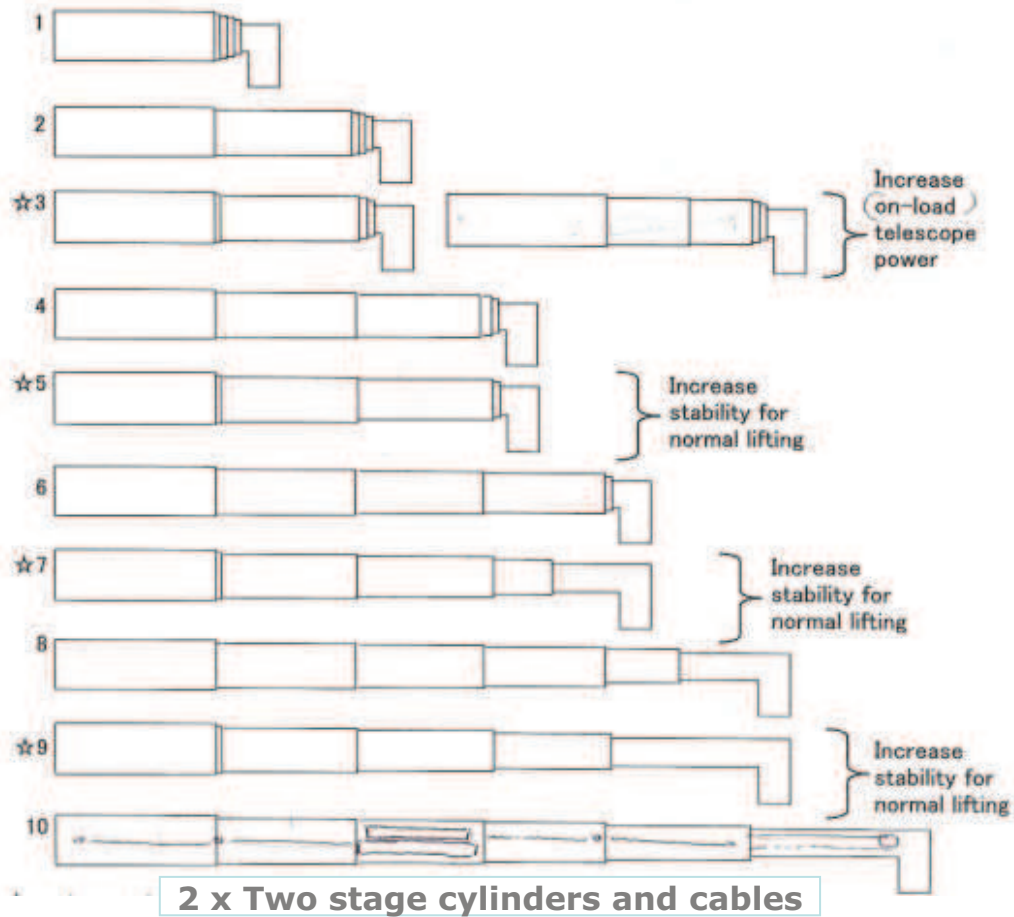
Overall lifting advantage: >5%

31m boom advantage: >12%

***Long boom combined
with strength !***

(HD runner charts comparable)

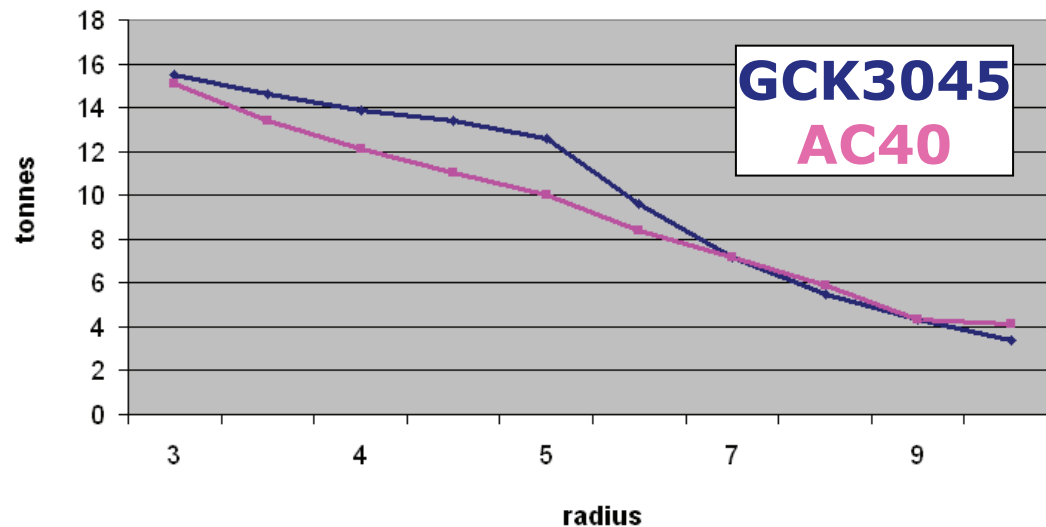
Versatility & power: 2 telescoping modes



**Very powerful
telescoping under
load capability**

Pick and Carry: Quantum leap in this class

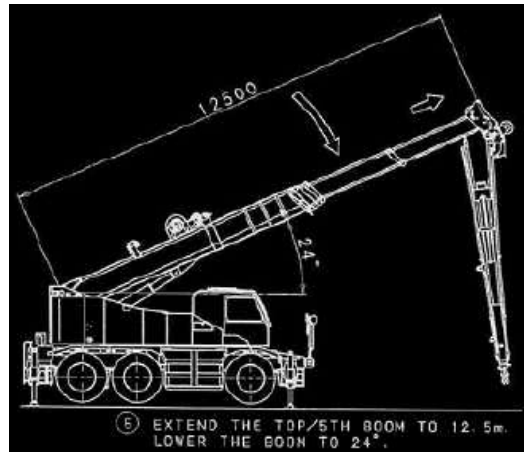
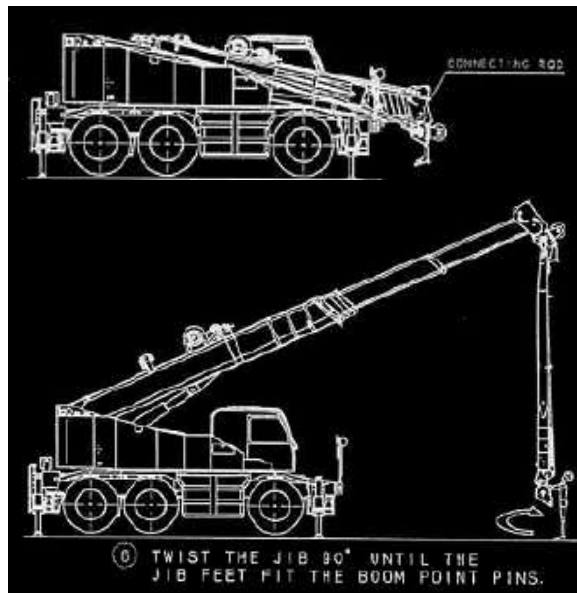
Excellent 'Pick & Carry' performance - over front & rear
(Demag AC40 City over rear only)



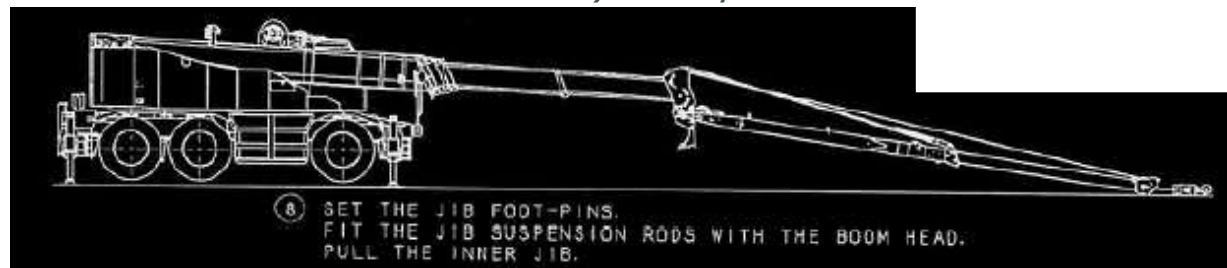
Overall pick & carry advantage: 11,6%
Extremely smooth at slow travel speeds

Twist jib: Easy rigging on congested jobsites

Twist jib format allows **rigging the jib within machine width**
Big advantage on congested jobsites



- 1) Transport width within 2,55m
- 2) Release jib and elevate boom
(stays within 2,55m width)
- 3) Twist jib to correct position and pin
(stays within 2,55 m width)
- 4) Lower boom whilst hoisting up jib
- 5) Attach pendants
- 6) Ready for work



Twist jib: Twist jib practice

Easy “**one man**” rigging of the twist jib.



Remote control handling.



Twisting of the jib for bolting in.



Single line headache ball.

Axle loading calculations

<25t Hook, Jib, 4t Ball Hook, Tool Box (Opt), Heavy Duty Jib>

1st Axle	2nd Axle	3rd Axle	Total Weight
11.976	11.988	11.856	35.820

Multi flexibility on axle loads within 36t GVW.

<25t Hook, **without** Jib>

1st Axle	2nd Axle	3rd Axle	Total Weight
11.672	11.629	11.492	34.793

<25t Hook, Jib, 4t Ball Hook, Tool Box (Opt), **without** Heavy Duty Jib>

1st Axle	2nd Axle	3rd Axle	Total Weight
12.074	11.848	11.714	35.636

<10t Hook, **without** Jib>

1st Axle	2nd Axle	3rd Axle	Total Weight
11.598	11.641	11.504	34.743

<10t Hook, Jib, 4t Ball Hook, Tool Box (Opt), Heavy Duty Jib>

1st Axle	2nd Axle	3rd Axle	Total Weight
11.923	11.969	11.836	35.728

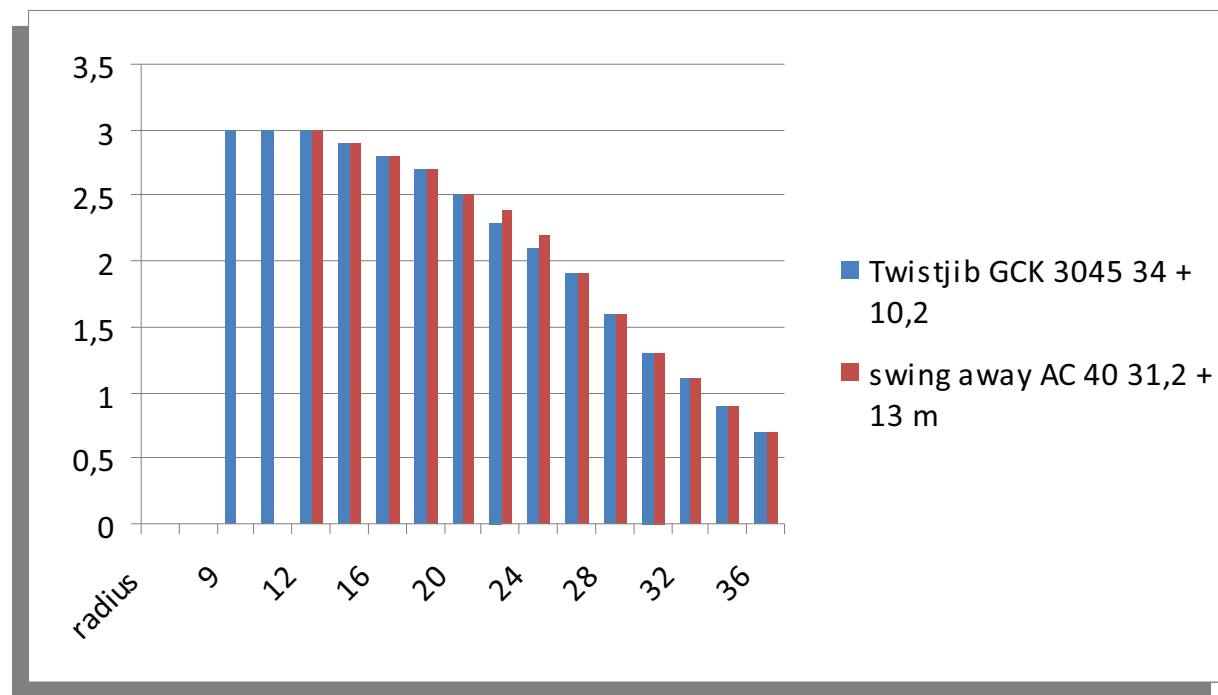
<10t Hook, Jib, 4t Ball Hook, Tool Box (Opt), **without** Heavy Duty Jib>

1st Axle	2nd Axle	3rd Axle	Total Weight
12.00	11.860	11.726	35.586

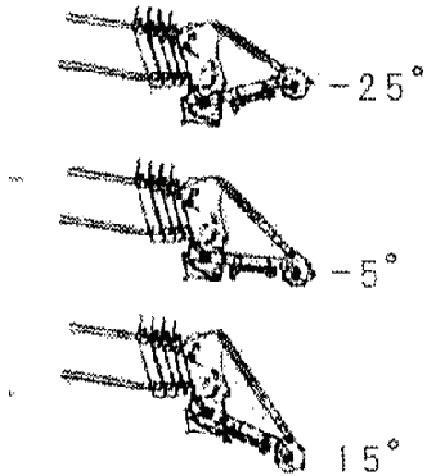
Twist jib: Competitive loadcharts

GCK3045 34m + 6,3/10,2 m (offsets 5°, 25°, 45°)
City AC40 31.2m+ 7,1/13 m swingaway (offsets 0°, 30°)

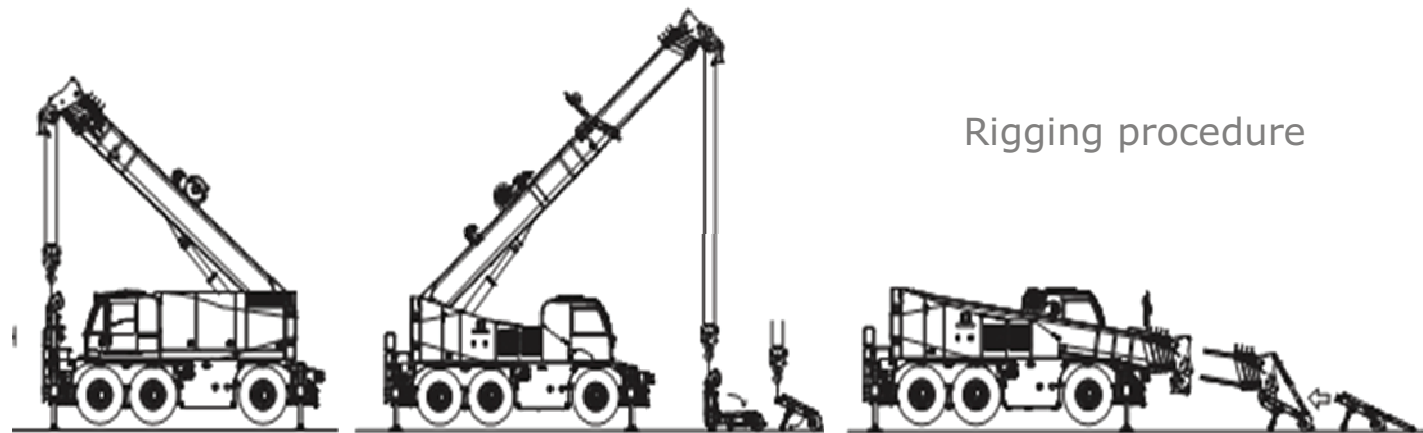
Total length and loadcharts comparable



Heavy duty runner: Requires less headroom



- ▶ Ideal for indoor operations
- ▶ Used with hookblock or searcher hook
- ▶ 3 offset positions
- ▶ 15 T capacity



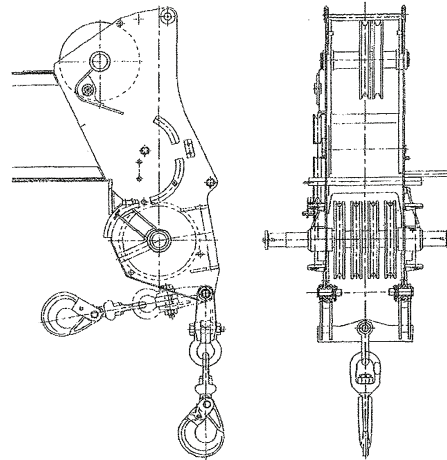
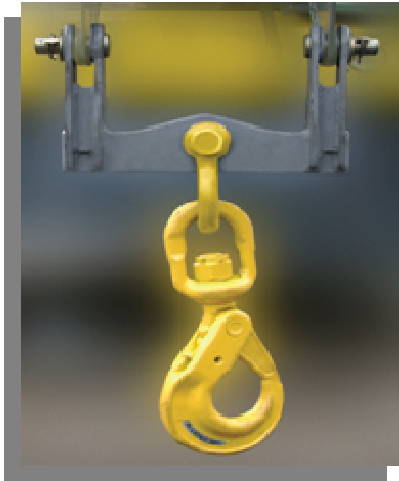
Rigging procedure

13 GCK3045

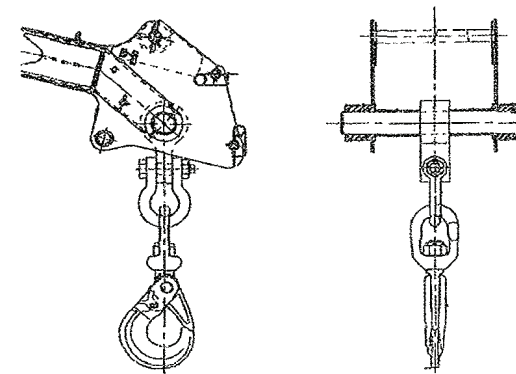
Grove Manitowoc National Crane Potain



Searcher hook: Requires less headroom



Main Boom

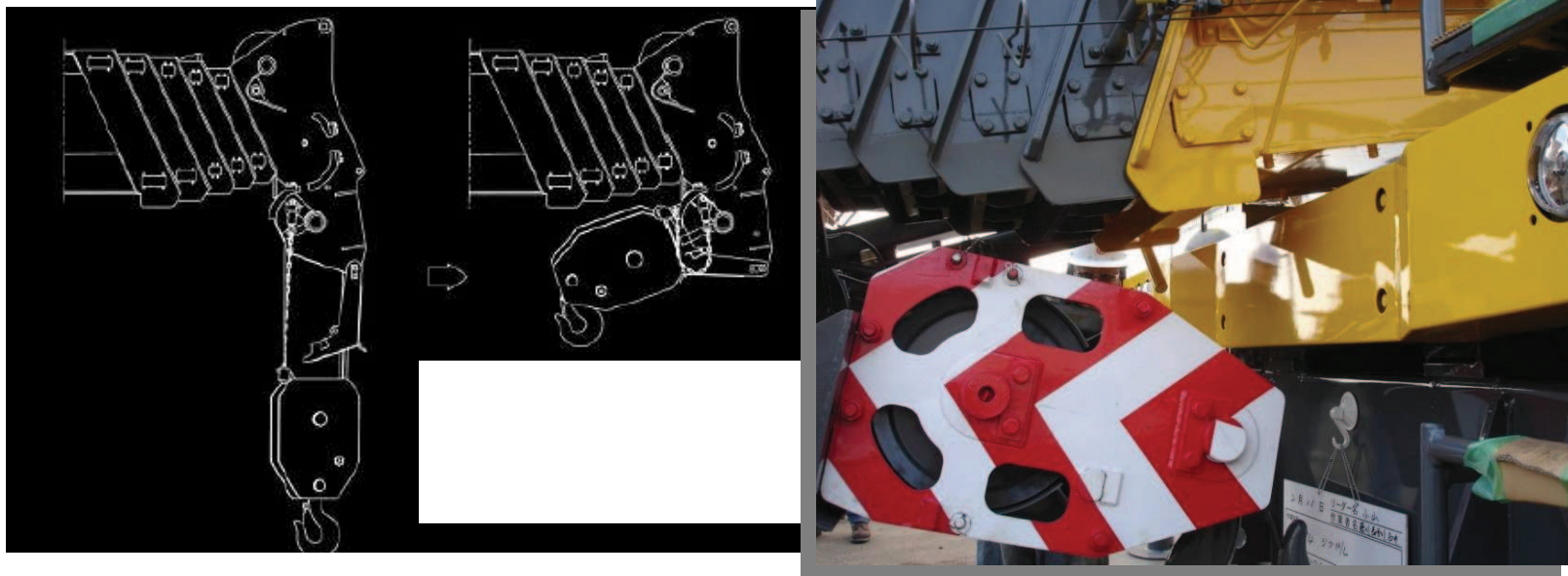


Heavy Duty Runner

- ▶ Less headroom required
- ▶ Allows access to tight spaces
- ▶ Fixes to main boom or HD runner
- ▶ 12.5t capacity

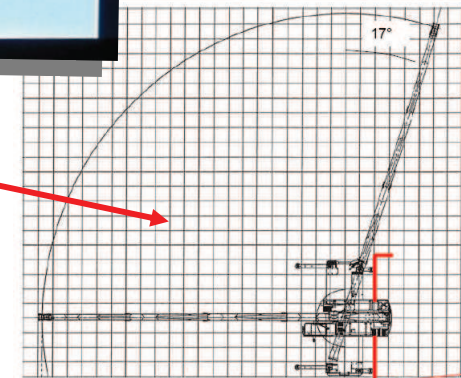
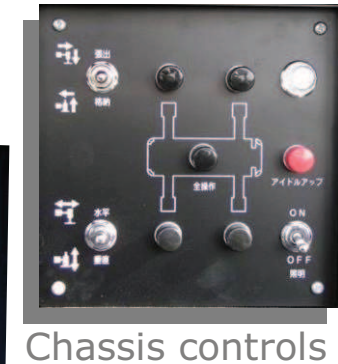
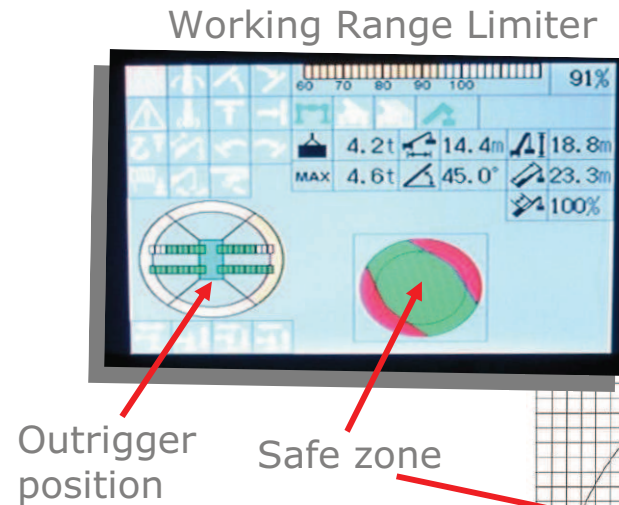
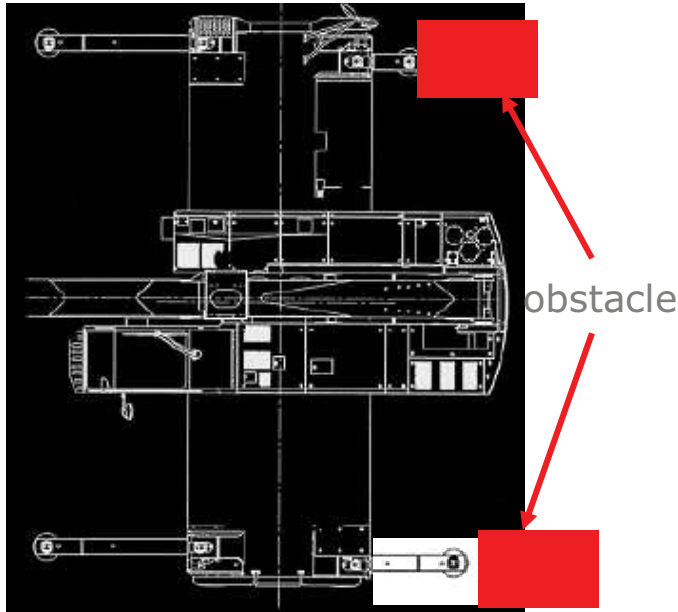
Self-stowing hookblock: Quick and convenient

No need to fix hookblock to front bumper



Easy handling and preparation for travel mode

Staggered outriggers: Work around obstacles



- ▶ Working with outriggers in different (staggered) positions possible
- ▶ LMI automatically limits slewing range to compensate
- ▶ Load capacities automatically adjusted
- ▶ Increased versatility and safety feature

Cab: Ergonomic and operator friendly



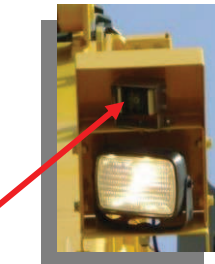
- ▶ Easy access with powered retractable platform
- ▶ Automotive style dashboard
- ▶ Air conditioning standard

Cab: Ergonomic and operator friendly

Rear view and hoist cameras



Graphic LMI with Working Range Limiter



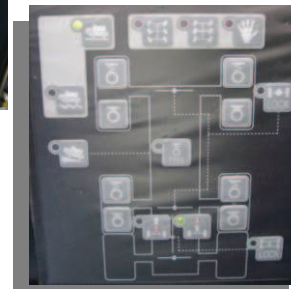
Hoist camera & light



Automotive dashboard



Outrigger controls



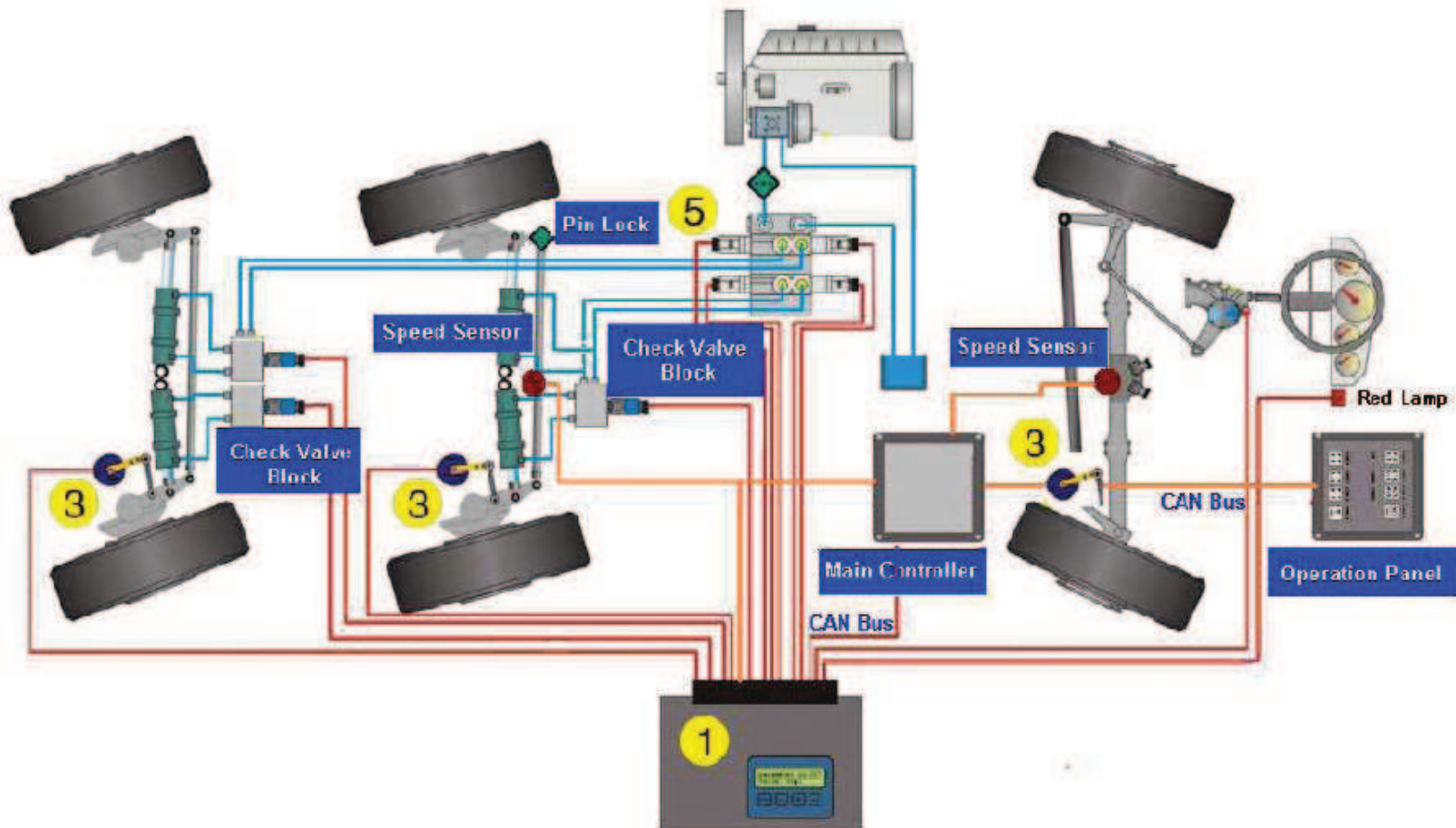
Drive / Steer Controls



A/C controls

Speaker mic

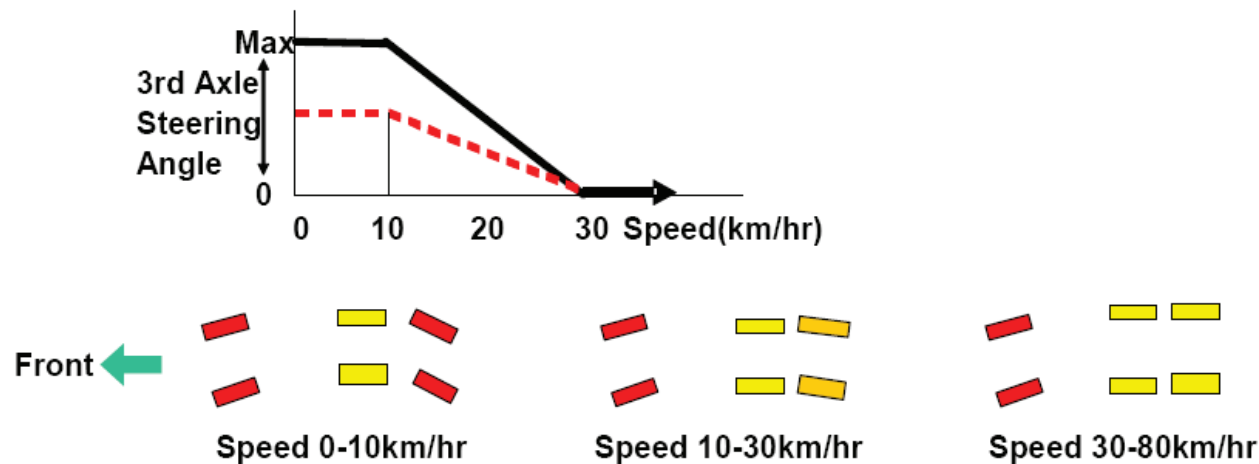
Steer by wire: Optimised steering



Steer by wire: Tyre wear reduction

3rd axle is automatically adjusted by detecting the 1st axle steering angle

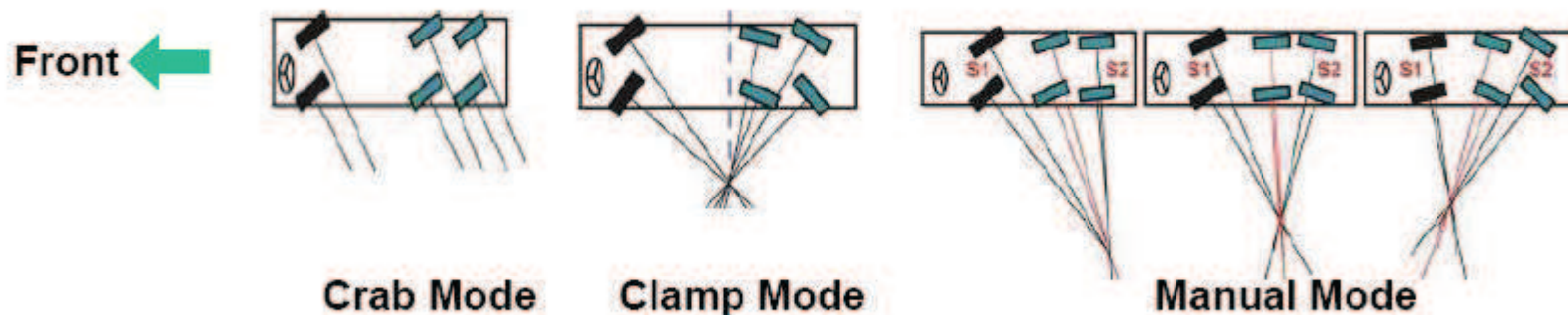
- 1) 0-10 km/hr : Steering angle 3rd axle adjusted to maintain correct angle
- 2) 10-30 km/hr : Steering angle 3rd axle is gradually reduced as speed increases
- 3) 30-80 km/hr : Steering angle 3rd axle is locked and the control is cut-off



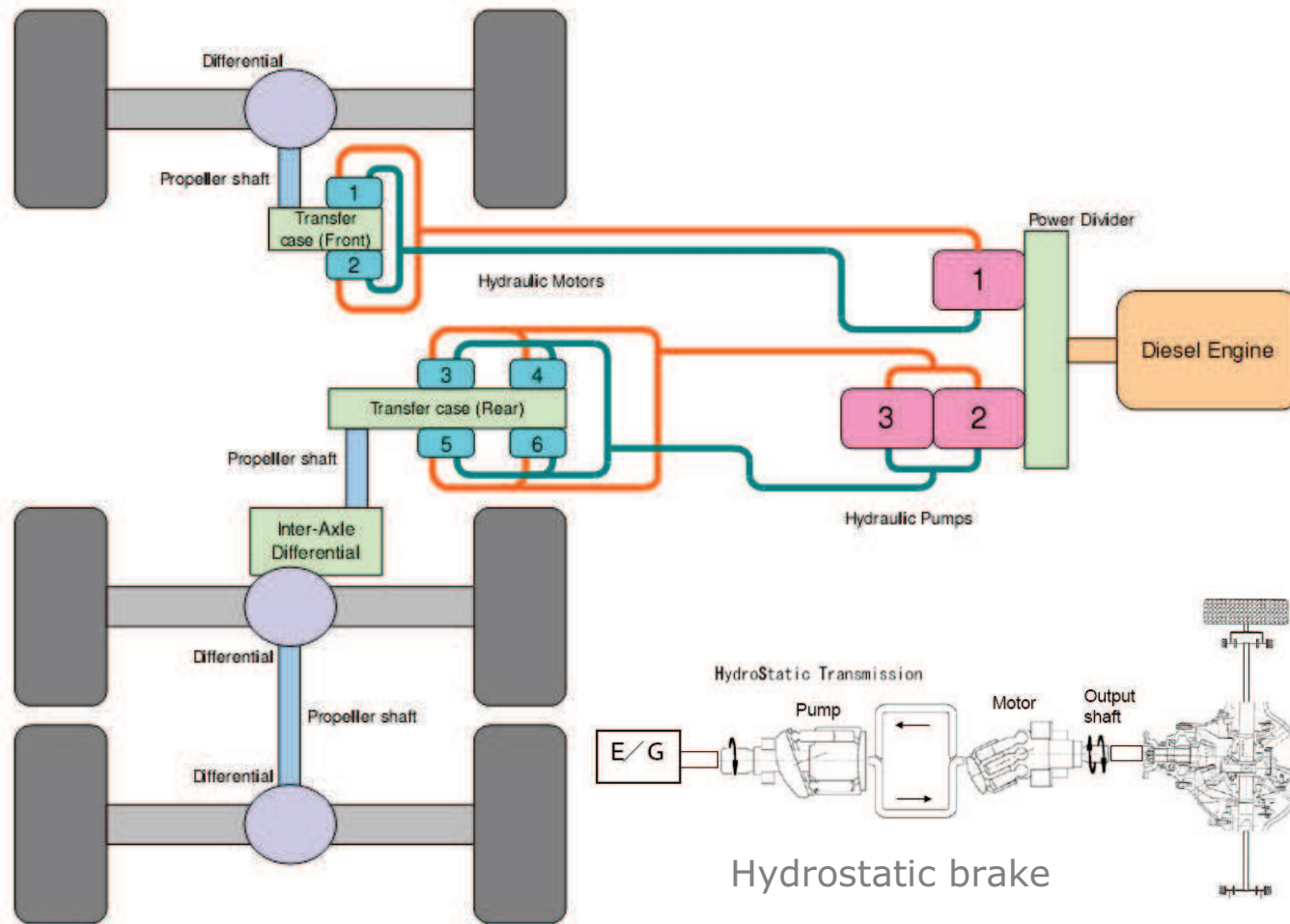
Off-road steering: Ultimate control

Crab/Coordinated Steering: 1st Axle, manually steered, 2nd & 3rd axle automatically steered.

Manual Steering : 1st Axle, manually steered, with 3rd axle switch steered and the 2nd axle automatically steered in order to maintain the centre and to prevent wear and tear of tire.



Hydrostatic (HST) Drive: Smooth and efficient



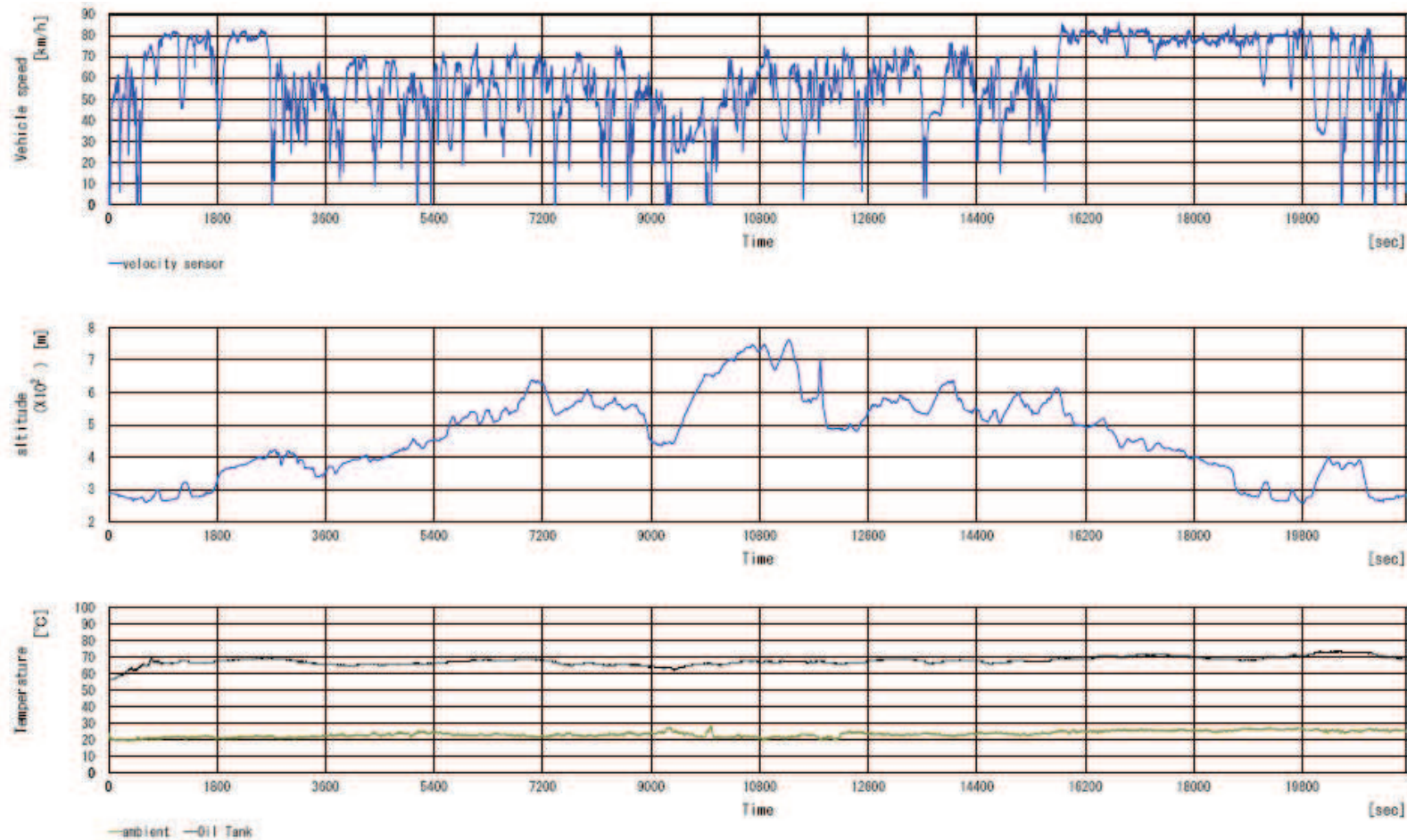
- ▶ Smooth acceleration
- ▶ Very smooth on-site
- ▶ Efficient braking
- ▶ Less wear and tear
- ▶ Engine in super
- ▶ Saves weight



Hino E13C - 6cyl 330kw
(EUROMOT III)



Extensive Testing: 20,000 km road test



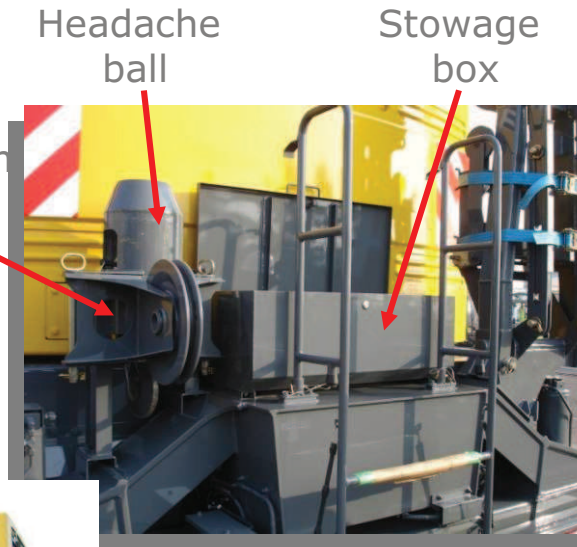
Serviceability: Accessories and access



Fuel filler access



Hydraulics access



Aux boom nose

Headache ball

Stowage box

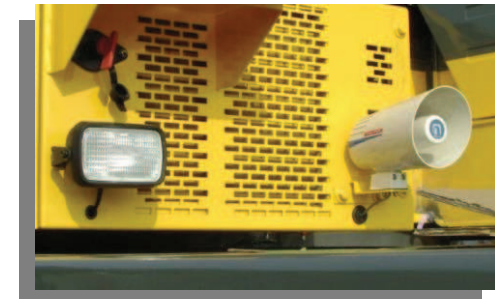
Rear access



Battery access



Stowage box



Loud speaker & spotlight



Fuse access



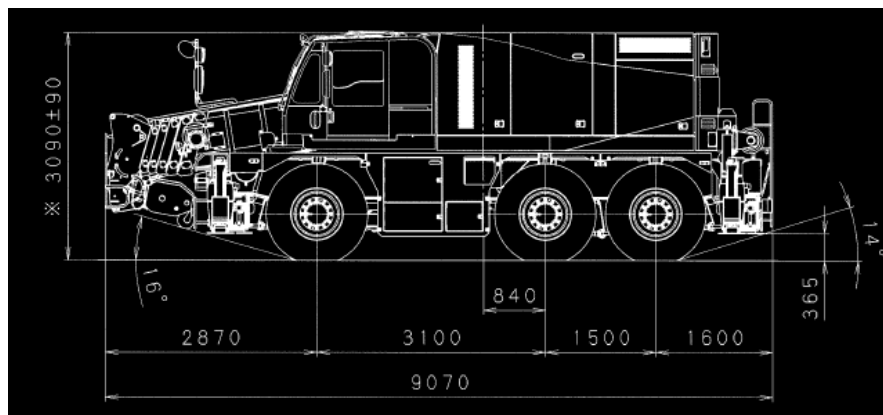
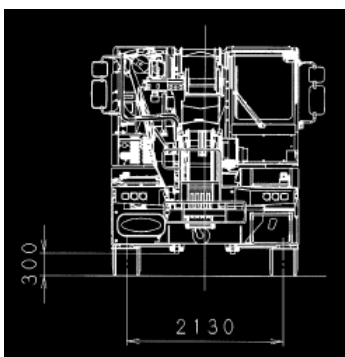
Grove Maniowoc National Crane Potain

Extra stowage: Rear box



Stowage compartment with lockable cover, approx. 200 mm deep.
Easy connection to chains for lifting off possible.

Specification summary



Standard unit including Jib, HDJ and 25t Hook

1st Axle	2nd Axle	3rd Axle	GVW
12 t	12 t	11,9 t	35,9 t

Superstructure:

- ▶ 34m 6 section main boom
- ▶ 6.3 /10.2m Twist Jib (offsets 5°, 25°, 45°)
- ▶ Graphic LMI with Working Range Limiter
- ▶ Mechanical swing lock (front and rear)
- ▶ Single line pull 44,4 KN
- ▶ Rope diameter 16 mm (rope length 160 m)
- ▶ HINO E13C 6 cylinder Euromot IIIA (330kW)
- ▶ 400 litre fuel tank

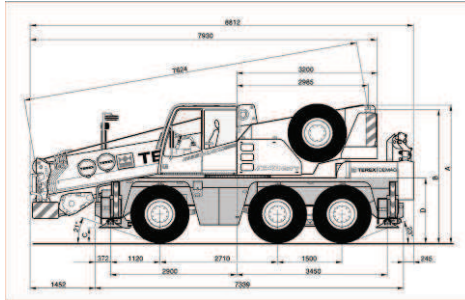
Carrier

- ▶ Hydrostatic drive (HST)
- ▶ 6x6x6
- ▶ Hydro-pneumatic suspension
- ▶ On-road steer 6x4; Off road 6x6
- ▶ Tyres: Bridgestone or Yokohama 385/95 R25
- ▶ ABS brakes: (Retardation under HST system)
- ▶ Outriggers: Staggered, vertical stroke 550 mm

Performance

- ▶ Max. Travel speed: 80 km/h
- ▶ Gradeability: 50% in low gear

Competition: Terex-Demag City AC40



Demag AC40 City

- ▶ Direct competitor in this class
- ▶ Conventional drive line

- ▶ GCK3045 stronger loadcharts

overall **>5%** pick&carry **>11%**

- ▶ GCK3045 longer boom

+ 2,8 m

- ▶ GCK3045 better turning radius / outrigger options

-2m o. jib/Staggered outriggers

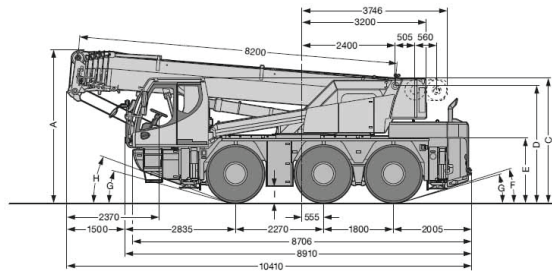
- ▶ GCK3045 better manoeuvrability on jobsite thru hydrostatic drive

HST Retarder

- ▶ GCK3045 longer lifecycle of tyres

Active Steering

Competition: Liebherr LTC1045-3.1



Liebherr LTC 1045-3.1

- ▶ Direct competitor in this class
- ▶ Conventional drive line

- ▶ GCK3045 with better pricing

**approx 40-80 k€
more expensive**

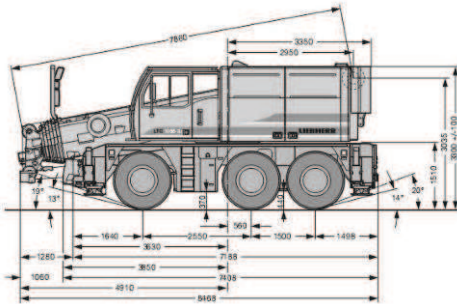
- ▶ GCK3045 with better dimensions

**length 10410 mm vs. 9070 mm
turning radius 10025 vs. 8330 mm
allwheel steer 7820 vs 6870 mm**

- ▶ GCK offers full package

**Self stowing hook block
odd outrigger loadcharts
6 x 6 as standard
HST braking system**

Competition: Liebherr LTC1055



Liebherr LTC 1055-3.1

- ▶ Not a direct competitor - larger capacity class
- ▶ hydrostatic drive

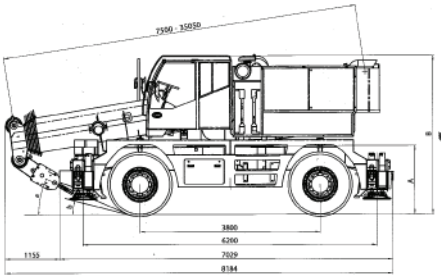
- ▶ GCK3045 with better ROI

**No additional costs for
counterweight transport**

- ▶ GCK3045 proven hydrostatic technology

**thru experienced
manufacturing partner**

Competition: Locatelli ATC40



Locatelli ATC40

- ▶ Not a direct competitor - 2 axle carrier (GVW 24 t)
- ▶ Hydrostatic drive

- ▶ GCK3045 better ROI

**No additional costs for
counterweight transport**

- ▶ GCK3045 much stronger loadcharts

overall >30%

Benefit summary

- ▶ Strongest loadcharts and longest boom in class
- ▶ Very compact: tightest turning circle in class
- ▶ No additional counterweight required: all within 12T per axle
- ▶ 2 telescoping modes: fast telescoping and telescoping under load
- ▶ Pick & carry: strong load charts, over front capability, smooth travel
- ▶ Twist jib: offers more angles, easy to rig on narrow jobsites
- ▶ Self stowing hookblock: quick and convenient
- ▶ Staggered outriggers: work around obstacles
- ▶ Cab: ergonomic and operator friendly – packed with features
- ▶ Steer by wire: optimised steering with reduced tyre wear
- ▶ Hydrostatic drive (HST): smooth acceleration and efficient braking