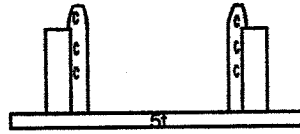
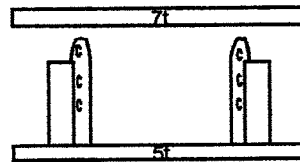


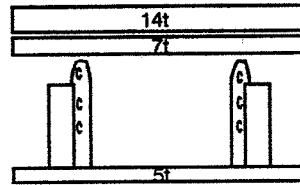
8.1.3 Counterweight versions



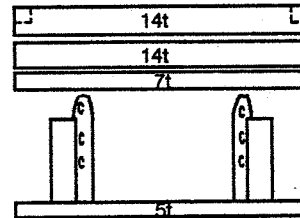
5 t (11,023 lbs)



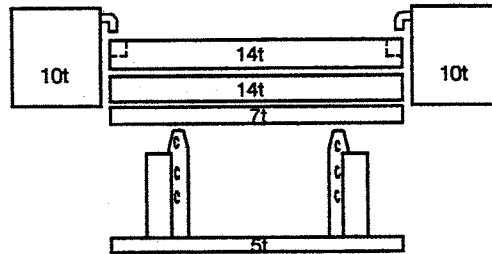
12 t (24,460 lbs)



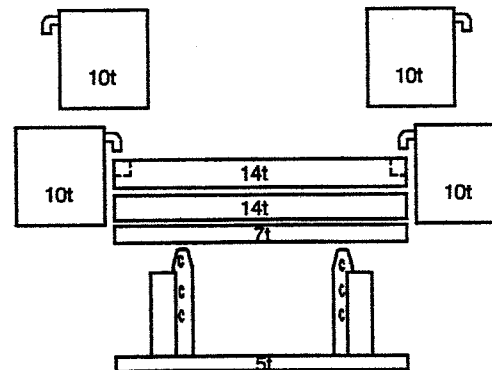
26 t (57,320 lbs)



40 t (88,180 lbs)



60 t (132,280 lbs)

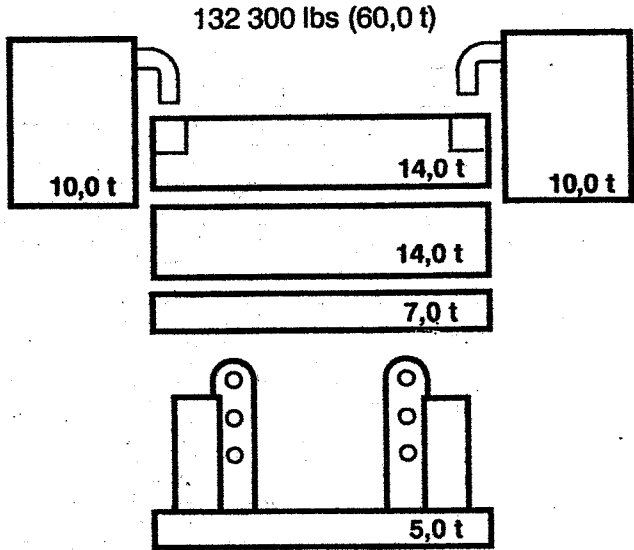
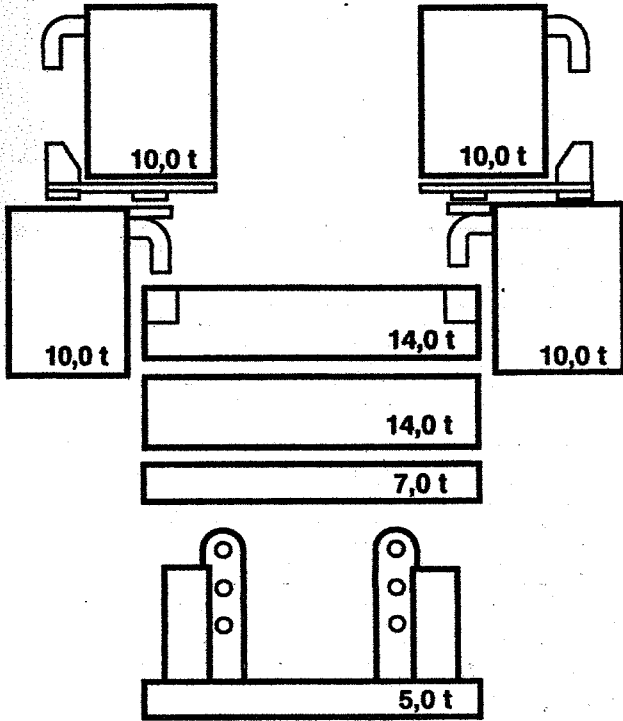


80 t (176,370 lbs)

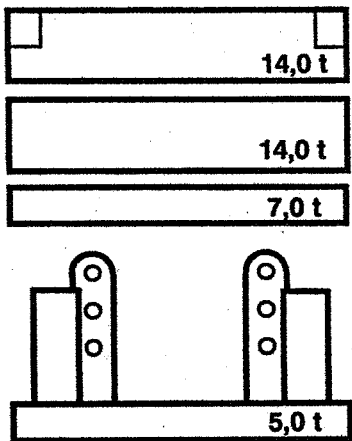
A05371

06.05.1996

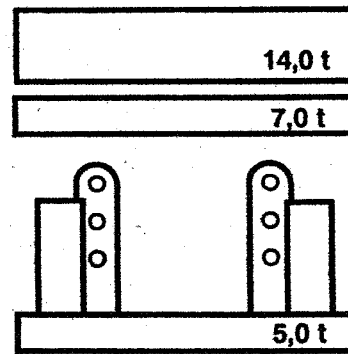
Permitted counterweight versions:
176 400 lbs (80,0 t)



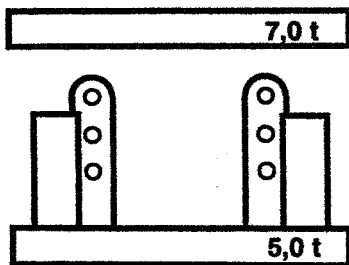
88 200 lbs (40,0 t)



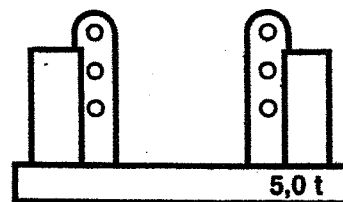
57 300 lbs (26,0 t)



26460 lbs (12,0 t)

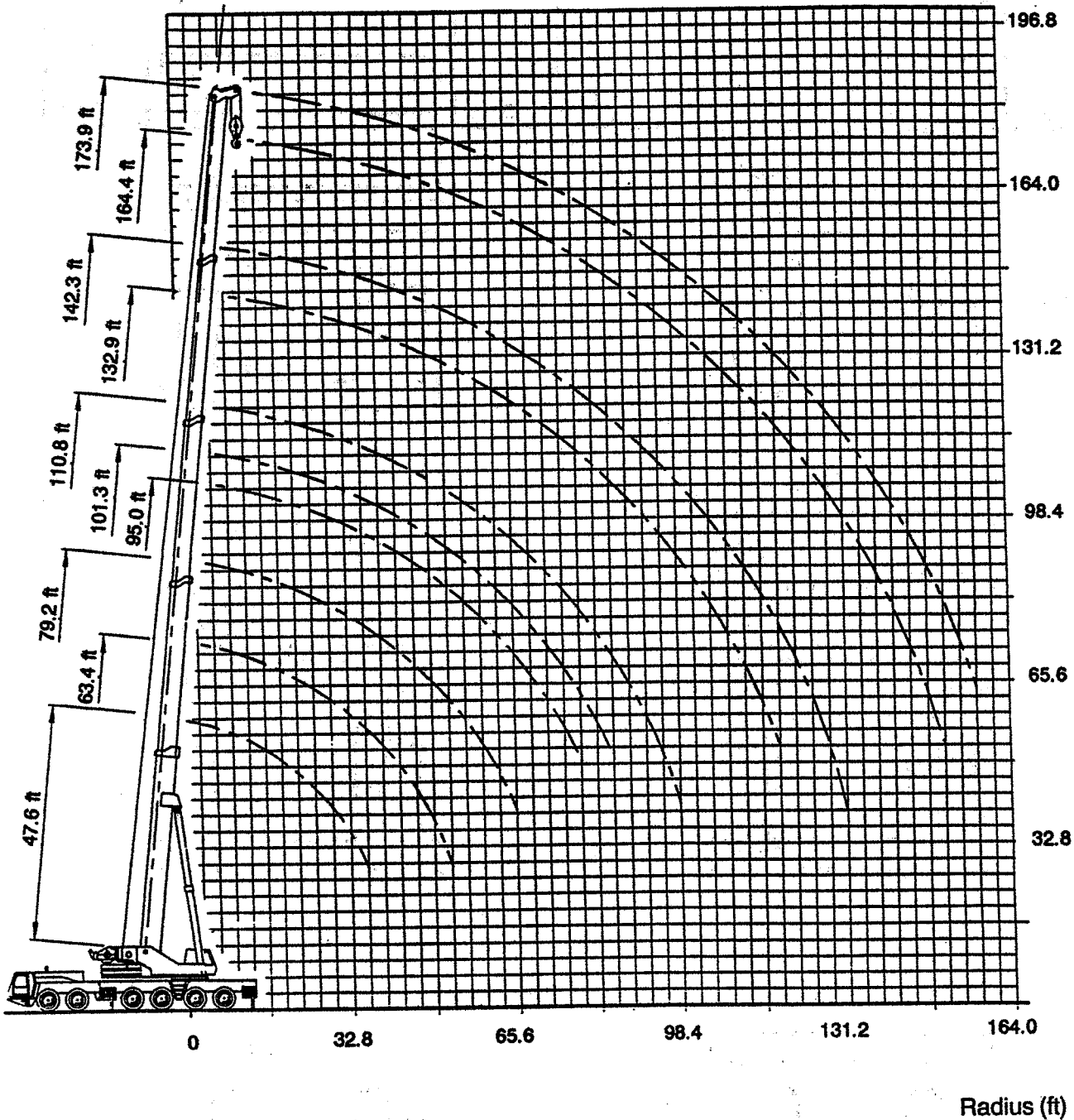
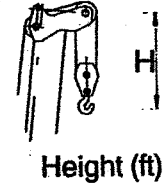


11 000 lbs (5,0 t)



Working range - main boom

Hook blocks					
Lifting capacity in lbs	308 700	220 500	138 900D	138 900E	66 150
Distance H in ft	12.5	11.2	11.0	11.3	10.2

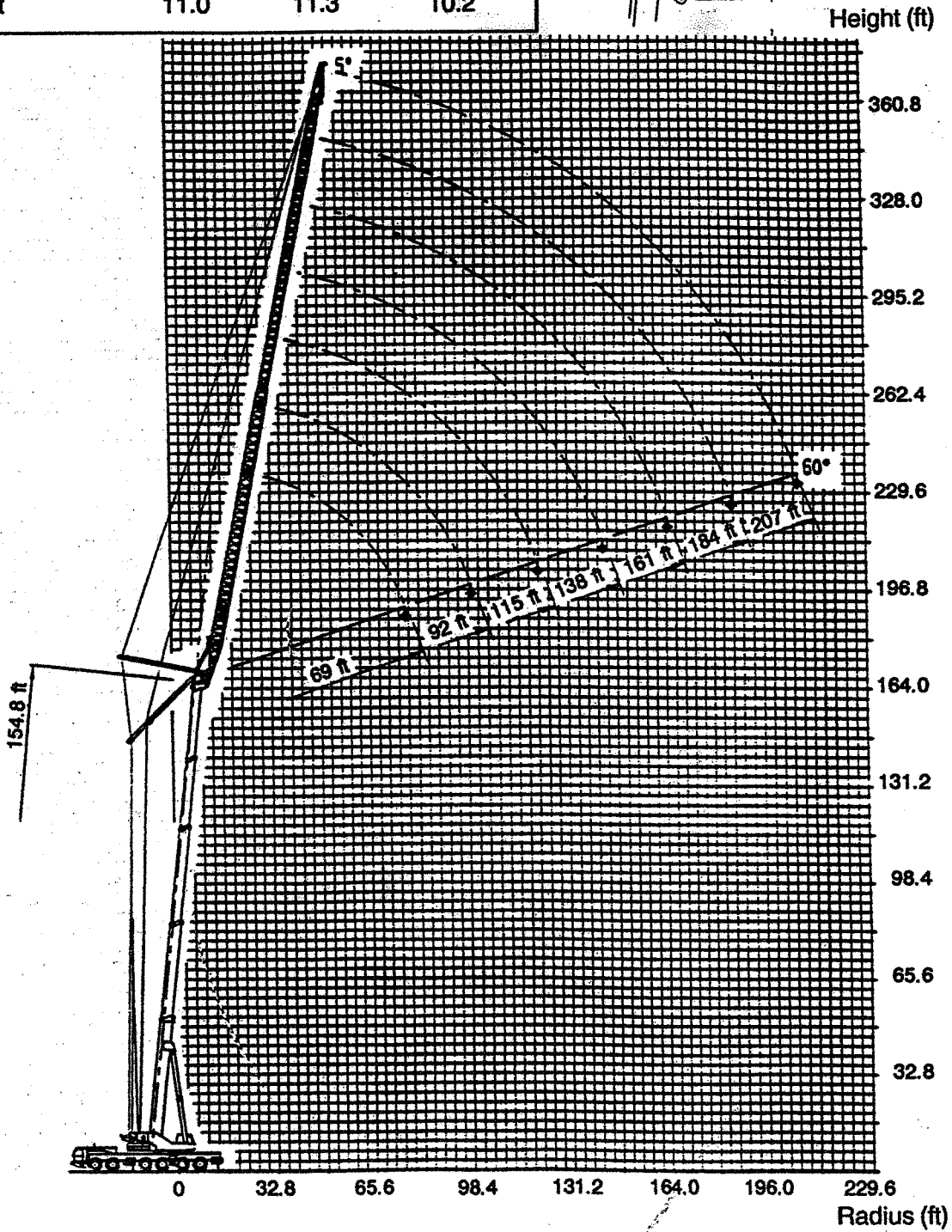


These height curves are only valid in conjunction with the radii listed in the lifting capacity tables.

The sheaves and hook heights are calculated theoretically. The actual values deviate from these values due to the flexion of the boom, depending on the load.

Working range - main boom with luffing fly jib, position of the main boom 84°

Hook blocks			
Lifting capacity in lbs	138 900D	138 900E	66 150
Distance H in ft	11.0	11.3	10.2



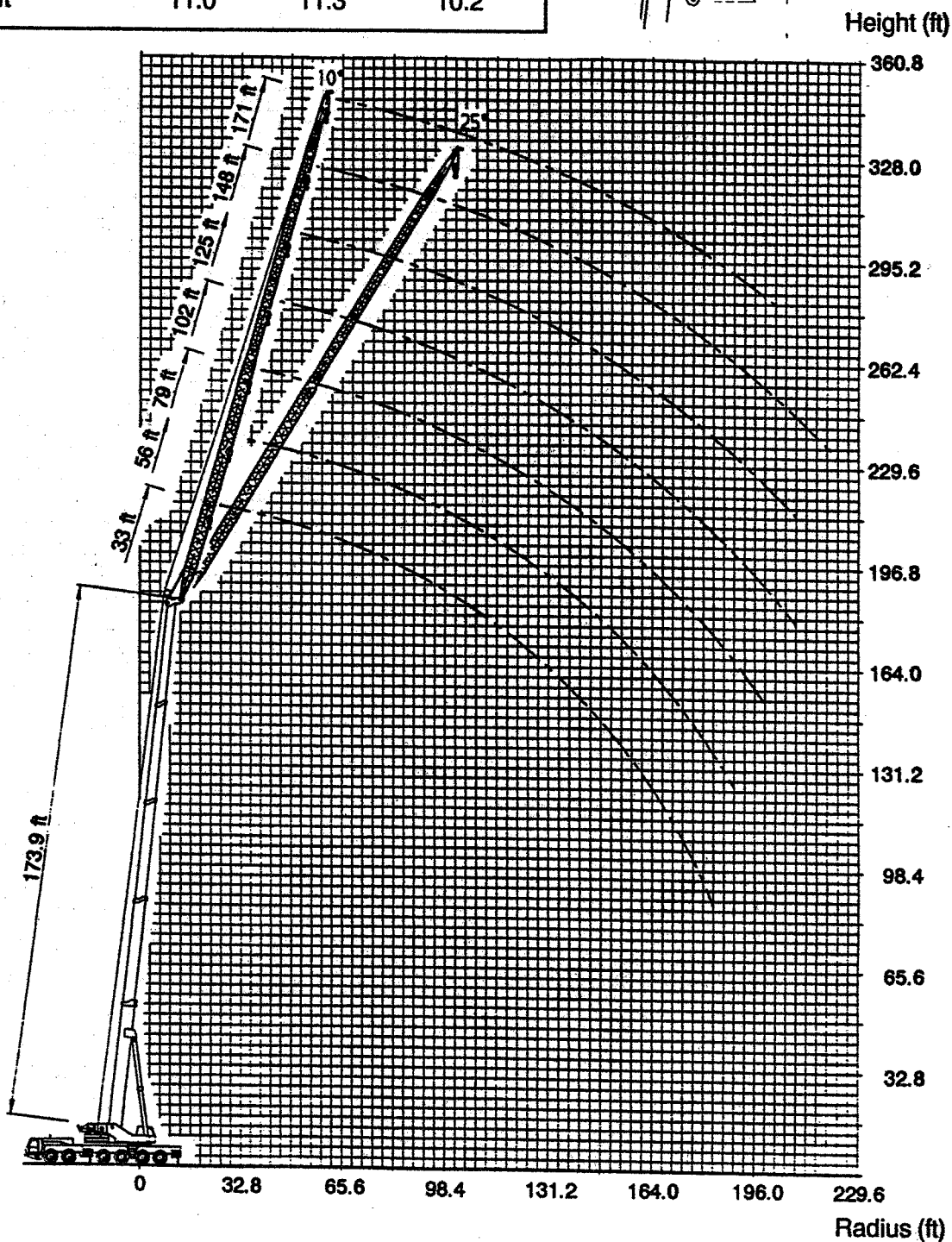
These height curves are only valid in conjunction with the radii listed in the lifting capacity tables.

The sheaves and hook heights are calculated theoretically. The actual values deviate from these values due to the flexion of the boom, depending on the load.

Working range - main boom with boom extension

Hook blocks

Lifting capacity in lbs	138 900D	138 900E	66 150
Distance H in ft	11.0	11.3	10.2

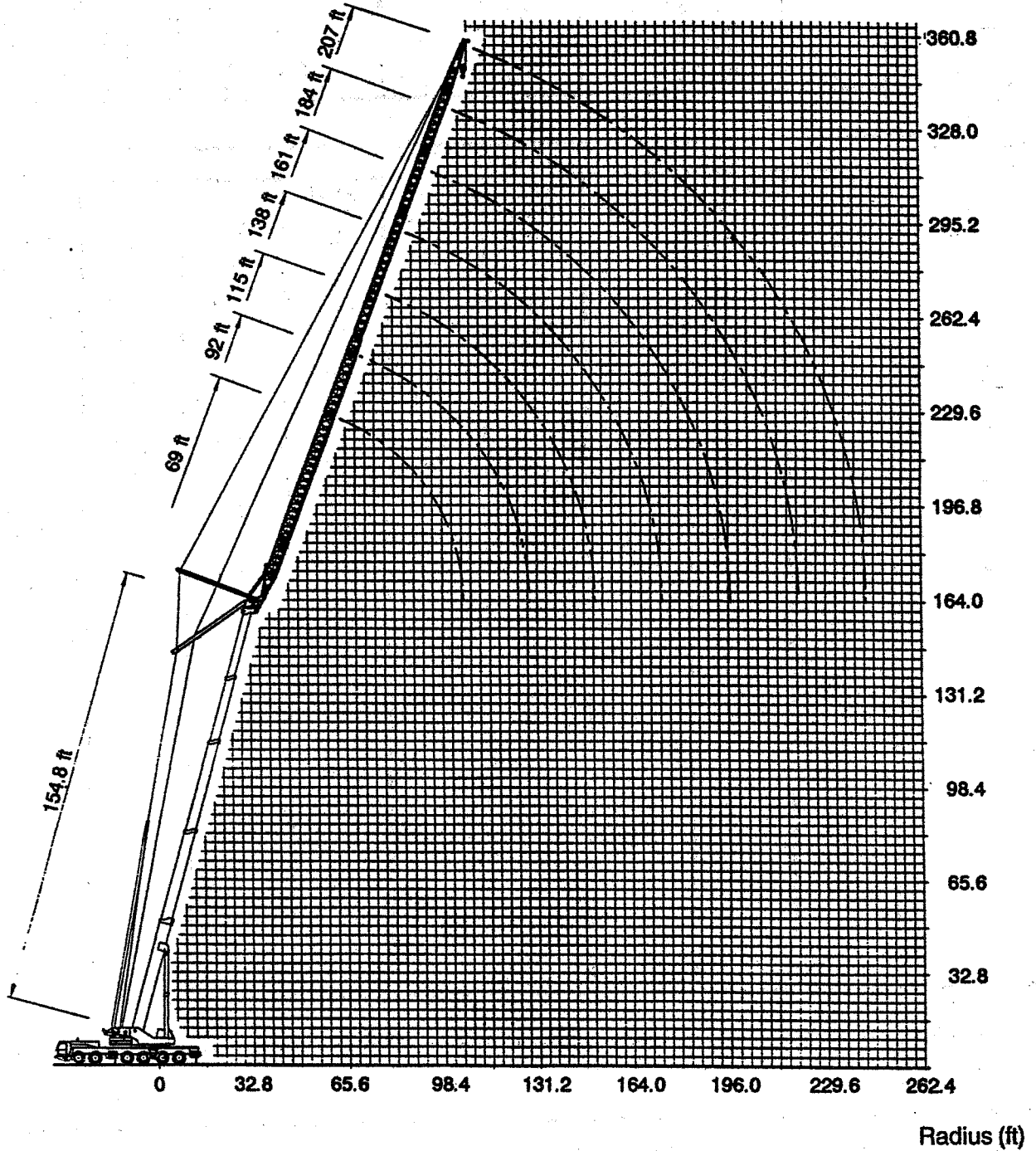
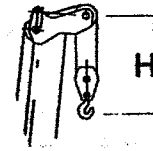


These height curves are only valid in conjunction with the radii listed in the lifting capacity tables.

The sheaves and hook heights are calculated theoretically. The actual values deviate from these values due to the flexion of the boom, depending on the load.

Working range - main boom with luffing fly jib, position of the main boom 75°

Hook blocks			
Lifting capacity in lbs	138 900D	138 900E	66 150
Distance H in ft	11.0	11.3	10.2



These height curves are only valid in conjunction with the radii listed in the lifting capacity tables.

The sheaves and hook heights are calculated theoretically. The actual values deviate from these values due to the flexion of the boom, depending on the load.

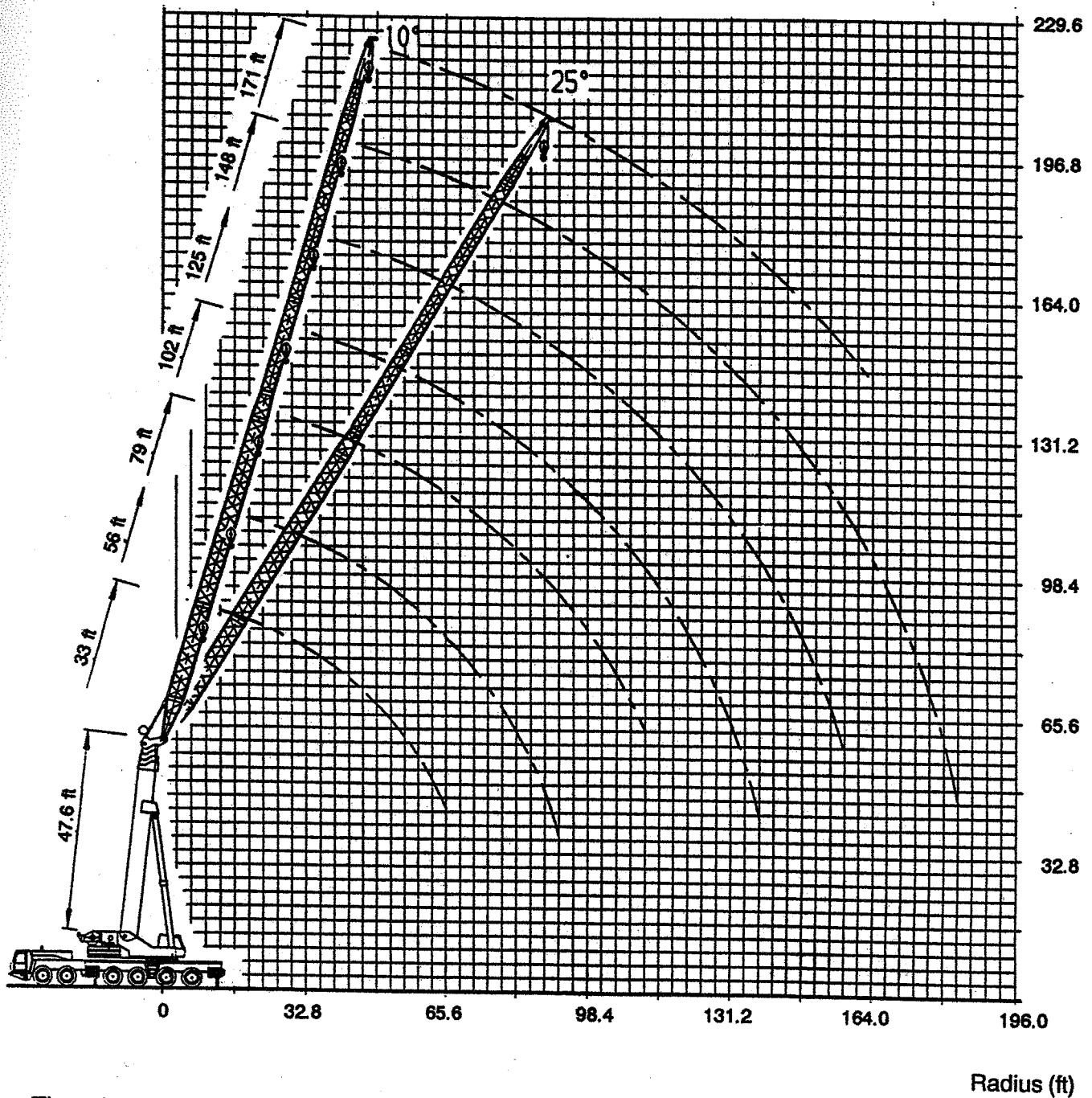
Working range - main boom with boom extension

Hook blocks

Lifting capacity in lbs	138 900D	138 900E	66 150
Distance H in ft	11.0	11.3	10.2



Height (ft)



These height curves are only valid in conjunction with the radii listed in the lifting capacity tables.

The sheaves and hook heights are calculated theoretically. The actual values deviate from these values due to the flexion of the boom, depending on the load.

2 295 232 / 5 233 / 5 238

2 295 262 / 5 263 / 5 268

Crane with 176 400 lbs (80,0 t) counterweight (supporting span 28.4 x 20.7 ft)										
Main boom - fixed lengths in ft										
	47.6	47.6	63.4	79.2	79.2	79.2	95.0	101.3	101.3	110.8
Tel. sec. I	0.0	0.0	0.5	0.5	0.0	0.0	1.0	0.0	0.0	1.0
Tel. sec. II	0.0	0.0	0.0	0.5	1.0	0.0	0.5	1.0	0.0	1.0
Tel. sec. III	0.0	0.0	0.0	0.0	0.0	1.0	0.0	0.7	1.0	0.0
Tel. sec. IV	0.0	0.0	0.0	0.0	0.0	0.0	0.0	0.0	0.7	0.0
Slewing range	to the rear	360°								
Radius in ft	Lifting capacities in 1000 lbs									
10.0	439.0	416.0	328.0	304.0	292.0	218.0	218.0			
15.0	365.0	324.0	320.0	304.0	254.0	184.0	218.0	182.0	136.0	186.0
20.0	302.0	260.0	258.0	258.0	219.0	155.0	208.0	162.0	115.0	165.0
25.0	242.0	218.0	215.0	215.0	191.0	134.0	184.0	142.0	100.0	154.0
30.0	199.0	185.0	182.0	183.0	169.0	118.0	164.0	126.0	88.0	140.0
35.0	165.0	161.0	157.0	158.0	151.0	105.0	147.0	113.0	79.0	127.0
40.0			133.0	133.0	136.0	96.0	132.0	101.0	71.0	115.0
45.0			109.0	110.0	113.0	86.0	109.0	92.0	64.0	103.0
50.0			92.0	93.0	95.0	79.0	92.0	84.0	58.0	91.0
55.0				79.0	82.0	72.0	78.0	77.0	54.0	78.0
60.0				68.0	71.0	66.0	67.0	71.0	49.0	67.0
65.0				59.0	62.0	62.0	58.0	65.0	46.0	58.0
70.0							51.0	58.0	42.2	50.0
75.0							44.0	51.0	39.4	43.8
80.0								46.0	37.4	38.4
85.0								40.8	35.2	33.6
90.0										29.4
95.0										25.8
SLI - Code	715		712							
Max. permitted wind speed	40 ft/s									

* Lifting capacities > 309 000 lbs require additional equipment

2. Main boom

2 295 230 / 5 231

2 295 260 / 5 261

	Crane with 176 400 lbs (80,0 t) counterweight (supporting span 28.4 x 28.2 ft)								
	Main boom - fixed lengths in ft								
	47.6	63.4	79.2	79.2	79.2	95.0	101.3	101.3	110.8
Tel. sec. I	0.0	0.5	0.5	0.0	0.0	1.0	0.0	0.0	1.0
Tel. sec. II	0.0	0.0	0.5	1.0	0.0	0.5	1.0	0.0	1.0
Tel. sec. III	0.0	0.0	0.0	0.0	1.0	0.0	0.7	1.0	0.0
Tel. sec. IV	0.0	0.0	0.0	0.0	0.0	0.0	0.0	0.7	0.0
Slewing range	360°								
Radius in ft	Lifting capacities in 1000 lbs								
10.0	396.0	328.0	304.0	292.0	218.0	218.0			
15.0	314.0	312.0	304.0	254.0	184.0	218.0	182.0	136.0	186.0
20.0	256.0	254.0	254.0	219.0	155.0	208.0	162.0	115.0	165.0
25.0	217.0	214.0	214.0	191.0	134.0	184.0	142.0	100.0	154.0
30.0	186.0	183.0	183.0	169.0	118.0	164.0	126.0	88.0	140.0
35.0	162.0	159.0	159.0	151.0	105.0	147.0	113.0	79.0	127.0
40.0		139.0	140.0	136.0	96.0	134.0	101.0	71.0	115.0
45.0		124.0	124.0	124.0	86.0	120.0	92.0	64.0	103.0
50.0		107.0	108.0	110.0	79.0	107.0	84.0	58.0	95.0
55.0			95.0	97.0	72.0	94.0	77.0	54.0	87.0
60.0			84.0	86.0	66.0	83.0	71.0	49.0	79.0
65.0			75.0	77.0	62.0	74.0	66.0	46.0	73.0
70.0						66.0	61.0	42.2	66.0
75.0						59.0	57.0	39.4	59.0
80.0							54.0	37.4	53.0
85.0							51.0	35.2	48.0
90.0									43.2
95.0									38.6
SLI - Code	710								
Max. permitted windspeed	40 ft/s								

* Lifting capacities > 309 000 lbs require additional equipment

2 295 230 / 5 231

2 295 260 / 5 261

Crane with 176 400 lbs (80,0 t) counterweight (supporting span 28.4 x 28.2 ft)								
Main boom - fixed lengths in ft								
	110.8	110.8	132.9	132.9	142.3	142.3	164.4	173.9
Tel. sec. I	0.0	0.0	1.0	0.0	1.0	0.0	1.0	1.0
Tel. sec. II	1.0	0.0	1.0	1.0	1.0	1.0	1.0	1.0
Tel. sec. III	1.0	1.0	0.7	1.0	1.0	1.0	1.0	1.0
Tel. sec. IV	0.0	1.0	0.0	0.7	0.0	1.0	0.7	1.0
Slewing range	360°							
Radius in ft	Lifting capacities in 1000 lbs							
15.0	156.0	123.0						
20.0	145.0	106.0	116.0	112.0	99.0	95.0	75.0	
25.0	130.0	92.0	116.0	108.0	99.0	95.0	75.0	65.0
30.0	115.0	81.0	115.0	99.0	99.0	89.0	75.0	65.0
35.0	103.0	73.0	107.0	90.0	99.0	83.0	75.0	65.0
40.0	93.0	66.0	98.0	82.0	92.0	76.0	75.0	65.0
45.0	84.0	59.0	89.0	75.0	84.0	70.0	72.0	65.0
50.0	77.0	54.0	82.0	68.0	78.0	64.0	70.0	65.0
55.0	71.0	49.0	75.0	63.0	72.0	60.0	65.0	63.0
60.0	65.0	45.0	69.0	58.0	66.0	56.0	60.0	59.0
65.0	60.0	41.6	64.0	54.0	61.0	52.0	56.0	56.0
70.0	56.0	38.6	59.0	50.0	56.0	48.0	52.0	52.0
75.0	53.0	36.2	55.0	47.0	53.0	45.0	48.0	49.0
80.0	49.0	34.4	52.0	43.4	49.0	42.0	45.0	46.0
85.0	46.0	32.4	48.0	40.8	46.0	39.4	41.8	43.2
90.0	43.0	30.4	45.0	38.4	43.0	37.2	39.4	40.4
95.0	40.6	28.6	41.4	36.2	39.8	35.0	36.8	37.6
100.0			37.4	34.4	37.2	33.0	34.4	35.2
105.0			33.8	32.6	34.6	31.4	32.6	33.6
110.0			30.6	31.0	31.4	30.0	30.6	31.8
115.0			27.6	29.2	28.4	28.4	28.6	30.2
120.0					25.8	26.8	26.8	28.6
125.0					23.4	25.2	25.0	26.8
130.0					18.0	23.6	23.2	25.2
135.0							21.8	23.6
140.0							20.8	21.6
145.0							19.0	19.8
150.0							17.2	18.2
155.0								16.8
SLI - Code	710							
Max. permitted windspeed	40 ft/s		30 ft/s					

2 295 246

2 295 276

Crane with 176 400 lbs (80,0 t) Counterweight (Stützbasis 28.4 x 28.2 ft)									
Length of boom extension 171 ft									
Angle of boom extension 10°									
Main boom - fixed lengths in ft									
	47.6	63.4	79.2	95.0	110.8	132.9	142.3	164.4	173.9
Tel. sec. I	0.0	0.5	0.5	1.0	1.0	1.0	1.0	1.0	1.0
Tel. sec. II	0.0	0.0	0.5	0.5	1.0	1.0	1.0	1.0	1.0
Tel. sec. III	0.0	0.0	0.0	0.0	0.0	0.7	1.0	1.0	1.0
Tel. sec. IV	0.0	0.0	0.0	0.0	0.0	0.0	0.0	0.7	1.0
Slewing range	360°								
Radius in ft	Lifting capacities in 1000 lbs								
60.0	11.8								
65.0	11.0								
70.0	10.2	10.4	10.6	10.6					
75.0	9.4	9.6	9.8	10.0	9.8	8.6			
80.0	8.6	9.0	9.2	9.4	9.4	8.4	7.6		
85.0	8.0	8.4	8.6	8.8	8.8	8.0	7.4		
90.0	7.4	7.8	8.0	8.2	8.4	7.8	7.2		
95.0	6.8	7.2	7.6	7.8	7.8	7.6	7.0	5.6	5.0
100.0	6.4	6.8	7.0	7.2	7.4	7.4	6.8	5.4	5.0
105.0	6.0	6.2	6.6	6.8	7.0	7.2	6.6	5.4	4.8
110.0	5.4	5.8	6.2	6.4	6.6	6.8	6.6	5.2	4.8
115.0	5.0	5.4	5.8	6.0	6.2	6.4	6.4	5.2	4.6
120.0	4.8	5.2	5.4	5.8	6.0	6.2	6.2	5.0	4.6
125.0	4.4	4.8	5.2	5.4	5.6	5.8	5.8	5.0	4.6
130.0	4.0	4.4	4.8	5.0	5.2	5.6	5.6	4.8	4.4
135.0	3.8	4.2	4.4	4.8	5.0	5.2	5.2	4.8	4.4
140.0	3.4	3.8	4.2	4.4	4.8	5.0	5.0	4.8	4.4
145.0	3.2	3.6	4.0	4.2	4.4	4.8	4.8	4.6	4.2
150.0	3.0	3.4	3.6	4.0	4.2	4.4	4.4	4.4	4.2
155.0	2.6	3.0	3.4	3.6	3.8	4.2	4.2	4.2	4.0
160.0	2.4	2.8	3.2	3.4	3.6	3.8	4.0	3.8	3.8
165.0	2.2	2.6	2.8	3.2	3.4	3.6	3.6	3.6	3.6
170.0	2.0	2.4	2.6	2.8	3.0	3.4	3.4	3.4	3.4
175.0		2.2	2.4	2.6	2.8	3.2	3.2	3.2	3.2
180.0			2.2	2.4	2.6	3.0	3.0	3.0	3.0
185.0				2.2	2.4	2.8	2.8	2.8	2.8
190.0					2.2	2.4	2.6	2.6	2.6
195.0						2.2	2.4	2.4	2.4
200.0						2.0	2.2	2.2	2.2
205.0								2.2	2.2
SLI - Code	746								
Max. permitted wind speed	30 ft/s								

2 295 104
2 295 134

Crane with 132 300 lbs (60,0t) counterweight (supporting span 28.4 x 28.2 ft)							
Length of main boom 154.8 ft Tele I 1.0 Tele II 1.0 Tele III 0.7 Tele IV 0.7							
Position of main boom 84°							
Luffing fly jib - lengths in ft							
	69.0 *	92.0	115.0	138.0	161.0	184.0	207.0
Slewing range	360°						
Radius in ft	Lifting capacities in 1000 lbs						
45.0	24.2						
50.0	24.2						
55.0	24.2	17.8					
60.0	24.2	17.8	13.0				
65.0	24.2	17.8	13.0	9.5			
70.0	24.2	17.8	13.0	9.5			
75.0	24.2	17.8	13.0	9.5	7.5		
80.0		17.8	13.0	9.5	7.5	5.1	
85.0		17.8	13.0	9.5	7.5	5.1	2.2
90.0		17.8	13.0	9.5	7.5	5.1	2.2
95.0		17.8	13.0	9.5	7.5	5.1	2.2
100.0			13.0	9.5	7.5	5.1	2.2
105.0			13.0	9.5	7.5	5.1	2.2
110.0			13.0	9.5	7.5	5.1	2.2
115.0			13.0	9.5	7.5	5.1	2.2
120.0				9.5	7.5	5.1	2.2
125.0				9.5	7.5	5.1	2.2
130.0				9.5	7.5	5.1	2.2
135.0				9.5	7.5	5.1	2.2
140.0				9.5	7.5	5.1	2.2
145.0				9.5	7.5	5.1	2.2
150.0					7.5	5.1	2.2
155.0					7.5	5.1	2.2
160.0					7.5	5.1	2.2
165.0					7.5	5.1	2.2
170.0						5.1	2.2
180.0						5.1	2.2
190.0							2.2
200.0							2.2
SLI - Code **	672	673	674	675	676	677	678
Max. permitted windspeed	36 ft/s	33 ft/s	30 ft/s	26 ft/s	23 ft/s	16 ft/s	16 ft/s
admissible wind surface of the load 0,0025 ft ² /lbs (0,5 m ² /t)							

* With additional weight on the head of the luffing fly jib

** SLI code 670 for raising the main boom to an angle of 84°