



534B

FOUR WHEEL DRIVE
ROUGH TERRAIN
90° PIVOT STEER
6,000 LB. or 9,000 LB. CAP.
36' LIFT HEIGHT

GRADALL[®]

MULTI-PURPOSE MATERIAL HANDLER



Courtesy of Crane.Market

A Four Wheel Drive, Rough Terrain Machine with 90° Pivot Steering.

The Gradall 534B Material Handler is designed for use on the most demanding applications. Particularly popular on the construction site, the 534B has a maximum capacity of either 6,000 lb. (2722 kg) or 9,000 lb. (4082 kg) and a lifting height of 36' (10.97 m). The second boom section is extended and retracted by a single cylinder and the third section by heavy cable anchored to the outer boom.



On uneven terrain, sway control lets the operator tilt the entire frame assembly up to 8° in either direction to keep the load level. In addition, automatic fork leveling keeps the forks at a constant angle with the ground. Leveling cylinders pinned to the back of the boom and frame allow oil to flow to and from tilt cylinder as boom is raised and lowered.



A combination of mechanical and hydrostatic drive, short length, and 90° pivot steering make the 534B highly maneuverable in tight quarters. Outside turning radius is less than the length of the chassis.

And the 534B's low height and long wheelbase give you increased stability.



The unique combination of tight quarter maneuverability, boom speed, good visibility, and a power-shift transmission give you a quick, agile, easy-to-operate Materials Handler.



Exceptional versatility is standard equipment on the Model 534B, keeping the handler in productive operation. With the QUICK-SWITCH™ coupler, the operator can change to a variety of attachments without assistance. Available attachments include: carriage, forks, bucket, truss boom, truss boom with instant hook, 6' mast and swing forks.



Operator comfort and convenience were important in the design of the Gradall Handler. Controls are grouped for convenience during operation. Single-lever control of lift and crowd facilitates horizontal fork travel.

The 534B is built for reliability and easy maintenance. Consider the one-piece weldment main frame, planetary drive axle, planetary rear hubs, and heavy-duty boom sections design features that keep your Handler out of the shop and on the job. Reliability, easy maintenance, and optimum versatility of the 534B make the best use of your time and resources.

Some illustrations may show options.

ATTACHMENT SPECIFICATIONS: (The QUICK-SWITCH® Tools That Handle the Material)

3 QUICK-STEPS TO MORE EFFICIENT MATERIAL HANDLING.



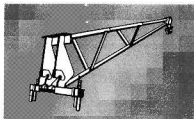
STEP 1
Extend boom,
tilt QUICK-SWITCH
back.



STEP 2
Drive or extend boom
into attachment.
Raise boom slightly to
engage attachment.



STEP 3
Tilt QUICK-SWITCH forward.
Engage locking pin.
Plug in quick disconnects for
attachments requiring hydraulics.
The machine is now fully operable.



TRUSS BOOM

Capacity—534B-6—1,200 lb.
(544 kg)
—534B-8—1,600 lb.
(726 kg)

Length—10' (3 m)

Maximum Hook Height—45'

(13.7 m)

Maximum Reach at Full Height

—12' (3.7 m)

Hook—Latch Type

TRUSS BOOM WITH WINCH*

Capacity—534B-6—1,200 lb.
(544 kg)
—534B-8—1,600 lb.
(726 kg)

Length—10' (3 m)

Maximum Hook Height—45'

(13.7 m)

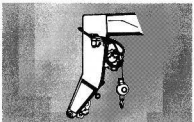
Maximum Reach at Full Height

—12' (3.7 m)

Wire Rope—3/8" diameter,

improved plow steel.

Hook—Single swivel hook w/latch
and overhaul ball.



INSTANT HOOK*

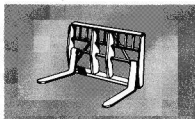
Capacity—4,000 lb. (1814 kg)

Wire Rope—3/8" (9.5 mm) diameter,
improved plow steel.

Hook—Single swivel hook w/latch
and overhaul ball.



*Requires auxiliary
hydraulic circuit



TILT CARRIAGES—534B-6

6,000 lbs. (2722 kg) capacity at 24"

(61 cm) load center.

2 widths—48" (122 cm) and 66"

(168 cm). Height 36" (91 cm).

Tilts 16° rearward and 98° forward

at ground.

Tilts 89° rearward and 25° forward

at full height.

FORKS (FLOATING, PIN TYPE)

48" (122 cm) Pallet forks—

1 1/4" (4.5 cm) x 6" (15 cm)

[6,000 lb. (2722 kg) Capacity/pair]

60" (152 cm) Pallet forks—

2" (5 cm) x 6" (15 cm)

[6,000 lb. (2722 kg) Capacity/pair]

48" (122 cm) Cubing forks—

2" (5 cm) x 2" (5 cm)

[3,000 lb. (1361 kg) Capacity/pair]

48" (122 cm) Pallet forks—

2" (5 cm) x 4" (10 cm)

[6,000 lb. (2722 kg) Capacity/pair]

TILT CARRIAGES—534B-8

9,000 lbs. (4082 kg) capacity at 24"

(61 cm) load center.

2 widths—48" (122 cm) and 66"

(168 cm). Height 36" (91 cm).

Tilts 16° rearward and 98° forward

at ground.

Tilts 89° rearward and 25° forward

at full height.

FORKS (FLOATING, PIN TYPE)

48" (122 cm) Pallet forks—

1 1/4" (4.5 cm) x 6" (15 cm)

[9,000 lb. (4082 kg) Capacity/pair]

60" (152 cm) Pallet forks—

2" (5 cm) x 6" (15 cm)

[9,000 lb. (4082 kg) Capacity/pair]

48" (122 cm) Cubing forks—

2" (5 cm) x 2" (5 cm)

[3,000 lb. (1361 kg) Capacity/pair]

48" (122 cm) Pallet forks—

2" (5 cm) x 4" (10 cm)

[8,000 lb. (3629 kg) Capacity/pair]

SWING CARRIAGE*

100° Total (50° left, 50° right)

534B-6—6,000 lb. (2,722 kg)

straight,

4,000 lb. (1,814 kg) swung.

534B-8—8,000 lb. (3,629 kg)

straight,

4,000 lb. (1,814 kg) swung.

SLOPE PILER CARRIAGES*

534B-6—6,000 lb. (2,722 kg)

capacity at 24" (61 cm) load center

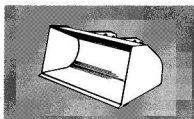
534B-8—9,000 lb. (4,082 kg)

capacity at 24" (61 cm) load center

2 widths—48" (122 cm) and 66"

(168 cm)

12° total (6° left, 6° right)



LIGHT MATERIAL BUCKET

Capacity—3/4 cubic yard (.57 m³)

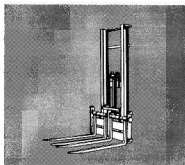
Width Overall—60" (152 cm)

Cutting Edge Size—1/2" x 6" x

61" (13 mm x 15 cm x 155 cm)

Lip Height at Full Raise—36"

(11 m)



VERTICAL MAST

Travel—6' (1.8 m)

Maximum Height—42' (12.8 m)

Capacity—

534B-6—5,500 lb. (2,495 kg) to 30"

(9.1 m)

3,000 lb. (1,361 kg) to 42"

(12.8 m)

534B-8—6,000 lb. (2,722 kg) to 31"

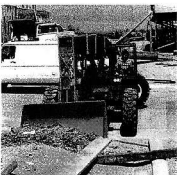
(9.4 m)

4,000 lb. (1,814 kg) to 42"

(12.8 m)

Carriages—48" (122 cm) or 66"

(168 cm)



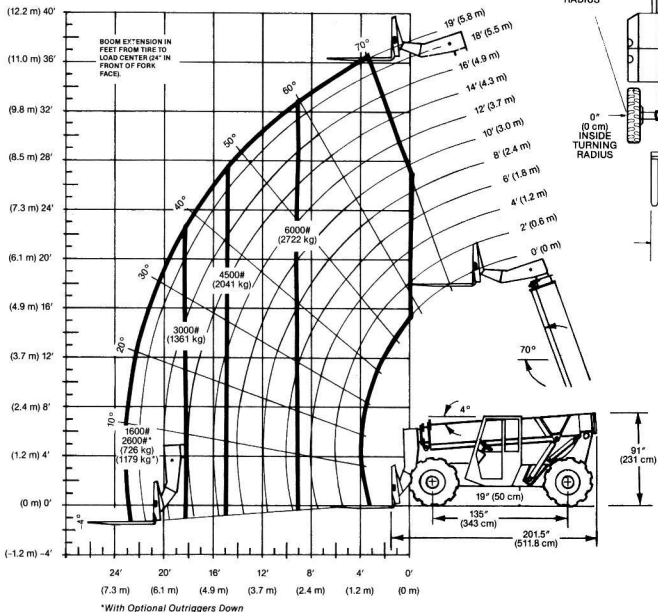
Specifications subject to change
without notice.

Courtesy of Crane Market

534B-6

3 SECTION BOOM
FOUR WHEEL DRIVE
ROUGH TERRAIN

PIVOT STEER
6,000 LBS. (2,722 kg) MAX. CAP.



PERFORMANCE SPECIFICATIONS

RATED CAPACITY at 24\" (61 cm)

Load Center . . . 6,000 lb. (2,722 kg)

LIFT SPEED (Boom Retracted)

Empty 129 f.p.m. (39 m/min)

Loaded 103 f.p.m. (31 m/min)

BOOM SPEED

Extend 100 f.p.m. (30 m/min)

Retract 160 f.p.m. (49 m/min)

GRADEABILITY

Empty 65%

Loaded 80%

Limited by traction conditions.

TRAVEL SPEEDS—Forward & Reverse

Gear Speed MPH (Km/Hr)

1 3.1 (5.0)

2 6.6 (10.6)

3 15.9 (25.6)

Road 17.9 (28.8)

DRAWBAR PULL

Empty 11,000 lb. (4,990 kg)

Loaded 16,000 lb. (7,258 kg)

OPERATING WEIGHT

W/Carriage

& Forks 20,370 lb. (9,240 kg)

IMPORTANT

Rated lift capacities shown are with machine on a firm, level surface with undamaged, properly inflated tires. Machine specifications and stability are based on rated lift capacities at specific boom angles and boom lengths. If specifications are critical, the proposed application should be discussed with your dealer.

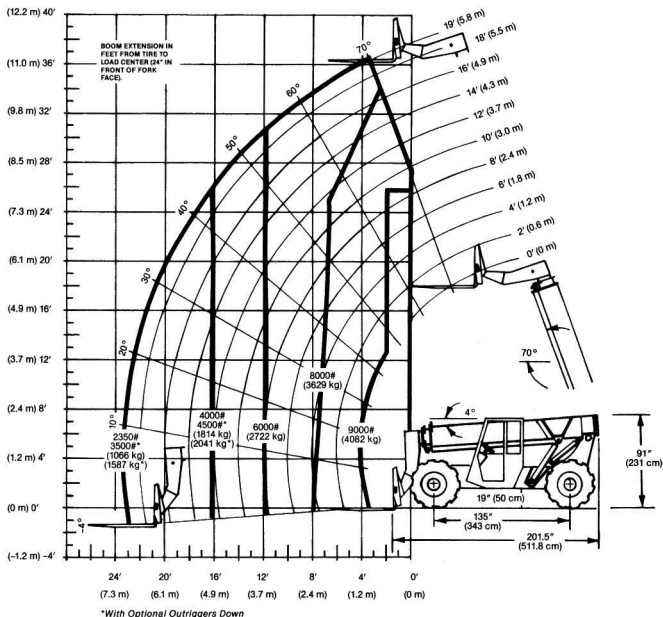
DO NOT exceed rated lift capacity loads, as unstable and dangerous machine conditions will result. DO NOT tip the machine forward to determine allowable load.

Handling personnel with the boom is not authorized.

534B-8

**3 SECTION BOOM
FOUR WHEEL DRIVE
ROUGH TERRAIN**

**PIVOT STEER
9,000 LBS. (4,082 kg) MAX. CAP.**



PERFORMANCE SPECIFICATIONS

RATED CAPACITY at 24\" (61 cm)

Load Center . . . 9,000 lb. (4,082 kg)

LIFT SPEED (Boom Retracted)

Empty 105 f.p.m. (32 m/min)

Loaded 80 f.p.m. (24 m/min)

BOOM SPEED

Extend 100 f.p.m. (30 m/min)

Retract 160 f.p.m. (49 m/min)

GRADEABILITY

Empty 65%

Loaded 80%

Limited by traction conditions.

TRAVEL SPEEDS—Forward & Reverse

Gear Speed MPH (Km/Hr)

1 3.1 (5.0)

2 6.6 (10.6)

3 15.9 (25.6)

Road 17.9 (28.8)

DRAWBAR PULL

Empty 11,000 lb. (4,990 kg)

Loaded 17,000 lb. (7,711 kg)

OPERATING WEIGHT

W/Carriage

& Forks 22,260 lb. (10,097 kg)

IMPORTANT

Rated lift capacities shown are with machine on a firm, level surface with undamaged, properly inflated CaCl filled tires. Machine specifications and stability are based on rated lift capacities at specific boom angles and boom lengths. If specifications are critical, the proposed application should be discussed with your dealer.

DO NOT exceed rated lift capacity loads, as unstable and dangerous machine conditions will result. DO NOT tip the machine forward to determine the allowable load.

Handling personnel with the boom is not authorized.

Courtesy of CraneMarket

GRADALL[®]

534B MULTI-PURPOSE MATERIAL HANDLER

ACCESSORIES

(ADD-ONS TO THE BASIC UNIT)

CAB ENCLOSURE PACKAGE

All windows and door with Plexiglass.
Lockable, swinging door.
Windshield wiper.

HEATER & DEFROSTER FAN

ROTATING BEACON

AUXILIARY HYDRAULIC CIRCUIT

Required for all attachments equipped with cylinders or other hydraulic components.
Consists of valves, controls, hydraulic lines.

HYDRAULIC JOYSTICK CONTROL

Boom lift and crowd.

OUTRIGGERS

12'1.5" (3.7 m) spread at grade—for increased capacities at the longer reaches.

This machine is designed to meet specifications of Part II ANSI B56.1-1969 as required by OSHA Section 1910.78(a)(2) and also comply with ANSI B56.1-1975 and B56.6-1987.

It is Gradall Policy to continually improve its products.

Therefore designs, materials and specifications are subject to change without notice and without incurring any liability on units already sold.

DRIVE LINE SPECIFICATIONS:

ENGINE

Make and Model	Perkins T4.236
Fuel	Turbo Diesel
Cycles	4
No. of Cylinders	4
Displacement	235.9 cu. in. (3.9 L)
Rated Speed	2600 rpm
Max. Gross BHP	102 HP (76 kw)
Fuel Tank	40 gal. (151.4 L)

ENGINE FILTERS

Two stage dry air cleaner—centrifugal pre-cleaner with continuous dust ejector PLUS cleanable and replaceable dry filter element. Visual service indicator.
Replaceable element type fuel filter.
Full flow replaceable element engine oil filter.

ELECTRICAL SYSTEM

Voltage - 12V Alternator - 61 amp
Battery - 2 @ 565 Cold Cranking AMP at 0°F. each.

TRANSMISSION

Full power shift. 3 speeds forward, 3 speeds reverse.
225 ft. lb. (305 Nm) torque rating. Neutral start switch.
Shift without stopping. Inching control.
Transmission speed lever on right on steering column.
Forward, neutral, reverse lever on left on steering column.
Single foot pedal control provides both braking and inching for lifting while maneuvering vehicle.

AXLES

Planetary hubs on rear wheels. Automatic engagement in 1st & 2nd gear.
Planetary front axle with limited slip differential.

BRAKES

Service - Hydraulic wet disc brake on each front wheel.
Hydraulic dynamic braking on rear wheels.
Parking - Hand set parking brake. Light on dash indicates when brake is on.

TIRES

13:00x24 - 12PR, G2 type.
75% CaCl filled on 534B-8.
Optional - 15.5x25 12PR, L2 type on front.

STEERING

Hydraulic power steering with manual backup.
Rear wheel steering, 90° pivot around either front tire.
Outside turning radius is less than chassis length.

INSTRUMENTS

Ammeter, Back-up alarm. Hour meter. Horn.
Engine oil pressure, temperature, fuel gauges.
Converter temperature gauge.
All gauges protected by Plexiglass anti-vandalism cover.

CONTROLS

Grouped for operator comfort and convenience.
Boom lift and crowd lever on single Joystick.
Tilt and sway lever on left on dash panel.
Foot throttle on floor.

HYDRAULIC SYSTEM

Two section in-line pump, direct driven from transmission.
40 gal. (151 l) system capacity.
10 micron filter with visual service indicator.
Lift, crowd, tilt, sway cylinders have safety checks to prevent dropping of load in the event of hose or other hydraulic failure.

GRADALL[®]

New Philadelphia, OH 44663