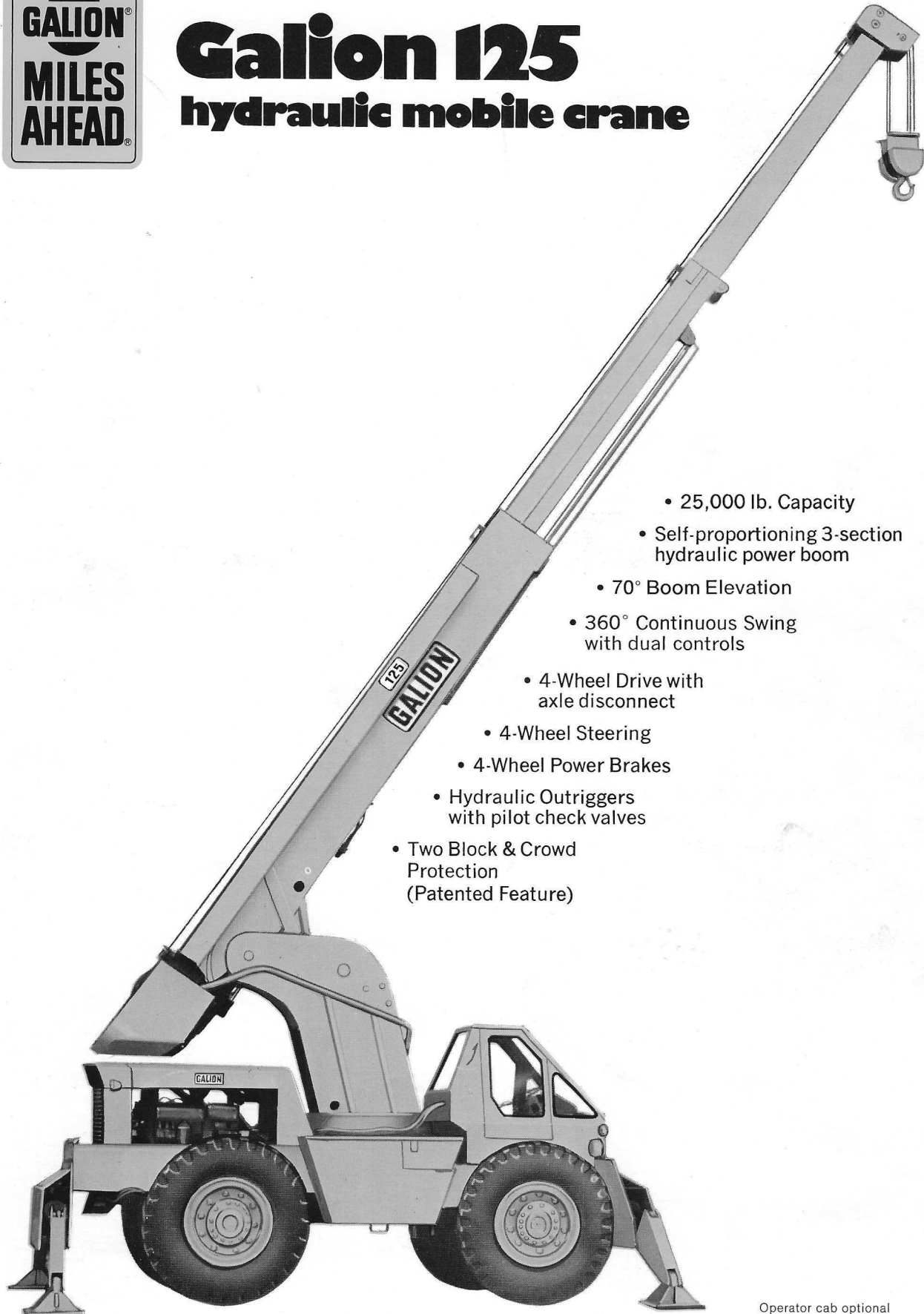


# **Galion 125**

## **hydraulic mobile crane**



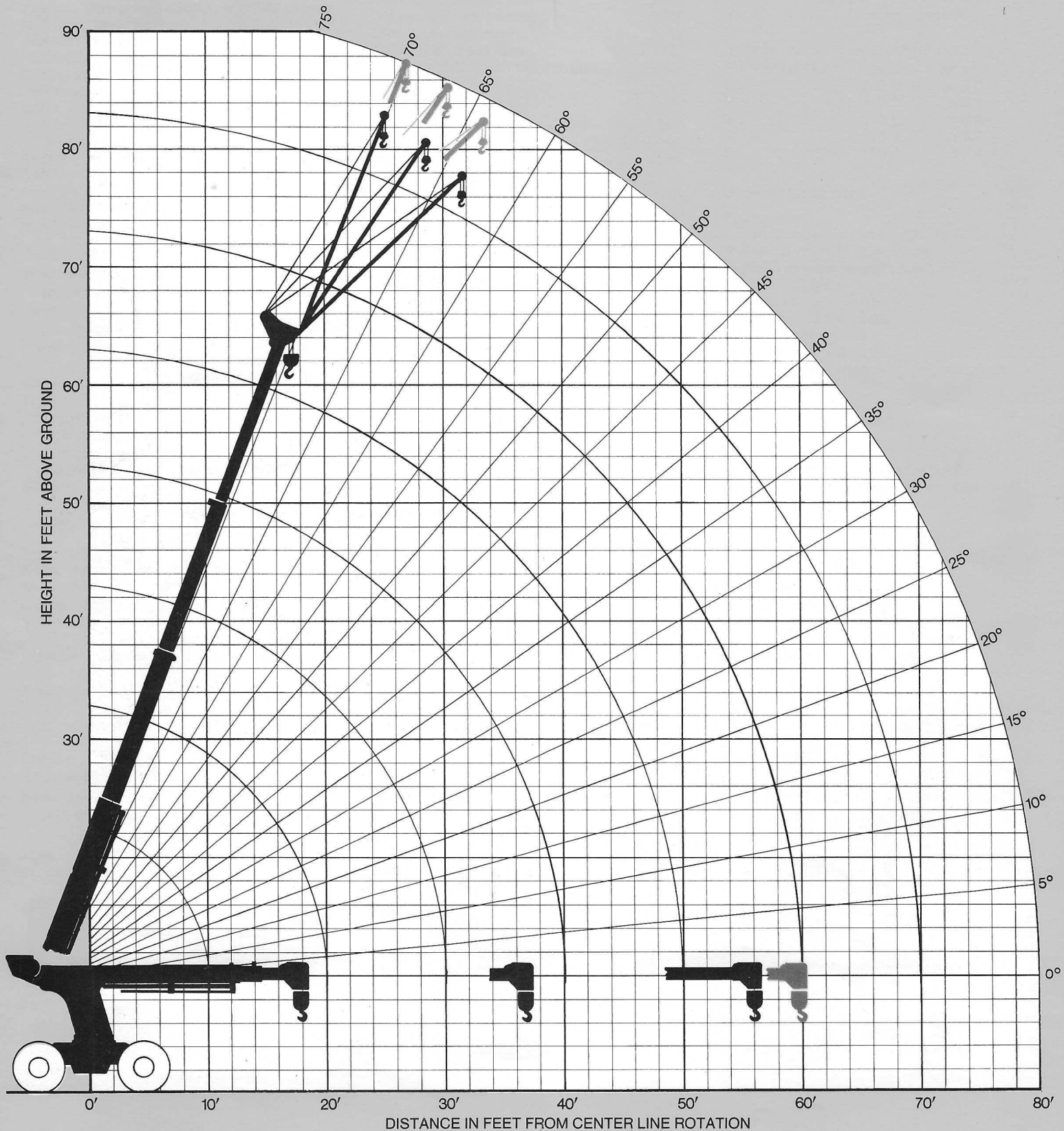
- 25,000 lb. Capacity
- Self-proportioning 3-section hydraulic power boom
- 70° Boom Elevation
- 360° Continuous Swing with dual controls
- 4-Wheel Drive with axle disconnect
- 4-Wheel Steering
- 4-Wheel Power Brakes
- Hydraulic Outriggers with pilot check valves
- Two Block & Crowd Protection (Patented Feature)

Operator cab optional

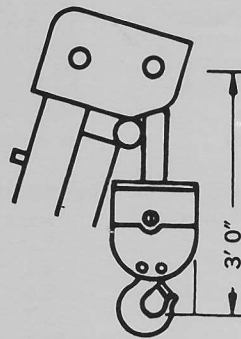
# Galion 125 hydraulic mobile crane

## Working Ranges

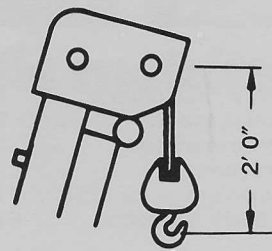
Range of 3-section boom shown in black, 4-section boom shown in color.



# Safe Loads Model

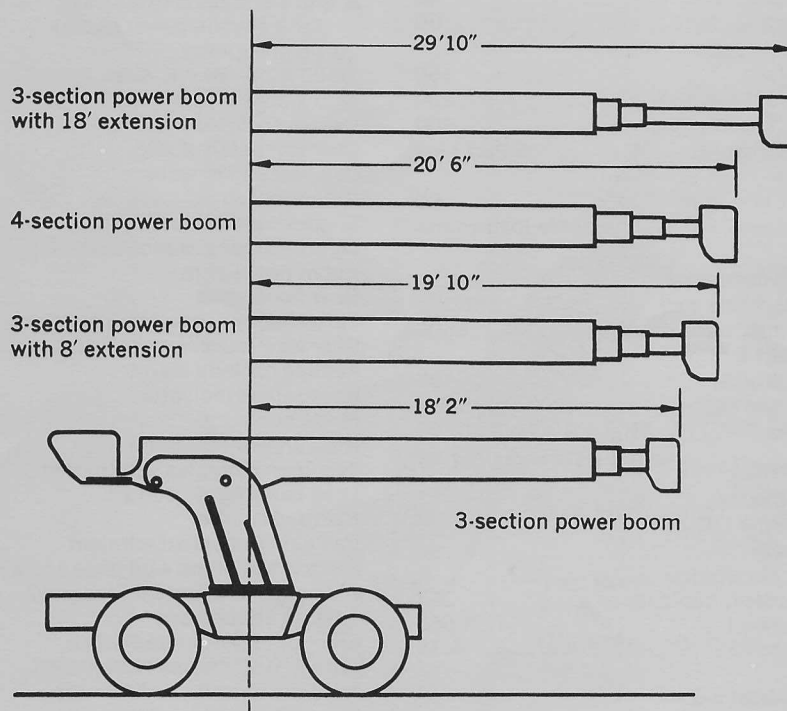


STANDARD HOOK BLOCK



OPTIONAL HOOK BLOCK

## RETRACTABLE TRAVEL LENGTHS



## HORIZONTAL BOOM RANGE

3-SECTION POWER BOOM 17'6" TO 37'6"				
Length of Extension	8'	18'	20' Jib w/8' Ext.	20' Jib w/18' Ext.
Horizontal Range Extension Retracted	19'2" to 39'2"	29'2" to 49'2"	39'2" to 59'2"	49'4" to 69'2"
Horizontal Range Extension Extended	25'6" to 45'6"	35'6" to 55'6"	45'6" to 65'6"	55'6" to 75'6"
HORIZONTAL BOOM RANGE 4-SECTION POWER BOOM 20' TO 60'				

## 3-SECTION POWER BOOM LOAD IN LBS.

WORKING RADIUS IN FEET	360° ROTATION		OVER FRONT
	WITHOUT OUTRIGGERS	WITH OUTRIGGERS	WITHOUT OUTRIGGERS
10	16,190	25,000	25,000
12	12,660	25,000	19,550
14	10,070	21,400	15,250
16	8,070	17,590	12,450
18	6,600	14,200	10,300
20	5,460	12,070	8,700
22	4,670	10,370	7,480
24	4,040	9,200	6,500
26	3,480	8,000	5,690
28	3,100	7,140	5,000
30	2,700	6,370	4,460
32	2,380	5,740	3,990
34	2,040	5,140	3,600
36	1,760	4,600	3,270

## 4-SECTION POWER BOOM LOAD IN LBS. (CLASS 10-33)

WORKING RADIUS IN FEET	360° ROTATION		OVER FRONT
	WITHOUT OUTRIGGERS	WITH OUTRIGGERS	WITHOUT OUTRIGGERS
10		25,000	23,460
12	12,700	25,000	19,300
14	10,000	21,400	15,760
15	8,900	19,550	14,250
16	7,900	17,550	12,800
18	6,300	14,300	10,500
20	5,090	11,900	8,580
22	4,060	10,000	7,050
24	3,270	8,460	5,860
25	2,940	7,780	5,340
30	1,760	5,440	3,570
35	1,150	4,100	2,500
40	760	3,300	2,000
45		2,770	1,580
50		2,340	1,160
55		1,900	800
60		1,480	

The loads given on this chart are maximum allowable loads due to structural limitations of jib and boom. For tipping limitations, deduct 400 lbs. plus the weight of any load handling device from ratings given on the chart to determine safe working load at any given radius.

# 125 hydraulic mobile crane — Based on 85% Tipping — Crane on firm level surface.

## 3-SECTION POWER WITH 8' EXTENSION RETRACTED LOAD IN LBS.

WORKING RADIUS IN FEET	360° ROTATION		OVER FRONT
	WITHOUT OUTRIGGERS	WITH OUTRIGGERS	WITHOUT OUTRIGGERS
10		25,000	
12	12,880	25,000	19,400
14	9,860	21,070	14,870
16	7,740	17,250	11,950
18	6,290	14,240	9,900
20	5,240	11,900	8,370
22	4,400	10,100	7,140
24	3,800	8,750	6,200
26	3,300	7,690	5,400
28	2,860	6,800	4,700
30	2,470	6,040	4,190
32	2,200	5,400	3,740
34	1,900	4,850	3,350
36	1,660	4,400	3,000
38	1,400	4,000	2,680

## 3-SECTION POWER WITH 18' EXTENSION RETRACTED LOAD IN LBS.

WORKING RADIUS IN FEET	360° ROTATION		OVER FRONT
	WITHOUT OUTRIGGERS	WITH OUTRIGGERS	WITHOUT OUTRIGGERS
10			
12		22,600	
14	10,000	20,200	15,850
16	8,200	18,300	12,900
18	6,900	15,170	10,740
20	5,880	12,750	9,000
22	5,040	11,000	7,700
24	4,370	9,600	6,700
26	3,750	8,500	5,950
28	3,360	7,500	5,250
30	2,940	6,700	4,660
32	2,560	5,970	4,100
34	2,270	5,350	3,700
36	1,930	4,840	3,300
38	1,680	4,380	2,970
40	1,360	4,000	2,680
45	760	3,100	2,040

## 3-SECTION POWER WITH 8' EXTENSION EXTENDED LOAD IN LBS.

WORKING RADIUS IN FEET	360° ROTATION		OVER FRONT
	WITHOUT OUTRIGGERS	WITH OUTRIGGERS	WITHOUT OUTRIGGERS
12		25,000	19,550
14		21,400	15,300
16	8,200	17,960	12,500
18	6,840	14,760	10,400
20	5,780	12,580	8,870
22	4,900	10,900	7,650
24	4,200	9,490	6,600
26	3,600	8,290	5,800
28	3,140	7,290	5,100
30	2,650	6,440	4,550
32	2,340	5,780	4,060
34	2,040	5,200	3,600
36	1,770	4,790	3,250
38	1,570	4,340	2,900
40	1,400	3,960	2,600
45	900	3,070	2,040

## 3-SECTION POWER WITH 18' EXTENSION EXTENDED LOAD IN LBS. (CLASS 14-42)

WORKING RADIUS IN FEET	360° ROTATION		OVER FRONT
	WITHOUT OUTRIGGERS	WITH OUTRIGGERS	WITHOUT OUTRIGGERS
14		15,900	
16		14,300	12,700
18	7,300	13,000	11,050
20	6,100	11,900	9,400
22	5,180	11,000	8,170
24	4,400	10,100	7,240
26	3,800	8,890	6,400
28	3,360	7,860	5,650
30	2,880	6,950	5,000
32	2,650	6,250	4,500
34	2,350	5,600	4,080
36	2,080	5,070	3,650
38	1,840	4,590	3,300
40	1,660	4,200	2,970
45	1,150	3,300	2,300
50	700	2,600	1,660
55		2,080	1,000

The rated lifting capacities shown are the maximum allowable loads covered by the manufacturer's warranty.

Ratings above the heavy line are based on the machine's hydraulic or structural competence and not on the machine's stability.

Operating radius is the horizontal distance from the axis of rotation before loading to the vertical hoist line or tackle with load applied.

The weight of the hook block and all load handling devices (except hoist rope) are considered part of the load lifted and suitable allowances for them must be made to determine the net safe load.

Single line weighted hook weighs 125 lbs.

Two part line hook block weighs 100 lbs.

Multiple line hook block weighs 360 lbs.

Crane load ratings without outriggers, depends on tire capacity and condition of tires. Ratings are based on 14 x 24—16 Ply tires inflated to 80 P.S.I.

Practical working loads depend on level machine, supporting surface, wind, and other factors affecting stability, hazardous surroundings, experience of personnel and proper handling, all of which must be taken into account by the operator.

Positioning or operation at radii and boom or jib lengths beyond the maximums and minimums shown is not intended or approved.

When jib is installed, lifting capacities over main boom should be reduced by 1,000 lbs.

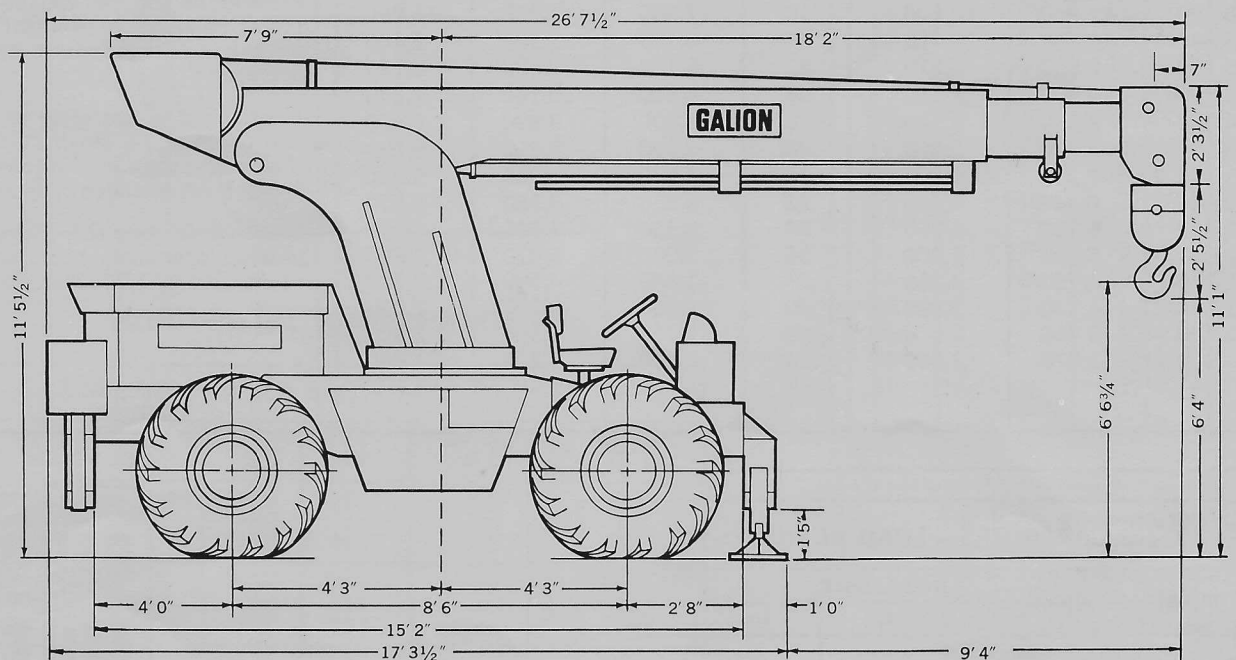
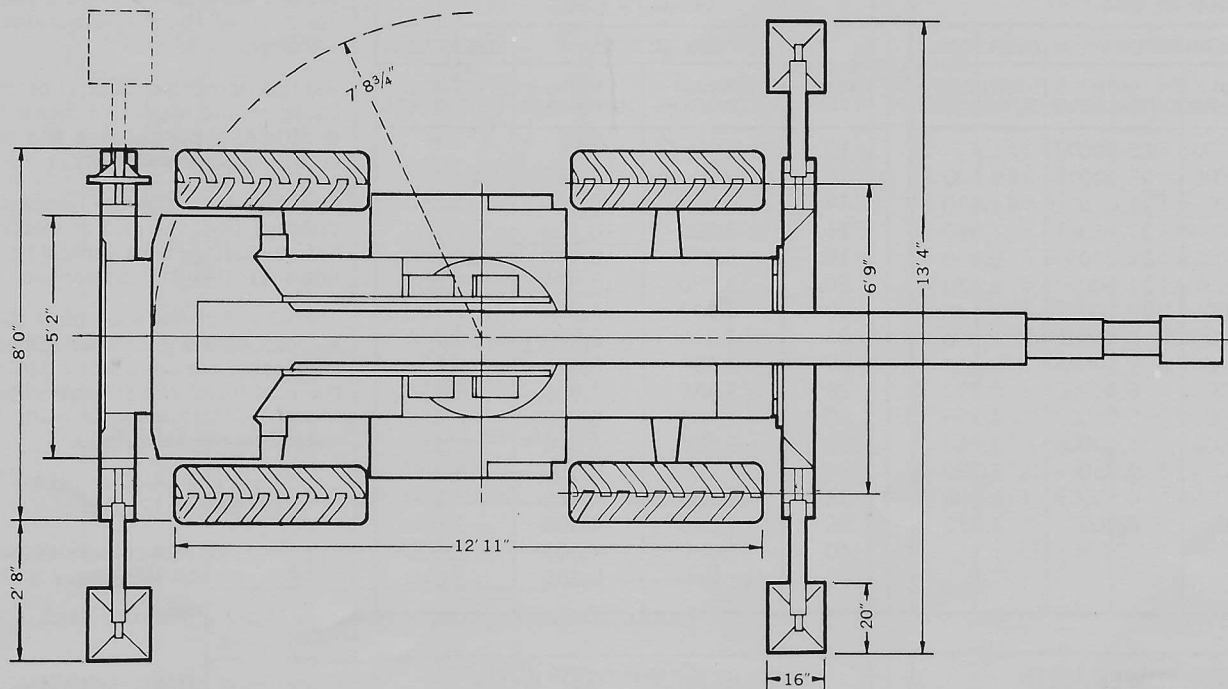
## 20' JIB CAPACITIES — LOAD IN LBS.

JIB ANGLE	BOOM ANGLE				
	70°	60°	50°	40°	30°
0°	5,000	5,000	3,900	3,000	2,500
15°	4,500	3,400	2,700	2,350	2,000
30°	3,000	2,500	2,150	1,850	1,500

**GALION®**  
**MILES  
AHEAD®**



# General Dimensions



# Specifications

## Galion model 125 hydraulic mobile crane

### Standard Equipment Features

Four-wheel steering. Four-wheel drive with axle disconnect. "No Spin" front axle. Four-wheel power brakes. 17 to 37 ft. telescopic power boom. 14:00 x 24 — 16 P.R. tires. Removable boom point with 3 sheaves. 70° maximum boom elevation. 360° continuous rotation. Dual swing control. 80 GPM tandem hydraulic pumps. Horn. Engine air cleaner. Muffler. Adjustable "bucket type" seat. Hourmeter. Electric fuel gauge. Converter temperature gauge. Overcenter check valves for crowd and boomlift cylinders. Hook safety latch. Rear steer indicator. Automatic hoist and swing brake. Cross line relief protection for winch and swing circuits. Extra hydraulic circuit for boom mounted attachments. Torque converter. Powershift forward and reverse. 5-part line hook block. Hydraulic outriggers with pilot check valves. 12-volt electrical system, 37 amp alternator.

### General dimensions

Weight with outriggers  
(approx.), pounds ..... 35,600  
Length, overall ..... 26'7½"  
Width, overall ..... 8'  
Turning Radius ..... 17'4"

### Chassis

Frame  
Length, overall ..... 15'2"  
Box section, center ..... 20" x 5"  
Box section, over axles ..... 15" x 5"  
Turnable bearing ..... Ball  
Ground Clearance  
Axle ..... 16"  
Outriggers ..... 15"

### Axles

Front and rear—Steering Type, planetary  
Mounting  
Front ..... Rigid to frame  
Rear (no locks needed) ..... Elastomeric suspension

Wheels ..... Integral disc and rim

### Steering (flow regulated from main system)

Front ..... Manual with power booster  
Rear ..... Hydraulic

### Brakes

Service—Hydraulic Power, 4-Wheel. . 17" x 4"  
Parking—Mechanical on  
axle drive ..... 13⅝" x 2"

### Crane

Controls ..... Hydraulic  
Tandem Hydraulic Pumps 50 and 30 GPM

### Boom

Reach, horizontal, minimum ..... 17'6"  
Reach, horizontal, maximum ..... 37'6"  
Swing, rotation continuous ..... 360°  
Elevation, maximum ..... 70°  
Tail Swing, maximum ..... 7'8¾"  
Hook height, boom horizontal ..... 6'6¾"

### Crane Performance

Boom topping speed ..... 17.0 Sec.  
Boom lowering speed ..... 16.0 Sec.  
Swing speed r.p.m. .... 3.85  
Outrigger speed  
Down ..... 3.5 seconds  
Up ..... 3 seconds

### Crowd speed (approx.)

Extending, fpm ..... 50  
Retracting, fpm ..... 60  
Average line speed  
Low, fpm ..... 150  
Intermediate, fpm ..... 250  
High, fpm ..... 400  
Standard rigging ..... 5-Part Line  
Maximum hook speed with  
5-part line, fpm ..... 80  
Capacity ..... See safe load charts

### Winch Performance

Single part line pull,  
maximum, bare drum, lbs. .... 6500  
Single part line pull,  
rated, lbs. .... 5400  
Winch drum capacity ..... 450 ft. ⅝" cable  
Wire rope ..... ⅝" x 8 x 25 FS IWRC  
spin-resistant regular lay

### Engine (Choice)

**IHC Gasoline UC-263**  
Horsepower ..... 90  
Number of cylinders ..... 6  
Displacement, cubic inches ..... 263  
Bore, inches ..... 3.562  
Stroke, inches ..... 4.39

### Detroit Diesel 3-53N

Horsepower ..... 90  
Number of cylinders ..... 3  
Displacement, cubic inches ..... 159  
Bore, inches ..... 3.875  
Stroke, inches ..... 4.50

### Transmission

Speeds ..... 5  
Forward and Reverse ..... Power Shift  
Transfer case .... Built-in front axle

### Converter

Size ..... 11¾"  
Ratio ..... 2.5:1

### Speeds (variable by governor control)

MPH (approx.)	forward	reverse
1	3.0	3.0
2	5.1	5.1
3	8.6	8.6
4	13.7	13.7
5	19.4	19.4

### Optional Equipment

Four-section  
hydraulic power boom (20' to 60')  
8' and 18' manual extensions  
(for 3-section power boom)  
20' jib and gantry  
14:00 x 24—20 P.R. tires  
17.5 x 25—14 P.R. tires  
Deluxe enclosed cab  
Operator safety guard  
Cab heater, hot water  
Defroster fan  
Engine hood sides  
Lights—driving, directional  
Boom floodlights  
Rear floodlights  
Pulsating, red, rear mounted lights  
Rear view mirrors, outside mounted  
Audible back-up alarm  
Boom angle indicator  
Pintle hook  
High lift work platform  
Two-man Fiberglas workbasket  
Load carrying platform  
Railroad coupler  
Rail guide wheel attachment  
Electric tire pump with hose and gauge  
Clamshell attachment, hydraulic  
Magnet attachment  
Front or rear mounted winch  
Auxiliary winch, boom mounted  
Auxiliary sheave (boompoint)  
Sound suppression kit

Specifications, Materials  
and Design subject to  
change without notice.



**Galion**

**DRESSER**

**Galion Manufacturing Division**

Dresser Industries, Inc., Galion, Ohio 44833, U.S.A. Cable Address: GALIONIRON