

TECHNICAL  
DATASHEET

**FRANNA**<sup>®</sup>  
A TEREX BRAND

# AT40

PICK AND CARRY  
CRANE



MAXIMUM CAPACITY  
**40t**



MAXIMUM BOOM LENGTH  
**19.8m**



MAXIMUM HOOK HEIGHT  
**19m**

[terex.com/franna](http://terex.com/franna)



# OVERVIEW

The AT 40 is the largest pick and carry crane in the Franna product range and has been specifically designed for higher capacity lifting applications, boasting 44% more load moment capacity than the Franna MAC 25. The 3-axle design eliminates the need for a removable counterweight and the third axle control system raises axle 3 when operating on a work site to provide a smooth turning circle.



## ⚙️ KEY FEATURES AND BENEFITS:

- ▶ 40 tonne at 1.1m radius on lug
- ▶ 35 tonne at 2.0m radius on 8 part hook block
- ▶ 20 tonne on machinery (Rhino) hook
- ▶ 19m maximum hook height
- ▶ Single line pull 4.3 tonne
- ▶ Dynamic LMI (patent protected)
- ▶ Designed to AS1418.5 (2013)
- ▶ Full width isolated cabin ensures excellent visibility
- ▶ Automatic 4WD engages when a loss of traction is detected
- ▶ High strength boom with easy maintenance
- ▶ Hydro-pneumatic suspension enhances roadability
- ▶ Turret counterweight for greater articulated lifting capacity

# TECHNICAL DESCRIPTION

## 01. Boom

|                            |               |
|----------------------------|---------------|
| Maximum boom length        | 19.8m         |
| Maximum hook height        | 19.0m         |
| Boom elevation angle range | -5°/60°       |
| Articulation               | 35° R / 35° L |
| Fixed lug                  | 40 tonne      |
| Machinery hook (rhino)     | 20 tonne      |

## 02. Winch

|                            |                                 |
|----------------------------|---------------------------------|
| Maximum line pull          | 4.3 tonne                       |
| Two speed winch            | 38 m/min / 76 m/min             |
| 7 Part Hook block          | 30 tonne maximum rated capacity |
| Optional 8 Part Hook block | 35 tonne maximum rated capacity |

## 03. Engine & Transmission

|                 |                 |
|-----------------|-----------------|
| Standard engine | Mercedes OM 906 |
| Engine power    | 205kW           |
| Engine torque   | 1100 Nm         |
| Fuel Type       | Diesel          |
| Fuel Capacity   | 500 litre       |
| Transmission    | Allison 6 speed |
| Transfer case   | ZF 2:1 Ratio    |

## 04. Hydraulic System

|                          |               |
|--------------------------|---------------|
| Axial piston pump        | 135cc/rev     |
| Maximum pump flow rate   | 300 litre/min |
| Maximum working pressure | 350 bar       |
| Hydraulic tank capacity  | 500 litre     |

## 05. Chassis

|                             |                     |
|-----------------------------|---------------------|
| Front Axle (Tare / GVM)     | 11,100kg / 12,000kg |
| Axle 2 (Tare / GVM)         | 9,200kg / 10,000kg  |
| Axle 3 (Tare / GVM)         | 9,200kg / 10,000kg  |
| Axle Total (Tare / GVM)     | 29,500kg / 32,000kg |
| Turning circle (Highway)    | 10.2m               |
| Turning circle (crane mode) | 9.0m                |

## 06. Brakes & Suspension

|              |                                   |
|--------------|-----------------------------------|
| Brake System | Air operated disc brakes with ABS |
| Suspension   | Hydro pneumatic suspension        |

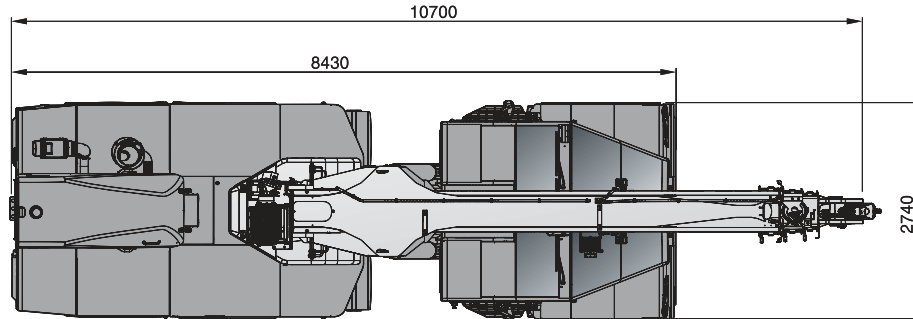
## 07. Vehicle Performance

|                            |        |
|----------------------------|--------|
| Maximum rated travel speed | 80km/h |
| Gradeability               | 39%    |

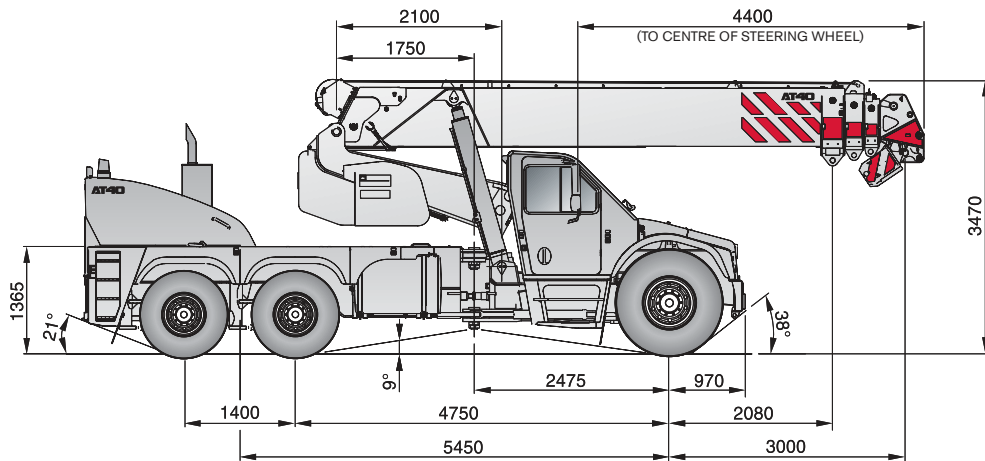


# DIMENSIONS / AREA OF OPERATION

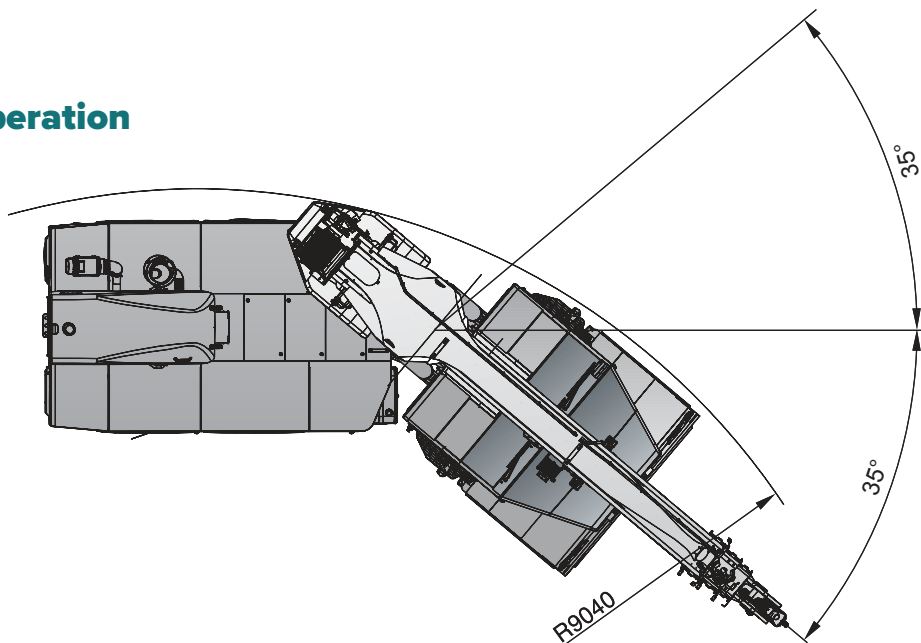
## Plan view



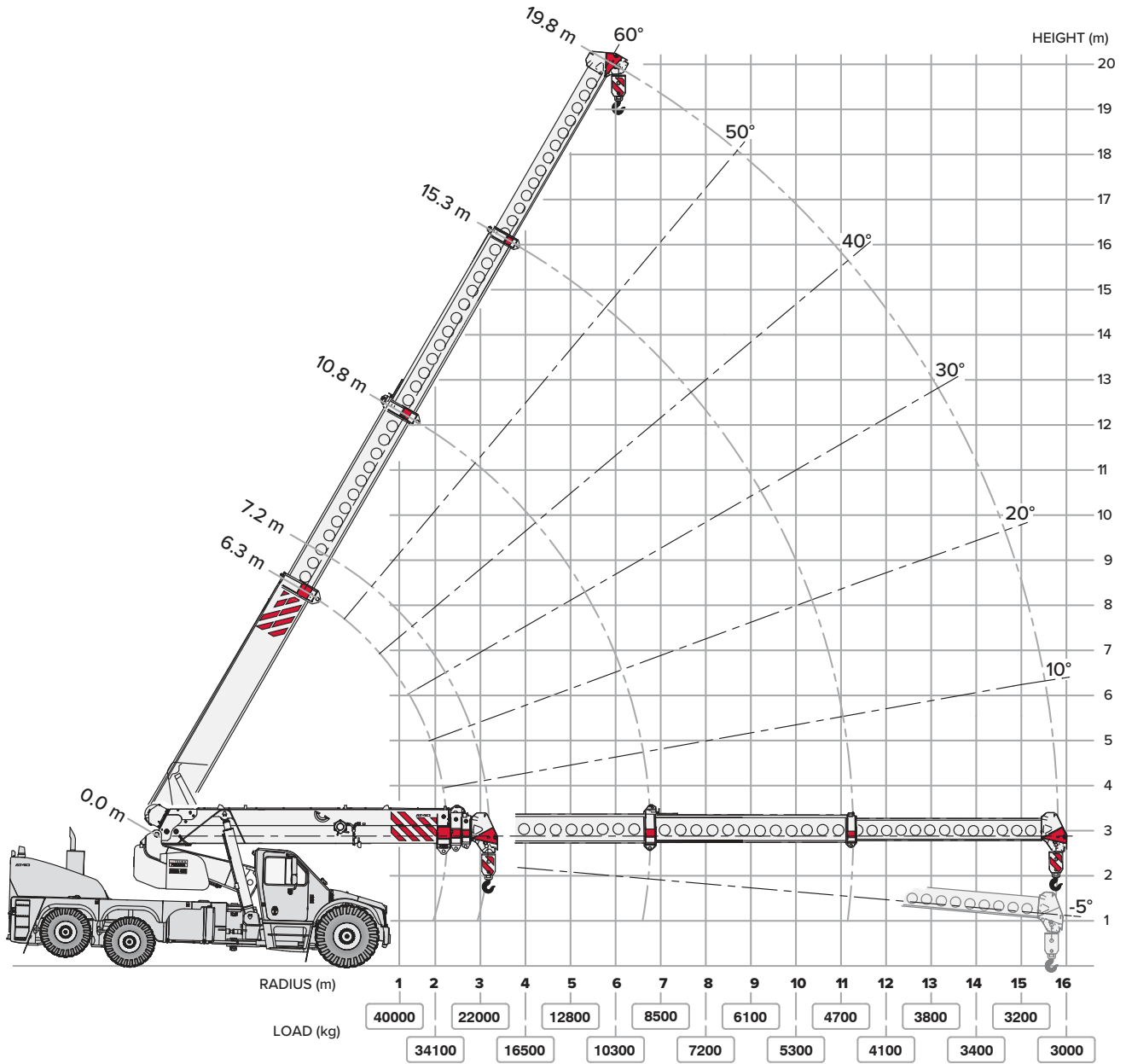
## Right hand view



## Area of operation



# RADIUS LOAD CHART



NOTE: Rated Capacity values shown are for the Pick and Carry Chart.  
The Static Chart will give higher rated capacities.





# LOAD CHART

## RATED CAPACITY CHART STATIC (0 km/hr) - FALL BLOCK

| RAD   | BOOM LENGTH TO HEAD SHEAVES - 3rd BOOM RETRACTED |       |       |       |       |       |       |       |       |        |       |       |       | 3rd BOOM EXTENDING |       |       |       | RAD |       |
|-------|--|-------|-------|-------|-------|-------|-------|-------|-------|--------|-------|-------|-------|--------------------|-------|-------|-------|-----|-------|
|       | 7.23   | 7.5   | 8.0   | 8.5   | 9.0   | 9.5   | 10.0  | 10.5  | 11.0  | 12.0   | 13.0  | 14.0  | 15.0  | 16.0               | 17.0  | 18.0  | 19.83 |     |       |
| m     | kg   | kg    | kg    | kg    | kg    | kg    | kg    | kg    | kg    | kg     | kg    | kg    | kg    | kg                 | kg    | kg    | kg    | kg  | m     |
| 1.0   | 35000  | 35000 | 35000 | 35000 | 35000 | 35000 |       |       |       |        |       |       |       |                    |       |       |       |     | 1.0   |
|       | 35000  | 35000 | 33000 | 28700 | 25500 | 23000 |       |       |       |        |       |       |       |                    |       |       |       |     |       |
| 2.0   | 47   | 49    | 52    | 55    | 57    | 59    |       |       |       |        |       |       |       |                    |       |       |       |     | 2.0   |
|       | 34000  | 30800 | 26100 | 22900 | 20500 | 18500 | 17000 | 15600 | 14500 |        |       |       |       |                    |       |       |       |     |       |
| 2.5   | 34   | 37    | 42    | 46    | 49    | 52    | 54    | 56    | 58    |        |       |       |       |                    |       |       |       |     | 2.5   |
|       | 30200  | 30300 | 30300 | 30400 | 30100 | 30400 | 30100 | 29600 | 29100 | 28600  | 28200 | 27400 |       |                    |       |       |       |     |       |
| 3.0   | 25   | 30    | 36    | 41    | 44    | 47    | 50    | 52    | 55    | 58     |       |       |       |                    |       |       |       |     | 3.0   |
|       | 24700  | 24800 | 24800 | 24900 | 24900 | 25000 | 25000 | 24800 | 24500 | 23800  | 23200 |       |       |                    |       |       |       |     |       |
| 3.5   | 11   | 20    | 29    | 35    | 39    | 43    | 46    | 49    | 51    | 55     | 58    |       |       |                    |       |       |       |     | 3.5   |
|       | 23800  | 21700 | 20900 | 21000 | 21000 | 21100 | 21100 | 21100 | 21100 | 21000  | 20500 | 20100 |       |                    |       |       |       |     |       |
| 4.0   | (3.1)  | (3.4) | 19    | 28    | 34    | 38    | 42    | 45    | 48    | 52     | 56    | 59    |       |                    |       |       |       |     | 4.0   |
|       | 23200  | 21100 | 20400 | 20400 | 20500 | 20500 | 20500 | 19300 | 17400 | 14700  | 12700 | 11200 |       |                    |       |       |       |     |       |
| 5.0   |  |       | 18600 | 18000 | 18100 | 18100 | 18200 | 18200 | 18200 | 18200  | 18200 | 18000 | 17600 |                    |       |       |       |     | 5.0   |
|       |  |       | 18100 | 17500 | 17600 | 17600 | 17700 | 17700 | 17100 | 14300  | 12300 | 10900 | 9700  |                    |       |       |       |     |       |
| 6.0   |  |       | 17100 | 16500 | 16500 | 14400 | 13000 | 11900 | 11000 | 9600   | 8600  | 7700  | 7000  |                    |       |       |       |     | 6.0   |
|       |  |       | (3.9) | 19    | 27    | 33    | 37    | 41    | 44    | 49     | 53    | 56    | 59    |                    |       |       |       |     |       |
| 7.0   |  |       |       | 16200 | 14400 | 14000 | 14000 | 14100 | 14100 | 14100  | 14100 | 14200 | 14200 | 14200              | 14200 |       |       |     | 7.0   |
|       |  |       |       | 15800 | 14000 | 13600 | 13600 | 13700 | 13700 | 13700  | 11800 | 10300 | 9200  | 8300               | 7700  |       |       |     |       |
| 8.0   |  |       |       | 14900 | 13100 | 12800 | 12400 | 11100 | 10100 | 8700   | 7700  | 6900  | 6300  | 5800               | 5500  |       |       |     | 8.0   |
|       |  |       |       | (4.4) | (4.9) | 18    | 26    | 31    | 36    | 42     | 47    | 51    | 54    | 57                 | 59    |       |       |     |       |
| 9.0   |  |       |       |       | 12800 | 11500 | 11300 | 11300 | 11400 | 11400  | 11400 | 11400 | 11500 | 11600              | 11800 |       |       |     | 9.0   |
|       |  |       |       |       | 12500 | 11200 | 11000 | 11000 | 11000 | 11000  | 11100 | 10000 | 8800  | 7900               | 7300  | 6800  |       |     |       |
| 10.0  |  |       |       |       | 11700 | 10500 | 10300 | 9800  | 8200  | 7100   | 6300  | 5700  | 5300  | 5000               | 4800  |       |       |     | 10.0  |
|       |  |       |       |       | (5.4) | (5.9) | 17    | 25    | 34    | 40     | 45    | 49    | 52    | 55                 | 58    |       |       |     |       |
| 11.0  |  |       |       |       |       |       |       | 10500 | 9600  | 9400   | 9400  | 9500  | 9500  | 9500               | 9700  | 9800  | 10000 |     | 11.0  |
|       |  |       |       |       |       |       |       | 10200 | 9300  | 9100   | 9200  | 8600  | 7700  | 7000               | 6500  | 5800  |       |     |       |
| 12.0  |  |       |       |       |       |       |       | 9500  | 8700  | 8000   | 6700  | 5900  | 5300  | 4800               | 4600  | 4400  | 4000  |     | 12.0  |
|       |  |       |       |       |       |       |       | (6.4) | (6.9) | 24     | 33    | 39    | 44    | 48                 | 51    | 54    | 58    |     |       |
| 13.0  |  |       |       |       |       |       |       |       |       | 8100   | 8000  | 8000  | 8000  | 8100               | 8200  | 8300  | 8500  |     | 13.0  |
|       |  |       |       |       |       |       |       |       |       | 7800   | 7700  | 7700  | 7800  | 7500               | 6900  | 6300  | 5600  |     |       |
| 14.0  |  |       |       |       |       |       |       |       |       | 7300   | 6700  | 5600  | 5000  | 4500               | 4300  | 4000  | 3700  |     | 14.0  |
|       |  |       |       |       |       |       |       |       |       | (7.9)  | 23    | 32    | 38    | 42                 | 46    | 50    | 54    |     |       |
| 15.0  |  |       |       |       |       |       |       |       |       | 6900   | 6800  | 6900  | 6900  | 6900               | 7000  | 7200  | 7300  |     | 15.0  |
|       |  |       |       |       |       |       |       |       |       | 6700   | 6600  | 6600  | 6700  | 6800               | 6200  | 5400  |       |     |       |
| 15.68 |  |       |       |       |       |       |       |       |       | 6200   | 5600  | 4800  | 4300  | 4000               | 3800  | 3500  |       |     | 15.68 |
|       |  |       |       |       |       |       |       |       |       | (8.9)  | 22    | 31    | 37    | 41                 | 45    | 51    |       |     |       |
|       |  |       |       |       |       |       |       |       |       | 6000   | 5900  | 6000  | 6100  | 6200               | 6400  |       |       |     |       |
|       |  |       |       |       |       |       |       |       |       | 5800   | 5700  | 5800  | 5900  | 6000               | 5300  |       |       |     |       |
|       |  |       |       |       |       |       |       |       |       | 5400   | 4800  | 4100  | 3800  | 3600               | 3200  |       |       |     |       |
|       |  |       |       |       |       |       |       |       |       | (9.9)  | 21    | 30    | 36    | 40                 | 47    |       |       |     |       |
|       |  |       |       |       |       |       |       |       |       | 5300   | 5200  | 5400  | 5500  | 5600               |       |       |       |     |       |
|       |  |       |       |       |       |       |       |       |       | 5100   | 5100  | 5200  | 5300  | 5200               |       |       |       |     |       |
|       |  |       |       |       |       |       |       |       |       | 4700   | 4200  | 3700  | 3400  | 3100               |       |       |       |     |       |
|       |  |       |       |       |       |       |       |       |       | (10.9) | 21    | 29    | 35    | 42                 |       |       |       |     |       |
|       |  |       |       |       |       |       |       |       |       | 4700   | 4700  | 4800  | 5000  |                    |       |       |       |     |       |
|       |  |       |       |       |       |       |       |       |       | 4500   | 4600  | 4700  | 4800  |                    |       |       |       |     |       |
|       |  |       |       |       |       |       |       |       |       | 4200   | 3700  | 3300  | 2900  |                    |       |       |       |     |       |
|       |  |       |       |       |       |       |       |       |       | (11.9) | 20    | 28    | 38    |                    |       |       |       |     |       |
|       |  |       |       |       |       |       |       |       |       | 4200   | 4300  | 4500  |       |                    |       |       |       |     |       |
|       |  |       |       |       |       |       |       |       |       | 4100   | 4200  | 4300  |       |                    |       |       |       |     |       |
|       |  |       |       |       |       |       |       |       |       | 3800   | 3400  | 2800  |       |                    |       |       |       |     |       |
|       |  |       |       |       |       |       |       |       |       | (12.9) | 20    | 32    |       |                    |       |       |       |     |       |
|       |  |       |       |       |       |       |       |       |       | 3900   | 4000  |       |       |                    |       |       |       |     |       |
|       |  |       |       |       |       |       |       |       |       | 3500   | 2800  |       |       |                    |       |       |       |     |       |
|       |  |       |       |       |       |       |       |       |       | (13.9) | 26    |       |       |                    |       |       |       |     |       |
|       |  |       |       |       |       |       |       |       |       | 3600   |       |       |       |                    |       |       |       |     |       |
|       |  |       |       |       |       |       |       |       |       | 2900   |       |       |       |                    |       |       |       |     |       |
|       |  |       |       |       |       |       |       |       |       | 17     |       |       |       |                    |       |       |       |     |       |
|       |  |       |       |       |       |       |       |       |       | 3300   |       |       |       |                    |       |       |       |     |       |
|       |  |       |       |       |       |       |       |       |       | 3000   |       |       |       |                    |       |       |       |     |       |
|       |  |       |       |       |       |       |       |       |       | 0      |       |       |       |                    |       |       |       |     |       |
|       |  |       |       |       |       |       |       |       |       | 13.00  | 14.00 | 15.00 | 16.00 | 17.00              | 18.00 | 19.83 |       |     |       |

### WINCH RATED CAPACITY

|   |       |       |
|---|-------|-------|
| 2 | FALLS | 8700  |
| 4 | FALLS | 17500 |
| 6 | FALLS | 26200 |
| 7 | FALLS | 30600 |
| 8 | FALLS | 35000 |

### UNITS:

- ANGLES IN DEGREES
- LENGTHS IN METRES
- LOAD IN KILOGRAMS

### KEY:

|       |             |     |        |      |       |      |
|-------|-------------|-----|--------|------|-------|------|
| 14200 | RC @ ARTIC: | 0°  | PITCH: | -2.3 | ROLL: | -1.0 |
| 10300 | RC @ ARTIC: | 20° | PITCH: | -2.3 | ROLL: | -3.0 |
| 6900  | RC @ ARTIC: | 35° | PITCH: | -2.3 | ROLL: | -3.5 |

51 BOOM ANGLE  
(3.1) RADIUS AT ZERO BOOM ANGLE

Note: Pitch & Roll angles indicated are representative of lifts based on firm level ground with tyres at specified pressures.

# LOAD CHART

## RATED CAPACITY CHART PICK AND CARRY (0 - 1.44 km/hr) - FALL BLOCK

| RAD   | BOOM LENGTH TO HEAD SHEAVES - 3rd BOOM RETRACTED |       |       |       |       |       |       |       |       |        |       |       |       |       | 3rd BOOM EXTENDING |       |       |       | RAD |
|-------|--|-------|-------|-------|-------|-------|-------|-------|-------|--------|-------|-------|-------|-------|--------------------|-------|-------|-------|-----|
|       | 7.23   | 7.50  | 8.00  | 8.50  | 9.00  | 9.50  | 10.00 | 10.50 | 11.00 | 12.00  | 13.00 | 14.00 | 15.00 | 16.00 | 17.00              | 18.00 | 19.83 |       |     |
| m     | kg   | kg    | kg    | kg    | kg    | kg    | kg    | kg    | kg    | kg     | kg    | kg    | kg    | kg    | kg                 | kg    | kg    | m     |     |
| 1.0   | 35000  | 35000 | 35000 | 35000 | 35000 | 35000 |       |       |       |        |       |       |       |       |                    |       |       | 1.0   |     |
|       | 47   | 49    | 52    | 55    | 57    | 59    |       |       |       |        |       |       |       |       |                    |       |       |       |     |
| 2.0   | 34100  | 34200 | 34200 | 34300 | 34300 | 33600 | 33000 | 32300 | 31800 |        |       |       |       |       |                    |       |       | 2.0   |     |
|       | 30600  | 27400 | 23300 | 20500 | 18300 | 16600 | 15200 | 14000 | 13000 |        |       |       |       |       |                    |       |       |       |     |
| 2.5   | 26800  | 26900 | 26900 | 27000 | 27000 | 27000 | 27100 | 27100 | 27100 | 26300  |       |       |       |       |                    |       |       | 2.5   |     |
|       | 26100  | 26200 | 26200 | 26300 | 25400 | 22200 | 19800 | 17800 | 16300 | 13800  |       |       |       |       |                    |       |       |       |     |
| 3.0   | 22000  | 22000 | 22100 | 22100 | 22200 | 22200 | 22200 | 22200 | 22300 | 22300  |       |       |       |       |                    |       |       | 3.0   |     |
|       | 21400  | 21400 | 21500 | 21500 | 21600 | 21600 | 19400 | 17400 | 15800 | 13400  | 11600 |       |       |       |                    |       |       |       |     |
| 3.5   | 21200  | 19300 | 18600 | 18600 | 18700 | 18700 | 18700 | 18800 | 18800 | 18800  | 18800 | 18800 |       |       |                    |       |       | 3.5   |     |
|       | 20600  | 18800 | 18100 | 18100 | 18200 | 18200 | 18200 | 17100 | 15500 | 13000  | 11300 | 9900  |       |       |                    |       |       |       |     |
| 4.0   | 19500  | 17700 | 17100 | 17100 | 15400 | 13800 | 12500 | 11500 | 10600 | 9300   | 8300  | 7400  |       |       |                    |       |       | 4.0   |     |
|       | (3.1)  | (3.4) | 19    | 28    | 34    | 38    | 42    | 45    | 48    | 52     | 56    | 59    |       |       |                    |       |       |       |     |
| 5.0   |  |       | 16500 | 16000 | 16100 | 16100 | 16100 | 16200 | 16200 | 16200  | 16200 | 16200 | 16200 |       |                    |       |       | 5.0   |     |
|       |  |       | 16100 | 15600 | 15600 | 15700 | 15700 | 15700 | 15300 | 12800  | 11000 | 9700  | 8600  |       |                    |       |       |       |     |
| 6.0   |  |       | 15200 | 14700 | 14800 | 13300 | 12000 | 10900 | 10100 | 8800   | 7800  | 7000  | 6400  |       |                    |       |       | 6.0   |     |
|       |  |       | (3.9) | 19    | 27    | 33    | 37    | 41    | 44    | 49     | 53    | 56    | 59    |       |                    |       |       |       |     |
| 7.0   |  |       |       | 14400 | 12800 | 12400 | 12500 | 12500 | 12500 | 12500  | 12600 | 12600 | 12600 | 12600 | 12800              |       |       | 7.0   |     |
|       |  |       |       | 14000 | 12400 | 12100 | 12100 | 12100 | 12200 | 12200  | 10600 | 9300  | 8200  | 7400  | 6800               |       |       |       |     |
| 8.0   |  |       |       | 13200 | 11700 | 11400 | 11400 | 10300 | 9400  | 8000   | 7100  | 6300  | 5700  | 5300  | 5000               |       |       | 8.0   |     |
|       |  |       |       | (4.4) | (4.9) | 18    | 26    | 31    | 36    | 42     | 47    | 51    | 54    | 57    | 59                 |       |       |       |     |
| 9.0   |  |       |       |       |       | 11400 | 10300 | 10000 | 10100 | 10100  | 10100 | 10200 | 10200 | 10200 | 10300              | 10400 |       | 9.0   |     |
|       |  |       |       |       |       | 11100 | 10000 | 9800  | 9800  | 9800   | 9800  | 9000  | 7900  | 7100  | 6600               | 6100  |       |       |     |
| 10.0  |  |       |       |       |       | 10400 | 9400  | 9200  | 9200  | 7600   | 6600  | 5800  | 5200  | 4800  | 4500               | 4300  |       | 10.0  |     |
|       |  |       |       |       |       | (5.4) | (5.9) | 17    | 25    | 34     | 40    | 45    | 49    | 52    | 55                 | 58    |       |       |     |
| 11.0  |  |       |       |       |       |       |       | 9300  | 8500  | 8400   | 8400  | 8400  | 8400  | 8500  | 8600               | 8700  | 8900  | 11.0  |     |
|       |  |       |       |       |       |       |       | 9000  | 8200  | 8100   | 8100  | 8200  | 7800  | 6900  | 6300               | 5900  | 5200  |       |     |
| 12.0  |  |       |       |       |       |       |       | 8500  | 7700  | 7500   | 6300  | 5500  | 4900  | 4400  | 4200               | 4000  | 3700  | 12.0  |     |
|       |  |       |       |       |       |       |       | (6.4) | (6.9) | 24     | 33    | 39    | 44    | 48    | 51                 | 54    | 58    |       |     |
| 13.0  |  |       |       |       |       |       |       |       |       | 7200   | 7100  | 7100  | 7100  | 7200  | 7300               | 7400  | 7500  | 13.0  |     |
|       |  |       |       |       |       |       |       |       |       | 6900   | 6900  | 6900  | 6900  | 6800  | 6200               | 5700  | 5000  |       |     |
| 14.0  |  |       |       |       |       |       |       |       |       | 6500   | 6300  | 5200  | 4600  | 4100  | 3900               | 3700  | 3400  | 14.0  |     |
|       |  |       |       |       |       |       |       |       |       | (7.9)  | 23    | 32    | 38    | 42    | 46                 | 50    | 54    |       |     |
| 15.0  |  |       |       |       |       |       |       |       |       | 6100   | 6100  | 6100  | 6100  | 6100  | 6300               | 6400  | 6500  | 15.0  |     |
|       |  |       |       |       |       |       |       |       |       | 5900   | 5900  | 5900  | 5900  | 5900  | 6100               | 5600  | 4900  |       |     |
| 16.0  |  |       |       |       |       |       |       |       |       | 5500   | 5300  | 4400  | 3900  | 3700  | 3500               | 3200  |       | 16.0  |     |
|       |  |       |       |       |       |       |       |       |       | (8.9)  | 22    | 31    | 37    | 41    | 45                 | 51    |       |       |     |
| 17.0  |  |       |       |       |       |       |       |       |       | 5300   | 5300  | 5300  | 5400  | 5500  | 5700               |       |       | 17.0  |     |
|       |  |       |       |       |       |       |       |       |       | 5200   | 5100  | 5100  | 5300  | 5400  | 4800               |       |       |       |     |
| 18.0  |  |       |       |       |       |       |       |       |       | 4800   | 4500  | 3800  | 3500  | 3300  | 3000               |       |       | 18.0  |     |
|       |  |       |       |       |       |       |       |       |       | (9.9)  | 21    | 30    | 36    | 40    | 47                 |       |       |       |     |
| 19.83 |  |       |       |       |       |       |       |       |       | 4700   | 4700  | 4800  | 4900  | 5000  |                    |       |       | 19.83 |     |
|       |  |       |       |       |       |       |       |       |       | 4500   | 4500  | 4600  | 4700  | 4800  |                    |       |       |       |     |
|       |  |       |       |       |       |       |       |       |       | 4200   | 3900  | 3400  | 3200  | 2800  |                    |       |       |       |     |
|       |  |       |       |       |       |       |       |       |       | (10.9) | 21    | 29    | 35    | 42    |                    |       |       |       |     |
|       |  |       |       |       |       |       |       |       |       | 4100   | 4200  | 4300  | 4500  |       |                    |       |       |       |     |
|       |  |       |       |       |       |       |       |       |       | 4000   | 4100  | 4200  | 4300  |       |                    |       |       |       |     |
|       |  |       |       |       |       |       |       |       |       | 3700   | 3500  | 3100  | 2700  |       |                    |       |       |       |     |
|       |  |       |       |       |       |       |       |       |       | (11.9) | 20    | 28    | 38    |       |                    |       |       |       |     |
|       |  |       |       |       |       |       |       |       |       | 3800   | 3800  | 4000  |       |       |                    |       |       |       |     |
|       |  |       |       |       |       |       |       |       |       | 3600   | 3700  | 3800  |       |       |                    |       |       |       |     |
|       |  |       |       |       |       |       |       |       |       | 3400   | 3200  | 2600  |       |       |                    |       |       |       |     |
|       |  |       |       |       |       |       |       |       |       | (12.9) | 20    | 32    |       |       |                    |       |       |       |     |
|       |  |       |       |       |       |       |       |       |       | 3400   | 3600  |       |       |       |                    |       |       |       |     |
|       |  |       |       |       |       |       |       |       |       | 3100   | 2600  |       |       |       |                    |       |       |       |     |
|       |  |       |       |       |       |       |       |       |       | (13.9) | 26    |       |       |       |                    |       |       |       |     |
|       |  |       |       |       |       |       |       |       |       | 3200   |       |       |       |       |                    |       |       |       |     |
|       |  |       |       |       |       |       |       |       |       | 2700   |       |       |       |       |                    |       |       |       |     |
|       |  |       |       |       |       |       |       |       |       | 17     |       |       |       |       |                    |       |       |       |     |
|       |  |       |       |       |       |       |       |       |       | 3000   |       |       |       |       |                    |       |       |       |     |
|       |  |       |       |       |       |       |       |       |       | 2600   |       |       |       |       |                    |       |       |       |     |
|       |  |       |       |       |       |       |       |       |       | 0      |       |       |       |       |                    |       |       |       |     |

### WINCH RATED CAPACITY

|   |       |       |
|---|-------|-------|
| 2 | FALLS | 8700  |
| 4 | FALLS | 17500 |
| 6 | FALLS | 26200 |
| 7 | FALLS | 30600 |
| 8 | FALLS | 35000 |

### UNITS:

- ANGLES IN DEGREES
- LENGTHS IN METRES
- LOAD IN KILOGRAMS

### KEY:

|       |                           |     |        |      |       |      |
|-------|---------------------------|-----|--------|------|-------|------|
| 12600 | RC @ ARTIC:               | 0°  | PITCH: | -2.3 | ROLL: | -1.0 |
| 9300  | RC @ ARTIC:               | 20° | PITCH: | -2.3 | ROLL: | -3.0 |
| 6300  | RC @ ARTIC:               | 35° | PITCH: | -2.3 | ROLL: | -3.5 |
| 51    | BOOM ANGLE                |     |        |      |       |      |
| (3.1) | RADIUS AT ZERO BOOM ANGLE |     |        |      |       |      |

Note: Pitch & Roll angles indicated are representative of lifts based on firm level ground with tyres at specified pressures.

# OUR LOCATIONS



## Brisbane (Head Office)

Terex Australia Pty Ltd  
585 Curtin Avenue East (PO Box 1396)  
Eagle Farm QLD 4009, Australia

**Tel:** +61 7 3868 9600

**Fax:** +61 7 3268 2489

**Services:** Manufacturing, Sales, Service, Parts

## Sydney

Terex Australia Pty Ltd  
114 Hassall Street  
Wetherill Park NSW 2164, Australia

**Tel:** +61 2 8786 4444

**Fax:** +61 2 8786 4455

**Services:** Sales, Service, Parts

## Melbourne

Terex Australia Pty Ltd  
133 Logis Boulevard  
Dandenong South VIC 3175, Australia

**Tel:** +61 3 8794 4170

**Fax:** +61 3 9551 8143

**Services:** Sales, Service, Parts

## Perth

Terex Australia Pty Ltd  
39 Catalano Road  
Canning Vale WA 6155, Australia

**Tel:** +61 8 9232 0000

**Fax:** +61 8 9232 0051

**Services:** Sales, Service, Parts

**Tel:** 1800 837 395

**Email:** [franna@terex.com](mailto:franna@terex.com)

The material in this document is for information only and is subject to change without notice.  
Franna assumes no liability resulting from errors or omissions in this document, or from the use of the information contained herein.  
Due to continual product development we reserve the right to change specifications without notice. Product performance figures given in this brochure are for guidance purposes only, this information does not constitute an expressed or implied warranty or guarantee, but shows test examples. These results will vary depending on application. Photographs are for illustrative purposes only; some or all of the machines in the illustrations may be fitted with optional extras. Please check with your local sales manager or dealer for details on optional extras.  
Published and Printed in October 2019.



[www.terex.com/franna](http://www.terex.com/franna)

Courtesy of CraneMarket.com