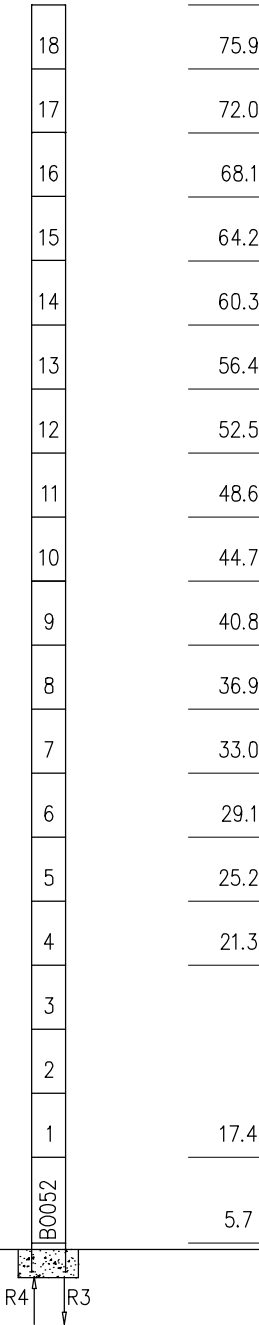


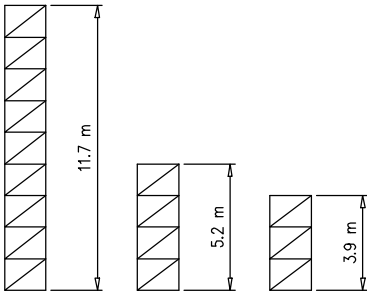
S2300 – 2.30x2.30 m

S2050 – 2.05x2.05 m

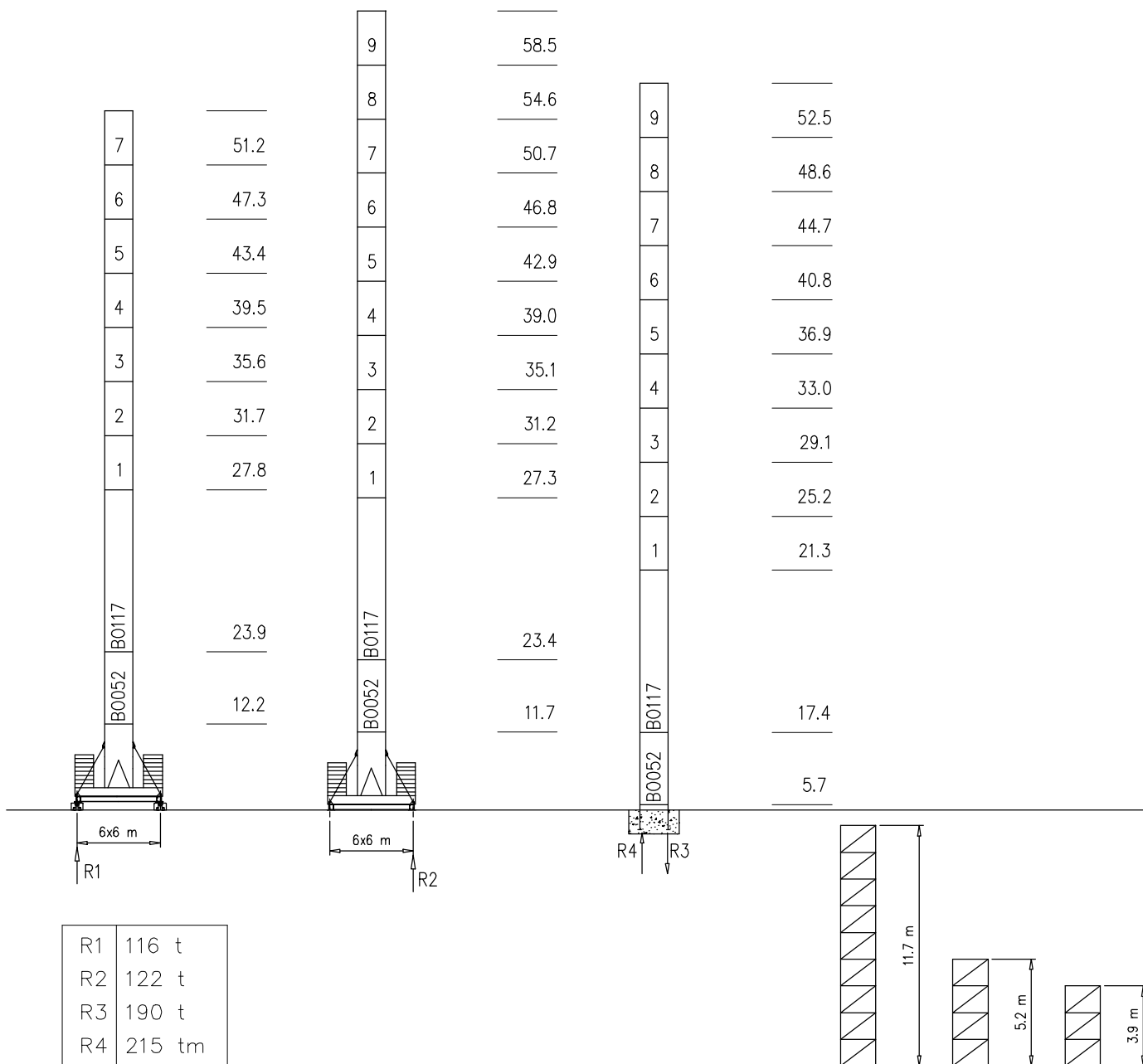
S2300



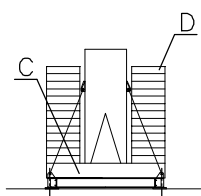
R1	
R2	
R3	280 t
R4	430 tm



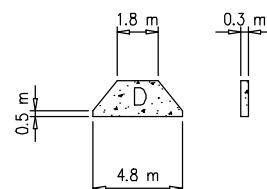
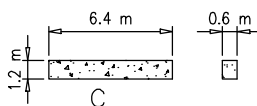
S2050



Peso zavorra – Ballast weight – Poids du lest – Ballastgewicht – Peso de lastre



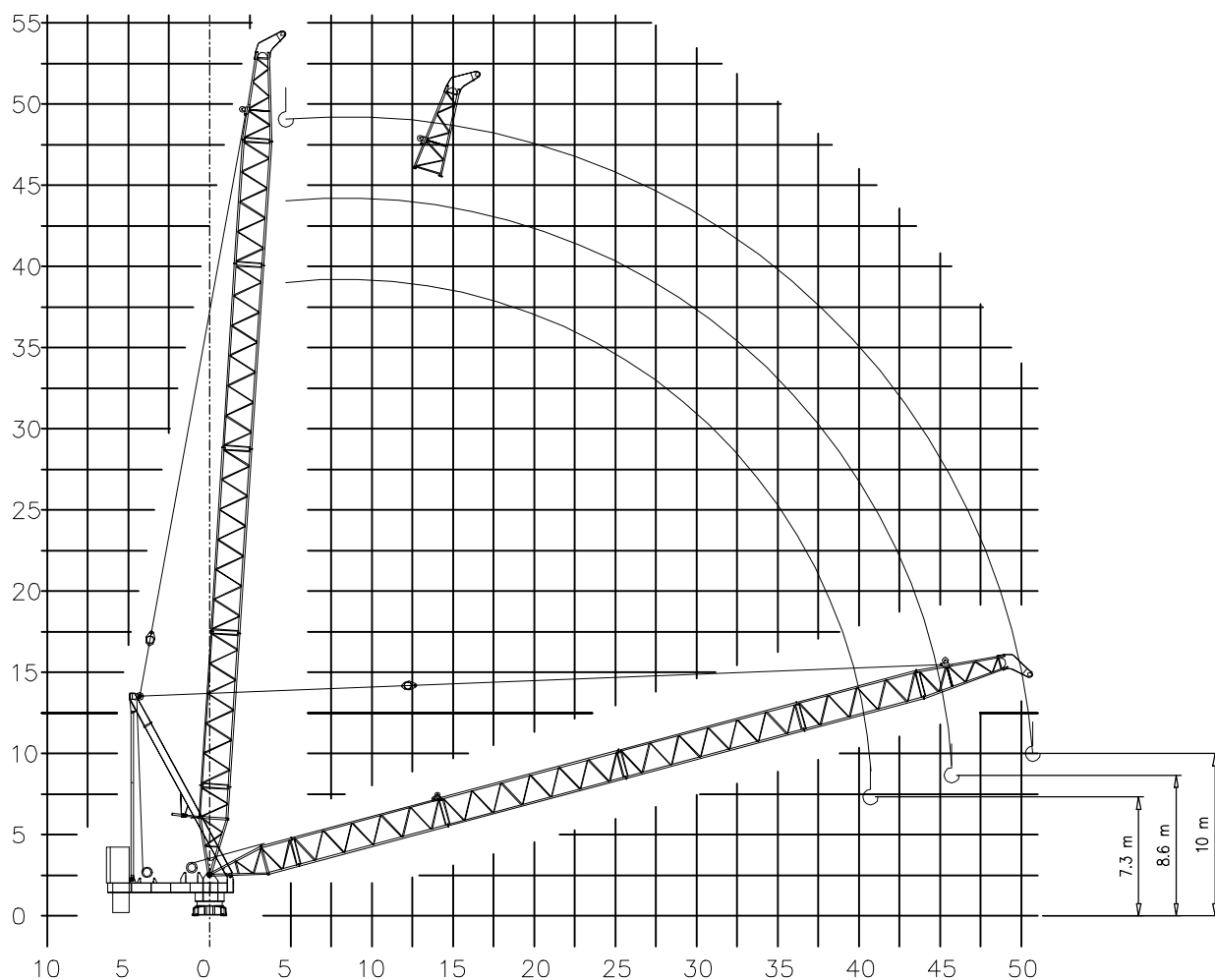
H	n°	Tot.
58.5 m	2C+ 18D	112460 kg



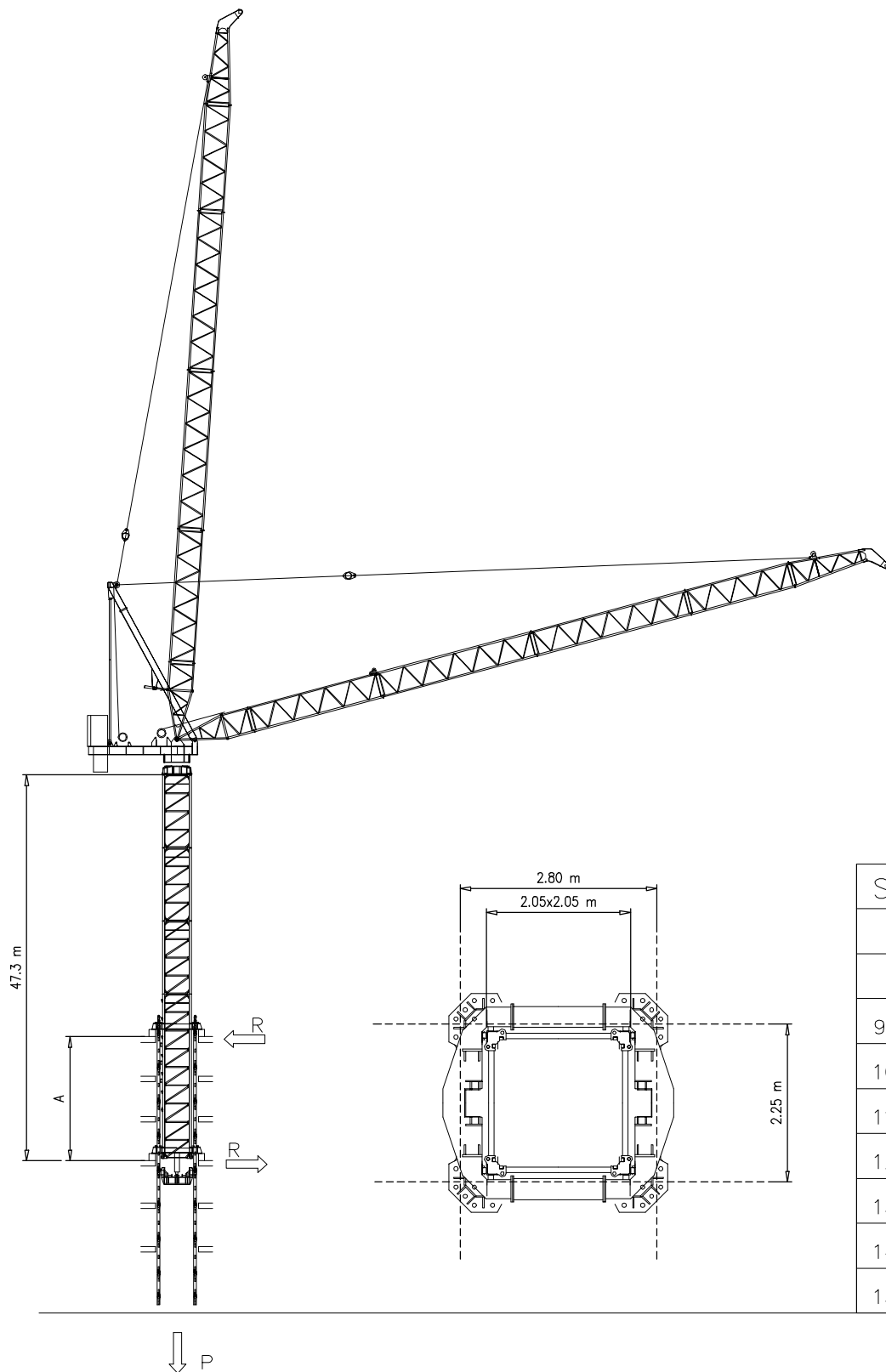
Curve di carico – Courbes de charges – Load diagrams – LastKurven – Curvas de cargas

Pmax 6000 kg

50 m	4.5	16	20	25	30	33	35	40	44	50	m
	12000	12000	7200	6100	5400	4800	4300	3600	3000	2500	kg
45 m	4.5	16	20	25	30	33	35	40	45		m
	12000	12000	7600	6400	5800	5200	4600	3900	3500		kg
40 m	4.5	16	20	25	30	33	35	40			m
	12000	12000	8000	6800	6000	5500	5000	4200			kg



Gru in cavedio – Climbing crane – Télescopage sur dalles – Kletterkrane in Gebäude – Telescopage gruas trepadoras – Telescopagem sobre lages



S2050		
A	R	P
m	t	t
9	45.3	120
10	42	
11	39.3	
12	37	
13	35	
14	33.4	
15	32	

Sollevamento Hoisting Levage Heben Elevaciòn Elevaçao	V100.100			Fast	1a	18 m/min	6000 kg	75 kW	V100.100 190 kVA
				2a	38 m/min	6000 kg			
				3a	60 m/min	6000 kg			
				4a	96 m/min	4000 kg			
				5a	128 m/min	2600 kg			
				6a	150 m/min	1300 kg			
				Fast	1a	9 m/min	12000 kg		
				2a	19 m/min	12000 kg			
				3a	30 m/min	12000 kg			
				4a	48 m/min	8000 kg			
				5a	64 m/min	5200 kg			
				6a	75 m/min	2600 kg			
				Slow	1a	8 m/min	6000 kg		
				2a	18 m/min	6000 kg			
				3a	26 m/min	6000 kg			
				4a	38 m/min	6000 kg			
				5a	60 m/min	6000 kg			
				6a	96 m/min	4000 kg			
				Slow	1a	4 m/min	12000 kg		
				2a	9 m/min	12000 kg			
				3a	13 m/min	12000 kg			
				4a	19 m/min	12000 kg			
				5a	30 m/min	12000 kg			
				6a	48 m/min	8000 kg			
Impennamento braccio Luffing jib Flèche relevée Ausleger in steilstellung Flecha izada Lança inclinada			1a	5.0 min		75 kW	Potenza elettrica necessaria Puissance électrique nécessaire Necessary electric power Anschlusswert – Potencia		
			2a	2.5 min					
			3a	1.5 min					
Rotazione Slewing Orientation Schwenken Orientaciòn Rotaçao			1a	0 → 0.2	giri/min tr/min rp/min	6.6 kW @ 1200rpm n° 3 x 2.2 kW			
			2a	0 → 0.6					
			3a	0 → 0.9					
Traslazione Travelling Translation Kranfahren Traslaciòn Translaçao			1a	0 → 5		9 kW			
			2a	0 → 20					

Rete elettrica – Réseau – Mains supply – Netzstrom – Red – Rede electrica	400V – 50 Hz
---	--------------

 <p>FMgru s.r.l.          via Emilia 11-29010 Pontenure PC ITALY          tel. 0523/510446 ric.aut. fax 0523/510365          www.fmgru.com e-mail: info@fmgru.com</p>	<p>FEM 1.001          2000/14/CE</p>	
--	--	--



Documento commerciale non contrattuale  
Per tutte le informazioni tecniche riferirsi  
alle corrispondenti istruzioni

Unverbindliches Vertriebsdokument.  
Für technische Informationen, siehe die  
entsprechenden Anweisungen.

This commercial document is not legally binding. For any technical information, please refer to the corresponding instructions.

Documento commercial no contractual  
Para cualquier información técnica,  
ver la noticia correspondiente.

Code: 15ICA37L35A0			
Ed.	Data	Rev	Data
1	14.10.05	0	14.10.05